



Looped Roman Natural Shade with Continuous-Loop Lift:  
Oxford, Bold Burgundy 45744

## Getting Warmer

Warm colors are trending, and for good reason. These comforting hues engulf you the moment you enter a room, creating a cozy space you'll never want to leave.

They come in a variety of styles, whether your personal taste leans toward eclectic, traditional, or somewhere in-between. Add just a little bit, or create an entire room filled with warm colors, the decision is yours. Graber offers the perfect finishing touch for your room, so you'll delight in every detail.

# Exuding Eclectic



*Design Tip:*  
Layer patterned  
draperies or a fabric-  
wrapped cornice on top  
of natural shades for a  
bohemian feel.



*Mixing a variety of patterns and textures is key to achieving an eclectic style and showcasing your personality in your space.*

# Exuding Eclectic



Solar shades are ideal for a sunny home office. They diffuse light, minimizing the glare on your screen, for a more seamless work day.

Eclectic patterns in soft treatments are a great way to try out this decor style. If your furnishings and art already lean eclectic, try a simple cellular or solar shade in a warm color.

1.



2.



3.



4.



5.



6.



1. Cellular Shades  
Valletta, Cinnamon Spice 0642

2. Vertical Blinds  
Royale, Rapture 0434

3. Soft Treatments  
Kearney, Spice 5762

4. Classic Roman Shades  
Madrid, Granate 3517

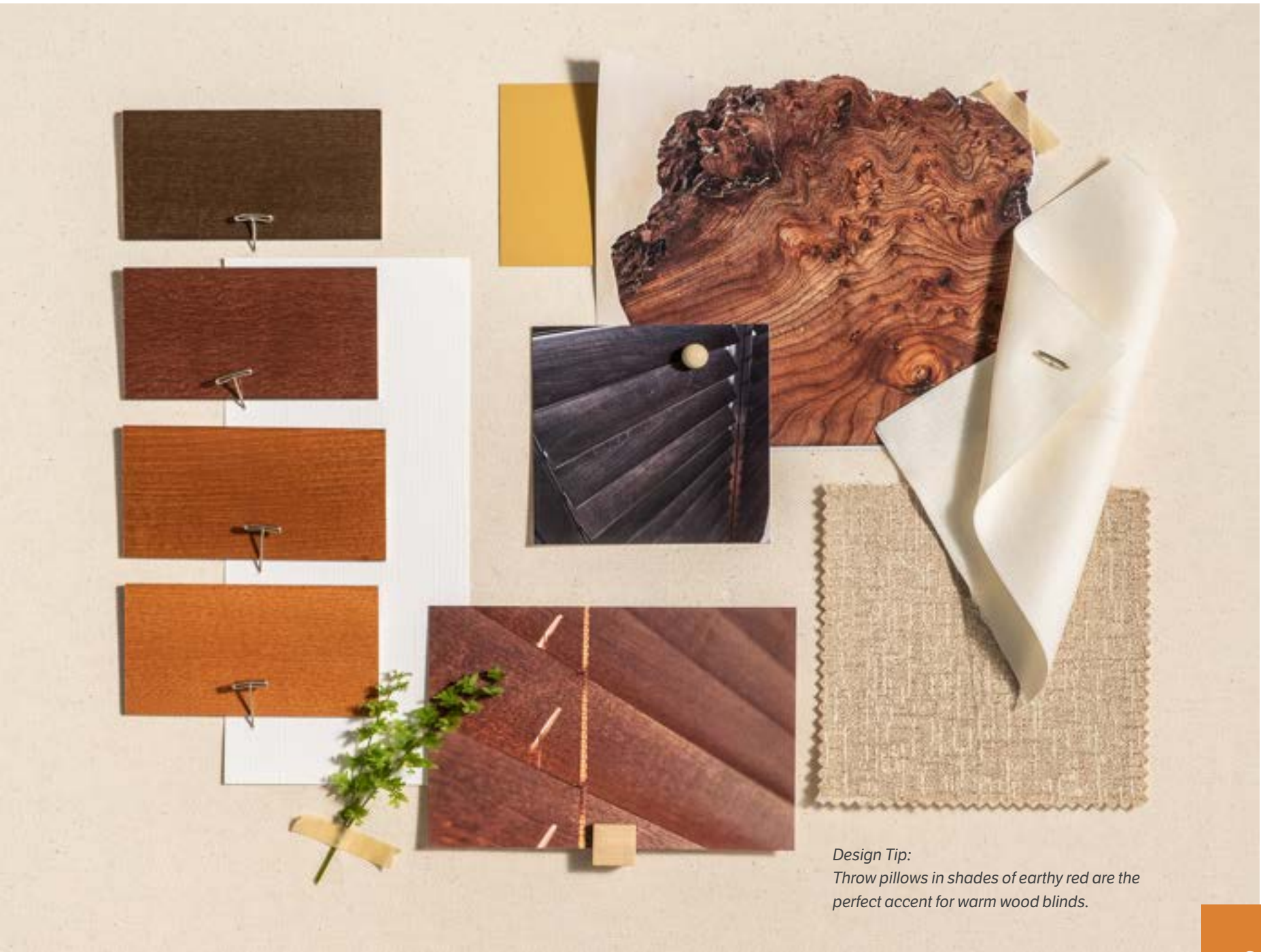
5. Soft Treatments  
Kazlo, Rust 0776

6. Soft Treatments  
Venetian, Tomato 5492



Wood blinds add a natural warmth and richness to your room, and are suitable for any style.

# Warming Woods



Design Tip:  
Throw pillows in shades of earthy red are the perfect accent for warm wood blinds.

Left: 2" Wood Blinds with Cordless Lift/Wand Tilt: Sienna 1685 and 3½" Legacy Valance



# Warming Woods

Hand-crafted in a range of custom styles, wood shutters are an investment in quality and elegance that will add value to any home.

Stained wood in warm hues add a bold natural statement to your space. Opt for lighter walls and furniture, so your wood shutters or blinds really pop.



- 1. Wood Blinds, Wood Shutters Stain, Wheat 1710
- 2. Wood Blinds, Wood Shutters Stain, Cherry Wood 1014
- 3. Wood Blinds, Wood Shutters Stain, Saddle Brown 1694
- 4. Wood Blinds, Wood Shutters Stain, Dark Walnut 1641
- 5. Wood Blinds, Wood Shutters Stain, Truffle 1054
- 6. Wood Blinds, Wood Shutters Stain, Walnut 1012

Left: 3½" Wood Shutters with Hang Strip, Astragal Overlap, Center Divider Rail, and Standard Tilt: Cappuccino 1546

# Pretty in Pink



When choosing window treatments for a home with children or pets, safety is just as important as style—go cordless for maximum safety for your family.



Design Tip:  
Add a painted wood cornice to help visually tie together treatments on side-by-side windows.

Left: Perfect-Vue™ Shades with Cordless Lift: 2" Pleated Shades: Serendipity, Heavenly 5800 (top) and ½" Double Cell Cellular Shades: Sanctuary, Pink Rose 1465 (bottom) with 4½" Symphony Cornice with Keystone: Custom Color

# Pretty in Pink



Mix multiple shades of pink in varying textures for the ultimate in luxury and femininity.

Soft pinks and corals are a beautiful choice for bedrooms. Printed roller shades offer unparalleled privacy and light control, while soft treatments are great for layering.

1.



2.



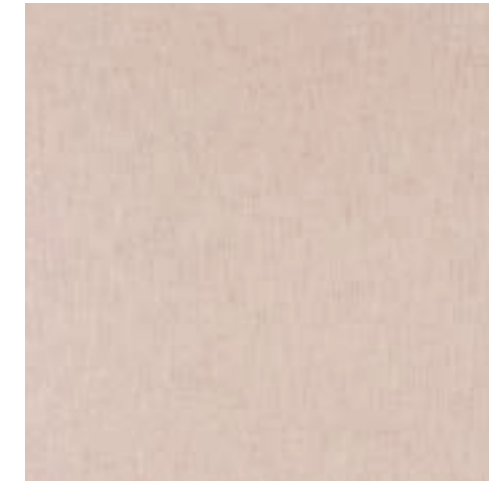
3.



4.



5.



6.



1. Cellular Shades  
Sanctuary, Pink Rose 1465

2. Roller Shades, Sliding Panels  
Renaissance, Blushed Paradise  
16801 (RS), T6801 (SP)

3. Soft Treatments  
Penrose, Sorbet 5713

4. Soft Treatments  
Florabar, Blush 5610

5. Soft Treatments  
Hensley, Dahlia 4020

6. Soft Treatments  
Lofty, Dusty Rose 5951

Left: Roller Shade with Motorized Lift: Renaissance, Blushed Paradise 16801 with Contour Valance

# Delightfully Golden



Bottom up/top down cellular shades give you the flexibility to have both privacy and sunlight in your living spaces.



*Design Tip:*  
Mix tough materials like leather with delicate layered shades for an unexpected pairing.

Left: ¾" Single Cell Bottom Up/Top Down Cellular Shades with Cordless Lift: Splendor, Golden Wheat 1355



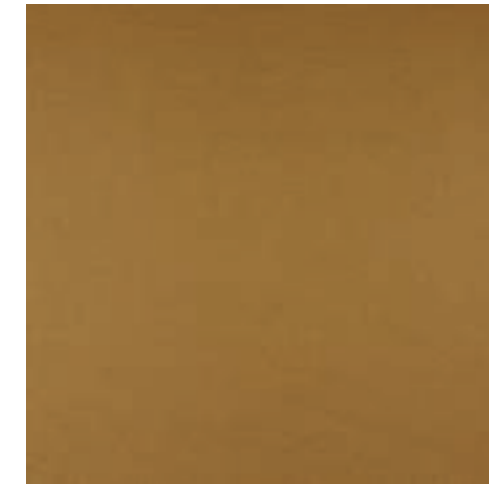
# Delightfully Golden



Layer sheer draperies with roller shades for both style and function.

Golden hues add an elegance no matter what product you choose. Go for cellular shades in Golden Wheat for a more casual look, or soft treatments in Gilded for extra glamour.

1.



2.



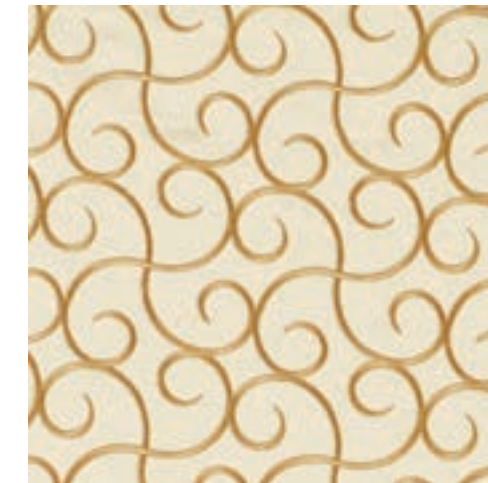
3.



4.



5.



6.



1. Soft Treatments  
Innuendo, Melvina 2341

2. Roller Shades  
Gleam, Gold Rush 16101

3. Cellular Shades  
Sanctuary, Golden Wheat 1470

4. Soft Treatments  
Innuendo, Kingsbury 5841

5. Soft Treatments  
Innuendo, Kendall 5781

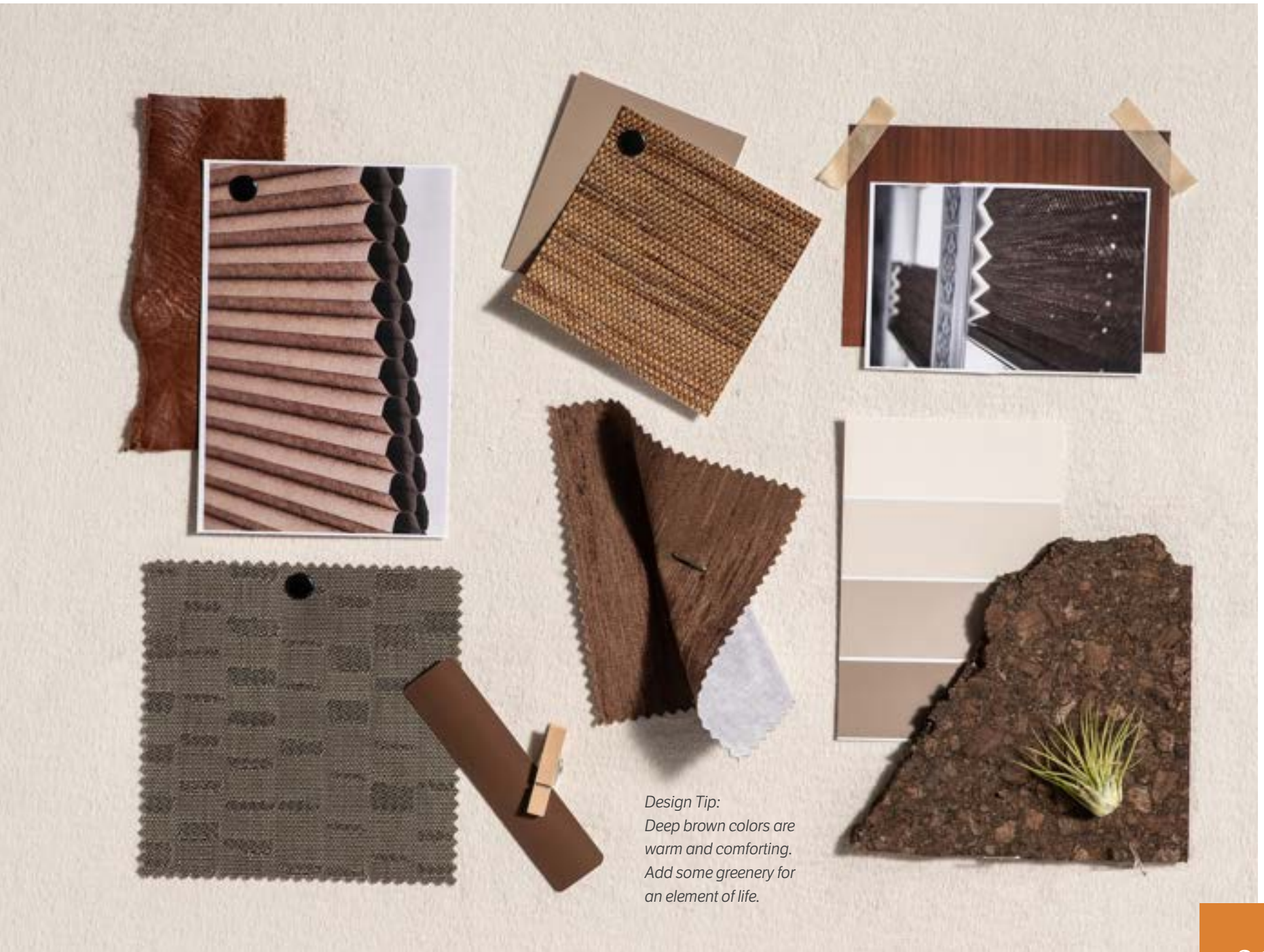
6. Soft Treatments  
Liana, Gilded 5871

Left: Roller Shade with Cordless Lift and Fabric-Wrapped Hem Bar: Halifax, Bold Roast 21524;  
Draperies with 2 Finger Inverted Pleat Drapery in Tuzee, Stone 5681



Cellular shades in Chocolate Cupcake are a gorgeous way to add warmth and depth to an entry way.

# Rich & Warm



*Design Tip:*  
 Deep brown colors are warm and comforting. Add some greenery for an element of life.

Left: ¾" Single Cell Cellular Shade with Cordless Lift: Splendor, Chocolate Cupcake 1365

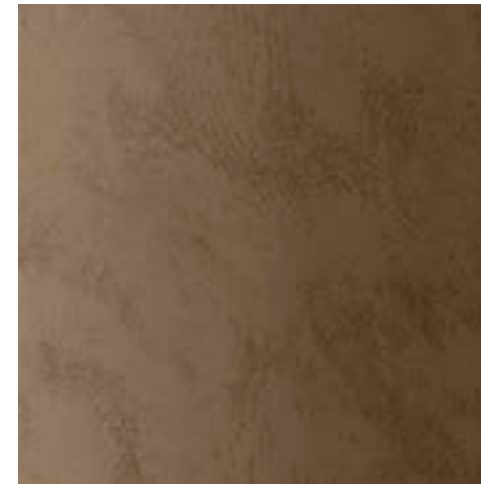


*Rich & Warm*

*Textural pleated shades play well with eclectic throw pillows and leather couches.*

Warm brown hues are available in all Graber product lines. Choose vertical blinds for sliding doors or solar shades in rooms where light control is a must.

1.



2.



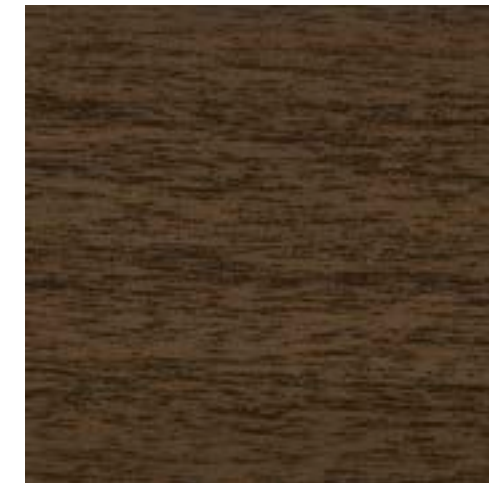
3.



4.



5.



6.



1. Vertical Blinds, Horizontal Vinyl Blinds  
Safari, Buffalo 3640 (VB), 3105 (HB)

2. Vertical Blinds  
Tahiti Weave, Hudson 0450

3. Solar Shades, Sliding Panels  
Standard Weave 1%, Café Doppio  
47907 (SS), T7907 (SP)

4. Horizontal Aluminum Blinds  
Adobe 751

5. Faux Wood Blinds  
Morel 7706

6. Pleated Shades  
Sheer Linen, Chocolate Dream 3111

Left: 2" Pleated Shades with Motorized Lift: Safari, Grasscloth 2350

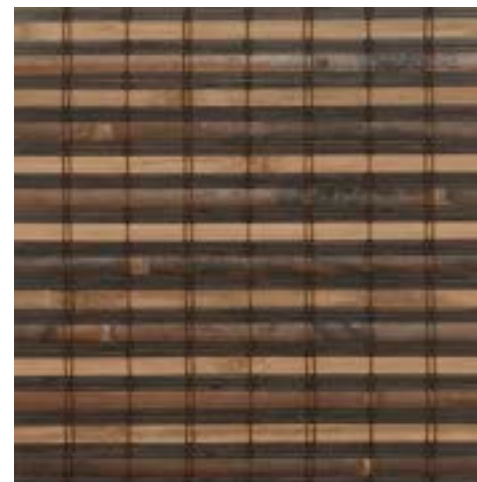
# Woven by Nature



Gorgeous, hand-woven natural shades add a bespoke element to your room.

Natural shades come in a variety of styles, from light-weight weaves to more substantial woods.

1.



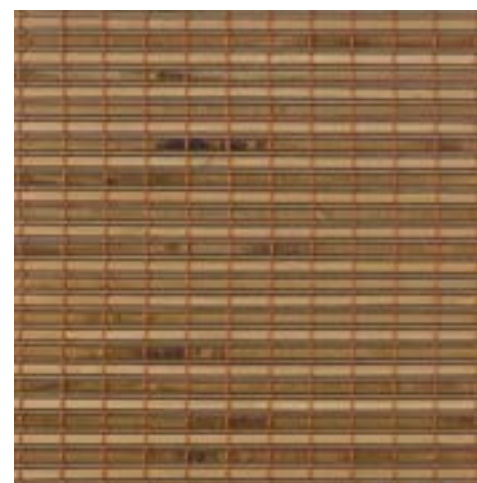
2.



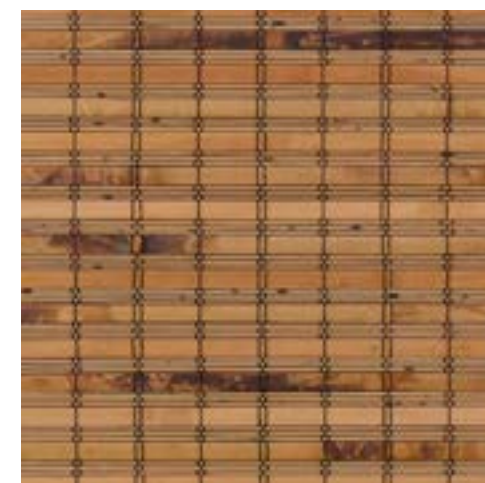
3.



4.



5.



6.



1. Natural Shades  
Toushan II, Mocha 63759

2. Natural Shades  
Amour, Radiant 00001

3. Natural Shades  
Inan, Umber 04858

4. Natural Shades  
Lipo, Ambrosia 06702

5. Natural Shades  
Toushan II, Taupe 63659

6. Natural Shades  
Tatum, Warm Wicker 70790

Left: Looped Roman Natural Shades with Cord Lift: Lipo, Earthtones 06793

*Uniquely  
You*



*With our large selection of patterns and fabrics, go bold and daring with your window coverings, and make your room uniquely you.*

Whether your style leans toward lively printed soft treatments or bold berry-hued cellular shades, Graber has options that you'll love.

1.



2.



3.



4.



5.



6.



1. Cellular Shades  
Sanctuary, Tuscan Red 1458

2. Roller Shades, Sliding Panels  
Harmony, Harvest 02603 (RS),  
T2603 (SP)

3. Horizontal Aluminum Blinds  
Metallic Bronze 758

4. Vertical Blinds  
Fiber, Bloodroot 3977

5. Soft Treatments  
Bingham, Coral 5290

6. Soft Treatments  
Richdale, Spice 6291

Left: Artisan Roman Shades in Seamless Style with Cordless Lift: Taryn, Bittersweet 4502, Water Repellent Liner