

Funk™

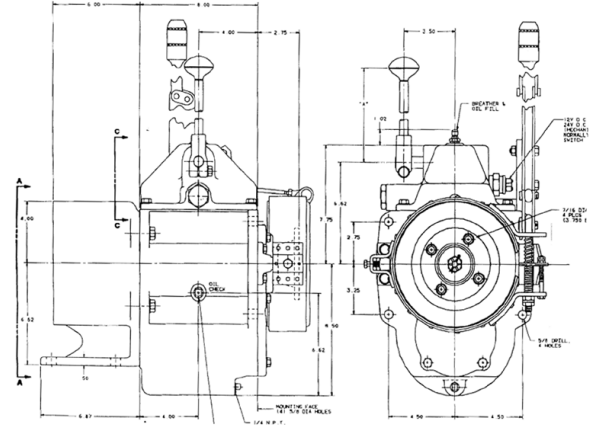
23000 HMD Transmission

Industrial Drivetrain Specifications



JOHN DEERE

Dimensions



Ratings

Input power (max)	75 kW (100 hp)
Input torque (max)	271 Nm (200 lb-ft)
Input no load speed (max)	3000 rpm

General data

Motor adapters	SAE C and D
Approximate dry weight	69-72 kg (151-159 lb)
Oil Capacity	3.3 L (3 qt)
Oil Type	MIL-L-2105-C or API classification GL-5
Speeds	3, 4
Configuration	In-line
Shift options:	Hydraulic, Mechanical

Gear ratio (spur-type gears)

Model	Low	2nd	3rd	High
23155	6.63:1	3.17:1	1.72:1	1:1
23125	6.63:1	2.54:1	—	1:1
23126	6.63:1	3.17:1	—	1:1

Splines

Input	SAE 14-tooth 12/24 DP
	SAE 13-tooth 8/16 DP
Parking brake	Band-type
Output fittings	Spicer 3-1-2181
Applications	Dozing machines, motor graders, railway vehicles, sweepers, pavers, and virtually any equipment requiring controlled travel speed.

Features and benefits

Controlled ground speed at full engine power

- Available to use with applications up to 75 kW (100 hp)
- 3000 rpm max input, no load speed

Multiple gear ratios in three-speed versions

- Covers low-speed working range through high-gear travel speeds
- Wide speed variance in each gear range

Selection of SAE hydraulic input motor mountings

- SAE C and D mounts to utilize input hydraulics to best fit the application

John Deere Power Systems
3801 W. Ridgeway Ave.
PO Box 5100
Waterloo, IA 50704-5100
Phone: 800.553.6446
Fax: 319.292.5075

All values at rated speed and power with standard options unless otherwise noted.
Specifications and design subject to change without notice.