

HTEC

PACKAGED SYSTEMS
& CONTROLS

A DIVISION OF


HEAT TRANSFER
EQUIPMENT COMPANY, INC.



THERE ARE MANY
BENEFITS TO A PRE-
ENGINEERED &
PACKAGED SYSTEM. OUR
EXPERT ENGINEERING &
SALES TEAMS ARE READY
TO ASSIST WITH YOUR
NEXT PROJECT TO
PROVIDE THE MOST
ENERGY EFFICIENT &
COST EFFECTIVE
SOLUTION FOR YOUR
APPLICATION.



VISIT OUR WEBSITE

175 Harvard Avenue
Half Moon Bay, CA 94019

WWW.HTECOMPANY.COM
(650) 873-4353



175 HARVARD AVENUE, HALF MOON BAY, CA 94019

Heat Transfer Equipment Company and Htec Packaged Systems & Controls have engineered and manufactured packaged systems for a wide range of Mechanical, Plumbing, & Industrial applications.

We take pride in our professional experience and apply that knowledge to where it matters most. For decades, our mission has been to provide our customers with superior packaged products that meet or exceed the industry's energy efficiency standards, prevail the competition, and surpass expectations.



SOME OF OUR CUSTOMERS:



Our Products & Systems:

Packaged Systems for Domestic Hot Water & Hydronic Heating

HVAC Control Systems

Energy Management Solutions

UL 508A Certified Panels

Packaged Pumps & Trim

Simplex Pressure Boosting Systems

Process Cooling Systems

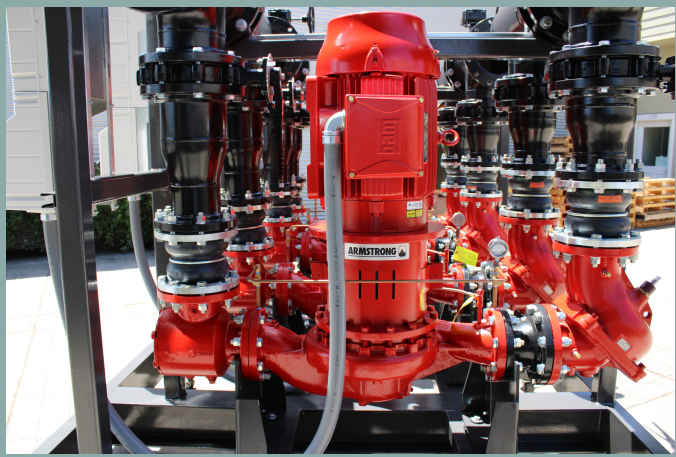
Water Source Heat Pump Systems

Custom Water Reclamation and other Plumbing Systems

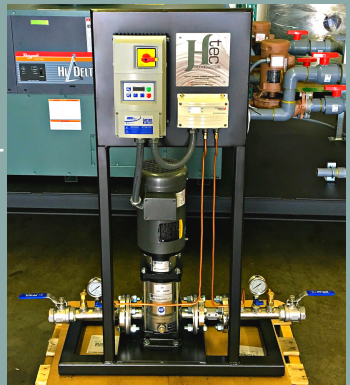


Why Choose a Pre-Packaged System?

A complete packaged system is designed and engineered to meet unique requirements. It eliminates guesswork, unknown labor costs, varying equipment lead times, and the hassle of field coordination involved with loose components. A complete package by Htec will reduce the cost & time for start-up, minimize on-site labor, provide confidence in system performance, & accelerate timelines. With each package pre-piped and wired, there is minimal assembly down-time required.



Htec Packaged Systems & Controls strives to provide superior quality, performance, & customer service with every packaged system. Our sales and engineering teams work to find the best solution for your specific needs; whether it be sustainability, environmental, or spatial. Each skid package is tested at our facility before shipment, and we will provide certified start-up after installation. With decades of experience, Htec is a leading Bay Area supplier for packaged systems & controls.



HTEC Hydronic Heating Skid Package Features & Benefits:

- Indoor/Outdoor rated Condensing Boilers
- 2-Pump Unit with Intelligent Variable Speed controls
 - Offers full redundancy or parallel-pumping operation; Saves up to 75% in energy usage
- Structural steel frame with full coverage plate steel deck, powder coated for additional protection from the elements
 - Includes lifting and anchor points
- Master/follower boiler sequencing control system
- System Air-Dirt Separator and auto air vent
- System thermal Expansion Tank
- System Chemical Pot Feeder

HTEC Power Distribution Panel Includes:

- NEMA 4 enclosure
- Three phase single point power connection with lockable main system disconnect
- Individual branch circuit overload protection and disconnects
 - Boiler transformer overload protection on primary and secondary
- UL Listed

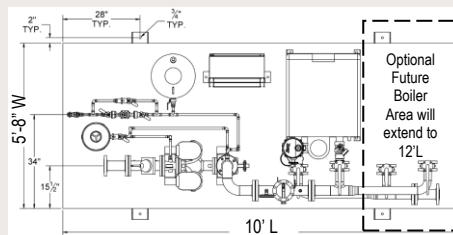
HTEC Model	Input	Output	Efficiency	GPM (30°ΔT)	TDH (Ft.)	FLA (460V)	Frame	Water Conn. (Inches)	Weight (Lbs.)
HTEC400-1	399	391	98%	26	60	8.1	10' x 5'-8"	2	2577
HTEC500-1	500	489	97.8%	33	60	8.1	10' x 5'-8"	2	2644
HTEC600-1	600	586	97.6%	39	60	8.1	10' x 5'-8"	2	2711
HTEC725-1	725	705	97.3%	47	60	8.1	10' x 5'-8"	3	2768
HTEC850-1	850	826	97.2%	55	60	8.1	10' x 5'-8"	3	2800
HTEC800-2	798	782	98%	52	60	16.7	12' x 5'-8"	3	3952
HTEC1000-2	1000	978	97.8%	64	60	16.7	12' x 5'-8"	3	4024
HTEC1200-2	1200	1172	97.6%	78	60	16.7	12' x 5'-8"	3	4181
HTEC1450-2	1450	1410	97.3%	94	60	16.7	12' x 5'-8"	3	4320
HTEC1700-2	1700	1652	97.2%	110	60	16.7	12' x 5'-8"	3	4380

1. (-1) Models have (1) Boiler, (-2) Models have (2) Boilers.
2. Flow at a particular ΔT can be found by calculating GPM = BTU / [500 · ΔT].
3. Full load amperages are calculated assuming 3 phase incoming power. Additional voltages available upon request.
4. Operating weight provided is approximate and may vary based on additional equipment/components selected.

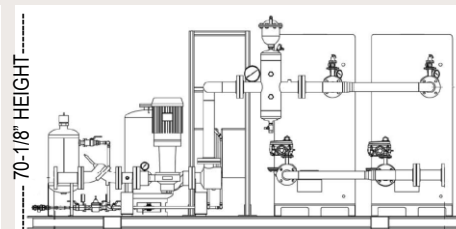
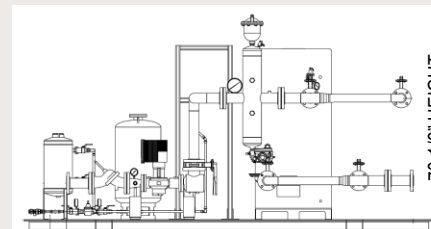
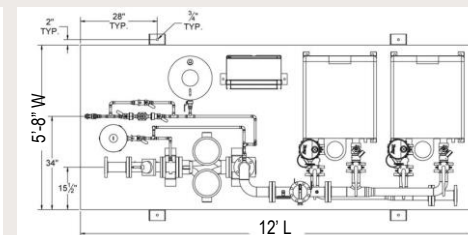
Model Nomenclature

EXAMPLE:	HTEC800-2	-	XVERSL	-	798	-	O	-	460
	Htec Model		Raypak Series		Boiler MBH Input		(I)Indoor (O)Outdoor		Voltage

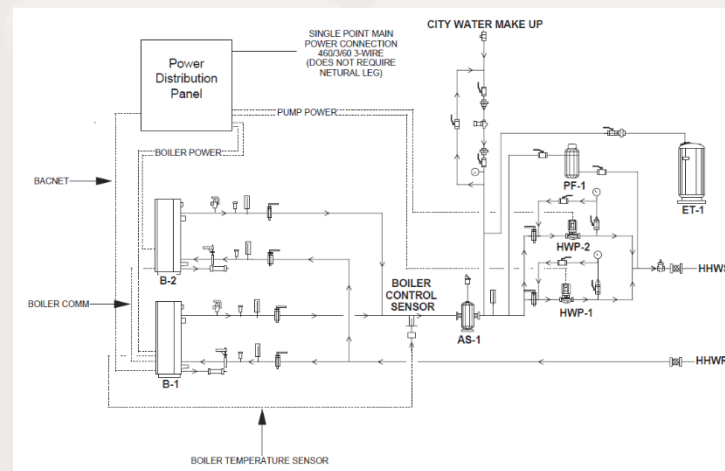
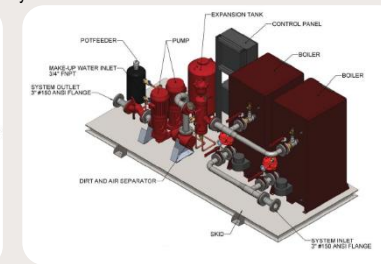
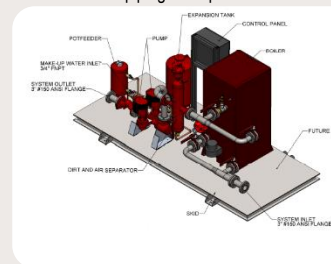
SINGLE BOILER SKID



DUAL BOILER SKID



1. Boiler venting to be provided and installed by contractor.
2. Gas piping to be provided and installed by contractor.
3. Condensate drain piping to be provided and installed by contractor.



Htec Packaged Systems & Controls featured in PM Engineer (PME)

Our cataloged dual-boiler skid package has been featured in PM Engineer Magazine!

Htec Packaged Systems & Controls has been recognized as an industry expert for designing and manufacturing the most energy efficient and cost-effective packaged systems. By using industry leading technology, equipment, and controls, our packaged systems have continued to be of interest in the engineering community.

To read the full article, scan or click the QR code below!

