



CUSTOM PRINT NAVIGATOR

Transform your food products with custom printed packaging! Elevate your brand's visibility and recognition by showcasing your unique logo and design, creating an instant connection with consumers. Stand out on crowded shelves and attract new customers with eye-catching, high-quality packaging that tells your brand's story. Not only does it capture attention, but it also fosters customer loyalty and retention by delivering a memorable and consistent brand experience. Invest in custom printed food packaging to boost your market presence and drive long-term success.

2024



CATERStyle
FOODSERVICE PACKAGING & SUPPLIES



WE MASTER THE ART OF PRINTING

We handle all design and print services in-house, ensuring top-notch quality and efficiency. Whether you need to recreate or modify existing artwork, or want our expert designers to develop an entirely new brand concept, we've got you covered. We can also create mock-ups to give you a clear preview of the final product, helping you visualize the end result before artwork approval.

FOR ALL YOUR PRINTING NEEDS

1

Choose the products you need from our extensive portfolio. We offer a wide range of sizes in cold cups, hot cups, food containers, boxes, deli containers, napkins, and much more.

2

Customize your products with a vibrant palette! We offer multiple printing processes up to full process printing, varies by product. Check with your sales rep for details.

3

Submit your artwork to your sales rep in AI (Adobe Illustrator), EPS (Encapsulated PostScript), or high-quality PDF format for the best results.

4

Once your design is perfected, we will produce a digital file for your review and approval.

5

The printing process begins once your digital artwork file or mock-up is approved and the purchase order is received. Your custom printed products will be produced and delivered within our standard lead times.

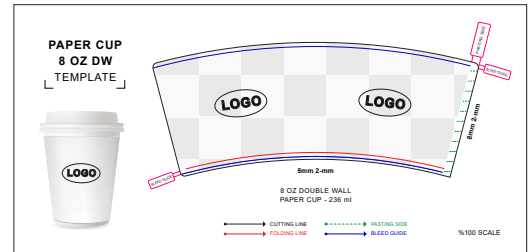




ARTWORK REQUIREMENTS



- Ensure that all shapes and fonts are outlined.
- Use a minimum font size of 8 pt in bold.
- Keep artwork elements in separate layers, avoid merging them.
- Embed all images and font at a resolution of 300 dpi or higher.
- Specify all colors using CMYK or PANTONE® Solid Coated/Uncoated Color Codes.
- While PANTONE® Solid Coated Colors are permissible, please note that not all colors may be achievable.



If your artwork is created using Photoshop or Corel Draw, please save it as a high-resolution PDF, AI, or EPS file.

A GUIDE TO PRINTING METHODS

SPOT COLOR PRINTING



Spot color printing utilizes a system of solid, pre-mixed colors known as PANTONE® colors. This method ensures color accuracy, as each hue is identified by a specific PANTONE® number. Spot color printing is generally more cost-effective when limited to three colors or fewer. However, due to the use of food-grade inks, not all PANTONE® colors can be achieved. Additionally, spot colors are difficult to replicate precisely on digital print devices like color laser printers. Please note that the same color may appear differently on various raw materials.

PROCESS PRINTING



Process printing, also known as CMYK or 4-color process printing, utilizes four primary colors: Cyan (C), Magenta (M), Yellow (Y), and Black (K). By mixing these colors during printing, a broad spectrum of colors can be achieved, far exceeding the basic four. While PANTONE® color codes can serve as a final color reference, it's important to note that not all PANTONE® colors can be accurately reproduced using this method.



PRINTING GUIDELINES & DISCLAIMERS

COLOR ACCURACY

When a PANTONE® color code is provided, the final product should match within 2 PANTONE® shades, either up or down (refer to the PANTONE® Solid Color book). However, due to the use of food-grade inks, not all PANTONE® colors can be perfectly achieved, and any substitutions will be made at the manufacturer's discretion.

INK ODOR

Due to the use of food-grade inks, a slight ink odor may be present in all custom printed products. Any potential replacements will be at the manufacturer's discretion.

PLATE CHARGES

Plate charges will not apply to reprint orders if the existing plates remain in good condition. Printing plates have a maximum lifespan of 18 months when unused. Customers will be informed if new plates are required for their reprint orders and billed accordingly.

MINIMUMS AND LEAD TIMES

All stated minimums apply per size and design ordered and are subject to change at any time. Due to the nature of custom printed products, there may be a +/- 10% variance between the quantity ordered and the quantity produced. Lead times are estimated and not guaranteed.

SELECT YOUR PRODUCTS



PET CUPS

Material: PET (Polyethylene Terephthalate) Plastic
Sizes (oz): 9, 9 Squat, 10, 12, 12-Squat, 16, 20, 24, 32
MOQ: 50k Units

PP CUPS/Car Cups

Material: PP (Polypropylene) Plastic
Sizes (oz): 12, 16, 20, 24, 30, 32, 40, 42, 44, 51
MOQ: 50k Units

Single Wall Hot Cups

Material: Kraft/White Paper and PE Coated (Polyethylene)
Sizes (oz): 4, 6, 8, 10, 12, 16, 20, 24
MOQ: 50k Units

Double Wall Hot Cups

Material: Kraft/White Paper and PE Coated (Polyethylene)
Sizes (oz): 4, 6, 8, 10, 12, 16, 20, 24
MOQ: 50k Units

Paper Cold Cups

Material: Paper and PE Coated (Polyethylene)
Sizes (oz): 12, 16, 21/22, 32, 44
MOQ: 50k Units

Standard Food Containers

Material: Paper and PE Coated (Polyethylene)
Sizes (oz): 3, 4, 5, 5.5, 6, 8, 10, 12, 16, 20, 24, 28, 32, Lid
MOQ: 50k Units

Heavy Duty Food Containers

Material: Kraft/White Paper and PE Coated (Polyethylene)
Sizes (oz): 8, 12, 16, 16-Squat, 26, 32, Lid
MOQ: 50k Units

To Go Boxes

Material: Kraft/White Paper, PE Coated (Polyethylene)
Sizes (lb): #1, #2, #3, #4, #8
MOQ: 50k Units

SOS/Grease Proof Bags

Material: Kraft/White Paper
Sizes (lb): #4, #5, #6, #8, #10, #12, #14, #16
MOQ: 50k Units, #4 100k Units

Paper Salad Bowls

Material: Kraft/White Paper and PE Coated (Polyethylene)
Sizes (oz): 35, 39, 46
MOQ: 50k Units

Food Trays

Material: Kraft/White Paper
Sizes (lb): 0.5, 1, 2, 3, 5
MOQ: 50k Units

Fry Scoops

Material: Kraft/White Paper
Sizes (lb): 8, 12, 16
MOQ: 50k Units

Buckets

Material: Paper, PE Coated (Polyethylene)
Sizes (lb): 64, 85, 130, 170
MOQ: 100k Units

PET Deli Containers

Material: PET (Polyethylene Terephthalate) Plastic
Sizes (lb): 8, 12, 16, 24, 32
MOQ: 50k Units

PP Deli Containers

Material: PP (Polypropylene) Plastic
Sizes (lb): 8, 12, 16, 24, 32
MOQ: 50k Units

Deli Sheets

Material: Greaseproof Paper/Paper
Sizes (lb): 10x10, 6x10.75, 12, 12, 15x15, 16x16, 18x18
MOQ: 50 cases, varies by size

Napkins

Material: Wood pulp, Virgin AT
Sizes (lb): Bev Naps, Dinner, Tall-Fold, Inter-Fold, Flat Packs, Lunch
MOQ: 50k Units, varies by size