



K9TS BOARDING MENU

AWARD WINNING SERVICES 2017-2024



K9 TAILSHAKERS
CANINE ACTIVITY CENTER

BOARDING

Overnight Boarding \$60

Per Night/Per Dog.

Boarding Deposit \$50

A \$50 Deposit is required at the time of booking. This \$50 deposit will be applied to your invoice at check out. If cancellations are within 48 hours of drop off date, your deposit will be non-refundable.

Late Pick Up Fee \$20

Boarding Dogs must be picked up by noon on their scheduled go home day

Day Boarding \$35

This fee is for those who board just for the day. No activities.

Holiday Charge \$10

HOLIDAY CHARGE ALERT: On Christmas, New Year's, Easter, 4th of July and Thanksgiving, we're throwing on a \$10 Holiday Charge just for those special days! This extra income is all for our amazing staff, who are missing time with their family to keep your furry pals wagging their tails in delight!

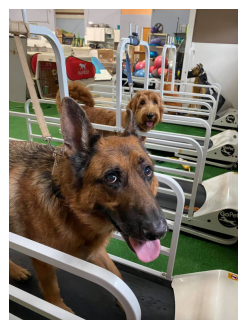
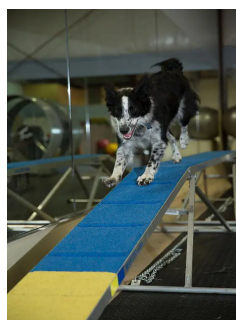
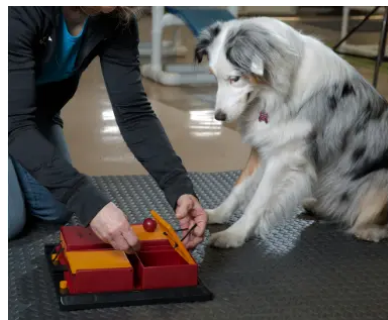
Add On Calming Aids

Adaptil Calming Spray \$5

Utilizes the power of natural pheromones to create a sense of safety and calm. About 8 sprays per treatment will last 4-5 hours. Sprayed on towel, sheet or bedding.

Add on Activities \$17 Each / 15 min. each

- Agility For Fun
- Treadmill
- Kg Fitness
- Puzzles
- Private Play
- Belly, Brush & Butt Rub
- Walks



SPECIALS

Pup Cup \$3

Seasonal Ice Cream Treat \$3

Ask us what our Seasonal Ice Cream Treat is!

Valentine Pancake Breakfast \$10

Pancakes with a dollop of yogurt and strawberries paired with strawberry Paw Print Ice Cream.

Meal, Treat & Meal Topper Menu

Please ask for our Complete Meal & Treat Menu

Christmas Peas On Earth \$20

Peas on Earth Cakes, Sugar Snap Peas & Merry Berry Ice Cream Bone

Thanksgiving Feast \$20

White Turkey Slices, Sweet Potatoes & Pumpkin Paw Print Ice Cream

CBD Calming Chews \$2

CBD Soft Chews Organic Full Spectrum CBD oil - 2 mg per chew.

\$2 each Chew

1 CBD Chew = 2mg

Doses CAN be split between AM and PM.

Up to 20lbs = 1 chew

up to 40lbs = 2 chews

up to 60lbs = 3 chews

up to 80lbs = 4 chews

and so on