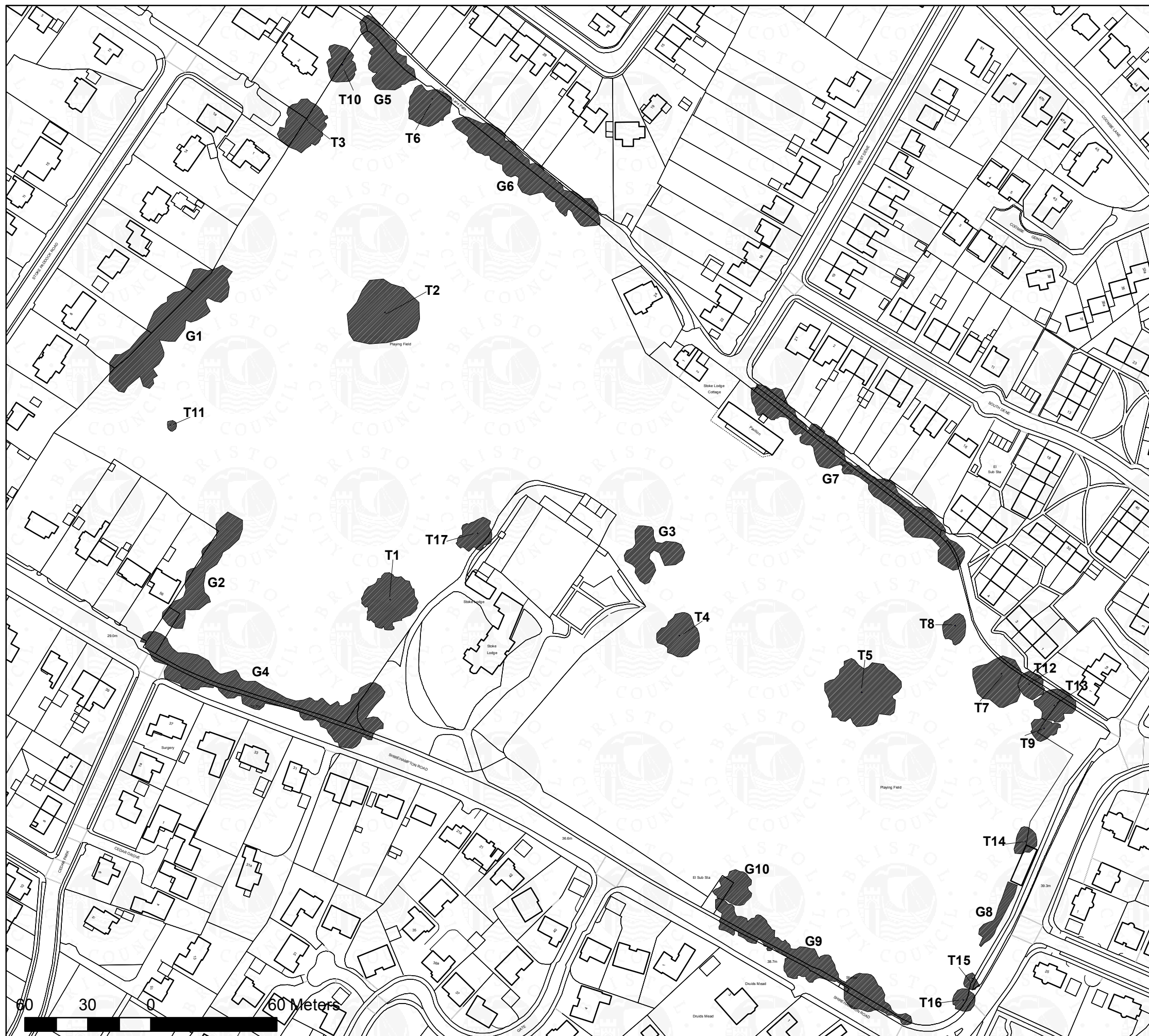




CITY DEVELOPMENT  
**TREE PRESERVATION ORDER**  
**STOKE LODGE PLAYING FIELD**  
**SHIREHAMPTON ROAD**  
**BRISTOL**



- T1 - Lucombe oak - *Quercus x hispanica*
- T2 - Lucombe oak - *Quercus x hispanica*
- T3 - English oak - *Quercus robur*
- T4 - Turkey oak - *Quercus cerris*
- T5 - Turkey oak - *Quercus cerris*
- T6 - Common beech - *Fagus sylvatica*
- T7 - Turkey oak - *Quercus cerris*
- T8 - Corsican pine - *Pinus nigra 'Laricio'*
- T9 - Corsican pine - *Pinus nigra 'Laricio'*
- T10-English oak - *Quercus robur*
- T11-English oak - *Quercus robur*
- T12-Turkey oak - *Quercus cerris*
- T13-Turkey oak - *Quercus cerris*
- T14-Sycamore - *Acer pseudoplatanus*
- T15-Sycamore - *Acer pseudoplatanus*
- T16-Ash - *Fraxinus excelsior*
- T17-Common walnut - *Juglans regia*

- G1 -Corsican pine - *Pinus nigra 'Laricio'*
- Norway maple - *Acer platanoides*
- Monterey cypress - *Cupressus macrocarpa*
- Common beech - *Fagus sylvatica*
- Black poplar - *Populus nigra*
- Ash - *Fraxinus excelsior*
- G2 -Sycamore- *Acer pseudoplatanus*
- Common beech - *Fagus sylvatica*
- G3 -Common walnut - *Juglans regia*
- Sweet chestnut - *Castanea sativa*
- G4 -Sycamore- *Acer pseudoplatanus*
- Common beech - *Fagus sylvatica*
- Holly - *Ilex aquifolium*
- Ash - *Fraxinus excelsior*
- G5 -Sycamore- *Acer pseudoplatanus* "
- Copper beech - *Fagus sylvatica 'Purpurea'*
- Ash - *Fraxinus excelsior*
- White poplar - *Populus alba*
- G6 -Common beech - *Fagus sylvatica*
- Small-leaved lime - *Tilia cordata*
- English oak - *Quercus robur*
- Wild cherry - *Prunus avium*
- G7 -Sycamore - *Acer pseudoplatanus*
- Holly - *Ilex aquifolium*
- Ash - *Fraxinus excelsior*
- G8 -Sycamore - *Acer pseudoplatanus*
- G9 -Sycamore - *Acer pseudoplatanus*
- Ash - *Fraxinus excelsior*
- G10-Sycamore- *Acer pseudoplatanus*



Copy of TPO No 1192  
 Grid Ref: ST 5576 NE  
 355795E 176728N

Produced by the Corporate GIS Team :

**Not to Scale**