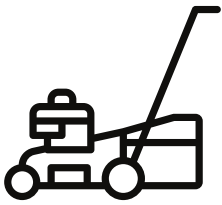


# LIFE AT ANNALUE RIDGE

---

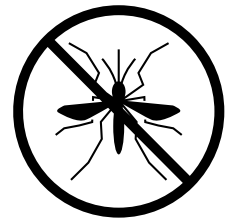


## PROFESSIONALLY MAINTAINED GROUNDS

Full service lawn care & landscape maintenance is provided for all homes within Annalue Ridge. Take pride in knowing the grounds are kept in pristine condition, wherever life takes you.

## RESPONSIBLE MOSQUITO PREVENTION

Solutions that target biting insects (including mosquitos, fleas, and ticks) are applied every 21 days (March through October) throughout the Annalue Ridge community.



## PRIVATE DRIVE

A private drive meanders gracefully through stately white-oaks and the enclave of ten distinguished homes. This private drive allows for the option of a gated community - subject to future vote & HOA approval.

## SAUGAHATCHEE COUNTRY CLUB

As an Annalue Ridge property owner, you will have the opportunity to join East Alabama's premier private club. Membership to Saugahatchee Country Club is advantageous and designed to support the many facets of daily life. \*Initiation fee waived.



## LOCATION

Annalue Ridge is located inside Auburn's inner loop with fantastic proximity to the area's premier restaurants, schools, entertainment venues, golf courses, and more. Did you know Annalue Ridge is less than 1.5 hours away from Hartsfield-Jackson International Airport?