



GGRS Gazette

August, 2022

Official Newsletter of the Georgia Garden Railway Society

President's Message



Wow - it's been a busy month! Our 5000-mile adventure to Colorado was a thrill. And with the 'few' things we picked up our train garden was ready for GGRS friends just a short week later! I would like to thank Terry and Peter for sharing!

Who knew train gardens should be planned on paper first. Or that the government is so efficient at running a railway system.

Mark your calendars so you don't miss the August adventure south to the Manning's (always a treat). Alan will share a bit about adding sound in your layout as part of the meeting.

Our calendar is full for the rest of the year. If you are considering stepping up to help a show or host a gathering in 2023, please let me know.

Juliet Foster

In This Edition

President's Message.....	1
Colorado Railroading.....	1
Track Warrants.....	6
Ride the Rails.....	7
At the Depot.....	8
GR News YouTube.....	11
Rip Track.....	12
Train Slang	14
Yard Hostler.....	15

Colorado Railroading



John Lank sent this photo from the group that went to Colorado. I am not sure if I regret missing the convention or eating with the group at gatherings more. I am sure they had a great time no matter where or what they

were doing. Colorado trains are fantastic, whether G scale or 1:1, You will see some photos of the events in the following pages.



Pike's Peak has a new train. Here it is on a rather level grade. NOT even close to the grades once the train started up the mountain.

Continued on page 2

Someone already repainted an LGB “White Pass” diesel to match the paint given it on the Durango & Silverton.



Probably best view of any garden railroad at convention. Station is a Banta kit. Goose is Accucraft. Background is,....well.....



GGRS, Denver Convention, and 1:1 Scale Train Rides By Ted Yarbrough

Denver has again hosted a great National Garden Railroad Convention. 2022 was their 9th time to host! The GGRS sent a delegation of 17 members west and they enjoyed everything, including pre and post tours, BBQ, layout tours, clinics, and THE VENDOR HALL!

The GGRS delegation included Dennis & Ellen Bass, Dave Bergman, Michael & Suzanna Carney, Juliet Foster & Alan Luebs, Phil & Barbara Jones, John & Carolyn Lank, Dan & Carol Steidle, Elliott & Katherine Stotler, and Ted & Deborah Yarbrough. Most members chose to drive out and made the convention experience a long cross-country vacation. The few who flew to Denver reported little or no trouble with airports, airlines, or rental cars.

Several went on the Monday pre-convention tour to Pikes Peak. Due to scheduling conflicts, the Cripple Creek and

Victor 2 ft. gauge RR was removed from the trip, and the Colorado Springs Trolley Museum was substituted. The group got to experience brand new train cars, relayed track, and new observation station at the top of Pikes Peak (along with very cold temps and high winds at the top of the 14,115 ft peak). This event served as our first 1:1 scale train ride of 2022.

Layout tours were visited Tuesday through Friday mornings with encore visits to some layouts on Saturday. The Mays, Poncar, Cushman, Keiser, Elworthy, Dunlap, Sears, Reid, Gross, and Strong were my favorites (but all were VERY nice). It seemed each time we visited a garden railroad we commented, “this is my favorite.” Then we went to the next one and made the same statement. Naturally, the garden railroad at the Colorado Railroad Museum was spectacular. I have been to three Denver conventions, this was my third visit to several, second to a few, and first time to visit many (as there were SEVERAL NEW GARDEN RAILROADS and this fact was encouraging).

The vendor hall was full. PIKO and USA Trains were noticeably absent, although their products were available at various booths. RLD Hobbies was not there. Starr Hobbies, Reindeer Pass, Bridge Masters, Accucraft, Train-Li, Rail Pro, Bridgewater, Bachmann, Gold Coast Station, G Scale Junction, G-Scale Graphics, LGB, Michael’s Custom Woodworking, Soundtraxx, GR News, and our own Split Jaw Products and several others were in attendance filling the vendor hall. A live steam track, the Denver Garden Railway Society, and the Traveling Railroad were all on display inside the vendor hall as well. The convention had a company store that stayed very busy throughout the convention, especially each afternoon.

AMTRAK through the Rockies ended the convention trip with the last GGRS 1:1 scale train ride. Several originally signed up, but due to a number of other activities and circumstances, only Deborah and I ended up taking this trip. Scenery was spectacular with over 30 tunnels between Denver and Glenwood Springs. Mountain streams, deep canyons, and rock cliffs were observed all along the trip. Glenwood Springs is home to Doc Holiday’s grave (OK Corral participant with ties to Georgia), hot springs, historic hotels, and many great restaurants are featured at this destination. We rode westbound on Saturday and eastbound on Sunday. The Saturday train was on time and the Sunday train was about 1 ½ hours late. It was a great way to end the 2022 National Garden Railroad Convention in Denver, Colorado!

Ted & Deborah Yarbrough, Ellen & Dennis Bass, John & Carolyn Lank, Barbara & Phil Jones, Mrs. & Mr. Swerer (from Alabama and friends of Phil), Carol & Dan Steidle at the Colorado Train BBQ.



Union Station in Denver.



At one time, Moffet Tunnel was the longest tunnel in US, and is approximately 6 miles long, Moffet Tunnel goes under the Continental Divide. (Cascade tunnel at 7.8 miles in Washington now holds the record).



AMTRAK in Glenwood Springs.

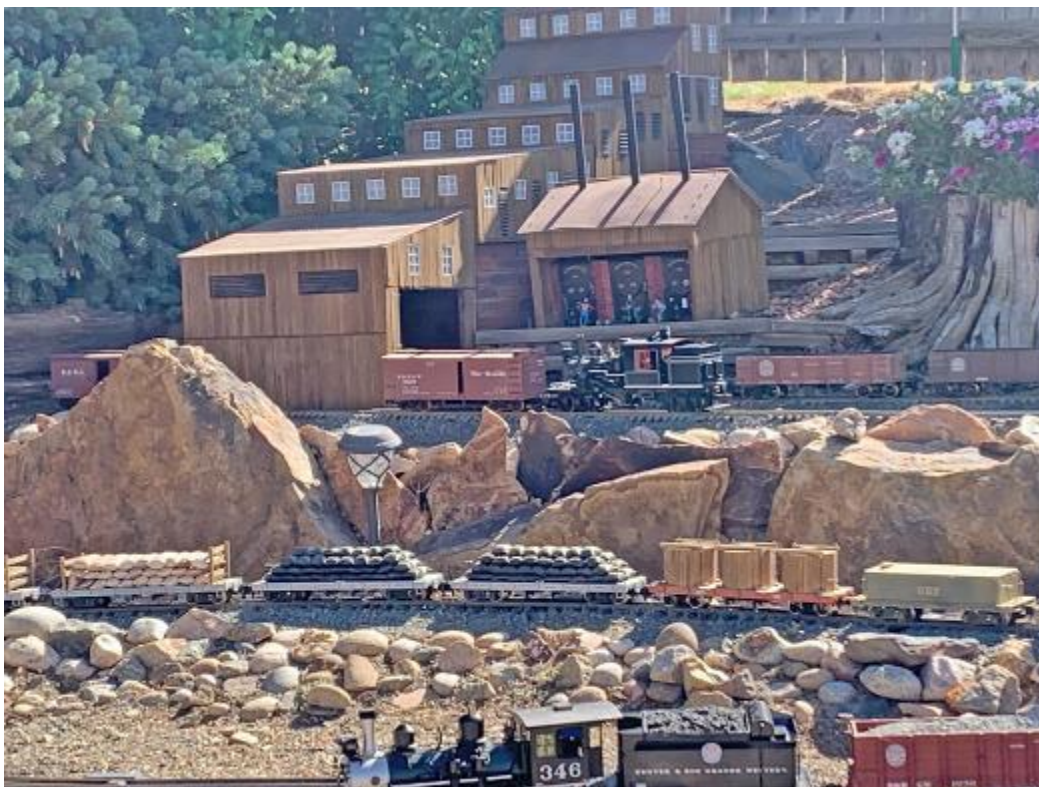
Santa Clara, CA is the next stop!

2023 Convention booth.



On the return trip to Denver out the back window of the AMTRAK train, The Rocky Mountaineer Train was on its way to adventure among the mountains.

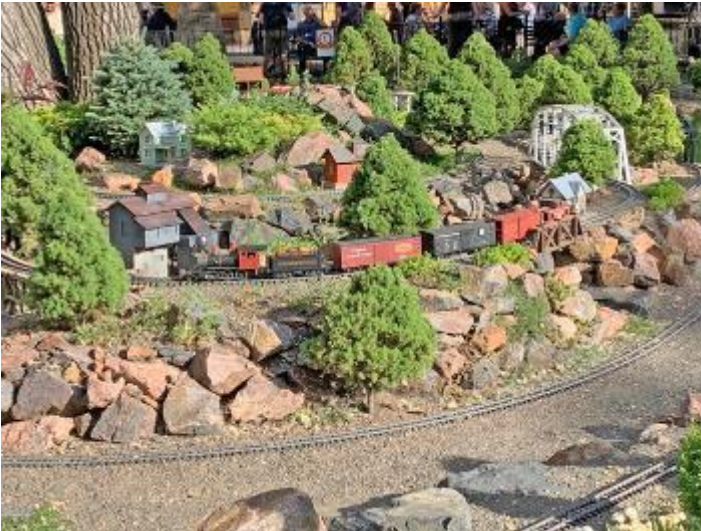




One of my favorite garden railroads. Visited this one before (2015 probably).



Second Banta depot we saw on tours. Laser cut wood kit. Nice, but nice price as well (\$600+).



Colorado Railroad
Museum Garden
Railroad

Track Warrants

Event	Location	Date	Status
GGRS Aug 2022 Meeting	Terry and Ginny Manning 1201 Timber Glen Ct. SW Lilburn, GA	Aug 13, 2022 10:30 - 2:30	Mt. Jefferson is ready
61st Atlanta Model Train Show	Gas South Convention Center (formerly Infinite Energy Forum) Duluth, GA	Aug 27, 2022	No current Display assigned
GGRS Sep 2022 Meeting	Phil and Barb Jones	Sep 10, 2022	In Planning Stage
GGRS Oct 2022 Meeting	L&N Depot, 150 Railroad Avenue Mineral Bluff, GA.	Oct 8, 2022	Ride the Rails: 1:1 rides, layout, picnic & more

Coming A-Track-shunts

August in Mount Jefferson

The residents of Mount Jefferson and employees of the Southern Ohio Railroad, the Serengeti Tourist Railway, and the Continental Circus invite the members of Georgia Garden Railway Society and their guests to attend the railway displays of Terry and Ginny Manning in Lilburn on Saturday, August 13, from 10:30 to 2:30. Previous visitors will find an enlarged outdoor display of the town of Mount Jefferson and a new indoor Continental Circus Railway display – both are the largest of their kind in Georgia. First-time visitors will find a unique display of accessory buildings and characters including the Serengeti Wildlife Preserve and Zoo, a camping grounds, Boy Scout camp, three large farms, and a town of several dozen businesses.





Ride the Rails



A Fundraiser to benefit Tri-State Model Railroaders and the Historic Mineral Bluff Depot!



When: July 2 & 3, **October 8** & 9, November 25 & 26, 2022

October 8 GGRS Meeting / Display table / Layout

Motor Car trips continuously scheduled from Noon through 4pm

Where: Historic L&N Depot, 150 Railroad Avenue, Mineral Bluff, Georgia 30559

Fun to be had: A 5-mile round-trip ride by Railroad Motor Car traveling through the Iron Bridge over the beautiful Toccoa River to Murphy Junction and returning over the bridge back to the Historic Mineral Bluff Depot. Then take a short ride on the genuine Railroad Hand Car. Real fun for all ages.

Special for children: Ride the miniature 7 ½ gauge hand car for free! Also, visit inside the Depot and see the progress being made on the large "HO Scale" model railroad based on the L&N Railroad's "Old Line" from Atlanta, Ga to Etowah, TN and the branch line through Mineral Bluff to Murphy, North Carolina. Come see everything that's new!

Suggested Donation: MOTOR CAR- \$15.00 - Adults 18+

Free - Youth 0-17 with paid adult

HAND CAR - \$ 2.00 - Per person/per trip

Mini Hand Car - Free - to all ages

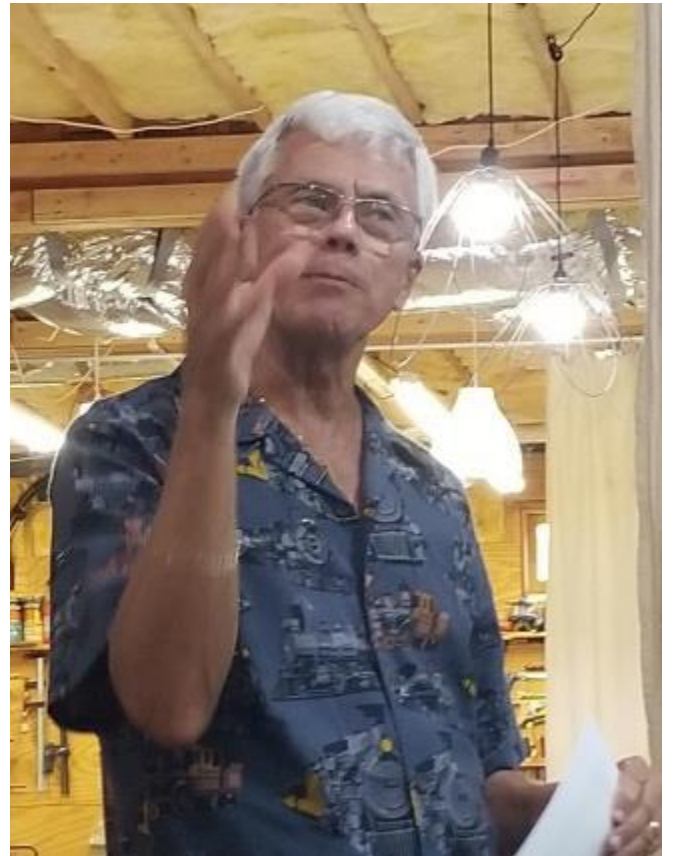
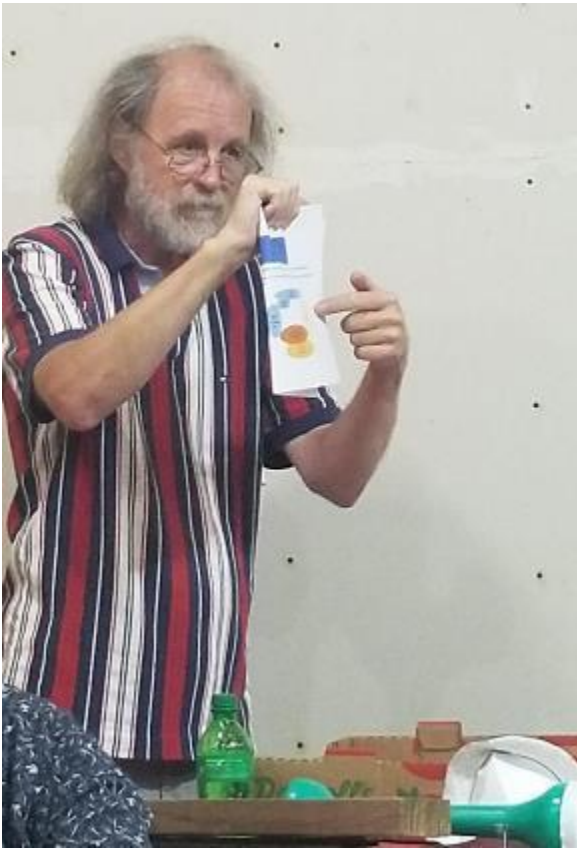
Come ride the Motor Cars

At The Depot



Alan and Juliet hosted the July Meeting soon after returning from Colorado. Two clinics were given by Peter Thomas and Terry Manning.









Our new YouTube channel will feature photo journals and videos of the wonderful World of Garden Railroads. The first post - Images of many of the railroads open in Denver - was viewed 450 times in the its first week .

We will also post short videos of individual garden railroads. The first video from Jess Hughes is up now! If you are interested in a wider platform for short videos of your garden railroad, con-tact Mick Spilsbury at marketing@grnews.org Videos less than 3 minutes are ideal. We will rarely post a video longer than 5 minutes.

You can find the channel at:

<https://www.youtube.com/channel/UCmuyDnk2QRy1e1Q1AMFXrJw>

The Rip Track

**Need Repairs? Supplies?
Buy Good Stuff from
our Members**

Members with Garden, Train, or other related items to sell (new or used) can submit their items for inclusion in "The Rip Track". Send information to the editor for the next issue. Items will run for a single issue, unless the editor is notified to repeat the item. (Quality photos appreciated) Members with related business advertising may also submit ads. These will run continuously until policies change or notice is given. Non-member publishing by arrangement. (Contact Editor for details.)



“The truth is not in the touch of a stone, but in what the stone tells you.”
Rene Denfeld

sticksNstones@weegrr.com

Engineer's Wish List

Sally Bando | 404.550.4816 | sbandogeorgia@comcast.net

Machine embroidery designs & themes on shirts and gifts. Prices upon request. Company and group projects welcome.

Embroidery Design and Gifts
Georgia Garden Railway Society
Club Shirts
Each Shirt will have the club logo on included in the price.



Contact Sally for other designs

Men's	S	M	L	XL	2XL	3XL	Price
Grey Pocket t-shirt							\$10.00
Carbon or Burgundy Polo							\$20.00
Carbon or Burgundy Pocket Polo							\$20.00
Long Sleeve Denim							\$22.00
Short Sleeve Denim							\$22.00
Name on Men's Shirt (Specify Name)							\$5.00
Ladies	XS	S	M	L	XL	2XL	Price
Grey T-shirt							\$10.00
Carbon or Burgundy Polo							\$20.00
Long Sleeve Denim							\$22.00
Name on Ladies shirt (Specify Name)							\$5.00



Train Installations, LLC

Woodstock, GA 30188

770-597-0038

dave@traininstallations.com

Check out our online store and updated website at www.traininstallations.com

We can help you with any part of your model RR project no matter what scale it is.

- Layout planning and CAD drawings
- Custom bridges
- Overhead RR systems
- Model kit assembly
- Train storage shelving

Thanks - Dave 770-597-0038

Now is a better time than ever to distract yourself with the hobby of model railroading! Let us know how we can help.



Train Slang: How much Railroad Slang do you know? (Cont....)

Gonna go through the A.B.C.'s of Railroad Slang in the next few issues, 20 at a time.

- Hogger: Locomotive Engineer
- Hotbox: Overheated wheel bearing
- Hotbox Dick: A car inspector
- Hotshot: A fast train
- Jailhouse Spuds: Waffled potatoes
- Jerkwater: Small town or local train
- Jerry Gang: A section crew
- Jungle: Hobo camp
- Junk File: A worn out locomotive
- Keester: A suitcase or trunk
- Kettle: A small locomotive
- King Pin: Conductor
- Lamb's Tongue: A fifty cent tip
- Lizard Scorcher: The Cook
- Main Pin: Railroad Official
- Lizard Scorcher: A cook
- Make-up: Assemble cars into a train
- Mountain Pay: Overtime
- Mud Chicken: A surveyor
- Mule: A brakeman

Trains during WWII

One of the great train movies of all times was "The Train" with Burt Lancaster. The 1964 war film, directed by John Frankenheimer, starring Burt Lancaster, Paul Scofield and Jeanne Moreau, was loosely based on the non-fiction book *Le front de l'art* by Rose Valland, who documented the works of art placed in storage that had been looted by the Germans from museums and private art collections.

Set in August 1944 during World War II, it pits French Resistance-member Paul Labiche (Lancaster) against German Colonel Franz von Waldheim (Scofield), who is attempting to move stolen art masterpieces by train to Germany.

Train movements were of great help in moving supplies and personnel across Europe and were extensively used by both sides. They were also prime targets for sabotage, derailments, and bombing runs.

What happens when a bomb hits a train?



Bomb hits train...train goes boom! Right? But not always with the results one expects.

In 1942, a German fighter while on a bombing mission shelled a British steam engine. The pressure blew the locomotive boiler apart, tore away the chimney, dome and safety valves. The explosion was so powerful it propelled a portion of the top rim of the chimney almost a quarter of a mile. At the precise moment the boiler exploded the fighter was passing overhead and destroyed it. The train driver survived. The pilot didn't.



Yard Hostler

Hot time in the South. While many were in Colorado, and later at Alan and Juliet's Layout, I was in Savannah, GA for the Sons of the American Revolution National Congress, hosted by the Georgia Society. It was HOT!, and stormed every day, usually when I was baking in my wool uniform. Then, after soaking in the sweat of the day, everyone got drenched by rain before we could get back inside. OOOh, to be in the mountains of Colorado.

I can see by the photos that everyone enjoyed the July meeting as well. I am looking forward to some railroading at Mt. Jefferson in August. Till then, keep the steam up..... But stay cool too!

Don't forget to submit !

Emil Decker, Editor, GGRS Gazette
480 Grizzle Rd., Dawsonville, GA 30534

eldecker@windstream.net

