



# GGRS Gazette

## December, 2021

Official Newsletter of the Georgia Garden Railway Society

### President's Message



This Thanksgiving I am grateful to my GGRS friends! I continue to be impressed with each and everyone I meet. I am reminded of our collective passion for trains and respect for each other all the time! Thank you for allowing me to serve as interim 2021 President. I am sorry to miss the last gathering of the year. Enjoy! It should be a wonderful start to the holiday season.

I look forward to seeing you at our Annual January holiday gathering.

The Botanical Garden is way short on locomotives. Do you know anyone who would like to donate one to them? You can write it off because they are a 501c3.

Happy Holidays,

*Juliet Foster*

#### In This Edition

President's Message.....	1
GA Christmas Trains.....	1
Track Warrants.....	5
Whistle Stop.....	6
Gandy Dancers.....	12
Ribbon Cutting.....	14
Highballing Down the Track.....	14
History of Christmas Trains.....	15
Rip Track.....	16
Yard Hostler.....	19
Appendix A.....	20

## Christmas Train Rides in Georgia

Trains and Christmas go together like Christmas and Trains. There are several options in Georgia where one can put the two together this season. As per the last year of insanity, check for Covid-19 Restrictions / Precautions before making plans. 10 Georgia options:



### #1 Blue Ridge Scenic Railway

A visit with Santa is magical, especially when you're headed through the mountains on the Blue Ridge Scenic Railway alongside the winding Toccoa River. A daytime

ride on the Santa Express is best for young children, lasting only an hour. All children get a traditional bell and a candy cane. Older kids (and adults) will enjoy the four-hour adventure with a stop in the border town of McCaysville / Copperhill for dining and shopping. <https://brscenic.com/>

### #2 Atlanta Botanical Garden Holiday Ride-on Train

[Garden Lights, Holiday Nights](#) is a favorite nighttime holiday treat, with millions of lights illuminating the downtown gardenscape at the Atlanta Botanical Garden. Holiday cheer continues during the day when visitors can enjoy a G-scale train and trolley winding through a mountain village town. The miniature metropolis is not the only train show; kids can enjoy a turn on the Holiday Ride-on Train. Plan



ahead because tickets are extremely limited for Garden Lights, Holiday Nights. Holiday Ride-on Train rides are offered Saturdays and Sundays Nov. 14, 2021, through Jan. 3, 2022.

<https://atlantabg.org/>

Continued on page 2

## Christmas Train Rides in Georgia (Cont.)

### #3 Stone Mountain Park Sing-along Train

[Stone Mountain Christmas](https://www.stonemountainpark.com/) is an event for all your senses. Visit the Snow Angel in her palace and see Polar Express in 4D. If you ask me, though, the highlight is a ride on the Sing-along Train. Carol with the other passengers along this five-mile route around the mountain. There is no extra charge; it's included with admission! <https://www.stonemountainpark.com/>

### #4 Southeastern Railway Museum

When Santa's reindeer are taking a breather, you'll find him at the [Southeastern Railway Museum](https://www.facebook.com/SoutheasternRailwayMuseum), where he can pick from more than 90 pieces of railway equipment, all perfect for delivering presents. Enjoy refreshments and entertainment as you mingle with Santa and his elves, and take a ride with Santa at the museum. Kids can also write letters to Santa and have pictures taken in an historic setting for family keepsakes. Follow the museum on Facebook <https://www.facebook.com/SoutheasternRailwayMuseum> for updates.



### #5 SAM Shortline Excursion Train

Head to southwest Georgia for multiple holiday adventures on the 1949 vintage cars that are part of the SAM Shortline Excursion Train. The [Cordele Holiday Train](#) is a 1-hour trip from Cordele, and passengers receive hot chocolate and cookies while Santa hands out gifts. The [Candy Cane Express](#) from Cordele includes a two-hour layover in Plains, where passengers can shop the retail stores on Main Street and explore the Jimmy Carter National Historic Site Museum. Don't miss the Plains Christmas Lighting ride from Cordele to Plains on Nov. 27, 2021, to see the annual Christmas Lighting Parade and lighting ceremony!



## Christmas Train Rides in Georgia (Cont.)

### #6 Linger Longer Express

Just in time for the holiday season, straight from the North Pole to the [Ritz-Carlton Reynolds](#), Lake Oconee, the Linger Longer Express is all decked out and ready for resort guests of all ages to hop aboard and sing along to a few Christmas classics. Rides depart from the front drive daily at 11 a.m. and 3 p.m. Make sure to bring your camera to capture some great images of the property along the way.



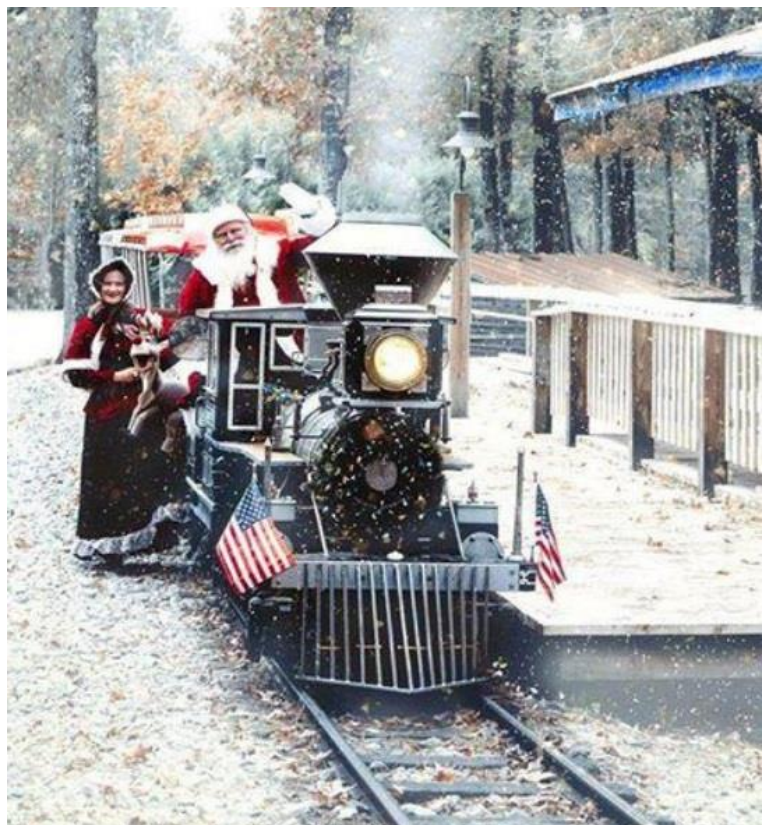
### #7 The Santa Special

On the [Georgia Coastal Railway](#), the magic of Christmas comes alive during the Open Air Railcar Experience, when Jolly Old St. Nick, along with his elves, board the train. Enjoy entertainment all along the way. Or you can choose the Santa Special, which features an interactive, family-friendly adventure with heroes Mason and Molly on a quest to save Christmas. Santa makes an appearance along with the Snow Queen, elves, snow people and more.



### #8 Pine Mountain Gold Museum Winter Wonderland Train

Join Santa, Mrs. Claus, Rudolph, The Grinch and more holiday characters at the [Pine Mountain Gold Museum](#) for Winter Wonderland Train rides on Wednesdays through Saturdays. Meet the Winter Queen, who can make it snow on command, and hear stories and sing songs while you wait on the train. Families will enjoy riding the festively decorated train for almost a mile to see the twinkling lights. *(Note, the rides might be canceled in inclement weather. Check the museum's Facebook page for the latest information.)*



## Christmas Train Rides in Georgia (Cont.)

### #9 The Azalea Sprinter Santa Train

Our 1:1 host this year, CaterParrott Railnet's [The Azalea Sprinter](#), is a relatively new tourist line in Georgia, but they were quick to bring online a Santa Train. You will meet Santa and be served complimentary hot chocolate during the 1 hour round trip from Nashville to Ray City. Schedule quickly for Dec. 11, 12, or 18th. The 19th train is already sold out!

[EZticketapp](#).

### #10 Tennessee Valley Railroad: Not Georgia, but close enough

This train tradition has been around since 1999. Join us for a little after Christmas cheer on board the "[Holiday Lights Train](#)." This ride offers a rare after sundown ride featuring all our festive holiday lights. Be sure to grab a tasty, fresh baked snack from our Depot Deli to enjoy on your ride.



The [Hiwassee Holiday Train](#) is a round-trip one-hour and 15-minute ride along the beautiful Hiwassee River Gorge. Features of this ride include: writing a letter to Santa, a fresh-baked cookie, and Mrs. Claus's favorite hot chocolate. Santa will not be on the train — but you will get to see him! A keepsake boarding pass and holiday bell will be given to every passenger. Masks are required while on the train.

**NOTE: Santa will NOT board the train this year due to COVID-19.**

### Celebrate the Holidays with a Train Ride & Fine Dining

[Christmas Dinner train](#) trip includes a four-course dining experience onboard restored dining and pullman cars. The excursion trains depart from Chattanooga's Grand Junction Station, traveling at a leisurely pace through portions of urban East Chattanooga before reversing direction and returning to Grand Junction. The travel time is just right for a complete meal on a vintage dining car. Our Christmas Dinner Trains are one of our most popular excursions and for good reason! Our Dining Car Superintendent and his team of Dining Car Stewards and Chefs provide exceptional customer service and delicious food, all prepared and served in historic dining cars. A meal on the Dinner Train is like stepping back in time and is the perfect way to celebrate a special occasion!

### Celebrate New Year's on a Train!

[New Year's Eve Dinner train](#) trip includes a four-course dining experience onboard restored dining and pullman cars. The excursion trains depart from Chattanooga's Grand Junction Station at 7:00 p.m., traveling at a leisurely pace through portions of urban East Chattanooga before reversing direction and returning to Grand Junction. The travel time is just right for a complete meal on a vintage dining car.



The Tennessee Valley Railroad Museum is pleased to offer this unique opportunity for you to enjoy, not only a rail excursion trip, but also fine dining en route while the train travels along the rails. We encourage you to choose your entrée when booking your tickets. You may choose from true vintage dining in the Dining Car (four to a table) or Pullman Car Clover Colony (two per table for a slight premium charge).

<https://www.tvrail.com/>

## Track Warrants

Event	Location	Date	Status
Atlanta Toy and Model Train Show (Terminus Chapter)	4764 Cobb Parkway NW, Acworth, GA (VFW Post)	Dec 04, 2021	9a.m. - 2 p.m.
"Festival of Trains"	Tellus Museum 100 Tellus Drive, Cartersville, GA	Dec 11 - 12, 2021	
January Annual Business Meeting & Luncheon	Provino's Restaurant 440 Ernest W Barrett Pkwy NW #1 Kennesaw, GA	Jan 8, 2022	\$25 value RR Steal My Gift Exchange Game
Trains, Trains, Trains	Southern Museum of Civil War and Locomotive History Kennesaw, GA	Jan 29 - 30, 2022	In Planning Stage
2022 Model Train Expo	Chatsworth Depot	Apr 09, 2022	In Planning Stage
GGRS Apr 2022 Meeting	Dennis and Ellen Bass 1972 Lansbury Court, Snellville, GA	Apr ? 2022	In Planning Stage
GGRS May Meeting Southside Atlanta Consortium 2022	Multiple: At least 4 ! Peachtree City and outlying area.	May 2022	In Planning Stage



# SOUTHEASTERN RAILWAY MUSEUM

## NEED TO ADD A LITTLE IRON TO YOUR DIET? WE ARE LOOKING FOR VOLUNTEERS!

No matter what your interest or skill set, the Southeastern Railway Museum offers fulfilling opportunities to get involved. Our dedicated volunteers bring transportation history to life, helping visitors appreciate and understand the cultural, technical, and economic impact of transportation in our region – and they have fun doing it! Museum volunteers come from a wide range of backgrounds, range in age from high school students to retirees and include both men and women.

What do our volunteers do? Here are just a few areas: Train crews, Equipment Restorations, Gift Shop, Birthday Party Hosts, Exhibit Construction, Maintenance, and Repair, Landscaping, Tours and Computer Support.

## INTERESTED IN JOINING THE FUN?

To learn more, go to <http://www.train-museum.org> then click on the Support Us button, then Volunteer.

### Whistle Stop



# North Georgia Live Steamers



1632 Centennial Olympic Parkway, Conyers, GA  
(Across from Hawthorn Suites)

Our November meeting was on November 20th at the North Georgia Live Steamer's layout in Conyers. Host provided Chili(s) and, as always, everyone else brings the sides. The NGLS were invited to join us for lunch. We

had plenty of chili to go around. Emil made traditional beef and bean chili, as well as a chicken and white bean chili. Rob brought a venison chili, which had to have contained a whole deer load of meat and veggies. All was tasty, and with the chilly temp and constant breeze, the warm food was well received. Emil and Linda Decker served as hosts. Counting GGRS attendees and the NGLS, we probably fed over 65 plus individuals.

There is just something about a ride-on train that takes you that one step further than watching from the side of a layout. Being immersed in the



layout.....well. Fun, fun, fun for our final event of this 2021 year.

Dennis Bass volunteered to help do an early run "Track Inspection."

The live Steamers run about 4 public sessions each year, and this was the last for 2021. From what I could see, every time I



We are in need of engineers and conductors. No experience need just an interest in having fun. For more information contact [Robby Mossman](#) for additional details.

Contact Robby Here:

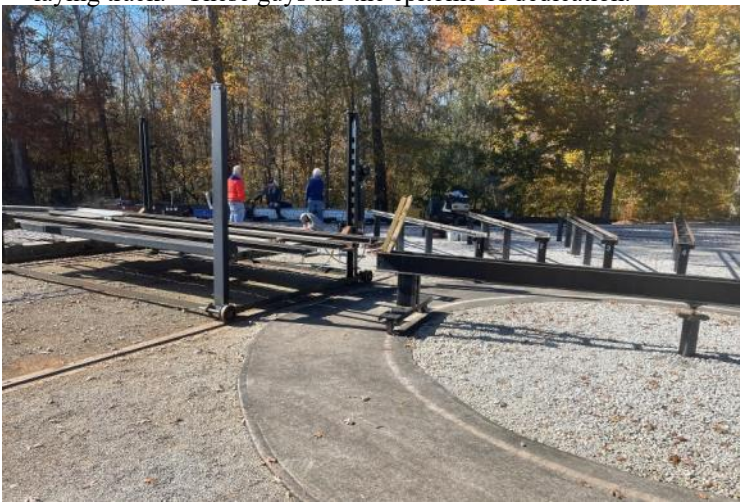
<https://northgeorgialivesteamers.org/secretary?ct=f%28Come+Ride+Trains+with+North+Georgia+Live+Steamers%29>





The Yarboroughs said, "Our great nephew enjoyed seeing the trains today. He LOVES garden trains, but these were a little intimidating!"

Who wouldn't be? Consider building these from scratch material, milling and lathe work, bending, drilling, welding, all sorts of fabrication over decades of time, not to mention the money and love labor involved. And the coal fired steam engines were as complicated and accurate as their big brothers. Then spend time laying track. These guys are the epitome of dedication.



The Armstrong Turntable, round house style stalls, and a powered transfer table make loading and unloading these massively heavy trains possible.



The gauge is 7.5". The turn-out / points mechanism has to work flawlessly to avoid derailments at each junction. There were hundreds of turnouts.

A train passed by loaded with a whole group of GGRS members.







It was even cold enough for the conductor in the caboose to fire up his stove. Look closely and you will see smoke coming from the stovepipe.

Waiting for a passing train to join in the locomotive parade. As many as 5 - 7 engines were operating at the same time; distance of dispatching keeping all trains and passengers safe.

Just one of the many impressive steam engines hand built and working just as in the old days.... Fuel, fire, steam, and drivers pulling a load of passengers behind.





Even Roy wasn't going to wait for an L&N to show up. He hopped aboard a west bound with Pam and Lori.

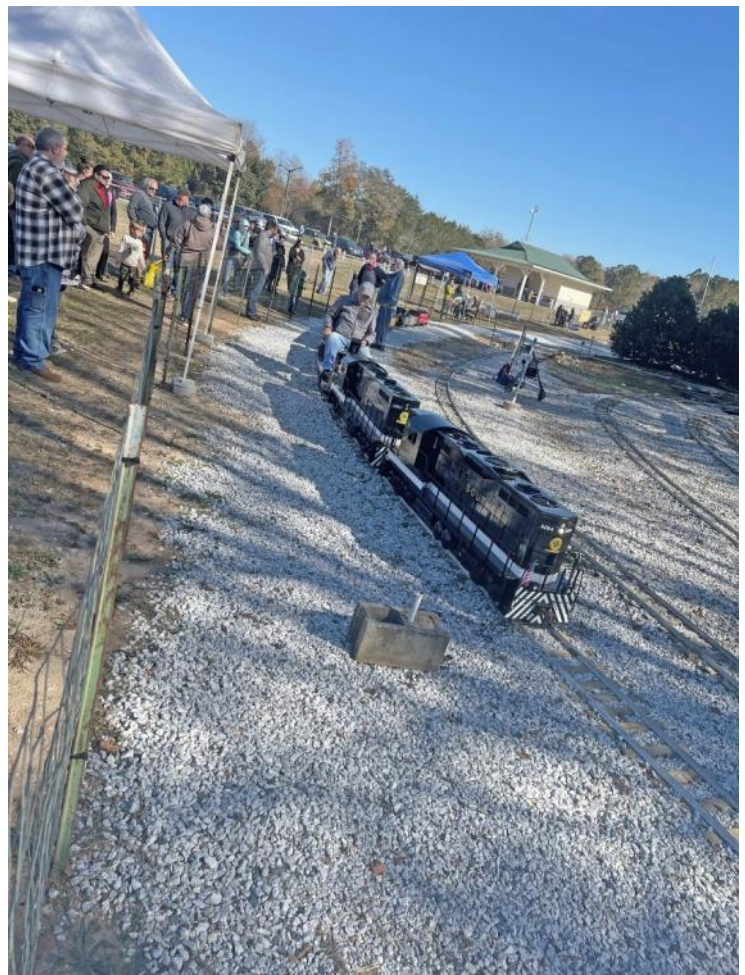
Careful communications between engineers and dispatchers ensured every one stayed safe while having fun riding the rails.



Some of the units were Coal or propane fired steam engines, with the heat from the firebox boiling water in the boilers to produce the steam to move the pistons, and thereby the wheels. Others were battery operated electrics, using two automobile batteries wired in series to produce 24 volts of motive power. Even others used gasoline 4 cycle engines to power a hydraulic drive system that moved the engine and passenger cars down the lines.

You can see the large number of tourists that came out to ride on this blustery Saturday. Many insisted on waiting for an opportunity to catch the "next steamer" to come down the line.

This Norfolk Southern double header is an interesting model of M/U, the designation of one engineer operating multiple units from one control. There is only one motor in the back engine, but the hydraulic drive system is piped through both units so that there are 16 drivers giving traction to this beast and its load. I wonder if they have tested how many car loads it could pull?





There was even an elevated oval of double track with sidings in G Scale for those who wanted to run their smaller live steam or Battery operated trains at the horse park..... Perhaps we should call it "The Iron Horse Park"?



## That Is A Wrap On The 2021 Train Ride Season

*By North Georgia Live Steamers on Nov 21, 2021 07:00 am*

A big thank you to everyone who came out and visited with us on our last ride day of the 2021 season. The day was full of so many special visitors including a large group from the **Georgia Garden Railroad Society**. A special thanks to each of the North Georgia Live Steamers members who volunteered and ran trains throughout the day. We look forward to seeing everyone next year as the railroad comes alive again in the spring of 2022. In the meantime, don't forget to visit our website and social media pages for the latest on what's going on during the offseason.

## Gandy Dancers

**Highlighting Members and their work**

### Theme for the Month - What's on Your Christmas Wish List?:

Besides Peace on Earth, What is on Your Christmas Wish List? Hoping for that new Engine, some Sound modules, or a Dilapidated old MOW? Whatcha want?



Been saving my pennies. I want a USAT FEF-3 in greyhound painting, with 5 - 6 matching heavyweight cars. - David Bergmann



Harvey ALPHA HW110TC - 36P & 52P. - Lowell Dietz

<https://www.harveywoodworking.com/products/alpha-hw110lc-36p-10-cabinet-table-saw>



### ALPHA HW110LC-36P

10" 2HP Cabinet Table Saw With Cast Iron Table



I am really liking the Split Jaw Draw Bridge. Especially since I was told that a Pratt Truss version might just be possible after all. - Emil Decker



**Who was the first President to ride on a train?**

**Answer on page 17.**

# Azalea Sprinter

## Ribbon Cutting

In Partnership with the City of Willacoochee; you are cordially invited to attend our Downtown Willacoochee Passenger Train ribbon cutting.

**Event will take place: 8:00AM Saturday December 4, 2021**

**165 Fleetwood Avenue Willacoochee, Georgia**

Tour of the train will be from 7:30AM to 8:30AM –

***Sold Out Train #79 will Depart Willacoochee at 9:00AM for Valdosta***  
*\* First Passenger train to Depart Willacoochee since April 30, 1971 \**

[www.AzaleaSprinter.com](http://www.AzaleaSprinter.com)



## Highballing down the Track

2022

# NATIONAL GARDEN

JUNE 20-25 2022 ▶ DENVER CO

COME'ON ABOARD! ◀



# RAILWAY CONVENTION

DENVER GARDEN RAILWAY SOCIETY

▶ REGISTERING SOON!

## REGISTRATION IS ONLY WEEKS AWAY!

REGISTER ONLINE OR PRINT FOR REGISTRATION BY MAIL

SAVE THE DATE

<i>Individual Registration</i>	\$75 by March 31, 2022	\$100 thereafter
<i>Family Registration</i>	\$125 by March 31, 2022	\$150 thereafter

VISIT [NGRC2022.ORG](https://www.ngrc2022.org)

### REGISTRATION INCLUDES ▶

- ♦ Visit 40 + Layouts Scheduled for the Convention
- ♦ Access to Vendor Hall, Welcome Reception, Clinics and Convention Store
- ♦ Participation in the Convention Model Contest and Youth Model Contest
- ♦ Convention Bag, Program Book, and Commemorative Convention Pin

### ADDITIONAL OPTIONS ▶

- ♦ Four Pre-Convention Bus Tours – Transportation, Admission, and Lunch
- ♦ Post-Convention Bus Tour – Includes Transportation and Admission
- ♦ Banquet, Ice cream Social and BBQ at the Colorado Railroad Museum
- ♦ Bus Transportation to Layout Tours and BBQ

**PLUS ▶** Limited-edition Convention Car – Logo-branded Rio Grande Caboose available for \$98

A new issue of **Garden Railroading News (GR News)** digital magazine (#5, Sept/Oct 2021) went online.

You can access it via this link <https://dl.orangedox.com/GRNews2021-5-Sept-Oct2021>

Or you can access it via the GR News website at

<https://www.grnews.org> where you can also: Access prior editions

Check out bonus content

Click a link to a readership survey

Please do help the small team of garden railroad volunteers who produce GR News by completing the brief 6 question readership survey.

## What honks and is silver all over?

The galloping geese! Visit them at the Colorado Railroad Museum, FREE with your convention badge!



The 2022 National Garden Railway

Convention Registration is now open. Registration form available at the site or via this link:

[https://dfa523be-bf1d-4941-a215-a05aca394771.filesusr.com/ugd/006123\\_d64cc1da04054cb297e36fcfddb07b00.pdf](https://dfa523be-bf1d-4941-a215-a05aca394771.filesusr.com/ugd/006123_d64cc1da04054cb297e36fcfddb07b00.pdf)

## The History of the Christmas Train

by Russ Bundy



Like always, this year many of us will have a train running under the Christmas tree. For most of us it's an excuse to bring our trains inside. At least for a little while. During the Holidays we will enjoy spending time gazing at the tree, fascinated by the various decorations and twinkling lights, and of course, the presents. But many find real joy in watching the train circle round and round the tree. Have you ever wondered how trains around the tree became a Christmas tradition?

An exact history of the Christmas train is not certain. It's hard to find a single source to define this wonderful addition. There is one speculation that many agree could be the source.

At the turn of the century, the year 1900 is often noted as the beginning of our story. The Lionel Corporation was founded late in that year by J. Lionel Cowmen and H.C. Grant. Their first trains were built for corporations as show displays in retail stores. The "sets" used brass tracks and were powered by a battery. The motors were sourced from electric fans. These displays were not available to the public.

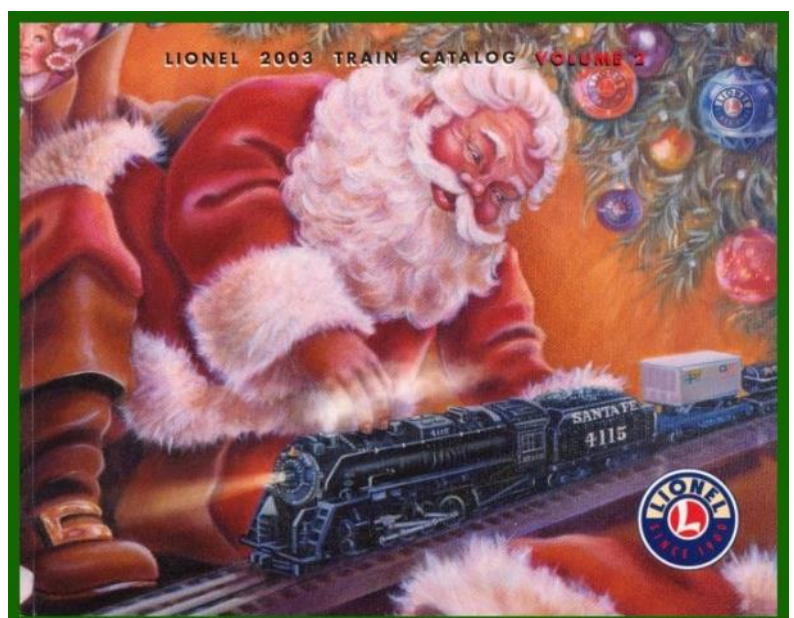
The public, however, was captivated by this new toy and there were a lot of inquiries about buying the displays. That year Lionel sold 12 sets and the model railroad hobby was born.

During that time period, trains were more familiar than cars which made toy train sets perfect (and desired) for Christmas gifts. These new toys brought back fond memories of previous Christmases. At that time to travel long distances to see friends or family, or just to get home for the holidays, people took the train. The railroad was the main source of transportation for both people and packages. Now it was possible for everyone to relive those enjoyable memories in their own homes during this most wonderful time of the year.

Over the years the simple circles of track under the tree began to grow as people added to their railroad empires. Each year, additions were made to the collections. Over time the Christmas train layouts grew with the additions of building, figures, and other personal touches. This trend continues today with entire Christmas Villages being built under the tree.

The Christmas train idea that started our hobby and helped it grow is also responsible for keeping it alive today. Currently we are experiencing an increase in popularity that is helped along to a degree by the entertainment industry. The Polar Express (2004) is a computer based-animated musical based on a book written in 1985. (Authors comment: the book is much better than the movie for young children.) Several other shows such as Thomas and Harry Potter have helped introduce an entire generation to the joys of trains.

This season there will be many opportunities to enjoy your train around the tree. In addition, consider experiencing one (or several) of the train adventures offered by the operating railroads. Sites like [Thepioneerwoman.com](http://Thepioneerwoman.com) (14 Best Christmas Train Rides) (2020) or [Travelchannel.com](http://Travelchannel.com) (10 Best Christmas Trains Across the Country) are good places to start. And don't forget to ask Santa for that special addition to your own Christmas RR.



## The Rip Track

**Need Repairs? Supplies?  
Buy Good Stuff from  
our Members**

Members with Garden, Train, or other related items to sell (new or used) can submit their items for inclusion in "The Rip Track". Send information to the editor for the next issue. Items will run for a single issue, unless the editor is notified to repeat the item. (Quality photos appreciated) Members with related business advertising may also submit ads. These will run continuously until policies change or notice is given. Non-member publishing by arrangement.  
(Contact Editor for details.)



If you need signage for your railroad ... something like a store sign or billboard, consider wood or plastic engraving. I do custom work at a reasonable price.



Lettering, images, You imagine it, and I can probably laser carve it.



## Your shirt is dirty! Get a new one !

### Engineer's Wish List

**Sally Bando | 404.550.4816 | sbandogeorgia@comcast.net**

Machine embroidery designs & themes on shirts and gifts. Prices upon request. Company and group projects welcome.

Embroidery Design and Gifts  
Georgia Garden Railway Society  
Club Shirts  
Each Shirt will have the club logo on included in the price.



Contact Sally for other designs

Men's	S	M	L	XL	2XL	3XL	Price
Grey Pocket t-shirt							\$10.00
Carbon or Burgundy Polo							\$20.00
Carbon or Burgundy Pocket Polo							\$20.00
Long Sleeve Denim							\$22.00
Short Sleeve Denim							\$22.00
Name on Men's Shirt		(Specify Name)					\$5.00
Ladies	XS	S	M	L	XL	2XL	Price
Grey T-shirt							\$10.00
Carbon or Burgundy Polo							\$20.00
Long Sleeve Denim							\$22.00
Name on Ladies shirt		(Specify Name)					\$5.00

The Bando's recently purchased a stone marker for their Grand Western Mining Co. Mountain railroading calls for a mountain shaped stone.

Custom carved stonework for your RR., Garden stones, Pet Memorials, etc. Deep etching ensures years of enjoyment. Let everyone who visits your railway know you are a proud Georgia Garden Railway Society Member.

[sticksnstones@weegr.com](mailto:sticksnstones@weegr.com)



Great  
Place  
To  
Work®

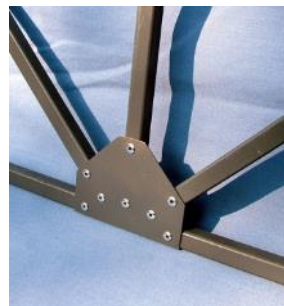
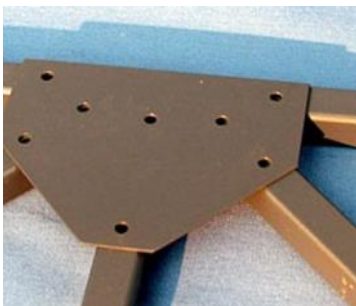
Certified  
DEC 2020-DEC 2021  
USA

# TRAINZ

For December 1st through the 5th we'll be running our Winter Wonders promotion, where all purchases earn four times the points. Good for those who have a free loyalty account, and even better for those with a premium membership since the multiplier works out even better.

™ We also have our Black Friday-Cyber Monday promotion coming up, which will be \$25 off orders of \$100 or more sitewide. Certainly worth mentioning to your friends. I've also extended the Georgia Garden Railroading Society's discount, GGRS10off, to run through to 12/31/2021. Good for \$10 off your next purchase. \*\*A note though, that discount codes don't stack on our website, so it's worth checking to see which works best for the individual.

Remember Erector Sets? Want to build your own Bridge? Check out <http://plushmodelsupply.homestead.com/index.html>

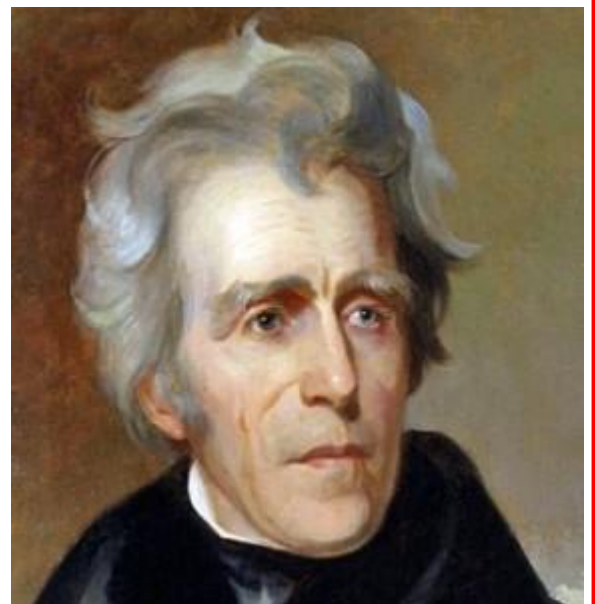


## The first President to ride a train was Andrew Jackson

June 06, 1833 President Andrew Jackson boarded the Iron Horse at Ellicott's Mills, Maryland. President Jackson boarded a Baltimore & Ohio Railroad train for a pleasure trip to Baltimore. Jackson, who had never been on a train before, was the first president to take a ride on an "Iron Horse."

The steam locomotive was first pioneered in England at the beginning of the 19th century by Richard Trevithick and George Stephenson. The Baltimore & Ohio Railroad began operation in 1828 with Horse - drawn cars, but after the successful run of the Tom Thumb, a steam train that nearly outraced a horse in a public demonstration in 1830, steam power was added.

By 1831, the Baltimore & Ohio Railroad had completed a line from Baltimore to Frederick, Maryland. Two years later, Andrew Jackson gave railroad travel its presidential christening.





## Train Installations, LLC

Woodstock, GA 30188

770-597-0038

[dave@traininstallations.com](mailto:dave@traininstallations.com)

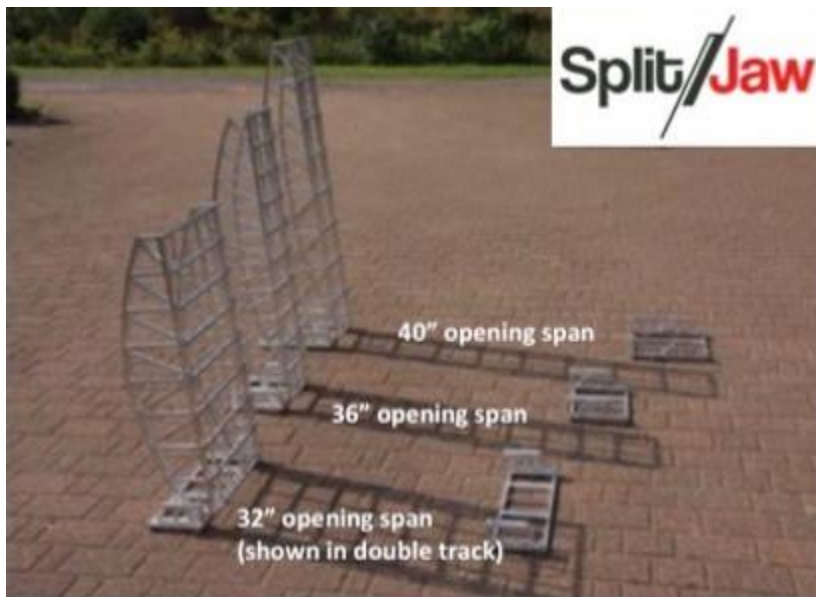
Check out our online store and updated website at  
[www.traininstallations.com](http://www.traininstallations.com)

Think about other ways or things we can help you with while we are stuck at home over the next few weeks including.

- Layout planning and CAD drawings
- Custom bridges
- Overhead RR systems
- Model kit assembly
- Train storage shelving

Now is a better time than ever to distract yourself with the hobby of model railroading! Let us know how we can help.

**Thanks - Dave 770-597-0038**



We are pleased to announce our DESIGN LINE DRAWBRIDGES now have 3 options for opening sections. Need space for lawnmowers, lawn tractors or mobility aids? We now open up to 40". Single Track or Double Track versions.

<https://www.railclamp.com/>

***What's this I hear about coming soon  
 Motorized Turntables???***

## 2022 Election of Executive Board Members

In accordance with Section 3 (Election Committee) of Article VII (Elections) of the GGRS Bylaws, the Election Committee is required to report a slate of nominees for the election of Executive Board members by means of the newsletter at least 30 days prior to the annual scheduled election (January 8, 2022). The slate of nominees for that purpose is as follows:

President – Juliet Foster

Secretary – Pam Williamson

Treasurer – Dennis Bass

Members-at-Large (4) – James Bando, Emil Decker, John Lank, Ginny Manning

Additional nominations may be made from the floor (Section 4: Voting) at the Annual Business Meeting on January 8 provided the Election Committee Chairman (Terry Manning – [temanning@aol.com](mailto:temanning@aol.com)) has been notified of the proposed nomination at least 14 days (December 25) prior to the scheduled election (to allow for printed ballots). For any contested positions, each of the candidates shall receive up to 5 minutes to speak for themselves on their qualifications or to designate another member to speak on their behalf prior to the voting.

Submitted by the Election Committee comprised of Terry Manning, Bob Avery, and Marge Lees.



## Yard Hostler

Hard to believe, but the year is drawing to an end. Good train shows that produced new members, some great get-togethers, and exciting times ahead.

Don't forget that you make this newsletter possible through your Contributions: written, photographically, and through hosting.

*For the Jan. Gandy Dancers Section, submit your favorite train related Christmas Ornament. Since you probably just started unpacking and hanging them on your Christmas tree.....*

The proposed budget for 2022 is posted in Appendix A.

The fact that this is a negative budget was recognized, but GGRS is a Non-Profit Organization and there are sufficient funds to operate in 2022, therefore, the budget was unanimously approved.

Emil Decker, Editor, GGRS Gazette  
480 Grizzle Rd., Dawsonville, GA 30534

[eldecker@windstream.net](mailto:eldecker@windstream.net)

## Polar Express Returns to the Chatsworth Depot - Dec. 4

The Chatsworth Depot, a Whitfield-Murray Historical Society property, and the Murray County Library will once again team up to present The Polar Express on Saturday, December 4. The depot will be filled with operating model trains, some in Christmas decor, and a special train will take riders on a short trip to visit Santa Clause at the City Park. Local retired educators will bring the story of The Polar Express to life with dramatic readings of the beloved children's classic book. Refreshments will be served inside the depot. The Chatsworth Elementary School Chorus will kick off the afternoon with a concert starting at 12:30. Train rides, operating model trains, story reading, and refreshments will follow. The event will last until approximately 4:30. Admission is free for children 10 years old and under, with a suggested donation of \$3.00 for all others.





