



GGRS Gazette

January, 2022

Official Newsletter of the Georgia Garden Railway Society

President's Message



Dear Friends,

I have enjoyed our journeys and adventures this year so much that I can't wait for 2022. Thank you for showing me the true sights and sounds of friendship. All aboard for our next adventures!

Happy New Year fellow ferroequinologists !

Juliet Foster

In This Edition

<i>President's Message</i>	1
<i>Annual Meeting 2022</i>	1
<i>Christmas Gift Exchange</i>	2
<i>Track Warrants</i>	3
<i>60th Atlanta Model Train Show</i>	4
<i>At the Depot</i>	5
<i>Highballing Down the Track</i>	6
<i>Shop Foreman</i>	7
<i>Gandy Dancers</i>	9
<i>GR News</i>	10
<i>1:1 Train Rides</i>	10
<i>Rip Track</i>	13
<i>Yard Hostler</i>	17

Annual 2022 Meeting

Annual Business Meeting & Christmas Luncheon
January 8, 2022
12 Noon – 2:30 P.M.
Provino's Italian Restaurant
440 Ernest W. Barrett Parkway Northwest
Kennesaw, GA 30144

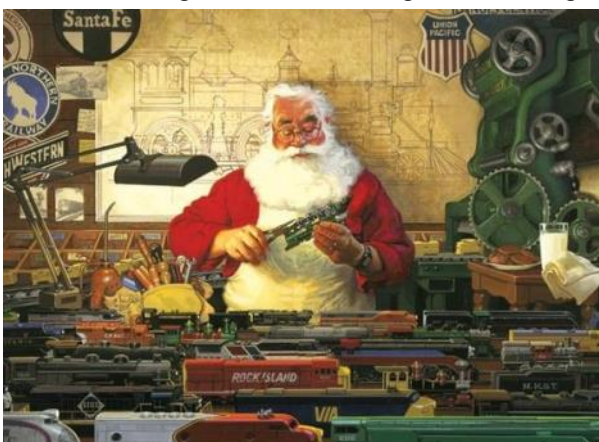
Our Annual Business Meeting & Christmas Luncheon will be a little different in several ways this year. First, due to the Golden Corral in Alpharetta being closed, the luncheon will be held at Provino's Italian Restaurant. Second, we need to provide a head count to Provino's, hence the Sign-Up Genius.

<https://www.signupgenius.com/go/30e0949a8af2aa6fa7-annual>

Lastly, the cost per person is \$25 which includes choice of five Italian entrees, house salad, garlic rolls, soft drinks or tea, tax and tip. GGRS will collect your payment and then make one payment for the group to Provino's. GGRS has no way to collect your payment via credit or debit card, so come prepared to present cash or check to the Treasurer. Alcoholic beverages will be available and will be the responsibility of the purchaser.

One constant for our luncheon is the "White Elephant/Dirty Santa" a good old - fashioned game of scheming and stealing! All those interested in playing should bring a wrapped train related gift (train car, building, yard art...) for each individual interested in joining the game.

Please register on the Sign-up Genius by December 30th, if you will be attending. We hope to see you at the Annual Business Meeting & Christmas Luncheon for a great meal and a fun game of stealing!



Your GGRS Board

NOTE: *Provino's does have a gluten free entrée option. We will have to include any special requests when we turn in our headcount, so please indicate in the comment section when replying or text or call Carolyn Lank at 770-653-8109 for special requests.*

Christmas Gift Exchange

As we prepare for the Annual Holiday Festivities, one that can be a lot of fun is the gift exchange. Old hands at this will know what I am talking about. Others may not know, and we want everyone who is interested, joining in on the fun. When I volunteered to play "Cinder Claus", it seemed those in the conversation didn't really know how it was run, or even what to call it. It goes by several names.

- Chinese Christmas Exchange** Too politically charged for some, but that was it's name in the past.
- White Elephant Gift Exchange** Got something you don't want? Wrap it and laugh when someone else gets your trash, er.. I mean "quality" unwanted item. (In Siam, white elephants were highly prized).
- Gag Gift Exchange** This version usually calls for funny, gag gifts. Tastes vary by from whom the gift comes.
- Yankee Swap** This originally was a reference to the swapping of prisoners of war during the American Civil War. Some claim that generals made a game out of these swaps, and they even assigned different values to each prisoner; kind of like a brute barter system.
- Lets mess with John** Last year the game earned a new name, when everyone started stealing John's freshly opened gift. It became amusing to see when he would end his mass-opening-of-presents, (he kept going back to The pile of unopened gifts), by stealing one of the previously opened.... He never did.
- Dirty Santa** While Yankee Swap is the name from the New England area, down South it is called Dirty Santa. It is called "dirty" because the game involves "stealing" more desirable gifts while scheming to avoid the gag gifts that nobody wants.

Whatever you want to call it, we are going to play. Here are the rules:

- ⊗ **Bring a gift.** Since it is a Railroad Society that we belong to, one would expect the gift to be RR related.....In our case, RR equipment, building, accessory, Garden, yard, tool, resources, you can think of million things. Pick something you have and decided you don't want or need. Or buy something if you want to keep everything you currently have stocked away in your basement.
- ⊗ You can bring one for each member of the family who wishes to play, or one for the whole family. (Your second decision.)
- ⊗ **Wrap it.**
- ⊗ **Bring it.** You will exchange your gift for a ticket, which will be used to determine the order of precedence for play later. See Cinder Claus for the gift pile.
- ⊗ Once the game begins, Cinder Claus, that's me, will randomly draw a ticket. The matching holder of the ticket will be the first to play.
- ⊗ You will look at all the nice lovely wrapped gifts, and pick one. Then unwrap it for all to behold and ooh and ah over.
- ⊗ Now the fun begins. The second ticket drawn has an option. Pick a new, beautifully wrapped gift, Or steal the unwrapped gift opened by previous participant.
- ⊗ If you unwrap a new gift, we move to the third ticket. If you steal, then the person from whom you stole gets to unwrap a new one. Or steal if there is an available un-stolen gift out there.
- ⊗ **Stealing rule:** Depending on game version, a gift may be stolen a set number or unlimited times. This could make for a very long night. **WE LIMIT STEALING OF A GIFT TO TWO (2) TIMES.** Once a gift is opened, then stolen twice, it goes out of play. Cinder Claus will be watching and tagging the stolen gifts. Yellow card - stolen once. Red card - no more stealing.
- ⊗ A player may have their gift stolen, open a new one, then have it stolen, and on and on.
- ⊗ As the game progresses, a gift might be opened, NOT stolen for a couple of turns, then gets stolen later in the game, so even if you select early, your gift may get stolen later in the game. Fear not, you then get to choose all over again.
- ⊗ The last ticket signals nearing the end of the game.
- ⊗ Once all tickets have been pulled, there should be no gifts left to open except the last one. If the last ticket holder opens the last gift, ok. If they decide to steal from available opened gifts, any of the victims can opt to steal or open the last gift.
- ⊗ Once the last gift is opened, one would think the stealing is done. But Noooooooo!
- ⊗ Now, the person who had the 1st ticket pulled, finally gets to steal any gift un-stolen "2nd time gift" to end the game.



Simple rules; easy to play; and you go home with a new gift for Christmas. Join us, won't you?

Track Warrants

Event	Location	Date	Status
January Annual Business Meeting & Luncheon	Provino's Restaurant 440 Ernest W Barrett Pkwy NW #1 Kennesaw, GA	Jan 8, 2022	\$25 value RR Steal My Gift Exchange Game
60th Atlanta Model Train Show	Gas South Duluth, GA	Jan 15, 2022	Booth
Trains, Trains, Trains	Southern Museum of Civil War and Locomotive History Kennesaw, GA	Jan 29 - 30, 2022	In Planning Stage
2022 Model Train Expo	Chatsworth Depot	Apr 09, 2022	In Planning Stage
GGRS Apr 2022 Meeting	Dennis and Ellen Bass 1972 Lansbury Court, Snellville, GA	Apr ? 2022	In Planning Stage
GGRS May Meeting Southside Atlanta Consortium 2022	Multiple: At least 4 ! Peachtree City and outlying area.	May 2022	In Planning Stage



SOUTHEASTERN RAILWAY MUSEUM

NEED TO ADD A LITTLE IRON TO YOUR DIET? WE ARE LOOKING FOR VOLUNTEERS!

No matter what your interest or skill set, the Southeastern Railway Museum offers fulfilling opportunities to get involved. Our dedicated volunteers bring transportation history to life, helping visitors appreciate and understand the cultural, technical, and economic impact of transportation in our region – and they have fun doing it! Museum volunteers come from a wide range of backgrounds, range in age from high school students to retirees and include both men and women.

What do our volunteers do? Here are just a few areas: Train crews, Equipment Restorations, Gift Shop, Birthday Party Hosts, Exhibit Construction, Maintenance, and Repair, Landscaping, Tours and Computer Support.

INTERESTED IN JOINING THE FUN?

To learn more, go to <http://www.train-museum.org> then click on the Support Us button, then Volunteer.



The Georgia Garden Railway Society will be setting up a table to promote, encourage, and stimulate interest in Garden Railroading at the 60th Atlanta Model Train Show.

60th Atlanta Model Train Show
January 15, 2021, 9:00 A.M. to 5:00 P.M.
Gas South Arena, Duluth, GA
(Formerly known as the Infinite Energy Forum)

If you would like to share your love of Garden Railroading to recruit new club members, please sign up to staff the GGRS Information Booth on January 15th.

Those signed up to volunteer will receive free admission to the 60th Atlanta Model Train Show.

60th Atlanta Model Train Show

GAS SOUTH CONVENTION CENTER
 Formerly the Infinite Energy Center

6400 Sugarloaf Parkway • Duluth, Georgia 30097

Saturday, January 15, 2022
 9:00 AM to 5:00 PM

Over 300 Tables of Model Trains and Railroad Collectibles For Sale
 Atlanta's Oldest and Largest Model Train and Railroadiana Show

For Dealer Contracts and Show Information
 Contact:
 Charlie Miller
 3106 N. Rochester Street
 Arlington, VA 22213
 Phone: 703-536-2954
 Fax: 703-241-7027
 e-mail: rrshows@aol.com

Tickets available at:
 Eventbrite.com

Large Operating Layouts
 www.gserr.com

Follow us on
 facebook.

Present
 This Card
 For \$1.00 Off
 One Admission

Please click on the link below to view the online sign-up sheet.

If you have any questions, contact Roy Williamson at 770-891-9462.

<https://www.signupgenius.com/go/30e0949a8af2aa6fa7-60th>

At The Depot**Tellus Museum “Festival of Trains”****by Russ Bundy**

The Tellus Museum (tellusmuseum.org) held their first “annual” Festival of Trains December 11-12th. This year, in addition to the regular visit from Santa, the annual event included displays from several of the local model train organizations. Coordinated through the NMRA Piedmont Division, there were setups in N”, “HO”, and large scale. Additionally, the LEGO Modelers brought two of their fantastic layouts.

Saturday the theme was “PJ Parade” which encouraged everyone to come in their pajamas. The turnout was spectacular with more than 1700 in attendance to see Santa and watch the trains. Many visitors, including adults, followed the PJ theme and everyone had a great time. Sunday was a “normal” day at the museum, with approximately 500 attending.

The Tellus Museum is located in Cartersville, just off I-75 at exit 293. The museum is open 10-5 every day except major holidays.

Children, Santa, and train layouts. A good time was had by all. The Museum made it clear that this arrangement was a great addition and have made plans for the “Festival of Trains” to become an annual event.



Highballing down the Track

2022

NATIONAL GARDEN

JUNE 20-25 2022 ▶ DENVER CO

COME'ON ABOARD! ◀



RAILWAY CONVENTION

DENVER GARDEN RAILWAY SOCIETY

▶ REGISTERING SOON!

REGISTRATION IS ONLY WEEKS AWAY!

REGISTER ONLINE OR PRINT FOR REGISTRATION BY MAIL

SAVE THE DATE

<i>Individual Registration</i>	\$75 by March 31, 2022	\$100 thereafter
<i>Family Registration</i>	\$125 by March 31, 2022	\$150 thereafter

VISIT NGRC2022.ORG

REGISTRATION INCLUDES ▶

- ♦ Visit 40 + Layouts Scheduled for the Convention
- ♦ Access to Vendor Hall, Welcome Reception, Clinics and Convention Store
- ♦ Participation in the Convention Model Contest and Youth Model Contest
- ♦ Convention Bag, Program Book, and Commemorative Convention Pin

ADDITIONAL OPTIONS ▶

- ♦ Four Pre-Convention Bus Tours – Transportation, Admission, and Lunch
- ♦ Post-Convention Bus Tour – Includes Transportation and Admission
- ♦ Banquet, Ice cream Social and BBQ at the Colorado Railroad Museum
- ♦ Bus Transportation to Layout Tours and BBQ

PLUS ▶ Limited-edition Conventian Car – Logo-branded Rio Grande Caboose available for \$98

A new issue of **Garden Railroading News** (GR News) digital magazine (#5, Sept/Oct 2021) went online.

You can access it via this link <https://dl.orangedox.com/GRNews2021-5-Sept-Oct2021>

Or you can access it via the GR News website at

<https://www.grnews.org> where you can also: Access prior editions

Check out bonus content

Click a link to a readership survey

Please do help the small team of garden railroad volunteers who produce GR News by completing the brief 6 question readership survey.

What honks and is silver all over?

The galloping geese! Visit them at the Colorado Railroad Museum, FREE with your convention badge!



The 2022 National Garden Railway

Convention Registration is now open. Registration form available at the site or via this link:

https://dfa523be-bf1d-4941-a215-a05aca394771.filesusr.com/ugd/006123_d64cc1da04054cb297e36fcfddb07b00.pdf

Shop Foreman Kitbashing – Introduction by Russ Bundy

Creating something unique for your railroad is very rewarding. Each of us looks at our empire and dreams of something that would make it just a little better, a little different. One way to give your set something different, something that no one else has, is by making that missing piece. But what happens when none of the manufactures makes what you want? What if that “thing” you’re looking for never existed (but should have)? Or you just want something no one else has? A “One Off”. You could always make it. But building something from scratch might not be the easiest, or best approach.

There are many ways to make something unique. One straight forward way is to “weather” an existing model. Weathering is a process where you distress a new looking piece to make it look older/used. Basically, streak a building with paint or any of the available products made for this purpose and something new can look like its been around for years. “Detailing” is another way to make an item look unique. Something as simple as adding figures to the engine, or painting areas to better represent what the prototype unit actually looked like, will set it apart from “what everyone else has.” But what if that’s just not enough?

Kitbashing, as discussed here, is the process of modifying an existing item into something different. Although the technique is usually associated with structures, it is limited only by your imagination. One example: what if you want (need?) a two-story building but can only find single story units in that style? By kitbashing two kits into one structure, you can make the building you’ve always wanted. This is the main advantage of kitbashing versus scratch building something. You can certainly purchase styrene sheets and cut out each piece, but by using commercially available kits, you would save a lot of effort and very likely have something with greater detail.



Something that never was, but might have been.



One common use of kitbashing is transforming something from another place or time into your place and time. What if you like a particular locomotive design, but the railroad you model never ran that unit? The example here would be when L&N was absorbed by CSX. You might like having an U25B in your fleet, but although CSX had some U25's when they combined with L&N no one ever made a CSX U25B. Aristorcraft did make U25'S so, with a few changes and a little imagination, add a few markings and, presto, you have something unique for your set.

Combining parts from 2 kits to make an engine unique to your

Shop Foreman Kitbashing – Cont.

The same idea applies if there is something you think would look good, but never existed. (Full disclosure: I do not consider myself a “rivet counter” by any stretch.) I came across a deal for a US Army Bobber caboose that was too good to pass up. I didn’t have any use for it as it was, so I kit bashed it onto an existing flatcar, added some fencing to the front end and now have a mobile lite repair car for my Army consist. Did it every exist? Probably not. But it could have. For me, the attraction is that it will be the only one you will ever see and there is not another like it. Which is probably good.

Kit bashing is a perfect way to individualize your layout. It can be as simple as changing a paint scheme, adding some graphics, to completely remaking an existing item into something that never existed. Personally, I like having things that you won’t see anywhere else. Even if they’re just slight touches that most people won’t notice, that one time someone comments on it, makes it all worth it. But most of all, it’s very rewarding to see something that you created. And remember to have fun.

My transformed bobber. Still in work.



Something that never was, but might have been.

Christmas Candy in the Stocking? Was it Toblerone? Is this even a real thing or somebody’s Photoshopping?

This photo was taken at Bern, Switzerland at the Toblerone factory. They use this train to transport their product with perfect stacking. Legend says the smart packing allows a perfectly perfect energy barrier that keeps chocolate at optimum temperature without damaging the physical shape of the chocolate. Trust me I know everything about chocolate trains. More than everyone here. True or false?



Answer on page 15.

Gandy Dancers

Highlighting Members and their work

Theme for the Month - What's on Your Christmas tree?:

This month we asked all the folks to share their favorite Christmas ornament hanging on their tree. Of course, if there is a train running around the tree, we want to see that too!



Here's mine! - Jesse Murrah

Our tree, train, and ornament - Ted Yarbrough





My favorite rain ornament - Ellen Bass



Most recent Christmas purchase is an Engineer Nutcracker - Emil Decker



Yard Art - R J DeBerg

A gift from my Sister. My hobby and my favorite Basketball team – Roy Williamson






My favorite train ornament
- Russ Bundy



Champagne Express - Barbara Jones

ALL ABOARD! THE 2022 **PIEDMONT DIVISION**




MODEL TRAIN SHOW
March 12 & 13
Saturday 10-5, Sunday 10-4

The Clarence Brown Conference Center
 5450 GA Hwy 20 – Cartersville, Georgia
 Easy access from Hwy 41 and 75.
 A Courtyard by Marriott hotel is adjacent to the Conference Center.

**Operating Model Railroads to Enjoy,
 150 Tables of Model Train Dealers,
 "White Elephant" tables**

**Admission is just \$10 per Person
 Kids 9 and Under are Free!
 FREE PARKING**

Masks & Social Distancing are Encouraged



Sponsored by the Piedmont Division
 of the National Model Railroad Association
www.themodeltrainshow.com
www.piedmont-div.org

A new issue of *Garden Railroading News* (GR News) digital magazine (#6, Nov/Dec 2021) went online on December 8.

You can access it via the GRNews website at <https://www.grnews.org> where you can also access prior editions. All editions are FREE.

The GR News Team wishes us all a Happy & Peaceful Holiday Season.

Mick Spilsbury
GRNews Marketing & Distribution

[GRNews.org](https://www.grnews.org)

[GRNews on Facebook](#)

[GR News on Instagram](#)



1:1 Train Ride ?

2022 steam locomotive list

Jim Wrinn, Trains Magazine Editor, offers up the complete list of operating steam in the U.S. as of the close of 2021. Wanna go for a ride this coming year? Here's the 2022 steam locomotive list. 2021 may be the best so far in the 21st century to be a steam locomotive enthusiast, but next year is looking good too! Check out your options.



https://www.trains.com/trn/railroads/locomotives/rosters/2022-steam-locomotive-list/?utm_source=acs&utm_medium=email&utm_email=rsbundy%40hotmail.com&utm_campaign=News0_TRN_211207_000000&eid=rsbundy%40hotmail.com

The Rip Track

**Need Repairs? Supplies?
Buy Good Stuff from
our Members**

Members with Garden, Train, or other related items to sell (new or used) can submit their items for inclusion in "The Rip Track". Send information to the editor for the next issue. Items will run for a single issue, unless the editor is notified to repeat the item. (Quality photos appreciated) Members with related business advertising may also submit ads. These will run continuously until policies change or notice is given. Non-member publishing by arrangement. (Contact Editor for details.)



If you need signage for your railroad ... something like a store sign or billboard, consider wood or plastic engraving. I do custom work at a reasonable price.



Lettering, images, You imagine it, and I can probably laser carve it.



Your shirt is dirty! Get a new one !

Engineer's Wish List

Sally Bando | 404.550.4816 | sbandogeorgia@comcast.net

Machine embroidery designs & themes on shirts and gifts. Prices upon request. Company and group projects welcome.

Embroidery Design and Gifts
Georgia Garden Railway Society
Club Shirts
Each Shirt will have the club logo on included in the price.



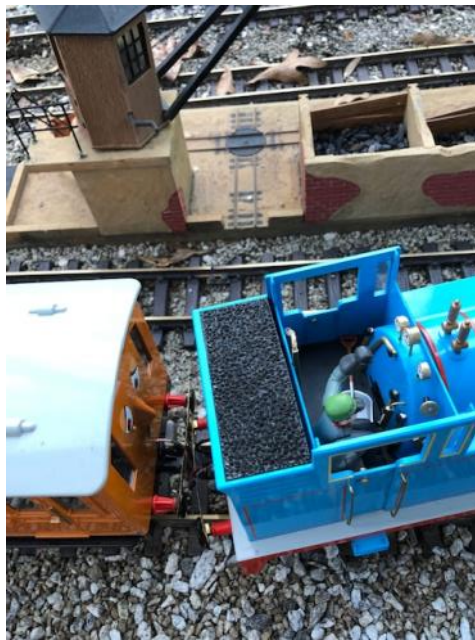
Contact Sally for other designs

Men's	S	M	L	XL	2XL	3XL	Price
Grey Pocket t-shirt							\$10.00
Carbon or Burgundy Polo							\$20.00
Carbon or Burgundy Pocket Polo							\$20.00
Long Sleeve Denim							\$22.00
Short Sleeve Denim							\$22.00
Name on Men's Shirt		(Specify Name)					\$5.00
Ladies	XS	S	M	L	XL	2XL	Price
Grey T-shirt							\$10.00
Carbon or Burgundy Polo							\$20.00
Long Sleeve Denim							\$22.00
Name on Ladies shirt		(Specify Name)					\$5.00

The Bando's recently purchased a stone marker for their Grand Western Mining Co. Mountain railroading calls for a mountain shaped stone.

Custom carved stonework for your RR., Garden stones, Pet Memorials, etc. Deep etching ensures years of enjoyment. Let everyone who visits your railway know you are a proud Georgia Garden Railway Society Member.

sticksnstones@weegr.com



Dennis Lynch has some equipment he would like to offer for sale. If you are interested, contact Dennis at: [770-760-8419](tel:770-760-8419) or lynch.dm@icloud.com

Here's some photos of the LGB track cleaning locomotive and Thomas the Tank Engine. I'm asking \$250 each. The LGB one has issues. It goes forward and backwards but won't move when track cleaning motor is running.

More information on Thomas. It is just the train and box, no power pack or track. Thomas runs fine on level track. My track is too rough for it. Dennis Lynch.

Maybe it's a good Christmas gift just waiting to happen. Contact Dennis. [Editor]



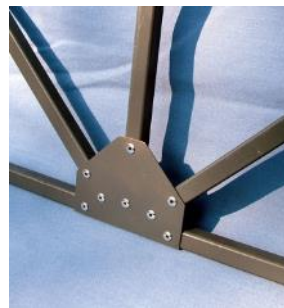
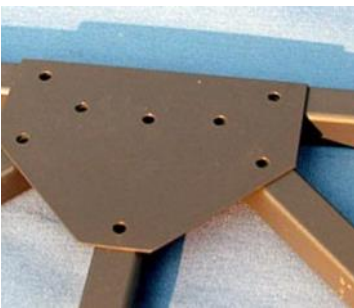


TRAINZ

For December 1st through the 5th we'll be running our Winter Wonders promotion, where all purchases earn four times the points. Good for those who have a free loyalty account, and even better for those with a premium membership since the multiplier works out even better.

™ We also have our Black Friday-Cyber Monday promotion coming up, which will be \$25 off orders of \$100 or more sitewide. Certainly worth mentioning to your friends. I've also extended the Georgia Garden Railroading Society's discount, GGRS10off, to run through to 12/31/2021. Good for \$10 off your next purchase. **A note though, that discount codes don't stack on our website, so it's worth checking to see which works best for the individual.

Remember Erector Sets? Want to build your own Bridge? Check out <http://plushmodelsupply.homestead.com/index.html>



Candy Express? Public Transportation in Toblerone-istan?



The train is actually a former Kinki Nippon Railway – “Kintetsu” – KuMo270 series EMU. It was built in 1977 by Kinki Sharyo for the 2'6"/762mm gauge Hokusei line from Nishi-Kuwana to Ageki, near Nagoya, Japan. This line had been set to close, but was instead taken over by the Sangi Railway.'

Oh, and it's not triangular. Someone squashed it up using Photoshop. Good job though.

<https://hoaxeye.com/2019/05/13/toblerone-train/>





Train Installations, LLC

Woodstock, GA 30188

770-597-0038

dave@traininstallations.com

Check out our online store and updated website at
www.traininstallations.com

Think about other ways or things we can help you with while we are stuck at home over the next few weeks including.

- Layout planning and CAD drawings
- Custom bridges
- Overhead RR systems
- Model kit assembly
- Train storage shelving

Now is a better time than ever to distract yourself with the hobby of model railroading! Let us know how we can help.

Thanks - Dave 770-597-0038



We are pleased to announce our DESIGN LINE DRAWBRIDGES now have 3 options for opening sections. Need space for lawnmowers, lawn tractors or mobility aids? We now open up to 40". Single Track or Double Track versions.

<https://www.railclamp.com/>

What's this I hear about "coming soon Motorized Turntables???"

2022 Election of Executive Board Members

In accordance with Section 3 (Election Committee) of Article VII (Elections) of the GGRS Bylaws, the Election Committee is required to report a slate of nominees for the election of Executive Board members by means of the newsletter at least 30 days prior to the annual scheduled election (January 8, 2022). The slate of nominees for that purpose is as follows:

President – Juliet Foster
 Secretary – Pam Williamson
 Treasurer – Dennis Bass
 Members-at-Large (4) – James Bando, Emil Decker, John Lank, Ginny Manning

Additional nominations may be made from the floor (Section 4: Voting) at the Annual Business Meeting on January 8 provided the Election Committee Chairman (Terry Manning – temanning@aol.com) has been notified of the proposed nomination at least 14 days (December 25) prior to the scheduled election (to allow for printed ballots). For any contested positions, each of the candidates shall receive up to 5 minutes to speak for themselves on their qualifications or to designate another member to speak on their behalf prior to the voting.

Submitted by the Election Committee comprised of Terry Manning, Bob Avery, and Marge Lees.

Yard Hostler

Hard to believe, but the new year is beginning. Good train shows that produced new members, some great get-togethers, and exciting times ahead.

I was reading my backlog of railroad, RV, and other magazines that I subscribe to, but never find time to read when they arrive. Large stack on the bedside stand.... That being said, I picked up my Trains, Jul 2020 copy, (yes, I did say I was behind), and found an article on *5 Ways Nevada Northern Highballs History*. As I read how the railway preservation organization not only thrives, but grows, I realized a lot of the principles apply to our Garden Railway group as well:

1. **People:** The success of the organization is first and foremost, the people who fix, run, and manage the Nevada Northern Railway Museum. They're volunteers and work diligently to make the crowds happy they came, and enjoy their part in the production. We totally depend on our membership as well.
2. **Authenticity:** For them, the close adherence to the authentic is very important. Not as much for us. (I consider myself a rivet estimator as opposed to a rivet counter). I do believe we authentically enjoy what we do, whether it's a properly scaled depot with eye catching details, or a kid's Thomas the Tank Engine circling the track to be an indicator that we authentically enjoy the products produced in our scale, and authentically enjoy our presenting them to visitors at our layout or train show displays.
3. **Details:** As stated above, a depot with lots of interesting detail will delight all spectators. T. Manning and Associates excels in detail. I always shop for the small, insignificant lonely item, but one that adds so much value when added to the right scene.
4. **Fun:** What more needs to be said about this? The Nevada crew enjoys what they do, even when asked to provide "1 more run - by", they did so..... Using their coal shovels to appear to be 'padding' the train along. We often attempt to meet requests of our visitors in similar fashion.
5. **Ambition:** The Nevada Northern Railway Museum isn't satisfied to 'just rest on their laurels' of being the "East Broad Top of the West". They aspire to greater heights; more distinctive attractions to keep the populace coming back for a return visit....or maybe join in the fun. I hope we present the same ambition as we move into the new year.

For the Feb. Gandy Dancers Section, submit your "Look What I Got For Christmas" items.....

Keep those submissions coming.

Emil Decker, Editor, GGRS Gazette
 480 Grizzle Rd., Dawsonville, GA 30534

eldecker@windstream.net

