



# GGRS Gazette

## May, 2021

Official Newsletter of the Georgia Garden Railway Society

**King's**

### ~~President's Message~~



### Burger King Usurps Office of President

Why be a Railroad Baron when you can be a Railroad Monarch? The Burger King has a fleet of fast stockcars racing to slaughter houses everywhere. *[not sure what house to take the Ultimate meatless burgers to....]* Hold the pickle, hold the Lettuce, Ride upon my Railway Express....Why let everyone else have it their way? I'm taking control, & **having it my way!**

*Don't Wait in line. Become the president. I am sure you can have the position "your way." [Editor]*

### In This Edition

President's Message.....	1
Great Train Robberies .....	1
Track Warrants.....	2
1:1 Train Ride.....	3
Hoptown Update.....	4
Amtrak 1?.....	5
Highballing Down the Track.....	6
Rip Track.....	8
Yard Hostler.....	10

## Great Train Robberies #3

#3 in a series about Great train robberies appearing in the next couple of issues. Which will be your favorite? Will you stage a scene on your railroad this year?

### The Great Gold Robbery of 1855

Most train robberies are high profile crimes committed by armed bandits, but the Great Gold Robbery was the railway equivalent of a cat burglary. The heist was discovered in May 1855 in Paris, when authorities found that the gold in four lock boxes shipped from London had been partially replaced with lead shot.

The boxes had been kept in double-locked safes and showed no signs of having been tampered with. At some point during the train journey between England and France, around 12,000 British pounds worth of gold bullion—the equivalent of some \$1.5 million in modern day currency - had simply vanished.

At first it was assumed the robbery must have taken place in France, but once this was disproved; Britain's law authorities made desperate attempts to catch the thieves. The railway police interrogated the train guard; James Burges, but he remained tight-lipped, claiming to be mystified by it. As the weeks went by, it looked like the thieves were going to get away with 'the great bullion robbery' as the press were referring to it.

As police would later learn, the crime was a carefully planned inside job. In the late 1840s, William Pierce was working as ticket printer for the South Eastern Railway when he met Edward Agar. Both men had committed many petty crimes before they met. In conversation,



Edward expressed curiosity about the security and procedures surrounding the transport of gold. Pierce explained to him how the gold shipments were sent.

Working with a station - master and a train guard, masterminds Edward Agar and William Pierce had obtained wax imprints of the safe keys and painstakingly made copies. On the night of the robbery, the men disguised themselves as gentlemen and boarded the train in London carrying luggage filled with lead.

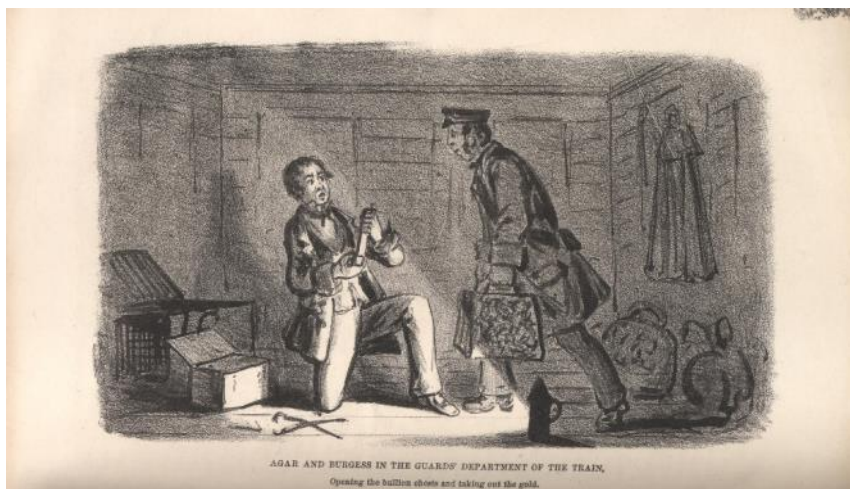
Once in transit, Agar and Pierce stowed away in the baggage car and used their copied

*Continued on page 2*

keys to open the safes. After switching the gold with their dummy lead weights, they resealed the boxes and disguised the loot in their luggage before exiting the train in Dover.

A woman called Fanny Kay finally broke the case wide open. Fanny was the lover of one Edward Agar. Agar had been framed on a charge of passing false cheques. As he waited to be transported to Australia, Agar wrote to Fanny, saying that his criminal associate William Peirce would give her money to keep her and their child safe.

However, Peirce ignored the pleas of Fanny, and as she became more desperate she decided her only option was to tell the story to the police. Naturally, the authorities were skeptical of this desperate young woman, but decided to take her down to see Agar. Agar was so infuriated by Peirce's treatment of his girl that he decided to tell the whole story.



## Track Warrants

The May meeting for the Georgia Garden Railway Society will be Saturday, May 29 hosted by Ted & Deborah Yarbrough in Chatsworth, Georgia. The garden railroad was constructed in 1992, with additions and remodels preformed at later dates. The railroad features 5 loops that are not connected and cover just over 250 feet of track.

Narrow gauge models representing the Denver and Rio Grande Western and the Rio Grande Southern, both set in Colorado, run on the railway.

Locomotives are Bachmann, Hartland, LGB and are track powered. Accucraft AMS, Bachmann Spectrum, and a few other odds and ends make up the rolling stock. Custom wooden buildings make up the towns and villages around the rail line.

Miniature plants can be found on the garden railroad. The garden railway was featured in the June 2018 Garden Railway's Magazine and was on the pre-tour for the 2018 National Garden Railway Convention.

The garden railroad will be open for touring from 11:00am until 3pm. A meal will be served at 12 NOON featuring pulled pork BBQ, buns, chips, and drinks. Members are asked to bring their favorite side or dessert. Ted will have a few extra train related items available for free, so be sure to take a look.



This meeting will be in conjunction with the pre-tour for the 2021 National Garden Railway Convention in Nashville starting the next week. There may be convention attendees visiting the meeting, so you will have the opportunity to meet them. In addition, the Chatsworth Depot will be open for tours the same hours. Please take some time to visit the 1905 L&N Depot and 1960 SCL Caboose. There is a small g-scale operating model railroad inside the depot. Other GGRS members are opening for pre-tours as well, so plan your visits so you can include stops at many of them.

The GPS address is **212 Love Drive, Chatsworth, GA** and it will generally work well until in the driveway. Once in driveway, take the fork to the right. Phone number is 706-581-5482 if lost or have questions. When departing the Yarbrough's, return to HWY 411, turn left, go to second traffic light and turn right. Turn left at paved street past the 4 way stop and you will see the L&N depot. It is about two miles from the Yarbrough's home. See you on the way to the Convention!



Event	Location	Date	Status
Vines Railroad Opening	Vines Garden 3500 Oak Grove Rd., Loganville, GA	May 15	Could Really use some <b>HELP !</b>
GGRS May Meeting & Pre-convention Layout	Ted Yarborough 212 Love Dr Chatsworth, GA	May 29, 2021	Outdoor Display and Meeting
Pre-convention Layout / Yard Sale	Dave Bennett 506 Creekridge Ct. Woodstock, GA	May 29, 2021	10 - 4
36th National Garden Railway Convention	Gaylord Opryland Resort, Nashville, TN	May 30 - Jun. 5, 2021	Ngrc2020.com
GGRS June Meeting	Peter & Lori Thomas 422 Cothran Rd Dawsonville, GA	Jun. 19 2021	In Planning Stage
GGRS July Meeting	Terry & Ginny Manning	July ? 2021	In Planning Stage
<b>GGRS August Hosted Meeting ??</b>	<b>Your Layout ??</b>	<b>August ? 2021</b>	<b>Plan Now!</b>
SER Convention	Hilton Hotel Greenville, SC	Sep 9 - 12, 2021	Rescheduled
The Model Train Expo	Chatsworth Depot	Sep. 11, 2021	Outdoor Display
GGRS September Meeting	Dennis and Ellen Bass 1972 Lansbury Court, Snellville, GA	Sep ? 2021	In Planning Stage
Model Train Show 2021	Clarence Brown Convention Center, Cartersville, GA	Oct 2 - 3, 2021	On a siding but still on schedule
GGRS October Meeting	Phil and Barb Jones 8084 Allerton Lane Cumming, GA	Oct ? 2021	In Planning Stage

## Almost Back on Schedule !

We have two more gracious volunteers to host our GGRS Monthly Meetings. Ellen and Dennis Bass will be hosting in September and Barb and Phil Jones will be hosting in October.

That leaves **August** available for a host family in 2021. So, if you want to share you outdoor or indoor layout or need club assistance with planning a new railroad please let me know and well put you on the calendar for August.

**Pam Williamson**

[pspaan@msn.com](mailto:pspaan@msn.com)

770-851-9462

## CSX needs some Modeling Help!

*Joshua Hicks is a Technical Trainer in the Signals and Communications Dept. at CSX at their Training Center in Atlanta. He has been tasked with building a rather large HO scale model for training Transportation and Mechanical students.*

Short story long, I have built around 30 simulators using G scale for Signal training - Crossings, switches, signals, track circuits, etc. They are all real-world in both look and function. Joshua used SCARM to design the layout, and got it approved after about 6 weeks of reworking to his approval. Finally started construction on the base Jan 6th, and is currently laying the last of the 600 or so feet of track on this 30'x40' layout (shaped like a capital "E", with the top and bottom legs 28', center leg 20', and 16' upright). Joshua needs several thing....

First, if there is anyone in the Atlanta area that would like to volunteer time to help, (I am

clearly not a modeler), and it's hard to make my brain not want everything to function like it does for me on the actual RR, working out some technical electrical issues, and about to pull my hair out!! HELP ! !

Second, scenery....I am also not an artist, and the little bit I've done (about 2 sq ft) looks like a 4 yr old did it. Not good when the EVP expects a high level of detail and realism.

Last, we have a special "Presidential Train" that the exec team uses for travel. Dining cars, fitness car, conference and observation cars, etc. Most are Pullman Standard and Budd, and I'm having a hard time locating scale versions. Is there a website that might specialize in these things, as I have looked at most of the more common sites. I have a list of the consist with make, model, and year built for most of them.

Contact me for details! I hope that I can count on your help! 706-326-9654

**Joshua Hicks** [Joshua.Hicks@csx.com](mailto:Joshua.Hicks@csx.com) Technical Instructor – Signals CSX REDI Training Center

# GGRS 1:1 Train Ride

## 1:1 Scale Train Ride Saturday July 24

The Georgia Garden Railway Society's 1:1 scale train excursion for 2021 will be aboard the Cater Parrott Railnet diesel powered train, Azalea Sprinter, which is a brand - new tourist train operating in South Georgia. Our group will view the scenic country side of Rural Georgia, departing promptly at 9:30am. from the Nashville Georgia Farmer's Market and traveling North to Willacoochee along the Historic Georgia

and Florida Railroad, then returning to the Farmer's Market. The ride is 35 miles, round trip and takes approximately 2 ½ hours. There is plenty of free parking at the Nashville Farmer's Market.

Our group will be seated in the table car, a stainless-steel car from the Royal Palm, a named passenger train that ran from Cincinnati, Ohio to Jacksonville, Florida on the Southern Railway. The train last operated in the 1970's. During the round-trip ride, enjoy complimentary water and light snacks; additionally, you will have access to other concessions and the souvenir stand inside our car.

Tickets are \$45.00 per person (they will be \$51.00 per person if we do not get a minimum of 20 tickets sold for our group). Please make your check payable to Ted Yarbrough and mail to **212 Love Drive, Chatsworth, Georgia, 30705**. Your check must arrive by **May 1, 2021!** The railroad is holding 24 seats for our group.

Some of the GGRS like steam trains, so this trip will have a special treat. After the Azalea Sprinter ride and lunch, GGRS members can venture on their own to visit the Georgia AGRIRAMA in Tifton, where a Vulcan 0-4-0 steam train operates. Tifton is about 30 minutes northwest from Nashville and is located right along I-75. The train runs until about 3:30pm on Saturdays. Tickets are \$7.00 for adults or \$6.00 for seniors and can be purchased individually at the large store located at the museum entrance. Located at the AGRIRAMA, in addition to the train ride, are many fine examples of turn of the century architecture that could be great modeling inspiration for our G-Scale layouts. These are original Georgia buildings, just relocated to the museum.

Lodging can be had at three Hampton Inns conveniently located near Nashville, Georgia. Adel, approximately 12 ½ miles west from Nashville, has rates starting at \$95.00. Tifton, approximately 23 ½ miles northwest from Nashville, has rates starting at \$112.00 (I have made my reservations at this one for July 23). Finally, Valdosta (I have stayed here a couple of times), approximately 27 miles southwest from Nashville, has rates starting at \$160.00.







Left: Parking for train at Nashville.

Below: Train at Agra-Rama.



## DID ANYONE MENTION ???

Tickets are \$45.00 per person (they will be \$51.00 per person if we do not get a minimum of 20 tickets sold for our group).

Please make your check payable to Ted Yarbrough and mail to:  
**212 Love Drive,  
Chatsworth, Georgia,  
30705.**

Your check must arrive by  
**May 1, 2021!**  
The railroad is holding 24 seats for our group.





## Gandy Dancers

Highlighting Members and their work

### Theme for the Month - Figures on your Railway

*Does your railroad have inhabitants? send in a photo of your favorite person, figure, character, whatever you want to call the scale Resident of your railroad empire. Maybe its an engineer, the hobo, the town floozie, or a well known cinema hero or heroine. Maybe you have some aliens of your own like Russ does.....(see last issue)*



Left: Tough choice to make, but I liked this scene one morning when the prison detail had a particularly tough job on its hands.

Or

Below: Crying over spilt milk is a farm favorite. - Terry Manning



**Can you ride the Hogwart's Express for real? Is there really such a train ? ? ?**

**Answer on page 15.**







Above: Shop foreman Johnny is working on the sand dome of RGS #20 in the Chama shop. - Ted Yarborough



After Russ showed his aliens, and choosing an individual person from my collection of characters,.....Gee, I just had to go with my own aliens. - Emil Decker

The bucket of Toy Story Aliens was simply something I couldn't pass on. The little rocket on top of the space ship came with them. The main ship itself was a cast off gum/nut/candy dispenser that a fellow teacher no longer wanted. The opening reminded me of these guy's mouths. A quick paint job, add the rocket on top, and part of a plastic desk caddy on the bottom, and I had what I felt was the perfect spaceship. Oh, and of course, Marvin the Martian as commander.

Having it land at "Wreck-Often Airfield" was the obvious spot for it...





## ***A Perfect World' Around Every Miniature Bend***

<https://www.nytimes.com/2021/03/18/business/model-trains-pandemic.html?searchResultPosition=1>



By Christopher F. Schuetze, March 18, 2021

*Seems the Pandemic wasn't all bad for Model Railroading..... Check out this article at the NYT.*

**John Lank**

BERLIN - Last spring, the managers at Märklin, the 162-year-old maker of model trains, were surprised by the unexpected upsurge in sales reports. Märklin's monthly orders were up 70 percent over the previous year in November. Along with baking and jigsaw puzzles earlier during the pandemic, model trains are among the hobbies being rediscovered while people are cooped up indoors. Märklin makes LGB trains, which are larger outdoor models.



*Liquid zinc alloy is filled into a tank before being cast with an industrial metal press.*



*A stamp printing machine that applies detailed small prints to the casings.*



*Modern model trains can reproduce dozens of digital noises.*



Photo Credits ...Felix Schmitt for The New York Times

*There's more to read in the article. Check it out.*

# **märklin**





*Ted Yarborough* shared this info about the New Bachmann 4-6-0. Note: lots of new moldings and details on tender. Pittman motor is basically only major change to locomotive (some locomotive to tender wiring and connections have changed). \$500 plus change street price.

<https://docs.google.com/presentation/>

[d/1Iwei7Al9TIIAiBACUJj7QJjl3LMU31ju-NyD4kyvNM/mobilepresent?slide=id.gcaabe08d8d\\_0\\_1](https://docs.google.com/presentation/d/1Iwei7Al9TIIAiBACUJj7QJjl3LMU31ju-NyD4kyvNM/mobilepresent?slide=id.gcaabe08d8d_0_1)

## NMRA SER News

The SER and Palmetto Division are moving forward with plans for Swamp Rabbit Express, the 2021 Convention to be held at the Hilton Hotel, Greenville, SC, September 9-12, 2021. Check out the Convention website -

[www.swamprabbitexpress.org](http://www.swamprabbitexpress.org) Dave Winans,  
Convention co-chair



## Santa Clara 2021 NMRA National Convention and National Train Show cancelled ! Now ONLINE !

The NMRA has cancelled the NMRA 2021 Santa Clara "Rails By the Bay"

Convention, scheduled for the Santa Clara Marriott Hotel & Conference Center on July 4-11, 2021.

We did not reach this decision lightly but felt it was the best for anyone who would want to attend given the current status of the pandemic, disbursement of vaccine, and the fact that people were waiting to see what would happen before they registered. Moreover, local prototype facilities were not open and, understandably, home owners were reluctant to allow people in their homes.

However, St. Louis will host the 2022 convention and it is expected that all contracts for that convention will be signed shortly, if not by the time you read this. See you all in St. Louis [August 7 - 14, 2022](#).



## Highballing down the Track



Hindsight is...

# 2021!

## 2021 National Garden Railroad Convention Update

May 30 to June 5, 2021 Nashville, TN

Nashville Clinic Schedule (So far, it appears the schedule is the same each day.)

The National Garden Railway Convention will be held in Nashville, TN May 30 through June 5, 2021 hosted by the Nashville Garden Railway Society (NGRS). As we all know, running a convention takes a multitude of hands.

*"Nashville was very supportive with Pre and Post Hosting for our 2018 convention. Please consider Hosting a Pre or Post Tour of your Garden Railroad so we can return the favor." - Ted Yarborough*

Ted will have his layout open on Saturday, May 29th for our member meeting and for Pre-convention travelers. Come and visit.

Dave Bennett will also be having a pre-convention open house and train "yard sale" from 10-4 on Saturday May 29th (same day as Ted's meeting). Drop by both on your way to TN, or even if you are not attending the Nashville Convention.

## OFFICIAL OPRYLAND RESORT LINK for room reservations.

<https://book.passkey.com/gt/217980430?gtid=9033269c7385dfceb1039d25aa68e7f5>

NOTE: There is a highly limited number of rooms available before and after the convention dates due to large events in Nashville. The following dates are on a first come- first served basis... May 30th, June 6th, and June 7th. Once they are gone, they're gone.

In order to stay at the resort before or after the convention you may need to call Opryland and the **convention rate is likely not available**. This is beyond our control and normal rates would be up to the Opryland Resort.





Rain, rain, rain go away! March 2021 has been the wettest March in Nashville since records have been kept dating back to 1871. Nashville received 5.75 inches of rain on March 28 which set a record for the most rainfall in 24-hour period in March and the fourth largest amount of rainfall in a single day in history. Coming into March we had a 1.78-inch rainfall deficit. On April 1, we now have over a 9-inch rainfall surplus. That pretty much tells the story.

Several people have sent email asking if everyone is safe and if any railroads were damaged. We greatly appreciate your concerns and very kind words of support. All the railroads survived the heavy rains with only debris washing up on the track and ballast floating away with the exception of one. Unfortunately, the railroad damaged by the tornado last year has received damage due to flooding. As a club we will come to the rescue and get the layout up and running in time for the Convention. Talk about the challenges of model railroading outside!

The Davidson County Health Department and the City of Nashville have further eased restrictions. Restaurants and music venues are now permitted to have 175 people per floor in the building with a maximum occupancy of 2,000 people. In addition, these venues can now remain open until 2:00 AM.

Convention Registrations: We will be purchasing Convention supplies for your registration packets on April 15th. If you are considering attending the Convention, please complete your registrations so we have an accurate count of attendance when we place our supply orders. If you transferred your Convention registration from 2020 to 2021 you do not need to re-register for the Convention. We have a log of all activities you signed up for and everything will be directly transferred over. However, if you want to add additional activities for your family to enjoy during the Convention, please go to the Convention website ([www.ngrc2021.com](http://www.ngrc2021.com)) to make your purchases. If you want to make changes to dates, times, or cancel an activity, please contact us directly via email ([NGRCNashville@gmail.com](mailto:NGRCNashville@gmail.com)) for assistance.

**Please be aware we are still dealing with a very fluid situation due to COVID-19 pandemic. Schedules for the convention could change due to COVID-19 conditions or event locations forcing us to make changes which could be out of our control. We are trying to manage these situations as they arise to the best of our abilities. Rest assured we are not going to take unnecessary risks that jeopardize the health and safety of our guests or club members. We will continue to follow CDC guidelines and local health regulations. Changes affecting the convention will be included in future newsletters, posted on the Convention website ([www.ngrc2021.com](http://www.ngrc2021.com)) and also on Facebook.**

#### **Tickets for Grand Ole Opry, General Jackson Riverboat, and Other Optional Activities**

In about two weeks we will be purchasing tickets for the Tuesday and Saturday night performances of the Grand Ole Opry, the General Jackson riverboat cruises, Backstage Opry Tours, Country Music Hall of Fame and Jack Daniels tours. For those that purchased tickets for these activities, your tickets will be placed in your registration packet. After Friday April 23, we will prevent new purchases of tickets for these activities. Any unsold tickets in our blocks will be released for sale to the general public. **Once we purchase tickets for these events, there will be no refunds issued.** If you are considering attending any of these special activities, please make your purchases before **Friday April 23.**

#### **Train Excursion and Trip to Kentucky Railroad Museum**

The seating restriction on the May 31 train excursion at the Kentucky Railroad Museum has been relaxed and we can now seat 210 passengers on the train. **Each passenger will be required to wear a mask on the buses and train.** We will have a limited number of tickets for the train excursion available for sale on-line beginning on April 12.

#### **Informal "Meet and Greet" Reception on May 31**

We received an email from an individual stating this was going to be the first National Garden Railroad Convention he has attended. In the email he hoped new Convention attendees would be openly welcomed and there are opportunities to meet and socialize with other garden railroaders. This got us thinking. We are pleased to announce there will be an informal "Meet and Greet" reception on **Monday May 31 from 6:30 to 8:30 PM** in the banquet room at the **Bavarian Bierhaus** ([www.bierhausnashville.com](http://www.bierhausnashville.com)) located in the Opry Mills Mall (121 Opry Mills Drive, Suite 315). The Bavarian Bierhaus is a German restaurant, and yes, serves imported German biers (beers). We anticipate the tour buses will return to Nashville following the Monday train excursion to the Kentucky Railroad Museum around 6:15 PM (depending on Nashville traffic). This will be an informal gathering for all convention guests that would like to attend. Each person is responsible for their own food and bar bills. The restaurant is about a 10-minute walk from the Opryland Resort. There is a shuttle bus that runs between the resort and Opry Mills Mall.

Kathy Winter from "Stampin' Up" has volunteered to lead two clinics on scrapbooking which will be of interest to some attending the Convention. She will teach about developing a scrapbook to preserve memories of your own personal garden railroad or whatever your imagination leads to. These clinics will be held from 3:00 to 5:00 PM on Wednesday June 2 and also again on Friday June 4. The clinics are limited to 12 people and there is a \$25 material cost fee. There are still spaces available for both of these dates. Tickets for the Women's clinics can be purchased online through the Convention website ([www.ngrc2021.com](http://www.ngrc2021.com)).



*Name on Ladies shirt*                      *(Specify Name)*                      \$5.00



## Train Installations, LLC

Woodstock, GA 30188

770-597-0038

dave@traininstallations.com

Check out our online store and updated website at

[www.traininstallations.com](http://www.traininstallations.com)

Think about other ways or things we can help you with while we are stuck at home over the next few weeks including.

- Layout planning and CAD drawings
- Custom bridges
- Overhead RR systems
- Model kit assembly
- Train storage shelving

Now is a better time than ever to distract yourself with the hobby of model railroading! Let us know how we can help.

**Thanks - Dave 770-597-0038**



With Jeff Damerst's permission, I am inviting all readers to check out our "preview page" at [www.railclamp.com](http://www.railclamp.com). You are among the first to hear the news. I am relatively new to G Scale, but I have decades in the smaller scales. So when **Split Jaw Products Inc.** closed down, and nobody else filled the void, I decided to enter the model train business. All products will be made in the USA at our factory in **Georgia**.

If you are a G Scaler, the website has a form where you can sign up for announcements.

Happy Model Railroading!

David

*PS. We plan to exhibit at NGRC in Nashville.*

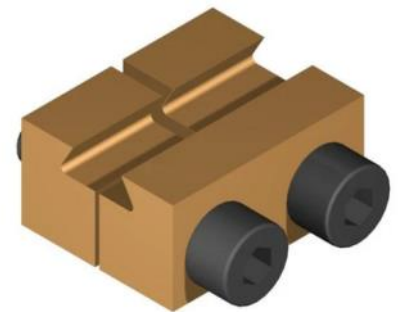
*This is good news for a product no longer extinct !!!*

## Own a piece of Authentic Railroad History

When you think of games and railroads, the first to come to mind is probably Parker Bros.' Monopoly. Created during the Depression, the game's 4 railroads are centered, 1 on each side of the board. B & O, Pennsylvania, Reading, and Short Line. Now you can own a framed set of the real railroad stocks depicted in the game, along with a history of each railroad and the story behind the game itself.

Enclosed in the frame are Authentic stock certificates, corresponding Monopoly Deeds, and a brief history of each. The 31" x 25" framed set is perfect for your game or train room. And you can have all of this for only \$100.

Contact Emil Decker, [eldecker@windstream.net](mailto:eldecker@windstream.net)





**Rocks are a marvelous way to enhance  
your Railway experience**



Custom carved stonework for your RR., Garden stones, Pet Memorials. Deep etching provides years of enjoyment. Let everyone who visits your railway know you are a proud Georgia Garden Railway Society Member.

[sticksnstones@ weegrr.com](mailto:sticksnstones@weegrr.com)



Birthday coming up? Drop a hint to your family with our new digital gift cards. Just a click and it's in your inbox!

Visit us at [Trainz.com](https://www.trainz.com)

[trainz.com/products/trainz-digital-gift-card](https://www.trainz.com/products/trainz-digital-gift-card)

*Emil Decker's*  
STICKS  
+  
STONES



## Hogwarts Express

To ride the Hogwarts™ Express to Hogsmeade™, head to London in **Universal Studios Florida™**. Enter King's Cross Station and walk straight through a solid brick wall onto Platform 9 ¾™. There, a Hogwarts™ station staff member will be waiting to lead you to your passenger compartment aboard the train.

As you wind your way through the urban outskirts of London into the British countryside, keep watch outside your window. You never know who—or what—you might see flying, swooping, or lurking outside the train before alighting at Hogsmeade™ Station in Universal's Islands of Adventure™ theme park, located next door to Universal Studios Florida™.

To board and ride the Hogwarts™ Express between the two lands of The Wizarding World of Harry Potter™, you'll need a Park - to - Park admission ticket. Additional restrictions apply.

**BUT .....** To ride the **REAL** Steam train that the movies used, you have to go to Scotland. The Hogwarts Express is in fact a famous (and highly photogenic) steam train, The Jacobite, taking passengers 135 km. through mysteriously misty lochs and the green hills of the Scottish Highlands. It doesn't just look like the famously magical train, it is the actual vehicle used for filming. Fans can even book a seat in the Harry Potter compartment to ensure they have the best views of all locations along the train journey.



## Yard Hostler

The National Convention is just around the corner. My how time flies. Are you going? Bring back some pictures for the Gazette. Make sure you take advantage of the closer events happening this summer. See the August gap in the GGRS scheduling? Would you like to fill by having us all over to your railway? Let Pam Williamson know and she will get you on board.

[pspaan@msn.com](mailto:pspaan@msn.com)

770-851-9462

We got some interesting figures on our railways sent in this last month. The scenes were examples of how figures make the scenes on your railroad really stand out!

Have to love the spilt milk from Terry and Ginny's farm. For June, let's allow PETA, (*People Eating Tasty Animals*), have a shot at the Gandy Dancer Section,....gang. Yep, let's post our favorite "animal" on our railway. Might be a scale horse, cow, chicken, or a real live chipmunk that invades our layouts, or even a bird that "white washes" the miniature fences.... If you have a favorite animal in your collection or a frequent visitor, then send in a photo. Do it quickly, before you forget.

Emil Decker, Editor, GGRS Gazette  
480 Grizzle Rd., Dawsonville, GA 30534

[eldecker@windstream.net](mailto:eldecker@windstream.net)

