



GGRS Gazette

November, 2022

Official Newsletter of the Georgia Garden Railway Society

Good Times in Mineral Bluff



The membership that attended the October Meeting / 1:1 rail ridin' (*though small in size, large in fun*) seemed happy making the trip to the North Georgia town of Mineral Bluff. Chef Roy "Burgoo" Williamson was in charge of the Tube-Steak, while the Soo Line Chef, Emil "How do you want it burnt?" Decker was in charge of the Minced Bovine Patty charring.

Continued on page 2

At The Depot

In This Edition

President's Message.....	1
Good Times at the Depot	1
Track Warrants.....	7
High Speed Trains.....	8
New Members.....	9
Shop Foreman.....	11
Gandy Dancers.....	12
Conductor.....	14
Savannah Christmas Tour.....	15
Rip Track.....	19
Train Slang	21
Train Hostler.....	21



President's Message

I am sad to have missed the beautiful day at Mineral Bluff. I hear it was a wonderful gathering! Hurricane IAN hit a little too close to our winter home and has had me scrambling. Thank you to all that have filled out the survey, provided budget feedback and nominated a railroader(s) of the year. If you haven't shared your input - there is still time ;). You can reach me at Juliet_esp@outlook.com or 602-695-2042

Our last outing of the year promises to be very special. I look forward to seeing you in Savannah in December

Enjoy !

Juliet Foster

Mineral Bluff

Cont.

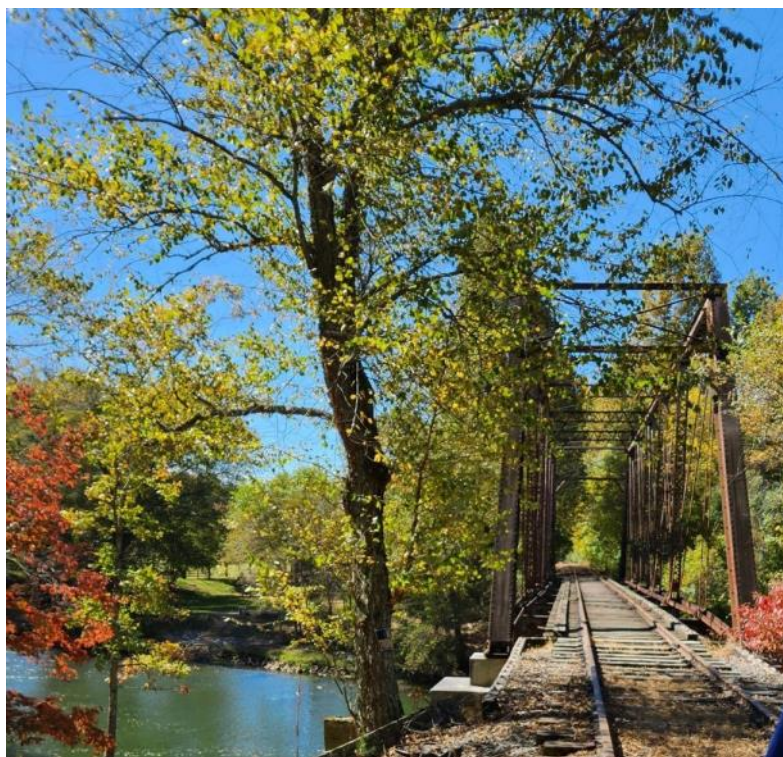
The Maintenance of Way vehicle ride was a little rough over the jointed track, what with its small size accentuating each bump, but the view was fantastic. The weather, the time of year, the whole experience was one I am sure you either enjoyed, or are envious that you missed. Don't worry. We will do this again. *[One member recommended a yearly trip here.]*



Mineral Bluff Depot is a historic train depot of the "Marietta and North Georgia Railroad" which was built in 1887. It is located at 150 Railroad Avenue and was added to the National Register of Historic Places on March 1, 2007. It had passenger service until 1949 and freight service until the late 1950s. The Tri-State Model Railroaders operate an HO scale representation of the run from Marietta through Mineral Bluff and into Andrews, NC.



Is it the real depot or an excellent scale model of the Mineral Bluff Depot. Yeah, the background is the only thing that gave it away.



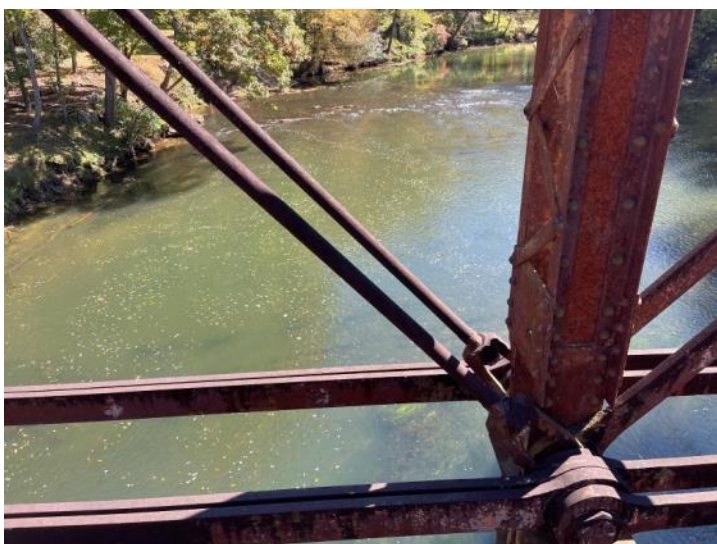


In addition to serving our group, we treated the Tri-State folks to some fine fixin's as well.

Even the youngest of our team was very happy with the day.



Just around the corner from the depot, across the bridge was the largest collection of "Yaad Art" you could possibly imagine.





Track Warrants

Event	Location	Date	Status
GGRS Oct 2022 Meeting	L&N Depot, 150 Railroad Avenue Mineral Bluff, GA.	Oct 8, 2022	Ride the Rails: 1:1 rides, layout, picnic & more
NMRA Piedmont Pilgrimage	Various. Lots of scales, lots of awesome layouts! Sat. & Sun.	Oct 22 - Nov 20	https://piedmont-div.org/pilgrimage/
North GA Steamers	1632 Centennial Olympic Parkway NE, Conyers, GA	Nov 5, 2022 1 - 4:30	Ride the 7" Gauge trains
Christmas at the Tellus Science Museum	Cartersville, GA	Dec 10 - 11, 2022	Santa and a large scale layout
GGRS Dec 2022	Savannah Christmas Tour	Dec 10 - 11, 2022	GA State RR Museum & Lights / More
Annual Business Meeting & Christmas Luncheon	Provino's, Kennesaw, GA	Jan 14, 2023	In Committee
Trains, Trains, Trains	Southern Museum, Kennesaw, GA	Jan 27-29, 2023	Trains Galore!
Chatsworth Train Expo / Club Meeting	Depot - Chatsworth, GA	Apr 8, 2023	Setup on the lawn
North GA Steamers	1632 Centennial Olympic Parkway NE, Conyers, GA	Apr 29, 2023 1 - 4:30	Ride the 7" Gauge trains
GGRS Club Mtg	John & Marge Lees Dahlonga, GA	May 13, 2023	Come see the 1:1 Caboose
North GA Steamers	1632 Centennial Olympic Parkway NE, Conyers, GA	May 20, 2023 1 - 4:30	Ride the 7" Gauge trains
GGRS Club Mtg	Tom & Eileen Conrad Southwest "Tour of Depots"	June, 2023	3 layouts
GGRS Club Mtg	?	Jul, 2023	Open - Invite us to visit
GGRS Club Mtg	?	Aug, 2023	Open - Invite us to visit
GGRS Club Mtg	Deborah & Ted Yarborough	Sep, 2023	
GGRS Club Mtg	John and Marge Lees Dahlonga, GA	Oct, 2023	
1:1 Train Ride			Looking into options

High Speed Trains

Tracy and Dave Bergmann have planned to ride European high speed trains. They have planned, saved for, and delayed, taking a vacation for years. They sent these pictures from their train traveling from Rome to Venice.



Model Train Swap Meet

NOV. 5th & 6th 10am-4pm
Saturday Sunday Set-up Nov 4th 3-7pm

Located in **the Lander's Crossroads**

Exit 320 off I-40 Behind BUC-EES

Table Rental \$15 per 8'

To Reserve Space Contact

Ralph Watson 931-248-4263 crossvilletrains@gmail.com

FREE Admission

SPONSORED BY THE **CROSSVILLE MODEL RAILROAD CLUB**



Not the train Dave was on. Makes you wonder how far back on the line it derailed.

Wonder if we are "on target" with our newsletter. A way to check our boiler pressure is to look at samples of other groups' newsletter, if they have one. Here is the link to the Long Island Garden RR.

<https://img1.wsimg.com/blobby/go/edf765e3-40a0-4c08-8bba-2961f0e6750b/downloads/September%202022%20LIGRS%20newsletter.pdf?ver=1662587586389>

Meet Some of Our New Members!

Michael & Jenene Clapp – Aiken, SC



Charlie & Jack McQueen – Pooler, GA

Melanie, Arthur, & Martin Birch – Milton, GA



Luke Peters – Dallas, GA

JR Holiday – Milton, GA



Greg Harris – Cumming, GA



Kristy & Ron Humphrey- Cumming, GA



Brendan & Michele Schenuk



Jay & Alex Stuckey – Lawrenceville, GA



Sue & Steve Mesarosh – Peachtree City, GA



~~I bribed my way~~ er, won in a closely contested race for the 2021 Railroader of the Year award. Terry Manning, 2020 Railroader of the Year, was a great choice. Pam Williamson took the 2019 honors.

Who do you think would be the best candidate for 2022?

Send your nominations to President Juliet at Juliet_esp@outlook.com or 602-695-2042

Railroader of the Year

**MOST AWESOME
WHO ??**



**RAILROADER
OF THE YEAR
2022**



Garden Railroading News 2022 #5 has been released.

GGRS members and others can view/download it at www.grnews.org

Please draw your keen photographers to the 'exposure opportunity' described on page 29.

Our new YouTube Channel has logged more than 4,000 video views in less than 2 months!

We have now posted 'BAGRS World' the first in a series of slideshows that will feature garden railroads which will be open during the National Garden Railway convention in the San Francisco Bay Area.

Our YouTube channel will be a great place for GGRS members and friends to learn more about the 2023 Convention and the 75 + railroads expected to be open July 1 to 8, next year.

It's going to be spectacular! Stay tuned! But first check out 'BAGRS World #1' here:

<https://youtu.be/-a0DXKPvmcY>

Shop Foreman

Ted Yarborough

The shops have closed for the evening in Chama. All the workers have gone home. You can see

from these photos that work on the new sand house is progressing at a good pace.

Sand house made with materials found at Hobby Lobby except for left over shingles from another project. Roof could be tin formed with paper crumpet and soda cans or tar paper made from fine sandpaper painted black.



Status of 2023 GGRS Membership

Dues of \$25 for 2023 are now payable. Send your check made out to "GGRS" to:

Ginny Manning, Membership Chairman
1201 Timber Glen Ct. SW
Lilburn, GA 30047

Thanks to the following 25 families for payment to date of dues for 2023: Bass, Birch, Bundy, Clapp, Conrad, Decker, Elliott, Fotschky, Foster, Griggs, Harris, Holiday, Humphrey, Kinnaman, Luebs, Manning, Neos, Pearl, Reh, Sehenuk, Steidle, Stotler, Stuckey, Thomas, Tidd, Williamson, and Yarbrough.



Gandy Dancers

Highlighting Members and their work

Bob Avery gave us a couple of starter sedums at a meeting this spring. They did well!
- Terry Manning



I confess. When I visit layouts, I envy the lush growth of the various plants that are thriving at every spot along the right of way. I want to take a shovel and scoop them up to carry home and plant in my layout.

It wouldn't do me any good though. They would probably die, as I have a black thumb. I also believe the current owners of the plants wouldn't be happy with me, nor invite me back to their layout.

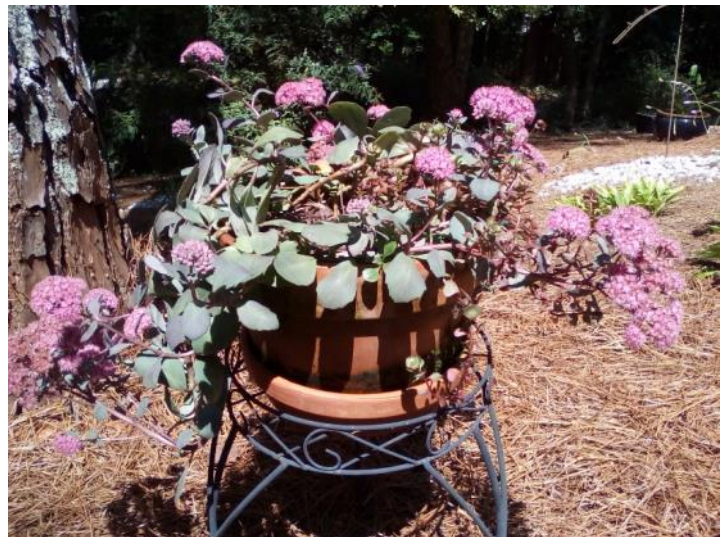
Sharing seeds, cuttings, or starter plants from your successes at growing the green (*and red, yellow, purple, etc.*) stuff gives other members an opportunity to expand their landscaping railway vegetation to be as nice as yours. Except for mine.....they just die!

I have to be fair. Truthfully, there are a few plants that won't die, regardless of how many times I run over them with my lawn equipment accidentally of course. The wife wanted some awful sticky bushes that I hated from the start. They, of course, have flourished.

Think about offering some successes you have encountered by participating in a plant swap at a future meeting. Bring some plants, get some plants, and watch the magic of Mother Nature take its course. You might see your contribution to another's layout to be just what they needed.

Maybe, just maybe, if I dislike the variety enough, they might grow for the wife!

Editor



I found one car and created another one for our Halloween Town layout in our basement this year. - Terry Manning

[I guess one of the nice things about how the Manning's have their indoor table layout set up is that with a little time, some scenery and freight changes, you can celebrate seasonal changes all year long.]



[Hey Terry. Maybe your next project might be a converted loco like this?]

Conductor

We had an English family join the club at the September train show and she was asking about gauge for garden. Think I might have confused her more than helped. If you think it would help, here is a chart I found. - Russ Bundy

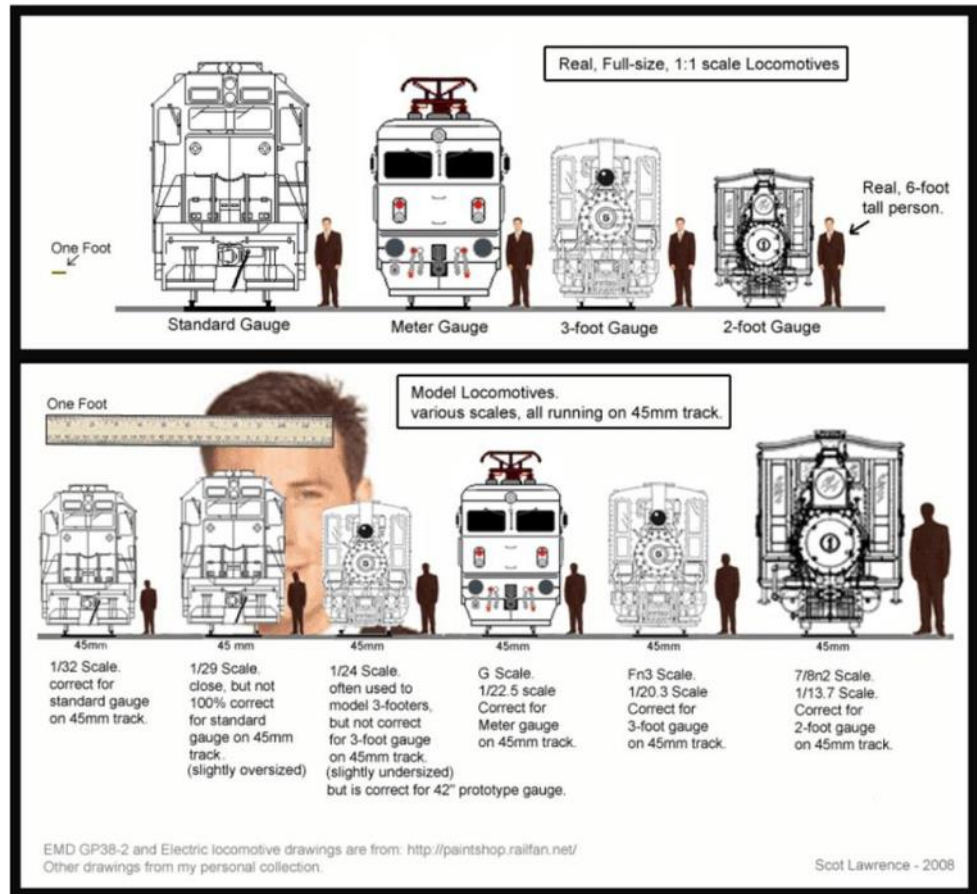
As always, Russ, being a regular contributor, has hit upon something that often is confusing to modelers of all scales, but especially Garden variety trains.

His chart helps provide a bit of information with the relationship of real size vs. gauge vs scale size.

Although scale and gauge are often confused, scale means the ratio between a unit of measurement on a model compared with a unit of measurement in corresponding full size prototype, while gauge is the distance between the two rails of the track.

About 60% of the world's 1:1 railways have a track gauge of 4 ft 8 1/2" known as "standard gauge". But there are also narrow- gauge railways where the track gauge is less than standard (3 foot or other odd gauge), and even broad-gauge railways where the gauge is wider.

In a similar manner, a scale model railway may have several track gauges in one scale, i.e. the relationship between scaled equipment and the track can look strange if mixed together.



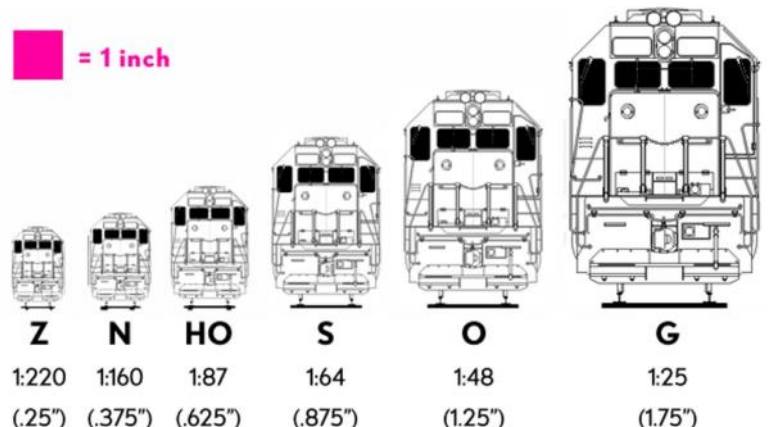
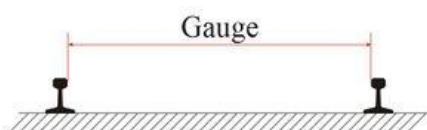
All the modern garden variety rail used by most modelers is a standard size track, 1.75 inches (45mm). Thank you LGB. Gauge one was standardized, according to Model Railways and Locomotive magazine of August 1909, at 1.75 in (44.45 mm). An exact 1:32 scale would yield 1.766 in (44.85 mm) for standard gauge prototype.

1:32 scale is proportionally standard rail size, however, some manufacturers decided to go with 1:29 scale and so the trains are slightly larger. Many folks use 1:24 scale for a lot of structural modeling because it equates to 1/2 inch to one foot. Easy to craft, and is close enough for "Government work" (model automobile kit are mostly 1:24.)

Bachmann sees the same track as "narrow gauge", so the scale for narrow gauge now changes to 1:22.5. The track doesn't change, but the scale of the equipment does. The size of the equipment almost dwarfs the 1:32 models. Live steam uses the same track, but many modelers use 1:18 as a more convenient modeling form as it is bigger.

We all use the same size track (gauge 1.75") but our scales may be different. Unless you are a rivet counter, and hand lay your track. Then all bets are off! And don't forget all the other scales.

Have I helped confuse you more???



COMMON MODEL RAILROAD SCALES (AND GAUGES)

Savannah Christmas Tour

GGRS will be traveling to Southeast Georgia to visit two of our east coast member layouts on Saturday, December 10th. The Hyde's and Schrock's layouts will be open from 10:00 a.m. to 6:00 p.m. giving you plenty of time for layout visits whether you are traveling east or west.

SCHROCK - The Schrock's Bulldog Junction is an elevated layout under a 30' x 50' pavilion complete with a turn table, scratch-built buildings and 650 feet of track. Joe runs both track and battery powered trains. New additions to the layout include a Farm, Park, Zoo and Rodeo. Their gardens feature many annuals, roses, banana trees and whimsical yard art.

Joe & Mary Schrock

546 Cauley Road East

Dublin, GA 31027

775-772-3367



Savannah Christmas Tour (Cont.)

HYDE — The Hyde's have not one but two indoor G scale layouts. Upstairs, in a space approximately 25' X 40', the layout has 800 feet of track. There are 8 track powered locos running simultaneously among 100 scratch built and/or kit bashed buildings. There are several themed areas including Mt Rushmore, boy scout camp, Halloween block party, Christmas, river front, drive in theater, baseball park, museum, Thomas tank and more. The animation will bring a smile to your face. The second layout is 12'x 24' located in Richard's ground level work shop.

Richard & Beverly Hyde

810 Robin Drive

Pooler, GA 31322

912-748-7553



Savannah's Waterfront Christmas on the River - Some GGRS members will be heading to Savannah on Thursday December 8th or Friday December 9th to see "Savannah's Waterfront Christmas on the River". This three-day festival takes place from Friday, December 9 through Sunday, December 11, 2022 and will feature merry music, handcrafted art, live performances and holiday cheer. Dance and music fill the weekend with Christmas performances.

If you're going to be in Savannah on Friday night and would like to get together for a GGRS group dinner, please go to Sign-up Genius and leave your name and number in your party. Also, please let us know if you have a restaurant suggestion.

<https://www.signupgenius.com/go/30e0949a8af2aa6fa7-savannah>



HOTELS:

Book a hotel early, as Savannah is a very popular weekend destination. While staying in Savannah puts you where the action is, it is also the most expensive choice. Less expensive options can be found near the airport and in the nearby towns of Pooler and Richmond Hill. Use your loyalty points to get the best option for your Savannah experience. Lori Thomas has found the following hotel options:

Microtel Inn & Suites, Pooler (\$125 incl tax for Friday only, \$250 incl tax for 2 nights Fri/Sat)

Best Western Savannah Historic District (\$257 incl tax and parking for Friday only, \$451 incl tax and parking for 2-night Fri/Sat)



OTHER POINTS OF INTEREST WHILE IN SAVANNAH

G Scaler, Ted Gray, runs a Christmas light show featuring his G-scale trains nightly from 6:30 p.m. – 9:00 p.m. (unless it's raining or very windy).

Ted Gray
782 Greenwich Drive
Richmond Hill, GA 31324

Georgia State Railroad Museum -
 Located in Tricentennial Park, Georgia State Railroad Museum is a beautiful National Historic Landmark located at the old Central of Georgia Railway Savannah Shops and Terminal Facilities. With a fully operational turntable, you have the chance to explore historic railcars, experience the handcar, and go on guided tours. Open seven days a week from 9:00am to 4:00pm.
 - 655 Louisville Rd., Savannah, GA 31401
 - Ticket Price: \$15 per adult, \$8 per child (age 2 to 12)



It is right across from the Savannah History Museum, located in the Central of Georgia Railway Station. Between the two is Tricentennial Park, where Patriot forces failed to take Savannah during the American Revolution. Reconstructed redoubt is free to tour.

Savannah Belles Ferry - Get a unique perspective of Savannah's downtown by going offshore. The Savannah Belles Ferry system provides free passage across the Savannah River between downtown's riverwalk and Hutchinson Island, home of the **Savannah Convention Center** and **Westin Savannah Harbor Golf Resort & Spa**. Operating hours: 7 a.m. to 10 p.m. seven days a week.



Tybee Island
Fort Jackson and Fort Pulaski
Riverwalk
Pirates House
Old Savannah Trolley Tours
Bonaventure Cemetery
All the historic squares of Savannah
SO MUCH TO DO !!!!!!!

Jesse Murrah said this about Savannah:

By the way, the museum in Savannah is great! I have stayed right next to it there for a couple of weeks for "work". There is a really nice Residence Inn which is literally right outside the back gate, a Fairfield Inn is about 100 yards away, and Springhill Suites is across the street. These are all on the Marriott website listed under "Downtown/Historic District" and they have reasonable rates (for Savannah) with some discounts available. The Residence Inn is right next to one of the Revolutionary War battle sites which I enjoy walking around, and they have really cool cottages available for some of the rooms. Just thought I'd add the input. Hope y'all have a great holiday season!



2023 Dues Notice

It's that time of year again! Frost will soon be on the pumpkins, red and yellow leaves will create breathtaking views on scenic train excursions, and GGRS starts collecting family membership dues for 2023. Paying your dues in the fourth quarter of the year, October to December, allows us to plan our budget more accurately, plan for our annual business meeting in January, and compile our Membership Photo Directory timely.

Just like fast-food restaurants' signs stating their meal numbers have changed recently, note that the contact for paying dues for 2023 has changed recently. The new Membership Coordinator is Ginny Manning to whom you will make payment. Look for details in an email from late September and in notices of future newsletters.

How much does a standard Locomotive weigh?

One locomotive weighs about as much as:

- A. 108 Hippos
- B. 447 Giraffes
- C. 5000 Chimpanzees
- D. 3 Blue Whales

(Answer on page 21)

Do you know of anyone in the Metro who'd be interested in helping run the garden trains during the Atlanta Botanical Garden's "Garden Lights" event that runs from the middle of November through the middle of January? The pay is pretty good, but I imagine one would want to be fairly close in...

Contact . doug_alexander@bellsouth.net

The Rip Track

**Need Repairs? Supplies?
Buy Good Stuff from
our Members**

Members with Garden, Train, or other related items to sell (new or used) can submit their items for inclusion in "The Rip Track". Send information to the editor for the next issue. Items will run for a single issue, unless the editor is notified to repeat the item (Quality photos appreciated). Members with related business advertising may also submit ads. These will run continuously until policies change or notice is given. Non-member publishing by arrangement. (Contact Editor for details.)



Every era, every scale!
Trainz.com
Downsizing?
Sellmytrains.com
1-866-285-5840

SAVE THE DATE
NOVEMBER 12, 2022
 10:00 am to 4:00 pm



CORDELE RAIL FAN Festival

-  **Children's Activities**
-  **Craft Vendors**
-  **Model Railroad Club Displays**
-  **SAM Shortline Shuttle Train Rides**

CORDELE MAIN STREET
 105 E 9th Ave
 Cordele, GA 31015
 229-276-2902



Emil Decker's
STICKS
 +
STONES

**"The truth is not
in the touch of a
stone, but in what
the stone tells
you."**

Rene Denfeld

sticksNstones@weegrr.com

Train Installations, LLC

Woodstock, GA 30188

770-597-0038

dave@traininstallations.com



Check out our online store and updated website at www.traininstallations.com

We can help you with any part of your model RR project no matter what scale it is.

- Layout planning and CAD drawings
- Custom bridges
- Overhead RR systems
- Model kit assembly
- Train storage shelving

Thanks - Dave 770-597-0038

Now is a better time than ever to distract yourself with the hobby of model railroading! Let us know how we can help.

Engineer's Wish List

Embroidery Design & Gifts
by On-Time Designs, Inc.

Sally Bando | 404.550.4816 | sbando@comcast.net

Machine embroidery designs & themes on shirts and gifts.
Prices upon request. Company and group projects welcome.

Embroidery Design and Gifts
Georgia Garden Railway Society
Club Shirts
Each Shirt will have the club logo
on included in the price.

Contact Sally for other designs



Large Scale Live:

Split Jaw is proud to sponsor Large Scale Live, now beginning their 3rd season Saturday Sept 24 at 7:00 PM eastern.

<https://largescaletrains.com/>

Your place for all things Large Scale Trains related and more!

Men's	S	M	L	XL	2XL	3XL	Price
Grey Pocket t-shirt							\$10.00
Carbon or Burgundy Polo							\$20.00
Carbon or Burgundy Pocket Polo							\$20.00
Long Sleeve Denim							\$22.00
Short Sleeve Denim							\$22.00
Name on Men's Shirt				(Specify Name)			\$5.00

Ladies	XS	S	M	L	XL	2XL	Price
Grey T-shirt							\$10.00
Carbon or Burgundy Polo							\$20.00
Long Sleeve Denim							\$22.00
Name on Ladies shirt				(Specify Name)			\$5.00



Train Slang: How much Railroad Slang do you know? (Cont....)

Gonna go through the A.B.C.'s of Railroad Slang in the next few issues, 20 at a time.

- Skipper: Engineer
- Sleeper: A cross tie
- Slip Car: A carload of bananas
- Smooth: A ten cent tip
- Snoozer: A Pullman car
- Snuzzled: Drunk
- Soup: Water
- Spur: A dead end track
- Stoker: Locomotive Fireman
- Straw Boss: Section gang foreman
- Swellhead: Engineer or Conductor
- Tank: Locomotive Tender
- Tallow Pot: Locomotive Fireman
- Tea Kettle: Old leaky steam Locomotive
- Tin Can: A Tank Car
- Tin Hat: A railway official
- Toothpick: A railroad tie
- Torpedoes: Beans
- Ukulele: A short-handled shovel
- Water Bottle: Water Filled tank car behind the tender

How much does a standard Locomotive weigh?

Who the heck has the time to weigh and count zoo animals anyway??

The answer is . One locomotive weighs about as much as 108 hippos.

Tier 4 locomotives weigh a whopping 432,000 pounds — the same as 108 hippos weighing in at 4,000 pounds each. These 6-axle engines have 4,400 traction horsepower and can reach a maximum speed of 70 miles per hour pulling thousands of tons of freight.

Don't ask me how fast a hippo can pull that weight. Terry might know. He has a Serengeti Zoo on his layout.

Yard Hostler

Great time at Mineral Bluff. Great time coming up in Savannah. Annual Meeting in January at the Provino's where we met last year. More info on our usual Christmas Train Swap in upcoming editions. Looking forward to a great end of the year, and an even greater start of the next. Till next issue, Highball it down the line !!!!

Emil Decker, Editor, GGRS Gazette
480 Grizzle Rd., Dawsonville, GA 30534

eldecker@windstream.net

