



# GGRS Gazette

## September, 2021

Official Newsletter of the Georgia Garden Railway Society

### President's Message



# 1:1 Train Ride

## Great Fun

By Pam Williamson. Photos by Thomas Conrad, Pam Williamson, & Linda Decker

The day before the GGRS 1:1 train ride on The Azalea Sprinter in Nashville, GA we had the opportunity to view Joe & Mary Schrock's Bull Dog Junction in East Dublin, GA. The Schrock's have recently relocated to South Georgia from Nevada, where their layout was featured on the cover of *Garden Railway* June 2017.



Hello garden train friends!

It was so much fun seeing everyone who attended our activities in June, July and August. The potluck gatherings have been delicious and we have welcomed several new members to GGRS! A big thank you goes to our hosts the Yarbrough's, Manning's and the Lees. Also thanks to the outing organizers. It sounds like everyone enjoyed the excursions.

Don't forget to sign up to share you g-scale train enthusiasm at the Aug. 28, Sept. 11, or Oct 2/3 events or as a host in 2022. If you want to or know someone that wants to join the board – just let us know. See you very soon!



But before arriving there, a group of us met at the Pickle Barrel Cafe & Sports Pub in Dublin.

### Juliet Foster

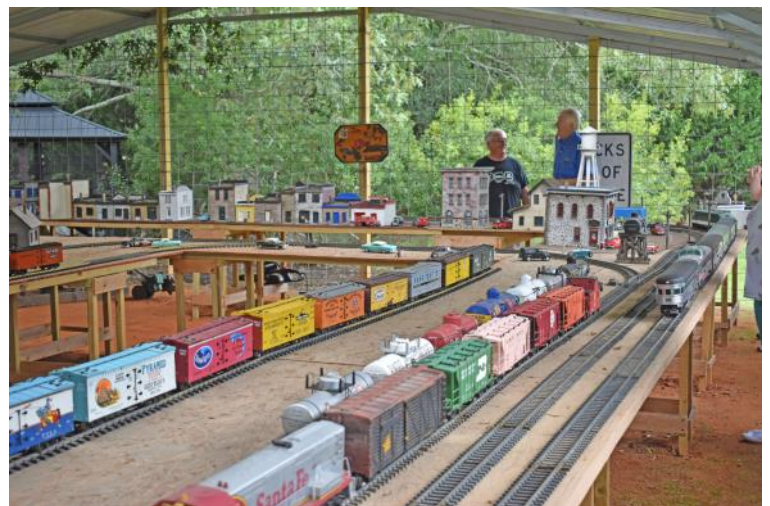
#### In This Edition

President's Message.....	1
1:1 .....	1
Track Warrants.....	10
At the Depot.....	10
Gandy Dancers.....	13
REA Express: Follow-up .....	15
Whistle Stop .....	16
Highballing Down the Track...	18
Rip Track.....	19
Yard Hostler.....	22



Continued on page 2

The Bulldog Junction is an elevated layout under a 30 x 50 pavilion complete with a turn table, scratch-built buildings and 650 feet of track. Joe runs both track and battery powered trains. During our visit, he was running 1 battery and 5 track powered engines.



Continued on page 3

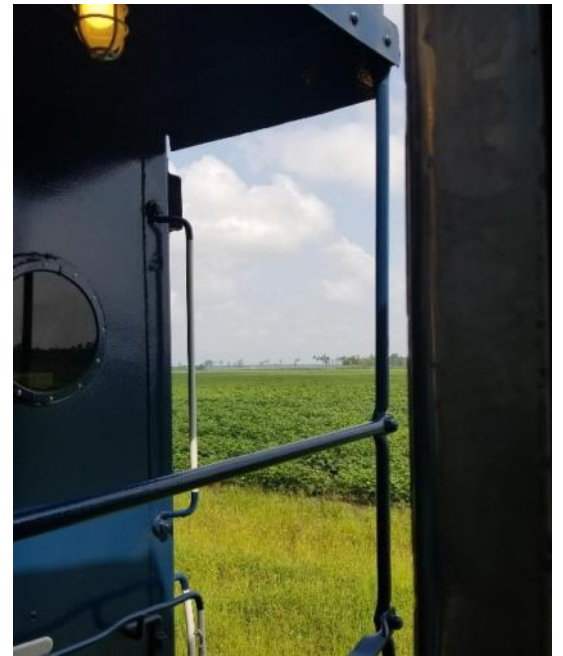




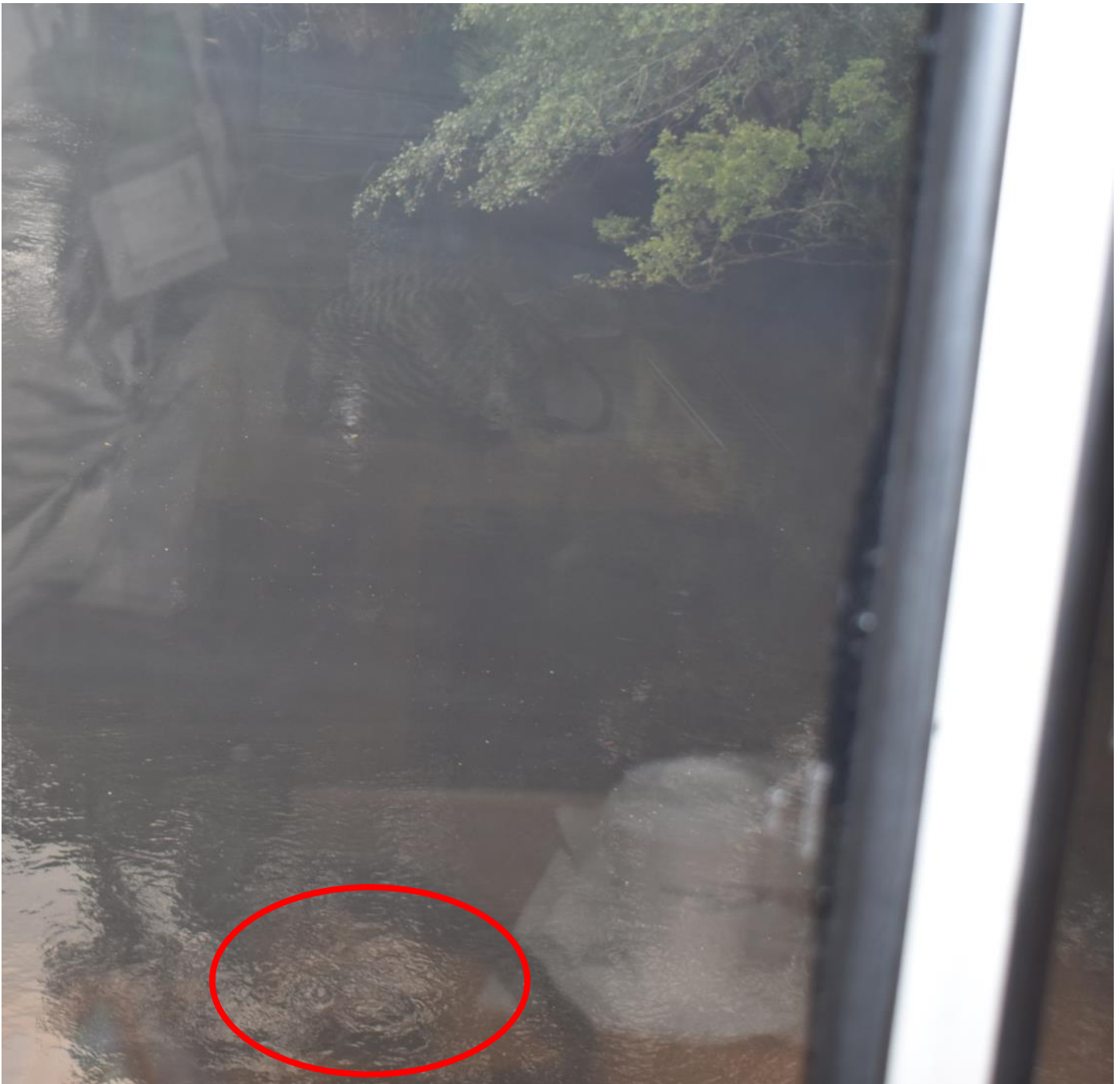
Mary took us for a tour of their gardens which feature many annuals, roses, banana trees and whimsical yard art.



Driving South to Nashville, .....Georgia that is, we boarded the train at the Farmer's Market, where the Caterparrott Railnet's Azalea Express awaited us. Although the main office for Caterparrot Railnet is in Madison, GA, their operations are in Nashville.



We traversed south Georgia terrain, and crossed over Ten Mile creek, Five Mile creek, and finally over the Alapaha river.



While on the bridge, a very large turtle, probably an alligator turtle, swam by. We saw all types of fields planted with cotton, corn, beans, even tobacco. When we didn't see Roy, we feared he had jumped the train to pick some tobacco, but actually he had traveled to the end of the train to check out some equipment. At Buddy Lake, we stopped, then returned back down the track to Nashville. We passed a road crew hired by Caterparrot, (*cheap alien labor*), who safely left the track and watched as we passed.

*After the event, Ted received this email from the owners:*

Hey Ted,  
Thanks so much for the kind words and for you organizing your group to come down and ride! Jamie and I appreciate you, look forward to seeing you and your group again one day!

Chris





More fun was to be had after we left Nashville. Just up the road in Tifton, we met at the Agrirama. This site is supported by the Abraham Baldwin Agricultural College, (ABAC). It consists of several museums, log cabins and other buildings which were moved on site. It is a living history village with craftsmen demonstrating at various times, and an 0-4-0 Vulcan locomotive

pulling link-pin passenger cars. Most of the on-site help are unpaid volunteers from ABAC, and boy did we time this trip just right. There were printing presses, a black smith shop, and turpentine still, all in operation on the day of our arrival.





Built in 1917, the steam engine was purchased by the Hardaway Contracting Company of Columbus, GA in 1923.

The Montezuma Railroad Depot was built between 1895 and 1905, and was a "prefab" building - used by early railroads to keep up with the rapid pace of railroad expansion. The Depot was donated to the museum by Seaboard Coast Line. The Depot was restored on site and includes artifacts that would typically populate freight warehouse space: waiting rooms, ticket offices, telegraph office, and a water tower outside.



Representative of the times, here are the two waiting rooms of the depot.

On the left is a very sparse side entrance room for blacks, while on the right of the depot is a larger - front entrance - room for white customers.







Once a year, a crew gathers to distill turpentine from pine pitch, gathered all year long. (One day, and we hit it just in time.) After cooking down the pitch in a still, the fire was extinguished. Then boiling hot turpentine is released, filtered through cheese cloth, and collected in a vat. Finally, it is laddled into cans and barrels. These navel stores are used to



manufacture soap, paint, varnish, lubricant, linoleum, and roofing materials. The final processing is done in a single day, usually in April due to the heat, but with the pandemic, it happened on the day we arrived. You could buy a gallon can at the General Store.



## Track Warrants

Event	Location	Date	Status
SER Convention	Hilton Hotel Greenville, SC	Sep 9 - 12, 2021	Rescheduled
The Model Train Expo	Chatsworth Depot	Sep. 11, 2021	Outdoor Display
NO GGRS September Meeting	<b>With the Chatsworth Depot and Model Train Shows so close, we</b>	<b>decided to let</b>	<b>those count for Sep.</b>
SER Convention "Swamp Rabbit Express"	Greenville, SC <a href="http://www.swamprabbitexpress.org">www.swamprabbitexpress.org</a>	Sep 9 - 13, 2021	You can still sign up and attend
L&N Convention	Hilton Garden Inn, 24 Liberty Drive, Cartersville, GA	Sep 16 - 18, 2021	<a href="http://www.Inrr.org">www.Inrr.org</a> to register
Atlanta Toy and Model Train Show (Terminus Chapter)	4764 Cobb Parkway NW, Acworth, GA (VFW Post)	Sep 25, 2021 9 a.m. - 2 p.m.	One day
Model Train Show 2021	Clarence Brown Convention Center, Cartersville, GA	Oct 2 - 3, 2021	<a href="http://www.themodeltrainshow.com">http://www.themodeltrainshow.com</a>
Piedmont Pilgrimage Weekends	Various: Don't miss these opportunities to see all scales throughout Georgia.	Oct. 23 to Nov. 21, 2021	<a href="http://www.piedmontpilgrimage.com">http://www.piedmontpilgrimage.com</a>
GGRS October Meeting	Phil and Barb Jones 8084 Allerton Lane Cumming, GA	Oct 09, 2021	In Planning Stage
GGRS November Meeting	North Georgia Live Steamers 1632 Centennial Olympic Parkway NE Conyers, GA	Nov 20, 2021	Picnic, Mtg. & Ride 1:00 - 4:30
January Annual Business Meeting & Luncheon	Provino's Restaurant 440 Ernest W Barrett Pkwy NW #1 Kennesaw, GA	Jan 8, 2022	\$25 value RR Steal My Gift Exchange Game
GGRS May Meeting Southside Atlanta Consortium 2022	Multiple: At least 4 ! Peachtree City and outlying area.	May 2022	In Planning Stage
GGRS Apr 2022 Meeting	Dennis and Ellen Bass 1972 Lansbury Court, Snellville, GA	Apr. ? 2022	In Planning Stage

### At the Depot

### CHATSWORTH DEPOT

500 N. FIRST AVE.  
CHATSWORTH GA 30705

**GPS: N 34°46'04.6"N 84°46'03.5"W**

Chatsworth Depot, located near the Wright Hotel, was built in the early 1900s. It contained two waiting rooms, an agent's office, an express and baggage room, and a freight room. In 1904, the Louisville and Nashville railroad system ran from Cincinnati, Ohio to Etowah, Tennessee. In order to complete a direct line to Atlanta, the L&N railroad system began laying tracks from Etowah south. In 1905, tracks were laid through Murray County. The railroad employed many Murray County residents, and trains would stop daily to transport residents who were traveling to and from Cartersville and other points. President Roosevelt once spent a night in his private car at the depot on his way to Warm Springs for polio therapy.

## Model Train Expo Returns to the Chatsworth Depot September 11

The Chatsworth Depot is happy to announce the return of the popular Model Train Expo. This event, like most last year was cancelled, disappointing many. The Model Train Expo has been one of the more popular activities hosted by the Whitfield-Murray Historical Society at the Chatsworth Depot. We feel the excitement building in anticipation of the return for 2021!

Operating model trains, of all sizes, will be running inside and outside the depot, located at 219 North First Avenue in downtown Chatsworth. The 2021 event will feature a return of the outdoor models of Georgia Garden Railroad Society (weather permitting) running 1/29-1/22 scale trains designed specifically for outdoor use, Piedmont Division of the National Model Railroad Association displaying a well detailed 4X5 foot indoor railroad. Local rail enthusiast and educator, Kevin Henry, will have a ride on train that he built, operating for young and old train fans to ride. The depot's own trains, operating inside the depot, includes Ed Campbell's HO railroad that has been recently refurbished and Stan Rogers' G-scale railroad. The very popular Big Blue Train will be giving train rides to all visitors. Kids from 1 to 100 will love all the moving trains!

Vendors for the 2021 Model Train Expo include the return of train themed embroidery clothing for kids and adults, Crowe Railroad Art. featuring prints from local artist Frank Crowe, and a new vendor from Braselton, Georgia with model trains of all scales and rail related items for sell.

The historic 1905 Louisville and Nashville Depot is the oldest public building in Chatsworth. It is listed on the National Register of Historic Buildings. A caboose, built in 1960, sits behind the depot. The caboose restoration, inside and out, was completed in 2020. Tours of the depot and caboose will be available from 12-5 pm.

Free admission to model trains, train related vendors, & tours are provided complements of Whitfield-Murray Historical Society's 2021 business partners: Peeples Funeral Home, Murray County Elected Officials, Captain D's, Krystal, Bojangles, Bradley's Ace Hardware, and Dr. Robinson. The Chatsworth Depot is able to stay open and bring quality programs to our area, like The Model Train Expo, only by donations, as we receive no government funds or other incomes. Your donations while participating in the events will always be appreciated

The Model Train Expo will open to the public at 12:00 noon on Saturday, September 11, and will remain open until 5:00pm that same date. Come on down to the depot, bring your family and friends to enjoy an afternoon of all things dealing with MODEL TRAINS!



Stan Rogers G-scale layout will be operating inside the Chatsworth Depot, the Henry family will be proving rides on their 1 1/2" scale train, the Chatsworth Depot will be running rides on the Big Blue Train and GGRS will be showcasing an outdoor G scale free form layout. Additionally, vendors will be on hand selling model trains, train memorabilia, and railroad themed clothing for adults and children. The Depot will be the place to be!

GGRS is setting up a club sponsored layout for the Model Train Expo on the front lawn of the Chatsworth Depot on September 11th. The ad hoc design will be set up the morning of the event and packed up late that afternoon. Rather than pull the trailer to Chatsworth, we will transport loose track, engines, rolling stock and limited buildings in a couple of pickup trucks. Everyone is encouraged to bring their own engines and cars to run and showcase to the visitors. We will have 2 overlapping shifts, morning and afternoon. Since the layout will be constructed on the fly, help is essential in the morning for setup.

Lunch will be served at 11:00 for all exhibitors (you must RSVP for lunch so they have an accurate headcount).

Nobody knows what the layout will look like, but I'm sure the kids will love it as long as the trains are moving.

Please sign up to support GGRS on SignUpGenius <https://www.signupgenius.com/go/30e0949a8af2aa6fa7-m0del> or contact John Lank at 770-653-8110 [jclank@bellsouth.net](mailto:jclank@bellsouth.net)



# SOUTHEASTERN RAILWAY MUSEUM

## NEED TO ADD A LITTLE IRON TO YOUR DIET? WE ARE LOOKING FOR VOLUNTEERS!

No matter what your interest or skill set, the Southeastern Railway Museum offers fulfilling opportunities to get involved. Our dedicated volunteers bring transportation history to life, helping visitors appreciate and understand the cultural, technical, and economic impact of transportation in our region – and they have fun doing it! Museum volunteers come from a wide range of backgrounds, range in age from high school students to retirees and include both men and women.

What do our volunteers do? Here are just a few areas: Train crews, Equipment Restorations, Gift Shop, Birthday Party Hosts, Exhibit Construction, Maintenance, and Repair, Landscaping, Tours and Computer Support.

## INTERESTED IN JOINING THE FUN?

To learn more, go to <http://www.train-museum.org> then click on the Support Us button, then Volunteer.

The Georgia Garden Railway Society will be setting up a table to promote encourage, and stimulate interest in Garden Railroading at the 59<sup>th</sup> Atlanta Model Train Show.

**59<sup>th</sup> Atlanta Model Train Show**

**August 28, 2021**

**9:00 A.M. to 5:00 P.M.**

**Gas South Arena, Duluth, GA**

(Formerly known as the Infinite Energy Forum)

If you would like to share your love of Garden Railroading to recruit new club members, please sign up to staff the GGRS Information Booth on Aug. 28th.

Those signed up to volunteer will receive free admission to the 59th Atlanta Model Train Show.



## 59<sup>th</sup> Atlanta Model Train Show



INFINITE ENERGY FORUM

6400 Sugarloaf Parkway • Duluth, Georgia 30097

Saturday, August 28, 2021

9:00 AM to 5:00 PM

Over 300 Tables of Model Trains and Railroad Collectibles For Sale  
Atlanta's Oldest and Largest Model Train and Railroadiana Show

For Dealer Contracts and Show Information  
Contact:

Charlie Miller  
3106 N. Rochester Street  
Arlington, VA 22213  
Phone: 703-536-2954  
Fax: 703-241-7027  
e-mail: rrsnows@aol.com

Tickets available at:  
Eventbrite.com

Large Operating Layouts

[www.gserr.com](http://www.gserr.com)

Follow us on  **facebook**

Next Show Date: January 15, 2022

Present  
This Card  
For \$1.00 Off  
One Admission

## Gandy Dancers

Highlighting Members and their work

**Theme for the Month - Fallen Flags or Color Preferences:** Everyone has a preference for a given prototype, paint scheme, or fallen flag you wish wasn't. What's your preference when it comes to your railroad?



*I noted that I was collecting several cars from a variety of flag lines in a yellow color scheme. So I ran them all together as a "Yellow Bird Express."  
- Terry Manning*



*I'm not sure if C&S actually made this color, but it's my current favorite. - Russ Bundy*



*Here is a picture of the LGB F7 we repainted for David Bergmann in the Seaboard Citrus paint scheme. - Dave Bennett*

*I love the Fallen Flags theme! -*



*L & N...? Guess this must be mine.  
- Roy Williamson*



*Most folks know of the  
Yarborough's favorite flag - Ted Yarborough*

*My favorite color scheme? I have always loved basic  
black steam locomotives..... Hot, oily, rusty, maybe  
with a white stripe down the sides, or on the wheel  
rims. Goes with any hard working short line, new  
purchase yard engine from the factory, or second hand  
from another railroad. Yep. Basic black. - Emil Decker*

## REA Express: Follow-up

I have a follow on note you might want to add about LED Basics to the next newsletter:

Great article by Alan Luebs on LEDs. Some additional thoughts you might want to consider when installing LEDs. I prefer 5mm LEDs for G Scale but 3mm works good sometimes. I also have used SMD 0603 LEDs that are pre-wired for certain situations. You can buy all of these from eBay or Amazon for pennies per LED so I always keep each one around to fit the specific opening or space. For white, I find that the Warm White LED works best.

I am also lazy when it come to calculating resister value and with DC the voltage varies so the LED will change brightness depending on the speed setting. I use a current limiting circuit which costs \$0.38. This chip limits the amperage to 20ma for 5v - 90v. You don't have to worry about what voltage, what resister size, or what color your LED is. Very simple and easy to use. A great article on the details is [http://trainelectronics.com/LED\\_Articles\\_2007/LED\\_104/index.htm](http://trainelectronics.com/LED_Articles_2007/LED_104/index.htm)

You can buy the current limiting circuit, CL2N3-G, at Mouser

<https://www.mouser.com/ProductDetail/Supertex/CL2N3-G/?qs=Plqv86A3fKMm41oemcboMA==>

Michael Carney



Based on the one I saw in Nashville. Not as precise as the Piko kit, but fits my layout nicely. - Russ Bundy

Russ caught site of this moose nearby and photographed it from his tower. [.....Editor]



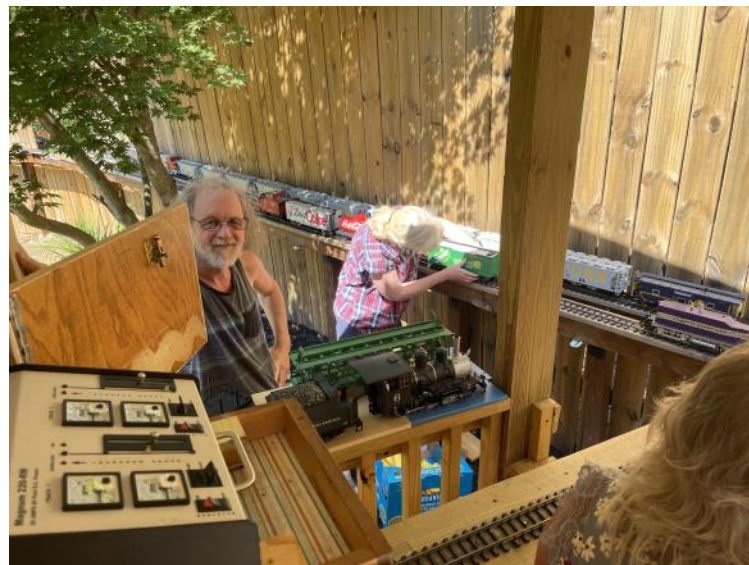
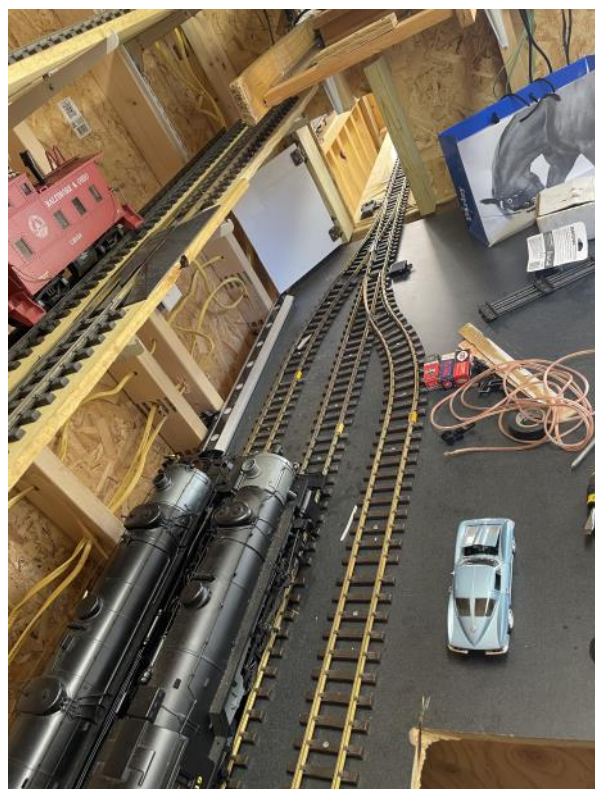
# Whistle Stop



*John went all out and painted a caboose before the August meeting. The Georgia Hysterical Society presented John with a miniature road marker which Commemorated the Event that occurred at the Williamson Junction.*

*Juliet ran her first meeting as president, and did not run away afterwards, so things are looking up for the club.*

*Everyone had a great time in the sun at John and Marge's house.*



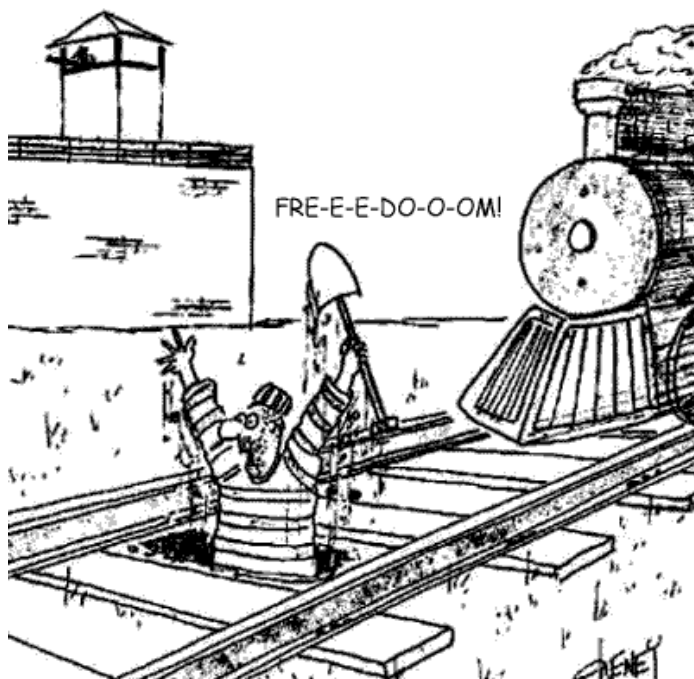




## What is a Fallen Flag?

- A. A railroad absorbed through a merger
- B. A railroad gone bankrupt
- C. A railroad purchased outright by another
- D. A railroad that throws off its herald through reorganization.
- E. All of the above.

Answer on page 21.



## Highballing down the Track



**DENVER GARDEN RAILWAY SOCIETY**  
proudly hosting the  
**37th NGRC ★ JUNE 20-25, 2022**  
VISIT [NGRC2022.COM](https://www.ngrc2022.com)

The 2022 National Garden Railway Convention website is now on line:  
visit at <https://www.ngrc2022.org/>

Colorado 1:1 railroading cannot be beat. We are looking into some awesome opportunities for post-convention group excursions you won't want to miss. Stay tuned for more details.

## The Rip Track

**Need Repairs? Supplies?  
Buy Good Stuff from  
our Members**

Members with Garden, Train, or other related items to sell (new or used) can submit their items for inclusion in "The Rip Track". Send information to the editor for the next issue. Items will run for a single issue, unless the editor is notified to repeat the item. (Quality photos appreciated) Members with related business advertising may also submit ads. These will run continuously until policies change or notice is given. Non-member publishing by arrangement.  
(Contact Editor for details.)



If you need signage for your railroad ... something like a store sign or billboard, consider wood or plastic engraving. I can do a lot of custom work at a



reasonable price. Lettering, images, You imagine it, and I can probably laser carve it.

Custom carved stonework for your RR., Garden stones, Pet Memorials. Deep etching provides years of enjoyment. Let everyone who visits your railway know you are a proud Georgia Garden Railway Society Member.

**Your shirt is dirty! Get a new one !**

Engineer's Wish List

Sally Bando | 404.550.4816 | sbandogeorgia@comcast.net

Machine embroidery designs & themes on shirts and gifts. Prices upon request. Company and group projects welcome.

Embroidery Design and Gifts  
Georgia Garden Railway Society  
Club Shirts  
Each Shirt will have the club logo on included in the price.



Contact Sally for other designs

Men's	S	M	L	XL	2XL	3XL	Price
Grey Pocket t-shirt							\$10.00
Carbon or Burgundy Polo							\$18.00
Carbon or Burgundy Pocket Polo							\$20.00
Long Sleeve Denim							\$22.00
Short Sleeve Denim							\$22.00
Name on Men's Shirt	(Specify Name)						\$5.00
Ladies	XS	S	M	L	XL	2XL	Price
Grey T-shirt							\$10.00
Carbon or Burgundy Polo							\$20.00
Long Sleeve Denim							\$22.00
Name on Ladies shirt	(Specify Name)						\$5.00

[sticksnstones@ wegrr.com](mailto:sticksnstones@wegrr.com)



## Train Installations, LLC

Woodstock, GA 30188

770-597-0038

[dave@traininstallations.com](mailto:dave@traininstallations.com)

### Did you miss me at the National Convention in Nashville?

No problem....Check out our online store and updated website at [www.traininstallations.com](http://www.traininstallations.com)

Think about other ways or things we can help you with while we are stuck at home over the next few weeks including.

- Layout planning and CAD drawings
- Custom bridges
- Overhead RR systems
- Model kit assembly
- Train storage shelving

Now is a better time than ever to distract yourself with the hobby of model railroading! Let us know how we can help.

**Thanks - Dave 770-597-0038**



## 48" PRATT TRUSS \*\* Our Best Value Bridges



The new 48" PRATT TRUSS, brings you sturdy, lightweight and durable all-metal bridges for nearly the same price as plastic.

Available in two versions: No walkways (Our lowest price 48" bridge), and WITH Walkways for added realism.

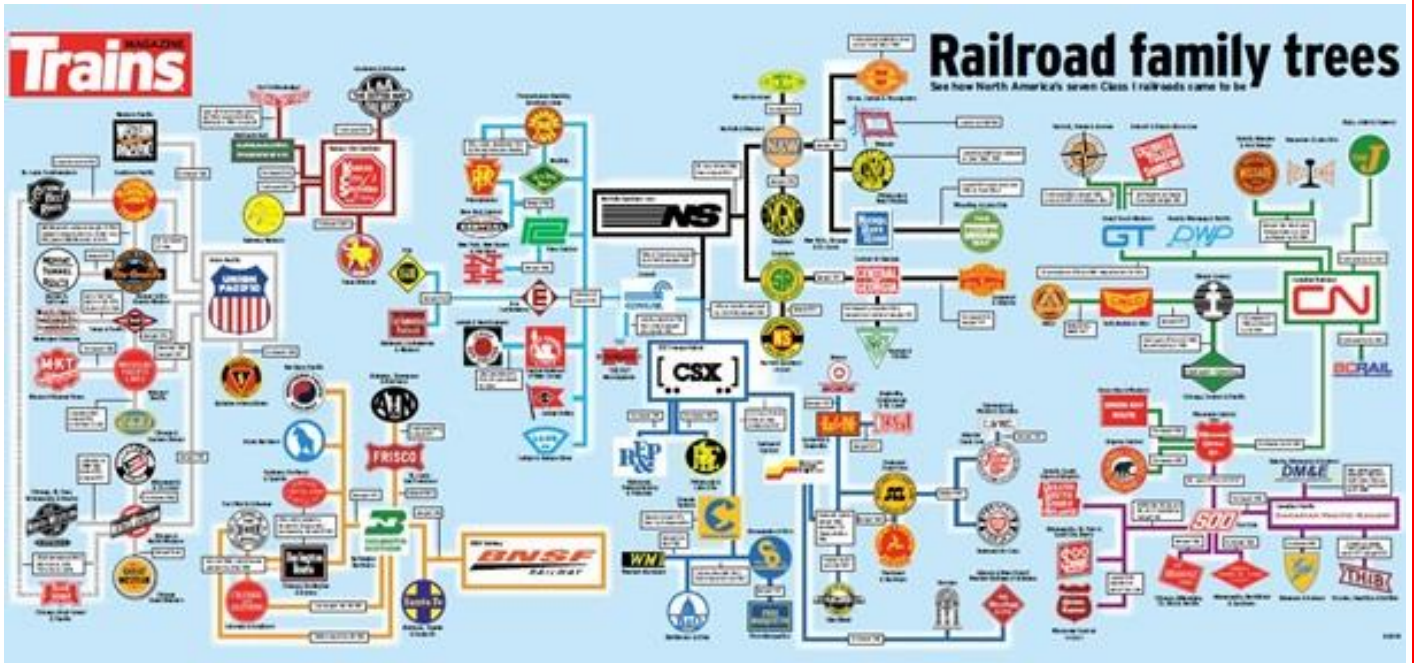
<https://www.railclamp.com/>

**Split/Jaw**

## Fallen Flags

**E. All of the above.** The term "Fallen Flags" describes those railroads whose corporate names have been dissolved through merger, bankruptcy, or liquidation. At one time the United States boasted nearly 140 Class I's. Now, not so many. Trains.com sells an interesting poster that shows all previous companies that have subsequently become an ancestor to one of our current class 1 railroads.

Recently, some of the class 1 railroads have repainted some of their locomotives in "Heritage" colors bearing emblems of their past parentage. Often, these units serve on lines they covered so many years ago. As part of its 30th anniversary celebration in 2012, NS painted 20 new locomotives in the color schemes of predecessor railroads. The commemorative units quickly became known as NS' Heritage Locomotives and a grand show was staged at Spencer, NC.





## Yard Hostler

1:1 is always fun, so we leave you with a few more shots of the gang on the train. The Agrirama was quite educational as well. The year is bound to cool off as we head into fall.....maybe.....hopefully.....

September and October are full of opportunities to help the Society promote model railroading and our club, specifically, by helping out at the shows. I know its hard to nail down folks, and some will come help even if they don't sign up or list a specific time, but the organizers of the event, and John Lank, our Event's Coordinator would sleep easier knowing just who is going to be there. Be a good member and sign up!!

Emil Decker, Editor, GGRS Gazette  
480 Grizzle Rd., Dawsonville, GA 30534

[eldecker@windstream.net](mailto:eldecker@windstream.net)

