

Solaris 37



Asia



# SOLARIS 37

By JAVIER SOTO ACEBAL & SOLARIS DESIGN TEAM





QTR – Quality Time Remaining

# 1) Easy Sailing

life at sea discipline

# 2) Training

Art of Sailing specific method

# 3) Fast&Easy sailing cruisers

personalization's  
furling boom  
electric winches rewind  
self tacking jib  
furled sails

**GLOBAL WARMING ACT**  
Limited CO2 emissions  
Environmental friendly  
Long range voyages







# SOLARIS 37

By JAVIER SOTO ACEBAL & SOLARIS DESIGN TEAM





mistermax

# SOLARIS 37

By JAVIER SOTO ACEBAL & SOLARIS DESIGN TEAM

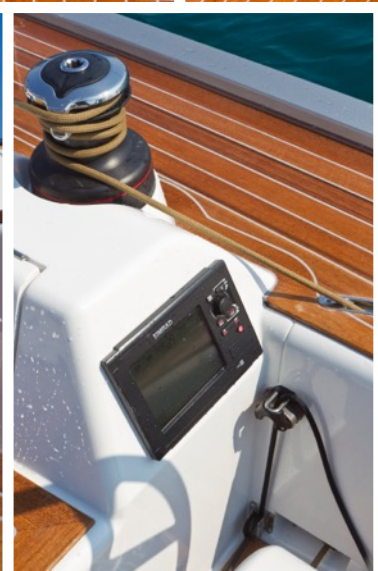
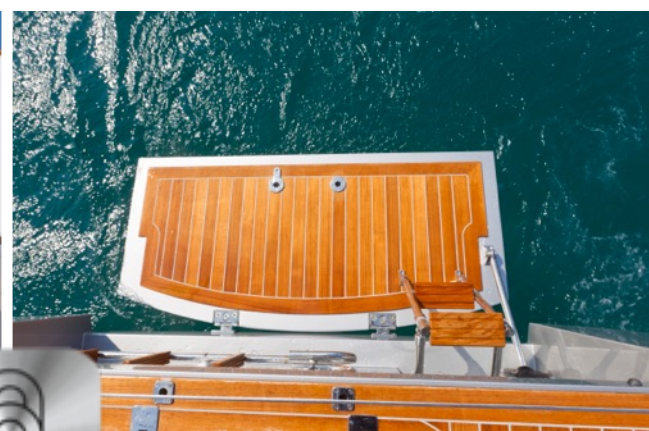
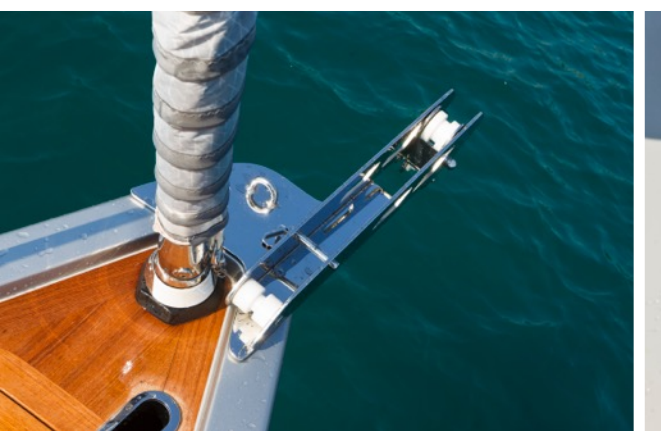


# SOLARIS 37

By JAVIER SOTO ACEBAL & SOLARIS DESIGN TEAM











# SOLARIS 37

By JAVIER SOTO ACEBAL & SOLARIS DESIGN TEAM





# SOLARIS 37

By JAVIER SOTO ACEBAL & SOLARIS DESIGN TEAM





# SOLARIS 37

By JAVIER SOTO ACEBAL & SOLARIS DESIGN TEAM





# SOLARIS 37

By JAVIER SOTO ACEBAL & SOLARIS DESIGN TEAM





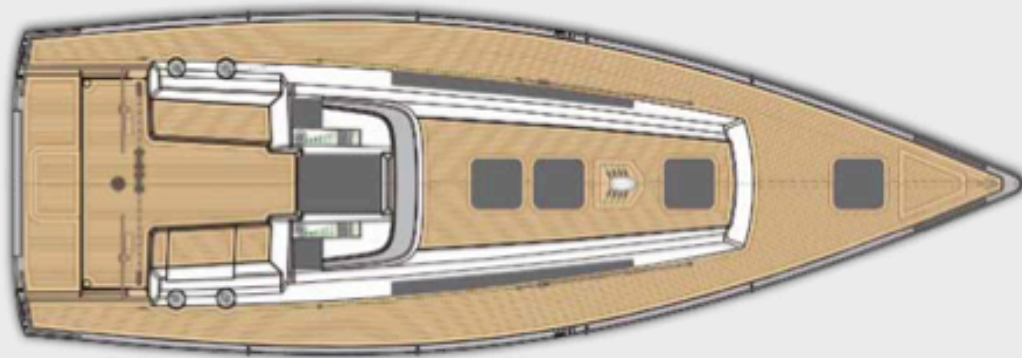
# SOLARIS 37

By JAVIER SOTO ACEBAL & SOLARIS DESIGN TEAM

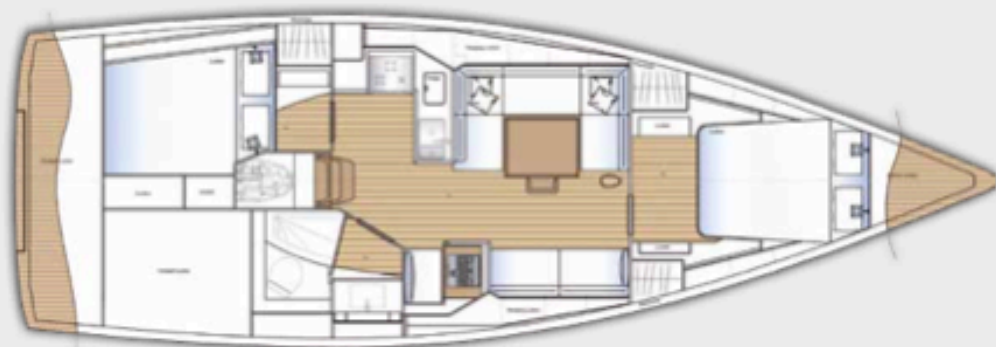




DECK PLAN.



INTERIOR PLAN.



## SOLARIS 37'

|                         |   |
|-------------------------|---|
| LOA                     | 11.40 M                                   |
| LWL                     | 10.45 M                                   |
| BEAM                    | 3.85 M                                    |
| DRAFT                   | 2.40 - (2.10 OPTIONAL) M                  |
| DISPLACEMENT            | 7,400 Kg                                  |
| BALLAST                 | 2,700 Kg                                  |
| SAIL AREA               | 82 (OPTIONAL) M <sup>2</sup>              |
| MAINSAIL                | 47 M <sup>2</sup>                         |
| JIB                     | 35 M <sup>2</sup>                         |
| I                       | 13.20 M                                   |
| P                       | 13.40 M                                   |
| E                       | 5.50 M                                    |
| J                       | 4.08 M                                    |
| ENGINE                  | VOLVO PENTA SAILDRIVE 30 (40 OPTIONAL) HP |
| WATER TANK              | 320 L                                     |
| FUEL TANK               | 210 L                                     |
| CE CERTIFICATION        | RINA OCEAN CATEGORY A                     |
| DESIGNER                | JAVIER SOTO ACEBAL                        |
| INTERIOR AND STRUCTURAL | SOLARIS DESIGN TEAM                       |





**EZConcept**

sailing yachts

# Solaris Yachts

sailing fast cruisers

**Research&Design**

Fast and easy philosophy

**Very Hi Quality**

Historical production reputation

**Limited production**

Hand Made in Italy

**Yacht Value**

Solaris Yachts keeps the value in the pre owned market





SOLARIS 37 RTS (Ready To Sail) Price CIF Hong Kong - HK\$ 3.700.000,00



## SOLARIS 37 - RTS - READY TO SAILING

### BASIC BOAT Description

Solaris 37 as per technical building specifications:

The standard version includes:

- 2 cabins and 1 bathroom
- oak interiors with white painted cupboard doors
- oak floorboards with transversal grain
- chart table facing forward
- holding tank for the aft bathroom
- sandwich construction with airex foam core for hull and deck
- composite main- and forebulkhead
- composite chainplates
- all the bulkheads are completely resinbonded to hull and deck without inner mouldings
- cast iron fin and lead bulb (2.4) connected to the hull recess through a coupling flange
- electric anchor windlass 1000W
- Jefa steering pedestals
- 3-burner cooktop
- sea cocks flush to the hull
- painted waterlines and cove stripe, charcoal colour
- all the fixed windows are in double tempered crystal
- stainless steel grabrails on the coachroof
- 6 winches
- 12V batteries with separate starting switch for the engine battery
- white painted perforated aluminum panels for the engine room lining
- LED navigation lights
- stainless steel stemhead with balance gear and stainless steel cleats
- 1 compass on the portside cockpit coaming

### SOLARIS 37 standard OAK INTERIORS

Antifouling (International - Micron grey), including keel lamination

Performance rig with: longer mast, tapered at the top, jib furler Furlex TD and spectra ropes (mainsail + jib + spi/gennaker), snapshackels and backstay in dyneema, shrouds 1x19 (sail plan to fit both the standard keel and the 2.1 draft)

### INTERIOR Description

Galley's worktop in Corian, light colour ("Designer White")

No. 6 blinds and flyscreens, Oceanair

### ENGINE Description

Volvo Penta 40 hp engine model D2-40, price difference with the standard one

Feathering propeller, Max Prop

### WATER SYS Description

Electric toilet for the bathroom, Planus

### COOLING SYS Description

Additional electric fridge with front opening stainless steel door

Air conditioning and heating system for the saloon and the fore cabin. 220V ca power supply. (The heating function will work only when the sea water temperature is above 5°C)

Generator 3,5 kW with its own system and supply system 220V AC, Paguro



## SOLARIS 37 - RTS - READY TO SAILING

### DECK Description

Teak on cockpit floor (grey caulking)

Sprayhood

Cockpit table with teak folding wings and stainless steel fixing base

Upgraded mainsheet winches

Folding gangway in pre-preg carbon fibre, white painted, 2.20 m long, with stainless steel terminals and double fixing socket on deck

No. 2 bags for the halyards in cockpit

No. 2 additional portholes on the coachroof sides, flush mounted (bathroom and aft cabin)

Hydraulic opening bathing platform, including swim ladder, shower and teak, as option on the standard equipment

No. 6 winches model Harken Performa

### STEERING Description

GRP white painted steering wheels, 3 spokes

### RIG Description

Slide switch track at mast and full-batten mainsail gear, Harken

Harken integral backstay adjuster (extra option on the Harken standard)

Cockpit controlled track cars for genoa sheet, price difference with the standard supply

Mainsail cover

Gear for Gennaker and Code, including blocks and one set of sheets

### ELECTRICAL Description

Mastervolt battery charger

### NAV.ELECTR. Description

Raymarine navigation pack including: 3 displays model I70s, autopilot display P70s, EV1- ACU200, LD1, VHF Ray 60 including Raymic second unit in cockpit

eS75 touchscreen multifunction display, Hybrid-touchscreen (7" screen) with WIFI and integrated GPS antenna, Raymarine (including Navionics+ chart "SOUTH CHINA SEA", NAV+43XG). (The external GPS antenna, item 12.06, is advisable)

Raymarine Transponder AIS 700 class B, connected to the multifunction display Axiom Pro / Axiom, including GPS antenna on the pushpit

### ENTERTAINMENT Description

Music system including: Fusion MS-AV755 unit with AM/FM tuner, CD-DVD player, external USB socket. Saloon and cockpit loudspeakers. The Fusion unit can be also controlled via the Raymarine/B&G/Garmin touchscreen displays. (This device, if connected via access-point wi-fi Raymarine, B&G or Garmin, can be wi-fi controlled by a specific APP IOS or Android). Remote control by App Fusion Link via Bluetooth connection and/or external WiFi, not included

### MISCELLANEOUS Description

Mooring pack including: 15kg Delta anchor + 75 meters chain + 6 fenders with fender covers + 4 mooring lines + 1 boat's hook

Launching, mast stepping and tests at sea in Aquileia Sails

Boat shrink wrapping

Shipping to Hkg

Commissioning in Hong Kong





SOLARIS 37 EZC (Easy Sailing) Price CIF Hong Kong - HK\$ 4.500.000,00



# SOLARIS 37 - EZC - Easy Sailing

## BASIC BOAT Description

Solaris 37 as per technical building specifications:

The standard version includes:

- 2 cabins and 1 bathroom
- oak interiors with white painted cupboard doors
- oak floorboards with transversal grain
- chart table facing forward
- holding tank for the aft bathroom
- sandwich construction with airex foam core for hull and deck
- composite main- and forebulkhead
- composite chainplates
- all the bulkheads are completely resinbonded to hull and deck without inner mouldings
- cast iron fin and lead bulb (2.4) connected to the hull recess through a coupling flange
- electric anchor windlass 1000W
- Jefa steering pedestals
- 3-burner cooktop
- sea cocks flush to the hull
- painted waterlines and cove stripe, charcoal colour
- all the fixed windows are in double tempered crystal
- stainless steel grabrails on the coachroof
- 6 winches
- 12V batteries with separate starting switch for the engine battery
- white painted perforated aluminum panels for the engine room lining
- LED navigation lights
- stainless steel stemhead with balance gear and stainless steel cleats
- 1 compass on the portside cockpit coaming

## SOLARIS 37 standard BLEACHED OAK INTERIORS

Electric Bow Thruster mod. Compact Retract CR 70 12V with control on the steering compartment (it requires the option 11.02)

No. 2 additional fixed hull portholes in the Owner's cabin (curtains excluded)

Coppercoat antifouling

Performance rig with: longer mast, tapered at the top, jib furler Furlex TD and spectra ropes (mainsail + jib + spi/gennaker), snapshackles and backstay in dyneema, shrouds 1x19 (sail plan to fit both the standard keel and the 2.1 draft)

## INTERIOR Description

Air conditioning and heating system for the saloon and the fore cabin. 220V ca power supply. (The heating function will work only when the sea water temperature is above 5°C)

Eye-level lockers in the owner's cabin (white painted)

No. 6 blinds and flyscreens, Oceanair

Folding shelf / worktop in the galley (on the right side of the sink)

No. 2 pouf seating for the saloon

## ENGINE Description

Volvo Penta 40 hp engine model D2-40, price difference with the standard one

3-blades folding propeller, Gori (without overdrive function)

NMEA interface to visualize the Volvo Penta engine data in the plotter

## GENERATOR Description

Generator 3,5 kW with its own system and supply system 220V AC, Paguro

## WATER SYS Description

Electric toilet for the bathroom, Planus

Lake kit (grey and black water system)



## SOLARIS 37 - EZC - Easy Sailing

### DECK Description

Teak on side decks (grey caulking)

Teak on coachroof (grey caulking)

Teak on cockpit floor (grey caulking)

Electric winch (single) for the main halyard (starboard), price difference with the standard one

No. 2 electric winches for the genoa sheets, price difference with the standard ones

No. 4 Solimar flush hatches (2 for the saloon + 2 for the fore cabin)

Bimini for the guest's cockpit with snood

Sprayhood

Protection covers for the steering wheels

Protection cover for the cockpit table

No. 2 bags for the halyards in cockpit

No. 4 stainless steel folding cleats, price difference with the standard ones

No. 2 stainless steel folding cleats amidships

No. 2 additional portholes on the coachroof sides, flush mounted (bathroom and aft cabin)

Hydraulic opening bathing platform, including swim ladder, shower and teak, as option on the standard equipment

Additional control for the windlass in cockpit

Painting of the hull with high quality polyurethane products, metallic colours, in place of the white-gelcoat standard finish (hull post curing included)

Carbon bowsprit for Gennaker and Code 0 integrated in the hull

Stainless steel gate in life lines (starboard)

Stainless steel gate in life lines (portside)

Additional porthole for the aft cabin in cockpit, Lewmar

Stainless steel grabrails on the steering pedestals

Recessed track in front of the mast for a selftacking jib including cars and ropes

Removable teak foot rests

### STEERING SYS Description

Carbon steering wheels, in place of the standard ones

### RIG Description

Slide switch track at mast and full-batten mainsail gear, Harken

Additional stopper for the manoeuvres

Lazy Jack

Harken integral backstay adjuster (extra option on the Harken standard)

Cockpit controlled track cars for genoa sheet, price difference with the standard supply

Mainsail cover

Gear for Gennaker and Code, including blocks and one set of sheets

### ELECTRICAL SYS Description

Additional 75 Ah AGM battery for the engine starting

Additional 115 Ah (C20) battery for the services

Inverter 12V 1200W, Mastervolt

LED lighting system instead of the standard one, reading lights for the cabins not included

No. 4 220V sockets (one in each cabin, one in the aft bathroom and one in the galley)

Boom light

Mastervolt battery charger

USB socket (12 Volt), unit price

No. 1 12V socket at the nav. station



## SOLARIS 37 - EZC - Easy Sailing

### NAV.ELECTR. Description

Raymarine navigation pack including: 3 displays model I70s, autopilot display P70s, EV1- ACU200, LD1, VHF Ray 60 including Raymic second unit in cockpit

eS75 touchscreen multifunction display, Hybrid-touchscreen (7" screen) with WIFI and integrated GPS antenna, Raymarine (including Navionics+ chart "Mediterranean and Black sea", NAV+43XG). (The external GPS antenna, item 12.06, is advisable)

Raymarine Transponder AIS 700 class B, connected to the multifunction display Axiom Pro / Axiom, including GPS antenna on the pushpit

### ENTERTAINMENT Description

Music system including: Fusion MS-UD755 unit with AM/FM tuner, slot for i-Pod, i-Phone and Android devices, external USB socket. Saloon and cockpit loudspeakers. The Fusion unit can be controlled via the

Raymarine/B&G/Garmin touchscreen displays. (This device, if connected via access-point wi-fi Raymarine, B&G or Garmin, can be wi-fi controlled by a specific application IOS or Android). Remote control by App Fusion Link via Bluetooth connection and/or external WiFi, not included

### MISCELLANEOUS Description

Mooring pack including: 15kg Delta anchor + 75 meters chain + 6 fenders with fender covers + 4 mooring lines + 1 boat's hook

Launching, mast stepping and tests at sea in Aquileia or Varazze (Italy)

Export Customs Clearance Fees

Boat shrink wrapping

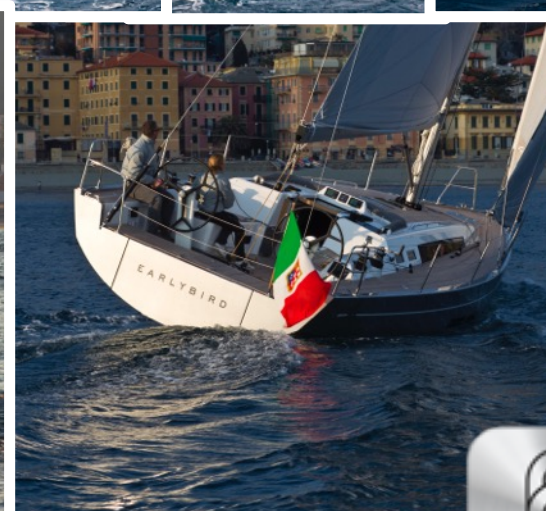
Sails

Boat shrink wrapping

Shipping to Hkg

Commissioning in Hong Kong









[www.solaristyachts.com](http://www.solaristyachts.com)

Enrico Zanella [egz@solarisyachts.com](mailto:egz@solarisyachts.com)