

Solaris 58



Asia



SOLARIS 58

By JAVIER SOTO ACEBAL & SOLARIS DESIGN TEAM
Interior by LUCIO MICHELETTI

With this latest model Solaris surpasses the standards set by itself.

The Solaris 58 combine all the features and innovations to enable a high-performance boat to be easily sailed even with a small crew.

- Recessed track for the self-tacking jib;
- 2 winches at the helmsman's position with which you can control all the lines;
- Clear separation between the guest and crew areas;
- Dedicated life raft compartment with easy access;
- Watertight large-size;
- Functional sail locker;
- Tender garage to stowing the tender and the outboard engine.

The hull shape represents a refinement of the water lines already widely and successfully tested at sea with the Solaris 44, 47, 50 and 55. The weight distribution and the hull volume defines a high performance hull shape even in adverse sea conditions, with high stability coefficients to maintain sail area even in strong winds.

The interior layout with 3 cabins and 2 bathrooms was studied at the yard in a full size mock-up, only with this process can you truly test the ergonomics of all components designed in 3D; the interior layout has a classic galley to port with forward owners cabin. The craftsmanship in the joinery and the assembling of all components at the Yard ensures an enviable standard of quality.

Also the 58 follows the exclusive **Solaris methods developing a strong and stiff monolithic hull.**



SOLARIS 58

By JAVIER SOTO ACÉBAL & SOLARIS DESIGN TEAM

Interior by LUCIO MICHELETTI

QTR – Quality Time Remaining

GLOBAL WARMING ACT
Limited CO2 emissions
Environmental friendly
Long range voyages

1) Easy Sailing

life at sea discipline

2) Training

Art of Sailing specific method

3) Fast&Easy sailing cruisers

personalization's
furling boom
electric winches rewind
self tacking jib
furled sails



SOLARIS 58

By JAVIER SOTO ACEBAL & SOLARIS DESIGN TEAM

Interior by LUCIO MICHELETTI



SOLARIS 58

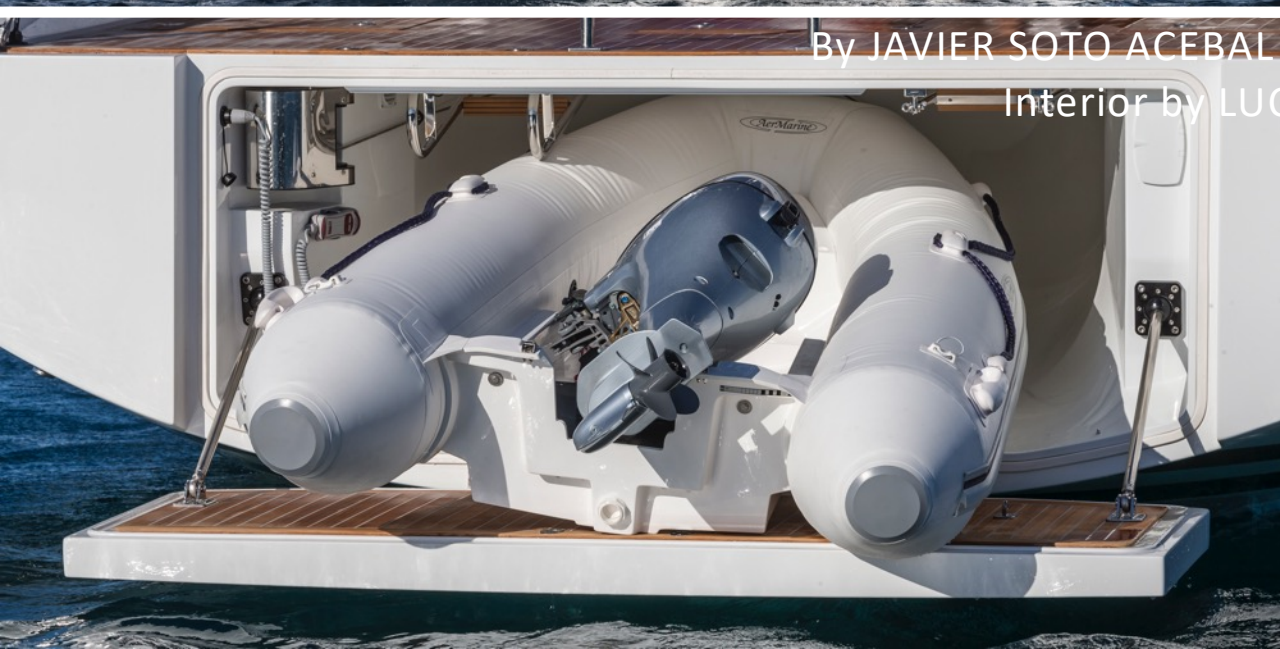
By JAVIER SOTO ACEBAL & SOLARIS DESIGN TEAM

Interior by LUCIO MICHELETTI



SOLARIS 58

By JAVIER SOTO ACEBAL & SOLARIS DESIGN TEAM
Interior by LUCO MICHELETTI





SOLARIS 58

By JAVIER SOTO ACEBAL & SOLARIS DESIGN TEAM
Interior by LUCIO MICHELETTI



SOLARIS 58

By JAVIER SOTO ACEBAL & SOLARIS DESIGN TEAM

Interior by LUCIO MICHELETTI



SOLARIS 58

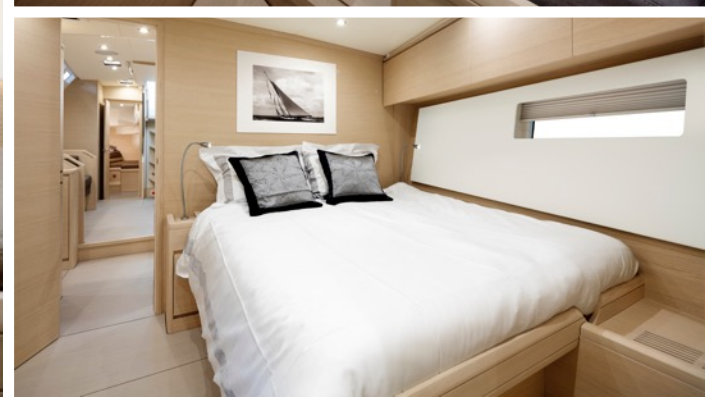
By JAVIER SOTO ACEBAL & SOLARIS DESIGN TEAM
Interior by LUCIO MICHELETTI



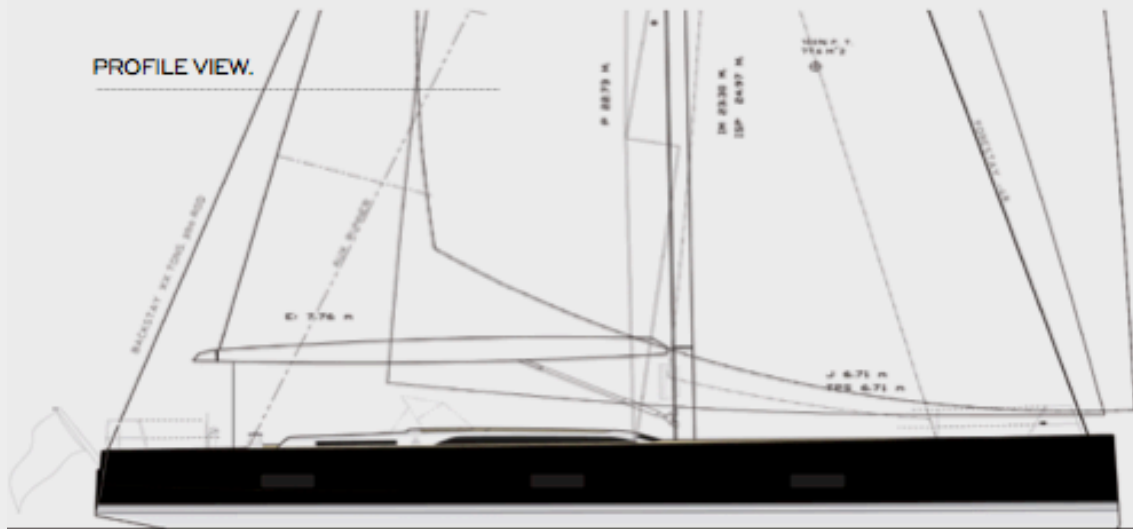
SOLARIS 58

By JAVIER SOTO ACEBAL & SOLARIS DESIGN TEAM
Interior by LUCIO MICHELETTI





PROFILE VIEW.



SOLARIS 58'

LOA	17.45 M
LWL	16.06 M
BEAM	5.05 M
DRAFT	3.20 - (2.85 OPTIONAL) M
DISPLACEMENT	19,500 Kg
BALLAST	6,900 Kg
SAIL AREA	189 M ²
MAINSAIL	97 M ²
JIB 106%	92 M ²
ENGINE	VOLVO PENTA SD 75 (110 OR 150 OPTIONAL) HP
WATER TANK	670 L
FUEL TANK	500 L
CE CERTIFICATION	RINA OCEAN CATEGORY A
DESIGNER	JAVIER SOTO ACEBAL
INTERIOR DESIGNER	SOLARIS DESIGN TEAM
STRUCTURAL	SOLARIS DESIGN TEAM

DECK PLAN.



INTERIOR PLAN.



EZConcept
sailing yachts

Solaris Yachts

sailing fast cruisers

Research&Design

Fast and easy philosophy

Very Hi Quality

Historical production reputation

Limited production

Hand Made in Italy

Yacht Value

Solaris Yachts keeps the value in the pre owned market



SOLARIS 58 RTS (Ready To Sail) Price CIF Hong Kong - HK\$ 13.500.000,00

SOLARIS 58 - RTS - Ready To Sailing

BASIC BOAT Description

Solaris 58 as per technical building specifications.

The standard version includes:

- sandwich hull with airex-like core, deck built with the vacuum bag and infusion system
- oak interiors
- oak floorboards with transversal grain
- couch on the starboard side of the saloon and linear chart table
- composite main and fore-bulkheads
- composite structure with carbon reinforcements and airex-like core
- all the bulkheads are completely resin bonded to hull and deck without inner mouldings
- cast iron fin and lead bulb (3.2 mt draft) connected to the hull recess through a coupling flange
- automatic fire extinguisher for the engine room
- bronze sea cocks, flush to the hull
- holding tank for each toilet
- no. 2 fixed hull windows in double layer tempered crystal
- flush hatches on deck provided with Oceanair blinds and flyscreens
- 4 winches with the ropes running below the deck
- 24V service batteries and 12V starting battery
- boom light
- 2 Mastervolt battery chargers for starting and service batteries
- LED navigation lights, Lopolight
- top loading fridge on the starboard galley + addition top loading fridge on the portside galley
- Dyneema ropes with splices, shackles and snapshackles where necessary
- hydraulic integral backstay adjuster
- transom door with electrohydraulic opening system
- mooring pack
- recessed track for the self-tacking jib

SOLARIS 58 standard OAK INTERIORS

Electric Bow Thruster Mod. Vip 150 24V with control on the steering compartment
Tender garage with longitudinal access way with a watertight composite structure and an electric winch + rollers to drop and lift out the dinghy (2.8 m) of the water
No. 4 additional fixed hull windows, of double layer tempered glass, with interior linings (for the Owner's cabin and the aft cabins)

Antifouling (International - Micron grey), including keel lamination

INTERIOR Description

Air conditioning and heating system with fancoil and thermostat in the saloon and in each cabin. The system has a 40,000 BTU cooling capacity and inverter technology in order to reduce the electrical consumptions. (the heating function will work only when the sea water temperature is above 5°C). 220V AC power supply

Galley's worktop (portside) in Corian

No. 2 removable chairs for the saloon

Split level beds in the portside aft cabin

Bathroom topsides covered in carbon

ENGINE Description

150 hp engine (Volvo Penta)

Feathering propeller, Max Prop

GENERATOR Description

Generator 7 kW - Köhler 7EFKOZD, 1500 RPM - with its own system and 220V ac power supply

WATER SYS Description

No. 3 electric toilets model Planus 24V

SOLARIS 58 - RTS - Ready To Sailing

COOLING Description

Third fridge with 2 drawers, stainless steel

DECK Description

Side decks covered with teak (grey caulking)

Coachroof covered with teak (grey caulking)

Bathing platform covered with teak (grey caulking)

No. 2 electric halyard winches, Performa

No. 2 additional portholes in the cockpit, for the aft cabins

Sprayhood with GRP cover

Folding gangway in pre-preg carbon fibre, white painted, 2.20 m long, with stainless steel terminals and double fixing socket on deck

Protection covers for the steering wheels

Protection cover for the cockpit table

Protection covers for the steering consoles

No. 4 stainless steel folding cleats, price difference with the standard ones

No. 2 stainless steel folding cleats amidships

No. 2 bags for halyard in cockpit with stainless steel bracket

No. 3 Solimar hatches, instead of the Lewmar standard ones

Cockpit table with extension teak wings and storage box

STEERING Description

Carbon steering wheels, in place of the standard ones

Integrated consoles on the steering pedestals for instruments (plotter 9"), compass and different controls

Volvo Penta electronic engine control on the starboard console

ENTERTAINMENT Description

Music system including: Fusion MS-AV755 unit with AM/FM tuner, CD-DVD player, external USB socket. Saloon and cockpit loudspeakers. The Fusion unit can be controlled via the Raymarine/B&G touchscreen displays. (This device, if connected via access-point wi-fi Raymarine or B&G, can be wi-fi controlled by a specific application IOS or Android).

RIG Description

Composite furling boom by Furlerboom (electric system), painted finish. Upgrade to standard aluminium rig. (It requires the selection of item 10.18)

Furlex electric jib furler, TD

4-ways power pack including 2 hydraulic pistons for the backstay and hydraulic vang. Price difference with the standard supply

Electric code 0 furler by Bamar, combined with swivel by Ubi Maior Gear for Gennaker and Code, including blocks and one set of sheets

ELECTRICAL SYS Description

Additional 75 Ah battery for the engine starting

No. 2 additional 115 Ah (C20) batteries for the services, 24V

Inverter 24V 2500W, Mastervolt

NAV.ELECTR. Description

B&G H5000 navigation pack including: 2 display H5000 GFD, H5000 Hydra software, autopilot keypad H500, H5000 power computer, 24V rotary mechanical drive, Triton-2 display for the analogue wind direction, VHF model V50 including second unit H50 in cockpit

B&G multifunction display model Zeus 3 - 9" touchscreen display with integrated GPS antenna (including Navionics+ chart "South China sea", NAV+43XG). (The external GPS antenna, item 12.19, is advisable)

Broad band radar antenna model B&G 4G (installed at mast)

Access Point WI-FI Simrad Go-Free. It allows to control the Zeus multifunction displays through an APP downloaded on a smartphone or tablet

Simrad Transponder AIS NAIS-500 class B, connected to the multifunction display Zeus-3 series, including splitter model Simrad NSPL-500

MISCELLANEOUS Description

Launching, mast stepping and tests at sea in Aquileia

Sails

Boat shrink wrapping

Shipping to Hkg

Commissioning in Hong Kong



SOLARIS 58 EZC (Easy Sailing) Price CIF Hong Kong - HK\$ 15.800.000,00

SOLARIS 58 – EZC – Easy Sailing

BASIC BOAT Description

Solaris 58 as per technical building specifications.

The standard version includes:

- sandwich hull with airex-like core, deck built with the vacuum bag and infusion system
- oak interiors
- oak floorboards with transversal grain
- couch on the starboard side of the saloon and linear chart table
- composite main and fore-bulkheads
- composite structure with carbon reinforcements and airex-like core
- all the bulkheads are completely resin bonded to hull and deck without inner mouldings
- cast iron fin and lead bulb (3.2 mt draft) connected to the hull recess through a coupling flange
- automatic fire extinguisher for the engine room
- bronze sea cocks, flush to the hull
- holding tank for each toilet
- no. 2 fixed hull windows in double layer tempered crystal
- flush hatches on deck provided with Oceanair blinds and flyscreens
- 4 winches with the ropes running below the deck
- 24V service batteries and 12V starting battery
- boom light
- 2 Mastervolt battery chargers for starting and service batteries
- LED navigation lights, Lopolight
- top loading fridge on the starboard galley + addition top loading fridge on the portside galley
- Dyneema ropes with splices, shackles and snapshackles where necessary
- hydraulic integral backstay adjuster
- transom door with electrohydraulic opening system
- mooring pack
- recessed track for the self-tacking jib

SOLARIS 58 standard BLEACHED OAK INTERIORS

Electric Bow Thruster Mod. Vip 150 24V with control on the steering compartment

Tender garage with longitudinal access way with a watertight composite structure and an electric winch + rollers to drop and lift out the dinghy (2.8 m) of the water

No. 2 additional fixed hull windows, of double layer tempered glass, with interior linings

No. 4 additional fixed hull windows, of double layer tempered glass, with interior linings (for the Owner's cabin and the aft cabins)

Coppercoat antifouling

INTERIOR Description

Air conditioning and heating system with fancoil and thermostat in the saloon and in each cabin. The system has a 40,000 BTU cooling capacity and inverter technology in order to reduce the electrical consumptions.

(the heating function will work only when the sea water temperature is above 5°C). 220V AC power supply

Galley's worktop (portside) in Corian

Galley's worktop (starboard) in Corian

Safe, key locked

Crew cabin fitted with a 2 mt bed and including manual toilet, washbasin, lockers and finish

Dishwasher in the galley

Washer-dryer in the aft bathroom, portside

Microwave oven

No. 2 removable chairs for the saloon

SOLARIS 58 – EZC – Easy Sailing

DECK Description

Side decks covered with teak (grey caulking)
Coachroof covered with teak (grey caulking)
Bathing platform ~~table~~ covered with teak (grey caulking)
No. 4 electric halyard winches, Performa
No. 2 additional portholes in the cockpit, for the aft cabins
No. 1 additional Solimar flush hatch for the Owner's cabin including Oceanair blind and flyscreen (for the version with central bed in the master cabin)
Bimini for the guest's cockpit with snood
Sprayhood with GRP cover
Bimini for the steering area with snood
Folding gangway in pre-preg carbon fibre, white painted, 2.20 m long, with stainless steel terminals and double fixing socket on deck
Cushions for the cockpit seats covered with Sunbrella or similar product
Protection covers for the steering wheels
Protection cover for the cockpit table
Protection covers for the steering consoles
No. 4 stainless steel folding cleats, price difference with the standard ones
No. 2 stainless steel folding cleats amidships
Stainless steel gate in the life lines (starboard)
Stainless steel gate in the life lines (portside)
Additional cockpit control for the windlass
Painting of the hull with high quality polyurethane products, metallic colours, in place of the white-gelcoat standard finish (hull post curing included)
No. 2 bags for halyard in cockpit with stainless steel bracket
No. 3 Solimar hatches, instead of the Lewmar standard ones
No. 2 additional Solimar hatches on the coachroof (entrance side)
No. 2 additional Solimar hatches in the galley
Electric retractable mooring winch, Sanguineti 1000W 24V (it requires the selection of the folding cleats forward, mounted on the toerail)
Stainless steel grabrails on the steering pedestals
Dyneema lifelines, Gottifredi Maffioli
Roller to drop and lift out the tender
Removable teak foot rests

ENGINE Description

150 hp engine (Volvo Penta)
Rope cutter on the propeller shaft
3-blades folding propeller, Gori (without overdrive function)
NMEA interface to visualize the Volvo Penta engine data in the plotter

GENERATOR Description

Generator 7 kW - Köhler 7EFKOZD, 1500 RPM - with its own system and 220V ac power supply
Exhaust-water separator for Köhler generator

WATER SYS Description

No. 3 electric toilets model Planus 24V

COOLING Description

Third fridge with 2 drawers, stainless steel

STEERING Description

Carbon steering wheels, in place of the standard ones
Integrated consoles on the steering pedestals for instruments (plotter 9"), compass and different controls
Volvo Penta electronic engine control on the starboard console

SOLARIS 58 – EZC – Easy Sailing

RIG Description

Hall Spars carbon mast and boom including rod rigging, Quikvang solid vang, Harken mainsail switch track, spreaders and boom lights, running rigging, packaging and transport, instead of the standard one. (It requires the selection of item 10.18)

Carbon furling boom by Hall Spars (electric system), painted finish. Upgrade to item 10.04. (It requires the selection of item 10.18)

Rod rigging, instead of the standard wire rigging

Furlex electric jib furler, TD

Additional jammer for the manoeuvres

4-ways power pack including 2 hydraulic pistons for the backstay and hydraulic vang. Price difference with the standard supply

Hydraulic outhaul (it requires the option 10.18)

Electric code 0 furler by Bamar, combined with swivel by Ubi Maior

Folding anchor arm (manually operated)

Gear for Gennaker and Code, including blocks and one set of sheets

Mainsail halyard 2:1

ELECTRICAL SYS Description

Additional 75 Ah battery for the engine starting

No. 2 additional 115 Ah (C20) batteries for the services, 24V

Inverter 24V 2500W, Mastervolt

LED lighting system instead of the standard one

Indirect lighting in the master cabin

Indirect lighting in the saloon

Indirect lighting in the galley

Electric inflator for the tender, 24V

No. 6 220V sockets (in each cabin and in the bathrooms)

USB socket (12 Volt), unit price

NAV.ELECTR. Description

B&G H5000 navigation pack including: 2 display H5000 GFD, H5000 Hydra software, autopilot keypad H500, H5000 power computer, 24V rotary mechanical drive, Triton-2 display for the analogue wind direction, VHF model V50 including second unit H50 in cockpit

Additional H5000 GFD display, B&G

B&G maxy displays: no. 3 30/30 H5000 Triton with aluminium bracket at mast (black anodized)

Broad band radar antenna model B&G 4G (installed at mast)

Simrad Transponder AIS NAIS-500 class B, connected to the multifunction display Zeus-3 series, including splitter model Simrad NSPL-500

Carbon bracket by Hall Spars for the displays at mast (recommended for the carbon mast)

ENTERTAINMENT Description

Flat TV with Banten antenna at mast (saloon, portside)

TV lift mechanism in the saloon

Music system including: Fusion MS-UD755 unit with AM/FM tuner, slot for i-Pod, i-Phone and Android devices, external USB socket. Saloon and cockpit loudspeakers. The Fusion unit can be controlled via the Raymarine/B&G

touchscreen displays. (This device, if connected via access-point wi-fi Raymarine or B&G, can be wi-fi controlled by a specific application IOS or Android). Remote control by App Fusion Link via Bluetooth connection and/or external WiFi, not included

MISCELLANEOUS Description

Export Customs Clearance Fees

Boat shrink wrapping

Sails

Boat shrink wrapping

Shipping to Hkg

Commissioning in Hong Kong





www.solaristyachts.com

Enrico Zanella egz@solarisyachts.com