

BUILT FOR
SAILORS



SINCE 1974



SOLARIS YACHTS BUILT FOR SAILORS SINCE 1974

On the shores of the Venetian lagoon where first the Romans and later the Serenissima Republic left signs of their important seafaring heritage, Solaris Yachts started the construction of sailing yachts in 1974.

Almost fifty years dedicated to the construction of highest quality sailing yachts has honed the skills of the craftsmen that shape today's performance yachts, many of them being of the 3rd generation working for the same shipyard. To guarantee the highest level of quality control, Solaris Yachts produces all yachts 100% in-house, on a site totaling 26.000 square meters, of which 6.000 are a covered production facility.

The strong on-site design and engineering teams are never detached from the craftsmen who shape each of our famous high

performance cruising yachts with incomparable solid and beautiful interiors.

In 2018 the historic Aquileia headquarters were extended giving each new Solaris model a dedicated production line and allowing the development of a wider range of yacht models. The expansion of 10.200 square meters and another building facility dedicated to the construction of yachts up to 120 feet greatly boosted the yard's capacity and efficiency.

It didn't take long for the new facility's unmatched expertise to become known in the industry, resulting in the commissioning of some of the most technically advanced and famous large sailing yachts by major industry players. We take this as a compliment and are proud to be able to raise the bar for the large sailing yacht industry.





QUALITY, CRAFTSMANSHIP AND EXCELLENCE

Every single Solaris yacht ever launched has been built for sailors and the Solaris 111 is the culmination of continuous research, testing and improvement in the way our yachts are designed, engineered and built.

This new flagship has been built using the latest and most advanced construction techniques and materials while never losing sight of safety, stability and comfort.

The quality and the finish of the interior joinery are distinctive features of Solaris,

renowned and appreciated all over the world. The refined selection of exquisite woods combined with an unmatched care for details stand for the level of bespoke craftsmanship that sets Solaris apart from other shipyards.

The final results are unique and unmistakable fittings designed to be functional, comfortable at sea and ultimately durable.

Excellence is what we continuously strive to achieve!



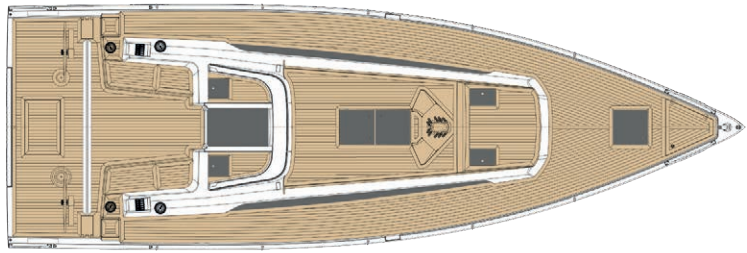


PERFORMANCE CRUISERS RANGE

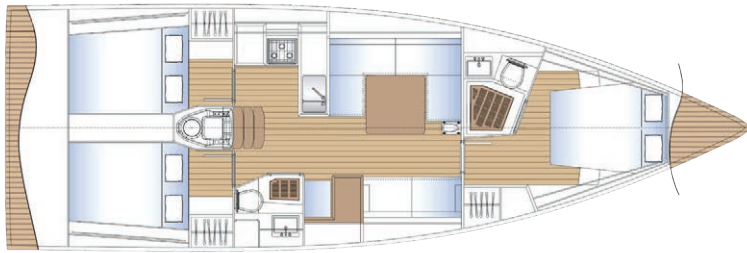


LOA	12.36	M
LWL	11.70	M
BEAM	4.10	M
DRAFT	2.40 (2.00 OPTIONAL)	M
DISPLACEMENT	9,400	KG
BALLAST	3,050	KG
SAIL AREA	100	M²
MAINSAIL	57	M²
JIB	43	M²
P	16.40	M
E	5.75	M
I	16.80	M
J	4.70	M
ENGINE	30 -50 -60	HP
WATER TANK	350	L
FUEL TANK	200	L
CE CERTIFICATION	RINA	
DESIGNER	JAVIER SOTO ACEBAL	
INTERIOR DESIGNER	STUDIO ROSEO	
STRUCTURAL	SOLARIS DESIGN TEAM	

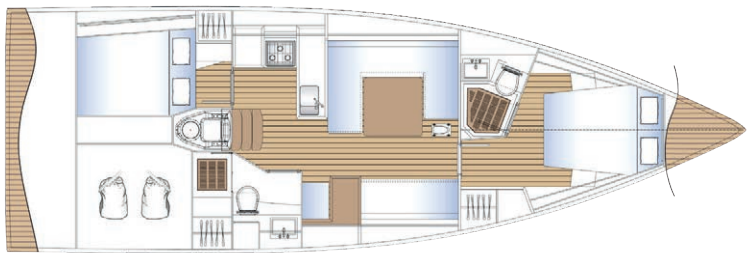
DECK PLAN



INTERIOR PLAN

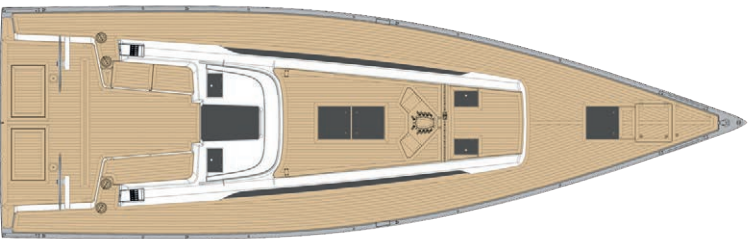


ALTERNATIVE INTERIOR PLAN

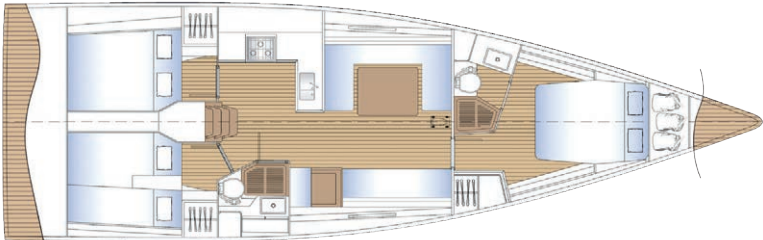


LOA	13.35	M
LWL	12.71	M
BEAM	4.18	M
DRAFT	2.60 (2.40 OPTIONAL)	M
DISPLACEMENT	LIGHT - 9,900	KG
BALLAST	3,600	KG
SAIL AREA	118	M²
MAINSAIL	66	M²
JIB	53	M²
P	18.00	M
E	6.10	M
I	18.40	M
J	5.25	M
ENGINE	VOLVO D2 50 (D2-60 D2-75 OPTIONAL)	HP
WATER TANK	380	L
FUEL TANK	220	L
CE CERTIFICATION	RINA OCEAN CATEGORY A	
DESIGNER	JAVIER SOTO ACEBAL	
INTERIOR DESIGNER	SOLARIS DESIGN TEAM	
STRUCTURAL	SOLARIS DESIGN TEAM	

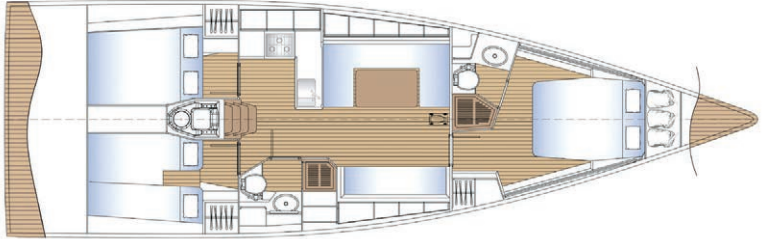
DECK PLAN



INTERIOR PLAN

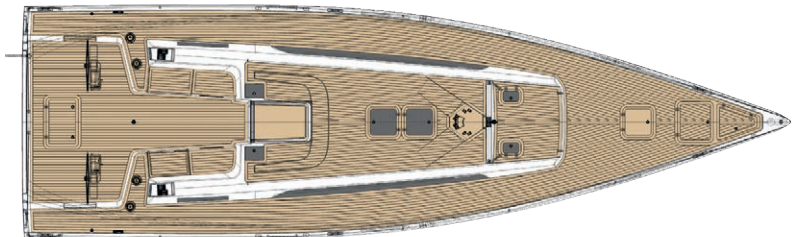


ALTERNATIVE INTERIOR PLAN

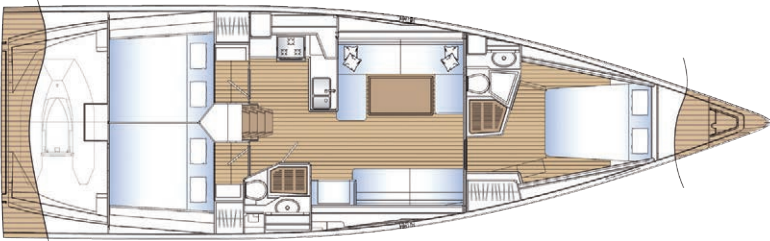


LOA	14.35	M
LWL	13.40	M
BEAM	4.36	M
DRAFT	2.80 (2.50 OPTIONAL)	M
DISPLACEMENT	LIGHT - 12,600	KG
BALLAST	4,320	KG
SAIL AREA	129	M²
MAINSAIL	70	M²
JIB	59	M²
P	19.05	M
E	6.50	M
I	19.60	M
J	5.475	M
ENGINE	VOLVO PENTA D2 50 S/ SR (75 OPTIONAL)	HP
WATER TANK	420	L
FUEL TANK	370	L
CE CERTIFICATION	RINA OCEAN CATEGORY A	
DESIGNER	JAVIER SOTO ACEBAL	
INTERIOR DESIGNER	SOLARIS DESIGN TEAM	
STRUCTURAL	SOLARIS DESIGN TEAM	

DECK PLAN

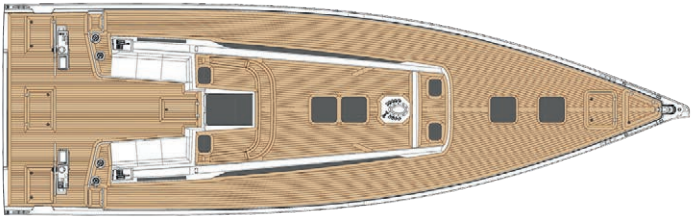


INTERIOR PLAN

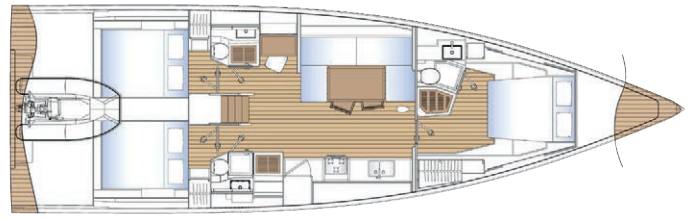
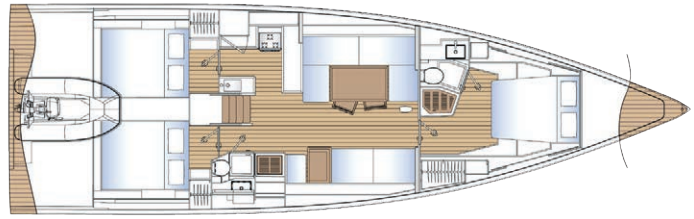


LOA	15.50	M
LWL	14.68	M
BEAM	4.78	M
DRAFT	2.80 (2.60 -2.35 OPTIONAL)	M
DISPLACEMENT	15,900	KG
BALLAST	4,850	KG
SAIL AREA	155	M²
MAINSAIL	84.70	M²
JIB 106%	70.30	M²
P	20.48	M
E	7.10	M
I	21.45	M
J	6.00	M
ENGINE	VOLVO PENTA D2 50 S/SR (75 OPTIONAL)	HP
WATER TANK	510	L
FUEL TANK	370	L
CE CERTIFICATION	RINA OCEAN CATEGORY A	
DESIGNER	JAVIER SOTO ACEBAL	
INTERIOR DESIGNER	SOLARIS DESIGN TEAM	
STRUCTURAL	SOLARIS DESIGN TEAM	

DECK PLAN



STANDARD AND ALTERNATIVE INTERIOR PLAN



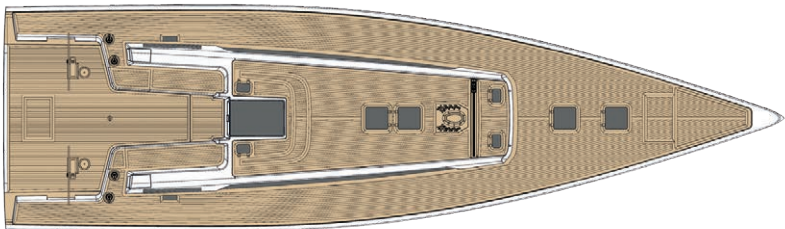
NEW

50

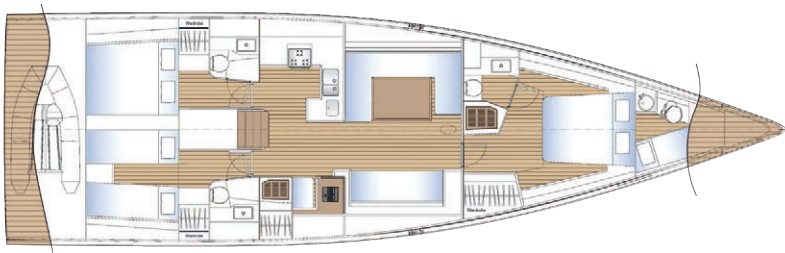


LOA	16.70	M
LWL	15.78	M
BEAM	4.85	M
DRAFT	3.00 (2.70 OPTIONAL)	M
DISPLACEMENT	LIGHT - 17,600	KG
BALLAST	6,500	KG
SAIL AREA	176	M²
MAINSAIL	98	M²
JIB	78	M²
P	22.20	M
E	7.60	M
I	23.20	M
J	6.55	M
ENGINE	VOLVO PENTA 75 (110 OPTIONAL)	HP
WATER TANK	475	L
FUEL TANK	385	L
CE CERTIFICATION	RINA OCEAN CATEGORY A	
DESIGNER	JAVIER SOTO ACEBAL	
INTERIOR DESIGNER	STUDIO ROSEO	
STRUCTURAL	SOLARIS DESIGN TEAM	

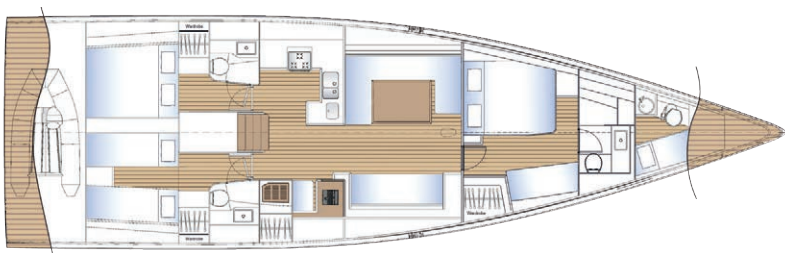
DECK PLAN



INTERIOR PLAN

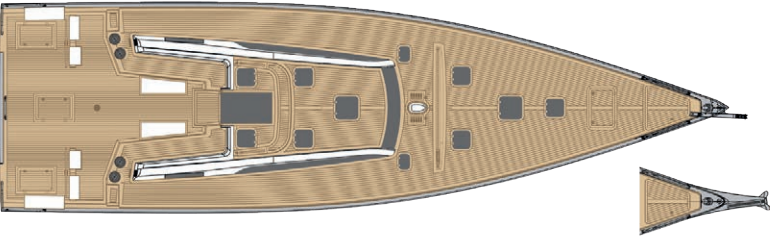


ALTERNATIVE INTERIOR PLAN

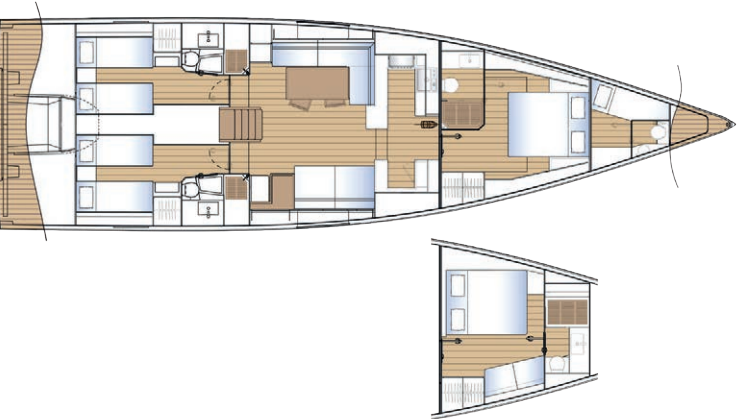


LOA	18.31	M
LWL	17.40	M
BEAM	5.28	M
DRAFT	3.20 (2.80 OPTIONAL)	M
DISPLACEMENT	LIGHT - 25,800	KG
BALLAST	7,900	KG
SAIL AREA	201	M²
MAINSAIL	100	M²
JIB	101	M²
P	24.00	M
E	8.20	M
I	25.00	M
J	7.10	M
ENGINE	75 (110 - 150 OPTIONAL)	HP
WATER TANK	450	L
FUEL TANK	650	L
CE CERTIFICATION	CATEGORY A	
DESIGNER	JAVIER SOTO ACEBAL	
INTERIOR DESIGNER	STUDIO ROSEO	
STRUCTURAL	SOLARIS DESIGN TEAM	

DECK PLAN



INTERIOR PLAN



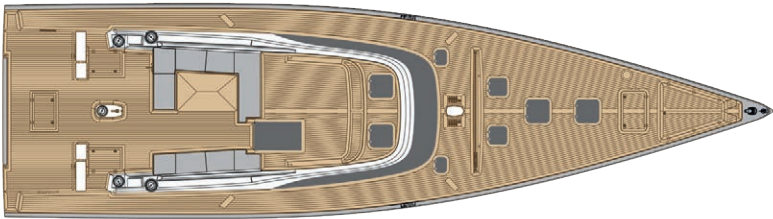
NEW

60

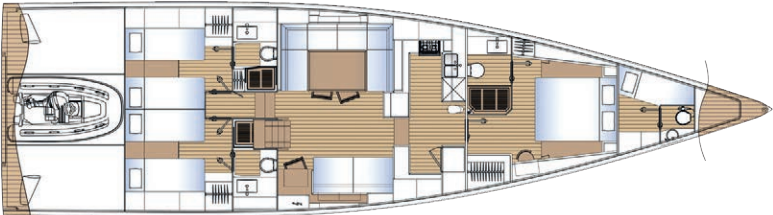


LOA	19.40	M
LWL	18.20	M
BEAM	5.40	M
DRAFT	3.30 - (2.90 OPTIONAL)	M
DISPLACEMENT	LIGHT - 27,600	KG
BALLAST	8,550	KG
SAIL AREA	222	M²
MAINSAIL	120	M²
JIB 106%	102	M²
P	24.10	M
E	8.40	M
I	25.30	M
J	7.27	M
ENGINE	VOLVO PENTA 110 (150 OR 180 OPTIONAL)	HP
WATER TANK	900	L
FUEL TANK	800	L
CE CERTIFICATION	RINA OCEAN CATEGORY A	
DESIGNER	JAVIER SOTO ACEBAL	
INTERIOR DESIGNER	STUDIO ROSEO	
STRUCTURAL	SOLARIS DESIGN TEAM	

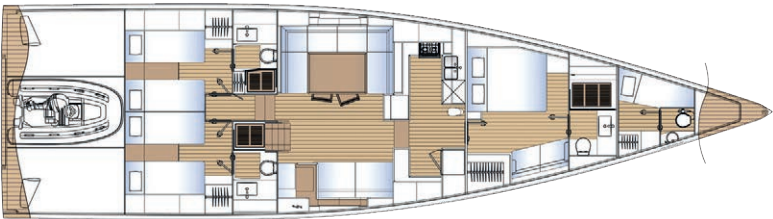
DECK LAYOUT



INTERIOR PLAN

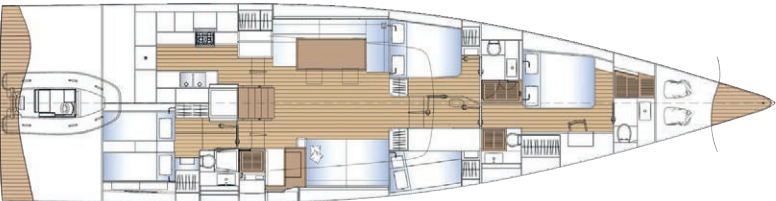


ALTERNATIVE INTERIOR PLAN

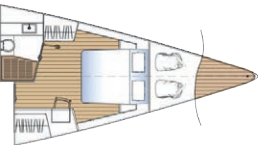
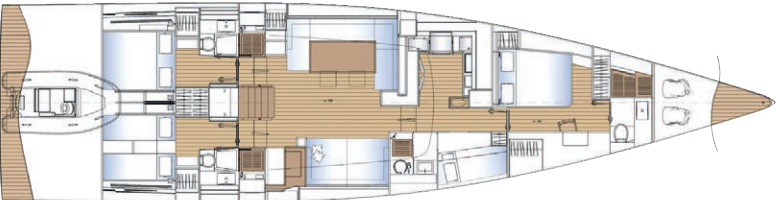


LOA	20.80	M
LWL	19.50	M
BEAM	5.50	M
DRAFT	3.40 - (3.00 OPTIONAL)	M
DISPLACEMENT	28,800	Kg
BALLAST	10,400	Kg
SAIL AREA	264	M²
MAINSAIL	116	M²
JIB 106%	148	M²
P	26.60	M
E	9.16	M
I	27.80	M
J	7.98	M
ENGINE	VOLVO PENTA 150 (190 OPTIONAL)	HP
WATER TANK	1,000	L
FUEL TANK	900	L
CE CERTIFICATION	RINA OCEAN CATEGORY A	
DESIGNER	JAVIER SOTO ACEBAL	
INTERIOR DESIGNER	SOLARIS DESIGN TEAM V. LALOSEVIC / L. MICHELETTI	
STRUCTURAL	SOLARIS DESIGN TEAM	

INTERIOR PLAN



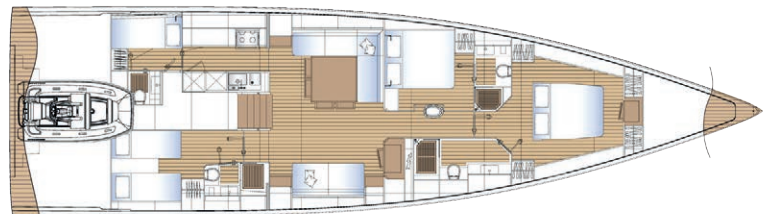
ALTERNATIVE INTERIOR PLAN



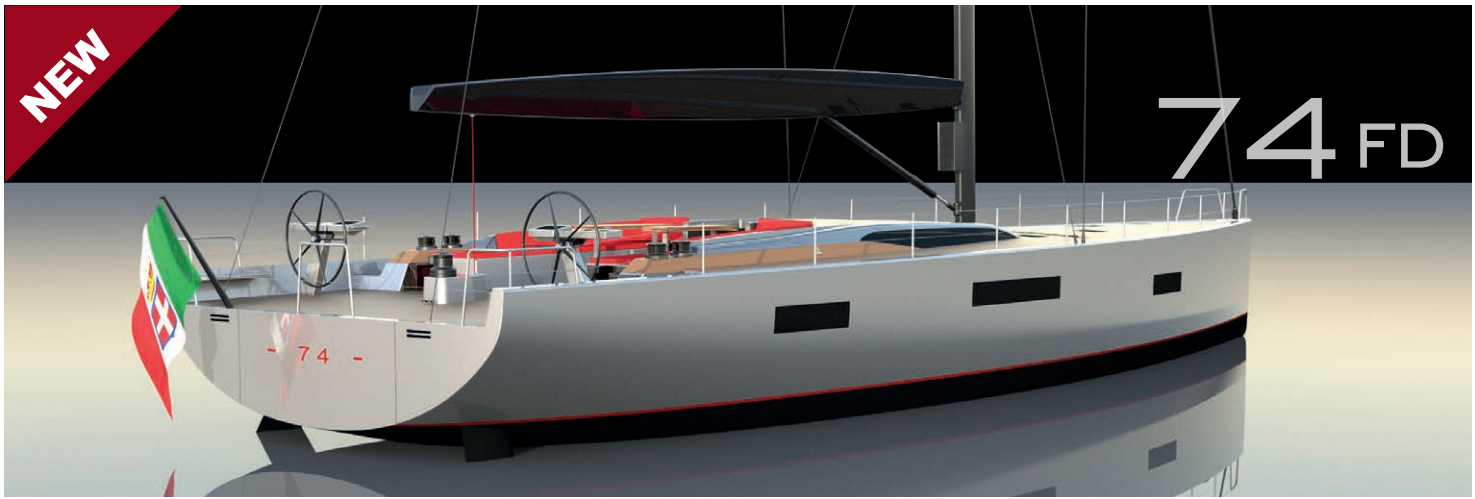
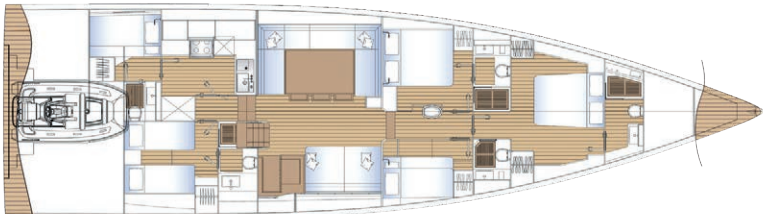
68 RS

LOA	21.60	M
LWL	20.38	M
BEAM	6.00	M
DRAFT	3.50 - (2.90 OPTIONAL)	M
DISPLACEMENT	LIGHT - 38,500	KG
BALLAST	10,500	KG
SAIL AREA	273	M²
MAINSAIL	138	M2
JIB 106%	135	M2
ENGINE	150 (175 OR 180 OPTIONAL)	HP
WATER TANK	1,200	L
FUEL TANK	1,000	L
CE CERTIFICATION	OPEN SEA CATEGORY A	
DESIGNER	JAVIER SOTO ACEBAL	
INTERIOR DESIGNER	SOLARIS DESIGN TEAM	
STRUCTURAL	SOLARIS DESIGN TEAM	

INTERIOR PLAN FD

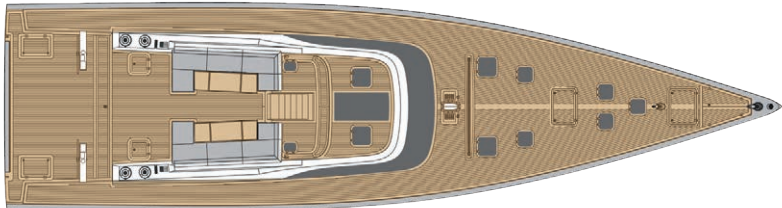


INTERIOR PLAN RS

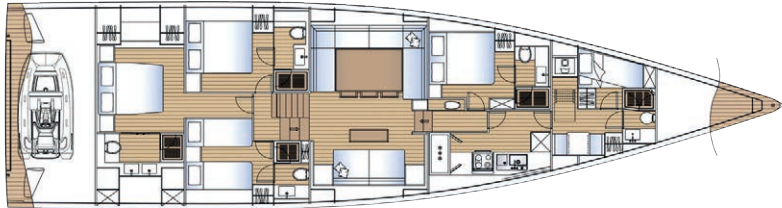


LOA	23.98	M
LWL	22.48	M
BEAM	6.39	M
DRAFT	4.0 - (3.5 - LIFT 2.6/4.2 OPTIONAL)	M
DISPLACEMENT	LIGHT - 46,000	KG
BALLAST	12,300	KG
SAIL AREA	325	M²
MAINSAIL	182	M²
JIB 90%	135	M²
P	29.80	M
E	10.50	M
I	31.00	M
J	9.25	M
ENGINE	180	HP
WATER TANK	1,500	L
FUEL TANK	2,000	L
CE CERTIFICATION	RINA CATEGORY A	
DESIGNER	JAVIER SOTO ACEBAL	
INTERIOR DESIGNER	SOLARIS DESIGN TEAM / L. MICHELETTI	
STRUCTURAL	SOLARIS DESIGN TEAM	

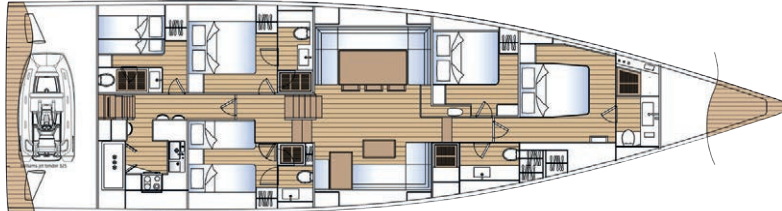
DECK LAYOUT



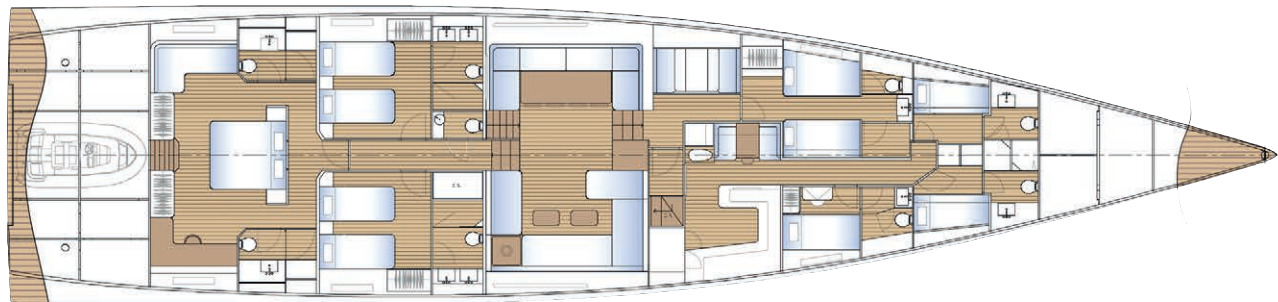
INTERIOR PLAN



ALTERNATIVE INTERIOR PLAN



INTERIOR PLAN



LOA	33.77	M
LWL	32.16	M
BEAM	7.90	M
DRAFT	3.90 - 6.05	M
DISPLACEMENT	78,000	KG
CONSTRUCTION	CARBON PRE-PREG	
SAIL AREA	645	M ²
MAST (CARBON)	43.60	M

GENERATOR	1X32	KW
THRUSTERS	1X28	KW
ENGINE	425	HP
WATER TANK	1,700	L
FUEL TANK	4,400	L
DESIGNER	JAVIER SOTO ACEBAL	
EXTERIOR DESIGNER	MYT	
INTERIOR DESIGNER	MYT	



BOAT
DESIGN &
INNOVATION
AWARDS
2021 WINNER

111



FOR MORE
INFORMATION PLEASE VISIT:
WWW.SOLARISYACHTS.COM



Solaris Yachts reserves the right to change descriptions, modify or substitute products in this catalogue without notice. Solaris is a registered trademark of Solaris Yachts Srl, other names may be registered trademarks of their respective owners.

© Solaris 2021. All rights reserved.

Photo credits:

G. Plisson, J. Renedo, C. Baroncini, N. Oleotto, A. Carloni, U. De Luca, Yacht/T. Störkle.

Printed in Italy: September 2021



SOLARIS 111

WWW.SOLARISYACHTS.COM