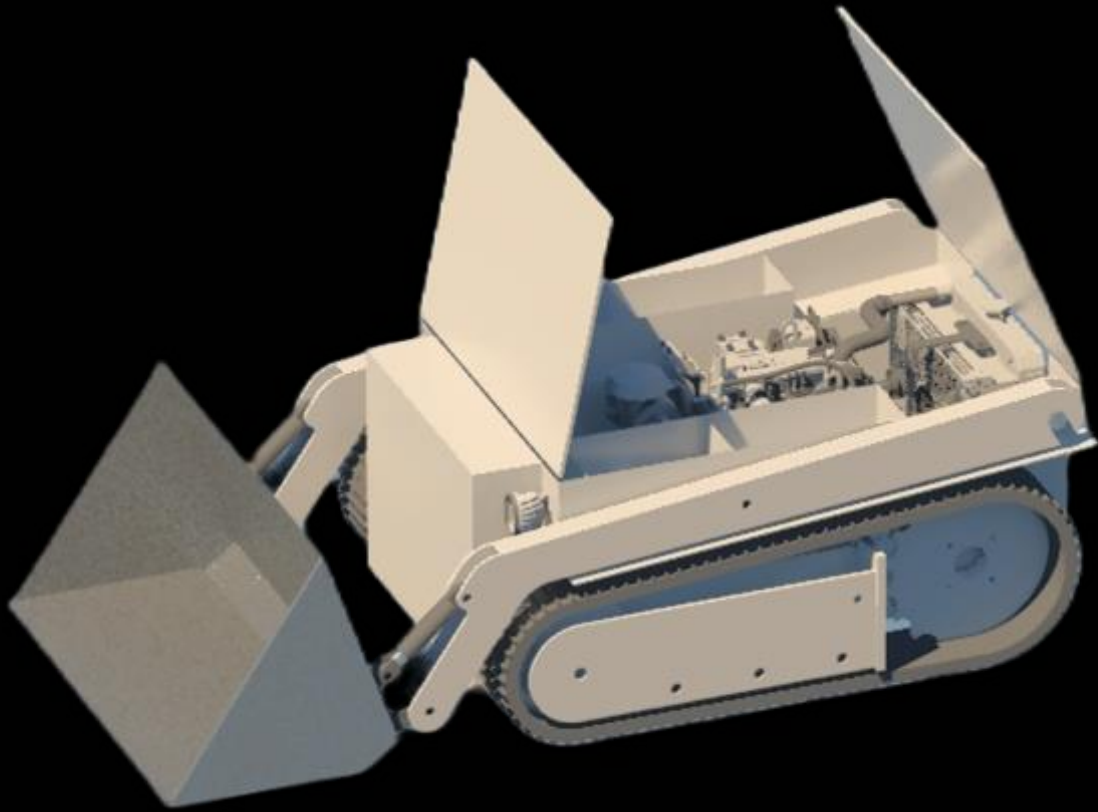


MARCH 22



Ro-Digger 620

Tracked Mini Front End Loader ROV



Robust By Design

SAFE, RELIABLE & INNOVATIVE
WWW.ROBUSTBYDESIGN.COM.AU



Robust By Design

SAFE, RELIABLE & INNOVATIVE
WWW.ROBUSTBYDESIGN.COM.AU



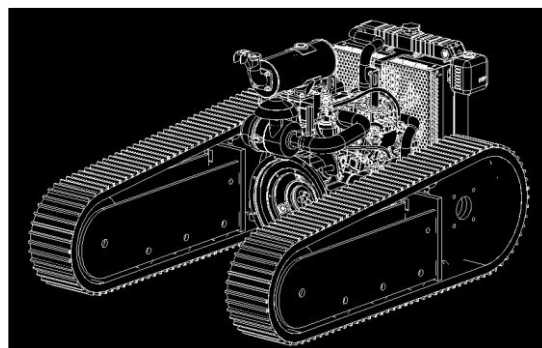
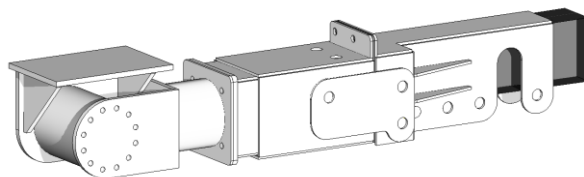
About us

Robust By Design is a proudly owned and run Western Australian family business that prides itself on safe and innovative design and construction.

We believe that the time taken in the design phase ensures our products not only meet customer expectation but exceed it.

We have an in house design and engineering service complemented by our expertise in fabrication and product development that delivers best in class products for the mining and industrial industry throughout Australia.

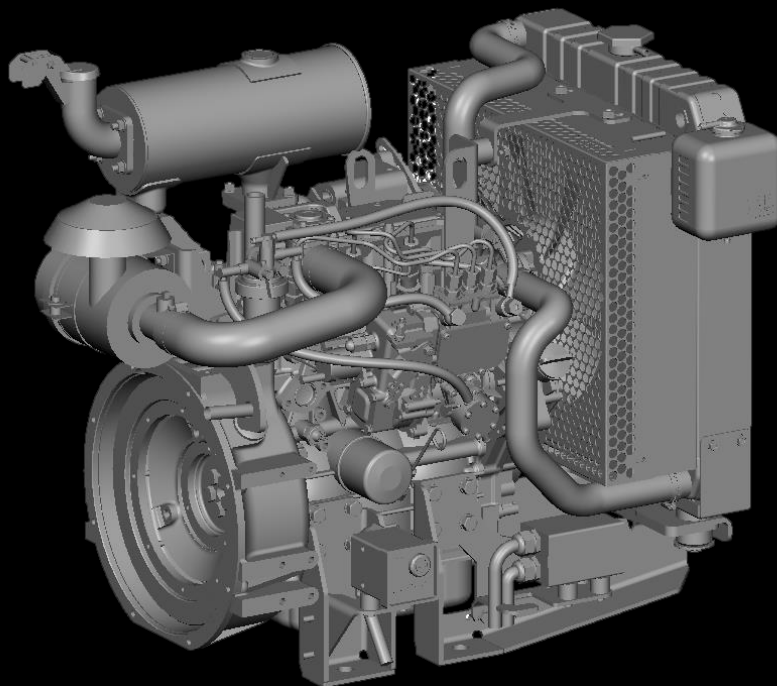
Safe. Reliable. Innovative.





Engine

- Japanese built Yanmar water cooled diesel engine 20hp to ensure long service life without overheating.
- Copper brass radiators for hydraulic and engine water cooling.



Hydraulics

- Italian built hydraulic main gear pump 210bar rated
- Fully proportional valve bank 5 function- 2x drive 1x lift 1x trim 1x auxiliary attachment
- Hydraulic lifting cylinders with double acting over-centre load holding valves
- High torque Hub drive motors for track system with specialized gearing allowing for a faster tram speed between work areas and coupled with multi stage proportion allowing for smooth controlled navigation around critical areas
- Auto tensioning hydraulic track system preventing machine from de tracking during operation
- Maintenance checks only required during service periods. This track system is de-energising upon machine shutdown which is beneficial in the temperature expansion and contraction cycles to increase rubber track and component service life.
- 4in1 hydraulic bucket (optional)



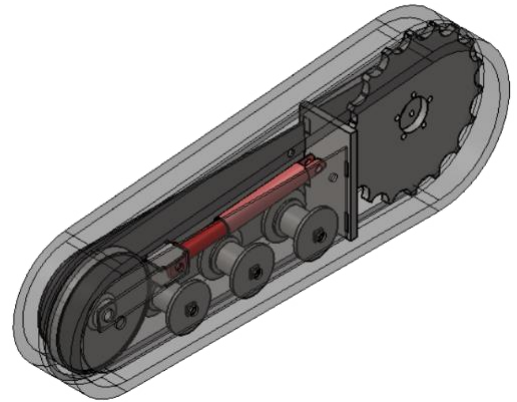


Robust By Design

SAFE. RELIABLE & INNOVATIVE
WWW.ROBUSTBYDESIGN.COM.AU

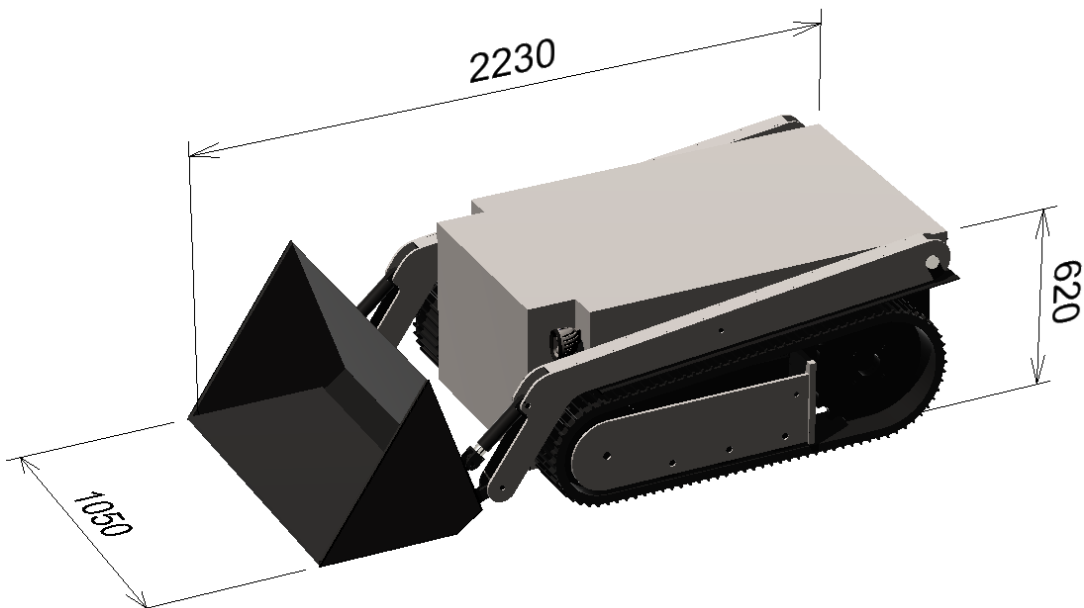
Construction

- Complete unit is made from 350GR high strength mild steel with additional performance steels used where required
- Lighting- LED work lights for night and low-lit work areas, amber led operating beacon, blue led running light
- Rotational guarding, engine covers, machine lids and hot surface indication to prevent operators from injury.



Dimensions

- 40L front mounted fuel tank (3 x12hr continuous running shift capacity)
- Complete mine spec unit with lockout battery isolator, amber beacon, horn, reflective tape emergency stop etc
- Custom built track system designed to move freely over tough terrain
- Independent jacking system to allow unit to lift as required to traverse uneven ground conditions
- Unit comes in painted white finish standard -colour options can be changed upon order



The Ro-Digger 620 is one of the smallest mini loaders on the market allowing it to get into the hardest to reach places



Robust By Design

SAFE. RELIABLE & INNOVATIVE
WWW.ROBUSTBYDESIGN.COM.AU

Electrical

- 12v Control box with led indicator fuse panel for easy diagnostics and all electrical componentry is universal common components in the case of emergency repair parts are widely available

Radio Remotes

- Full proportional remote control custom built to spec with engine ignition, start/stop, lights, horn, variable max speeds in full proportional controls, emergency stop



Additional Features

- 50m operating distance from operator
- Designed for easy maintenance with all on site electrical works able to be performed by onsite LV technicians
- Easy access panelling to allow access all parts of the equipment