



## THE LOUISIANA RACQUETBALL ASSOCIATION

*"Dedicated to promoting the game of Racquetball"*

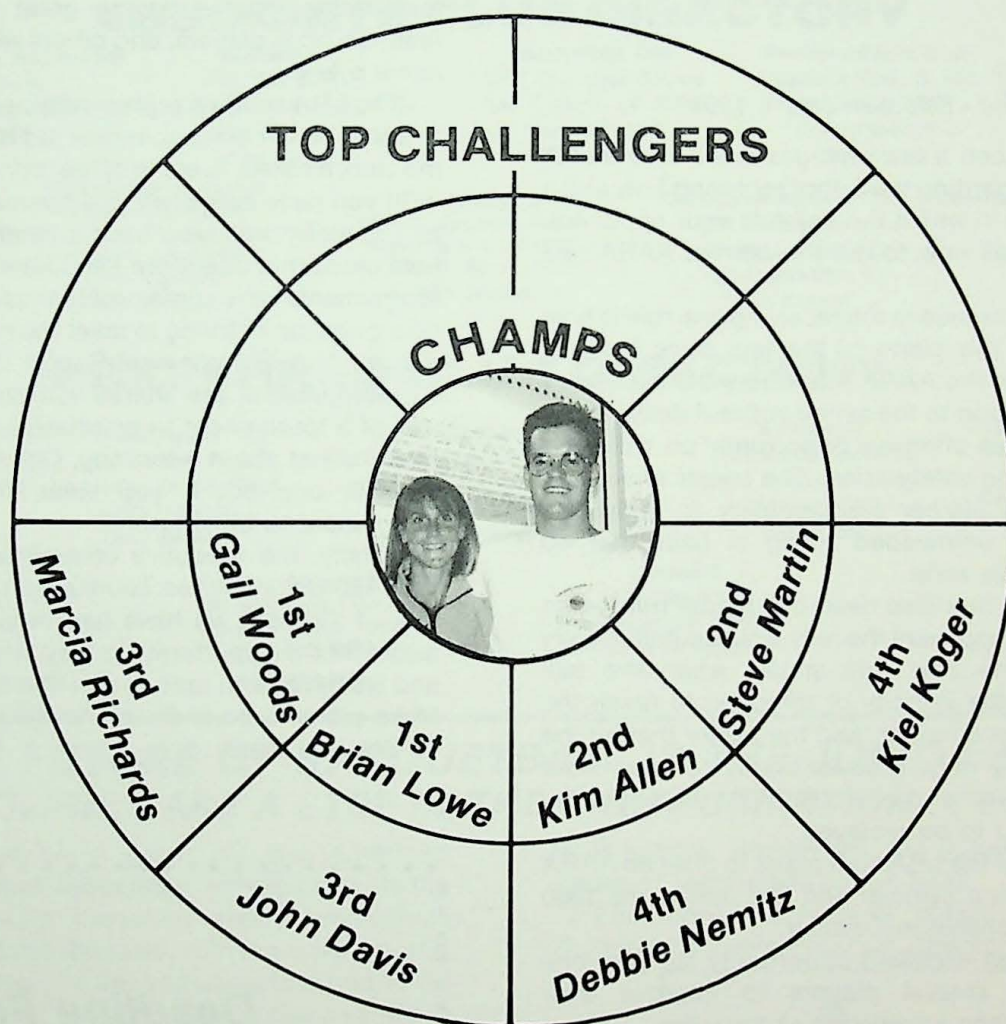
P.O. Box 80643 / BATON ROUGE, LOUISIANA 70898 / 504-346-8657

# NEWS

SEPTEMBER 1990

VOL. 12 NO. 2

## 1990 State Singles Championships



October 12 - 14

Wallbanger Court Clubs • Baton Rouge, LA



## Chairman's Corner

State Singles 1990 - Champs vs Challengers. It's here and we hope everyone plans to play in our expanded format. You can now play in 2 divisions: One skill and one age group. You cannot play in 2 skill (such as A & B) or 2 age groups.

Elections are here again. Please nominate your choice and remember the ballot on the back of the entry is for nominations only. Voting will take place at the tournament.

Make your plans to play.

See you at State!

Warren  
Chairman

## Rules

*"5-foot Safety Line - Effective Jan. 1, 1991"*

There have been a few changes made to the LRA modifications regarding the 5-foot receiving line, and a dead-ball hinder in which the ball hits your opponent. The new rules will now follow the current AARA rule book.

The basic difference in the receiving line rule is now you may break the plane of the line once the ball bounces. We feel the AARA rule offers the necessary degree of protection to the server without denying the receiver a possible offensive opportunity on balls that bounce within the safety zone. The server should be aware that it is his/her responsibility to allow the receiver a free, unimpeded swing at balls that do bounce inside this zone.

Under the old modified dead-ball hinder rule, when the ball hits your opponent the rally would automatically be replayed. The new rule states, when the ball obviously lacks the velocity or direction to reach the front wall it is not a hinder, and the player that hit the ball will lose the rally. This is simply to keep from rewarding a player who obviously hit a bad shot, by allowing the rally to be replayed.

Also, this year the LRA staff plans to offer an AARA referee certification seminar and test during the 1990 Singles Championship in October.

This will be an excellent opportunity for everyone from Open to D-level players to improve their refereeing skills and knowledge of the rules.

If you have any questions regarding these rule changes or the referee certification program, please contact your rules chairman, Mick Murphy, at (504) 275-6494 for more information.

Mick Murphy

## Who's Tournament Is It? .....

Several players have approached me recently about the LRA's role at tournaments. The players questioned why there was so much variation between tournaments in the prizes, court times, and other tournament features. The players also wondered why the LRA allows this variation to exist.

The fact is that the LRA only runs two tournaments each year - the Scholarship Tourney in January and the State Singles Tourney in October. All other tournaments are conducted by the host clubs and the LRA merely sanctions these tournaments. The host club has control over which tournament events to feature and which amenities to offer. And the feature of host club control is what makes tournaments so memorable - some having great shirts, some with featured open players, and others with great parties, to name a few.

The LRA sends a representative to all tournaments to enroll new members, renew old members and assist the club, if asked, in some of the tourney administration.

If you have ever been to a non-sanctioned tourney, as I recently was, you have a healthy respect for the host clubs that direct our sanctioned tournaments. All tournaments have some problems, but I think our clubs do a good job of trying to meet the needs of all the LRA players. Our "Tournament Report Cards" (available at all tournaments) are shared with the host club at the end of a tournament to emphasize what players liked and disliked about a tourney. Come by the LRA desk and fill one out if you want your opinion of a tournament to be heard.

Finally, the executive committee is excited about the 1990 State Singles Tournament and feels it will be one of the best we have had in years. Players have asked for the opportunity to play in age group divisions and we have been able to add this to our State format. Make plans to be in Baton Rouge in October.

See you there.

Warren Arnett  
LRA Chairman

**Deadline For  
Scholarship Applications  
Is NOW Dec. 1st**





# THE LOUISIANA RACQUETBALL ASSOCIATION

*"Dedicated to promoting the game of Racquetball"*

P.O. BOX 80643 / BATON ROUGE, LOUISIANA 70898 / 504 346-8657



## 1990 Tournament Schedule

\* State Championships

Type A - Draw done by LRA Tournament Committee

Type B - Draw done by the host club

MONTH	DATE	NAME	CLUB	CITY	TYPE
OCTOBER	12-14	★1990 State Singles Championships	WBCC	Baton Rouge	A
NOVEMBER	9-11	Elmwood's Turkey Day Tournament	Elmwood	New Orleans	B
DECEMBER	Nov. 30-2	1990 Holiday Classic	Covington Ct. Club	Covington	B
	7-9	1990 Crossgates Christmas Classic	Crossgates	Slidell	B

## ASSOCIATE CLUB DIRECTORY

### Rivercenter Racquet & Health Club

#2 Poydras Street  
New Orleans, LA 70140  
(504) 587-7242  
Libby Amdur

### N.O.W.R.A.

P.O. Box 52451  
New Orleans, LA 70152-2451  
(504) 891-5900  
Helen Siegel

### Racquetball One

1300 One Shell Square  
New Orleans, LA 70190  
(504) 522-2956  
Paul Bruno

### Premier Athletic Club

1 Galleria Blvd., S. 800  
Metairie, LA 70001  
(504) 836-5100  
Chip Peralta

### Sport City

2015 Meriweather Road  
Shreveport, LA 71109  
(318) 688-9600  
Debbie Nemitz

### Racquet Run

1507 Goodwin Road  
Ruston, LA 71270  
(318) 255-8330  
Eliot Diaz

### Heritage Sports Center

Heritage Plaza Bldg.  
Suite 475, Veterans Blvd.  
Metairie, LA 70005  
(504) 832-5982  
Les Schmidt

### The Courtyard

5615-H. Jackson Street  
Alexandria, LA 71303  
(318) 487-4141  
Jake Jacobs

### Crossgates Racquet Club

200 Military Road  
Slidell, LA 70458  
(504) 643-8194  
Darin Kramer

### Covington Racquet & Fitness

Route 8, Box 41  
Covington, LA 70433  
(504) 893-4800  
Edgar Schafer

## PREFERRED CLUB DIRECTORY

### Wallbanger

10473 Old Hammond Hwy.  
Baton Rouge, LA 70815  
(504) 923-2793  
Marsha Champagne

### Wallbanger

7069 Perkins Road  
Baton Rouge, LA 70808  
(504) 769-4120  
Gary Benson

### Wallbanger

13436 Old Jefferson Hwy.  
Baton Rouge, LA 70816  
(504) 292-9755  
Danny Boudreaux

### Wallbanger

3101 Monterrey Drive  
Baton Rouge, LA 70814  
(504) 923-7222  
Barry Day

### Elmwood Fitness Center

1200 S. Clearview Pkwy.  
Suite 1200  
Harahan, Louisiana 70123  
(504) 733-1600  
David Rahn

### Franco's Athletic Club

100 Bon Temps Rouler  
Mandeville, LA. 70448  
(504) 845-2639  
Brain Lowe

### Kenner-Y

2121 38th Street  
Kenner, LA 70065  
(504) 443-6363  
Kim Allen

## THE FUTURE OF RACQUETBALL IS THE JUNIOR PROGRAM ... JUNIOR CLINICS ARE A STEP IN THE RIGHT DIRECTION ...

The LRA received a grant for the American Amateur Racquetball Association to help promote the game of racquetball at the junior level. Eleven clinics were held throughout the state, with the racquets and eyeguards provided. All the club directors had to do was get the kids out. The size of each clinic varied in number of participants (6-44), with the Crossgates and Franco's clinics pulling the most kids. The age of the 200 participants also varied with a range of 5-year-olds to 14-year-olds. Most of the players are anxious to learn more about the game and to play, play, play!!!

Following the clinics, the clubs were encouraged to start a weekly Junior League, challenge ladders and more instructional programs. So if you are planning to have a tournament don't forget to include

your juniors. Remember, the young people are the future of racquetball in the 90's!!

For more information please contact Marcia Richards, Juniors Program Director.





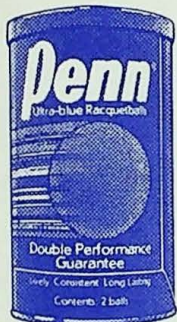
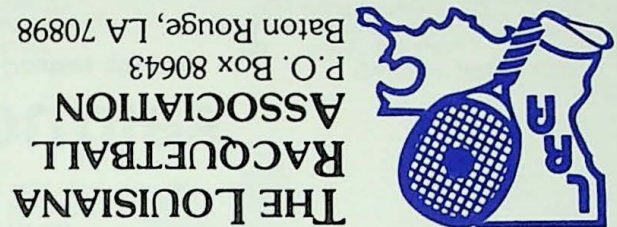
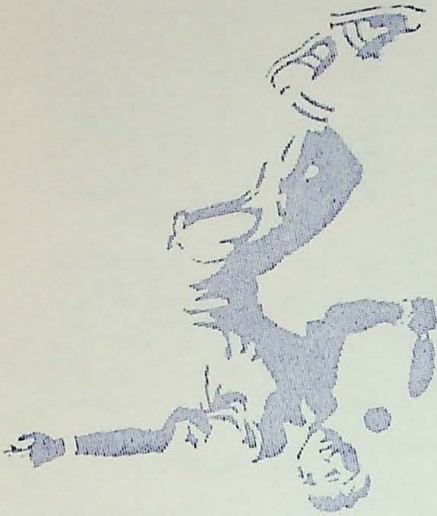








*"Dedicated to promoting the game of Racquetball"*



\*\*\*\*\*  
**PENN IS THE OFFICIAL BALL OF THE LRA FOR 1990**  
\*\*\*\*\*

**L.R.A. Executive Committee Meetings are held the  
2nd Monday of every month at 7:30 P.M.,  
3609 Perkins Road, Baton Rouge, LA 70808**

**Philip Pearce**  
District Sales Mgr.  
(800) 289-7366  
(318) 981-3214



**Jim Kitchen**  
(504) 272-6346

### **LRA EXECUTIVE COMMITTEE**

**CHAIRMAN**  
Warren Arnett

**FINANCE**  
Alan Lahr

**VICE—CHAIRMAN**  
Debbie Nemitz  
& Kim Allen

**PUBLIC RELATIONS**  
Barry Day

**RULES**  
Mickey Murphy