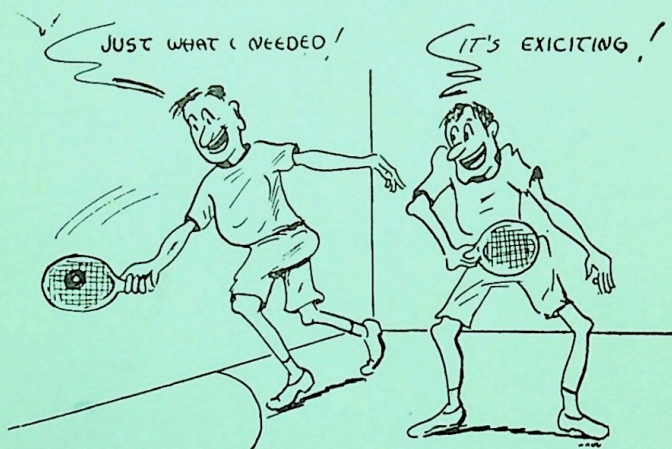


---

---

OFFICIAL  
PADDLE RACKET  
INTRODUCTION  
AND RULES



NATIONAL PADDLE RACKET ASSOCIATION

Joe Sobek, *President*

P. O. Box 51

GREENWICH, CONN.

25 CENTS

---

---



# NATIONAL PADDLE RACKET ASSOCIATION

P. O. Box 51  
GREENWICH, CONN.

## INTRODUCTORY COMMENTS

Paddle Rackets is one of the few games that can be enjoyed the first time that you try to play. The convenience of obtaining a game by getting one other player or two or three players for Singles, "Cut-throat" or Doubles, makes it a very flexible sport to arrange for a work-out. Unlike most games, it's not necessary to practice many long hours in order to play it well enough to get a work-out. This is because the racket and ball are such that it is very easy to learn and enjoy the game on the very first attempt. The Paddle Racket, unlike any other racket, is designed so that the hitting surface is near the hand; thus it is very easy for the player to make contact with the ball. The light high-bouncing ball gives the player a better opportunity to strike at the ball.

Originally, "Paddle Rackets" was played in the regulation hand-ball court, with no changes in the court whatever. It was found, however, that by changing the service boxes to be in relatively the same position as in a Squash Rackets Court, a more satisfactory result was obtained. We recommend that this service court be formed in the hand-ball court by adding a line of the floor across the back court, approximately 15' from the back wall, at the same time dividing it in half to form the two "Service" boxes.

If your court is not as large as the regulation size hand-ball court, reduce the distance from the back court to 14' or 13' depending on the size of your court. Note sketch on back page of the Official Rule Book showing the Paddle Rackets court and add your line as indicated; or if your court is smaller, add the line proportionately distant.

It is very important that the game be played with the official ball. A great deal of effort has been spent in developing the ball to suit the racket and court, and we must emphasize the importance of using the approved Paddle Rackets ball for all matches. The same ball is used for Singles, Doubles and "Cut-throat".

Paddle Rackets is a spontaneous outgrowth of hand-ball, squash and paddle ball, however, it is not meant to replace any of the above mentioned games, but we feel that the best of all three were combined and incorporated into the game of Paddle Rackets. To better explain the game would be to describe the racket and ball which we feel contributes most to the amazing growth of the game. The paddle racket, unlike the solid paddle, is manufactured with the same care and precision as used in the most expensive tennis racquets, using multiple lamination in its construction and strung with nylon string. The feel and touch is similar to a tennis-squash or badminton racquet. The overall length of the racket is 17 inches with a 6 inch handle, weighing ap-

proximately 14 ounces. The ball is a light high bouncing ball manufactured solely for Paddle Rackets. The design of the racket head is sufficiently large and the short handle of the racket permits a player, even if it's his first attempt, to enjoy the game because the hitting surface of the racket begins at the end of the player's hand thereby reducing the possibility of miscalculating the distance between the grip and the head of the racket. We also found that former hand-ball and squash players became excellent Paddle Racket players. And in our opinion most of the disadvantages of hand-ball and squash racquets are not found in Paddle Rackets. (Such as hand injuries, torn muscles that result from sudden starts and twists in hand-ball or being hit with the long handled squash racquet or the hard dead ball.)

Paddle Racket Doubles is perhaps the most popular of all. Of course one reason for its popularity is because it provides keener competition between teams. Matches can always be arranged and balanced by separating the better players with the poorer ones which will result in a good match. Beginners improve their game and the good players still enjoy their work out. The game will appeal to all types of players, young and old because the game does not dictate the amount of exertion necessary to play, it is up to the player to decide how strenuous it will be. The beginner will find it just as much fun and will get his work out as well as the good player. An interesting fact is that we obtain our largest participation from men in the age group of 30 years and up.

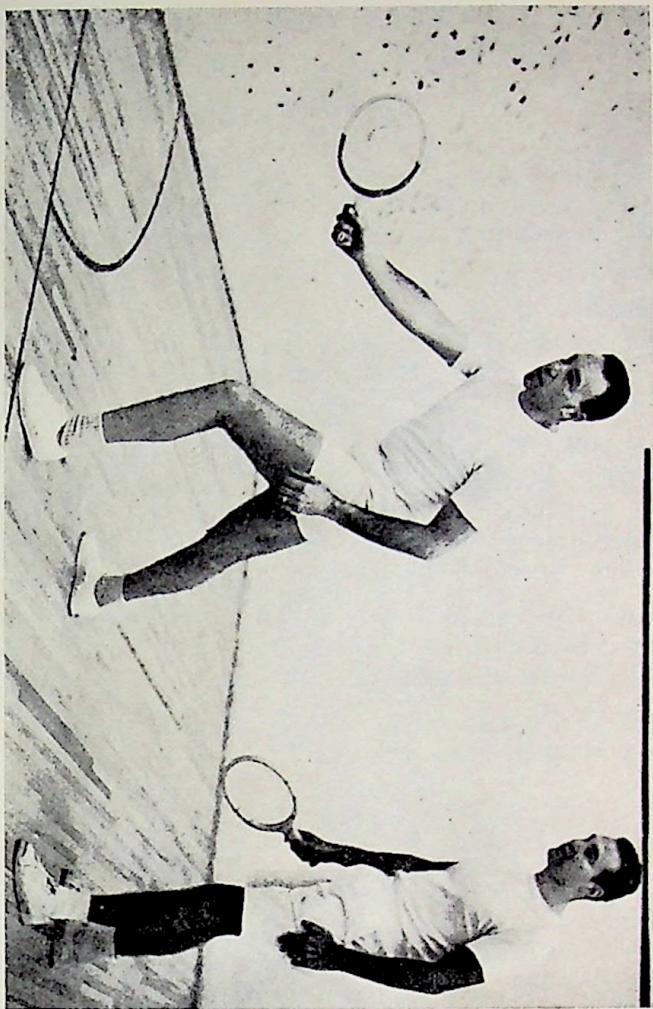
Numerous top-flight tennis players during the off season find Paddle Rackets a stimulating and invigorating game to supplement their racquet activities. Others, reaching the age where they find competitive hand-ball and squash too wearing, physically, have turned to Paddle Rackets as a means to continue their competitive careers.

The previous paragraphs dealt with Paddle Rackets played in a hand-ball court, However a regulation squash court is suited for Paddle Rackets. Actually both games are very similar, position and tactics are identical.

Heretofore squash has always been a difficult game for women to master. At last we have found a winter sport played in a squash court that women can learn and enjoy the first time they try. It isn't necessary to have played any racquet game before nor does one have to be athletically inclined. Unlike the difficulty women experience trying to keep a squash ball in play, paddle rackets light high bounc-

---

NATIONAL PADDLE RACKET ASSOCIATION  
P. O. Box 51, GREENWICH, CONN.



*Hodge Brush's forehand kill shot caught Everett Smith by surprise.*

---

ing ball and the short handle racket, affords continuous rallies immediately. Introduction of Paddle Rackets at your club or association will increase the activity in your squash courts and prove a valuable source of revenue to the club and to your profession.

Further information about the game, prices of rackets and balls may be obtained by contacting

---

JOE SOBEK  
P. O. Box 51  
GREENWICH, CONNECTICUT

Sole distributor of Paddle Racket equipment.

# NATIONAL PADDLE RACKET ASSOCIATION

P. O. Box 51, GREENWICH, CONN.

## OFFICIAL EQUIPMENT

### 1. COURT

The regulation Hand-Ball court or courts sanctioned by the tournament committee will be used for all tournament play.

### 2. BALL

The Official Paddle Rackets ball as manufactured for the National Paddle Racket Assn., has been adopted as the official ball.

### 3. RACKET

The racket shall have a wooden head similar to a small tennis racket except that its entire length will not exceed seventeen inches. It shall be strung with gut or a suitable substitute, provided it is not metal.

A. The Paddle Racket as manufactured for and distributed by Joe Sobek has been accepted by the National Paddle Racket Association as Official.

B. A wrist thong should be around player's wrist in such a manner as to prevent the racket from leaving his hand.

## RULES FOR SINGLES

### 1. SERVER

At the start of a match the choice to serve or receive shall be decided by the spin of a racket. The server retains the serve until he loses a point, in which event he loses the serve.

### 2. SERVICE

A. The ball is in play from the moment at which it is delivered in service until:

1. The point is decided
2. A fault is made
3. A let occurs
4. A hinder is committed

B. A ball may be bounced on the floor and struck on the first bounce in Service.

C. A good serve may be volleyed by the receiver before it strikes within service box.

D. At the beginning of each game, and each time there is a new server, the ball shall be served from whichever service box the server elects and thereafter alternately until the service is lost or until the end of the game. If

---

NATIONAL PADDLE RACKET ASSOCIATION

P. O. Box 51, GREENWICH, CONN.

## RULES FOR SINGLES

server serves from the wrong box, there shall be no penalty and the service shall count as if it were served from the correct box, provided, however, that if the receiver does not attempt to return the service, he may demand that it be served from the other box, or if, before the receiver attempts to return the service the referee calls a Let, then the service shall be made from the other box.

E. Until the ball has left the racket at service, the server must stand with at least one foot on the floor within, and not touching the line surrounding the service box and serve the ball onto the front wall before it touches any other part of the court, so that on its rebound (return) it first strikes the floor within, but not touching, the lines of the opposite service court, either before or after touching any other wall or walls within the court except the ceiling. A ball so served is a good service, otherwise it is a Fault.

F. If the first service is a fault, the server shall serve again from the same side. If the server makes two consecutive faults, he loses the point. A service called a fault may not be played.

### 3. RETURN OF SERVICE AND SUBSEQUENT PLAY

A. To make a good return of a service or of a subsequent return, the ball must be struck on the volley or before it has touched the floor twice and reach the front wall on the fly and it may touch any wall or walls or ceiling within the court before or after reaching the front wall. A return is deemed to be made at the instant the ball touches the racket of the player whether the return is good or otherwise.

B. From the moment of delivery by the server and until the ball is struck by the receiver or fails to do so, or the ball is dead, no player, other than the receiver, may stand in or on the boundary lines of the receiver's service box.

C. If the receiver fails to make a good return of a good service, the server wins the point. If the receiver makes a good return of service, the players shall alternate making returns until one player fails to make a good return. A point is added to the score of the person winning the point.

D. Until the ball has been touched or has hit the floor twice it may be struck at any number of times. Racket may be switched from one hand to another.

E. If at any time the ball hits outside the playing surfaces of the court or hits a line marking the playing area of

---

JOE SOBEK

P. O. BOX 51, GREENWICH, CONN.

## RULES FOR SINGLES

the court (except on the first service, when it is one fault), it is a point against the player so hitting the ball.

F. A ball that strikes the floor and front wall simultaneously will be considered "not up".

### 4. SCORE

Each point won by a player shall add one to his score.

### 5. GAME

The player who first scores twenty-one (21) points wins the game except that a player must win by a margin of at least two (2) points after the game is tied at twenty (20) all.

### 6. MATCH

A match shall be best two out of three games.

### 7. POSITION OF PLAYERS DURING PLAY

Each player must get out of his opponent's way immediately after he has struck the ball and

A. Must give his opponent a fair view of the ball, provided, however, that interference purely with his opponent's vision in following the flight of the ball is not a Let, or Hinder.

B. Must give his opponent a fair opportunity to get to and strike at the ball.

C. Must allow his opponent to play the ball from any part of the court.

D. Must allow his opponent to play the ball to any part of the front wall or to either side wall near the front wall.

### 8. BALL IN PLAY TOUCHES PLAYER

A. If a ball in play, after hitting the front wall, but before being returned again, shall touch either player, or anything he wears or carries, the player so touched loses the point, except as provided in Rule 9.

B. If a ball in play hits the striker's opponent or anything he wears or carries before reaching the front wall, the player who made the return shall lose the point if the return would obviously not have been good.

C. The player who made the return shall win the point if the ball would have gone directly from the racket of the player making the return to the front wall without first touching any other wall. If there is any doubt whether ball would have reached front wall directly, a let is called.

D. When there is no referee, if the players are unable to agree whether the return would have been good or whether the ball would have gone directly to the front wall, the point should be replayed as a let.

---

NATIONAL PADDLE RACKET ASSOCIATION

P. O. Box 51, GREENWICH, CONN.

## RULES FOR SINGLES

### 9. LET OR HINDER

A let or hinder is the stopping of play and playing the point over. On the replay of the point the server is entitled to two serves even though a fault was called on the original point.

The referee may call a let or hinder at any time for interference with play caused by any factor beyond the control of the players. If the referee fails to call a Let or Hinder when in the opinion of a player, he is entitled to a Let, such player may appeal to the referee and the referee's decision will be final.

The server must serve from the correct box even though he served from the wrong box on the original point.

#### A LET OR HINDER MAY BE CALLED

A. When a player unavoidably violates Rule 7.

B. When owing to the position of the striker his opponent is unable to avoid being touched by his opponent, his racket or anything he may be wearing.

C. When the striker refrains from striking at the ball because of reasonable fear of injuring his opponent.

D. When the striker in the act of striking, and before he actually hits the ball, is touched by his opponent, his racket or anything he may be wearing.

E. When a ball in play breaks.

F. When the striker, after being touched or interfered with, makes no effort to stop play, due to the aforementioned interference, and continues to attempt a return, no let will be honored.

### 10. LET POINT

A let point is deliberate interference with one's opponent in his playing of a point and the unnecessary crowding as defined in Rule 7. Even though the opposing player is not actually prevented from reaching the ball or actually striking at it, the referee must call a Let Point. If, in the opinion of a player, he is entitled to a Let Point, he should at once appeal to the referee whose decision shall be final. The player interfered with wins the point.

### 11. CONDITION OF BALL

No ball, before or during a match, may be artificially treated; that is heated or chilled.

### 12. CONTINUITY OF PLAY

Play shall be continuous from the first service of each game until the game is concluded. Between games, play may be suspended by either player for a period not to exceed one minute and between the second and third games

---

JOE SOBEK

P. O. BOX 51, GREENWICH, CONN.

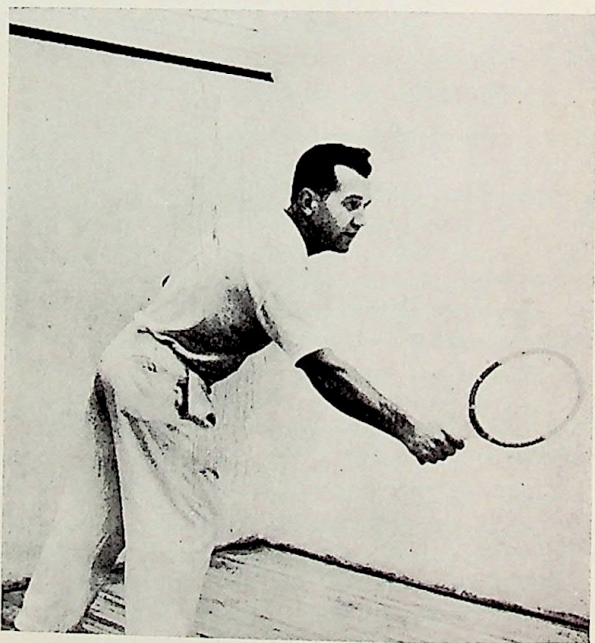
## RULES FOR SINGLES

play may be suspended by either player for a period not to exceed five minutes. No player may leave the court without the permission of the referee. The referee may suspend play for such period as he may consider necessary. If play is suspended by the referee because of an injury to one of the players, such player must resume play within fifteen minutes or default the match. Play will never be suspended to allow a player to recover his strength or his wind. The referee shall be the sole judge of intentional delay, and, after giving due warning, he must disqualify the offender.

In the event the referee suspends play other than for injury to a player and for some cause beyond the control of both players, such as the failure of the electric lighting system, play shall be resumed when the cause of such suspension of play has been eliminated, provided however, that if such cause of delay cannot be rectified within one hour, play may be postponed by the referee and resumed from the point and game score existing at the time the match was stopped, unless the referee and both players unanimously agree to play the entire match or any part of it over.

### 13. REFEREE DECISIONS

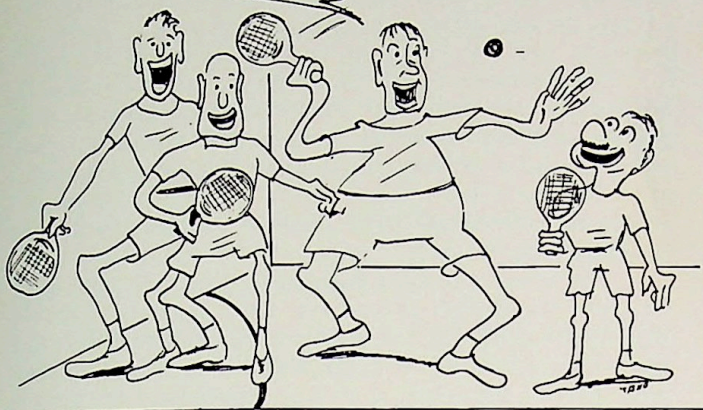
If the referee is in doubt under Rule 8 whether a return would have been good or whether it would have hit the front wall fairly without touching any other wall, he shall call a let.



*Joe Sobek executing a back-hand stroke from deep in the back hand court.*

NATIONAL PADDLE RACKET ASSOCIATION  
P. O. Box 51  
GREENWICH, CONN.

CAN BE PLAYED WITH 2-3  
OR 4 PLAYERS



### INTRODUCTION TO DOUBLES

Rules governing Paddle Rackets Doubles are primarily the same as those used in singles. Both Singles and Doubles are played in the same court.

Rules are the same in both games except as provided in Rules 1-2-3-4, which take into account that four persons are playing in the same court. Rules 5 thru 13 are the same for Doubles and Singles; exceptions are noted in Rules for Doubles.

#### 1. TEAM

Each side or team shall consist of two players.

#### 2. SERVER

At the start of a match the choice to serve or receive shall be decided by the spin of a racket.

The order of serving within a side shall not be changed during the progress of a game.

The two partners of a side shall serve in succession, the first retaining his serve until his side has lost a point. On the loss of the next point, the side shall be declared out and the serve revert to the opponents. On the first serve of every game, however, the "in" side shall be declared "out" after it has lost one point only.

At the end of a game the side which has won that game shall have the choice of serving or receiving to commence the next game.

JOE SOBEK  
P. O. Box 51, GREENWICH, CONN.

## RULES FOR DOUBLES

### 3. SERVICE

A ball is in play from the moment at which it is delivered in service until (a) the point is decided: (b) a fault is made: or (c) a let or hinder occurs.

At the beginning of each game and each time a side becomes "in", the ball shall be served from whichever service box the first server for the side elects and thereafter alternately until the side is out or until the end of the game.

If the server serves from the wrong box, there shall be no penalty and the service shall count and the play shall proceed as if the box served from was the correct box, provided, however, he may demand that it be served from the other box, or if before the receiver attempts to return the service the referee calls a Let, the service shall be made from the other box.

The server, until the ball has left the racket for service, must stand with at least one foot on the floor within and not touching the line surrounding the service box and serve the ball onto the front wall before it touches any other part of the court, so that on its rebound (return) it first strikes the floor within but not touching, the lines of the opposite service court either before or after touching any other wall or walls within the court, except the ceiling. A ball so served is a good service; otherwise it is a fault.

### 4. RETURN OF SERVICE AND SUBSEQUENT PLAY

A. At the beginning of each game each side shall designate one of its players to receive service in the right hand service court and the other to receive service in the left hand court and throughout the course of such game the service must be received by the players so designated.

B. To make a good return of service or of a subsequent return, the ball must be struck on the volley or before it has touched the floor twice and reach the front wall on the fly, and it may touch any wall or walls or ceiling within the court before or after reaching the front wall.

C. The "Receiver Box" and the bordering lines shall be free of any player except the receiver. Violation of this provision will be a point against the violator.

D. Prior to and until the receiver strikes a fair serve, his partner must concede position in the box from which the serve is made, to the server and his partner.

E. Note: Rule 8, paragraph "C" for Singles; will not apply in Doubles.

### CUTTHROAT

Cutthroat is played by three players. The server plays against the other two and only scores while serving. When a point is lost by the server he loses the serve. Once the order of serve is established, it is followed throughout the game.

---

NATIONAL PADDLE RACKET ASSOCIATION

P. O. Box 51, GREENWICH, CONN.

## SUGGESTIONS TO BEGINNERS

Position in the court is the most important single consideration for the new as well as the seasoned player. After making a shot, the hitter should make every effort to return to the position where the service lines intersect in the center of the court. This is the key to winning. If your opponent holds this position and you are behind him, concentrate on getting him out of there by hitting hard parallel shots to the side walls as well as hard cross court shots. It's inadvisable to attempt "Put away shots" when your opponent is in this key position in front of you.

Avoid hitting the ball when facing the front wall. You will obtain more speed and accuracy by facing the side wall when in the act of hitting the ball.

Wrist action, similar to that used when throwing a ball, will add considerable speed to the flight of the ball.

---

## NATIONAL PADDLE RACKETS TOURNAMENT—1959

April 10th and 11th, 1959

New Britain YMCA's paddle rackets players captured both the singles and doubles national titles Saturday, April 11, in the final matches of the two-day championships sponsored by the New Britain Y.M.C.A.

Victor Lugli won the singles title by defeating Louis White of New York in two straight games while the pre-tournament favorite team of Dr. Joe Granski and Norman (Apple) Steinberg came through in the doubles by defeating Dr. Andrew Canzonetti and Mike Cimino in three straight games.

---

JOE SOBEK

P. O. Box 51, GREENWICH, CONN.

NATIONAL PADDLE RACKETS ASSOCIATION  
P. O. Box 51  
GREENWICH, CONN.

OFFICERS

<i>President</i> .....	Joe Sobek
<i>Vice-President</i> .....	Benjamin M. Price
<i>Secretary</i> .....	Douglas P. Boyea
<i>Assistant Secretary</i> .....	Robert A. Kraut
<i>Treasurer</i> .....	Norman E. Steinberg
<i>Assistant Treasurer</i> .....	Dr. Joseph A. Granski

BOARD OF GOVERNORS

Joe Sobek — Algert F. Politis  
Douglas P. Boyea — Dr. Andrew J. Canzonetti  
William F. Mangan, Jr.

COMMITTEE CHAIRMEN

<i>Ranking Committee</i> .....	Algert F. Politis
<i>Tournament Committee</i> .....	Dr. Andrew J. Canzonetti
<i>Referee &amp; Rules Committee</i> .....	John L. Erickson
<i>Admissions Committee</i> .....	Michael J. Cimino
<i>Publication Committee</i> .....	Walter C. Arendt
<i>Publicity Committee</i> .....	Robert B. Grace

EXECUTIVE COUNCIL

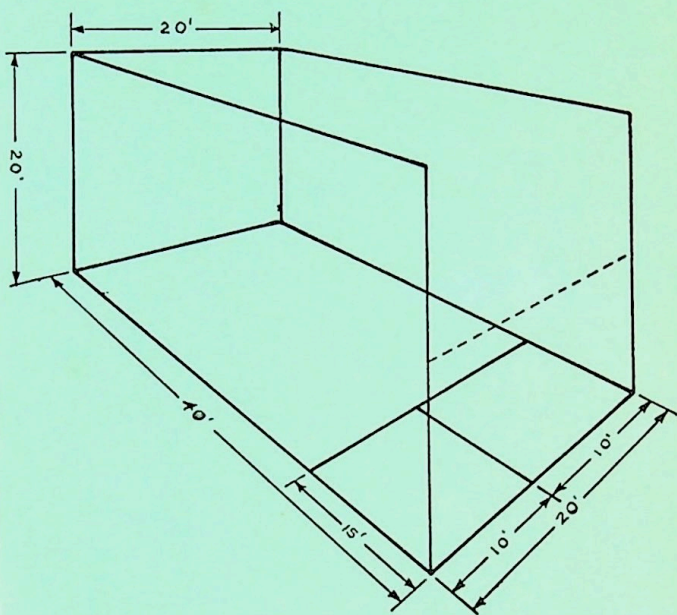
Eugene M. Lockett, New Britain, Conn.  
Roger F. Gleason, Jr., New Britain, Conn.  
George C. Paris, New Britain, Conn.  
Gabriel J. Hegyi, Buffalo, N.Y.  
George Roberts, Greenwich, Conn.  
Frank Sudell, Greenwich, Conn.  
John Goulemas, Greenwich, Conn.  
Frank S. Minnerly, Columbus, Ohio  
Chris Lecakes, New York, N.Y.  
William Parkhurst, Cleveland, Ohio  
Max Minsk, Cleveland, Ohio  
Mike Mervis, Lake Charles, Louisiana

---

JOE SOBEK  
P. O. Box 51  
GREENWICH, CONN.



*Official  
Court Dimensions  
For  
Paddle Rackets*



NATIONAL PADDLE RACKET ASSOCIATION  
P. O. Box 51  
GREENWICH, CONN.