



TREMITHOS HILLS

– APESIA –
LIMASSOL

TREMITHOS HILLS
APESIA - LIMASSOL



Tremithos Hills – Apesia

Rooted in Legacy. Designed for Generations.

At the entrance of the picturesque village of Apesia, where the hills of Limassol unfold in quiet Mediterranean beauty, stands a living monument — a -1,500-year-old Mt. Atlas mastic tree. Revered by generations and dedicated to Saint George, this extraordinary Pistacia Atlantica is more than a tree; it is a symbol of endurance, protection, and timeless presence.

Inspired by this rare natural treasure, Tremithos Hills – Apesia is a residential sanctuary shaped by heritage and elevated by modern design.

Here, architecture meets authenticity. Clean contemporary lines are softened by natural stone, sunlit terraces, and private gardens that echo the surrounding landscape. Every residence is crafted to offer privacy, serenity, and refined Mediterranean living — where mornings begin with golden light over rolling hills and evenings settle into quiet elegance.

This is not simply a place to live.
It is a place to belong.

Beneath the legacy of one of the world's oldest Pistacia Atlantica trees, Tremithos Hills invites you to become part of a story that has endured for centuries — and is ready to welcome the next generation.

Timeless. Grounded. Exceptional.

“

*This is not
simply a place
to live.
It is a place
to belong.*

”





Premium Building Specifications



Photovoltaic Efficiency

3 KW photovoltaic system serving each house for sustainable energy independence.



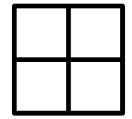
Lifestyle & Convenience

Private parking per residence, electric car charging point, landscaped surroundings.



Smart Electrical Infrastructure

Video intercom, CAT6 structured cabling, EV charging provisions and integrated solar readiness.



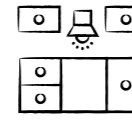
High-Performance Aluminum Systems

MU100- series frames with RAL 9011FT powder coating and double-glazed units for durability and insulation.



Modern Plumbing System

Pipe-in-pipe technology, solar water heating and pressurized tank system for optimal water performance.



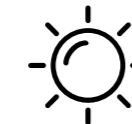
Refined Interior Finishes

Premium ceramic and porcelain flooring, elegant marble staircase and high-quality external plastering.



Structural Excellence

Engineered reinforced concrete structure with full seismic compliance, ensuring long-term safety and durability.



Climate Comfort Provisions

Full air-conditioning infrastructure, mechanical ventilation and kitchen extraction systems.



Advanced Thermal Performance

80mm external thermal façade, roof insulation and high-performance double glazing for year-round energy efficiency.



Location



Distance



Distance



Distance

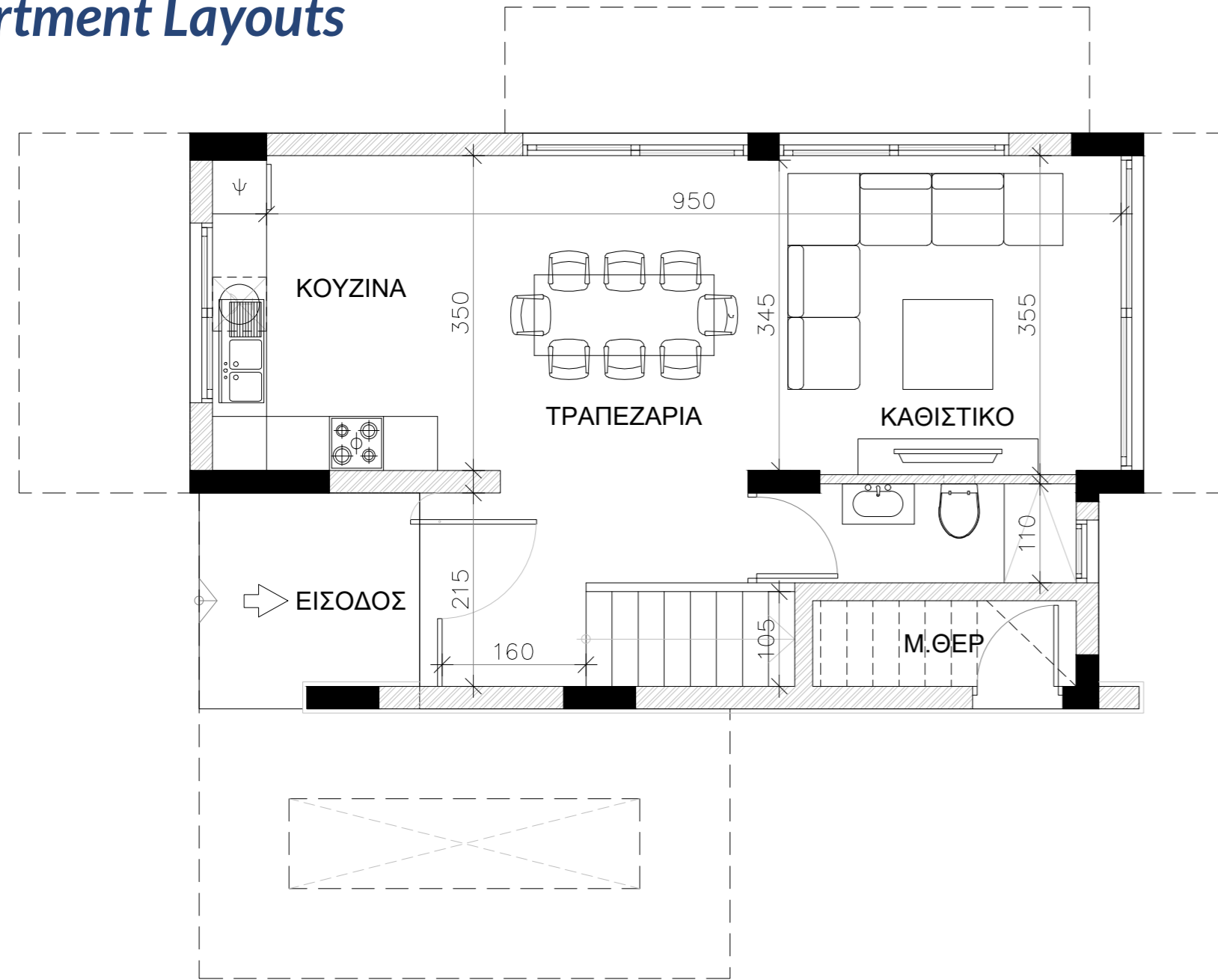
- Tennis & padel courts
- Modern fitness centers
- Supermarkets
- Clinics & pharmacies
- Banks
- Restaurants & cafés
- Bakeries

- The Heritage Private School
- Island School
- Pascal Schools
- Mediterranean Hospital of Cyprus
- local school

- Limassol Marina
- Old Town Limassol
- My Mall Limassol
- Limassol City Center & beaches
- COD Casino
- Gold courts



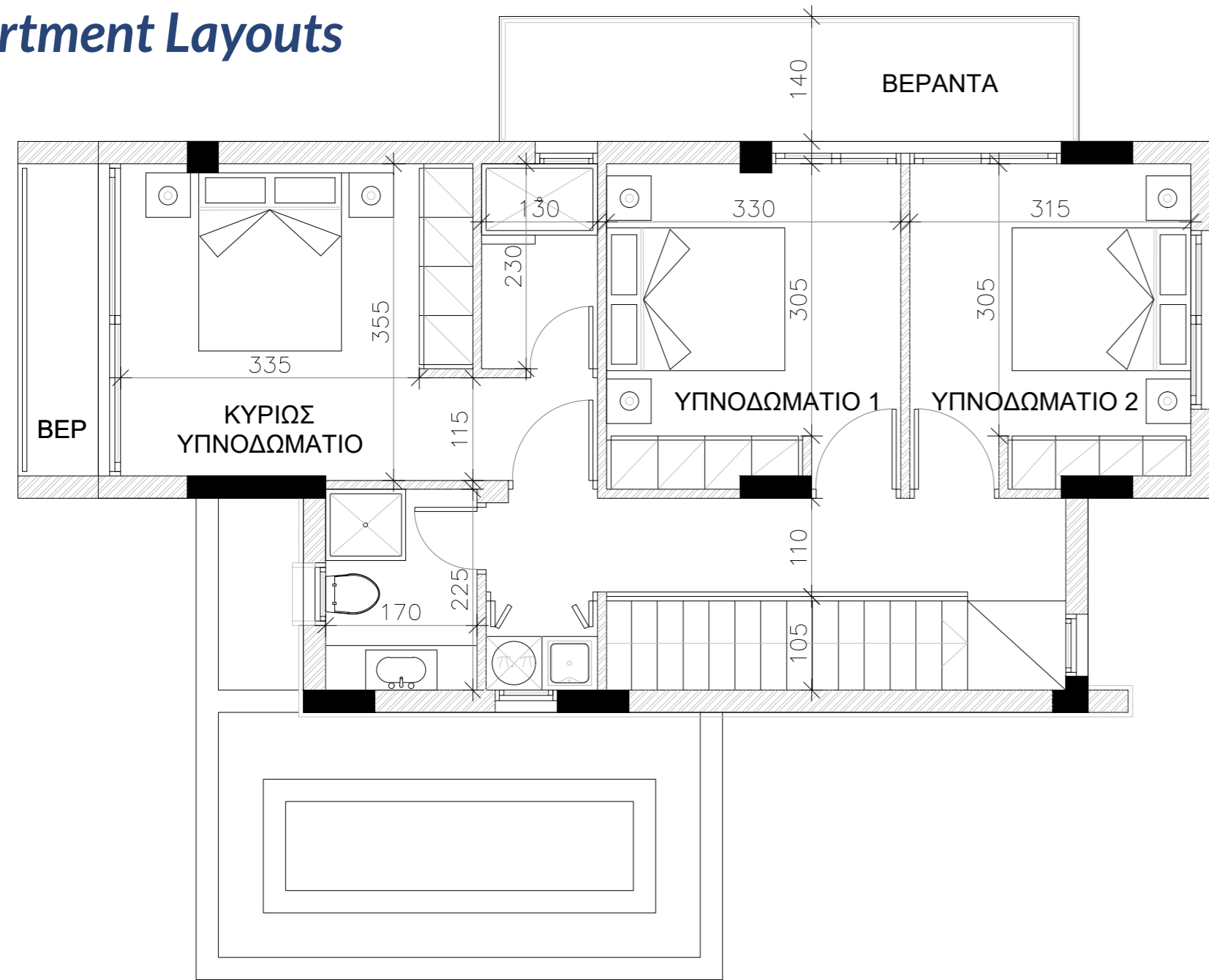
Apartment Layouts



Ground Floor Plan



Apartment Layouts



1st Floor Plan



Tremithos Hills – Apesia

6 residences houses (4 semidetached & 2 detaches)
in a very family friendly and prominent area, close to all local amenities, schools
and parks.

Houses

- 🌳 Three bedrooms (one bedroom is with ensuite bathroom)
- 🌳 Two bathrooms with shower trays
- 🌳 A toilet room on the ground floor
- 🌳 1st floor : 60.5 sq.m + 25.9 sq.m covered verandah
- 🌳 2nd floor : 70.7 sq.m + 4 sq.m covered verandah
- 🌳 135 m² internal living space:
- 🌳 Parking space
- 🌳 Energy efficiency of A

House No 1
Semidetached | €360,000 + VAT | 415 m² Plot

House No 3
Semidetached | €360,000 + VAT | 415 m² Plot

House No 5
Detached | €450,000 + VAT | 830 m² Plot

Optional:
Swimming pool€20,000 + VAT
Roof garden€35,000 + VAT

House No 2
Semidetached | €360,000 + VAT | 415 m² Plot

House No 4
Semidetached | €360,000 + VAT | 415 m² Plot

House No 6
Detached | €450,000 + VAT | 830 m² Plot

Optional:
Swimming pool€20,000 + VAT
Roof garden€35,000 + VAT



Contact our exclusive sales office today

we will be delighted to guide you
every step of the way toward owning
your dream home.



Growth Together
INVESTMENT SERVICES

Contact Us

Growth Together Investment services

☎ +357 999-70-820

🌐 www.growthtogether.cy

✉ gts@growthtogether.cy

🌳 THE PRICE DO NOT INCLUDE VAT

🌳 01/04/2026

🌳 Price may change without notice

🌳 Estimated property handover:
14 months from contract signing



TREMITHOS HILLS

– APESIA –
LIMASSOL