



#### HEAD OFFICE

#2603, 1st Floor, 'E' block, 9th Cross,  
15th Main, Sahakarnagar, Bangalore - 560 092  
Ph: +91 80 2362 0088, 63666 66156 / 63666 61656

#### NAGAVARA

#32, Service Road,  
Near Pruthvi Theatre,  
Nagavara,  
Bangalore - 560 045  
Ph: +91 80 2544 6761  
Mob: Ph: 74110 11070

#### MARATHALLI

# 81/9, Behind @home,  
Near Dhamro Furniture Shop,  
Opp. Kamakshi PG,  
Outer Ring Road Marathalli,  
Bangalore - 560 037  
Mob: 74110 31162

#### DOMLUR

#16, Basement,  
Service Road,  
Old airport Road, Domlur,  
Bangalore - 560 071  
Ph: +91 80 2535 7976  
Mob: Ph: 74110 31161

coordinator@svagroups.com | md@svagroups.com | sales@svagroups.com

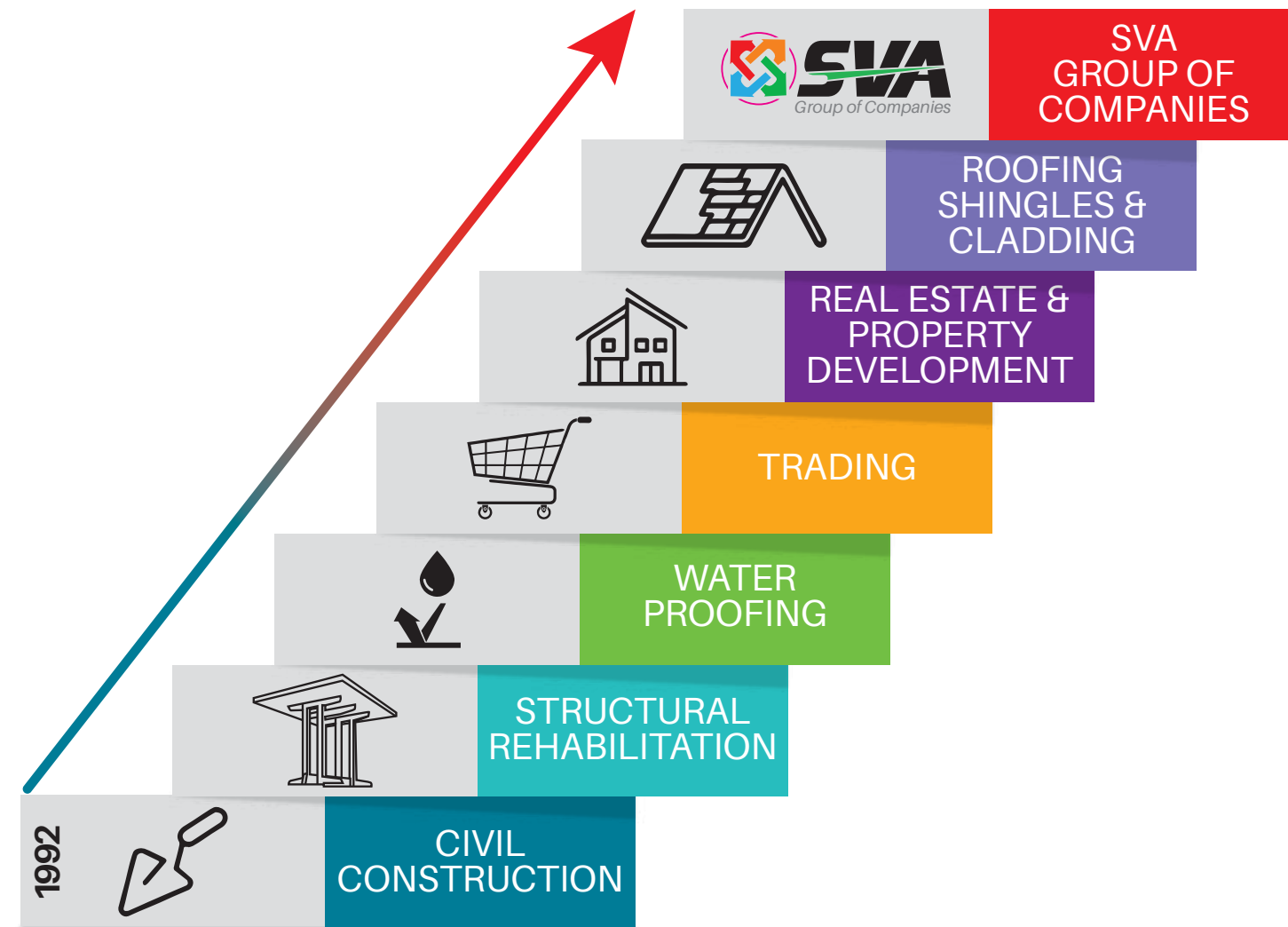
[www.svagroups.com](http://www.svagroups.com)



SVA INFRASTRUCTURES  
SREE VINAYAKA AGENCIES  
NIHARIKA ENTERPRISES  
NAVANEETH CONSTRUCTION CHEMICALS  
SREE VINAYAKA NAVANICK INFRA Pvt. Ltd.,



As we grow...



# WE ARE

## SVA Group

is Peerless Engineering, Construction and Trading company, established in 1992 as SVC. For long term vision and growth SVC parted to SVA Groups. Over the years SVA Groups has emerged as the industry leader in Engineering Construction and currently nurtures projects for prominent companies in Structural Rehabilitation, Waterproofing, Structural Steel works, Innovative Roofing, Flooring, Infrastructure Development and Property Development.

SVA Groups has a unique business model, with Proven Expertise in Innovative Thinking, project and Cost Management. We are focused on delivering High Quality work within Budgeted time and costs, as evident in various accolades and repeat business we specialize in large scale civil constructions by leveraging new age construction technologies. Setting the peerless examples of best teamwork within the company as well as with the group, our passionate team of extremely talented individuals works efficaciously in perfect co-ordination to achieve desired goals.

We have been part of prestigious projects across a multitude of verticals, where we are proud to have introduced many new construction innovations from last Two decades.

The expanding list of satisfied clients reflects our ability to execute challenging projects, despite all odds. We indigenize the latest global technologies to local conditions and terrain to extract maximum results and the tangible benefits are being experienced by our clients in all the projects executed by us.

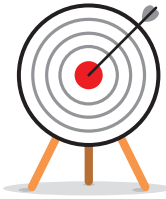
We have the knowledge and expertise to adjust to unforeseen project conditions and improvise accordingly. We also have the reputation to complete any project on time and on budget. We are well known in the industry for our excellent workmanship, professionalism and outstanding customer service. Our work have been appreciated for their innovations and are definitely conversational pieces.

# VALUES



## VISION

To be a transcendent global leader in rendering specialised and innovative solutions to the Construction industry, with constant focus on setting benchmark quality standards and indubitably within budgeted time and costs.



## MISSION

To work diligently towards building one of the most venerable Engineering Construction companies with a profound commitment towards Quality, Perfection, Innovation and Brilliance.



## QUALITY

The expanding list of satisfied clients reflects our ability to execute challenging projects, despite all odds. Difficult working conditions, weather or terrain has been no deterrent to our team which has delivered consistently and brought accolades to the company. The high percentage of repeat orders stand testimony to this our commitment to quality is unflinching, our hunger for growth is deep-rooted and our capacity for details is amazing. Over the decades, we have demonstrated a rare resilience and fortitude.



## SAFETY

Safety of our staff, clients, subcontractors, equipment, material, the public and the environment is paramount for our operations. Above all, safety is considered first when planning for your construction project. Supervisors, employees and sub-contractors are required to assist the company by working diligently, complying with applicable government legislation and co-operating with management to identify and reduce risks on and off the job.



## ENVIRONMENTAL

- Prevent and control any air, water and soil pollution arising from construction activities, plants, associated other utilities and also from amenities provided to our employees.
- Optimize utilization of water and nonrenewable resources, i.e. Materials, Fuel & Energy.
- Actively pursue efforts towards waste minimization - reduce, reuse & recycle.
- Control spillage from all pertinent operations.
- Comply with all applicable laws & regulations as well as contractual requirements.

# STRATEGY



SVA Groups has a very unique business model which is based on Innovation buttressed with Strategic Diversification. This is quite evident in our areas of expertise, our strategic partners and also the very structure of our organization. Our uncompromising business ethos, augmented by our focused customer centric approach, has ensured diversification does not lead to mediocrity.

# EXPERTISE





# WATER PROOFING

Our Waterproofing systems are designed to provide protection from water ingress and damage from the basement to the roof. Our products range from the acrylic and cementitious products for internal waterproofing to preformed membranes and high tech liquid applied polyurethane systems.

At SVA Groups we take special care in choosing the material required for waterproofing depending upon the specific need, cost and usage. Aside from the conventional systems, the most common materials handled by SVA are:

- Polyurea coatings and Injection Grouting systems such as cement based
- Acrylic polymer
- Cementitious Polymer modified coating
- Crystalline
- APP bitumen sheet membranes
- Cold applied bitumen emulsions
- Coal Tar based Epoxy coatings
- Joint sealants
- Epoxy resin based

## Application Areas:

- Basements
- Podiums
- Ponds
- Terraces
- Toilet and wet areas
- Overhead water tanks
- Roofs with thermal insulation
- Swimming pools
- Water bodies
- Pipes



Polyurea spray



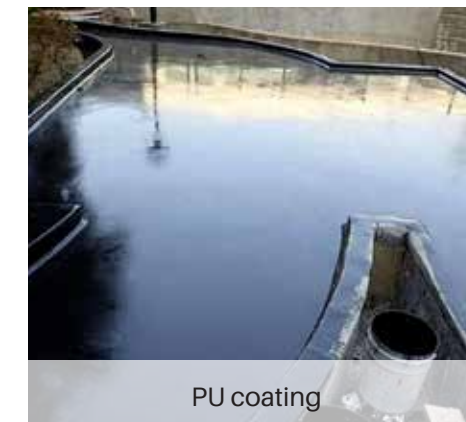
Acrylic polymer coating



Crystalline



APP membranes



PU coating



Joint sealants



Concrete protective coating



HDPE Membrane



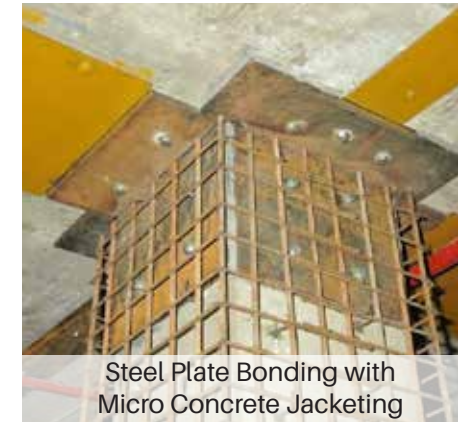
HDPE Membrane



# STRUCTURAL REHABILITATION & RETROFITTING

SVA Groups is a Structural engineering firm specializing in all facets of Structural, Waterproofing and building envelope repair, as well as rehabilitation and renovation related engineering and consulting services for numerous clients all over India. SVA performs a wide variety of structural-related services across various market sectors including commercial, institutional, educational, entertainment, and government. The majority of our projects are with repeat clients, attributable to our success in cultivating long term relationship with attentive service and providing creative and

cost effective solutions to engineering problems. SVA typically provides services to building owners, portfolio managers, property managers, architects and contractors relative to distressed structures and structural components. SVA closely works with our clients on every phase of the evaluation and repair process in order to provide our clients with a single source consulting service. SVA boasts of expertise in repair and strengthening of joints, steel jacketing and/or external steel elements and fiber reinforced polymer (FRP) composite application.



Steel Plate Bonding with  
Micro Concrete Jacketing



Column Strengthening  
by Micro Concrete



Beam Strengthening by  
Steel Plate Bonding



Beam Strengthening by  
Carbon Fibre Laminates



Slab strengthening by  
Carbon Fibre Laminates



Slab strengthening by  
Carbon Fibre Laminates



Column Strengthening by  
Carbon Fibre Wrapping



Column Strengthening by  
Carbon Fibre Wrapping



Column Strengthening by  
Carbon Fibre Wrapping

STRUCTURAL  
REHABILITATION  
& RETROFITTING



# ROOFING SHINGLES & CLADDING

SVA Groups provides the finest Roofing and Construction Services. We are well known in the industry for our excellent workmanship, professionalism and outstanding customer service. Whether you need a roof replacement, home improvement or a new roof, SVA Groups is the right choice. Shingles have been engineered to provide superior long-term performance and enhanced durability.

Striking looks, lasting beauty, Certain Teed Roofing offers a wide range of colors and style choices. Manufactured using new and innovative technology, CertainTeed Roofing products offer superior consistency and clarity.

Colors do not change through time. The granules do not absorb water and therefore it does not deteriorate. The coloring is carried out through a ceramic process at a temperature higher than 650 degrees. The inorganic pigments used for coloring are resistant to UV radiation and to higher temperature.

## Special Features of Shingles

Due to vast experience in large project execution, SVA has developed expertise in repairs in the following areas.

- Waterproof
- Not sensitive to frost (the product has been tested at -40 degrees)
- Not sensitive to heat (the product has been tested at +90 degrees)
- Wind resistant
- Hail resistant
- Not affected by environmental pollution
- Stands to any sudden change in temperature

In comparison to bituminous roof, the roof with certainteed shingles is made of little elements which absorb the movements of the structure easily.

It is a discontinuous roof which allows ventilation inside the roof.

In comparison to metal roof shingles are

- Quiet in rain and wind
- There is no condensation
- Doesn't become rusty

You can safely walk on a roof covered with shingles to inspect it, as they are skid resistant and are not brittle.



ROOFING  
SHINGLES &  
CLADDING



# STRUCTURAL STEEL

Throughout all phases of a steel construction project, the full-service team at SVA Groups utilizes a process-driven workflow to provide intelligent solutions in line with customers' challenging and demanding schedules. This takes advantage of sophisticated technologies to ensure mandatory pricing consistency with critical accuracy.



STRUCTURAL  
STEEL



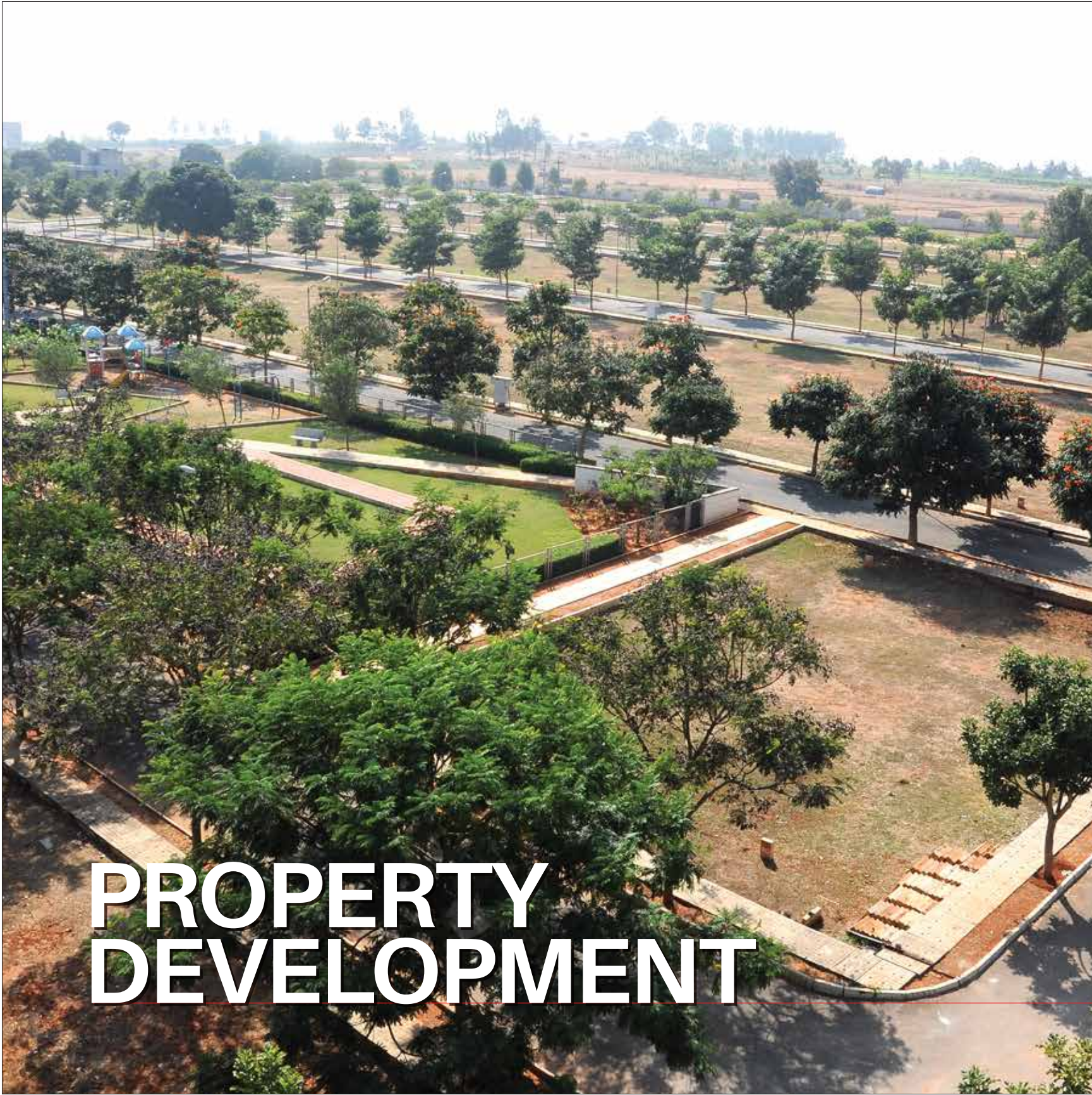


# FLOORING



FLOORING





PROPERTY  
DEVELOPMENT







TRADING

Authorised Applicators & Stockist



TRADING



# CLIENTELE

