



Welcome to

The Rustic Olive

Information guide

therustic_olive@outlook.com

www.rusticolive.com.au

THE ESTATE DETAILS

GUESTS:

Accommodation: Sleeps six guests.

30 Elopement guests

FURNITURE:

40 Bentwood Dining chairs.

5x 10- seater timber tables.

Arched Arbour

and more..

CATERING:

Private caterers are able to use the in-house kitchen.

Grazing Platters available through our sister business- Rustic Platters & Events.

SUPPLIERS:

You are welcome to hire all your own suppliers & vendors but please reach out for our recommendations

BAR SERVICE:

All events require RSA certified bar staff. This is a non-negotiable council requirement Please see below our recommendations



Ability to add the following to all packages using our recommended suppliers: Celebrant, Photographer, Videographer, Florist, Catering, Marquees, Styling & Content Creator.

Elopement

PACKAGE ONE

\$4800

- Monday - Thursday Up to 15 guests
- Day hire of the beautiful Rustic Olive grounds 10am-7pm
- On the day coordination of vendors & guests
- Accommodation not included.
- Use of our beauty room for bridal or groom preparations
- Celebrant & Legal documentation
- 3-hour Photography package including 200 high resolution retouched images
- Chair & Table hire included
- Signing table included
- Arbour hire & Umbrella & Clam stands included
- Set up/ pack down of chairs & tables
- One on one planning day at The Olive to bring your vision to life.
- Option to add on 2-night Accommodation.





Elopement

PACKAGE TWO

- Exclusive use of the estate including two-night accommodation for 6 guests
- Up to 20 guests
- On the day coordination of vendors & guests
- Assisted planning in the lead up to the day
- Chair & Table hire included
- Signing table included
- Arbour Hire
- Umbrella & Clam stands included
- Set up/ pack down & Rubbish removal
- Return Transportation from Maleny for up to 18 guests
- One on one planning day at The Olive to bring your vision to life.

\$4,550





\$6000

Elopement PACKAGE THREE

Package Three is the epitome of romance, providing you exclusive access to our estate and accommodation. It perfectly captures the essential elements of your love story with a touch of creativity. Experience the romantic charm of our elopement venue in beautiful Maleny.

- Exclusive use of the estate including two-night accommodation for 6 guests
Check in 10am - Check out 2pm.
- Up to 30 guests
- On the day coordination of vendors & guests
- Assisted planning in the lead up to the day
- Chair & Table hire included
- Umbrella & Clam stands included
- Signing table included
- Arbour Hire
- Set up/ pack down of chairs & tables & Rubbish removal
- Return Transportation from Maleny region for up to 24 guests
- One on one planning day at The Olive to bring your vision to life.



Elopement DELUXE PACKAGE



- Exclusive use of the estate including two-night accommodation for 6 guests
- Mid week Monday - Wednesday only.
Check in 10am - Check out 2pm.
- Up to 30 guests
- On the day coordination of vendors & guests
- Assisted planning in the lead up to the day
- Chair & Table hire included.
- Signing table included.
- Arbour Hire
- Umbrella & Clam stands included
- Set up/ pack down of chairs & tables & Rubbish removal.
- One on one planning day at The Olive to bring your vision to life.
- Optional rehearsal the day prior to wedding

2025

\$ 9 , 9 9 0

2026

\$ 1 0 , 3 0 0

- Return Transport from Maleny region for up to 24 guests available for an additional \$800. Required for all 2025 onwards events.

Florist: Love it Floral Design
Styling & Bar Service: The Tipsy Mare

DELUXE PACKAGE

Continued



Florals

- 1x Bridal Bouquet
- 1x Button hole
- 3x Plinth arrangements & plinth hire or 2x arrangement arched arbour.
- 1x Petite bar arrangement
- Bud vases containing 1-2 stems depending on florals, glass vases included.
- Set up, delivery and pack down all included.

Bar

- 5 Hour Bar service package with 2 RSA bar servers.
- 4 optional pop up bars to choose from (pending availability)
- Beverages supplied by client.
- ice tubs & ice included.
- Lemon & Limes included.
- Custom printed drinks menu.
- Glassware for 30 guests.
- Water station.

Styling

- 4x White Tablecloths.
- 30 napkins (colour scheme of your choice)
- 30 sets of main cutlery.
- 30 white entree & main plates.
- Pillar candles.
- Stylist set up & pack down.
- Delivery & clean fee included.



Platinum Package

Introducing our Platinum Elopement Package for 2025 & 2026 bookings—the only one of its kind on the Sunshine Coast. From professional hair and makeup to a licensed celebrant, gourmet catering, and exclusive use of our magical venue and boutique accommodation, every detail is thoughtfully curated for your dream day. Experience effortless romance and unforgettable moments at The Rustic Olive Maleny.

Exclusive use of the estate including two-night accommodation for 6 guests. On the day coordination of vendors & guests
Assisted planning in the lead up to the day .

Celebrant | Hair & Makeup | Bar Service |
Catering | Venue & Accommodation | Transport
Services | Photography | Florals | Styling

\$16,700

Monday - Saturday
up to 30 guests

Inclusions

For Platinum Package

Florals: The Olive Collective

1x Bridal Bouquet & Buttonhole
3x plinth arrangements or
arbour arrangements
1x bar or sign arrangement
24x bud table vases



Hair & Makeup: Keighley Collective

Hair & Makeup at The Rustic Olive for bride to be by Alyssa Armstrong from the Keighley Collective.

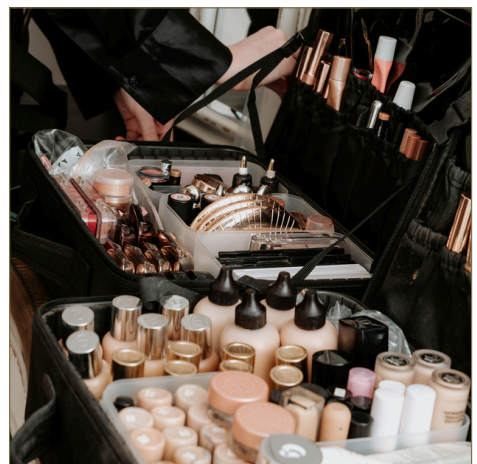
Leading artist on the Sunshine Coast.

Ability to add additional guests



Celebrant: Your Story - Danielle

- Creation of a beautiful and personalised ceremony
- Completion of all legal paperwork and lodgement with the relevant authorities on your behalf
- One on one meeting to discuss ideas.
- Ability to upgrade/ add MC services



Inclusions

For Platinum Package

Catering: Dar Nasone Italian

Cocktail hour:

- choose between a grazing board or 3x canapes choices per guests

Reception:

- Pizza unlimited for MAX 1 hour,
- side estiva salad served with pizza
- disposable plates, napkins and cutlery included



Photography: Emma Jade

5 hours photography

1 photographer

400 digital high resolution
retouched images

Sneak peaks within 24 hours
via an online private gallery



Styling: Ever After Events

- White Table cloths
 - Napkins in your colour theme
 - Entree & Main Plates
 - Cutlery
 - Table Candles
- upgrades available



Inclusions

For Platinum Package

Bar: Little Bar Cart

- Choice of Bar cart or Pop up bar
- 5- hour bar service
- BYO alcohol & beverages
- Glassware hire
- Ice & Garnishes
- RSA BarTender



Transport: Top of the range Transfers

Return Transfers for up to 24 guests from the local Maleny Region to The Rustic Olive and return to accommodation.



Venue Inventory Included:

- Chair & Table hire
- Signing table
- Arbour Hire
- Umbrella & Clam stands
- Wine Barrels
- Plinths
- Sign Stand or Easel



ONSITE FURNITURE

INCLUDED IN ALL
ELOPEMENT & WEDDING
PACKAGES

BENTWOOD CHAIRS

40 x chairs available. Can be used for both indoor and outdoor use. Weather permitting for outdoor use only.



WINE BARRELS

3x wine barrels available



BAR CART

1x Bar cart available - gold indoor or outdoor use



TIMBER EASEL

1x easel for signage. Indoor or Outdoor use.



WHITE TRESTLE TABLES

2x White folding trestle tables. Indoor or Outdoor use.



SIGNING TABLE

1x White Signing Table. Indoor or Outdoor use weather permitting.



WHITE PLINTHS

2x High, 1x Medium 1x Small.
Indoor or Outdoor use-
Weather permitting



CLAM UMBRELLA STANDS

3x Ceramic Clam umbrella
stands - cream



WHITE UMBRELLAS

3x White umbrellas.
Weather permitting for outdoor
use.



BENTWOOD STOOLS

9x Bentwood stools available
Indoor & Outdoor use weather
permitting.



TIMBER TRESTLE

5x 10 seater Timber trestle
tables available.
Indoor & Outdoor use.





*Your love story
awaits....*