

Woodworking at home

The DVD Magazine  for Craftsmen

Construction Zone with Chris DeHut

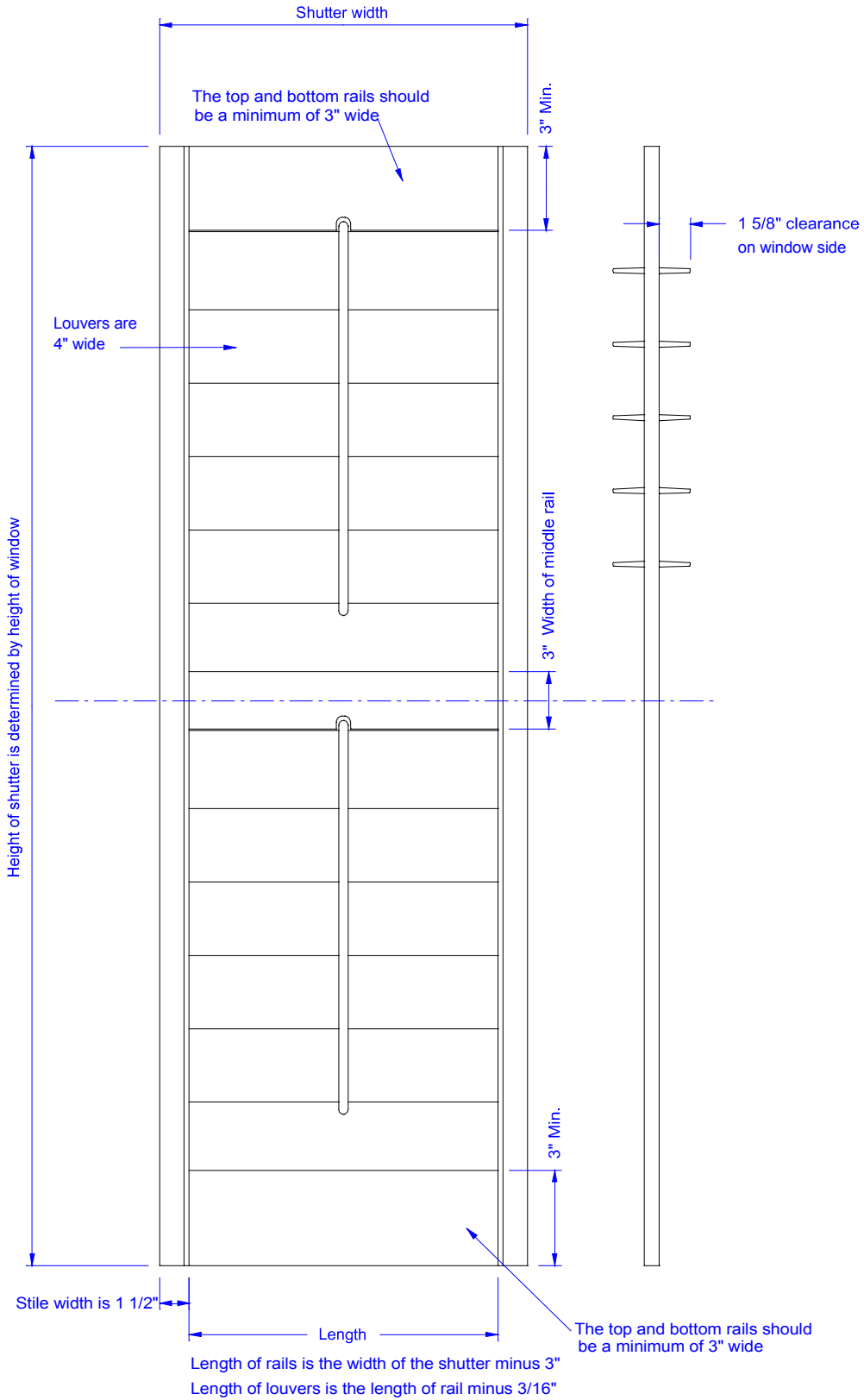
Project: Plantation shutters in poplar (other hardwoods will work too)



This document, and all other documents and materials are copyrighted materials. Distribution of these materials either in part or whole is a violation of Federal copyright law.

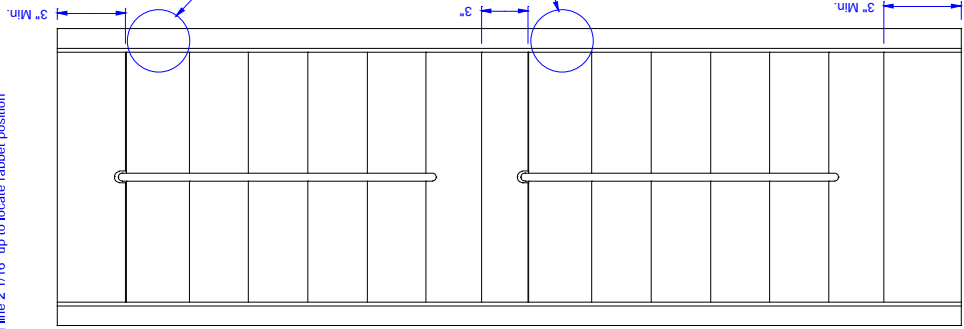
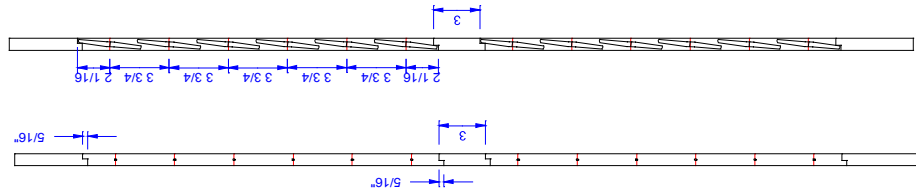
Copyright 2003, by SoftWerks International Inc. All rights reserved.

Generally, there are two shutters per window
Shutter width would then be 1/2 window width



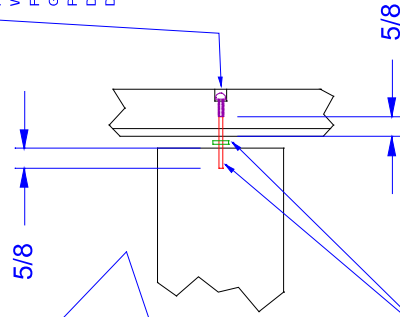
Louver and rail layout procedure

- 01) Layout the side view of the stile height
- 02) Find vertical center line for placement of center rail
- 03) Layout center rail position (note rabbet positions)
- 04) Moving up, mark position for first louver 2 1/16" up from rabbet
- 05) Mark next louver position 3 3/4" up from previous spot
- 06) Repeat 5 until you see that your top (or bottom) rail is between 3" and 5"
- 07) From last louver position, mark a line 2 1/16" up to locate rabbet position



LOUVER TENSIONING:

For the top most louver in each set, you will need to add a tensioning screw.
 When drilling the pivot pin holes, drill through the stiles on the top louver.
 From the outside of the stile, drill with a 3/8" drill 3/8" deep to clear screw head
 Grind the point off of a #8 x 3/4" sheet metal screw
 Perform this operation on both ends of the top louver in each set
 During assembly, tighten screws just enough to hold louvers in position
DO NOT OVER TIGHTEN!

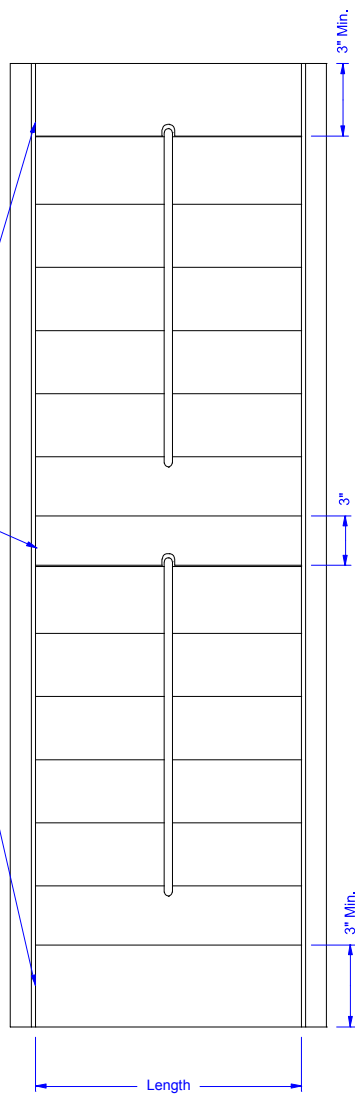


LOUVER PIVOT PINS:

The pins can be made by cutting off 1/8" brass rod to 1 1/4" lengths.
 A nylon washer with a .144 dia. hole is used to space the louver away from the stile
 You will need two pins and two washers for each louver
 On the stiles, drill 5/8" deep with a 9/64" drill for the pivot pin

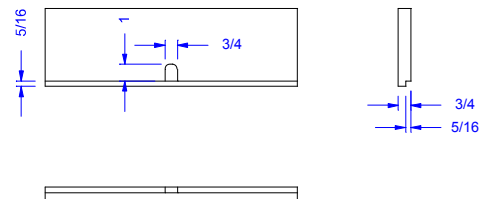
Join rails to the stiles with biscuits. #20 biscuits will work with most rail widths.

Alternative joints:
 3/8" dowels - 2-3 per joint
 Pocket hole screws
 Loose tenons

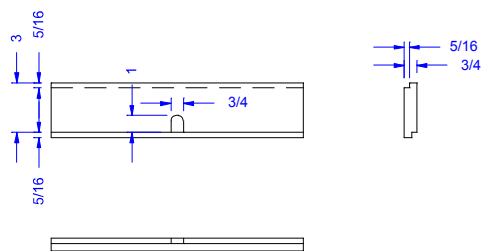


Length of rails is the width of the shutter minus 3"
 Length of louvers is the length of rail minus 3/16"

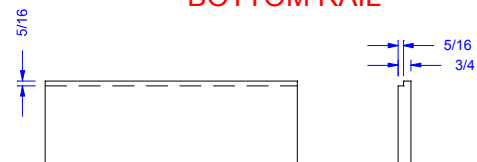
TOP RAIL



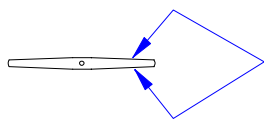
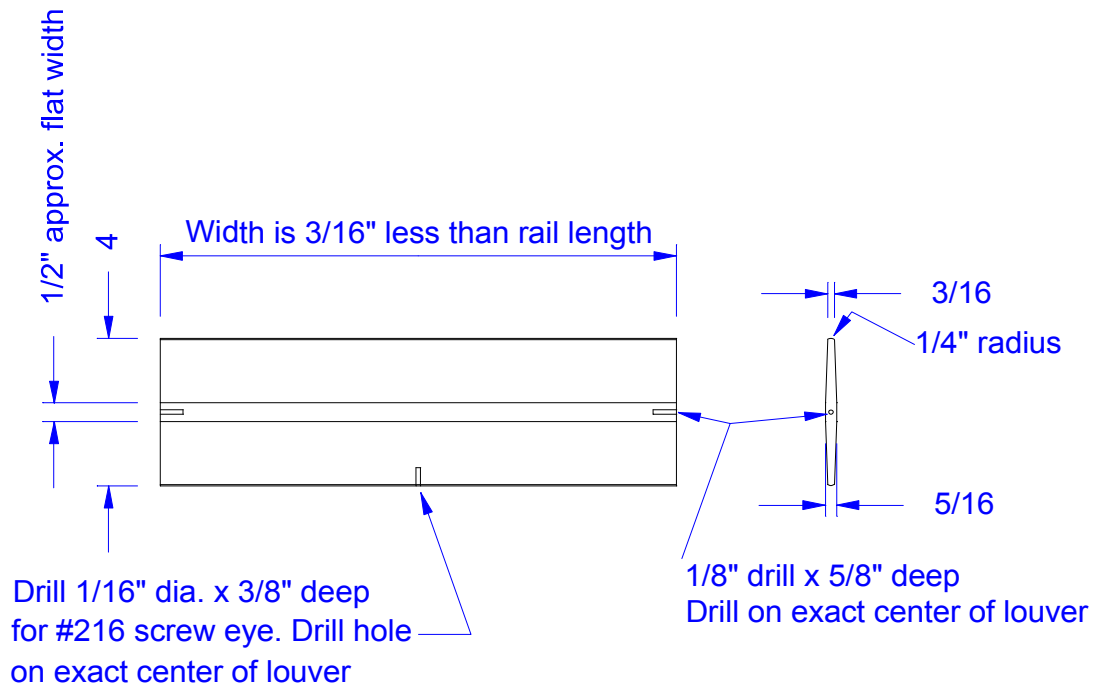
MIDDLE RAIL



BOTTOM RAIL



LOUVER



Bevel is approximately 2 degrees
on each face

ACTUATOR BAR

