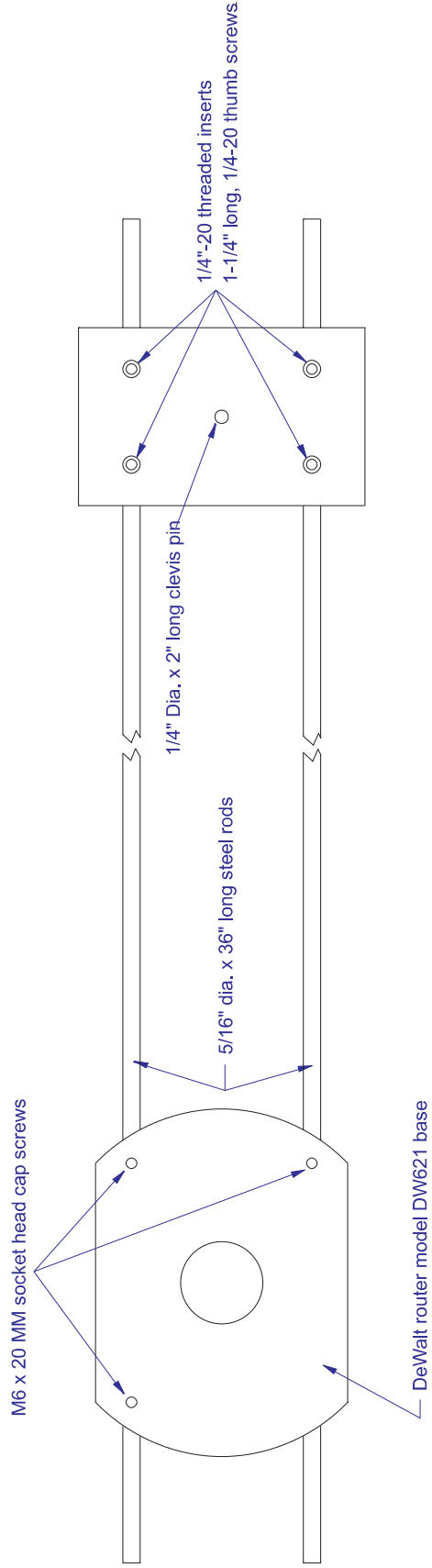
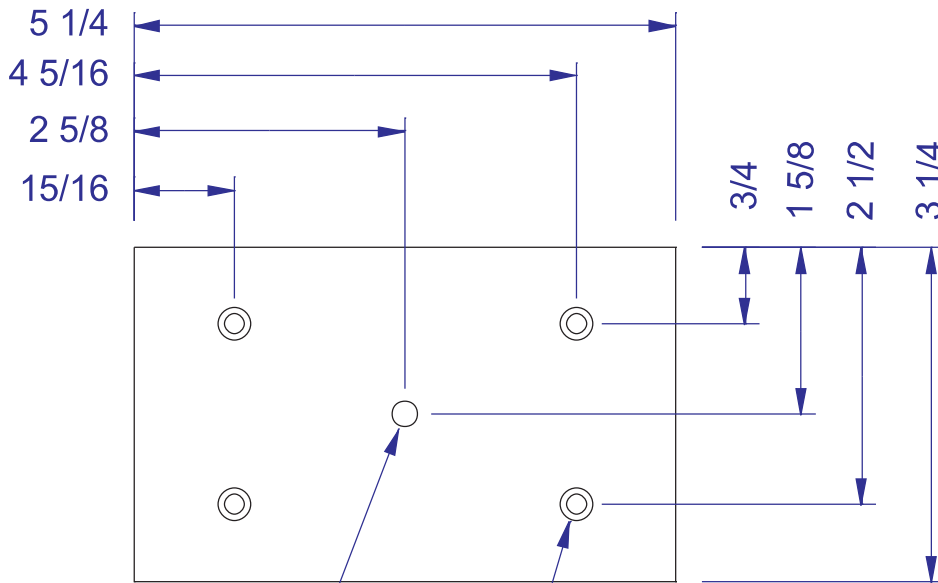


Circle Jig Assembly



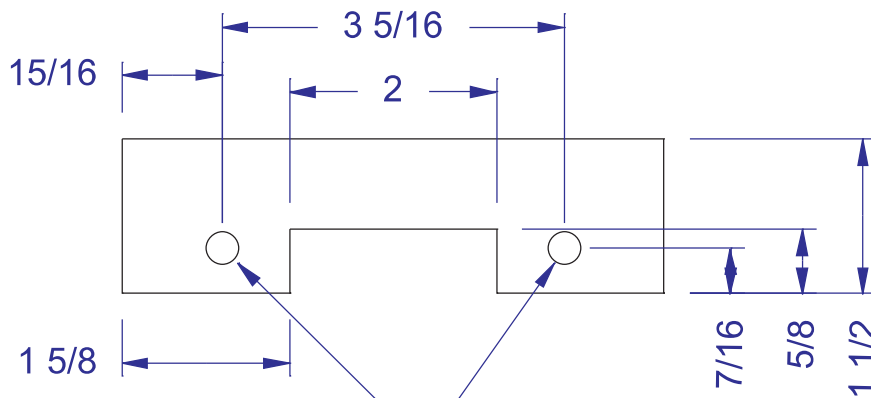
PIVOT YOKE

Hardwood



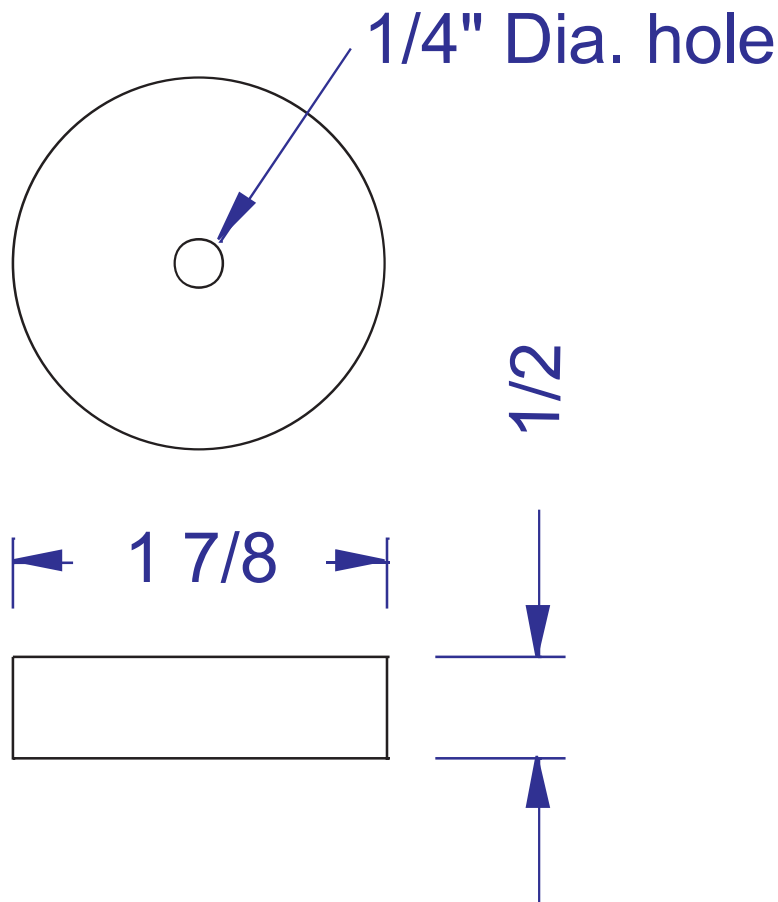
(1) 1/4" dia. drill through
Used as pivot point.
1/4" dia. Clevis pin works well
as pivot pin.

(4) Holes - drill for 1/4"-20 threaded inserts
Install steel, 1/4"-20 threaded inserts
Install 1-1/4" long, 1/4-20 thumb screws



(2) Holes, 5/16 dia. drill through

Optional Pivot Mount



Mount this disc to your workpiece using double sided tape or hot melt glue (or other "low adhesion" glue).

Other materials needed:

Items can be found in most hardware stores.

- (4) Steel, 1/4"-20 threaded inserts
- (4) 1-1/4" long, 1/4-20 thumb screws
- (1) 1/4" Dia. x 2" long clevis pin
- (2) 5/16" diameter steel rods - 36" length used in story

Hardware specific to DeWalt router model DW621

- (3) M6 x 20 MM socket head cap screws (Metric)
- Allen wrench to fit metric screw