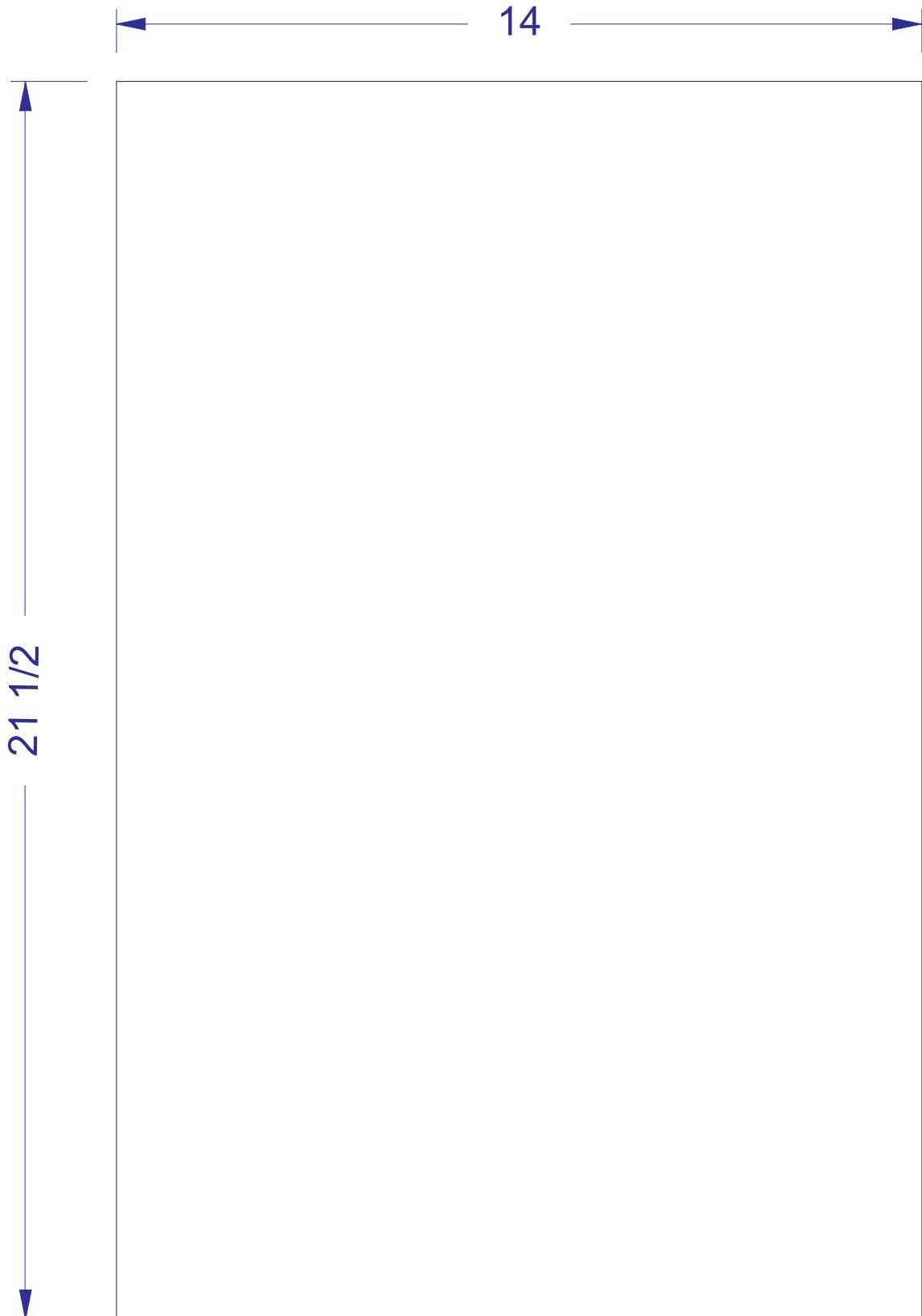


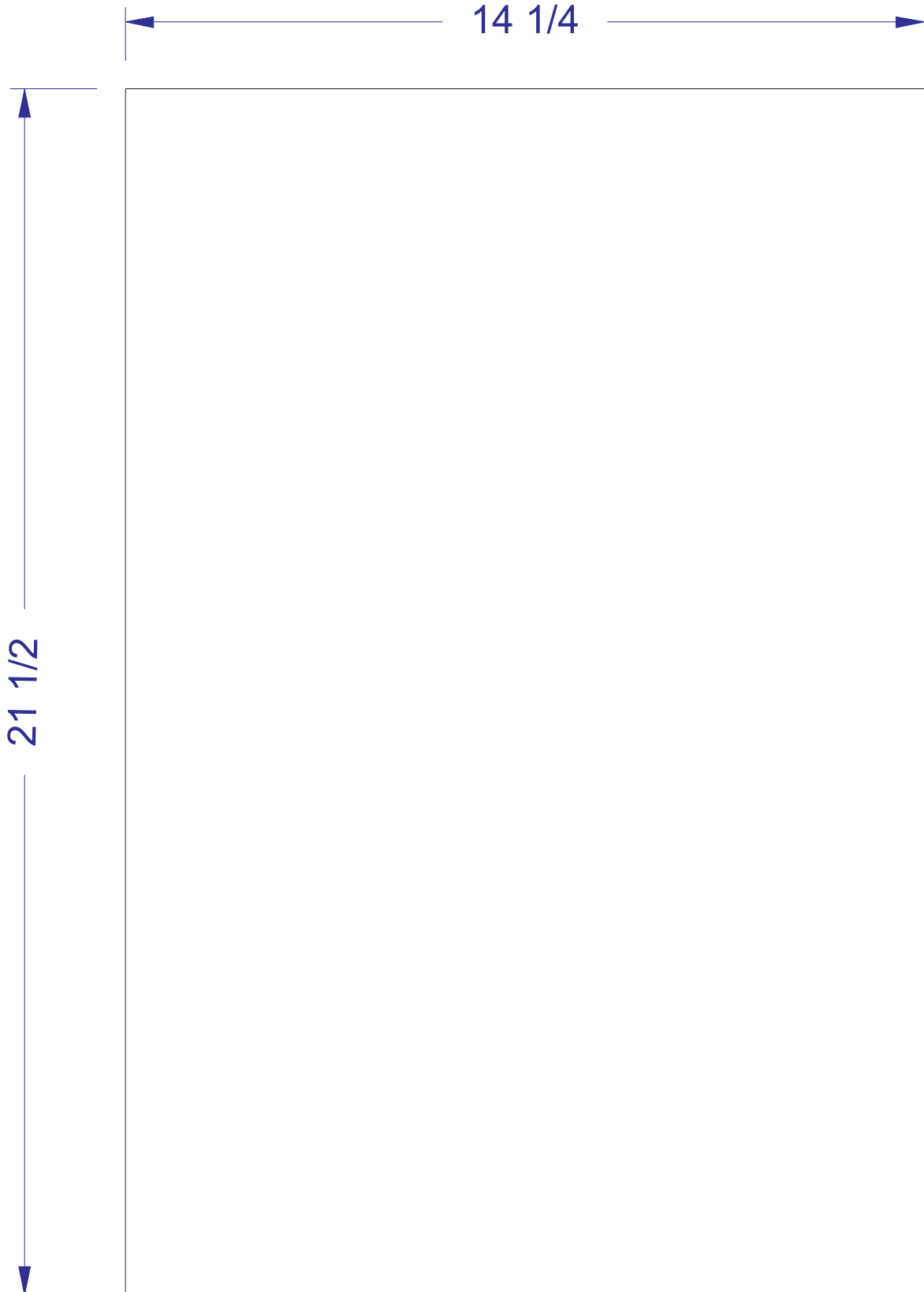
(1) Top - 1/2" Birch plywood



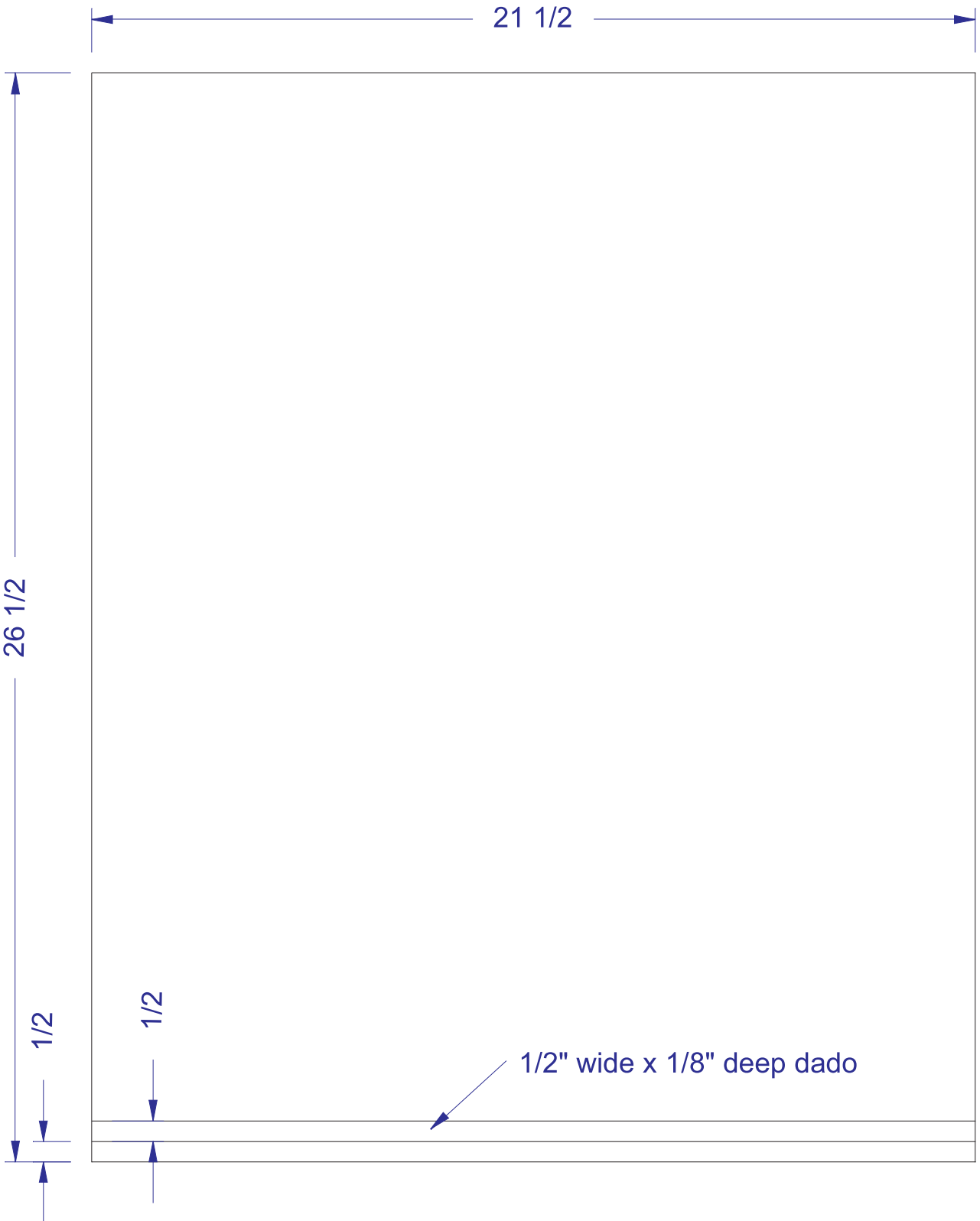
(1) Back - 1/2" Birch plywood



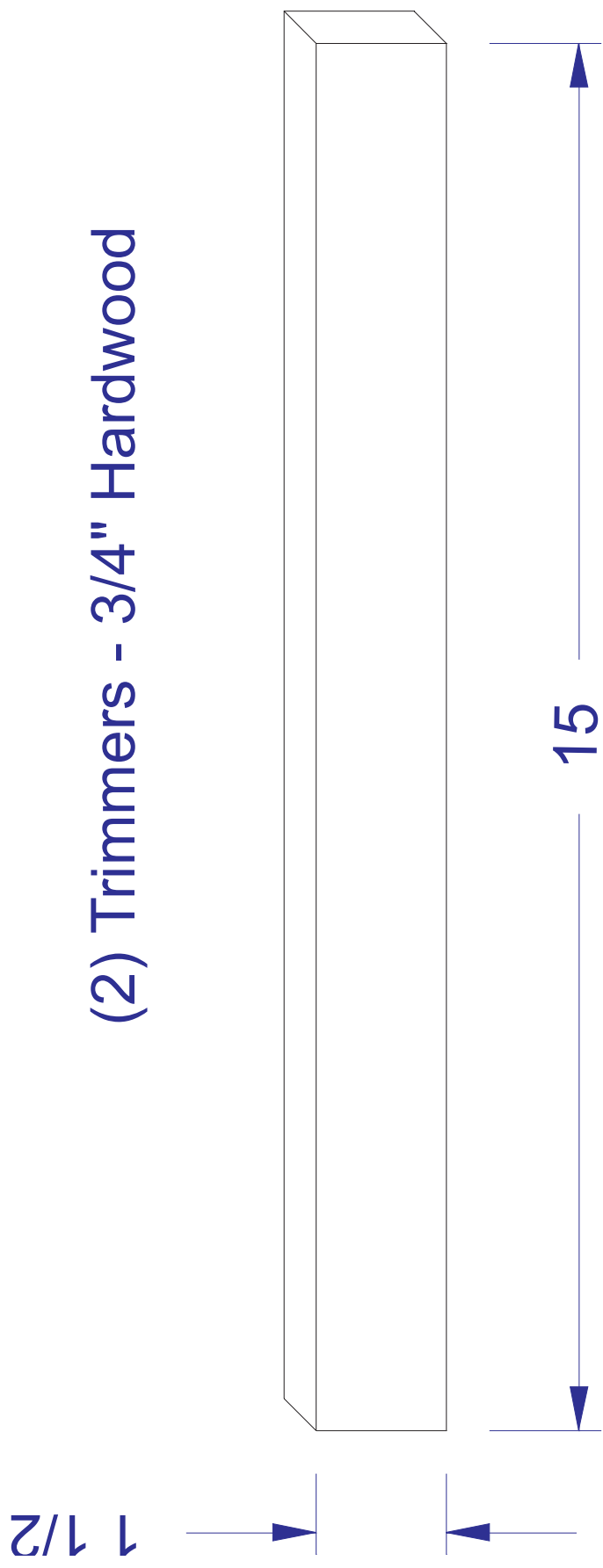
(1) Bottom - 1/2" Birch plywood



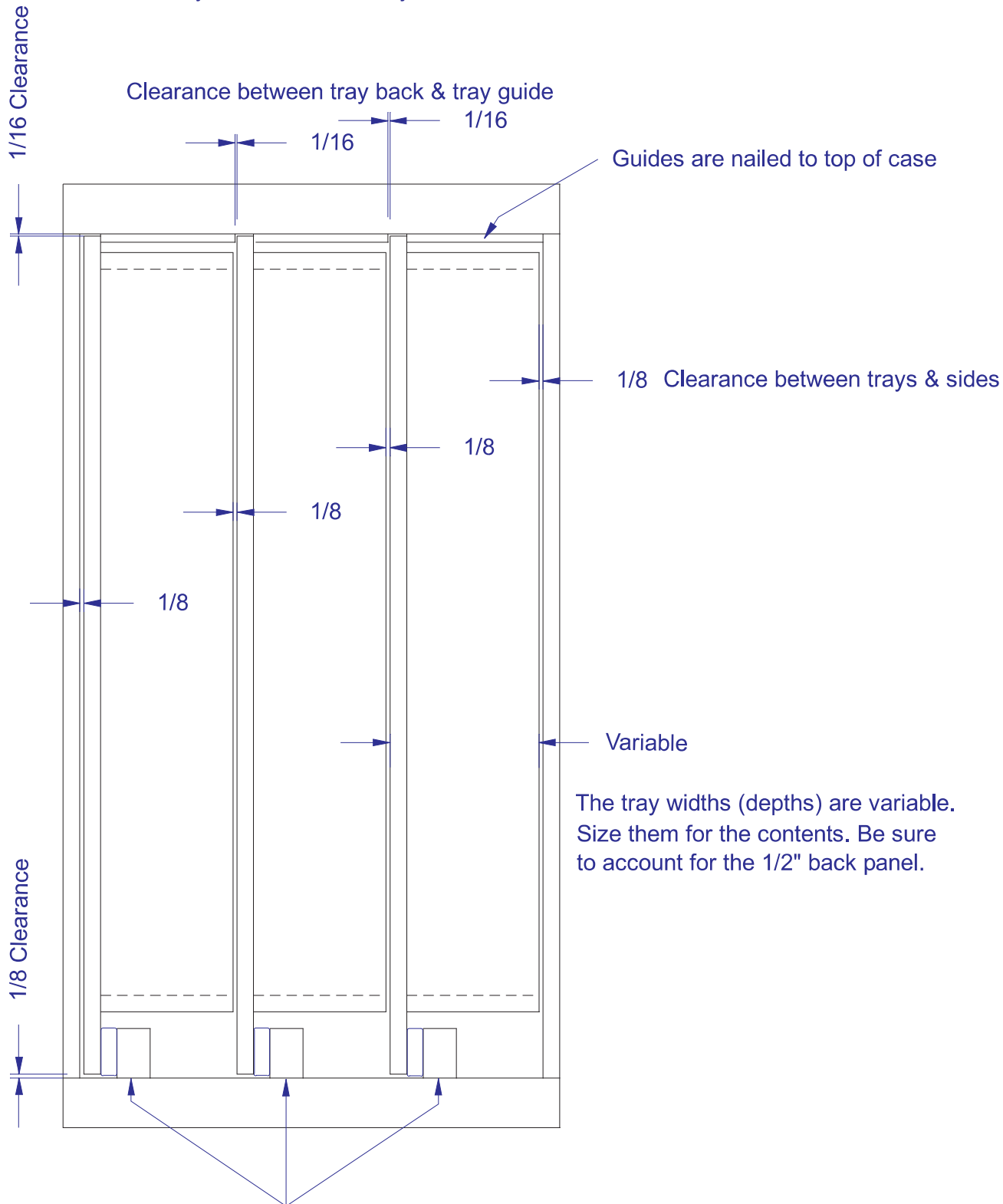
(2) Sides - 1/2" Birch plywood



(2) Trimmers - 3/4" Hardwood



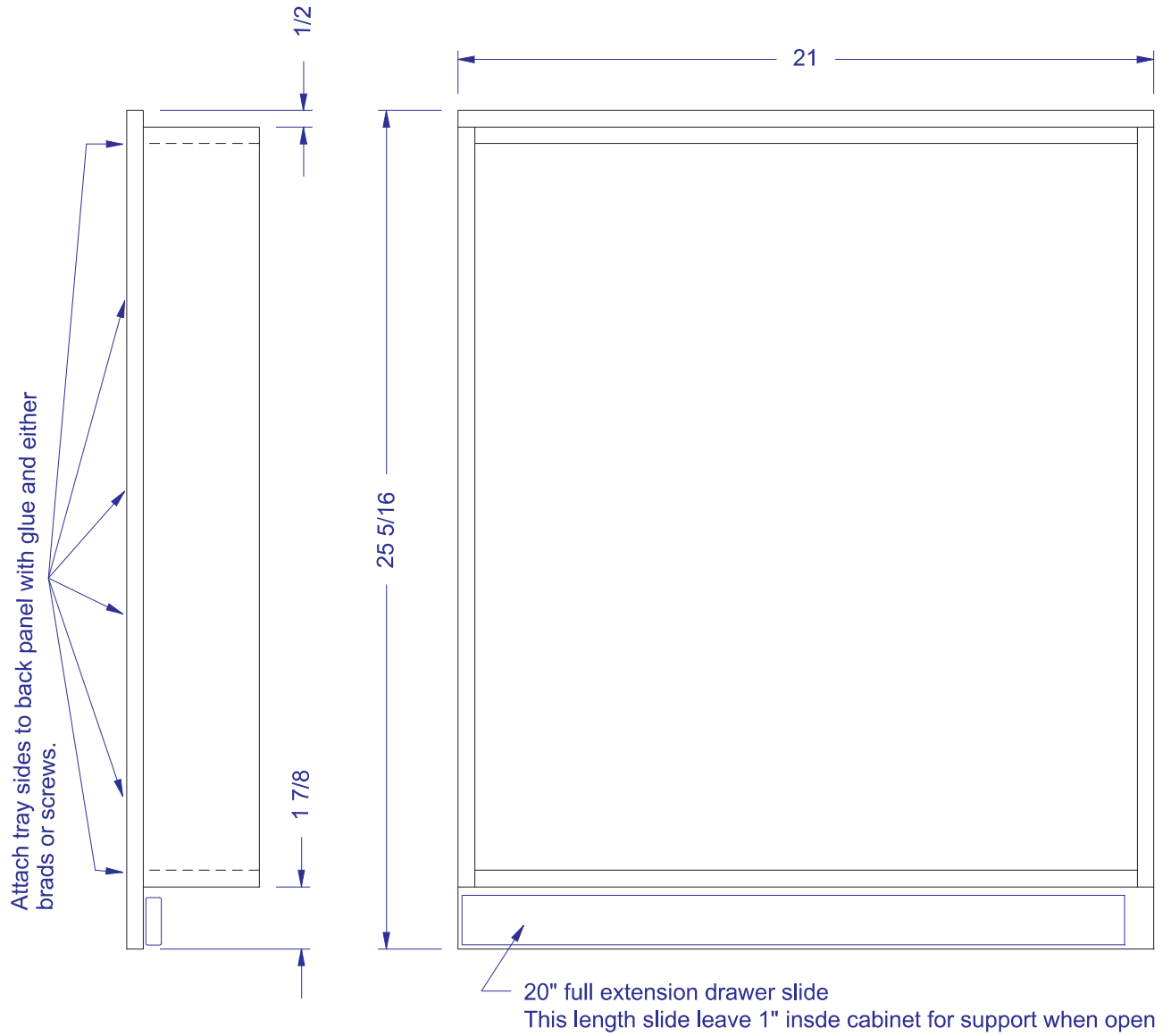
Tray Installation and Layout



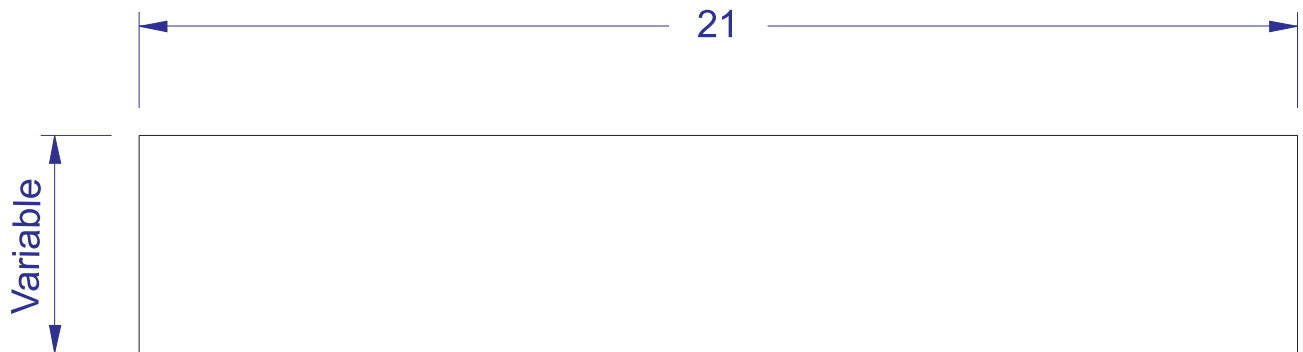
Use (4) #8 x 1 1/2" screws to attach guide support

Tray Construction

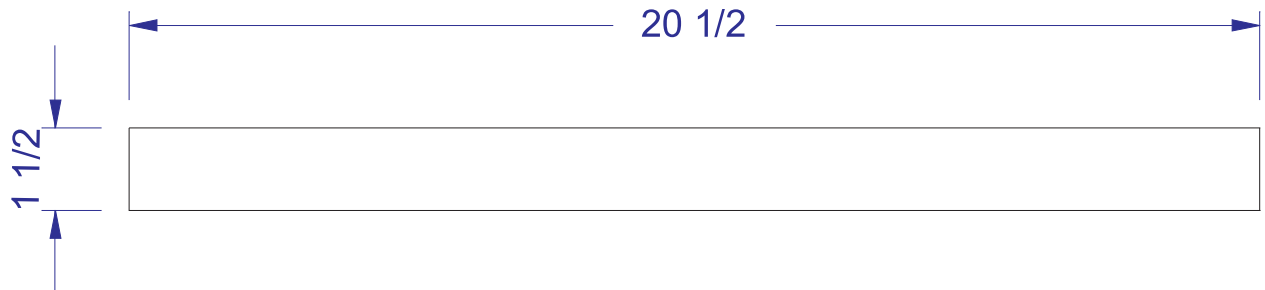
Construct the tray assembly from 1/2" birch plywood.



Upper Tray Guides
Make from 1/4" hardboard



Drawer (Tray) guide mounting support
Make from 1" hardwood



False Fronts
Make from 1/2" Birch plywood

