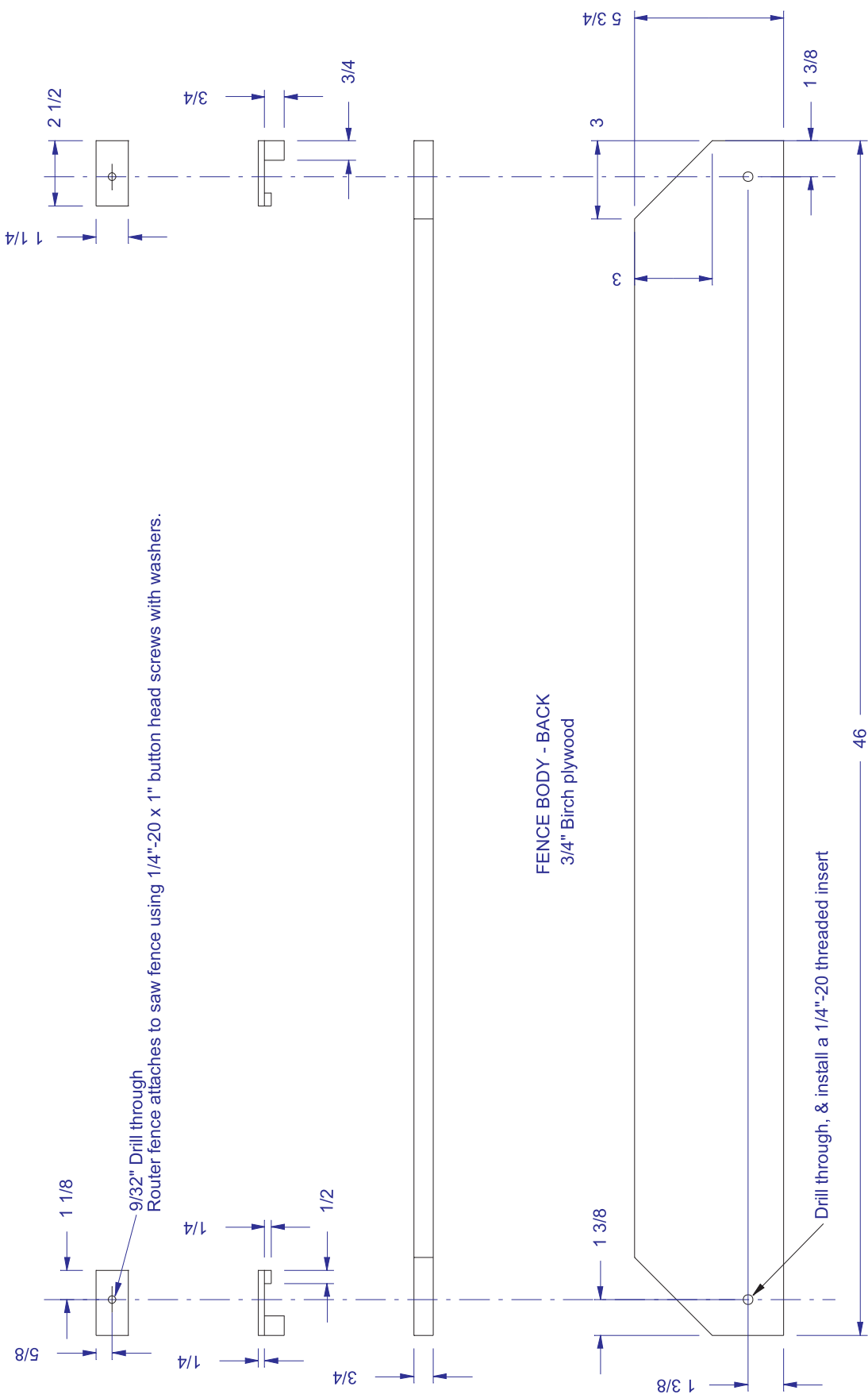
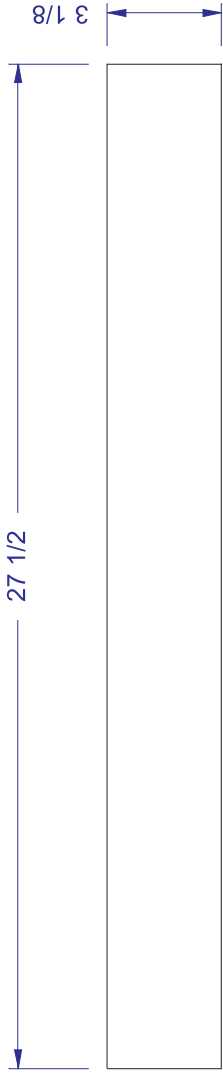


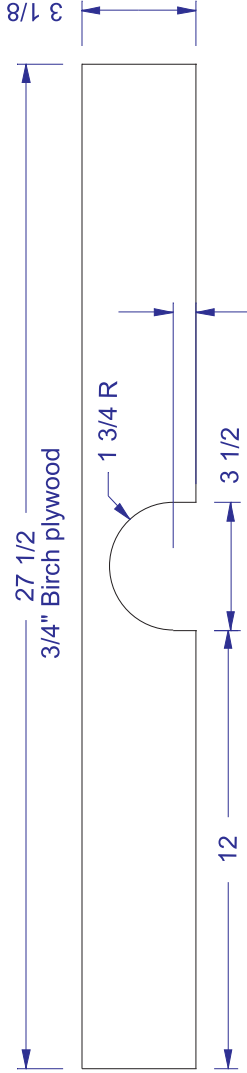
CLAMP (2)



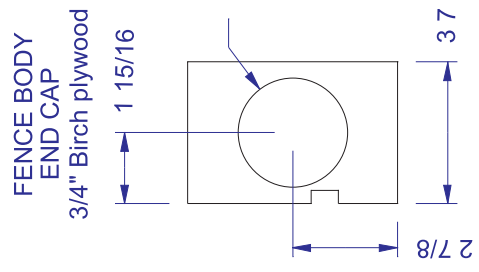
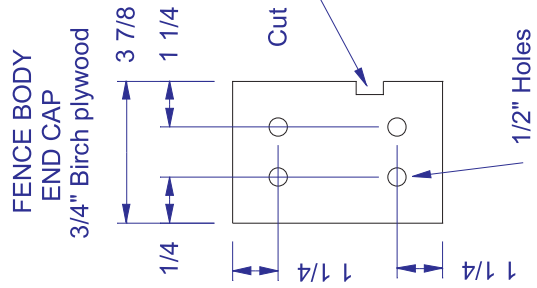
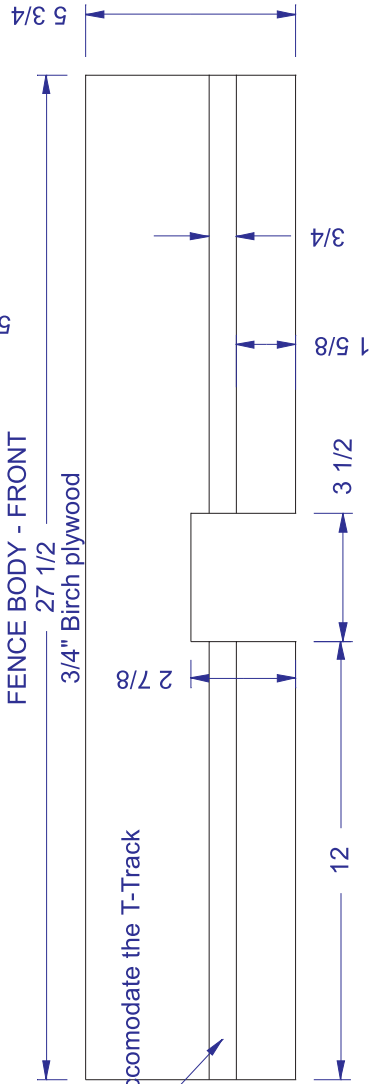
FENCE BODY - TOP  
3/4" Birch plywood



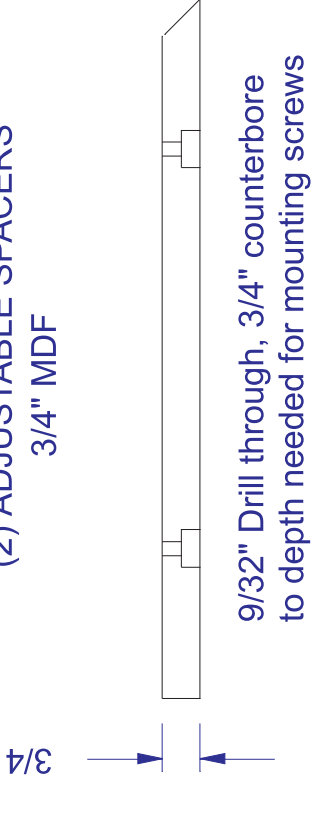
FENCE BODY - BOTTOM



FENCE BODY - FRONT

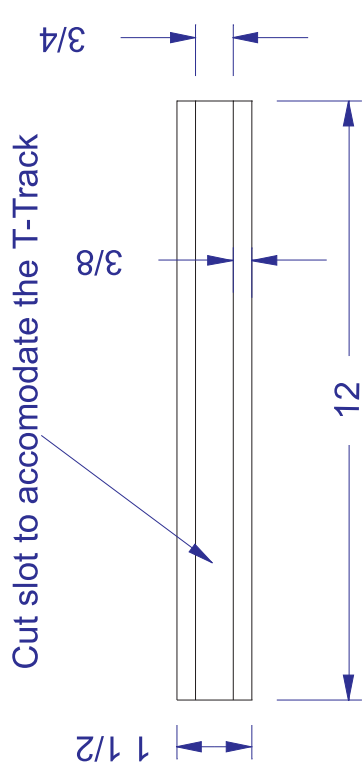


(2) ADJUSTABLE SPACERS  
3/4" MDF



Laminate all 6 sides with high pressure plastic laminate  
Attach to fence body with 1/4"-20 button head screws, washers, and T-Nuts.

ACCESSORY MOUNT  
3/4" MDF



Cut slot to accommodate the T-Track

Laminate all 6 sides with high pressure plastic laminate  
Fasten to fence body with screws through T-Track and accessory mount.

You will need a total of 3' of aluminum T-Track. When purchasing the T-Track, be sure to also purchase T-nuts that will work with the T-Track. The other hardware items (threaded inserts, button head screws, washers, etc.) can be purchased at most home centers and hardware stores.

