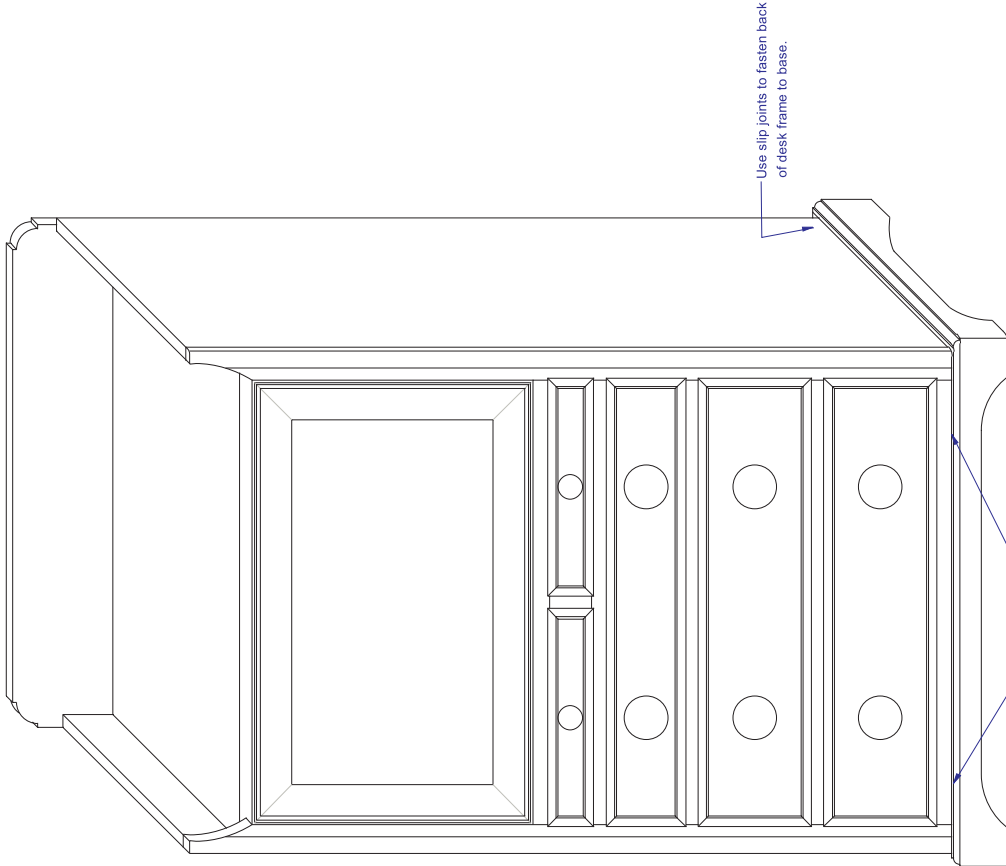


Front view showing single drawer front option for bottom drawer



Use slip joints to fasten back of desk frame to base.

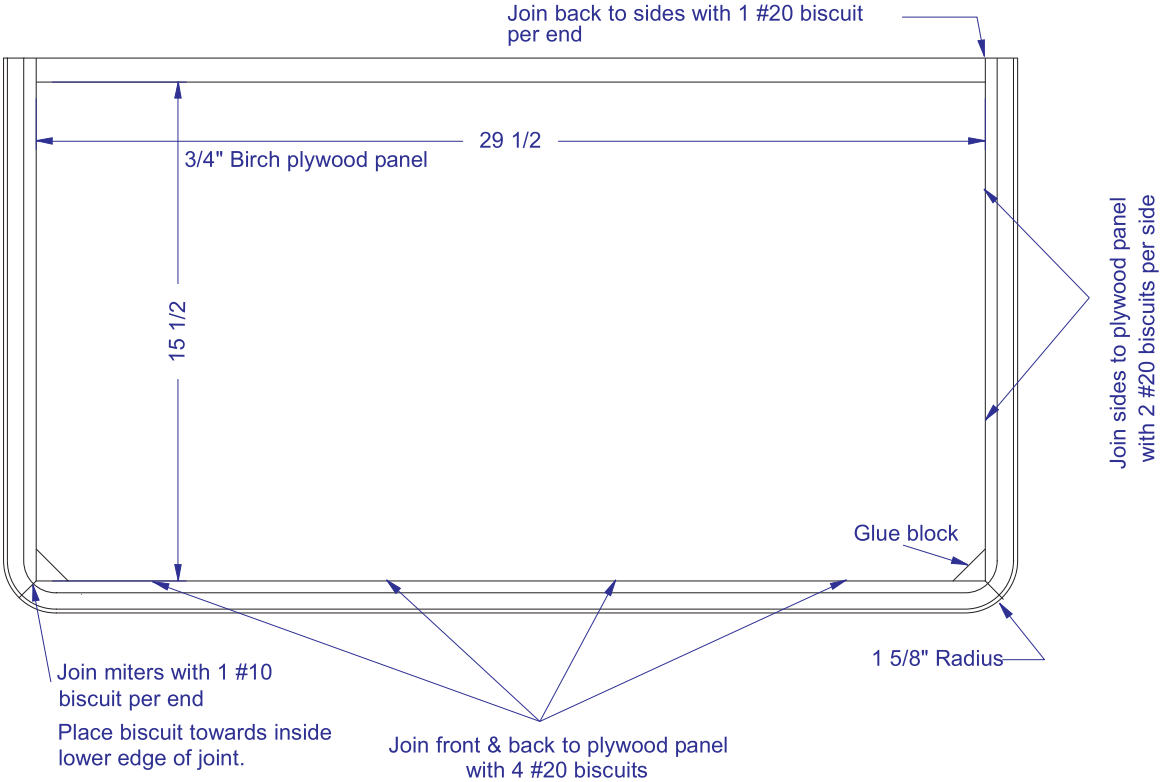
Attach front rail to base using #8 x 1/4\" wood screws

Front view showing double drawer front option for bottom drawer

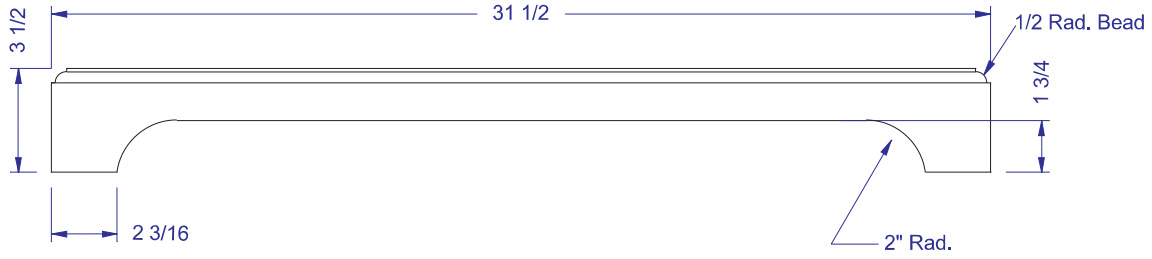
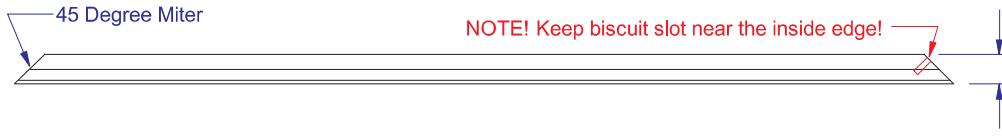
Base Assembly



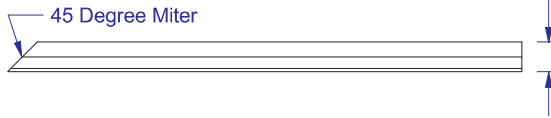
Note, locate biscuit near bottom edge



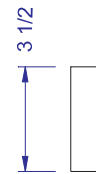
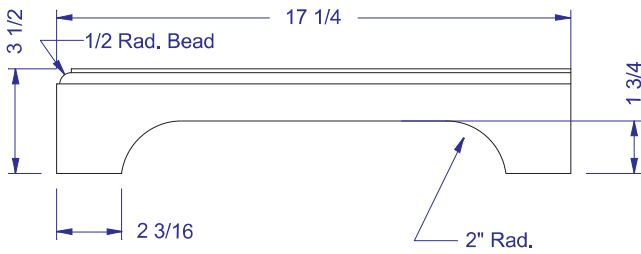
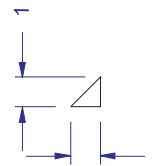
Base front - 1" Maple



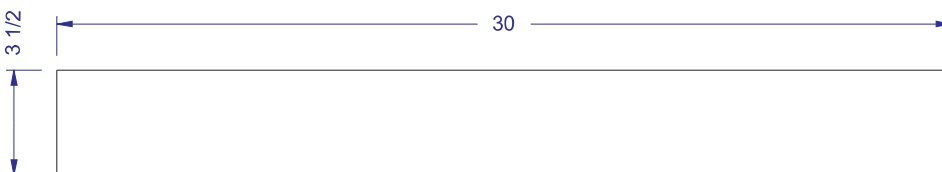
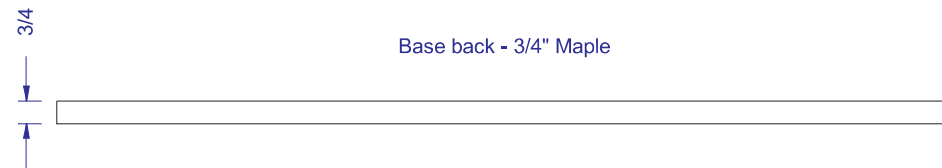
(2) Base side - 1" Maple
(right side shown)



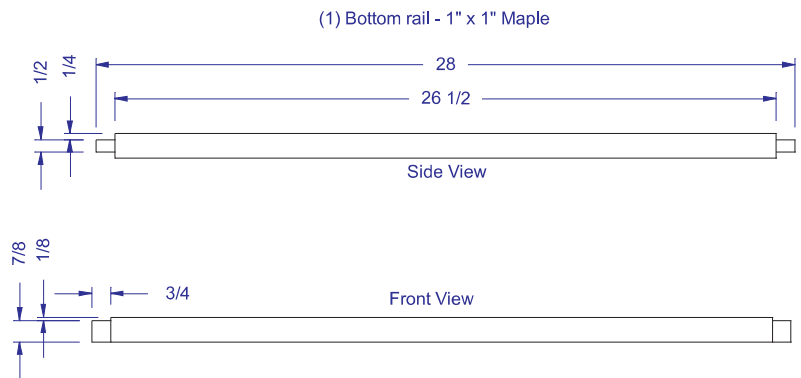
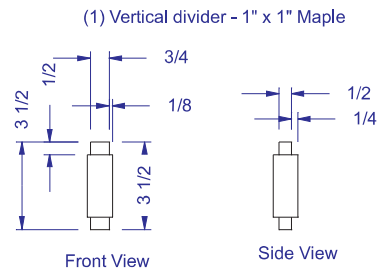
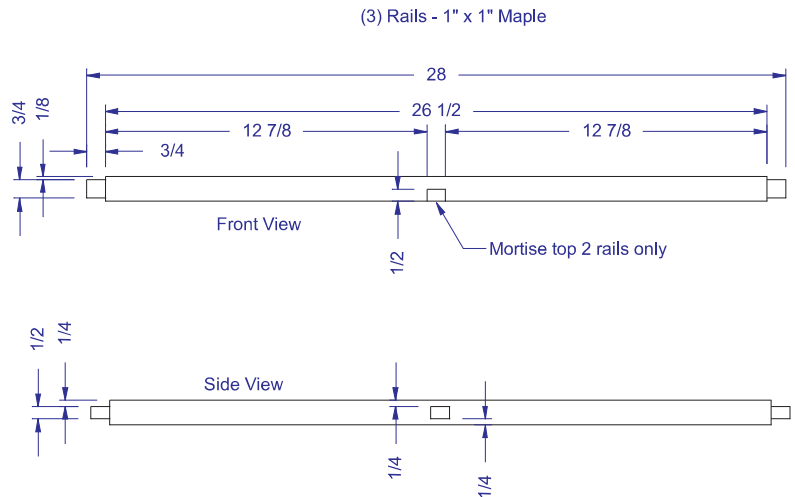
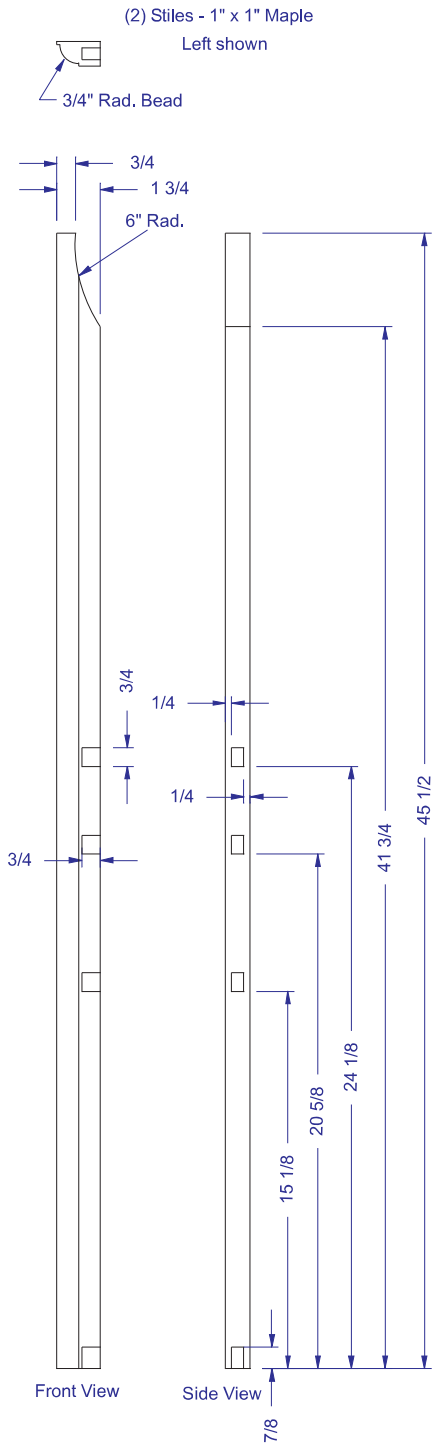
(2) Glue blocks



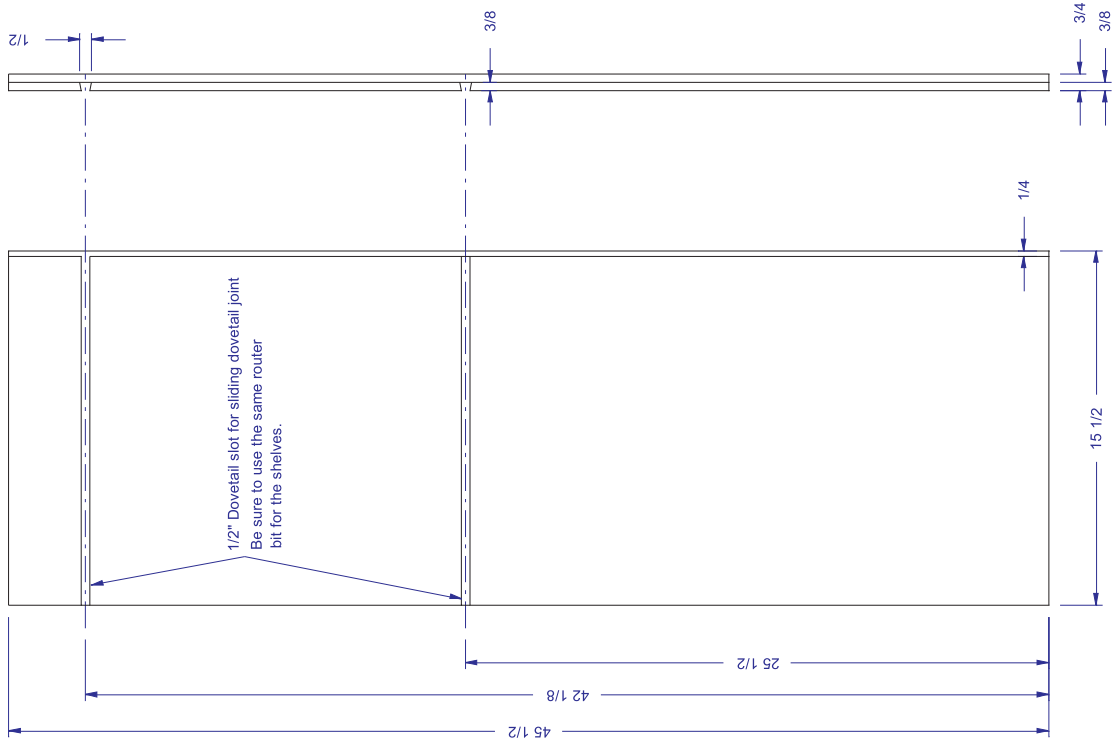
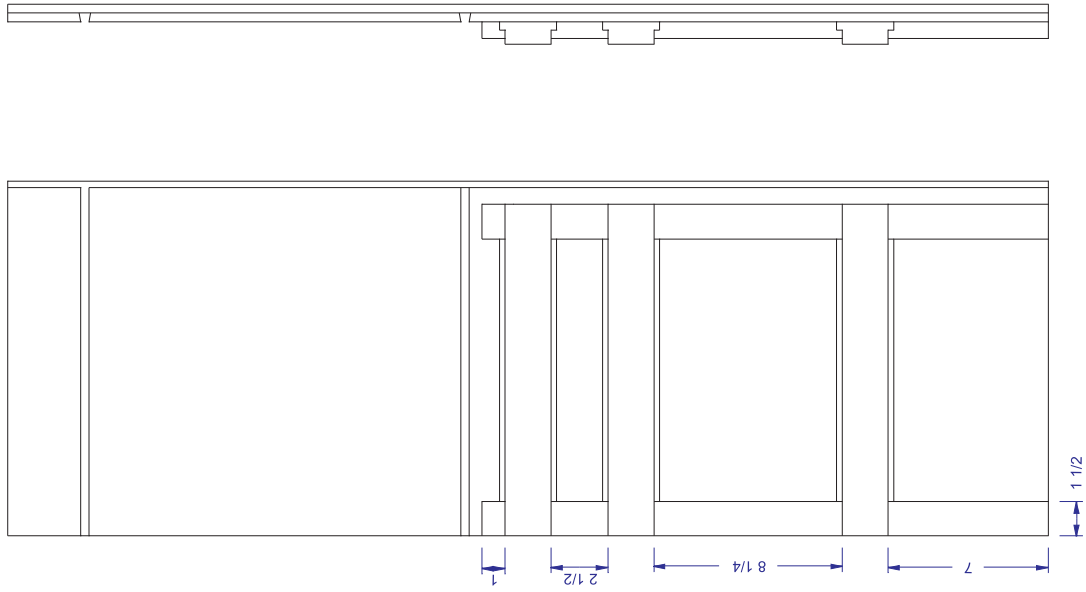
Base back - 3/4" Maple

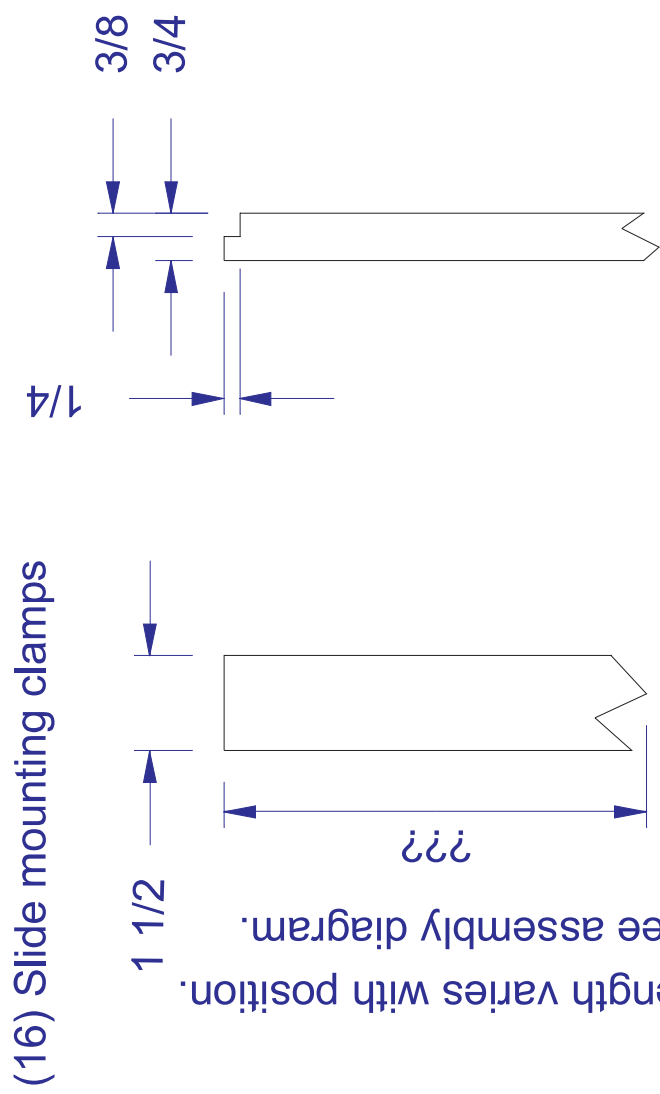
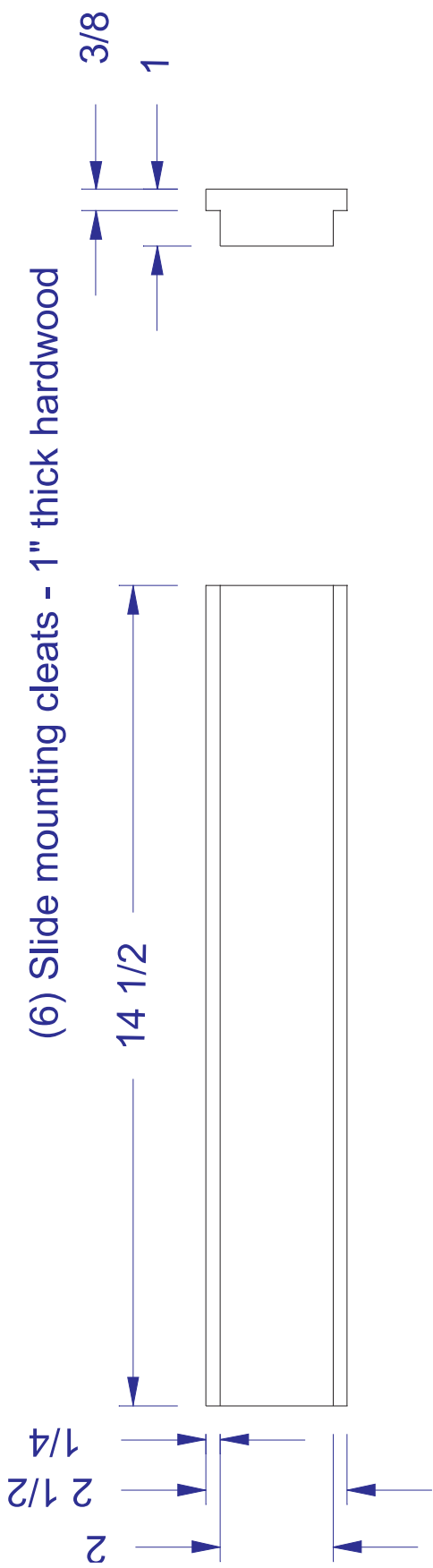


Fasten face frame to desk sides using #20 biscuits - 6 per side

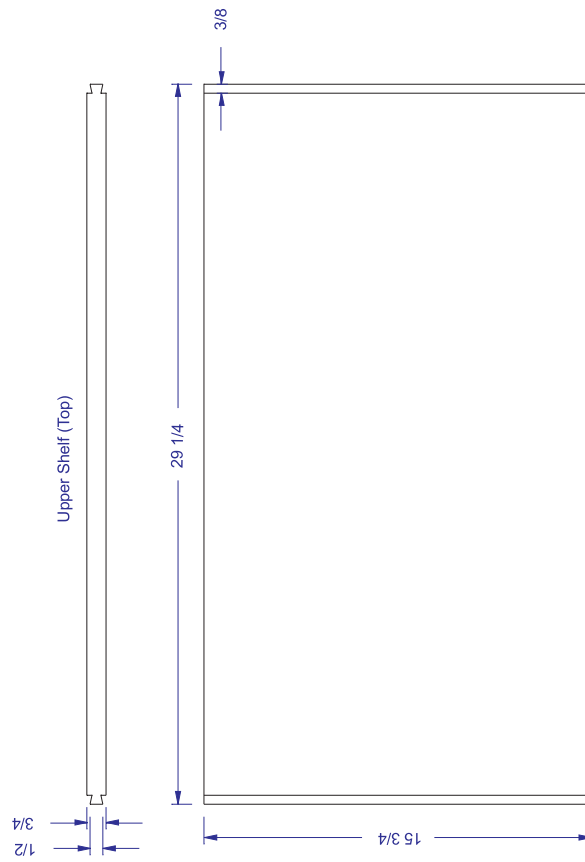
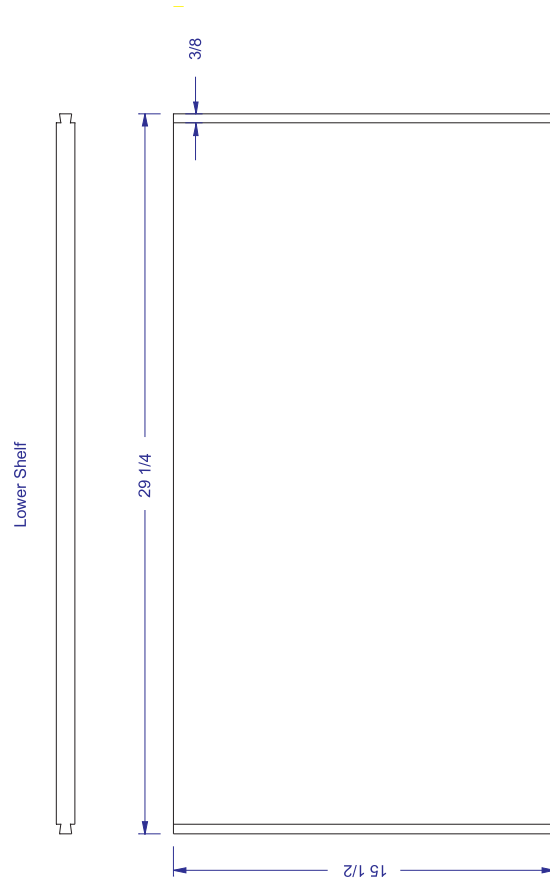


Side Panel Assembly Diagram
Slide mounting cleats and clamps

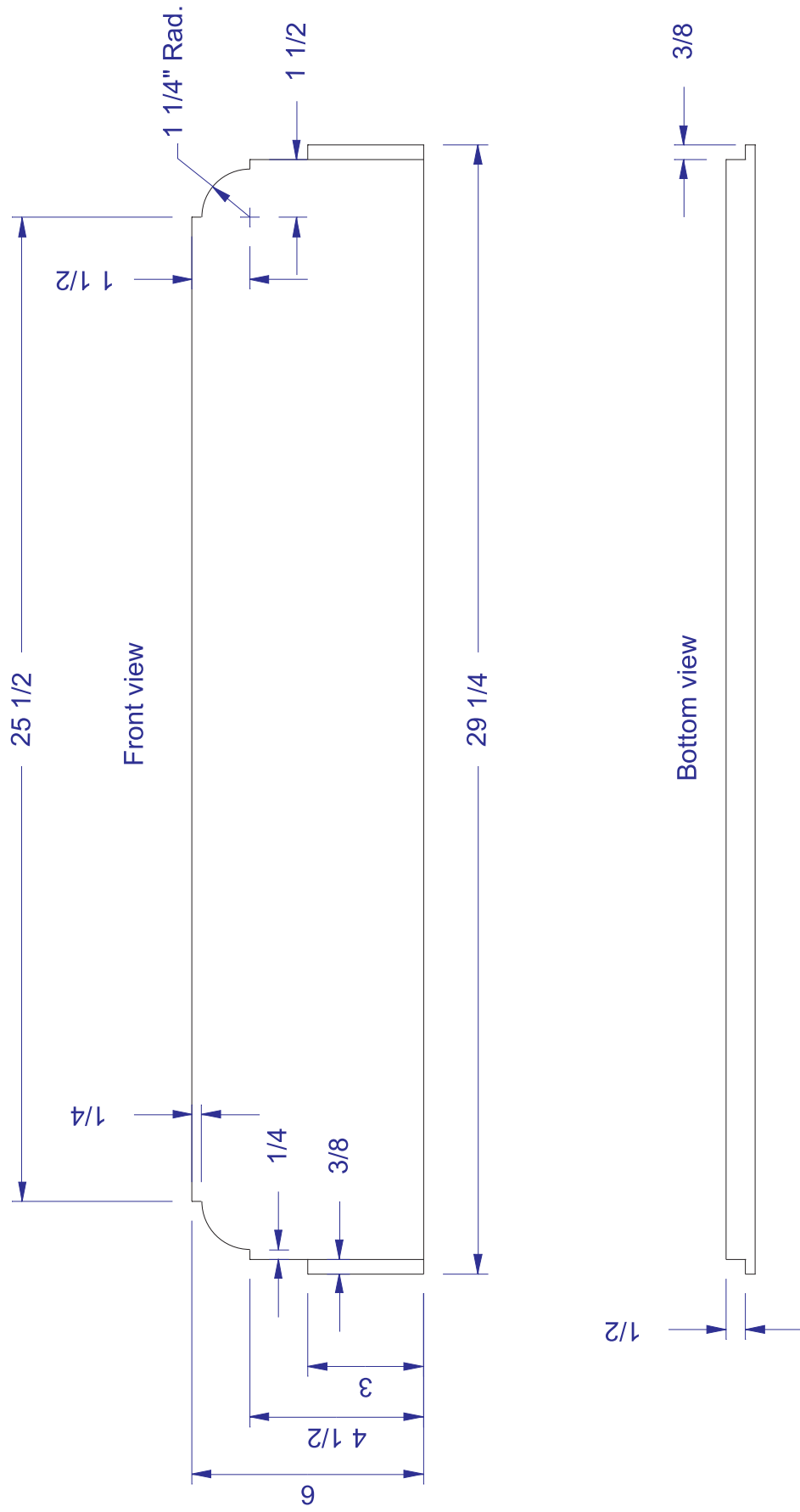




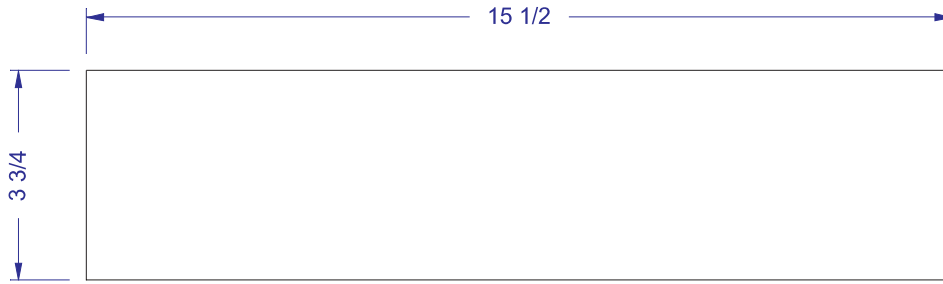
Length varies with position.
See assembly diagram.



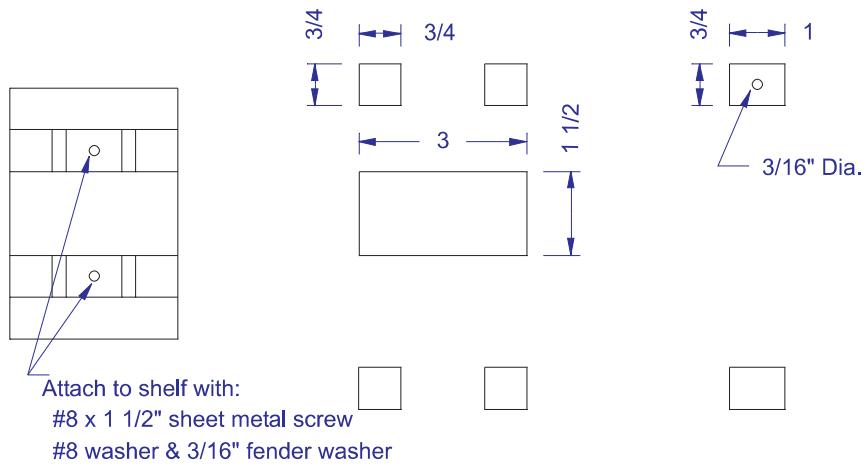
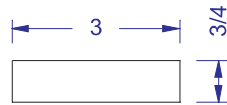
Crest rail - 3/4" Maple



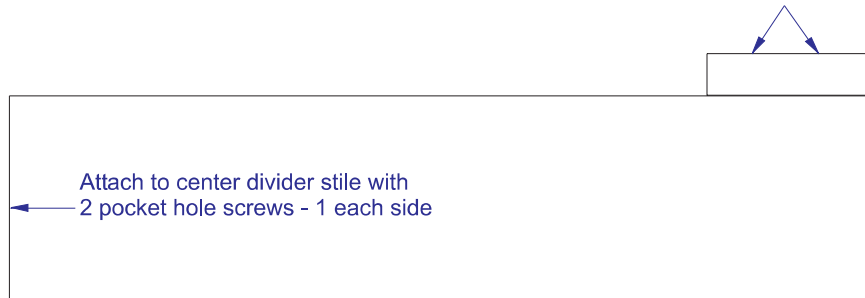
Center Divider - Drawer Slide Mount - 1" Maple



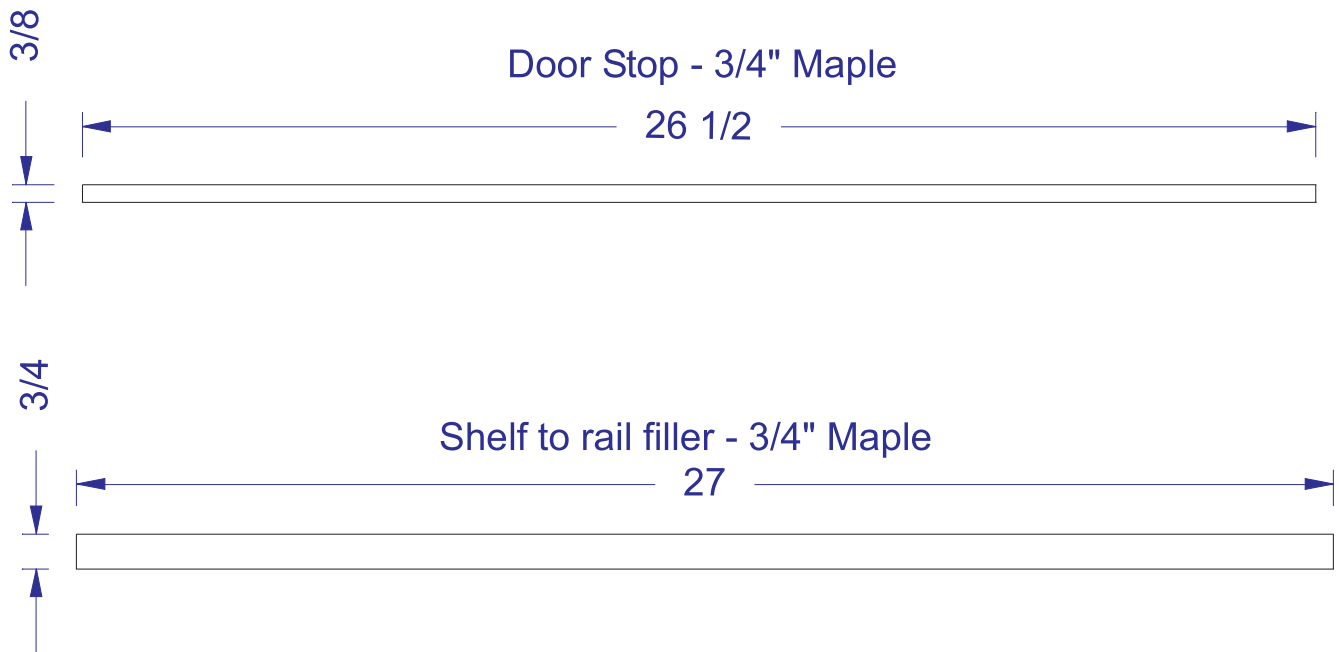
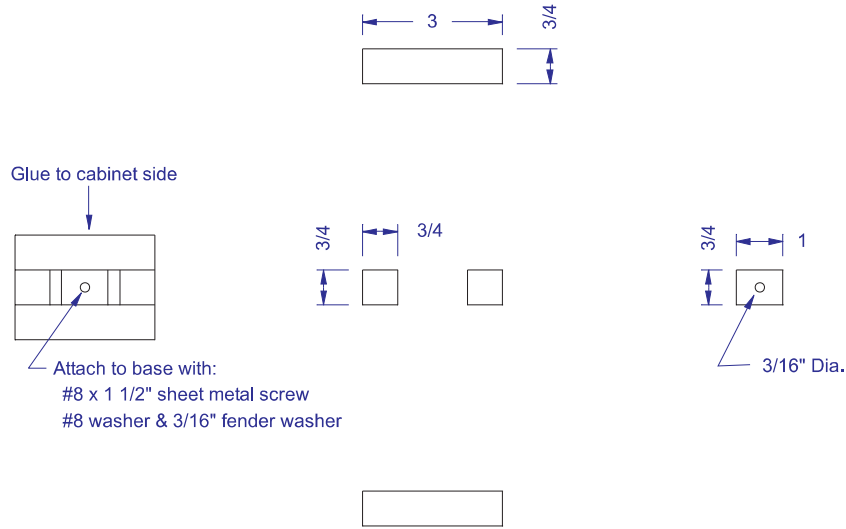
Center Divider - Slip Joint - 3/4" Maple



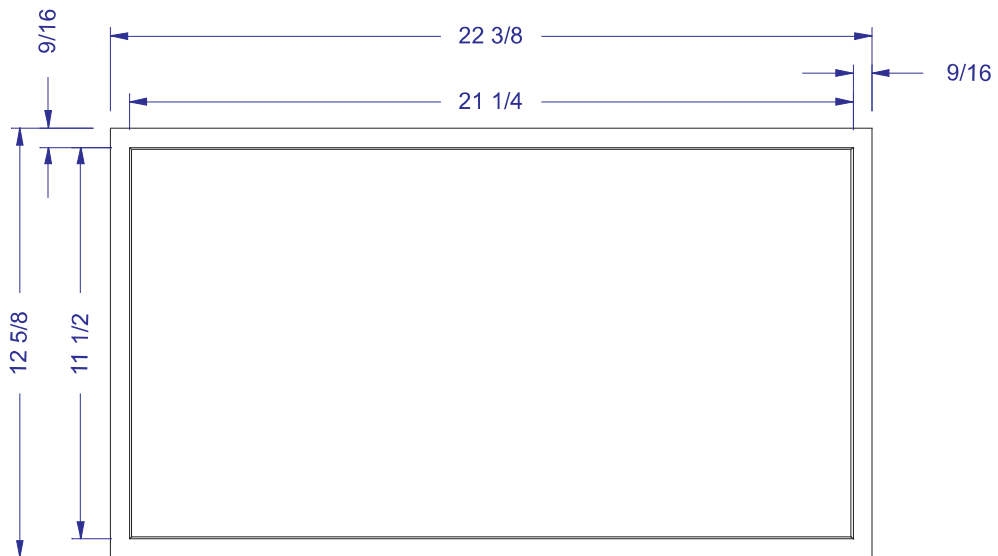
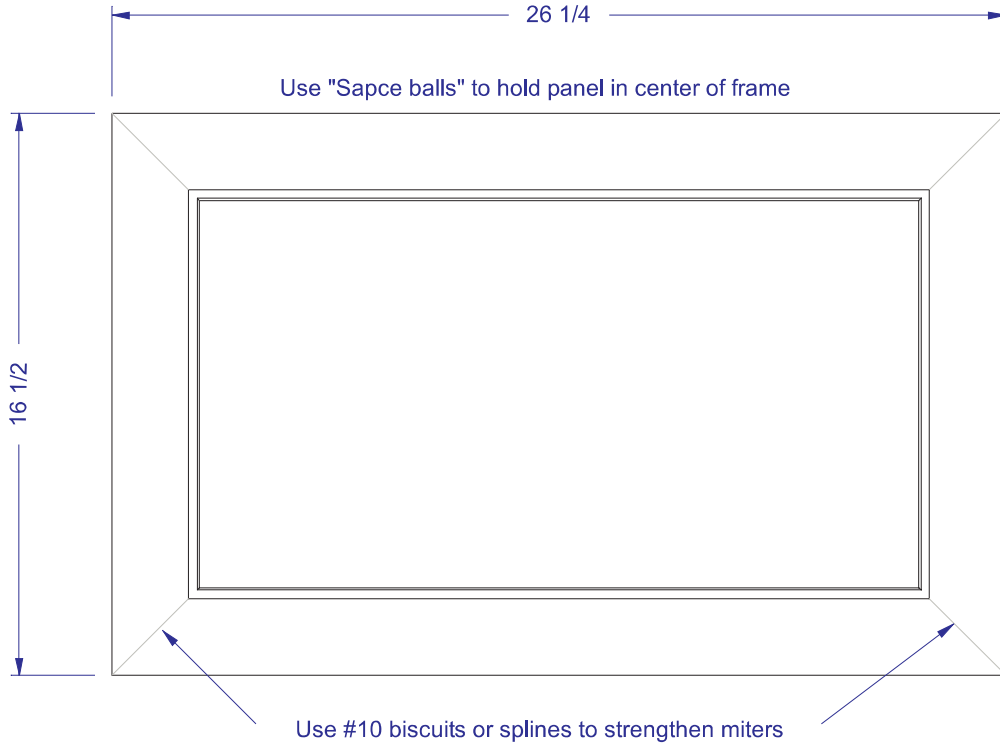
Attach slip joint with (2)
#8 x 1 1/2" Wood screws



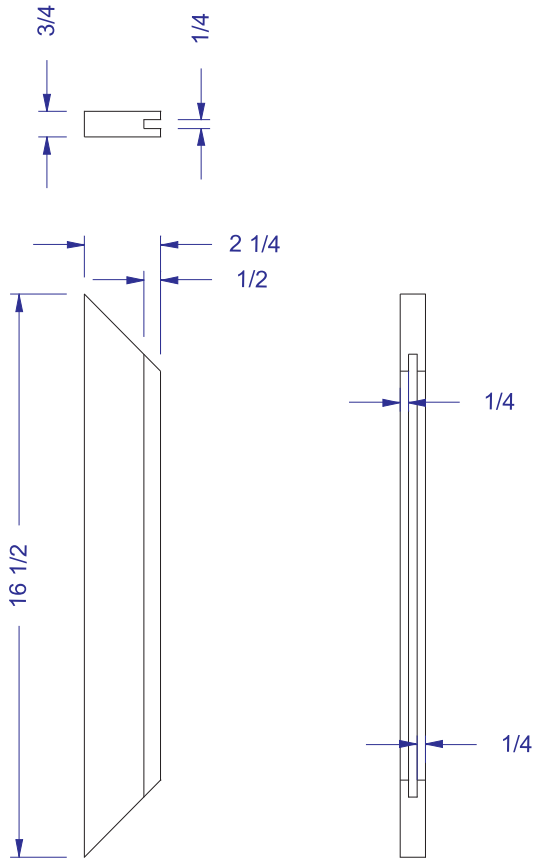
(2) Base Mount - Slip Joint - 3/4" Maple



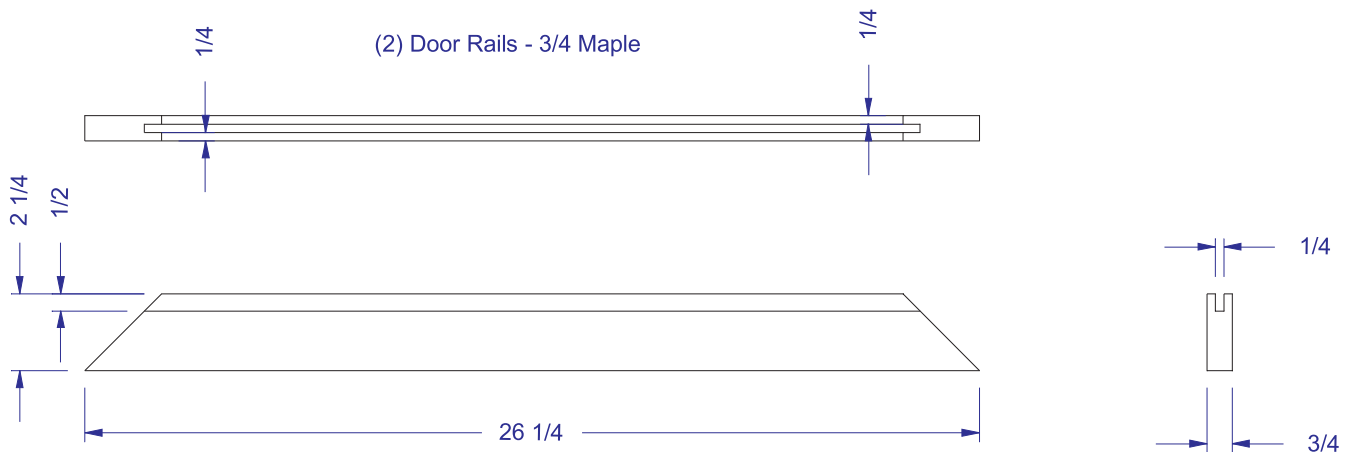
Door assembly

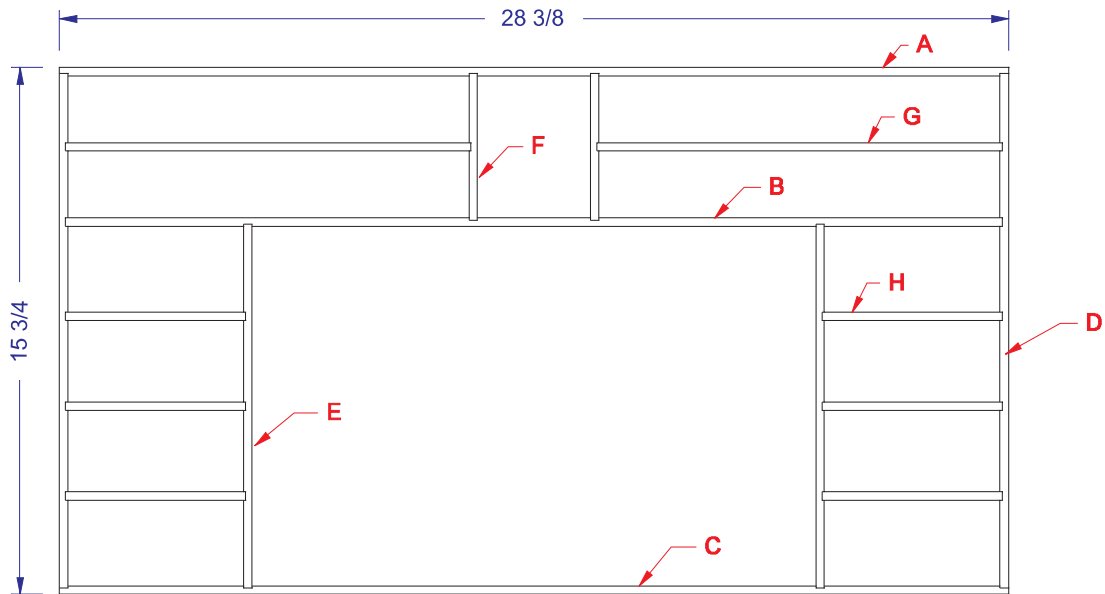


(2) Door Stiles - 3/4 Maple

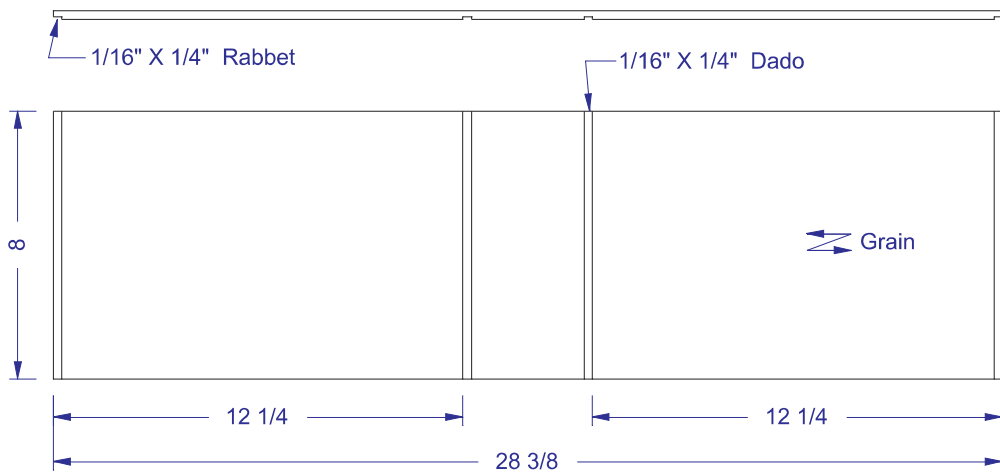


(2) Door Rails - 3/4 Maple

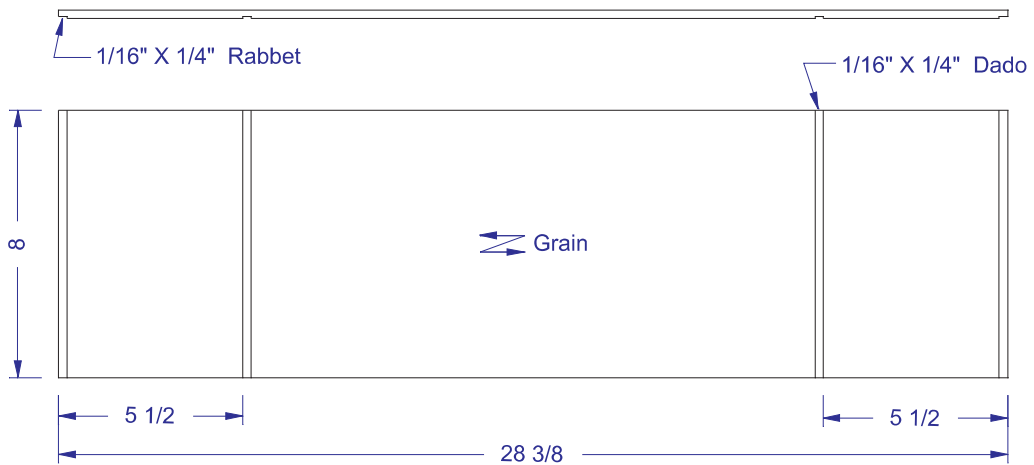




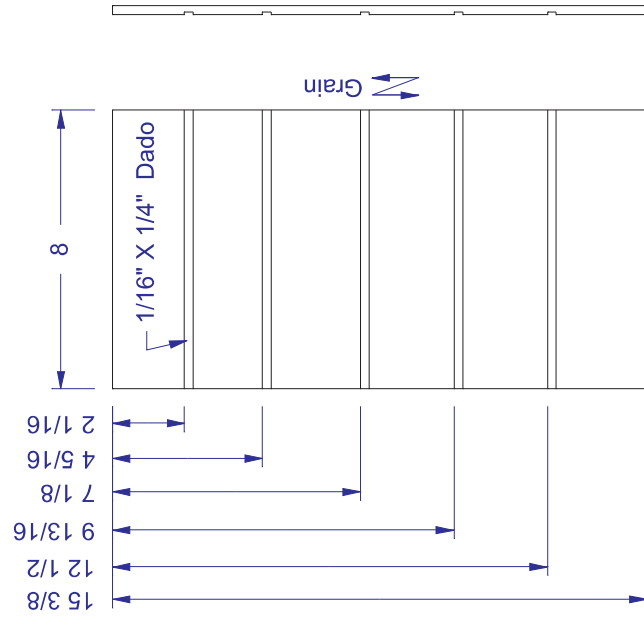
(1) - A - 1/4" Maple



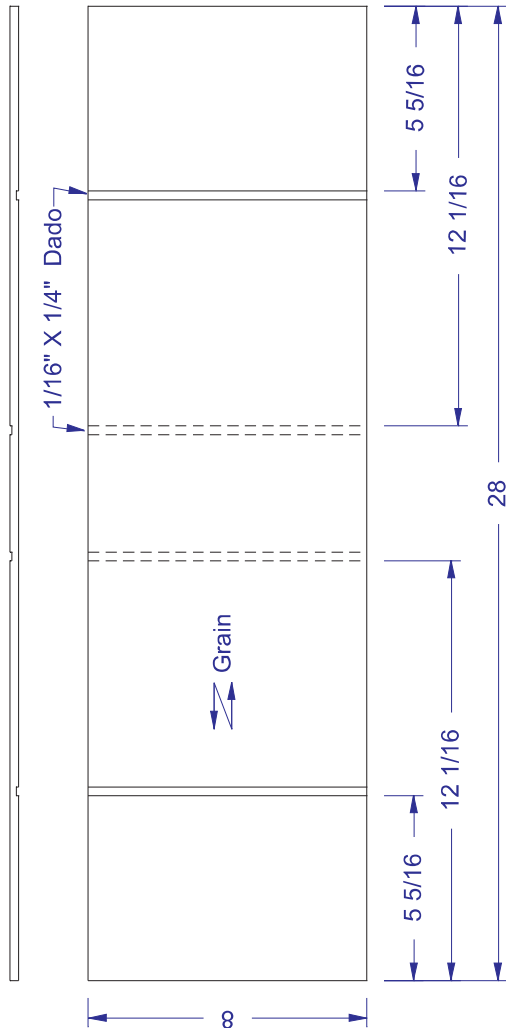
(1) - C - 1/4" Maple



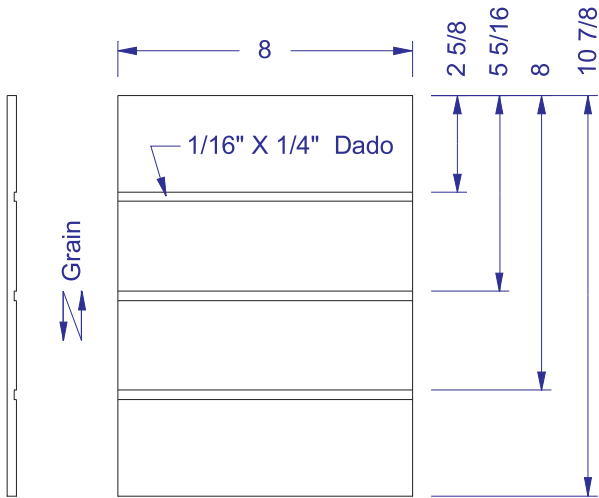
(2) - D - 1/4" Maple



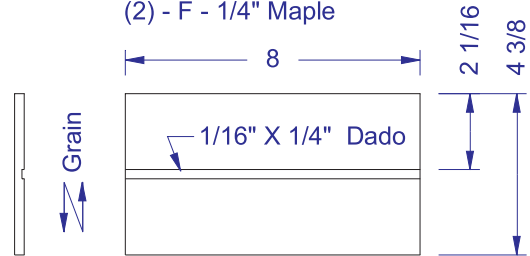
(1) - B - 1/4" Maple



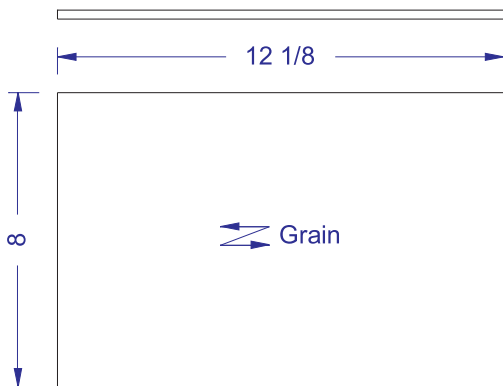
(2) - E - 1/4" Maple



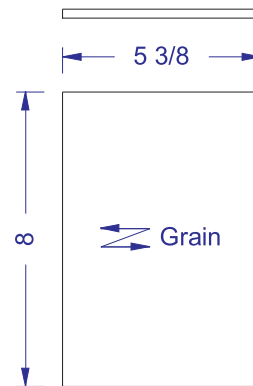
(2) - F - 1/4" Maple



(2) - G - 1/4" Maple

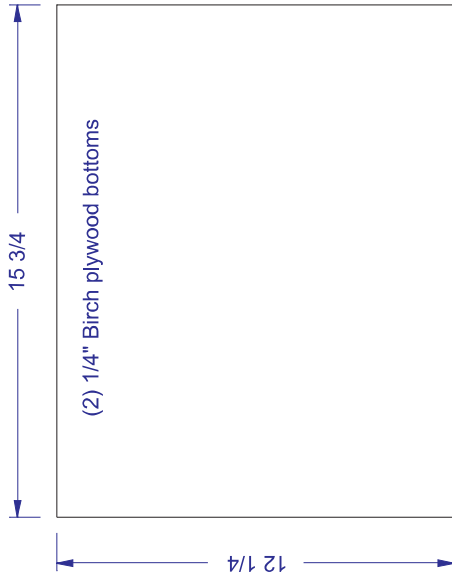
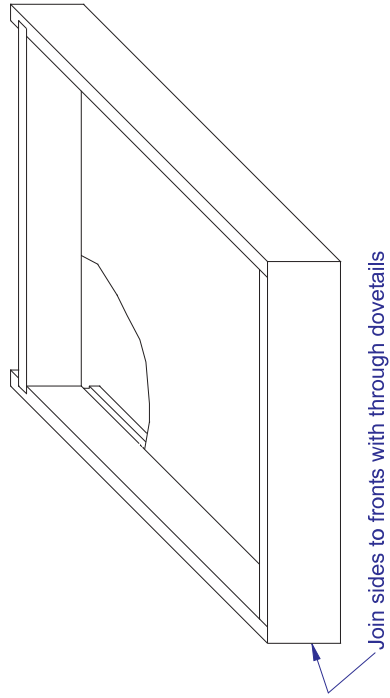
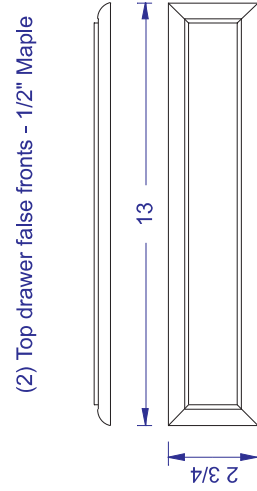
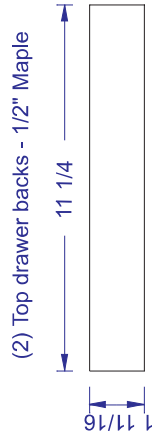
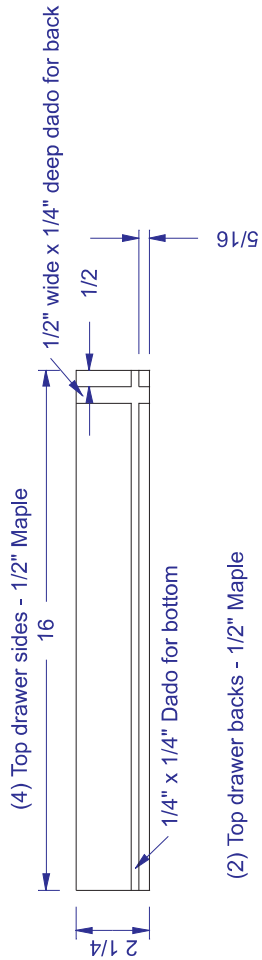
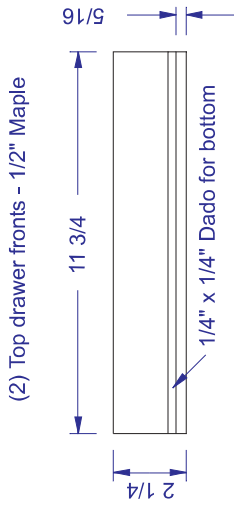


(6) - H - 1/4" Maple

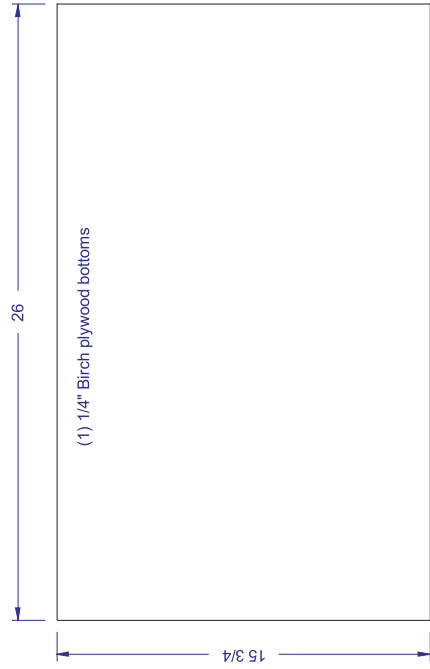
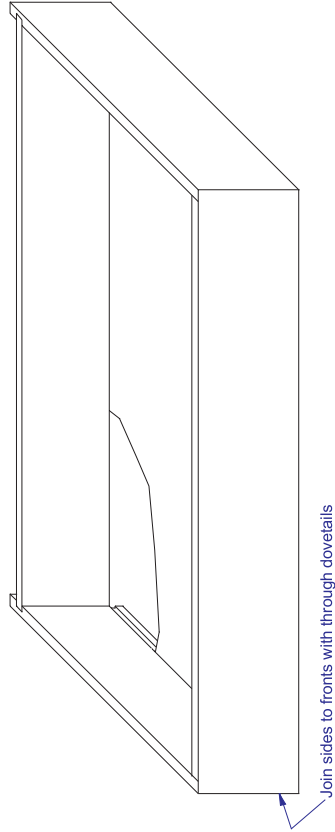
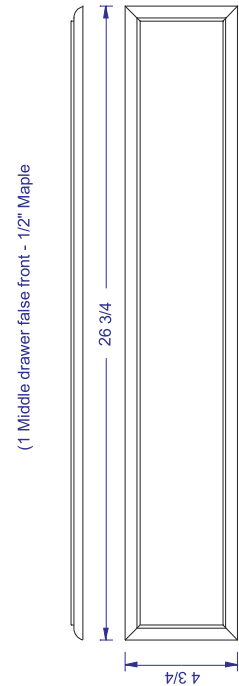
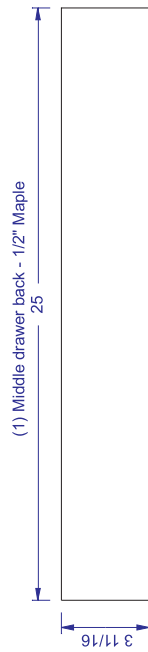
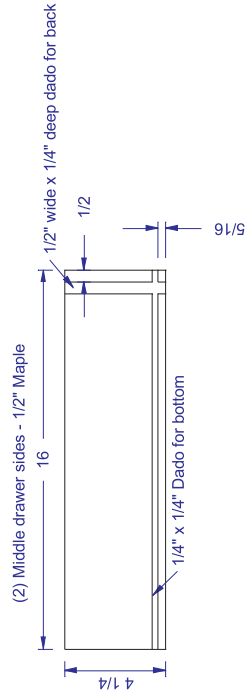
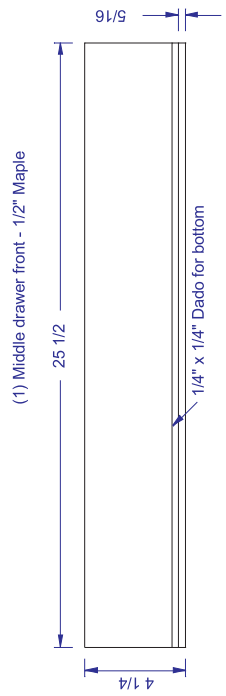


Top Drawers

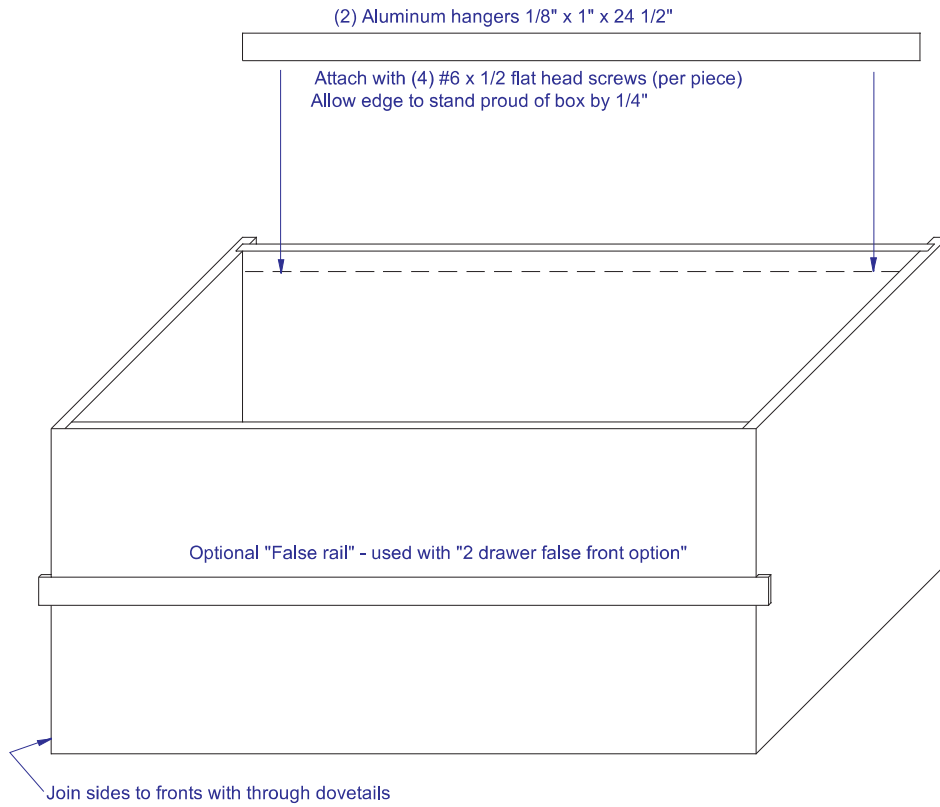
All drawers mount with 16" full extension slides
 (4) pairs of slides needed



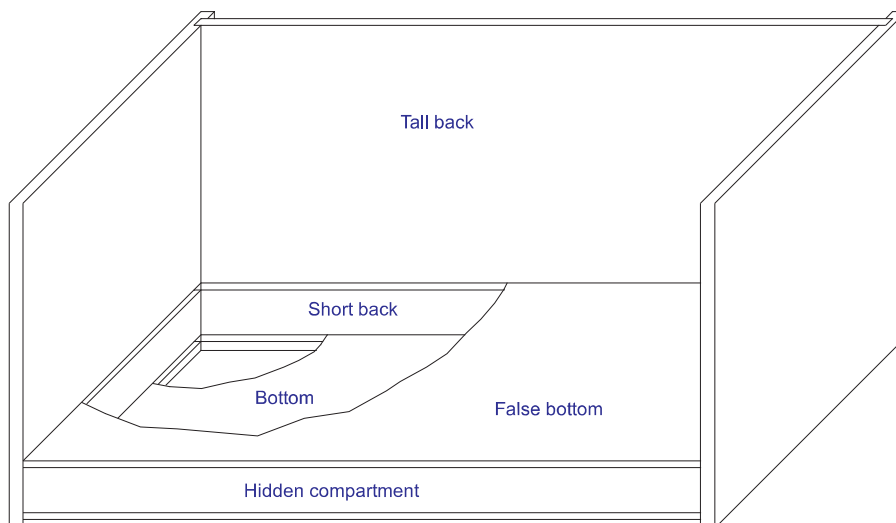
Middle Drawer



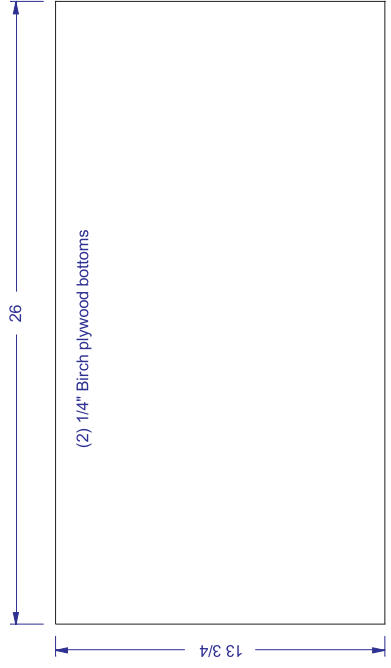
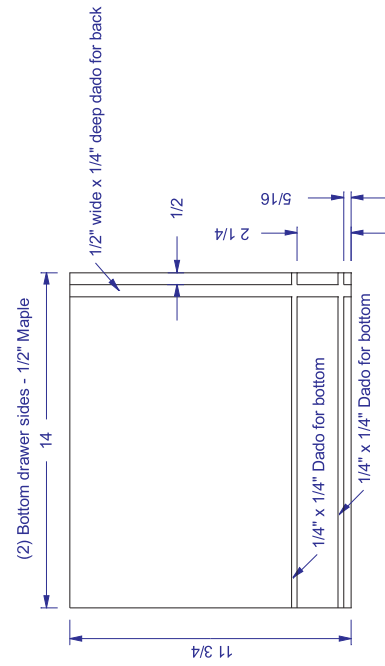
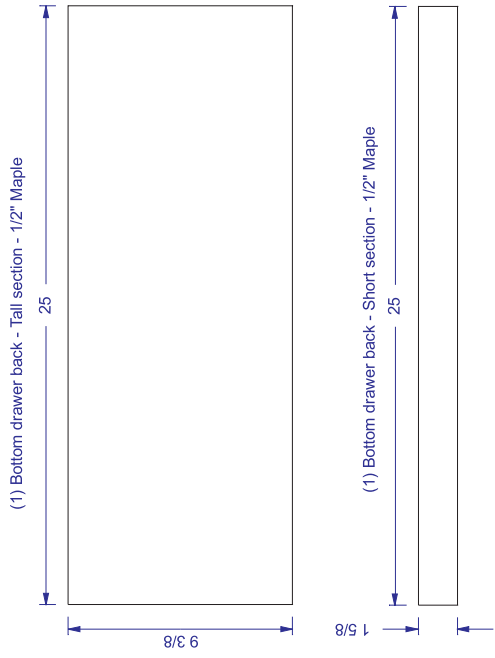
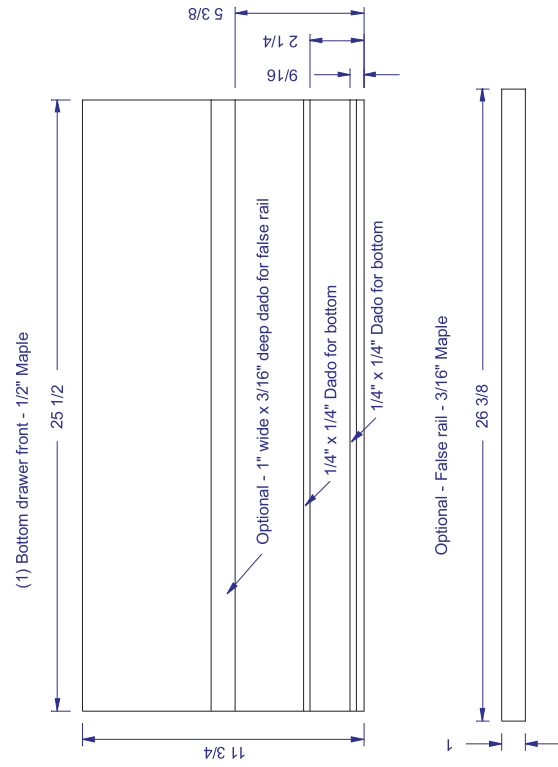
Bottom Drawer



Inside view (Front panel removed)

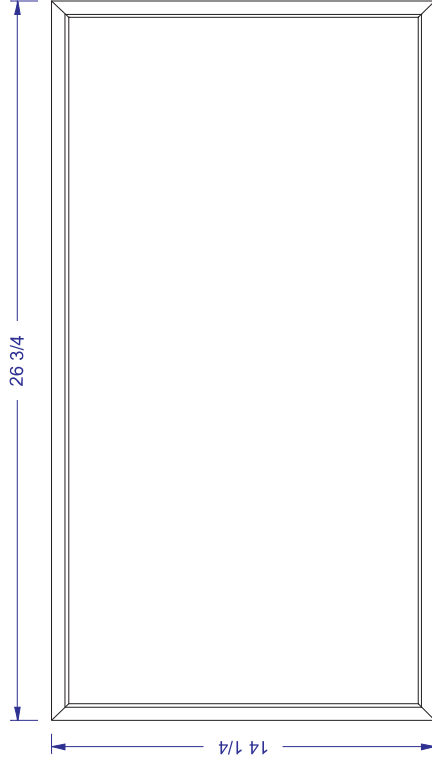


Bottom Drawer

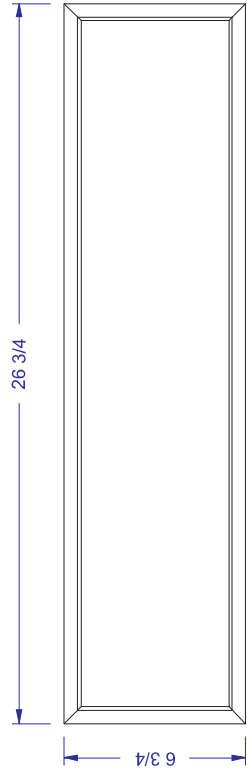


Glue a canvas (or other fabric) flap onto back edge of false bottom for easy removal

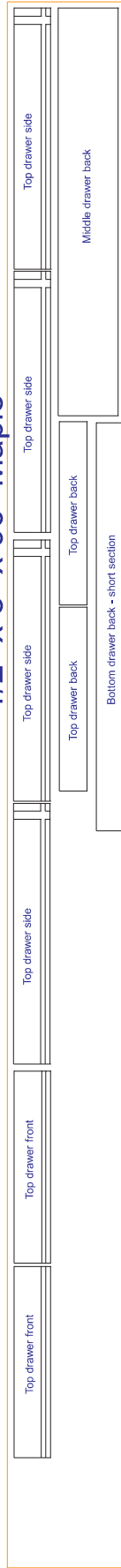
Option Two
(1) Bottom drawer false front - 1/2" Maple



Option One
(2) Bottom drawer false fronts - 1/2" Maple



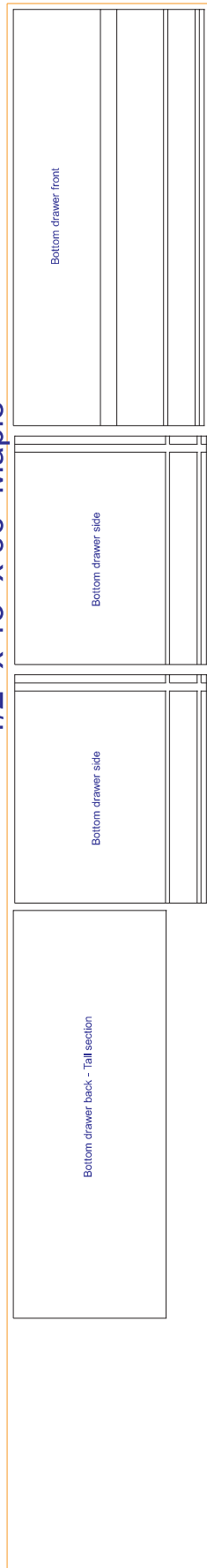
1/2" x 8" x 96" Maple



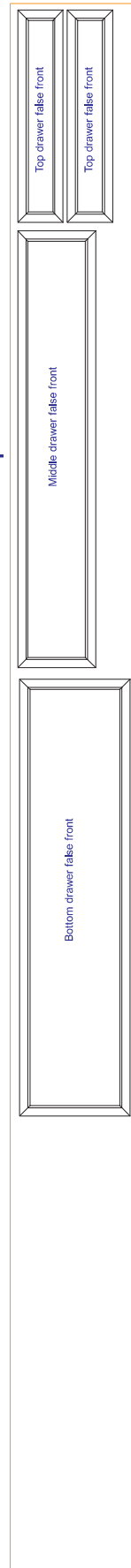
1/2" x 5" x 96" Maple



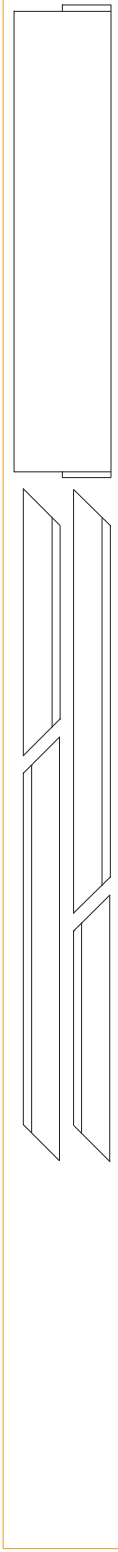
1/2" x 13" x 96" Maple



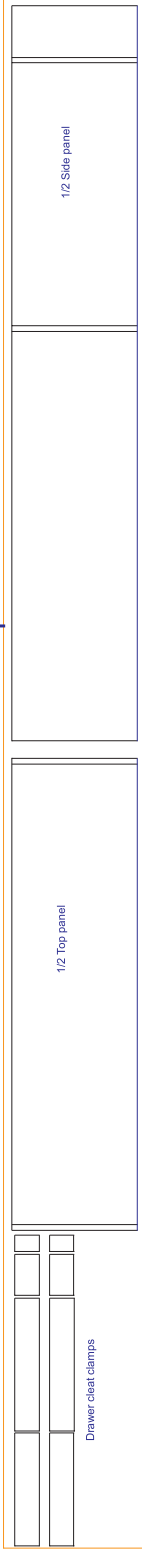
1/2" x 8" x 96" Maple



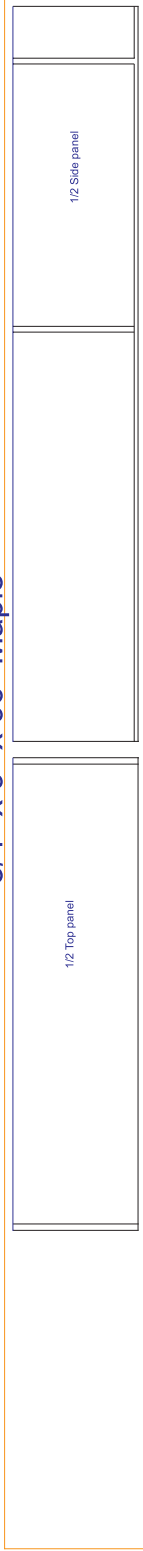
3/4" x 8" x 96" Maple



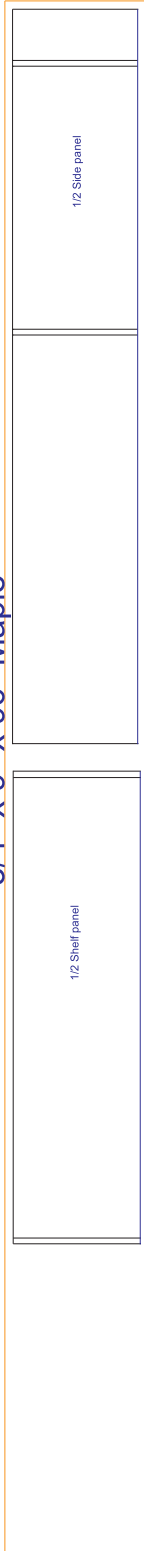
3/4" x 9" x 96" Maple



3/4" x 9" x 96" Maple



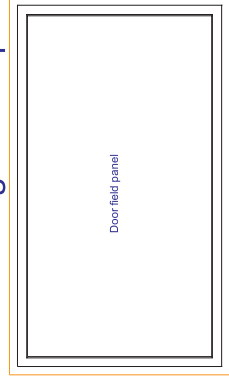
3/4" x 9" x 96" Maple



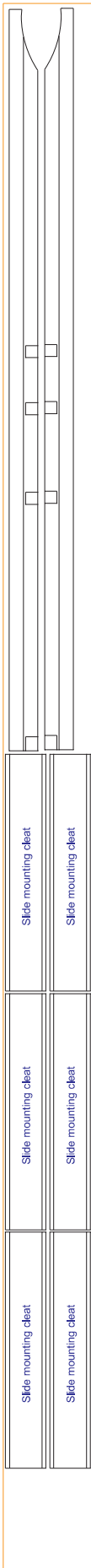
3/4" x 9" x 96" Maple



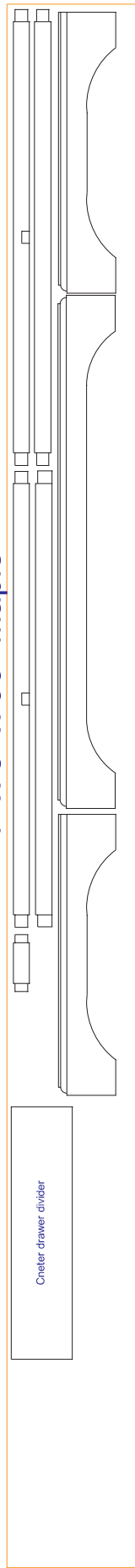
3/4" x 13 1/2" x 24" Figured Maple



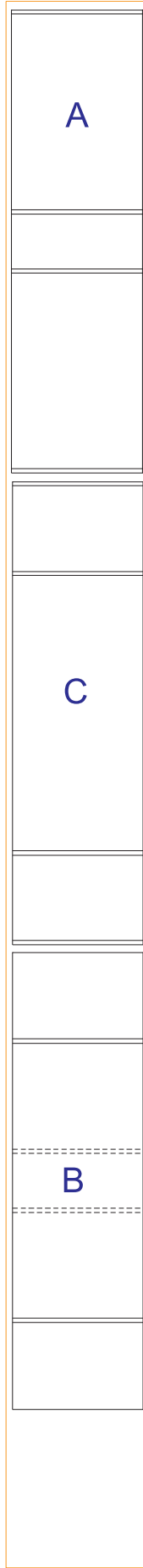
1" x 6" x 96" Maple



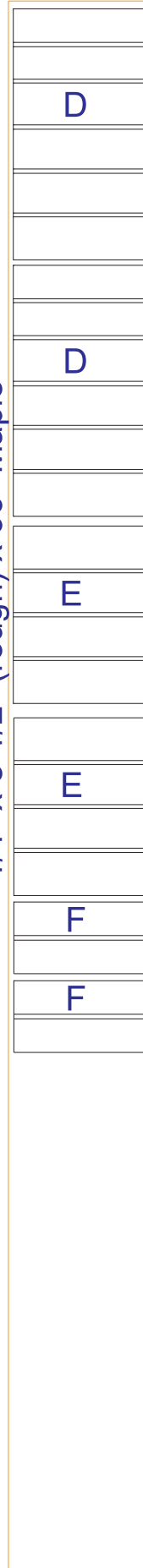
1" x 8" x 96" Maple



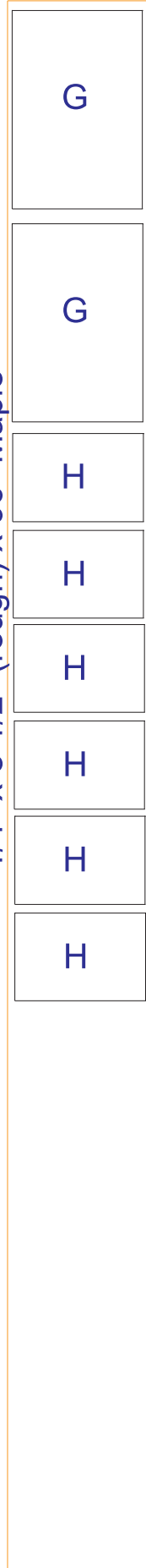
1/4" x 8 1/2" (rough) x 96" Maple



1/4" x 8 1/2" (rough) x 96" Maple



1/4" x 8 1/2" (rough) x 96" Maple



1/4" x 48" x 96" Birch plywood

