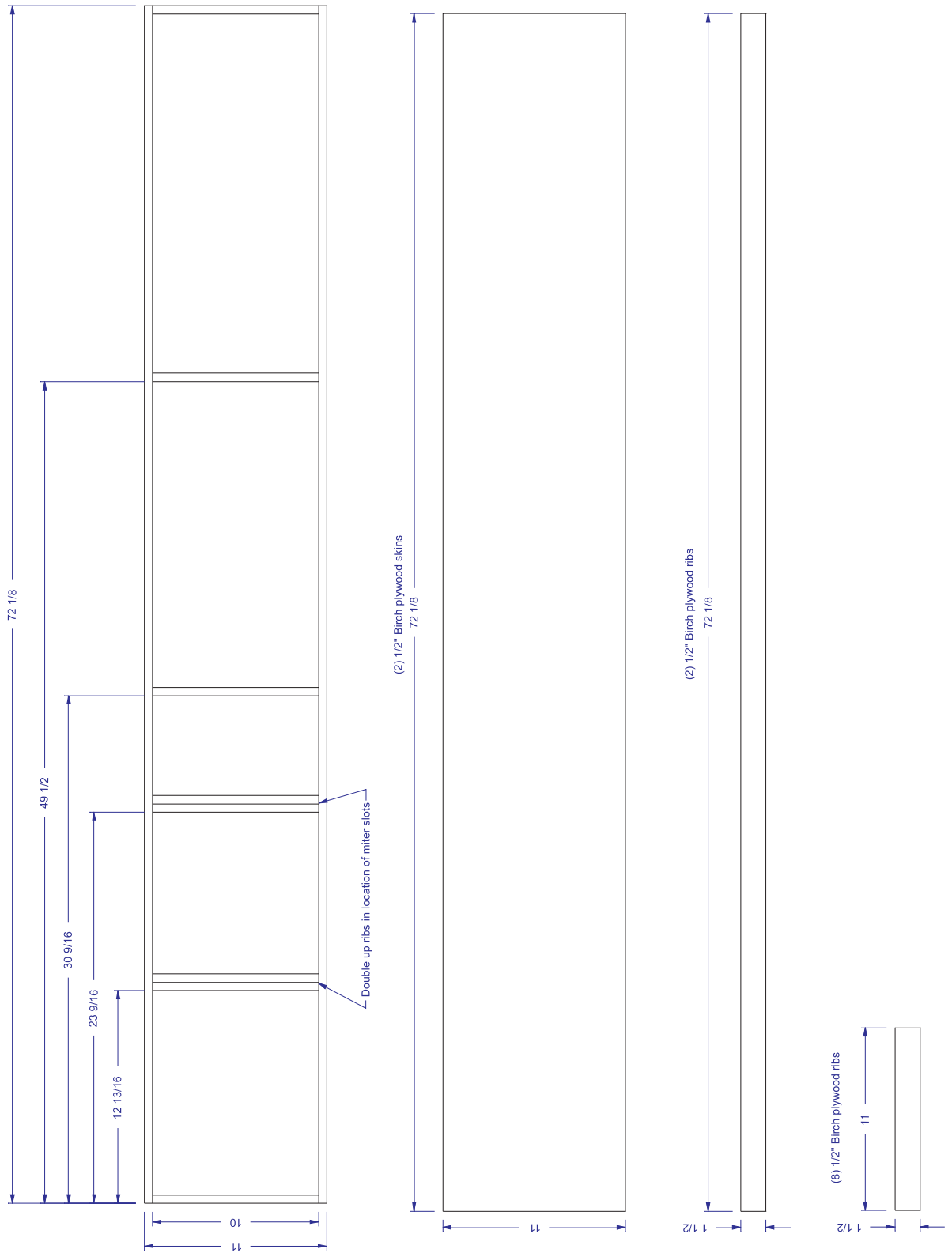
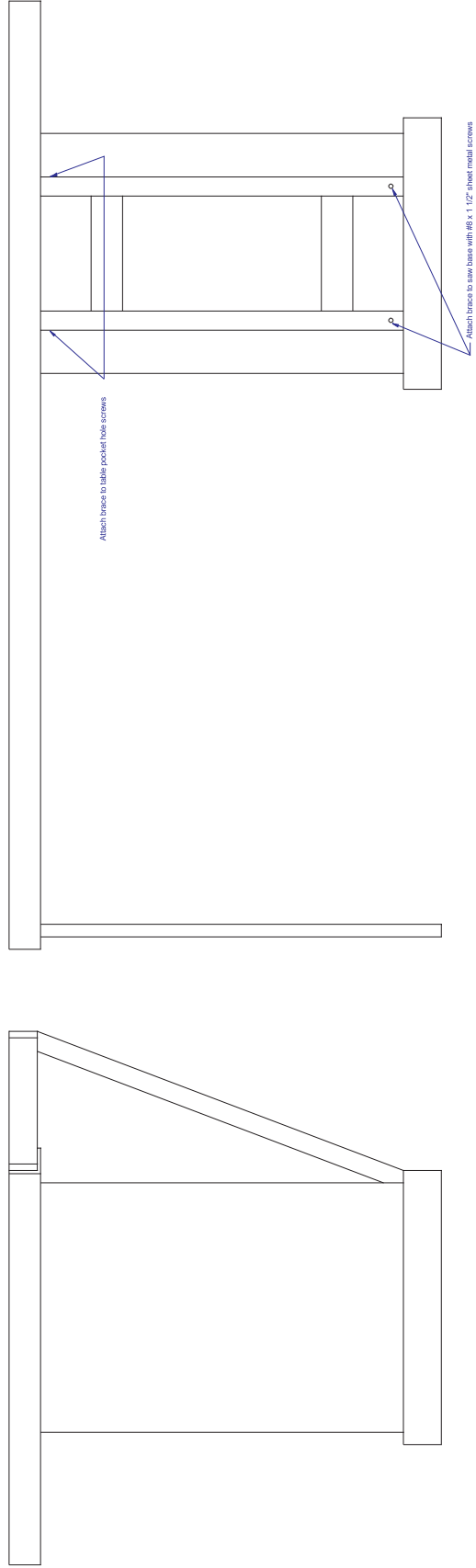


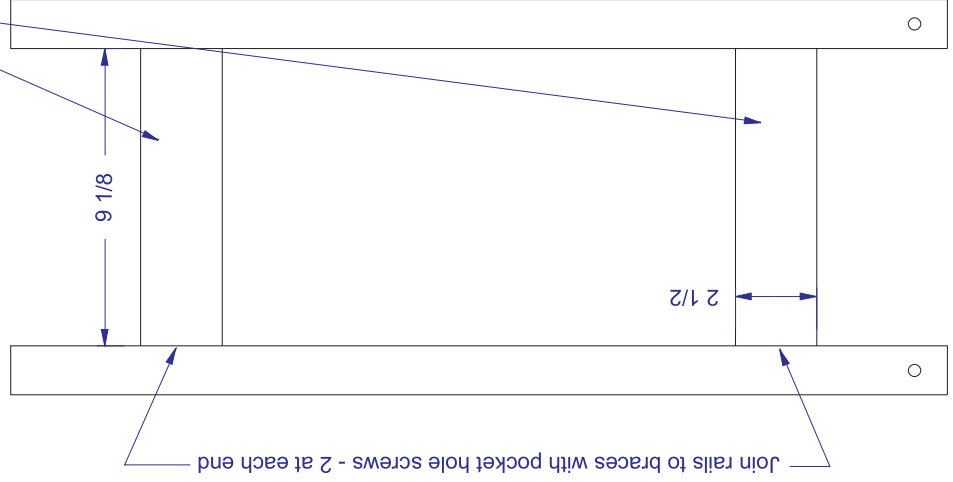
Fixed Table - 1/2" Birch Plywood



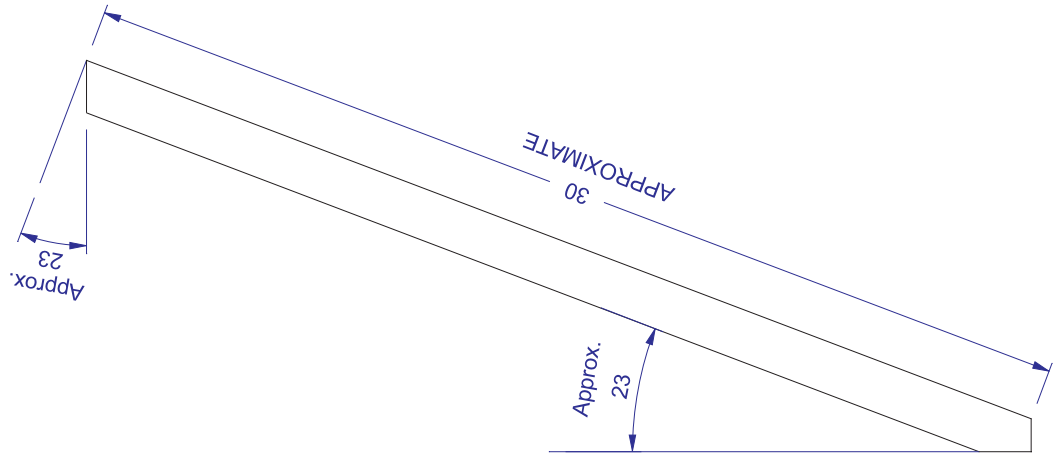
Back view (shown 1/2 scale)



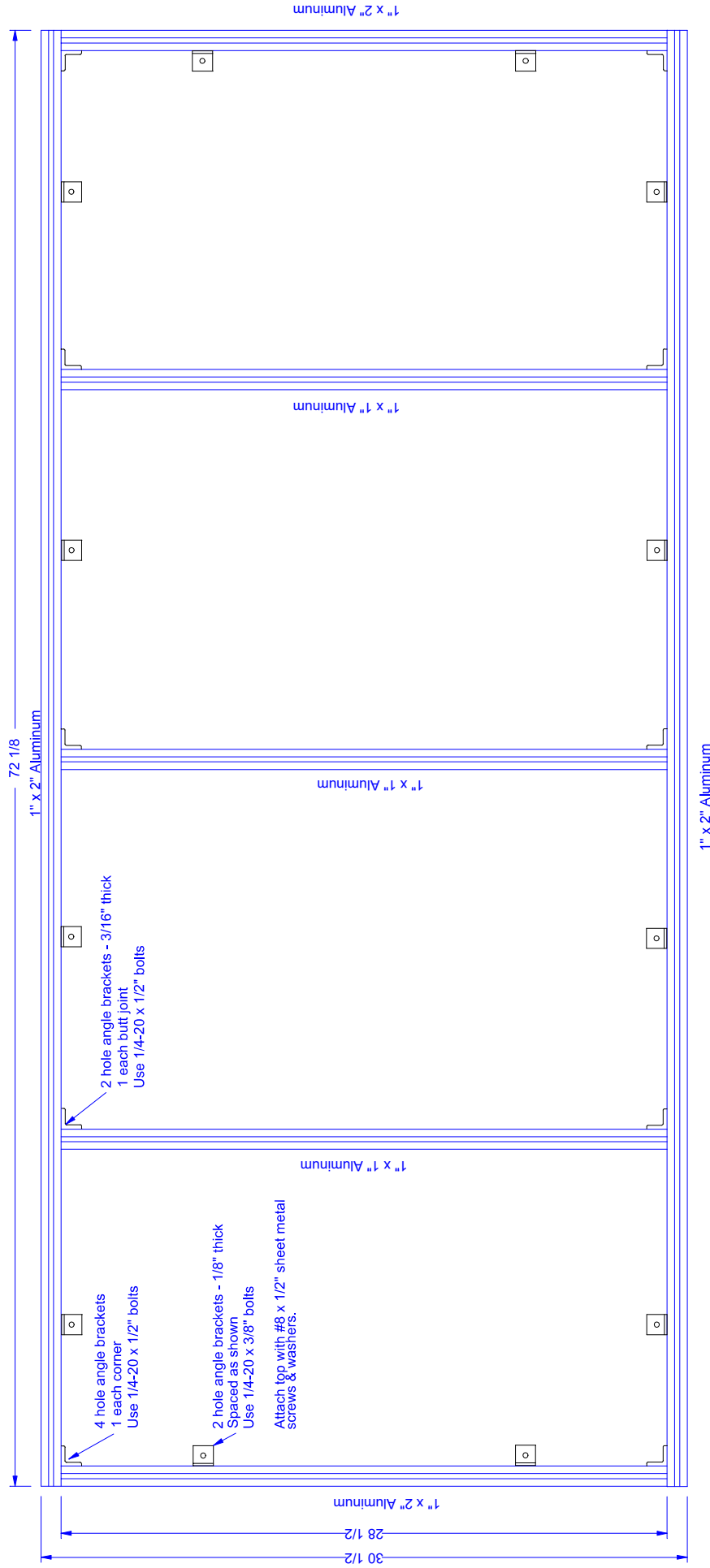
(2) Rails - 3/4" x 2 1/2" Oak

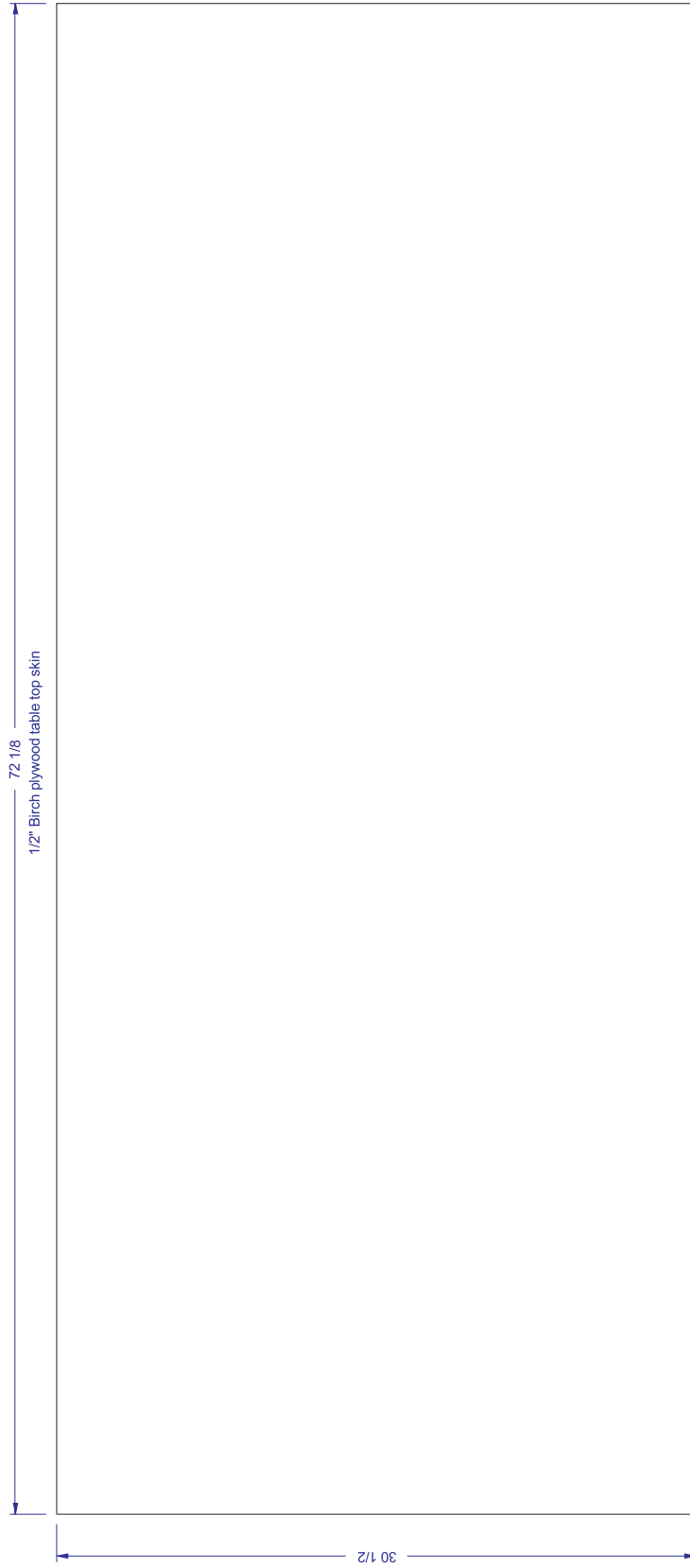


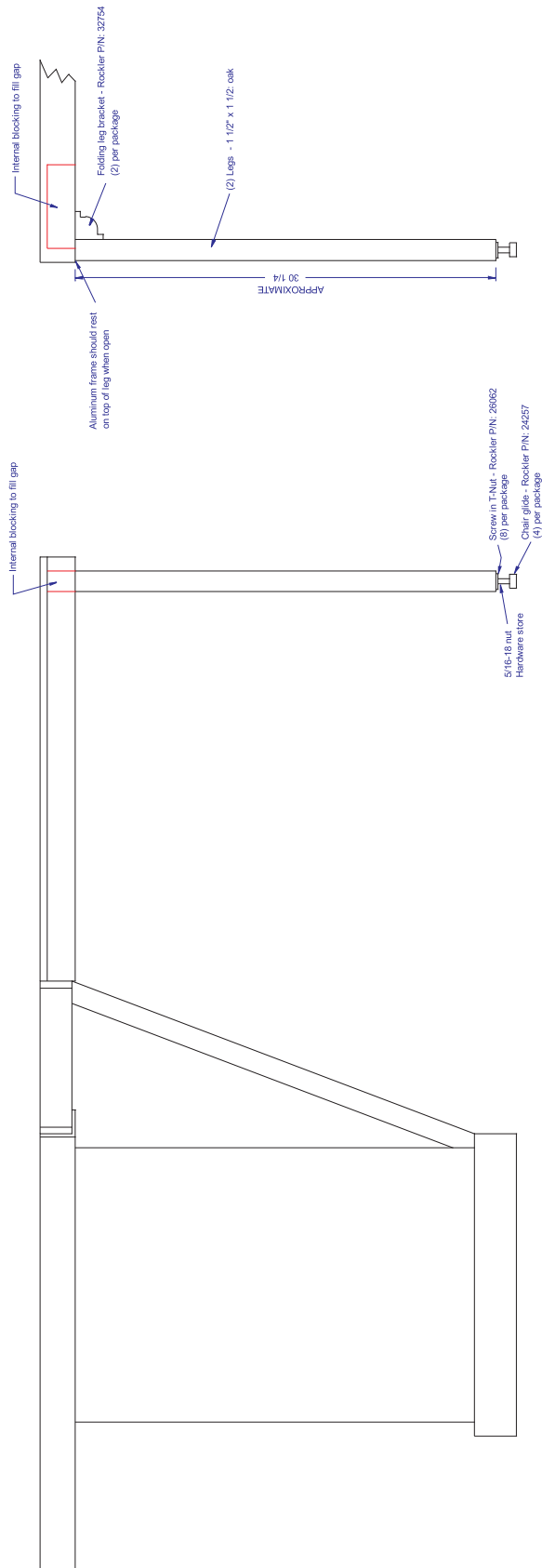
(2) Vertical braces - 1 1/2" x 1 1/2" Oak



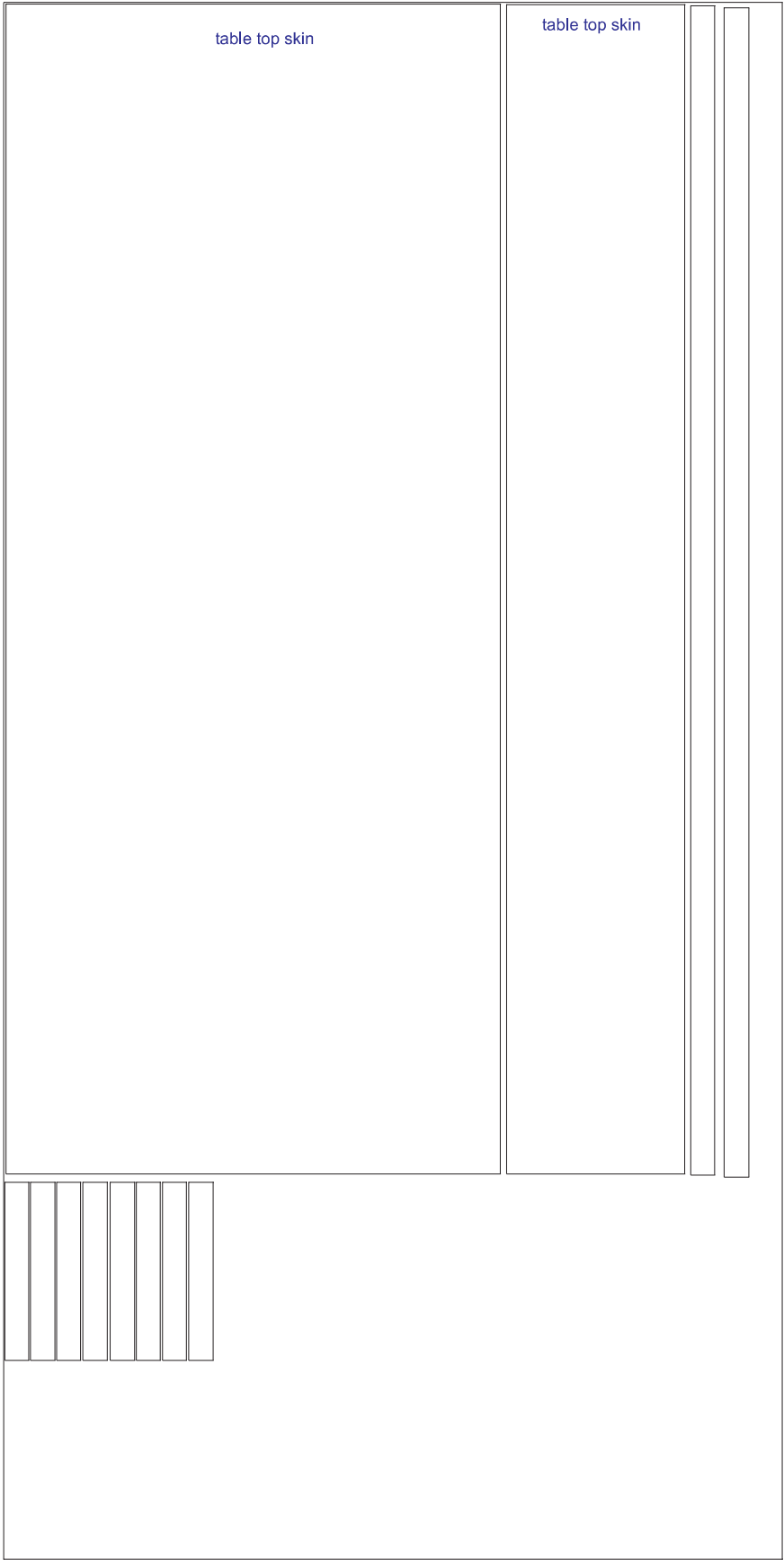
Aluminum Frame Kit - Order from Woodworking at Home Magazine
 Kit includes all aluminum extrusions, brackets, nuts, & bolts.
 Call, email, or check our website for pricing and delivery.



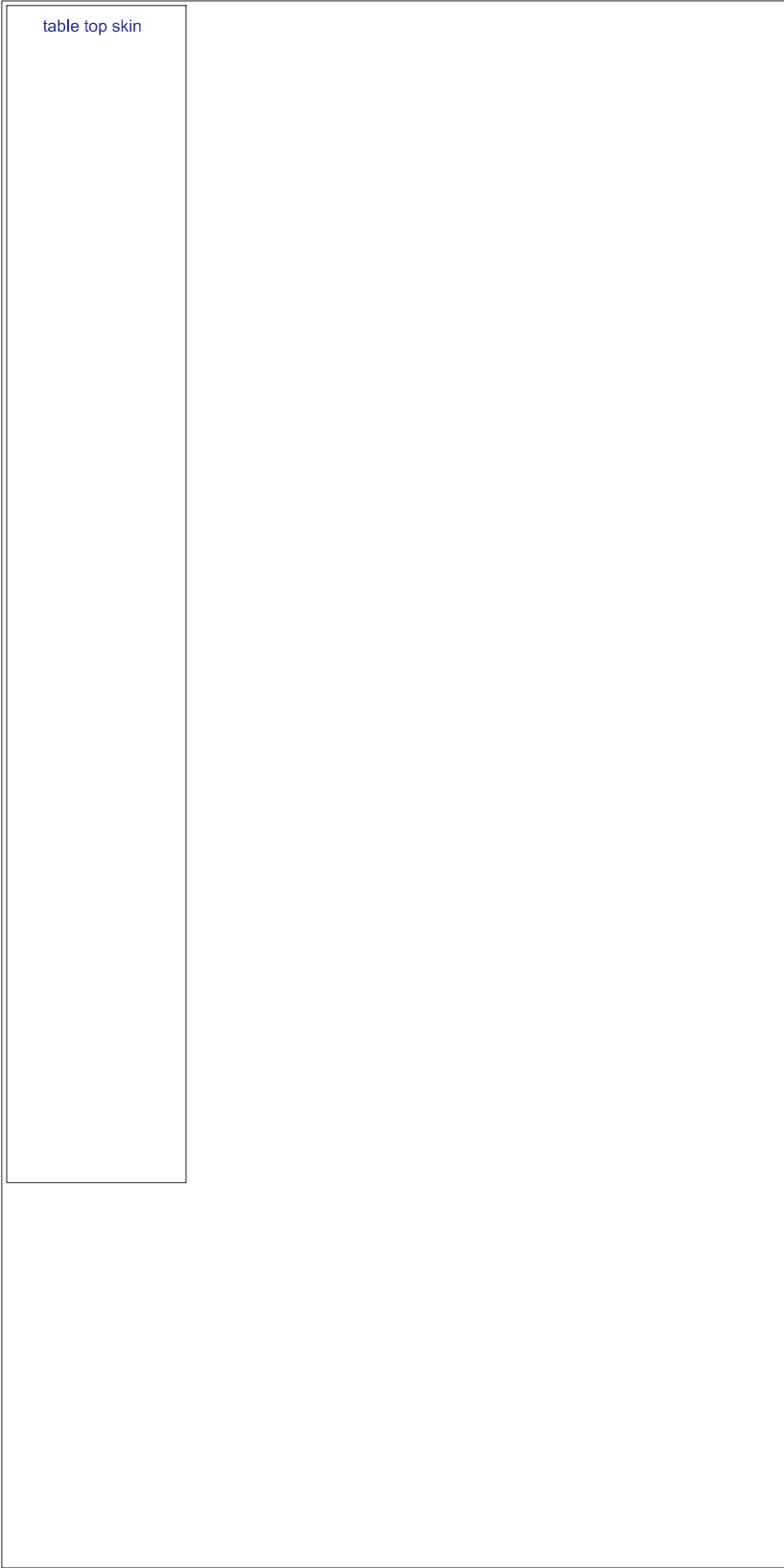




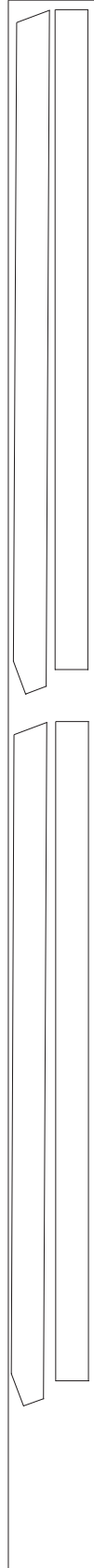
1/2" x 48" x 96" Birch Plywood



1/2" x 48" x 96" Birch Plywood



1 1/2" x 4" x 72" Oak



3/4" x 3" x 24" Oak

