

Purchase Items:

(2) Pair 16" Full Extension Slides - Custom Service Hardware (or other woodworking suppliers)

(4) 1/4-20 x 2" Carriage bolts, (4) ¼ Fender Washers, (4) 1/4-20 Nuts

(2) 1/4-20 Threaded inserts (McMaster or hardware store)

(2) ¼" Washers

(2) 1/4-20 x 1 1/4" bolts

(2) Shower door rollers - 1" diameter W / 1/4" hole (Hardware store or home center)

(6) Feet, 1/16" dia. Wire rope - black vinyl coated (Hardware store or home center)

(1) Wire rope ferrule (if using vinyl coated wire rope, you may want to get two sizes to see which fits better - 1/16" and 1/8") (Hardware store or home center)

(2) Mission style door pulls - Rockler P/N: 10308

(2) Magnetic Door Catches - Woodcraft P/N: 27H45

(2) 3/8 x 44" aluminum rods - side braces - Length is approximate and you will have to purchase standard lengths from the hardware store or home center.

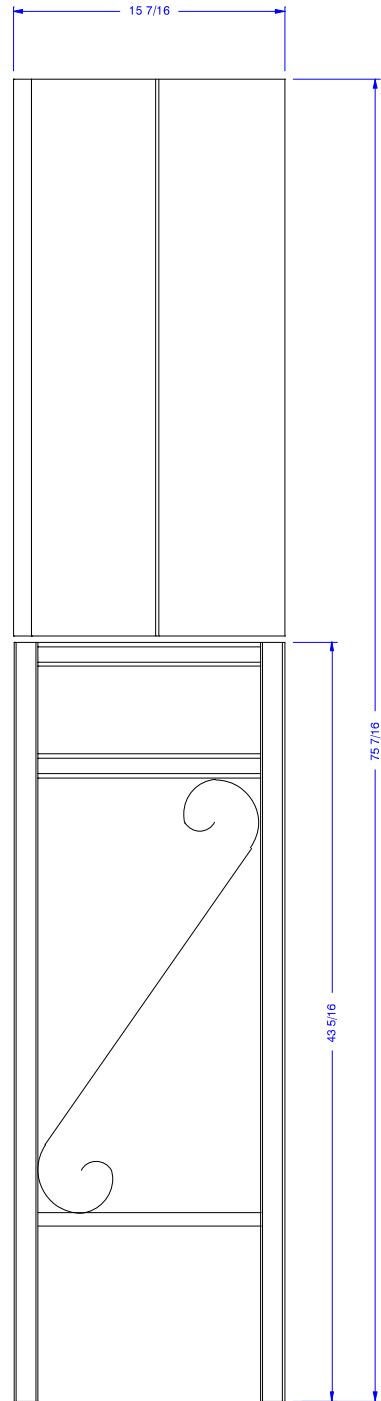
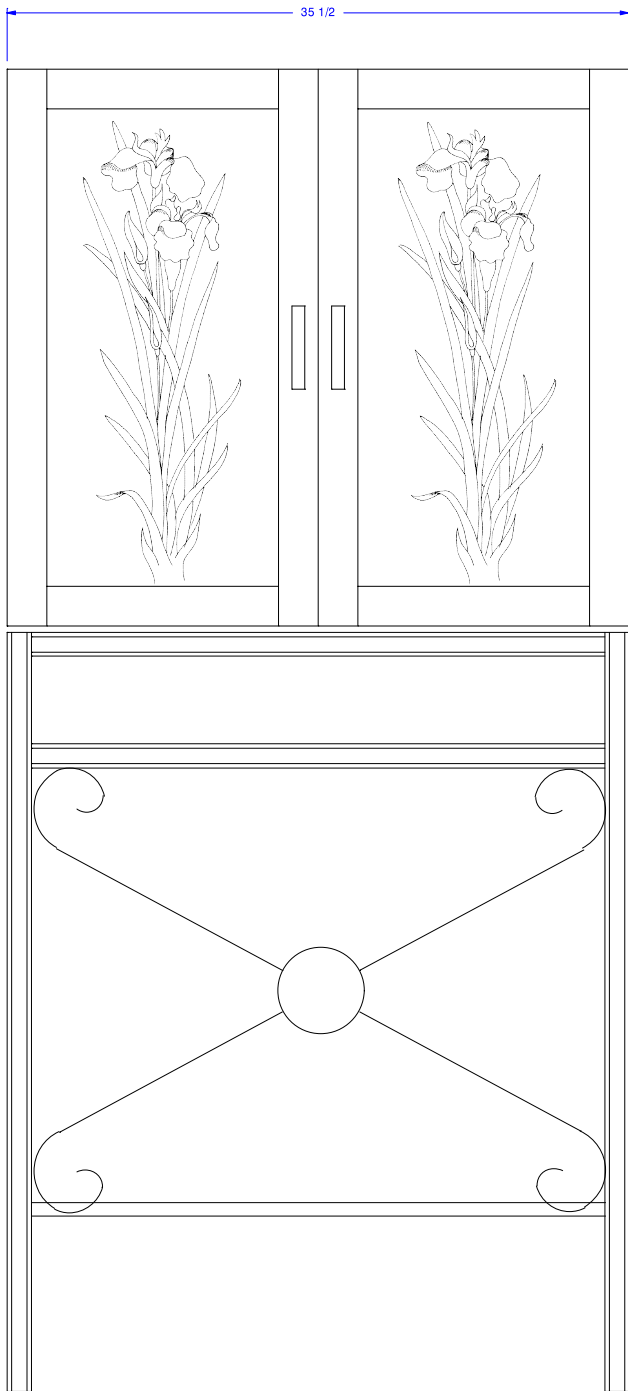
(4) 3/8 x 40" aluminum rods - back braces - Length is approximate and you will have to purchase standard lengths from the hardware store or home center.

(1) Section of 1/8" x ¾" aluminum about 1 foot long - cable clamps - Length is approximate and you will have to purchase standard lengths from the hardware store or home center.

(2) 10-32 x ½" long machine screws & nuts - Cable clamp - hardware store or home center.



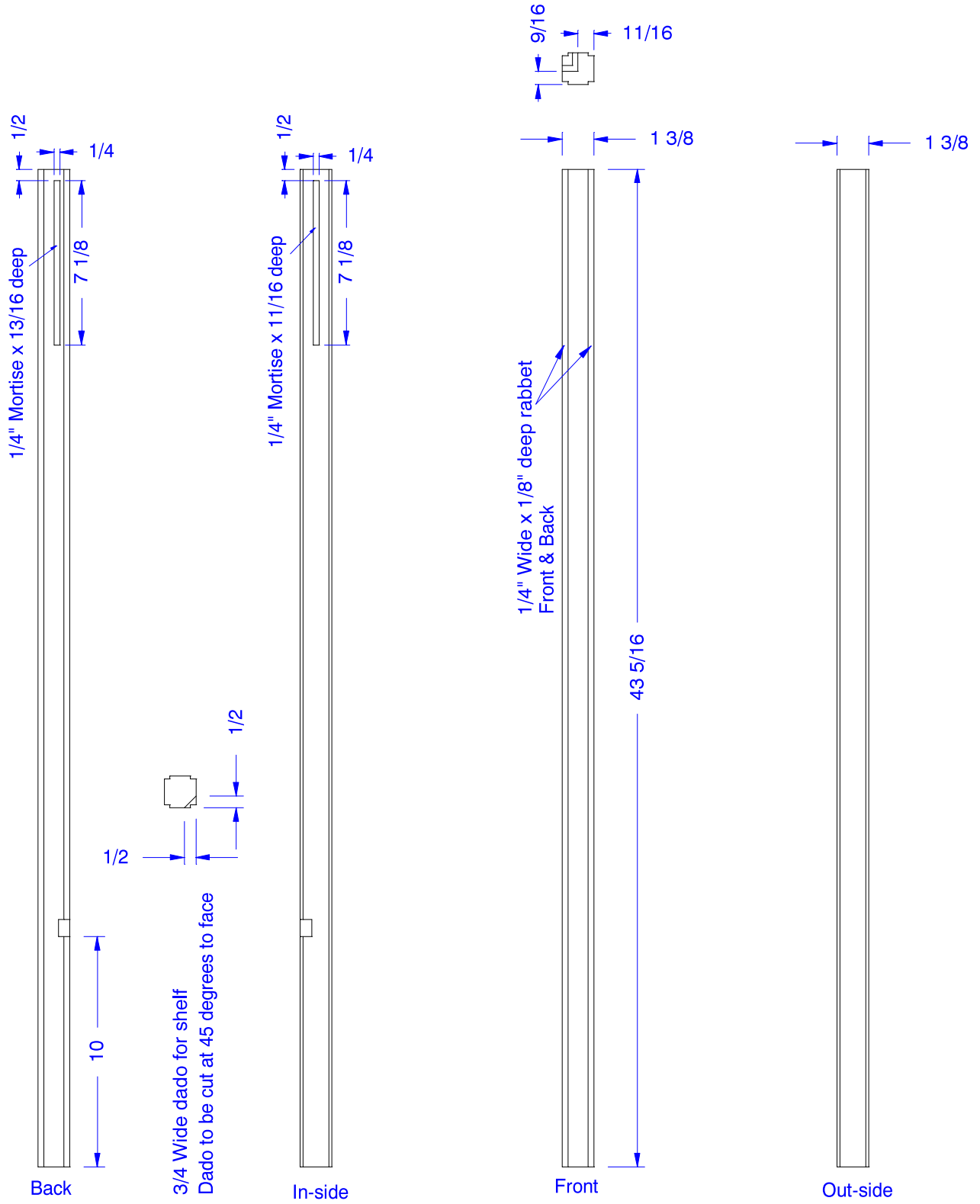
Media Storage Chest
Chest-On-Frame



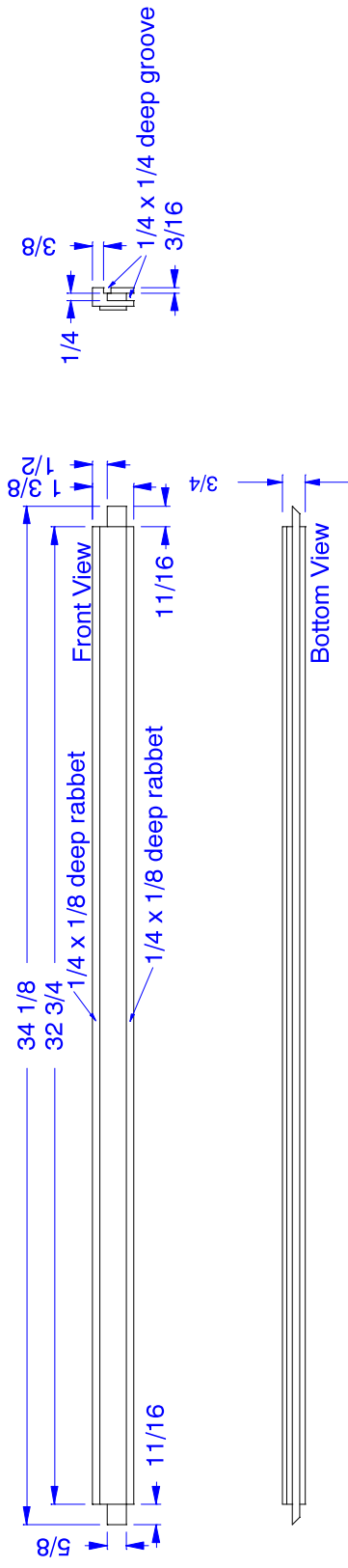
Note - Due to the top-heavy nature of chest on frame construction, you will need to attached the chest to a wall for added stability.

(4) Legs

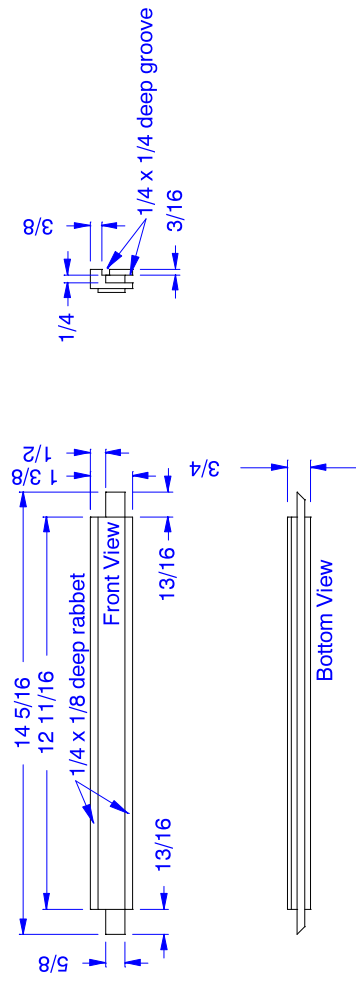
Right Front Shown



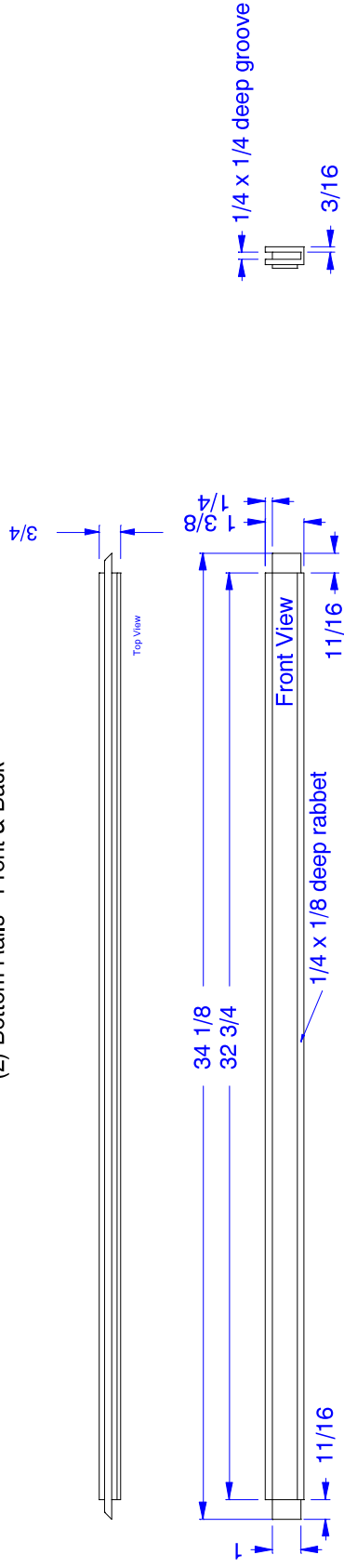
(2) Top Rails - Front & Back



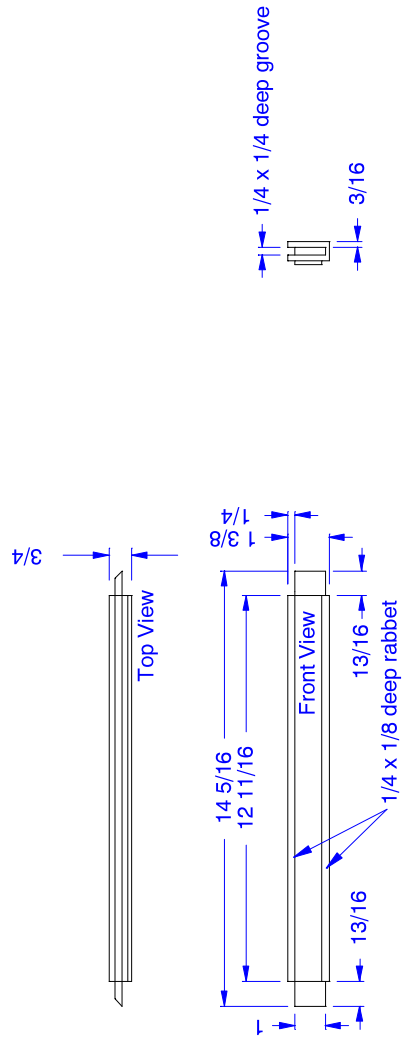
(2) Top Side Rails



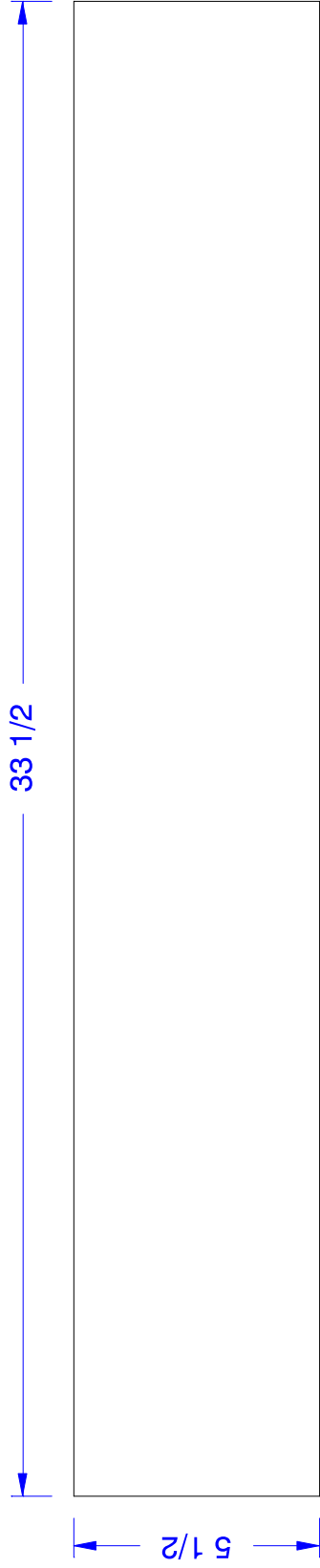
(2) Bottom Rails - Front & Back



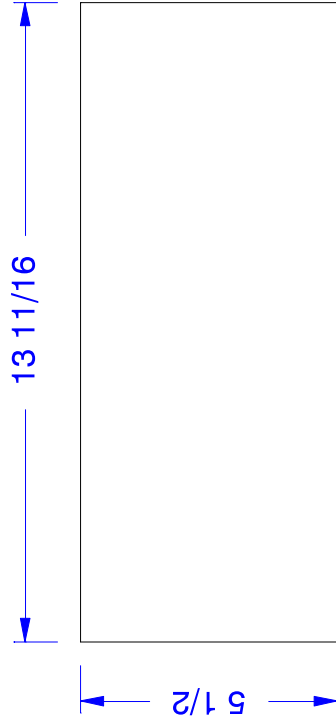
(2) Bottom Side Rails



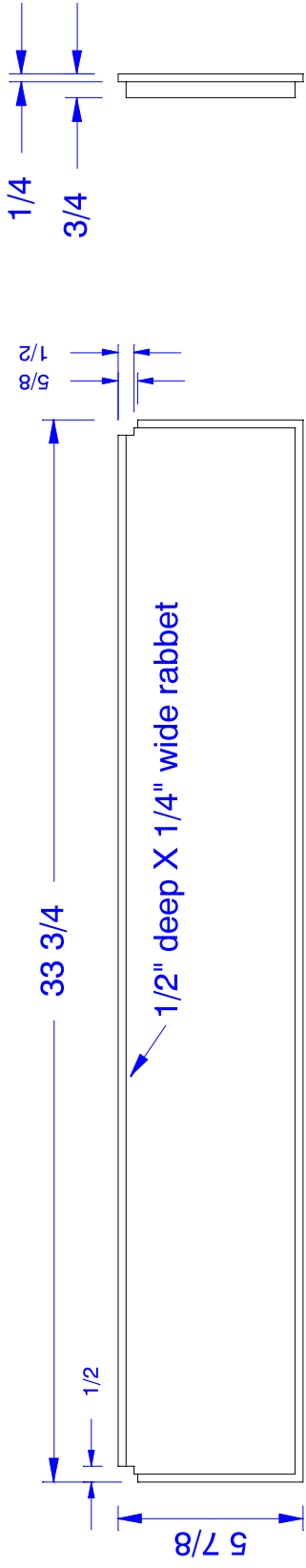
(2) Rail Field Panels - Front & Back - 1/4" Walnut Plywood



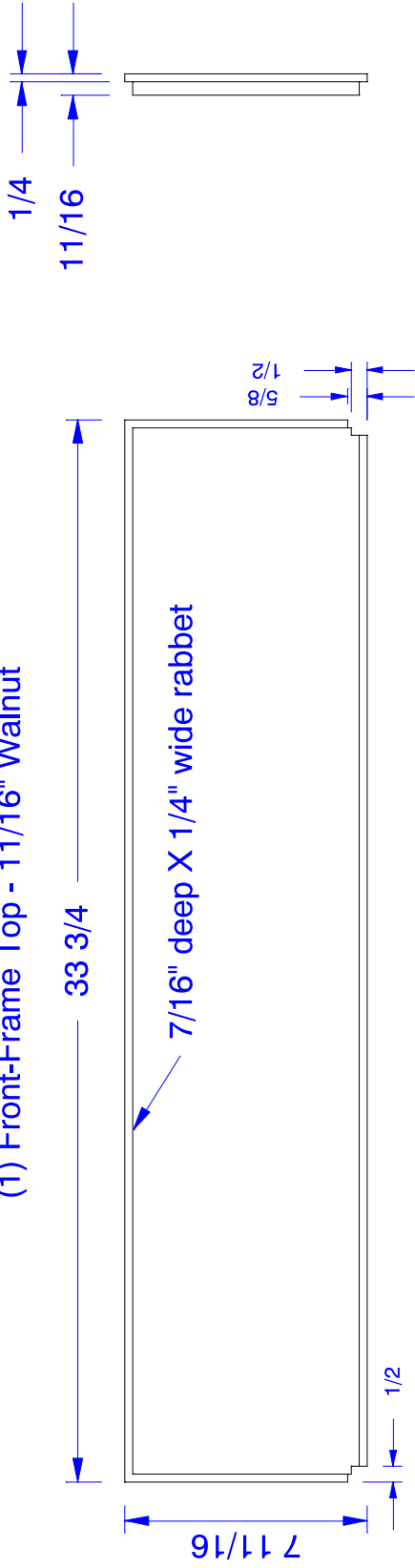
(2) Rail Field Panels - Front & Back - 1/4" Walnut Plywood



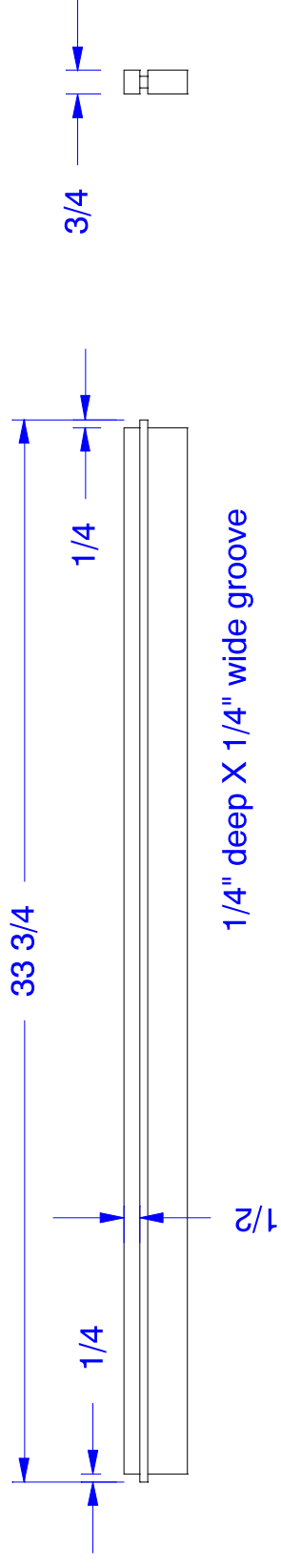
(1) Back-Frame Top - 3/4" Walnut



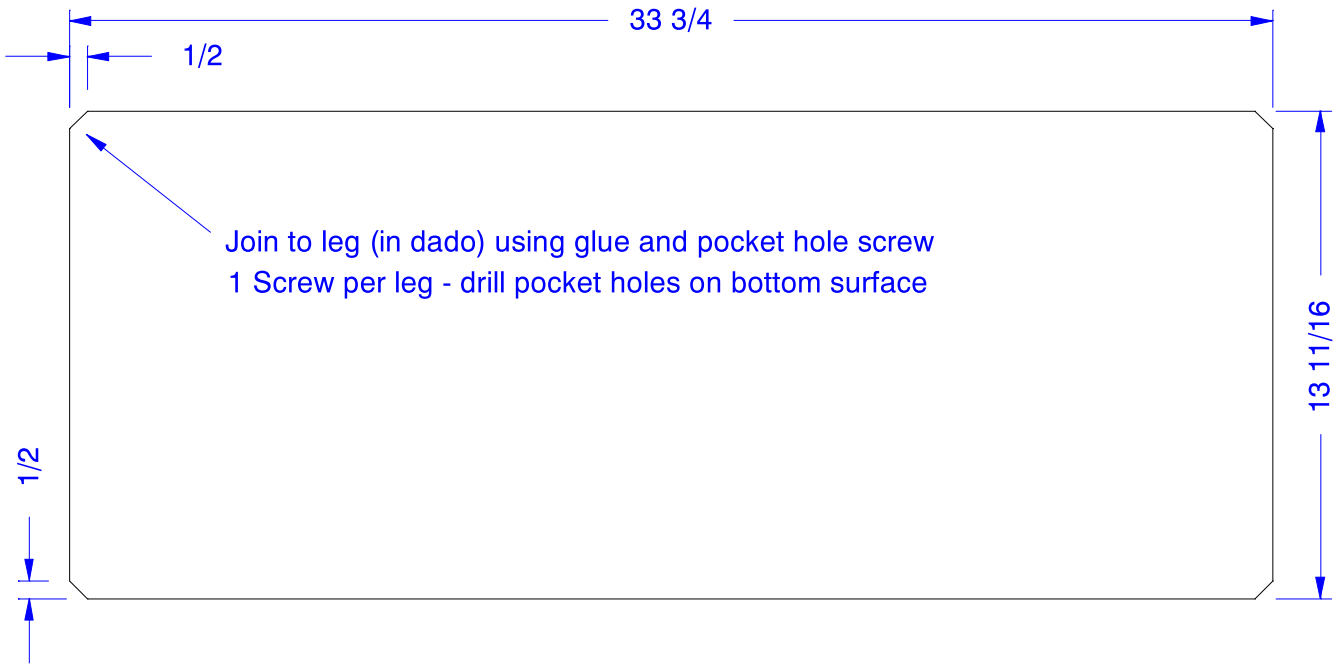
(1) Front-Frame Top - 11/16" Walnut

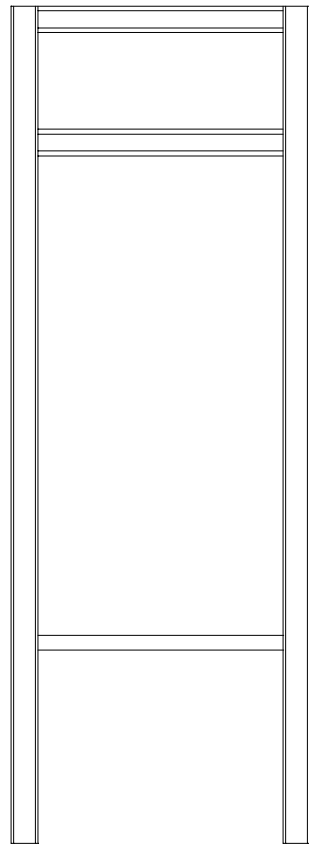
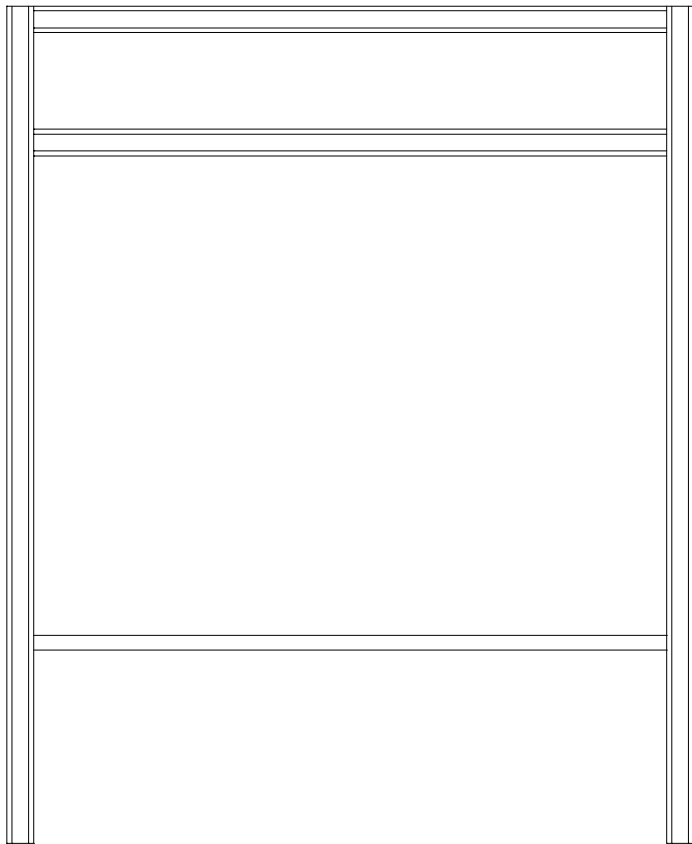
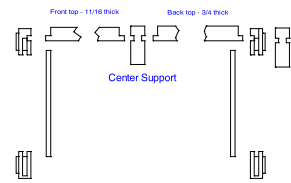
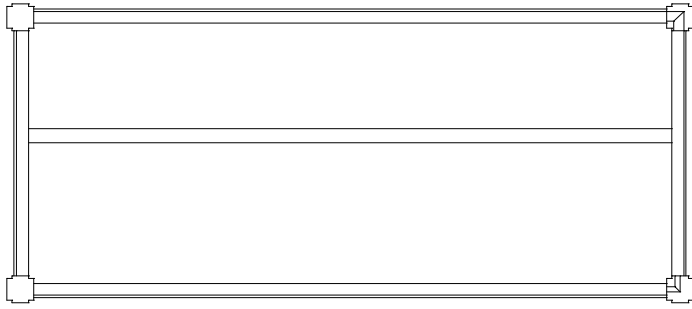


(1) Frame Center Support - 3/4" Walnut



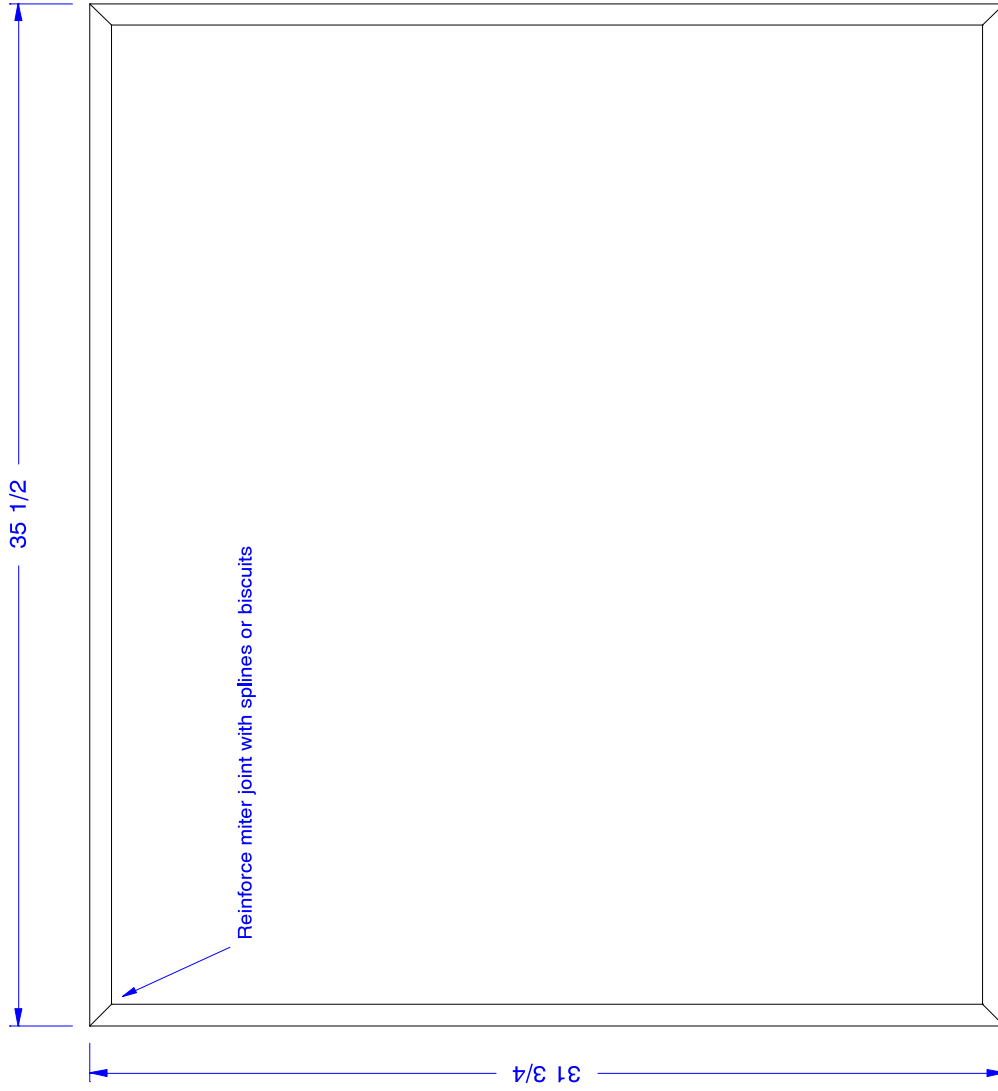
(1) Bottom Shelf - 5/8" Walnut



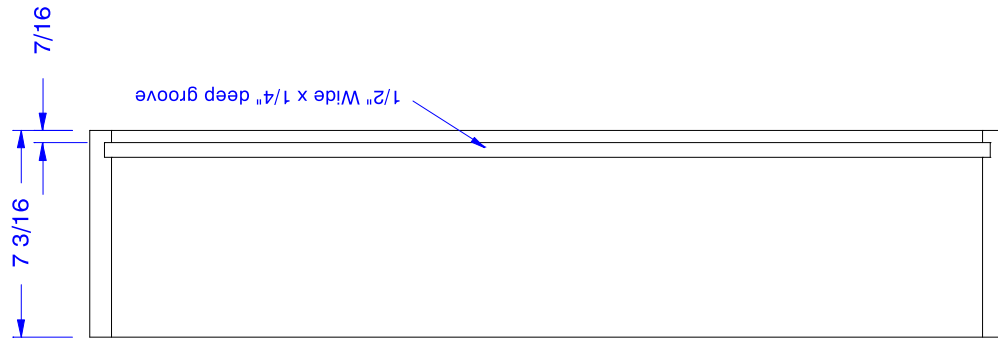


(1) Back Box - 3/4" Walnut

Overall View Of Box



Inside Face Of Sides

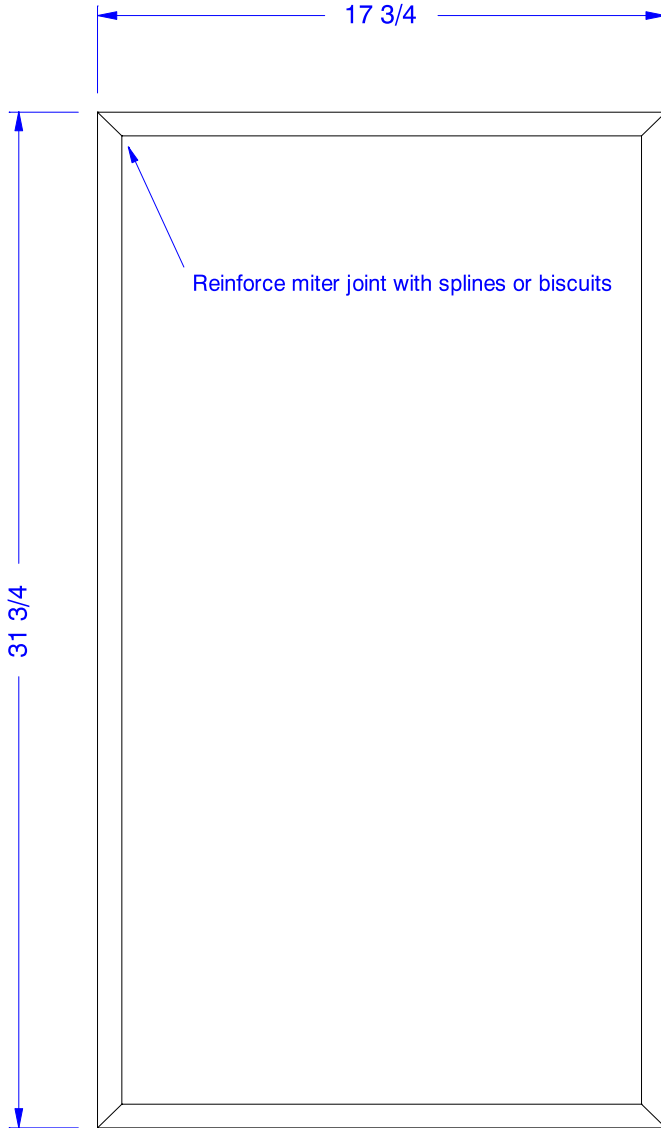


(1) Back Panel - 1/2" Birch plywood

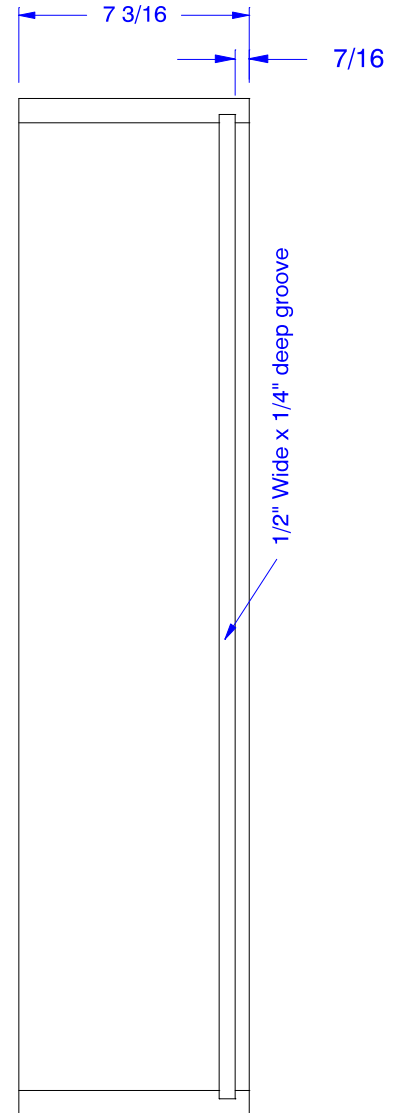


(2) Front Boxes - 3/4" Walnut

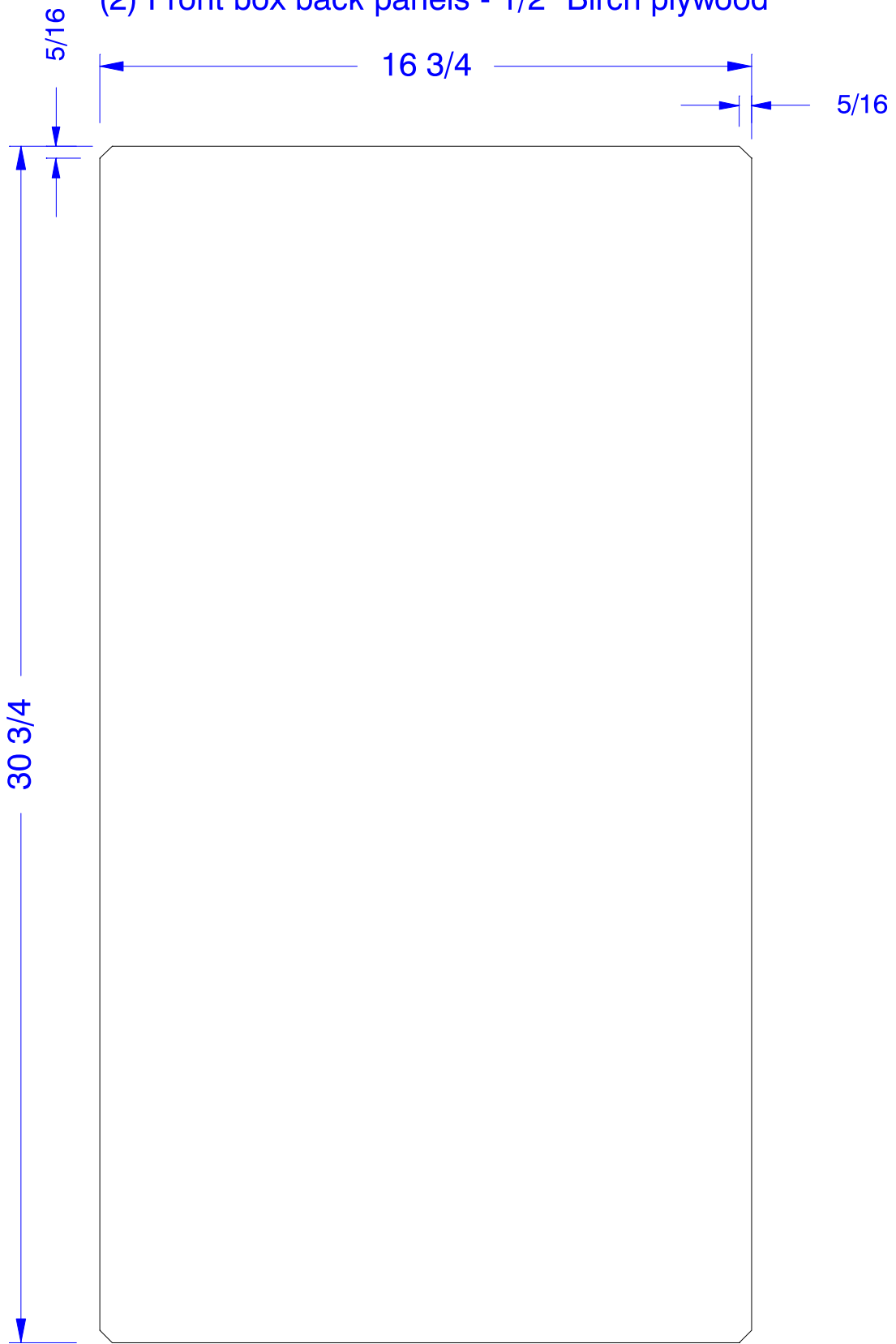
Overall View Of Box



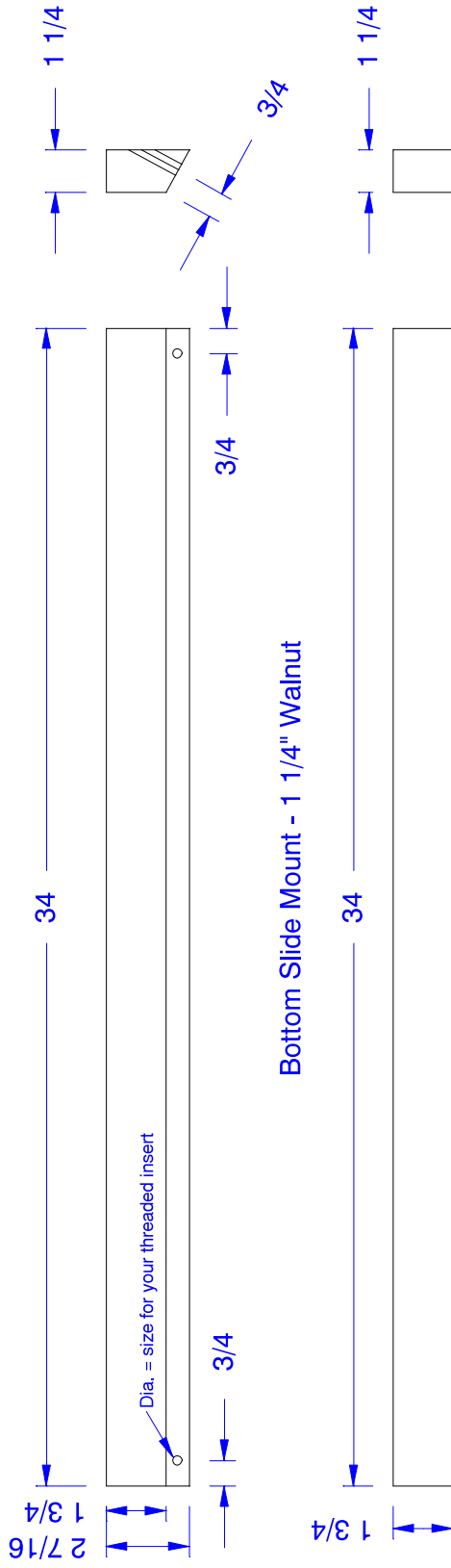
Inside Face Of Sides



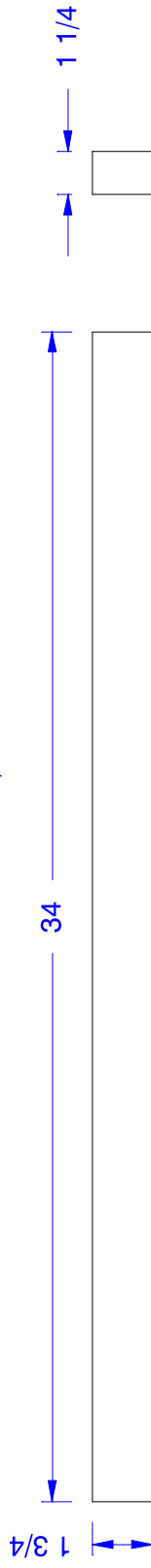
(2) Front box back panels - 1/2" Birch plywood



Top Slide / Cable Mount - 1 1/4" Walnut

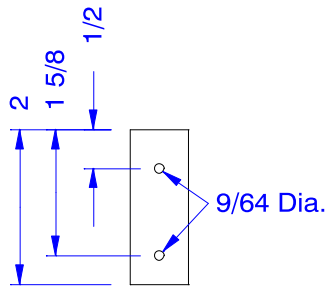


Bottom Slide Mount - 1 1/4" Walnut

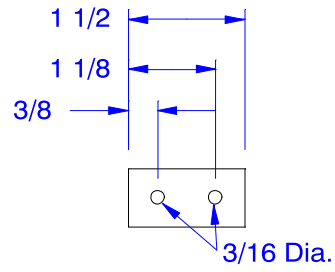


Make Clamps From 1/8" x 3/4" Aluminum

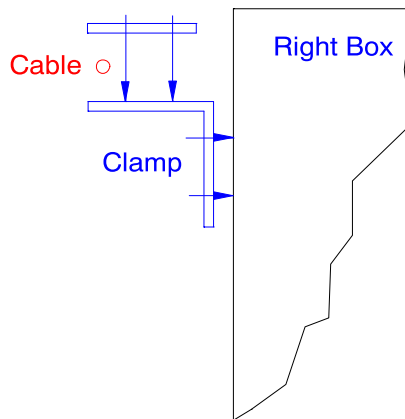
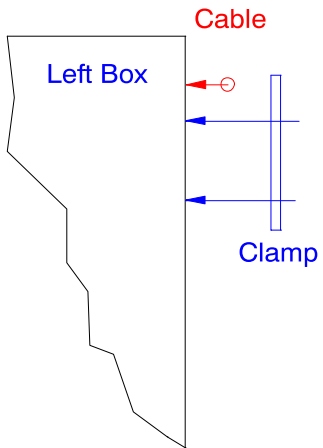
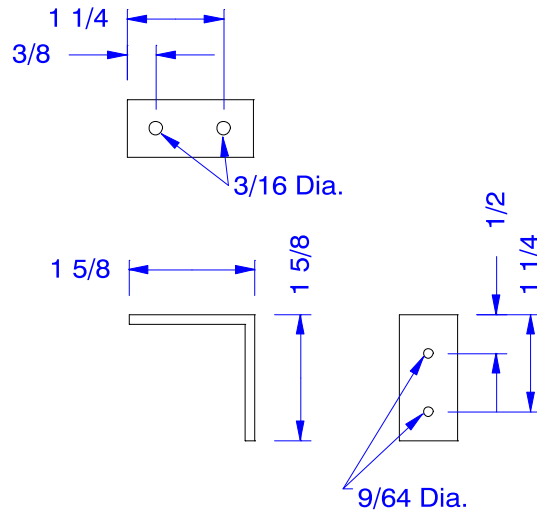
Left Side Clamp

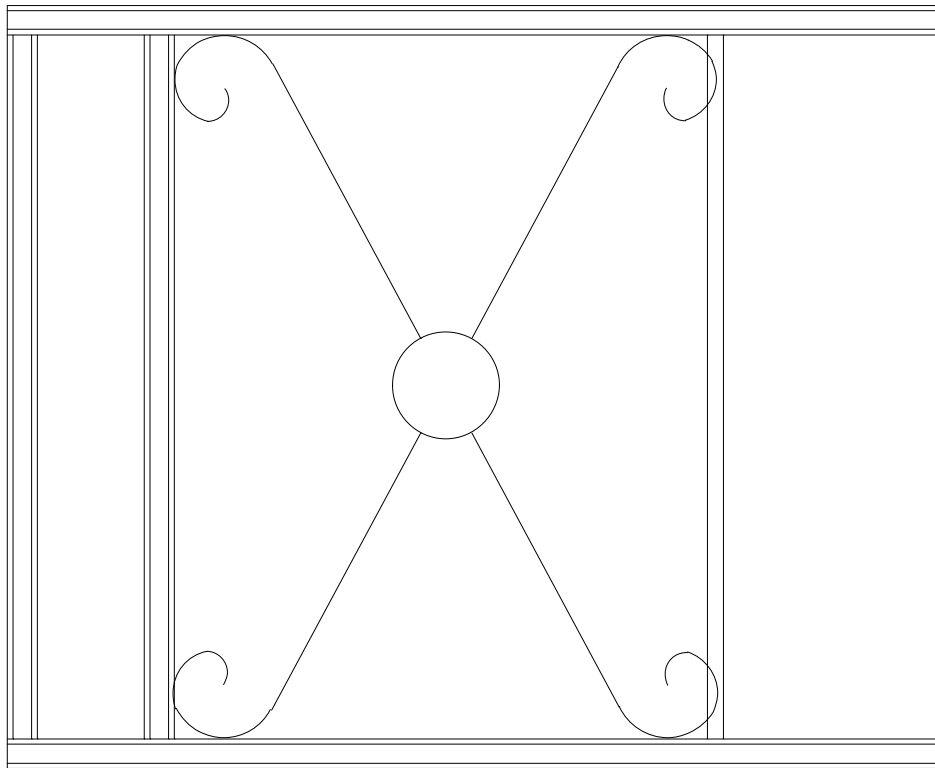
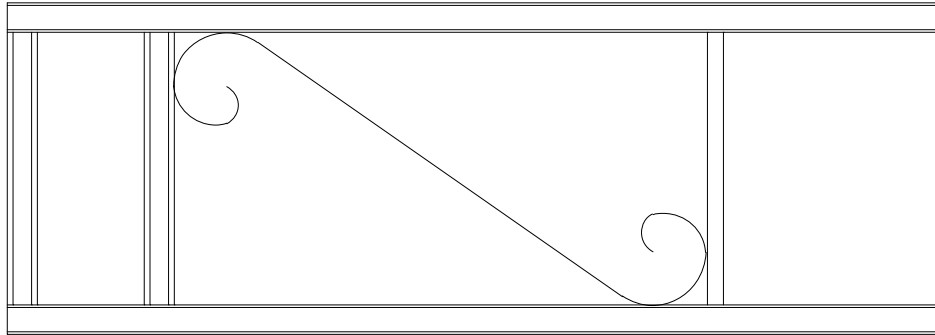


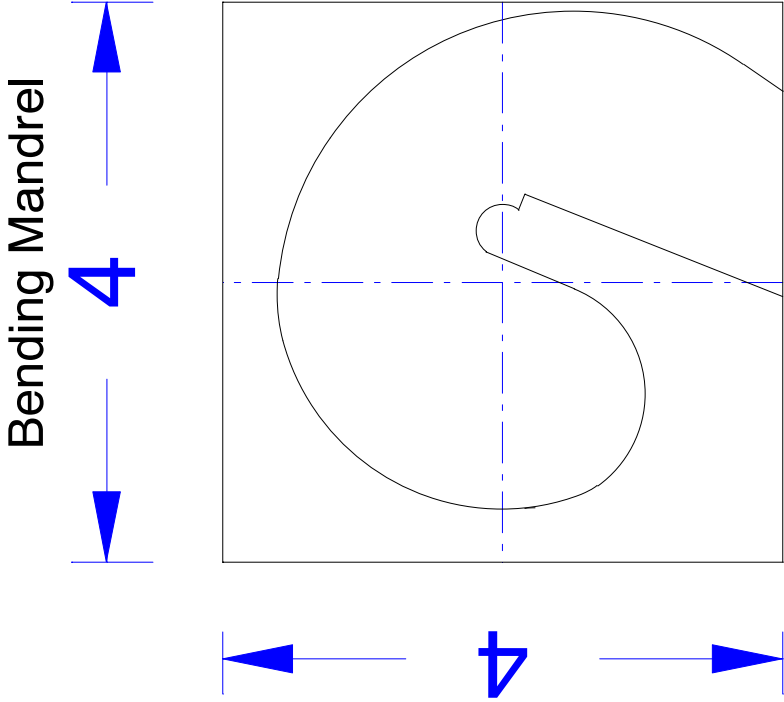
Right Side Clamp



Right Side Clamp Mount



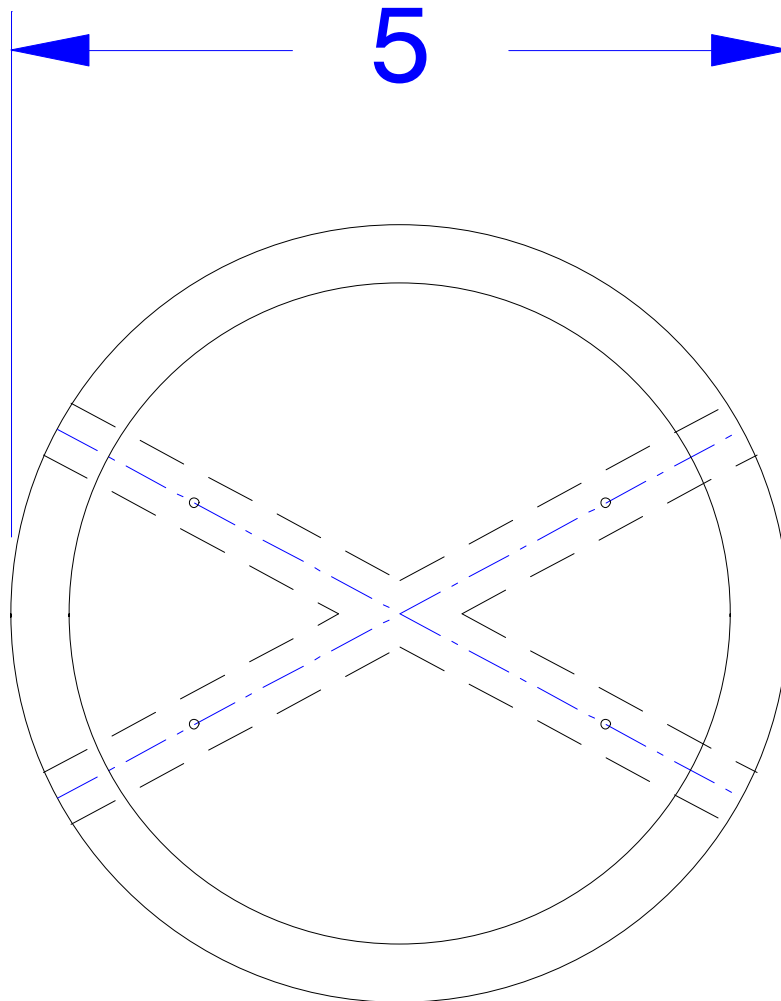




Use with 3/8" diameter round aluminum stock
 The side braces (2) need to be cut to 44" long before bending.
 (make from 1 piece 96" long)

The back braces (4) need to be cut to 40" long before bending.
 (make from 2 pieces 96" long)

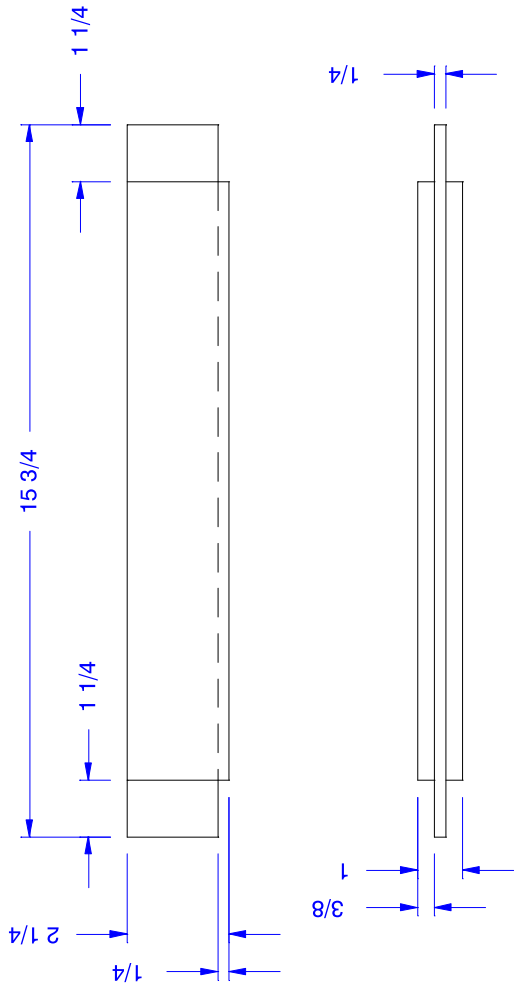
1) Spider - 1" Walnut



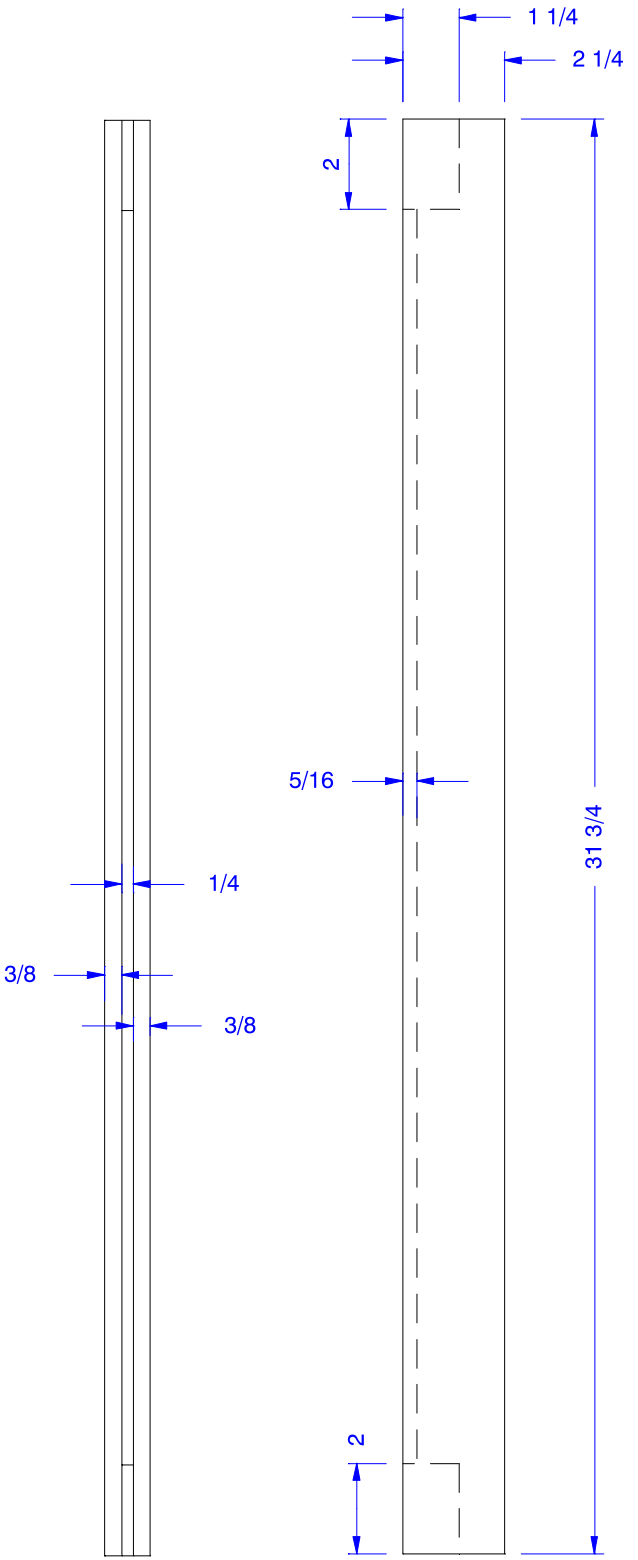
(2) Door Field Panels - 1/4" Walnut

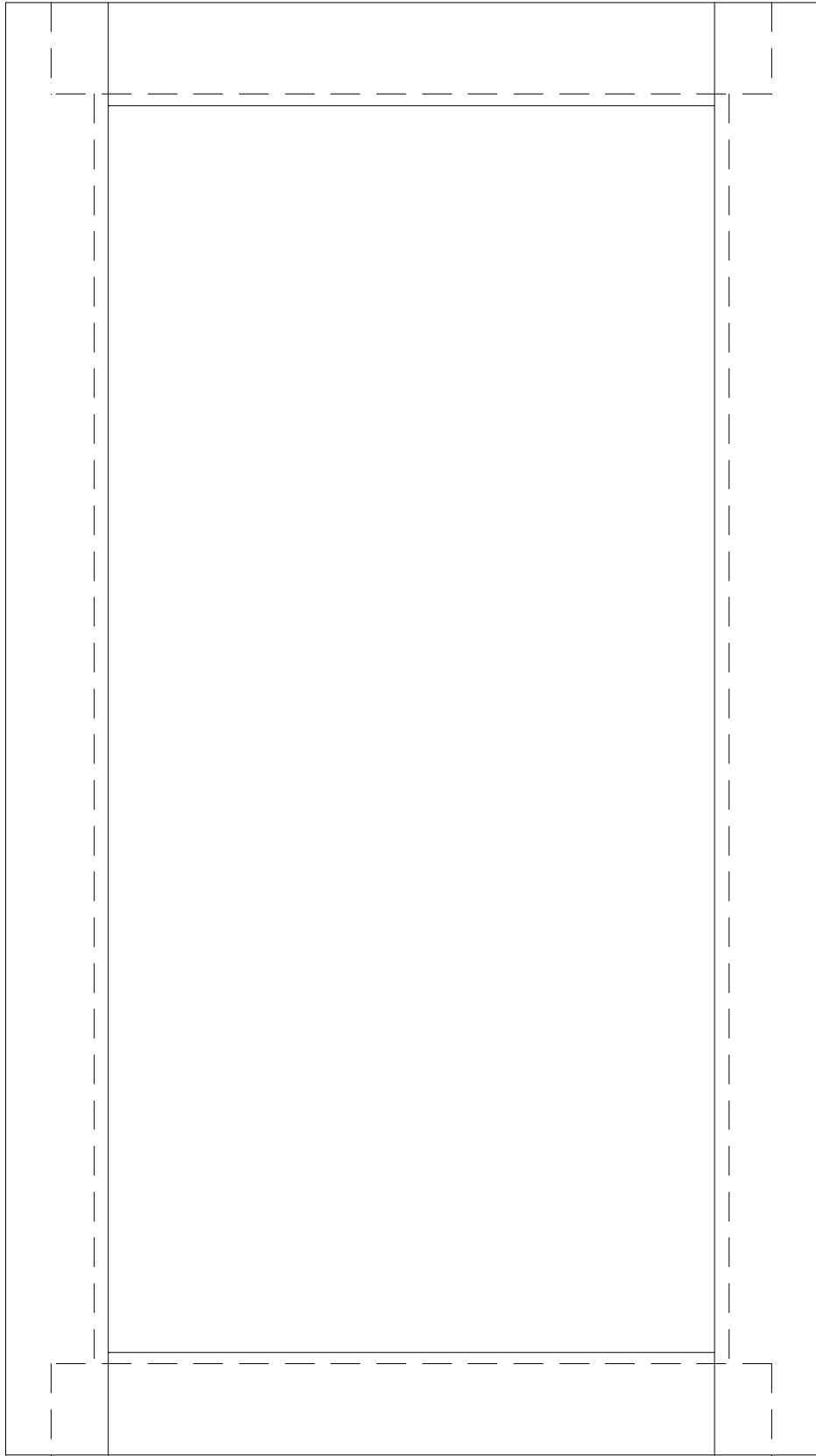


(4) Door Rails - 1" Walnut



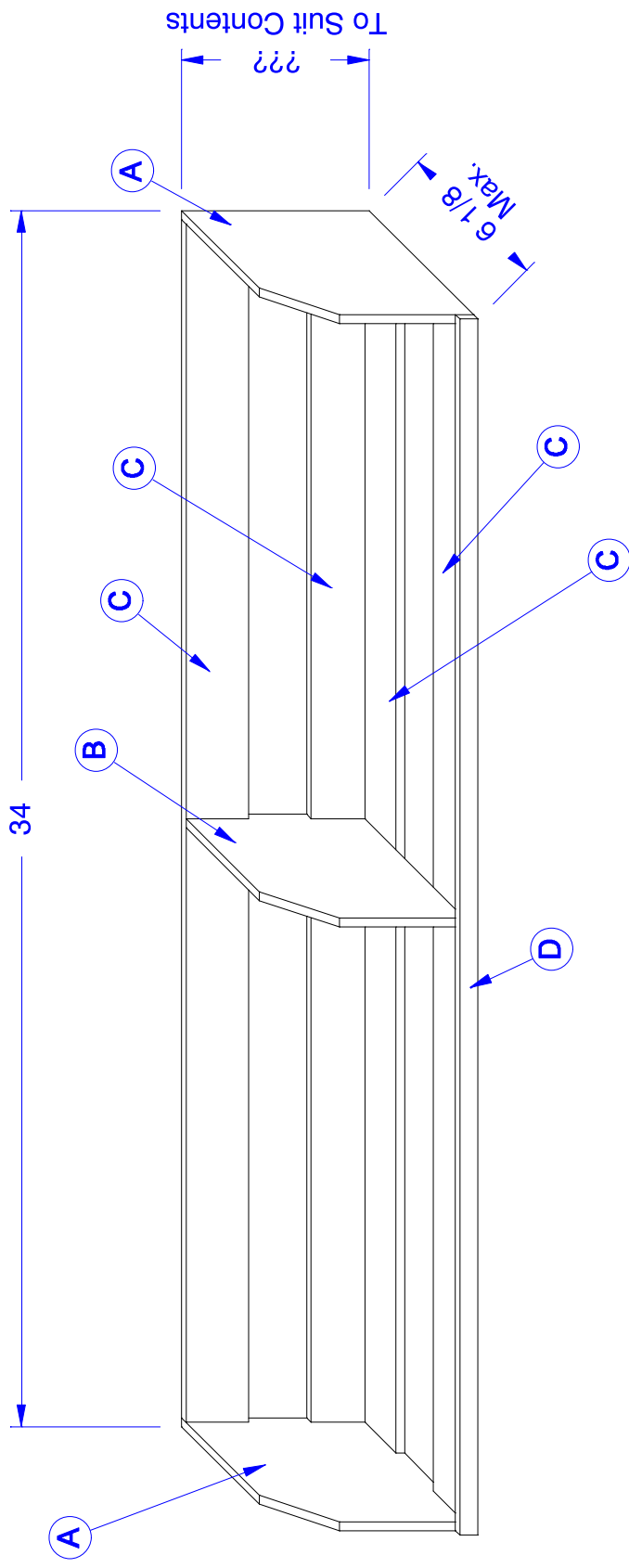
(4) Door Stiles - 1" Walnut



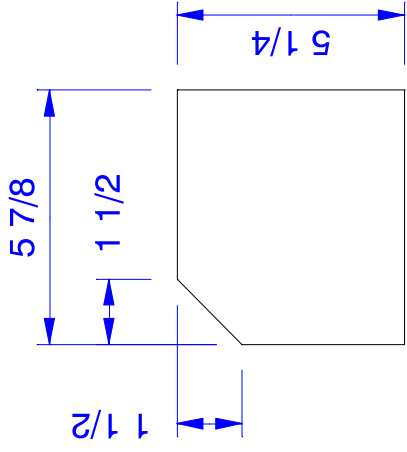


Media Baskets

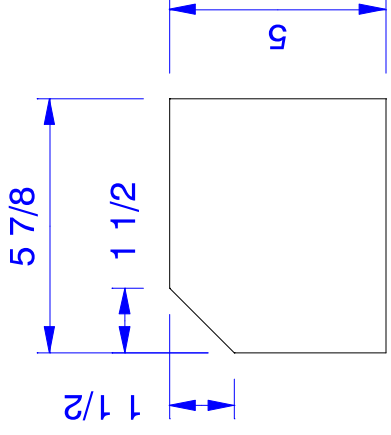
- Construct to suit the contents you will place in cabinet
- Can easily be substituted with conventional flat shelves
- 1/4" Thick Cherry was used in the video presentation.
- Material for Baskets not shown in cutting diagrams



(2) A - 1/4" Cherry



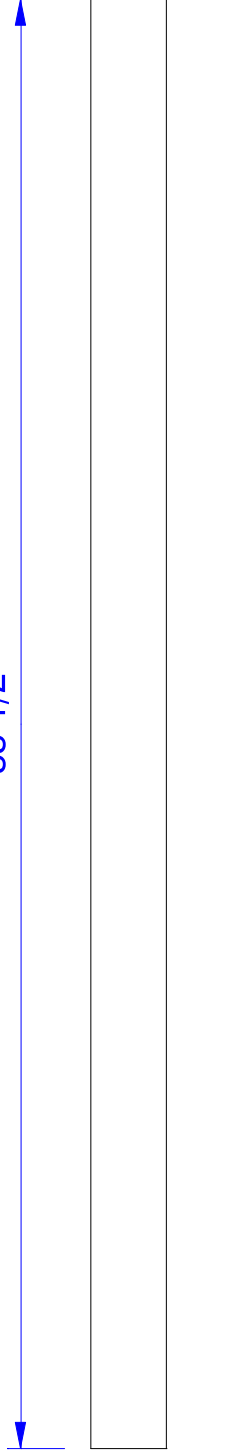
(1) B - 1/4" Cherry



1 3/4

(4) C - 1/4" Cherry

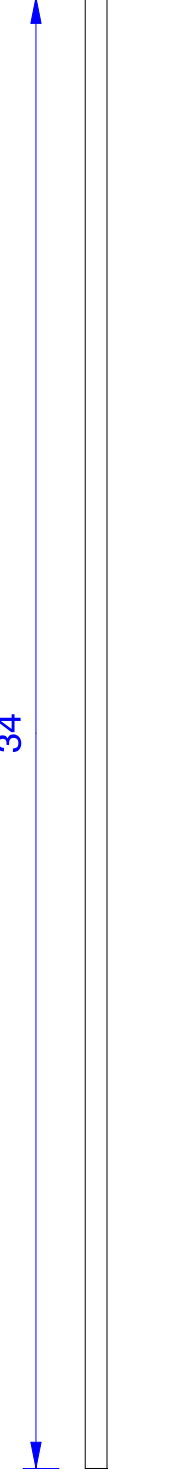
33 1/2



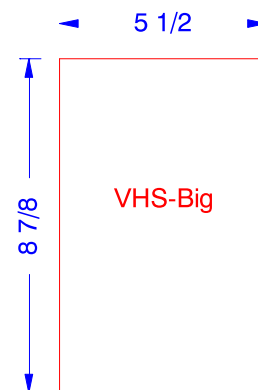
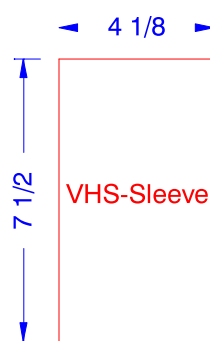
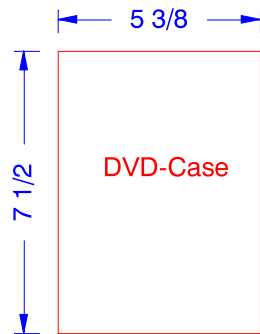
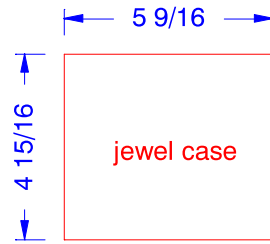
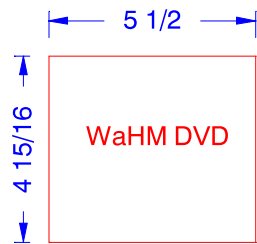
1/2

(1) D - 1/4" Cherry

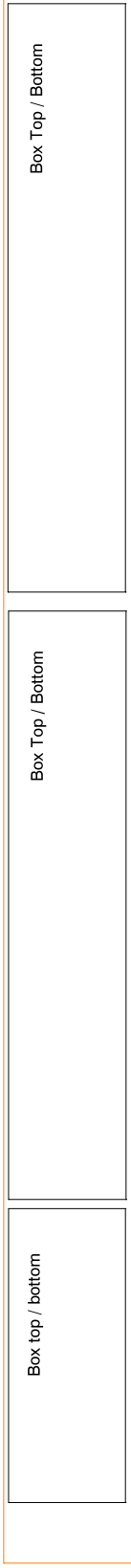
34



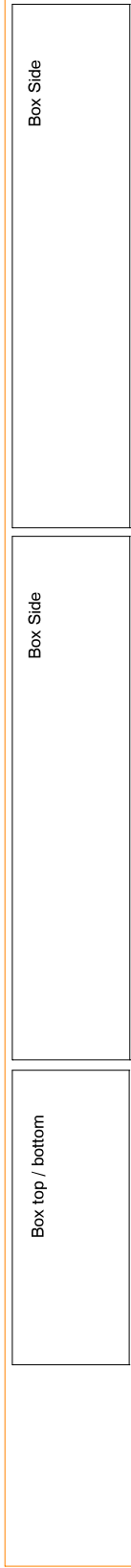
Media Package Sizes



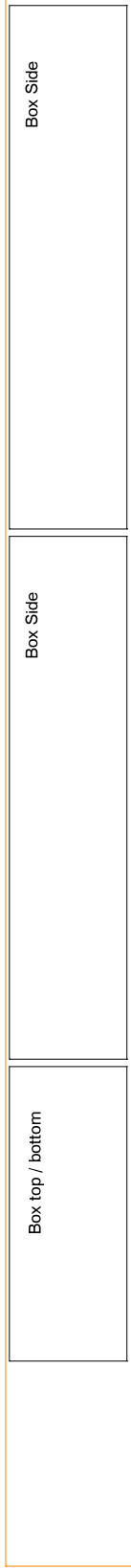
3/4" x 8" x 96" Walnut



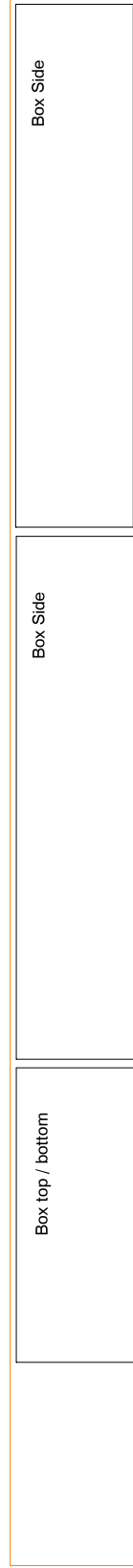
3/4" x 8" x 96" Walnut



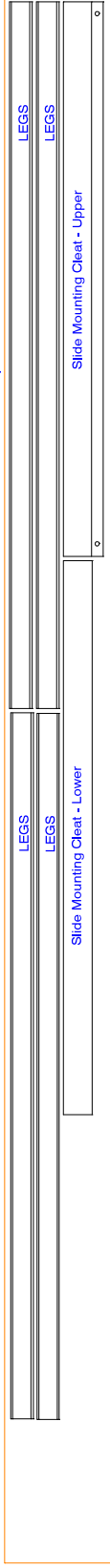
3/4" x 8" x 96" Walnut



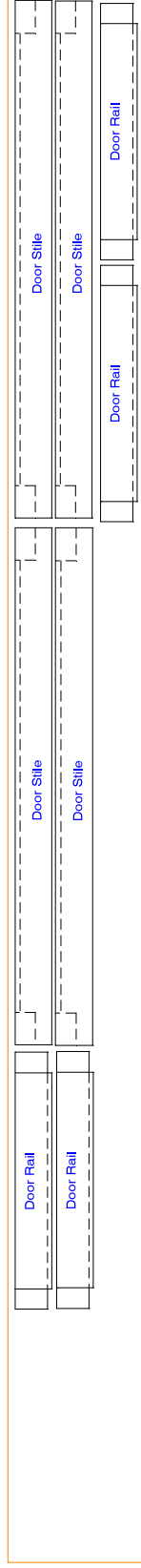
3/4" x 8" x 96" Walnut



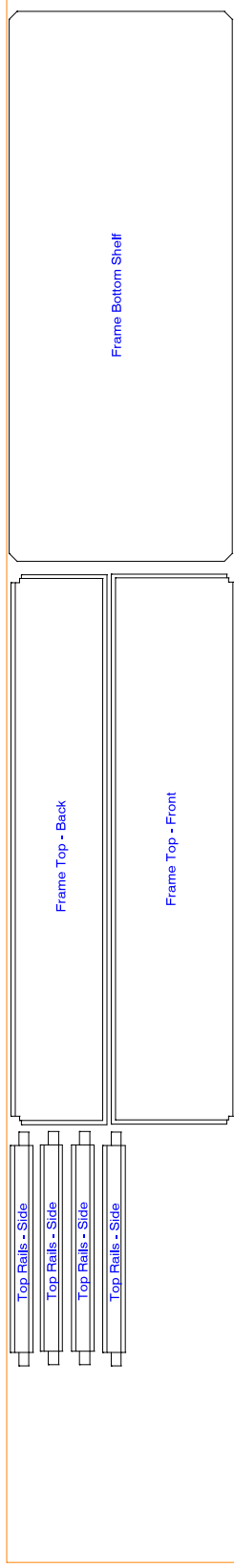
1 1/2" x 6" x 96" Walnut



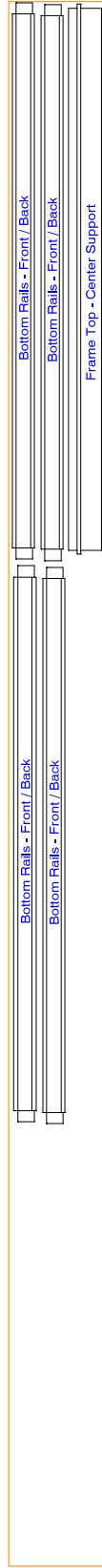
1 1/4" x 9" x 96" Walnut



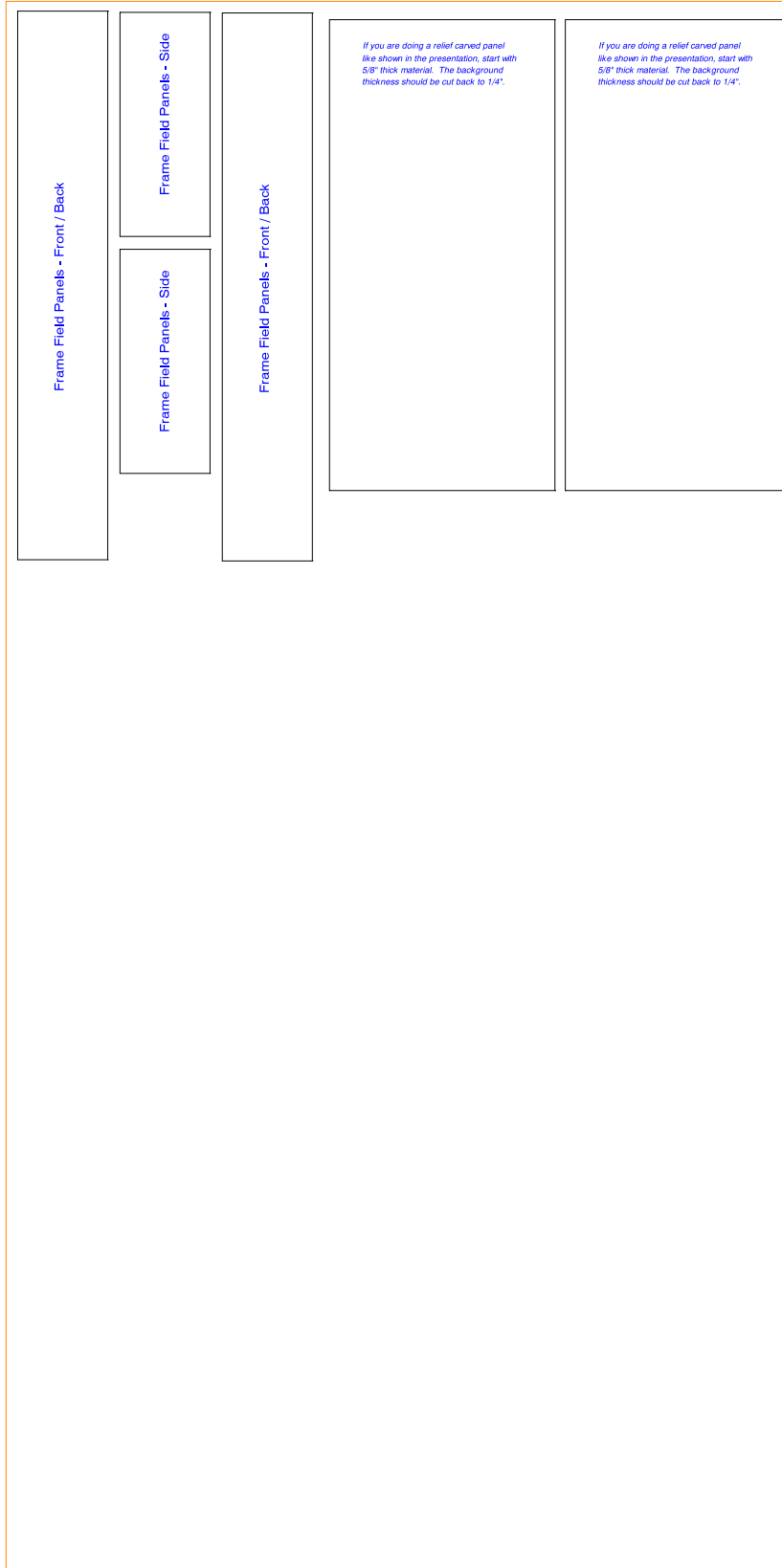
3/4" x 14 1/2" x 96" Walnut



3/4" x 6" x 96" Walnut



4' x 8' x 1/4 Walnut Plywood



4' x 8' x 3/4 Birch Plywood

Back Box Back Panel

Front Box Back Panel

Front Box Back Panel