

lines are the center line point of where I want my biscuits to be. That will make it very easy to cut the biscuit slots with the biscuit jointer oriented like so. So I'll cut these two, do the other side, and then in a similar process, we'll cut the slots at the bottom of the legs. When we cut the biscuit slots on the base and we did the layout, we were referencing the outside face of the leg. So when we do the biscuit slotting on the bottom of the leg, we need to reference that same outside surface. As you can



see, I've got the leg assembly clamped on top of my workbench and this was the surface of the biscuit jointer that we bumped up against that scrap piece of stock when we cut the slots on the base, so now we'll bump it up against our workbench

surface and cut the slots in this orientation. That way we maintain the same reference surface from the outside face of the leg to our slot location on the leg as well as the way we did it on the base. (These are #10 biscuits.)

And that is fitting up real good. Now what we'll do is we'll go through and make sure that everything is finish sanded before we glue the legs to the base. There's really not much you can do for clamping, perhaps a couple across from top to bottom and then the top will actually get assembled and installed the same exact way. With all the sanding out of the way, we can glue everything up. We'll start out by attaching the legs to the base and then once that sets up a little bit we'll move on to the top; some #10 biscuits, then the leg assembly. And we'll see if a band clamp won't hold everything together good and tight. To keep the band from sliding forward on the base, I just put a couple of clamps against the base like that and we'll just snug that up and that should do it. We'll let the glue set up, I'll repeat the process for the top, and then we can move on.

You may have noticed from previous scenes I let my panel run long at the top, now what I'll do is trim that up using a flush trim saw.

For a finish, I'm using tung oil. I'm just going to brush it on with a foam brush and get a nice wet coat on there. I'll keep it wet for a minute or two, allowing the wood to soak up what it will. Then I'll wipe off the excess with a dry rag. Depending on how it looks at that point, I may go for a coat of wipe on oil and urethane. That will of course protect



the finish and the wood a little bit more than just pure tung oil, but it will bring up the gloss and the build. I'm not sure if I want this piece to have that or not. So I'm

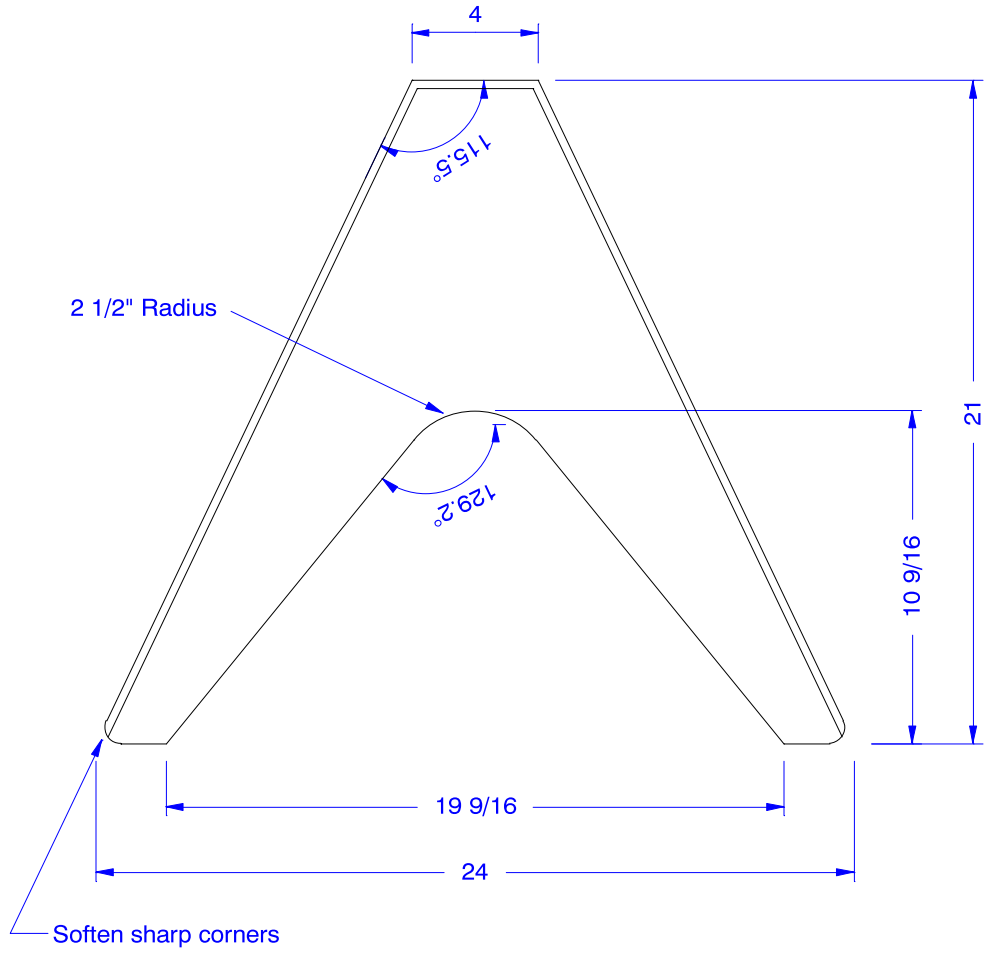
playing it by ear. We'll see how it looks after the coat of tung oil dries and we'll make the decision at that time. The only trick to wiping it off is to do your best to wipe it off to an even sheen. In other words, wipe the surface evenly so that there aren't any shiny spots.

Well, I just wasn't pleased with the finish that the tung oil was giving me. It just didn't have the texture and feel that I wanted. So I'm applying a couple of coats of a wipe on oil and urethane topcoat product. It's very easy to apply, just apply it with a cotton wad dipped in the solution, wipe it on with that same wet rag, then even up the surface by taking long even strokes across the surface with a light touch.

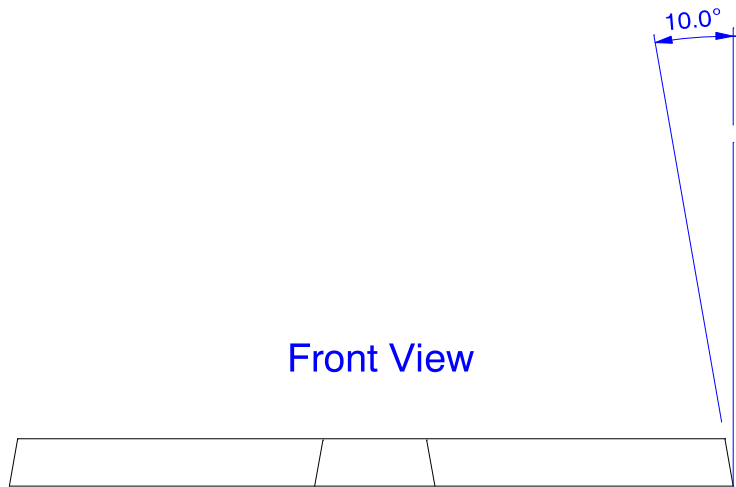


That completes the construction of our bookstand. The one last step that you'll need to do is select an appropriate foot, or pad, for the bottom of the base, depending on the type of floor that this is going on. You'll of course need to find a nice place in your home, get a good book to place on it, perhaps a photo album, whatever seems to work for your family environment.

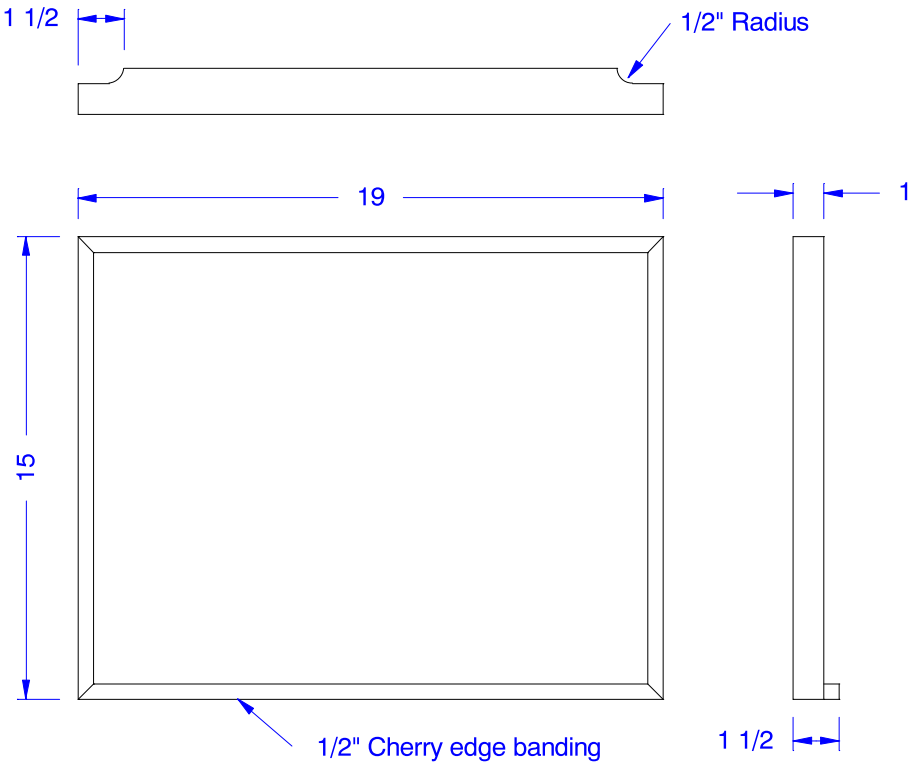
Base - 1" Cherry



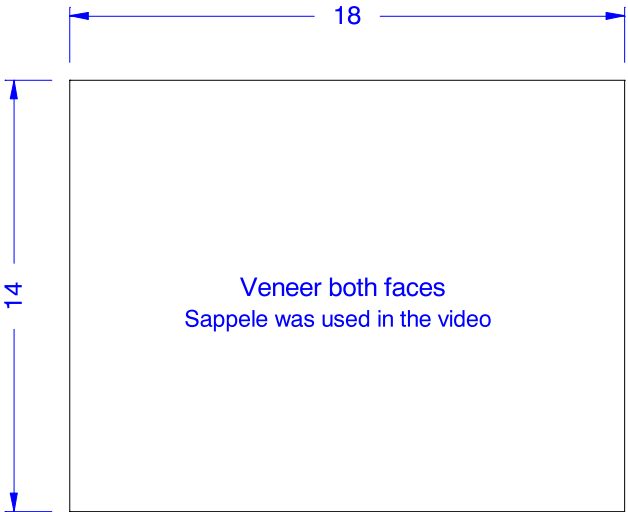
Front View



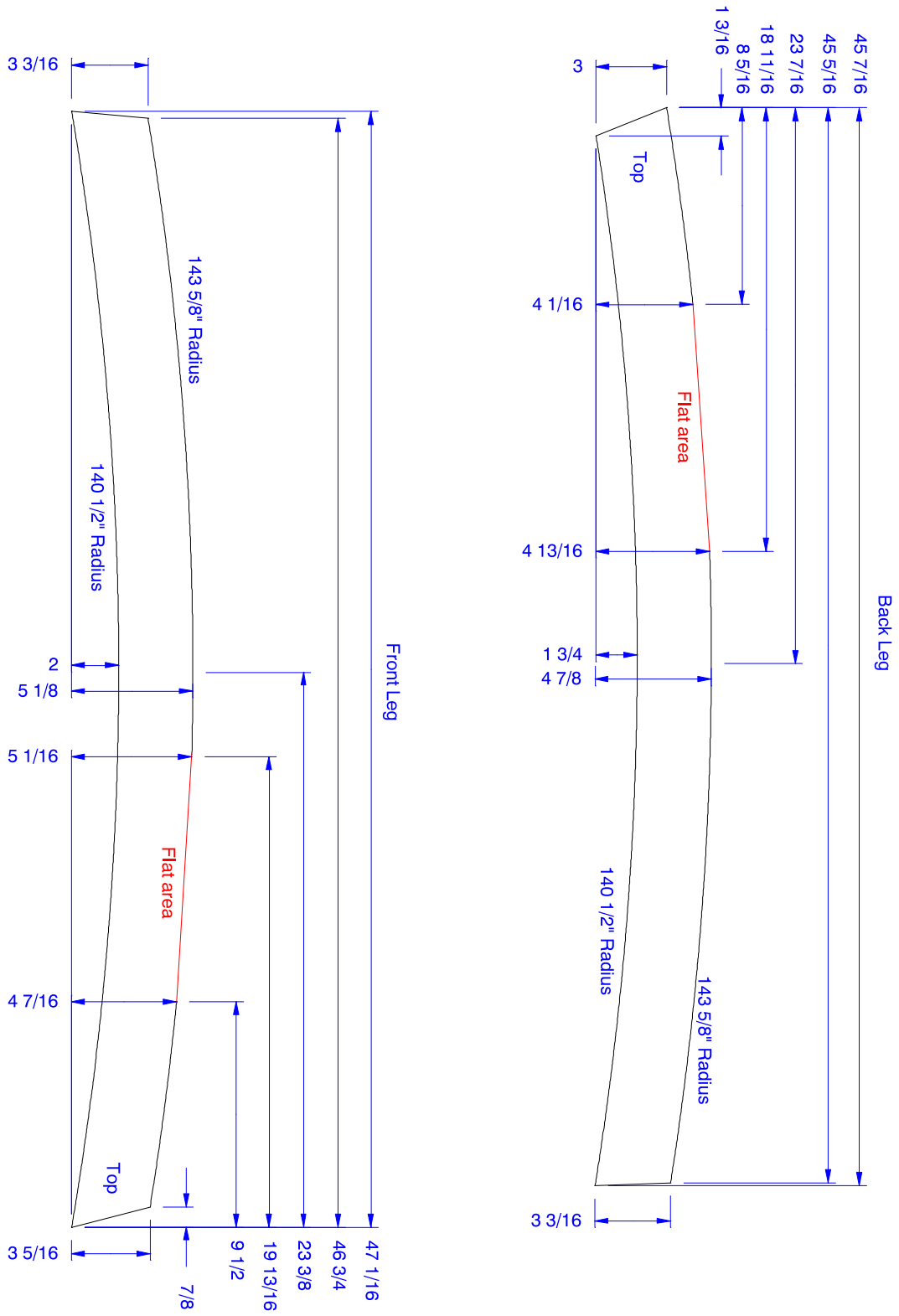
Top Assembly



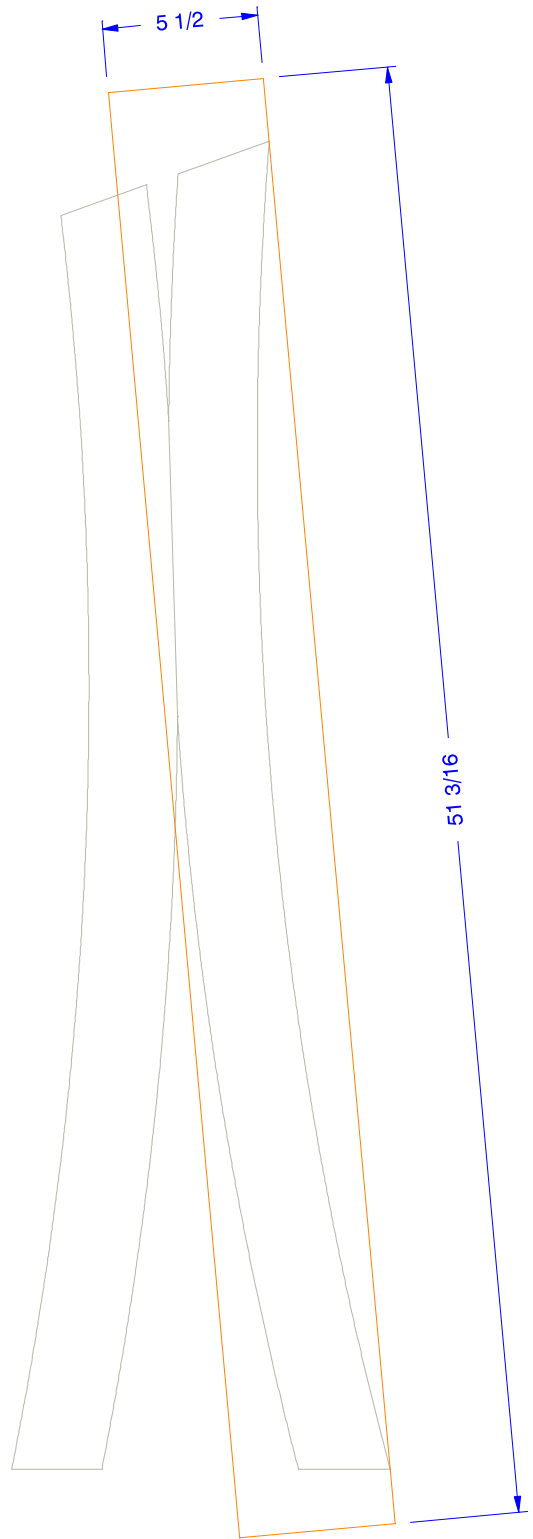
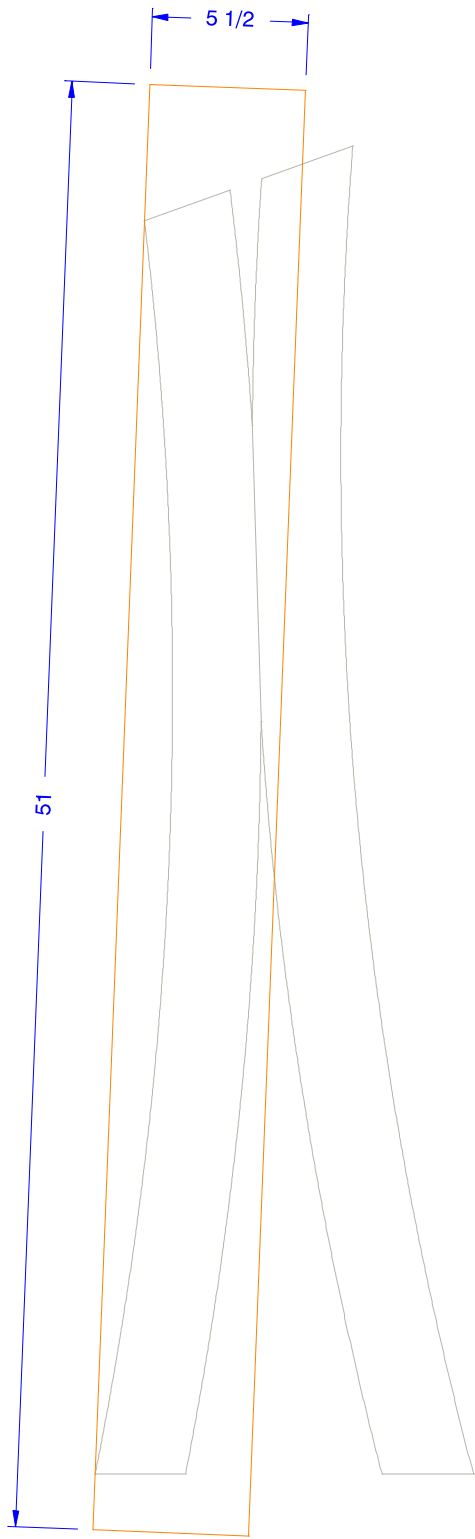
Top Core - 1" MDF



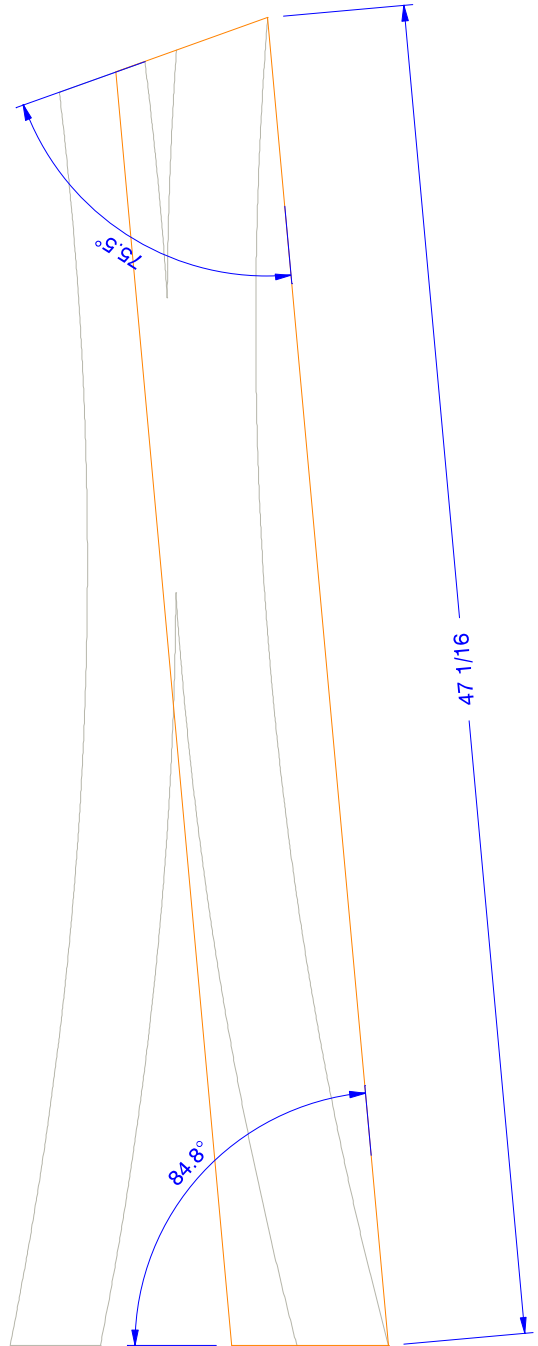
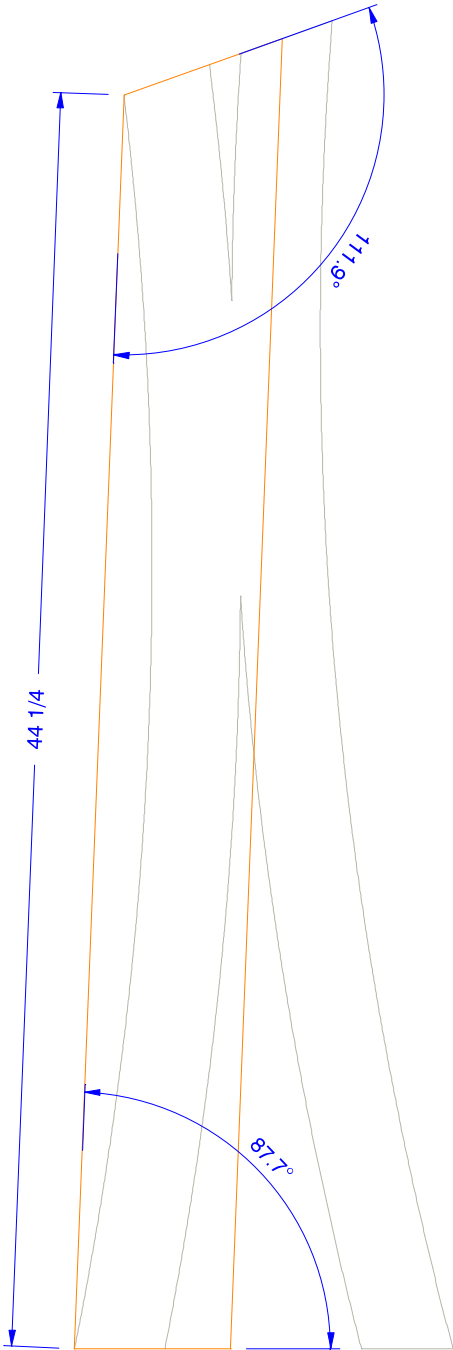
Legs - 1" Cherry



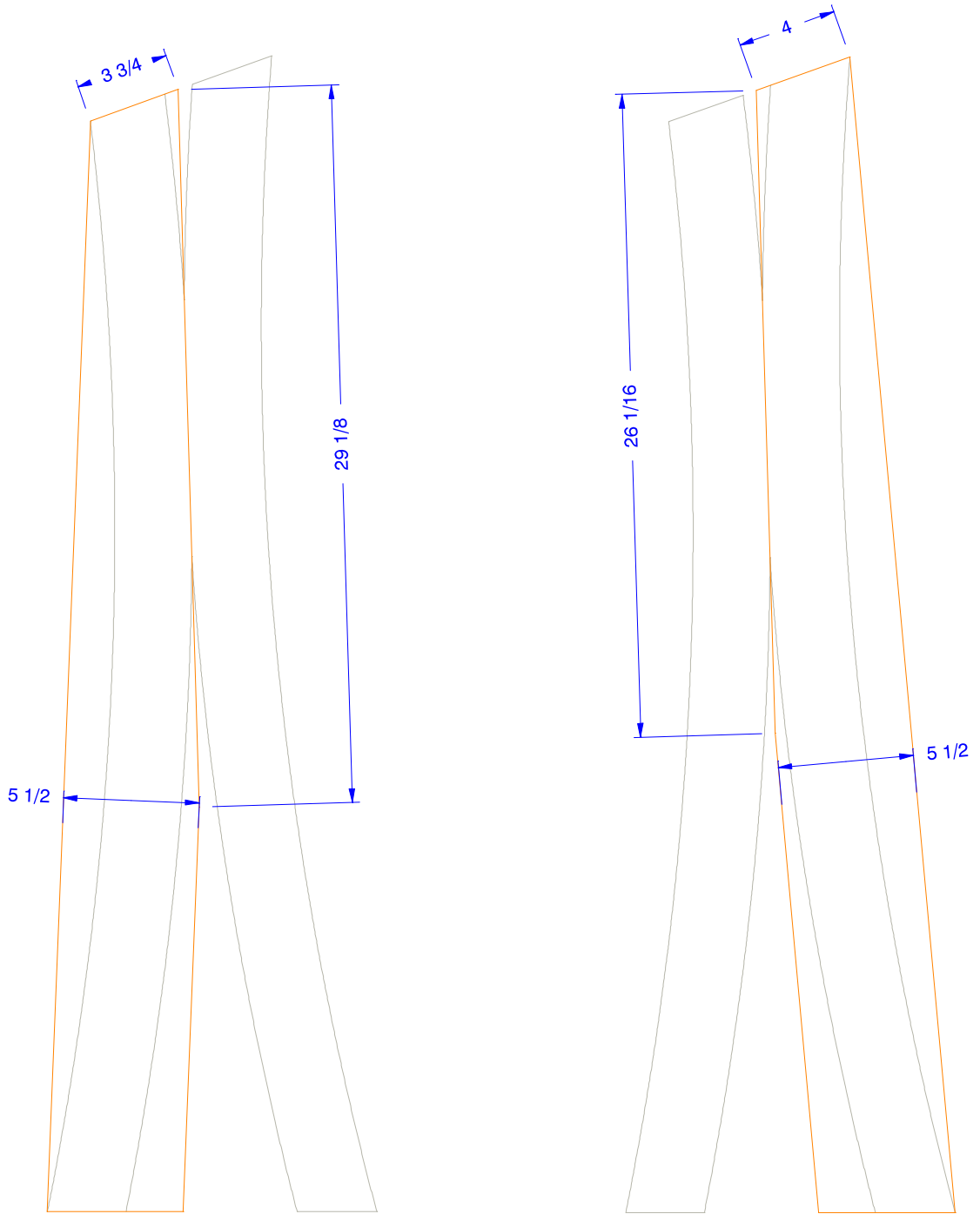
Legs - Milling Step One



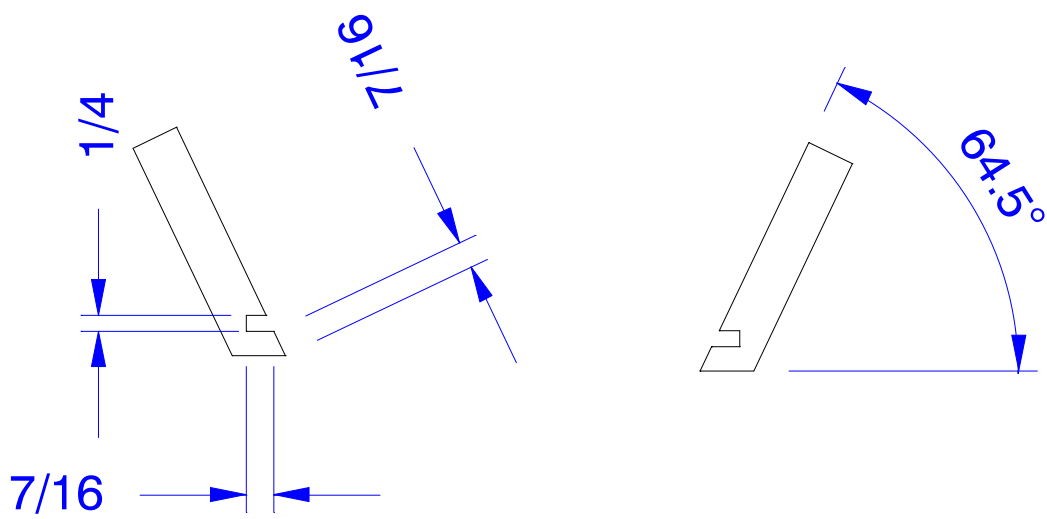
Legs - Milling Step Two



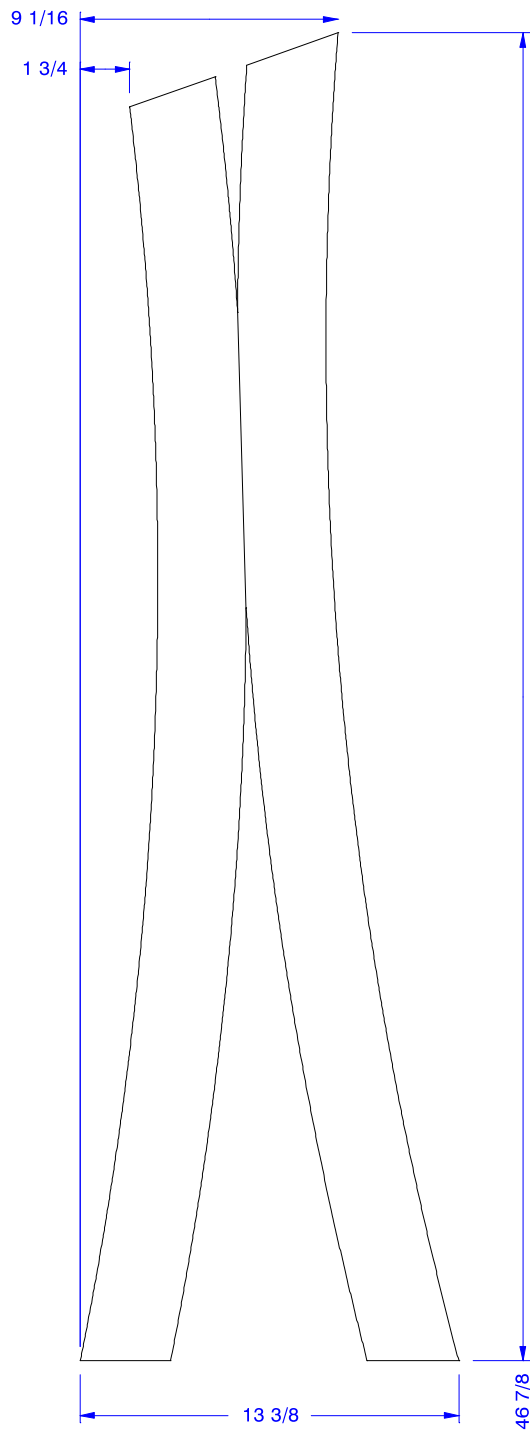
Legs - Milling Step Three



Legs - Groove Detail

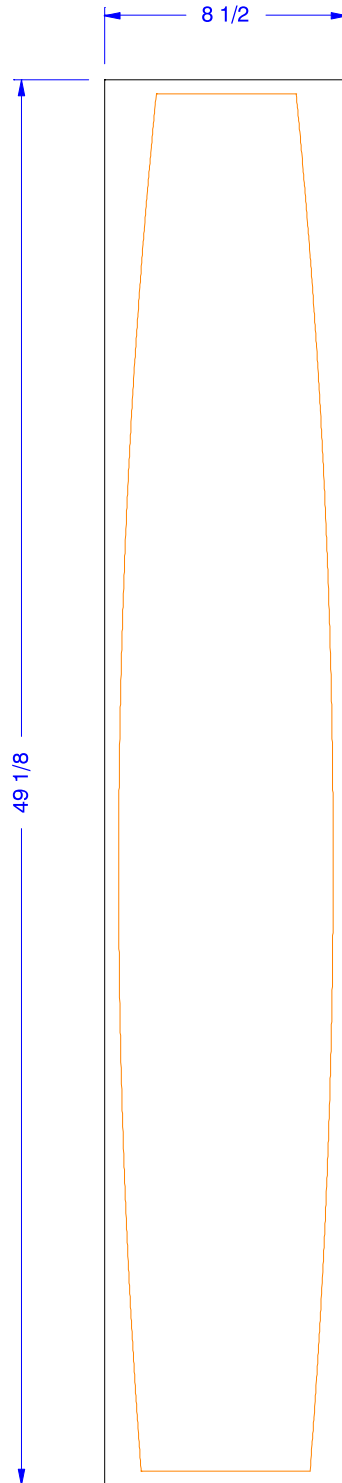


Legs - Assembled Dimensions



Front Panel - 1/4" Plywood - Sappele

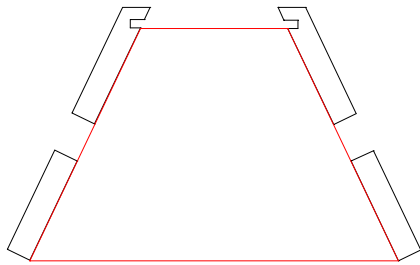
Dimensions shown are for a rough blank allowing 1/2" trimming



Assembly Jigs (Templates) 1/4" plywood or hardboard

You may need to adjust sizes slightly to accommodate your parts

Top Jig



Bottom Jig

