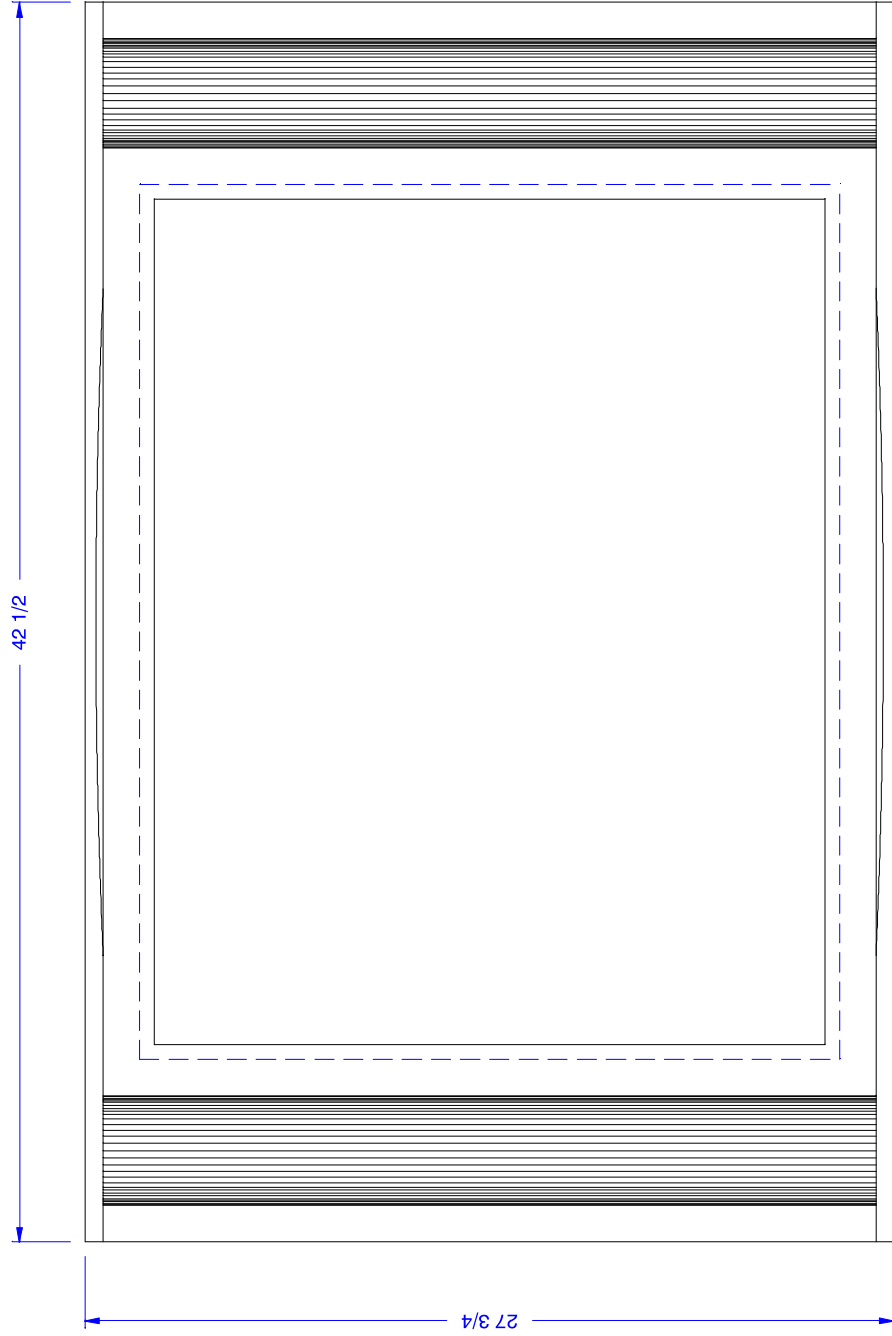
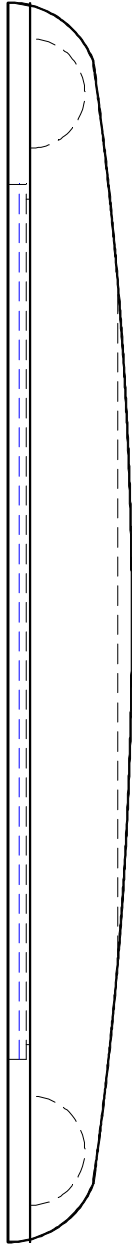
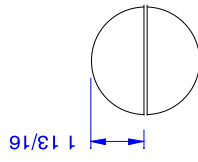
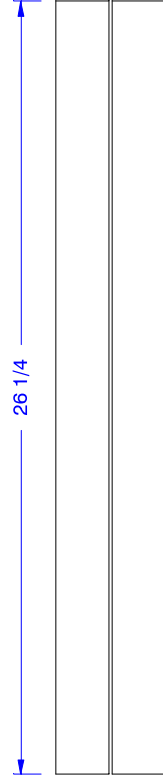
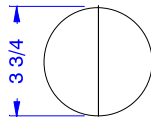
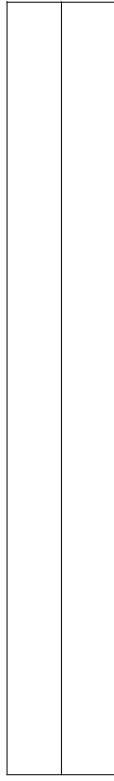
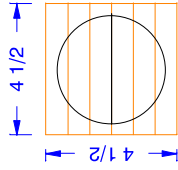
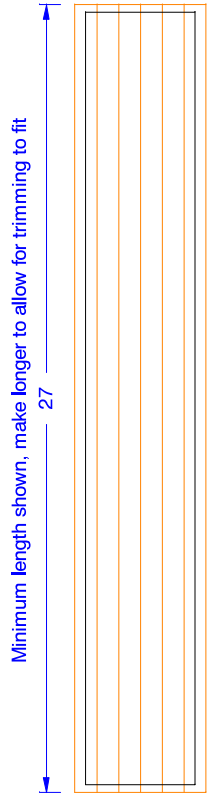


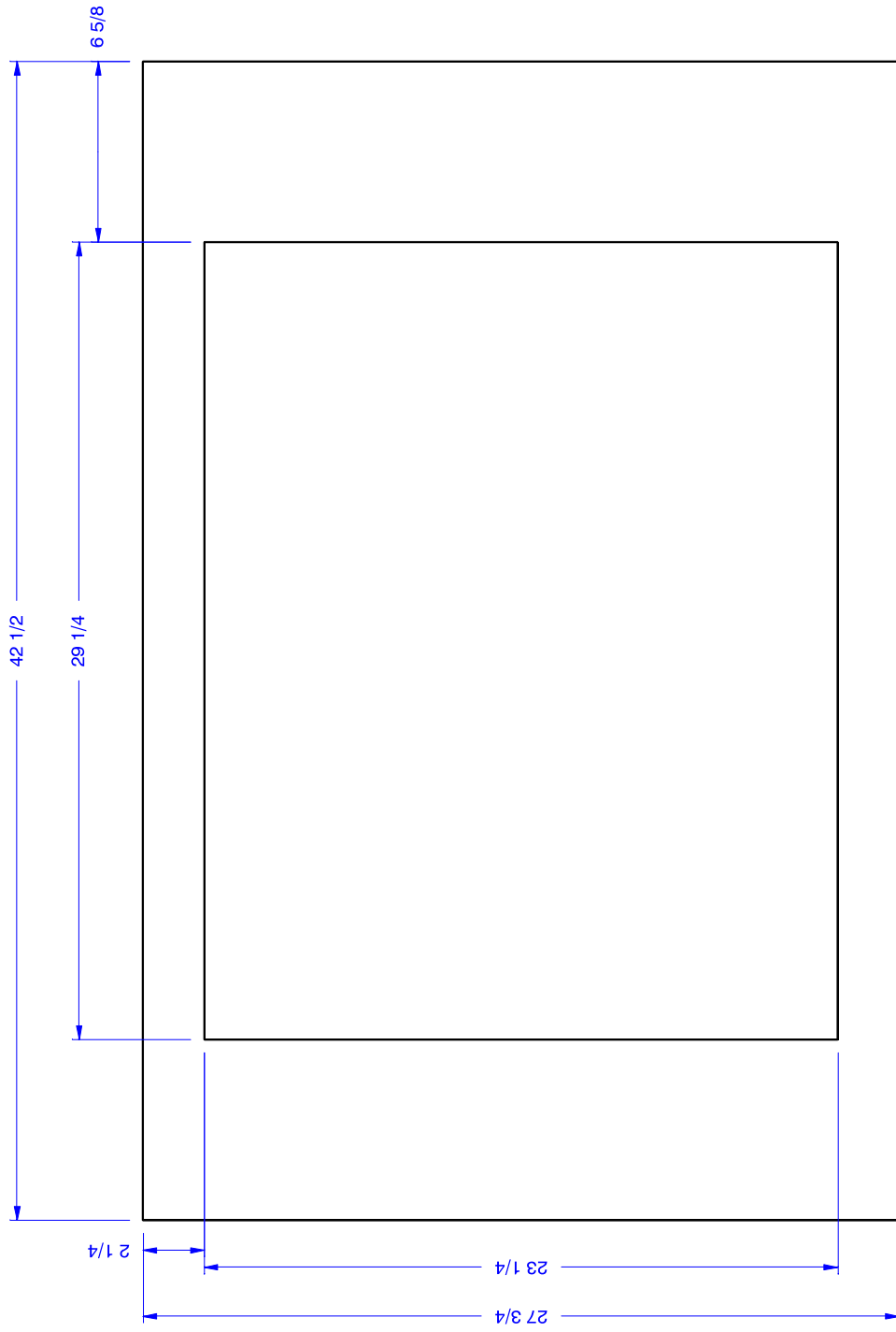
Join top and bottom shelves to back with (5) #8 x 1 1/4" screws  
Join columns to shelves with (2) #8 x 1 1/4" screws - 1 each end  
Join columns to back with (3) #8 x 1 1/4" screws



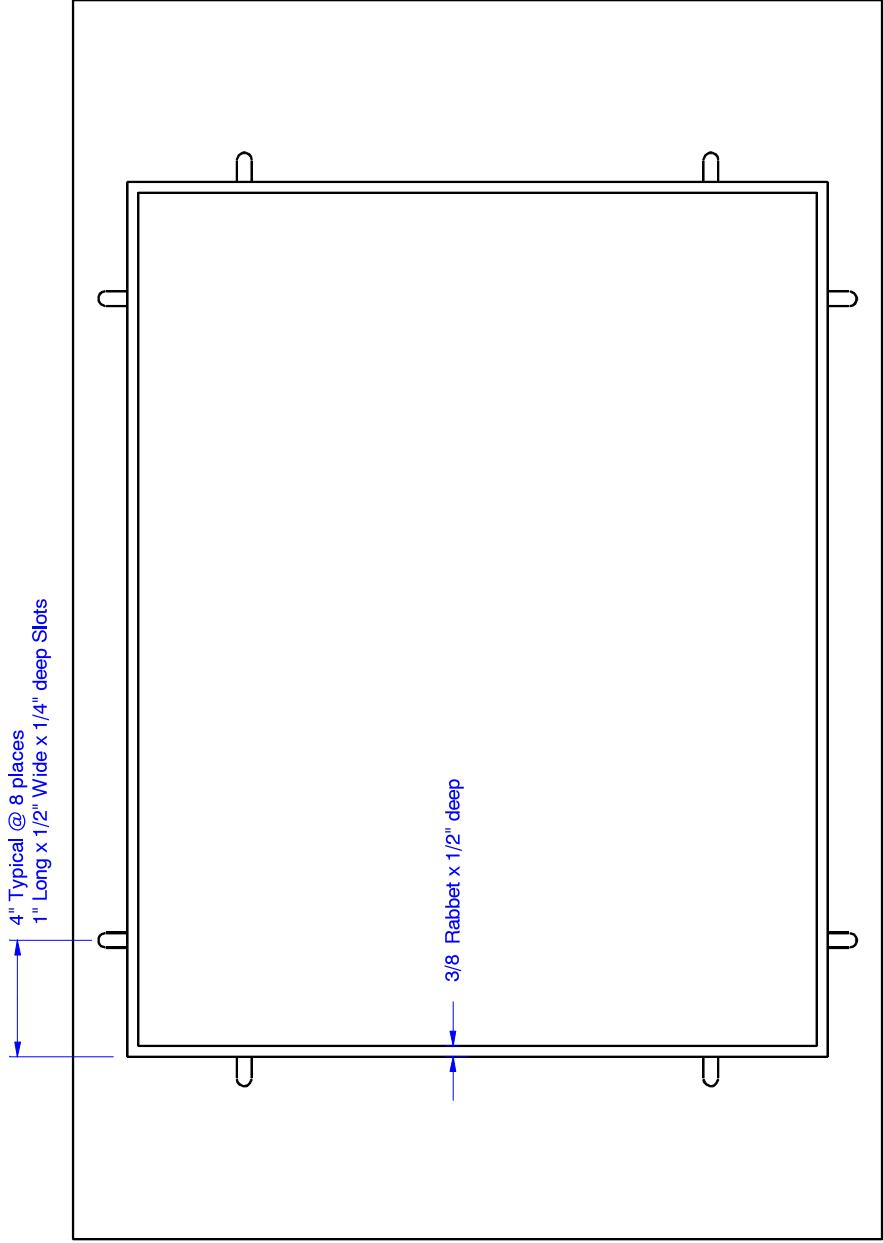
# "Half Columns" MDF



Frame - 3/4" MDF (Front view)



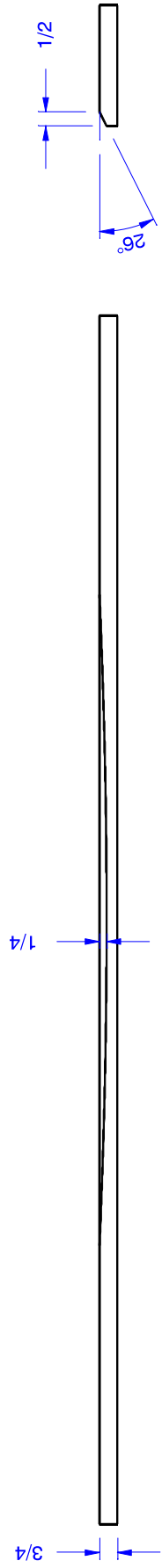
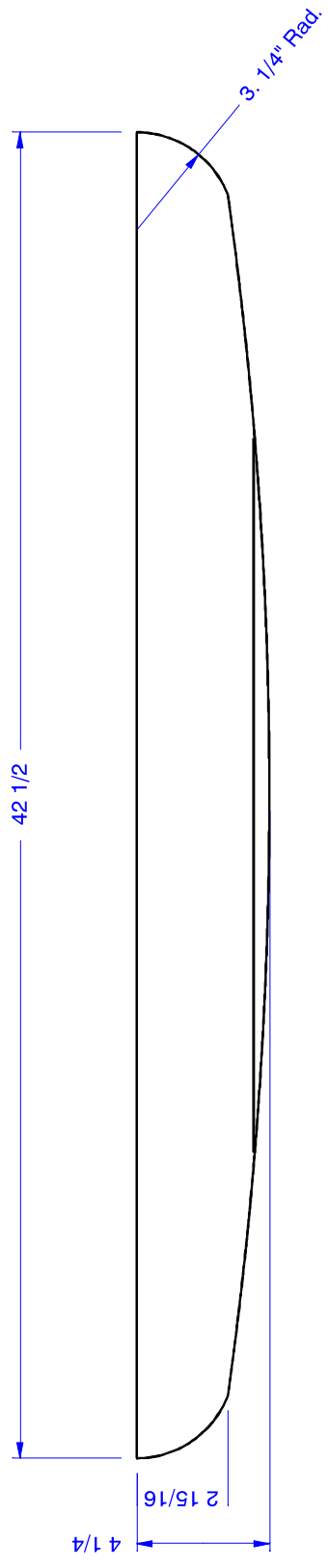
Frame - 3/4" MDF (Back view)

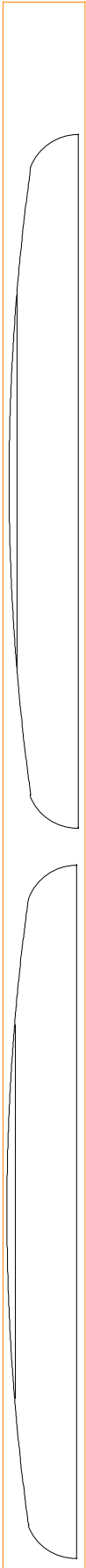


4" Typical @ 8 places  
1" Long x 1/2" Wide x 1/4" deep Slots

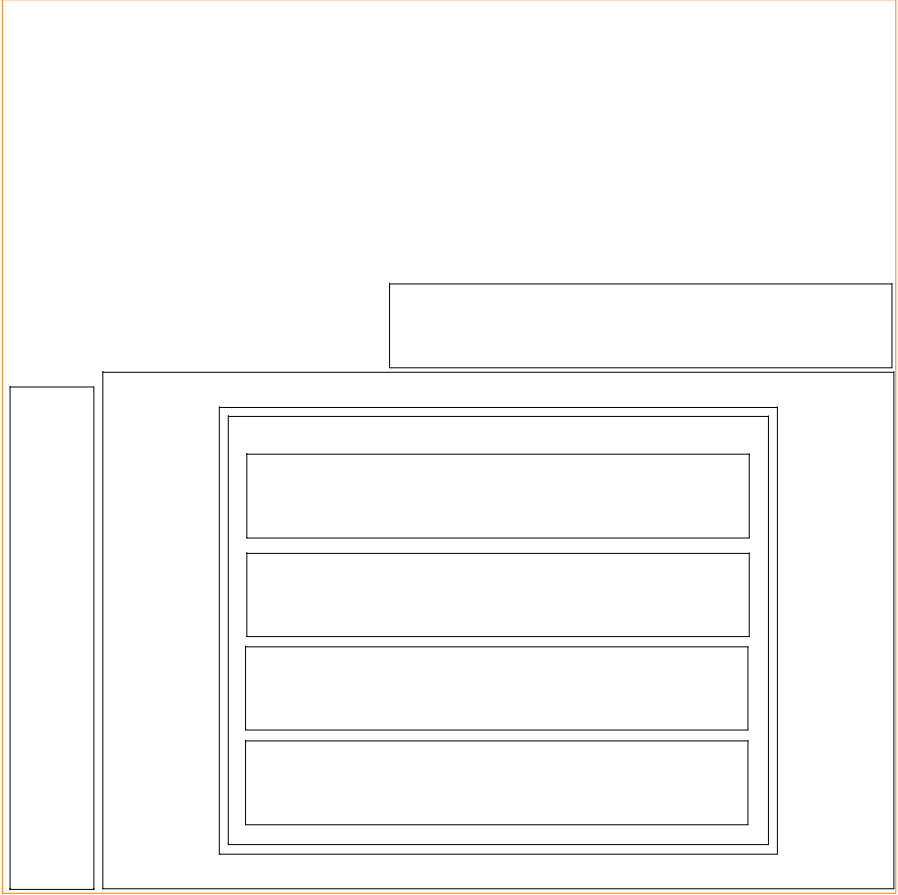
3/8 Rabbet x 1/2" deep

(2) Shelves - 3/4" Maple





3/4" x 5" x 96" Maple



3/4" x 48" x 48" MDF