

OPTCO



**CHAMPIONS OF
WATERWORKS
INNOVATION**

**2025 SYSTEMS+
SOLUTIONS**



VALVE AUTOMATION

OPTCO ensures trouble-free operation of critical plant processes with in-house valve automation & field services. From design and selection to mounting, testing, commissioning and support, OPTCO keeps your valves turning.

- UL/CSA & AWWA C542 compliance
- 1PH & 3PH power, all voltages
- Torque ranges to over 1 million Nm
- Speed controls, advanced diagnostics and monitoring functions; Bluetooth, local display and control options, all communication protocols
- Fail-safe & explosion-proof ranges



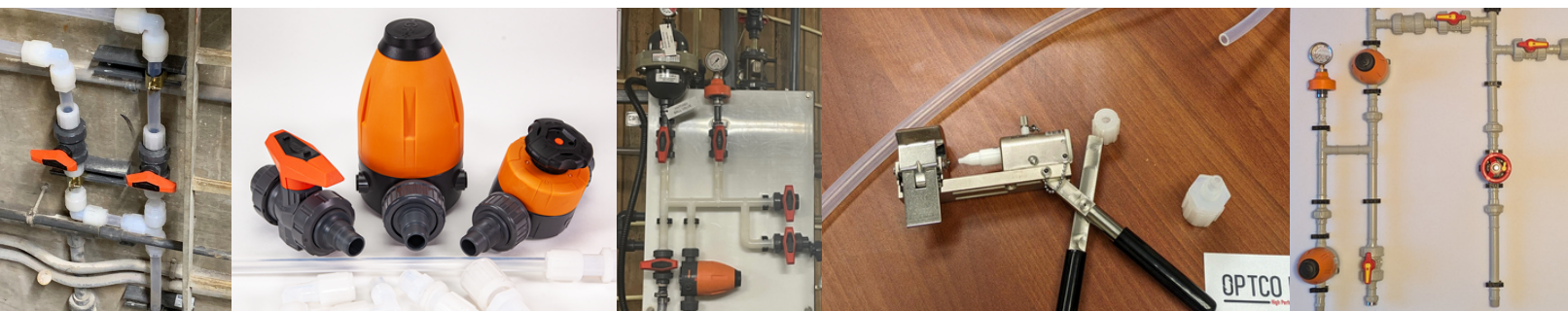
Specializing in retrofit applications from small diameter ball valves to giant double-stem weir gates.



FABRICATION SERVICES

OPTCO provides leak-free upgrades to chemical feed systems, and/or components and training with IR-Fusion welded plastics and flared PFA tubing. In conjunction with our valve automation services, OPTCO delivers robust valve accessories to meet all operational challenges.

- Turn-key custom IR-Fusion welded & flared chemical feed panels in PP, PVDF, ECTFE & PFA
- Welder training & rental
- Superior valves, custom fabricated fittings & leak-free thread sealants
- **Stem extensions, pedestals & floorstands, pipe & valve supports, chainwheel operators & mud valves**



WATERWORKS SPECIALTIES

Multi/Joint Restraint Connections

- Multi/Joint wide-ranged restraint couplings, flange adapters & caps
- 50mm to 1040mm connects C900, C909, DI, CI, CS, SS, AC, & HDPE
- 16 Degrees of deflection, NSF approved



Lynx-Pex Municipal Service Tube

- PEX-b material, designed to meet and exceed ANSI/AWWA C904, ASTM F876, and CSA B137.5 requirements. Complies with NSF/ANSI/CAN 61 and NSF/ANSI 14
- SDR-9 CTS OD's 3/4", 1", 1-1/4", 1-1/2", 2"
- Coil lengths: 100ft, 300ft, 500ft, and 1,000ft



VSI Waterworks

- Comprehensive range of valves designed and manufactured to exceed AWWA specs
- Includes butterfly, gate, check, plug, air, combination, and ball valves with NSF/ANSI/CAN 61, 14 and UL approval



RF Valve & Vent-O-Mat

- Superior non-stretch pinch valves from 1" - 60" ID, full port, Standard ASME/ANSI B16.10, DIN 3205 F5/F15, and ISO 5752 face-to-face dimensions, working pressures to 600 psi
- Patented air valves with compact design providing four functions in a single valve: high volume, surge protection, pressurized air, and vacuum relief. NSF/ANSI/CAN 61



BTS, Sanitary System Defender

- Self-contained, remotely monitored air injection system that integrates with sanitary lift station pumps to aerate & scour the force main and eliminate anaerobic sulfate-reducing bacteria (SRB)



Aquaturno, SFA Enviro

- Global leader in the design and manufacture of Mixers, Aerators, Decanters and Foam Breakers for water and wastewater treatment, founded on their patented SCREWPELLER technology



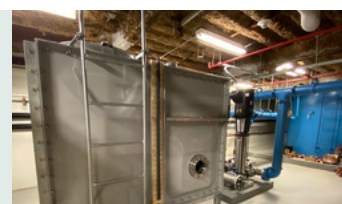
Schunemann Filters

- Patented German engineered and manufactured automatic self-cleaning filters
- Flow rates from 3.5 m3/h to 8.000 m3/h, designed to ASME VIII Div.1



FTC - Fiber Technology Corporation

- CSA B126, AWWA D121, & NSF 61 & 372 modular panel FRP tanks, available from 260 gallons to 2.5 million gallons for all temperature and weather extremes, indoor and outdoor use



SEKO Dosing Pumps

- Solenoid & motor driven pumps with powerful microprocessor technologies
- Premium PTFE & PVDF materials as a standard, with industry leading 5-Year hassle-free pump head warranty



OPTCO

OPTCO Ltd. is a solutions company focused on providing sustainable products that last. We are champions of waterworks innovation serving the water and wastewater community & consulting with industry to help improve plant efficiency.

The name **OPTCO** is an acronym derived from the organizations founding principal, to Optimize Total Cost of Ownership.

If **OPTCO** is making the world a better place by providing an ethically produced product that will last longer, it is fulfilling its purpose.

100% CANADIAN OWNED AND OPERATED

WEST

7120 107 Avenue SE
Calgary, Alberta T2C 5N6
+1 (587)216-3100
sales@optco.ca

EAST

5-190 Minet's Point Road
Barrie, Ontario L4N 8J8
+1 (647) 764-6800
sales@optco.ca

KEY PARTNERS

