

AERATOR  
/ MIXERS



# AER-SL

HIGH-SPEED DIRECT DRIVE SUBMERSIBLE AERATOR

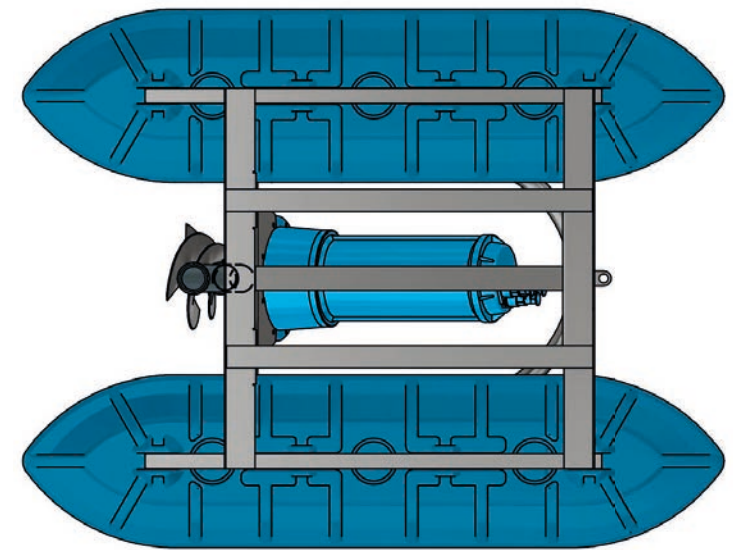
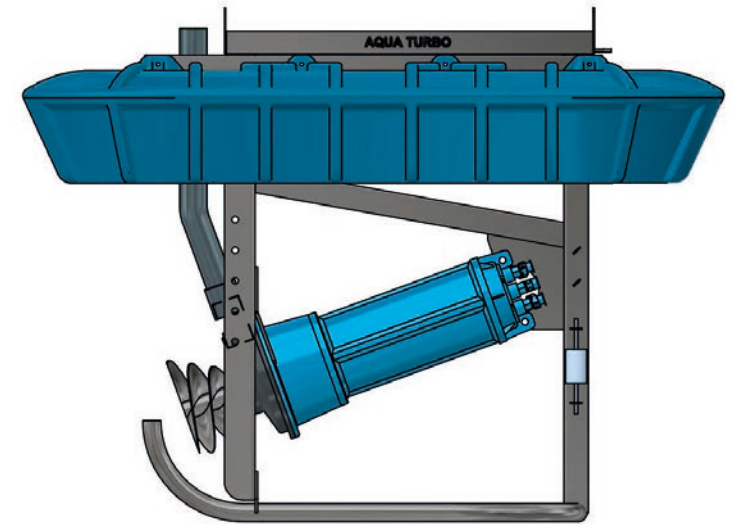


DIRECTIONAL FLOW  
AERATOR / MIXER



# MAIN CHARACTERISTICS

Aspirator Aerator featuring a unique impeller and vacuum chamber design drawing air below the water level and dispersing as fine to medium sizes Oxygen bubbles directly into waste water to provide directional flow.





## ADVANTAGES

IDEAL FOR AERATION AND DIRECTIONAL FLOW GENERATION PROVIDED BY EVERY UNIT

DIRECTIONAL AERATION + MIXING

USED FOR STORAGE, EQUALIZATION, LAGOONS, SHALLOW TANKS

NITRIFICATION/DENITRIFICATION

SBR PROCESSORS

INDEPENDENT AERATION + MIXING (DUAL SPEED OPERATION OPTIONAL)

NON-CLOGGING IMPELLER + INDEPENDENT VACUUM CHAMBER DESIGN

ROBUST + COMPACT DESIGN - MINIMAL VIBRATION

EASY TO INSTALL & REMOVE FROM ANY TANK OR LAGOON

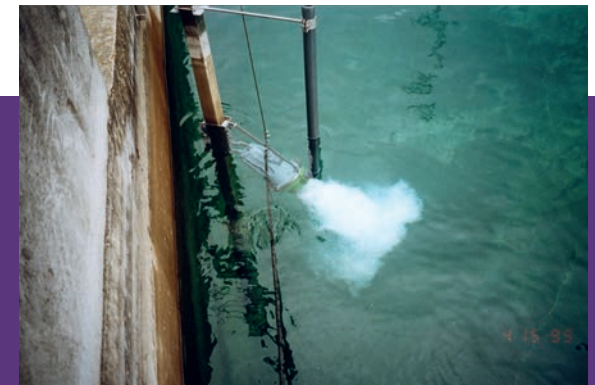
## COMPONENTS

- 1.5 - 30kw Drive Motors
- 2 + 4-Pole + Dual Speed, Direct Drives
- Submersible Motor - IP 68 protection
- AISI 304 / 316 or special SS



## OPTIONS

- Multiple Mounting options which allow use in many various basin geometries
- Rail, Floor + Float Mount Options
- Various operating angles - 0 -180°
- One x Submerged drive
- Fixed or Variable Water Levels



## A STEP AHEAD IN WATER TECHNOLOGY

[sfa-enviro.com](http://sfa-enviro.com)

 [@sfa\\_enviro](https://twitter.com/sfa_enviro)

