

OFGA SERIE

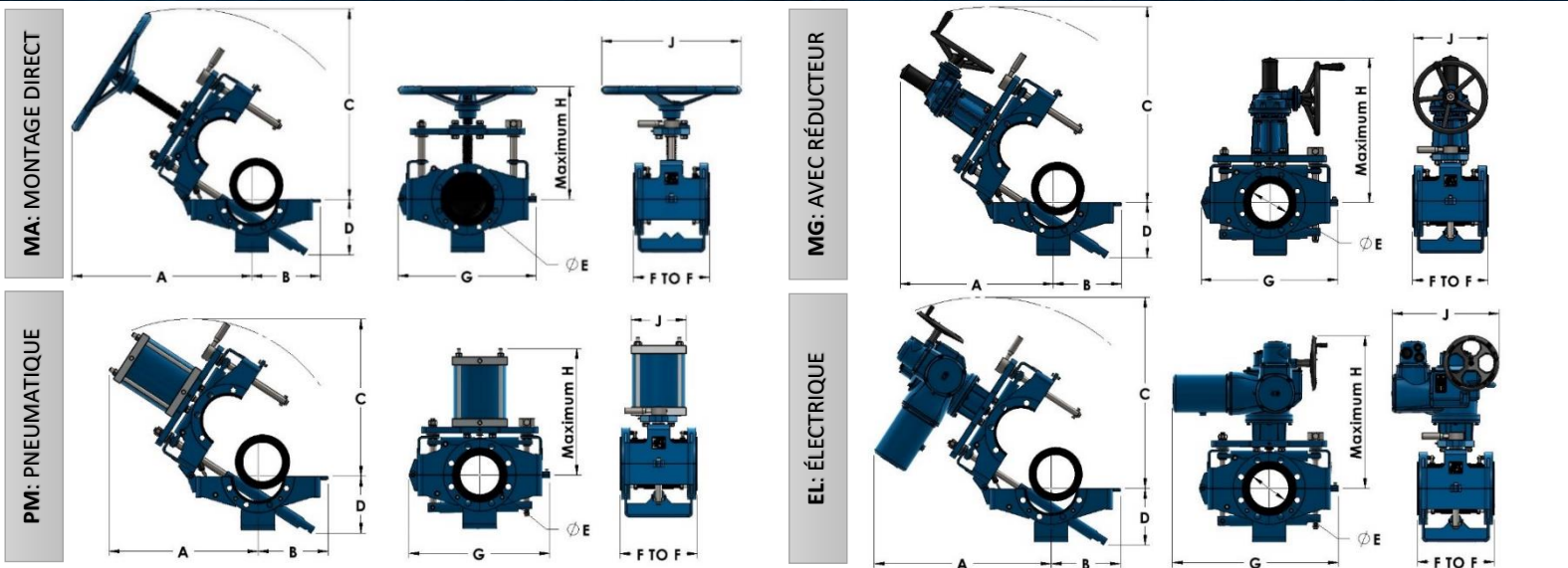


PRODUCT SPECIFICATIONS:

- Frame material:
 - Welded steel
- Sizes:
 - 2" to 12" or 50mm to 300mm
- Pressure category:
 - 150psi or 10bar
- Flanges:
 - ANSI or DIN, other standard available on request.
- Actuators:
 - Direct mounted handwheel
 - Handwheel with Gearbox
 - Pneumatic
 - Electric
 - Hydraulic ***on request only***
- Elastomere Sleeve:
 - Natural rubber
 - EPDM/ NSF 61
 - Neoprene
 - NBR
 - Polyurethane
 - Viton



OFGA : Open Frame General Applications



| VALVE SIZE inch (mm) | F to F | A | | | | B | C | | | | D | WEIGHT lbs (kg) | | | |
|-------------------------|----------------|-------------------|-------------------|----------------------------------|----------------------------------|-------------------|-------------------|----------------------------------|----------------------------------|----------------------------------|-------------------|--------------------------------|----------------------------------|------------------------------|-----------------------------|
| | | MA | MG | PM | EL | | MA | MG | PM | EL | | MA | MG | PM | EL |
| 2 (50) | 7 (178) | 13-7/16 (341) | (3) | 12-15/16 ⁽⁴⁾ (328) | 20-5/8 ⁽⁴⁾ (523) | 6-9/16 (166) | 14-9/16 (370) | (3) | 14-7/8 ⁽⁴⁾ (378) | 21-15/16 ⁽⁴⁾ (556) | 5-1/4 (133) | 43 (19) | (3) | 44 ⁽⁴⁾ (20) | 58 ⁽⁴⁾ (27) |
| 3 (80) | 8 (203) | 17-15/16 (456) | (3) | 16-13/16 ⁽⁴⁾ (427) | 19-3/16 ⁽⁴⁾ (488) | 7-3/8 (187) | 18-3/4 (476) | (3) | 17-3/8 ⁽⁴⁾ (442) | 20-1/8 ⁽⁴⁾ (512) | 6-1/4 (158) | 65 (29) | (3) | 75 ⁽⁴⁾ (34) | 131 ⁽⁴⁾ (59) |
| 4 (100) | 10 (254) | 19-15/16 (506) | (3) | 18-13/16 ⁽⁴⁾ (479) | 20-3/4 ⁽⁴⁾ (526) | 8-13/16 (224) | 20-7/8 (531) | (3) | 20-1/8 ⁽⁴⁾ (611) | 21-3/4 ⁽⁴⁾ (553) | 7-3/16 (183) | 97 (44) | (3) | 108 ⁽⁴⁾ (49) | 173 ⁽⁴⁾ (78) |
| 6 (150) | 12 (305) | 28-3/8 (721) | 25-7/16 (645) | 23-3/16 ⁽⁴⁾ (589) | 27-9/16 ⁽⁴⁾ (701) | 10-13/16 (275) | 29-7/8 (759) | 31-1/8 (791) | 24-3/8 ⁽⁴⁾ (619) | 29-13/16 ⁽⁴⁾ (757) | 8-13/16 (224) | 161 (73) | 190 (86) | 171 ⁽⁴⁾ (78) | 319 ⁽⁴⁾ (145) |
| 8 (200) | 16 (406) | 31-7/8 (810) | 28-5/8 (758) | 27-5/8 ⁽⁴⁾ (701) | 29-3/16 ⁽⁴⁾ (741) | 12-7/16 (315) | 33-7/16 (849) | 33-1/16 (840) | 28-11/16 ⁽⁴⁾ (728) | 31-5/8 ⁽⁴⁾ (804) | 11-5/16 (288) | 227 (103) | 258 (117) | 267 ⁽⁴⁾ (121) | 386 ⁽⁴⁾ (175) |
| 10 (250) | 20 (508) | (2) | 28-7/8 (734) | 30-7/16 ⁽⁴⁾ (773) | 30-3/4 ⁽⁴⁾ (782) | 15 (381) | (2) | 35-11/16 (906) | 33-7/16 ⁽⁴⁾ (849) | 34-1/2 ⁽⁴⁾ (877) | 13-13/16 (351) | (2) | 410 (186) | 426 ⁽⁴⁾ (194) | 531 ⁽⁴⁾ (241) |
| 12 (300) | 24 (610) | (2) | 37-11/16 (957) | 37-5/8 ⁽⁴⁾ (956) | 34-1/8 ⁽⁴⁾ (866) | 16-5/16 (414) | (2) | 40-3/16 (1021) | 39-1/4 ⁽⁴⁾ (997) | 37-1/2 ⁽⁴⁾ (953) | 16-7/8 (429) | (2) | 626 (285) | 656 ⁽⁴⁾ (298) | 717 ⁽⁴⁾ (326) |
| VALVE SIZE inch (mm) | E | G | | | | H | | | | J | | | | MAX PRESSURE psi (bar) | |
| | | MA | MG | PM | EL | MA | MG | PM | EL | MA | MG | PM | EL | | |
| 2 (50) | 2-1/16 (52) | 12-1/2 (318) | (3) | 12-1/2 ⁽⁴⁾ (318) | 18-1/8 ⁽⁴⁾ (460) | 10-9/16 (269) | (3) | 12-11/16 ⁽⁴⁾ (322) | 22-3/8 ⁽⁴⁾ (569) | 7-7/8 (200) | (3) | 4-1/2 ⁽⁴⁾ (114) | 13-3/16 ⁽⁴⁾ (335) | 150 (10) | |
| 3 (80) | 3-1/8 (79) | 14-3/8 (365) | (3) | 14-3/8 ⁽⁴⁾ (365) | 18-15/16 ⁽⁴⁾ (481) | 14-1/8 (359) | (3) | 16-3/4 ⁽⁴⁾ (425) | 20-1/8 ⁽⁴⁾ (511) | 12 (305) | (3) | 6-1/2 ⁽⁴⁾ (165) | 13-9/16 ⁽⁴⁾ (345) | 150 (10) | |
| 4 (100) | 4-1/8 (104) | 17-1/2 (445) | (3) | 17-1/2 ⁽⁴⁾ (445) | 20-3/8 ⁽⁴⁾ (518) | 15-11/16 (398) | (3) | 18-1/2 ⁽⁴⁾ (471) | 21-5/8 ⁽⁴⁾ (549) | 12 (305) | (3) | 7-1/2 ⁽⁴⁾ (191) | 13-9/16 ⁽⁴⁾ (345) | 150 (10) | |
| 6 (150) | 6-1/8 (155) | 21-3/4 (552) | 21-3/4 (552) | 21-3/4 ⁽⁴⁾ (552) | 25-7/8 ⁽⁴⁾ (658) | 21-3/8 (543) | 28 (711) | 23-7/16 ⁽⁴⁾ (595) | 27-1/2 ⁽⁴⁾ (699) | 22 (559) | 11-13/16 (300) | 8-1/2 ⁽⁴⁾ (216) | 16-11/16 ⁽⁴⁾ (424) | 150 ⁽¹⁾ (10) | |
| 8 (200) | 8 (203) | 25-7/16 (315) | 25-1/16 (637) | 25-1/16 ⁽⁴⁾ (637) | 27-1/2 ⁽⁴⁾ (698) | 24-5/8 (626) | 31-7/8 (810) | 28-1/4 ⁽⁴⁾ (718) | 29-7/16 ⁽⁴⁾ (748) | 22 (559) | 11-13/16 (300) | 10-5/8 ⁽⁴⁾ (270) | 16-11/16 ⁽⁴⁾ (424) | 150 ⁽¹⁾ (10) | |
| 10 (250) | 10 (254) | (2) | 30-5/8 (778) | 30-5/8 ⁽⁴⁾ (778) | 30-5/8 ⁽⁴⁾ (778) | (2) | 33-7/8 (861) | 32-9/16 ⁽⁴⁾ (828) | 35-3/16 ⁽⁴⁾ (893) | (2) | 11-13/16 (300) | 12-3/4 ⁽⁴⁾ (324) | 16-11/16 ⁽⁴⁾ (424) | 100 (7) | |
| 12 (300) | 12 (305) | (2) | 36 (914) | 36 ⁽⁴⁾ (914) | 36 ⁽⁴⁾ (914) | (2) | 41-3/16 (1046) | 38-1/4 ⁽⁴⁾ (972) | 37-3/4 ⁽⁴⁾ (960) | (2) | 11-13/16 (300) | 14-3/4 ⁽⁴⁾ (375) | 16-11/16 ⁽⁴⁾ (424) | 100 (7) | |

NOTE: All dimensions are shown for reference only. Detailed dimension drawings are available upon request. Contact your distributor for more details.

- (1) Maximum working pressure is limited. Contact your distributor for more details.
- (2) For these sizes, the gearbox is recommended. Versions with a direct mounted wheel are available on request.
- (3) For these sizes, the gearbox is not recommended. Versions with gearbox are available on request.
- (4) These dimensions vary depending on the actuator selection. Contact your distributor for more details.

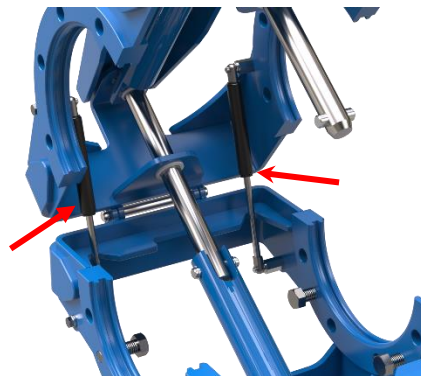
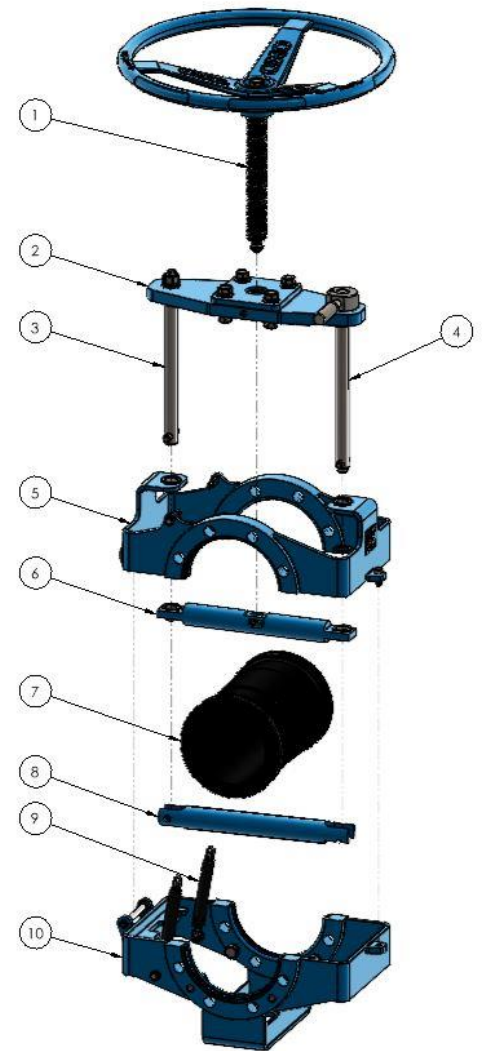


OXO VALVE inc.

530, rue des Actionnaires, Chicoutimi, Canada QC, G7J 5A9
 T : 418-437-3737 • F : 418-437-1530 • E-mail: info@oxovalve.com • Web: www.oxovalve.com

Exploded View

| # ITEM | DESCRIPTION |
|--------|-------------------------|
| 1 | ACTUATOR |
| 2 | CROSSPIECE |
| 3 | FIXED GUIDE ROD |
| 4 | OPENING HANDLE ASSEMBLY |
| 5 | UPPER BODY |
| 6 | UPPER COMPRESSION BAR |
| 7 | SLEEVE |
| 8 | LOWER COMPRESSION BAR |
| 9 | GAS SPRING |
| 10 | LOWER BODY |



ITEM #9 – GAS SPRING

ADVANTAGES:

- ❖ Provides good visibility of the sleeve and valve closure system.
- ❖ Fully tight closed system with no flow restrictions.
- ❖ Both compression bars close simultaneously.
- ❖ Extremely safe valves requiring no adjustments.
- ❖ Full-bore sleeve design.
- ❖ Maintenance performed directly on the piping system.
- ❖ Robust and efficient design.

