

# DEPARTMENTS

## DEPARTMENT (A)

### ORIGINAL ART

Coordinators: Jean Blick, Jackie Sneed,  
Susanne Pitt and Karen Sweatt

#### YOU MUST HAVE AN EXHIBITOR NUMBER TO ENTER

1. Entries must be made from 2:00-5:00 PM Sunday, August 18, and must be picked up between 2:00-4:00 pm Sunday, August 25.
2. Open only to residents of Robertson County regardless of training, talent or experience.
3. Entries must have been made by person entering.
4. Must be first time entry has been exhibited in the Robertson County Fair.
5. Entry must have been completed in the last 2 years.
6. No more than 1 entry per lot.
7. All entries must be ready to hang without glue or tape.
8. The committee reserves the right to refuse to hang any picture considered unsuitable for the exhibit.
9. All art must be completely dry before it can be entered.

#### CLASS I - Adult over 18

Prizes: 1st - \$5, 2nd - \$3, 3rd - \$2

- Lot 1 Oil Painting
- Lot 2 Water Color
- Lot 3 Pastel
- Lot 4 Drawing (charcoal or pencil)
- Lot 5 Drawing (pen or ink)
- Lot 6 Portraits
- Lot 7 Acrylic
- Lot 8 Sculpture

#### CLASS II - Youth 13-18

Prizes: 1st - \$5, 2nd - \$3, 3rd \$2

- Lot 9 Oil Painting
- Lot 10 Water Color
- Lot 11 Pastel
- Lot 12 Drawing (charcoal or pencil)
- Lot 13 Drawing (ink)
- Lot 14 Acrylic
- Lot 15 Color Pencil

#### CLASS III - Children 8-12

Prizes: 1st - \$5, 2nd - \$3, 3rd -\$2

- Lot 16 Oil Painting
- Lot 17 Water Color
- Lot 18 Drawing (charcoal or pencil)

Lot 19 Drawing (pen, ink, or felt tip pen)

Lot 20 Acrylic

Lot 21 Pastel or Crayon

Lot 22 Color Pencil

#### CLASS IV - Children 7 and Under

Prizes: 1st - \$5, 2nd - \$3, 3rd -\$2

Participation Ribbons for all others

- Lot 23 Acrylic Painting
- Lot 24 Water Color
- Lot 25 Pastel or Crayon
- Lot 26 Drawing (charcoal or pencil)
- Lot 27 Drawing (pen or ink)
- Lot 28 Felt Tip Pen

## DEPARTMENT (B)

### BAKING

Coordinator: Lynda Ellis

1. Products must be entered from 1:00 - 2:00 P.M., Tuesday, August 20, 2019.
2. Entries will be judged from 2:00-3:00 P.M.
3. All products must be picked up by 3:30 P.M.
4. Open only to residents of Robertson County.
5. Products must have been baked by person making entry.
6. Entries in Classes II & III should be placed in Ziplock bags on paper plates.
7. If coolers available, one slice, entry piece, or other appropriate portion will be displayed on 1st, 2nd, and 3rd place as long as space is available.

#### CLASS I - Bread

Prizes: 1st - \$5, 2nd - \$3, 3rd - \$2

- Lot 1 Biscuits (3)
- Lot 2 Cornbreads (any form - 3 pieces)
- Lot 3 Yeast bread
- Lot 4 Sour Dough
- Lot 5 Fruit/Nut bread (any form)
- Lot 6 Banana Bread
- Lot 7 Other breads

#### CLASS II - Cookies

Prizes: 1st - \$5, 2nd - \$3, 3rd - \$2

- Lot 8 Cookies, rolled (3)
- Lot 9 Cookies, dropped (3)
- Lot 10 Cookies, bars (3)
- Lot 11 Cookies, plain (3)
- Lot 12 Cookies, iced (3)
- Lot 13 Brownies

#### CLASS III - Candy

Prizes: 1st - \$5, 2nd - \$3, 3rd - \$2

- Lot 14 Chocolate candy, 3 pieces
- Lot 15 Candy, 3 pieces, soft
- Lot 16 Candy, 3 pieces, fancy
- Lot 17 Candy, 3 pieces, fudge, other kind

#### CLASS IV - Pies

Prizes: 1st - \$5, 2nd - \$3, 3rd - \$2

- Lot 18 Fruit Pie
- Lot 19 Chess Pie
- Lot 20 Chocolate Chess
- Lot 21 Pecan Pie
- Lot 22 Other Pie (NO meringue or topping)
- Lot 23 Any Pie with meringue
- Lot 24 Fried Pie

#### CLASS V - Cakes

Prizes: 1st - \$5, 2nd - \$3, 3rd - \$2

- Lot 25 ½ Cake (iced)
- Lot 26 ½ Cake (uniced)
- Lot 27 ½ Angel Food Cake
- Lot 28 Decorated Cake (entire cake: cake & decorations will be judged)
- Lot 29 Decorated Cupcake
- Lot 30 Pound Cake

## DEPARTMENT (C)

### CANNING

Ann Mason, Patty Evilcizer, Larry Evilcizer,  
and Diana Hodges- Coordinators.

#### YOU MUST HAVE AN EXHIBITOR NUMBER TO ENTER



# DEPARTMENTS

## Rules:

1. Entries must be made from 2:00-5:00 PM Sunday, August 18, and must be picked up from 2:00 to 4:00 pm, Sunday afternoon August 25.
2. Open only to residents of Robertson County
3. Entries must have been canned by person entering.
4. Must be first time entry has been exhibited in the Robertson County Fair.
5. Entry must have been canned within the last year.
6. Use standard, clear canning jars and standard lids. Use quarts, pints, or ½ pints unless otherwise stated. **No** decorative canning, mayonnaise or other jars.
7. Jars should be properly sealed with lids; sealing with paraffin wax no longer recommended by USDA and not acceptable for entries.

## CLASS I-Canning

Prizes: 1st - \$5, 2nd - \$3, 3rd - \$2

- Lot 1 Green Beans
- Lot 2 Misc. Vegetables
- Lot 3 Tomatoes
- Lot 4 Misc. Fruit Butter
- Lot 5 Misc. Fruit
- Lot 6 Tomato Juice
- Lot 7 Misc. Juice
- Lot 8 Sour Pickles (dill)
- Lot 9 Sweet Pickles
- Lot 10 Bread & Butter Pickles
- Lot 11 Pickles
- Lot 12 Cucumber Relish
- Lot 13 Tomato Relish
- Lot 14 Misc. Relish
- Lot 15 Salsa
- Lot 16 Chili Sauce/Spaghetti Sauce/Ketchup
- Lot 17 Strawberry Jam
- Lot 18 Blackberry Jam
- Lot 19 Misc. Jam and Marmalades
- Lot 20 Strawberry Preserves
- Lot 21 Peach Preserves
- Lot 22 Misc. Preserves
- Lot 23 Grape Jelly
- Lot 24 Blackberry Jelly
- Lot 25 Misc. Jelly
- Lot 26 Miscellaneous canned product  
(not included in Lots 1-25)

## DEPARTMENT (D)

## FARM PRODUCTS & JUNIOR FARM PRODUCTS

Coordinator: Elliott Jackson

YOU MUST HAVE AN EXHIBITOR NUMBER TO ENTER

1. Entries must be entered between 2:00 and 5:00 p.m. Sunday, August 18, and remain on display until Sunday, August 25.
2. All entries must be grown by the exhibitor.
3. All judging will be done Monday.
4. Entries are limited to one entry per person per lot.

## CLASS I - Open Competition

Prizes: 1st - \$5, 2nd - \$3, 3rd - \$2

- Lot 1 White Hybrid Corn, 10 ears
- Lot 2 Yellow Hybrid Corn, 10 ears
- Lot 3 (1) Gallon Wheat
- Lot 4 Soybeans, 3 stalks (most prolific)
- Lot 5 Soybeans 3 stalks, Dried
- Lot 6 Soybeans, 3 stalks, Green
- Lot 7 (1) Gallon Fescue Seed
- Lot 8 (3) Blocks Alfalfa Hay
- Lot 9 (3) Blocks Red Clover Hay
- Lot 10 (3) Blocks Oat Hay
- Lot 11 (3) Blocks Lespedeza Hay
- Lot 12 (3) Blocks Mixed Hay (Legumes, Grasses)
- Lot 13 (3) Blocks Grass Hay
- Lot 14 Watermelon
- Lot 15 Field Pumpkin
- Lot 16 Sweet Potatoes, 1 doz.
- Lot 17 Irish Potatoes, Red, 1 doz.
- Lot 18 Irish Potatoes, White, 1 doz.

## JUNIOR FARM PRODUCTS

Coordinator: Elliott Jackson

YOU MUST HAVE AN EXHIBITOR NUMBER TO ENTER

1. Products must be entered from 2:00-5:00 pm, Sunday August 18, and remain on display until Sunday afternoon, August 25.
2. Entries are limited to one entry per person per lot.
3. Judging will be done Monday.
4. Open to youth of Robertson County.

Prizes: 1st-\$5 2nd-\$3 3rd-\$2

## CLASS II

- Lot 19 White Hybrid Corn, 10 ears
- Lot 20 Yellow Hybrid Corn, 10 ears
- Lot 21 Watermelon
- Lot 22 Pumpkin - Jack-O-Lantern
- Lot 23 Pumpkin - Giant
- Lot 24 Sweet Potatoes (1 doz.)
- Lot 25 Irish Potatoes (1 doz.)
- Lot 26 Soy Beans, 3 stalks most prolific
- Lot 27 Hay, Legume
- Lot 28 Hay, Grass
- Lot 29 Mixed Hay

## DEPARTMENT (D-1) HONEY

Barry Richards, Mark Hayden  
Coordinators.

YOU MUST HAVE AN EXHIBITOR NUMBER TO ENTER

1. Entries may be made from 2:00-5:00PM Sunday, August 18, and must be picked up from 2:00 to 4:00 pm Sunday afternoon August 25.
2. Honey should be submitted in standard 1 lb. honey jars.
3. All jars must be unlabeled.
4. All honey and beeswax must be produced by the exhibitor.
5. Frames of honey may be submitted in display cases or plastic wrap.
6. Exhibitors may enter only one entry per lot.
7. Members of Robertson County Bee Club may enter.

## CLASS I

Prizes: 1st - \$5, 2nd - \$3, 3rd - \$2

- Lot 1 Extracted Honey - Light
- Lot 2 Extracted Honey - Dark
- Lot 3 Honey with Comb - Light
- Lot 4 Honey with Comb - Dark
- Lot 5 Frame of Honey (wired or unwired)
- Lot 6 Product made of beeswax
- Lot 7 Best of Show Lot 1 - 6

## DEPARTMENT (E) FLOWER SHOW

Coordinators: Christine Stark, Julie Orr,  
Mary Solomon, Glen Solomon, Marcia  
Lyons, Jane Wilkerson, Tommy Lyons.

# DEPARTMENTS

YOU MUST HAVE AN EXHIBITOR NUMBER TO ENTER

## READ INSTRUCTIONS CAREFULLY

1. Entries will be entered Monday, August 19, between 8:00-10:00 A. M. Judging will begin at 10:00 a.m.
2. Specimens must have been grown by exhibitor, and prefer exhibitor to enter own exhibit.
3. Arrangements must have been arranged by exhibitor. (Primary flowers used in arrangements must have been grown by exhibitor).
4. Open only to residents of Robertson County.
5. All specimens must be in clear plastic disposable bottles (no labels) and water (no soil).
6. Arrangements should be in oasis, (no soil).
7. Accessories may be used with any arrangement.
8. NO ARTIFICIAL FLOWERS.
9. Exhibitor may make only 1 entry per lot.
10. All entries must remain till Sunday afternoon, August 25.
11. All live plants must be carried by exhibitor, workers not available to lift large pots.

## CLASS I - Arrangements

Prizes: 1st - \$5, 2nd - \$3, 3rd - \$2

- Lot 1 Miniature under 3 inches in any direction, includes container
- Lot 2 Small arrangement 3 - 6 inches, includes container
- Lot 3 Zinnias
- Lot 4 Marigolds
- Lot 5 Chrysanthemum
- Lot 6 Dahlias
- Lot 7 Rose
- Lot 8 Arrangement featuring only one rose
- Lot 9 Arrangement in favorite container featuring roses
- Lot 10 Mixed Arrangements
- Lot 11 Wildflower
- Lot 12 Holiday Arrangement
- Lot 13 Arrangement using a medium size household article as container, 6" to 12" tall.
- Lot 14 Arrangements using a larger size household article as container, 13"to 18" tall.
- Lot 15 Best of Lots 3-14

## CLASS II - Specimens -1 Stalk, 1 Blossom and Foliage (not multiples)

Prizes: 1st -\$5, 2nd - \$3, 3rd -\$2

- Lot 16 Hybrid Tea, Red
- Lot 17 Hybrid Tea, Yellow
- Lot 18 Hybrid Tea, Pink
- Lot 19 Hybrid Tea, Salmon
- Lot 20 Hybrid Tea, White
- Lot 21 Floribunda
- Lot 22 Knockout Rose
- Lot 23 Mini Rose
- Lot 24 Zinnia, Small
- Lot 25 Zinnia, Large
- Lot 26 Marigold, Small
- Lot 27 Marigold, Large
- Lot 28 Spike of Plume Celosia
- Lot 29 Spike of Comb Celosia
- Lot 30 Spike of Spiked Celosia
- Lot 31 Dahlias
- Lot 32 Chrysanthemum



- Lot 33 Sunflower
- Lot 34 Other Specimen, not listed

## CLASS III - Horticulture

Prizes: 1st - \$5, 2nd - \$3, 3rd \$2

- Lot 34 Geranium
- Lot 35 Herbs (must be in one container)
- Lot 36 Begonia
- Lot 37 Cacti
- Lot 38 Succulent
- Lot 39 African Violets
- Lot 40 Hanging Baskets, Flowering
- Lot 41 Hanging Baskets, Non-Flowering
- Lot 42 All Green Plant, Flowering
- Lot 43 All Green Plant, Non-Flowering
- Lot 44 Potted Plant-3 or more varieties
- Lot 45 Potted Plant in Bloom-3 or more varieties
- Lot 46 Potted Plant, (one) non-flowering, 12" pots only or you will not be judged
- Lot 47 Terrarium

## DEPARTMENT (F) GARDEN PRODUCTS

Cathy Corbin, Wanda Cohea, John Cohea  
Coordinators

YOU MUST HAVE AN EXHIBITOR NUMBER TO ENTER

1. Products must be entered between 2:00 and 5:00PM Sunday, August 18, and remain on display until Sunday afternoon, August 25.
2. Garden entries are limited to one entry per person, per lot.
3. Judging will be done Monday.
4. No exhibits from 4-H, FCCLA & FFA or youth members will be accepted.
5. Entries must be grown by exhibitor.

## CLASS I-Open Competition

Prizes: 1st-\$5, 2nd-\$3, 3rd-\$2, 4th-\$1

- Lot 1 Red Tomatoes (four on paper plate)
- Lot 2 Pink Tomatoes (four on paper plate)
- Lot 3 Cherry Tomatoes (cluster)
- Lot 4 Tomatoes, other (four on paper plate)
- Lot 5 Cucumbers (three on paper plate)
- Lot 6 Carrots (six)
- Lot 7 White Squash (three)
- Lot 8 Yellow Squash, Crookneck (three)
- Lot 9 Yellow Squash, Straight (three)
- Lot 10 Butternut Squash (three)
- Lot 11 Zucchini (three)
- Lot 12 Cushaws (one)
- Lot 13 Green Beans, Bush (1 dozen)
- Lot 14 Green Beans, Pole (1 dozen)
- Lot 15 October Beans (1 dozen)
- Lot 16 Peas, Field (1 dozen)
- Lot 17 Black eyed peas
- Lot 18 Cabbage (1 head)
- Lot 19 Beets without tops (six)
- Lot 20 Eggplant (one)
- Lot 21 Okra (6)
- Lot 22 Butter Beans (2 dozen in hull)
- Lot 23 Cantaloupe, any variety
- Lot 24 Other Vegetable (edible)
- Lot 25 Peppers, Sweet (four)
- Lot 26 Pepper, String Red (20 pods)
- Lot 27 Pepper String Green (20 pods)
- Lot 28 Pepper, Banana (six)
- Lot 29 Hot Pepper (six)
- Lot 30 Dried Peas (1 qt. jar)
- Lot 31 Fordhook Butterbeans (1 dozen in hull)
- Lot 32 Vegetable Collection
- Lot 33 Herb Collection
- Lot 34 Sweet Corn (six ears)
- Lot 35 Onions

## DEPARTMENT (F) JUNIOR GARDEN PRODUCTS

Diane Pearson, Wyatt Pearson, Jessica Worsham, Teri Duncan, Lisa Melton  
Coordinators

# DEPARTMENTS

YOU MUST HAVE AN EXHIBITOR NUMBER TO ENTER

1. Products must be entered between 2:00-5:00 PM. Sunday, August 18, and remain on display until Sunday afternoon, August 25.
2. All entries must be grown by exhibitor.
3. All judging will be done Monday.
4. Class is open to youth of Robertson County.
5. One entry per exhibitor per lot.

## CLASS II -

Prizes: 1st - \$5 2nd - \$3 3rd - \$2 4th - \$1

- Lot 1 Red Tomatoes (four on paper plate)
- Lot 2 Pink Tomatoes (four on paper plate)
- Lot 3 Cherry Tomatoes (cluster)
- Lot 4 Tomatoes, other (four on paper plate)
- Lot 5 Cucumbers (three on paper plate)
- Lot 6 Carrots (six)
- Lot 7 White Squash (three)
- Lot 8 Yellow Squash, Crookneck (three)
- Lot 9 Yellow Squash, Straight (three)
- Lot 10 Butternut Squash (three)
- Lot 11 Zucchini (three)
- Lot 12 Cushaws (one)
- Lot 13 Green Beans, Bush (1 dozen)
- Lot 14 Green Beans, Pole (1 dozen)
- Lot 15 October Beans (1 dozen)
- Lot 16 Peas, Field (1 dozen)
- Lot 17 Blackeyed peas
- Lot 18 Cabbage (1 head)
- Lot 19 Beets without tops (six)
- Lot 20 Eggplant (one)
- Lot 21 Okra (six)
- Lot 22 Butter Beans, Lima (2 dozen in hull)
- Lot 23 Cantaloupe, any variety
- Lot 24 Other Vegetable (edible)
- Lot 25 Peppers, Sweet (four)
- Lot 26 Pepper, String Red (20 pods)
- Lot 27 Pepper, String Green (20 pods)
- Lot 28 Pepper, Banana (4)
- Lot 29 Pepper, Hot (4)
- Lot 30 Dried Peas (1 qt. jar)
- Lot 31 Fordhook Butterbeans (1 dozen in hull)
- Lot 32 Vegetable Collection
- Lot 33 Herb Collection
- Lot 34 Sweet Corn (six ears)
- Lot 35 Onions

## DEPARTMENT (G) NEEDLEWORK

Melissa Pettus, Debbie Askew, Laura Jones, Erin Drake Coordinators

YOU MUST HAVE AN EXHIBITOR NUMBER TO ENTER

1. Entries must be made from 2:00 to 5:00 p.m. Sunday, August 18, and must be picked up from 2:00 to 4:00 p.m. Sunday, August 25.
2. Open only to residents of Robertson County.
3. Entries must have been made by person entering.
4. Must be the first time entry has been exhibited in the Robertson County Fair.
5. Entries must have been completed within the last 2 years.
6. Entries limited to 1 per lot.

## CLASS I

Prizes: 1st-\$5, 2nd-\$3, 3rd-\$2

- Lot 1 Pillowcase, Misc.
- Lot 2 Tablecloth (Fabric)
- Lot 3 Table Placemats & Runners
- Lot 4 Crewel Embroidery, specimen
- Lot 5 Hand Embroidery, specimen
- Lot 6 Needlepoint, specimen (not plastic canvas)
- Lot 7 Quickpoint (plastic canvas)
- Lot 8 Knitted, specimen
- Lot 9 Knit & Crochet Mix
- Lot 10 Cross-stitch, not counted (framed or finished)
- Lot 11 Counted Cross-stitch, specimen under 5" (framed or finished)
- Lot 12 Counted Cross-stitch, 14 count (framed or finished)
- Lot 13 Counted Cross-stitch, 18 count (framed or finished)
- Lot 14 Applique, Misc.
- Lot 15 Counted Cross-stitch, on linen
- Lot 16 Cross-stitch, pillows
- Lot 17 Misc. Cross-Stitch, Not Listed
- Lot 18 Crochet, specimen
- Lot 19 Crochet Novelty, specimen
- Lot 20 Crochet, wearable
- Lot 21 Swedish Weaving, specimen
- Lot 22 Hand-decorated garment
- Lot 23 Machine-decorated garment
- Lot 24 Machine embroidery
- Lot 25 Machine knitting
- Lot 26 Baby garment
- Lot 27 Tatting
- Lot 28 Crochet, Knitted, or Quilted Handbags
- Lot 29 Crocheted Table Cloth
- Lot 30 Misc. (any items not listed)

## Class II

Prizes: 1st-\$5, 2nd-\$3, 3rd-\$2

- Lot 31 Afghan, crocheted
- Lot 32 Afghan, misc.
- Lot 33 Afghan, Baby (thread)
- Lot 34 Quilt, pieced & hand quilted
- Lot 35 Quilt, pieced & machine quilted
- Lot 36 Quilt, applique
- Lot 37 Quilt, misc.
- Lot 38 Quilt, Baby
- Lot 39 Stole or other wrap
- Lot 40 Rugs
- Lot 41 Decorated pillow, pieced, patchwork, appliqued
- Lot 42 Decorated pillow, crocheted
- Lot 43 Decorated pillow, quilted
- Lot 44 Decorated pillow, misc.
- Lot 45 Decorated towels
- Lot 46 Wallhanging (misc.)
- Lot 47 Teen's Division ages 13-19 (any lot)
- Lot 48 Children's Division thru age 12 (any lot)

## DEPARTMENT (H) HOLIDAY DÉCOR

Marie Gregory, Ruth Hart, Faye Jones, Coordinators

1. Entries must be made from 2:00 to 5:00 p.m., Sunday, August 18, and must be picked up from 2:00 to 4:00 p.m., Sunday afternoon, August 25.
2. Open only to residents of Robertson County.
3. Entries must have been made by person entering.
4. Must be first time entry has been exhibited in the Robertson County Fair.
5. Entries must have been completed within the last year.
6. No assembly will be allowed in booth.
7. Entries limited to 1 per person per lot.

## CLASS I

Prizes: 1st - \$5, 2nd - \$3, 3rd - \$2

- Lot 1 Christmas Table Decoration
- Lot 2 Christmas Door Decoration
- Lot 3 Christmas Stocking, any material
- Lot 4 Christmas Card Holder
- Lot 5 Christmas Tree Decoration (3 pieces of needlework)
- Lot 6 Any Holiday Tablecloth or Tree Skirt

# DEPARTMENTS

Decoration (3 pieces not needlework)  
Lot 7 Any Holiday Hanging Needlework Decoration  
Lot 8 Holiday Hanging Decoration (not Needlework)  
Lot 9 Decorated Packages  
Lot 10 Mantel Decoration  
Lot 11 Halloween Decoration  
Lot 12 Thanksgiving Decoration  
Lot 13 Any Other Holiday Decoration not listed  
Lot 14 Easter Decoration  
Lot 15 Valentine's Decoration  
Lot 16 Any Holiday Tablecloth  
Lot 17 Any Holiday placemats, or table runner  
Lot 18 Three gift tags, any holiday, any medium

## DEPARTMENT (I) ORCHARD PRODUCTS & MISCELLANEOUS

**Mary Jane Bruce, Wanda Warren, Mike Mason, Crockett Bruce, Lauren Bruce**  
Coordinators

1. Products must be entered from 2:00 to 5:00 p.m., Sunday August 18, and remain on display until Sunday afternoon, August 25.
2. No exhibitors will be allowed in the department until all judging is completed and ribbons and signs placed.
3. All entries must be from current growing season.

### CLASS I

Prizes: 1st - \$5, 2nd - \$3, 3rd - \$2, 4th - \$1  
Lot 1 Red Apples (five on sturdy disposable plate)  
Lot 2 Green Apples (five on sturdy disposable plate)  
Lot 3 Yellow Apples (five on sturdy disposable plate)  
Lot 4 Pears (five on sturdy disposable plate)  
Lot 5 Dried Apples (quart jar) non-labeled standard  
Lot 6 Dried Peaches (quart jar) non-labeled standard  
Lot 7 Tray of Wild Fruit & Nuts/edible (include list of contents)  
Lot 8 Eggs, Chicken (one dozen in carton) with lid  
Lot 9 Homemade Soap (3 bars only) on paper

plate  
Lot 10 Popcorn (5 ears) on paper plate  
Lot 11 Peanuts (three plants with nuts)  
Lot 12 Gourds, Large (one)  
Lot 13 Gourds, Medium (one)  
Lot 14 Gourds, Small (one)  
Lot 15 Gourds, Ornamental (one)  
Lot 16 Display, small gourds in basket (no more than 10)  
Lot 17 Turnips, without tops (five) on paper plate  
Lot 18 Miniature Pumpkin (one) not more than 5 inches tall, not including stem  
Lot 19 "Jack-be-Little" type (one)  
Lot 20 Sunflowers (one non-ornamental; Stalk no more than 6 inches)  
Lot 21 Grapes

## DEPARTMENT (J) PHOTOGRAPHY

**Coordinators: Marissa Brown, Abigail Tewmey**

1. Entries must be made from 2:00 to 5:00 p.m. Sunday, August 18, and must be picked up from 2:00 to 4:00 p.m., Sunday afternoon, August 25.
2. Open only to residents of Robertson County.
3. Entries must have been made by person entering.
4. Must be the first time entry has been exhibited in the Robertson County Fair.
5. Photographs must have been taken within the last year.
6. For the purpose of competition, amateurs have photography as a hobby and sell photos only occasionally.
7. Picture will be judged on interest, appeal, and photographic experience or technique.
8. All photographs must be 8x10.
9. All photographs must be matted or mounted on maximum 11x14 matte board, poster board or heavy construction paper. (No Glass, No Frame allowed)
10. Entries are limited to 1 print per person, per lot.
11. The committee reserves the right to refuse to hang any picture considered unsuitable for the fair exhibit or if the number of exhibits exceeds space. Multi entries by a single individual may not be

displayed.

12. All Robertson County Fair General Rules apply for entries.

### CLASS I- Black and White

Prizes: 1st-\$5, 2nd-\$3, 3rd-\$2  
Lot 1 Portraits/People (Formal and Casual) - Child  
Lot 2 Portraits/People (Formal and Casual)- Adult Male  
Lot 3 Portraits/People (Formal and Casual)- Adult Female  
Lot 4 Portraits/People (Formal and Casual)- Group 2 or more  
Lot 5 Landscape  
Lot 6 Sports/Action  
Lot 7 Still Life (set up objects, no people or animals)  
Lot 8 Animals (wildlife, insects, or pets)  
Lot 9 Architecture - no barns  
Lot 10 Barns  
Lot 11 Nature

### CLASS II-Color

Prizes: 1st-\$5, 2nd-\$3, 3rd-\$2  
Lot 12 Portraits/People (Formal and Casual)- Child  
Lot 13 Portraits/People (Formal and Casual)- Adult Male  
Lot 14 Portraits/People (Formal and Casual)- Adult Female  
Lot 15 Portraits/People (Formal and Casual)- Group 2 or more  
Lot 16 Landscape  
Lot 17 Sports/Action  
Lot 18 Still Life (set up objects, no people or animals)  
Lot 19 Animals (wildlife, insects, or pets)  
Lot 20 Architecture - no barns  
Lot 21 Barns  
Lot 22 Nature

### CLASS III-Children's Division

Prizes: 1st-\$5, 2nd-\$3, 3rd-\$2  
Lot 23 Black & White (ages 11 and under)  
Lot 24 Black & White (ages 12 to 18)  
Lot 25 Color (ages 11 and under)  
Lot 26 Color (ages 12 to 18)

## DEPARTMENT (K) CLOTHING

**Coordinators: Belinda Heard, Allana Heard, Patty Gibbs**

# DEPARTMENTS

Entries must be made from 2:00 to 5:00 p.m. Sunday, August 18, and must be picked up from 2:00 to 4:00 pm on Sunday afternoon, August 25.

1. Open only to residents of Robertson County.
2. Entries must have been made by person entering.
3. Must be first time entry has been exhibited in the Robertson County Fair.
4. Entries must have been completed within the last year.
5. Entries must be wearable clothing, NOT doll clothes.

## CLASS I-ADULT

Prizes for Lots 1-4: 1st-\$10, 2nd-\$7.50, 3rd-\$3

- Lot 1 Suit (includes pant suit)
- Lot 2 Coat
- Lot 3 Ensemble
- Lot 4 Formal Dress

Prizes for Lots 5-8: 1st-\$7.50, 2nd -\$5, 3rd - \$3

- Lot 5 Casual Dress
- Lot 6 Better Dress
- Lot 7 Sportswear
- Lot 8 Menswear

Prizes for Lots 9-13: 1st -\$5, 2nd -\$3, 3rd -\$2

- Lot 9 Skirt
- Lot 10 Shirt/Blouse
- Lot 11 Vest
- Lot 12 Apron
- Lot 13 Misc. (any garment not listed above)

## CLASS II - Teenagers

Prizes: 1st - \$5, 2nd - \$3, 3rd - \$2

- Lot 14 Sportswear
- Lot 15 Best Dress or Ensemble

## CLASS III - Children 5 - 12 years

Prizes: 1st - \$5, 2nd - \$3, 3rd - \$2

- Lot 16 Play Outfit
- Lot 17 School Outfit/Jumper
- Lot 18 Better Dress
- Lot 19 Misc (any garment not listed above)

## CLASS IV - Infant and Children 4 years and under

Prizes: 1st - \$5, 2nd - \$3, 3rd - \$2

- Lot 20 Dress outfit for girls

- Lot 21 Dress outfit for boys
- Lot 22 Pinafore or Jumper
- Lot 23 Play Outfit
- Lot 24 Suit or Coat
- Lot 25 Baby Gown
- Lot 26 One-piece Suit
- Lot 27 Smocked item, 5 years and under
- Lot 28 Misc. (any garment not listed above)

## CLASS V - All Ages

Prizes: 1st - \$5, 2nd - \$3, 3rd - \$2

- Lot 30 Recycled (one garment made into another garment or accessory)
- Lot 31 Costume – Child
- Lot 32 Costume - Adult
- Lot 33 Hand-made Purse
- Lot 34 Any Garment sewn by youth ages 17 and under

## DEPARTMENT (L)

### RELATED ARTS & CRAFTS

**Coordinators: Anne Elliot, Cathy Cotter, Marie Brown, Peggy Rowland, Debbie Wachter, Jodi Johnson, Jean Everett, Barbara White**

**YOU MUST HAVE AN EXHIBITOR NUMBER TO ENTER**

1. Entries must be made from 2:00 to 5:00 p.m. Sunday, August 18, and must be picked up from 2:00 to 4:00pm on Sunday afternoon, August 25.
2. Open only to residents of Robertson County.
3. Entries must have been made by person entering, and limited to one entry per lot.
4. Must be first time entry has been exhibited in the Robertson County Fair.
5. Entries must have been completed within the last year.
6. Any item deemed not suitable will not be judged.
7. Misc. any item not listed in this and other departments or lots.

## CLASS I

Prizes: 1st - \$5, 2nd - \$3, 3rd - \$2

- Lot 1 Leather Crafts
- Lot 2 Handmade Wood Crafts
- Lot 3 Decorated Wood Crafts (wood item does not have to be handmade)

- Lot 4 Wreath
- Lot 5 Painted item (age 17 or under)
- Lot 6 Painted item (age 18 and over)
- Lot 7 Handmade Picture - not needlework (age 17 or under)
- Lot 8 Handmade Picture - not needlework (age 18 and over)
- Lot 9 Handmade Bag (age 17 or under)
- Lot 10 Handmade Bag (age 18 and over)
- Lot 11 Handmade Toy or Doll (age 17 or under)
- Lot 12 Handmade Toy or Doll (age 18 and under)
- Lot 13 Model misc. - Lego; ages 10 and under (Limit 12"x12")
- Lot 14 Model misc. - Lego; age 11 and up (Limit 12"x12")
- Lot 15 Decorated Box - not holiday
- Lot 16 Stenciled or stamped Item (not Postage Stamp)
- Lot 17 Stamping Cards
- Lot 18 Stamping Photo or Journal Book
- Lot 19 Wall Hangings (fabric)
- Lot 20 Wall Hangings (other than fabric)
- Lot 21 Scrapbook Pages (2 to 4)
- Lot 22 Handmade Basket - over 10 inches in any direction
- Lot 23 Handmade Basket - 10 inches or less in any direction
- Lot 24 Handmade Basket - All sizes - age 17 and under
- Lot 25 Decorated or painted Tile
- Lot 26 Decorated Stepping Stone
- Lot 27 Beadwork (not Jewelry)
- Lot 28 Jewelry - Bracelet
- Lot 29 Jewelry - Earrings
- Lot 30 Jewelry - Necklace
- Lot 31 Jewelry - Pin
- Lot 32 Ceramics, age over 18
- Lot 33 Flower Arrangement - Artificial
- Lot 34 Ceramics, age 17 and under
- Lot 35 Misc. (any item not listed) age over 65
- Lot 36 Misc. (any item not listed) age 19 - 64
- Lot 37 Misc. (any item not listed) age 13 - 18
- Lot 38 Misc. (any item not listed) ages 6-12
- Lot 39 Misc. (any item not listed) age under 6

## DEPARTMENT (M)

### TOBACCO & JUNIOR TOBACCO

**Wesley Jones, Tyler Chowning**  
**Coordinators**

1. Entries must be CURED TOBACCO.
2. The tobacco entry will consist of one

# DEPARTMENTS

stick of 5 stalks.

- Individuals are limited to one entry per lot.
- All tobacco must be entered between 2:00 and 5:00 p.m., Sunday, August 18th.

## CLASS-I Open Division

Prizes: 1st \$15, 2nd \$13, 3rd \$10, 4th \$7, 5th \$6, 6th \$5, 7th \$4

- Lot 1 Stick of Dark Fired Tobacco
- Lot 2 Stick of One Sucker Tobacco
- Lot 3 Stick of Burley Tobacco

## CLASS II Junior Tobacco

Prizes: 1st \$15, 2nd \$13, 3rd \$10, 4th \$7, 5th \$6, 6th \$5, 7th \$4

- Products must be entered no later than 5:00 p.m., Sunday, August 18, and remain on display until Sunday afternoon, August 25.
- Judging to be done Monday.
- Open only to 4-H and FFA members of Robertson County.

- Lot 1 Stick of Dark Fired Tobacco
- Lot 2 Stick of One Sucker Tobacco
- Lot 3 Stick of Burley Tobacco

## CLASS III

Prize: 1st \$15

- Lot 1 Champion Dark Stick (Classes I & II)
- Lot 2 Champion Burley Stick (Classes I & II)
- Lot 3 Champion One Sucker Stick (Classes I & II)
- Lot 4 Best Cured Stick Dark Tobacco (Classes I & II)



## DEPARTMENT (N)

### 4-H BAKING

Kim Bibb, Stephanie Coutts-Bradley

## Coordinators.

YOU MUST HAVE AN EXHIBITOR NUMBER TO ENTER

- Open only to Robertson County 4-H members who were enrolled on January 1 of the current calendar year.
- Products must be entered between 2:00 and 5:00 p.m., Sunday, August 18, and may be picked up on Tuesday, August 20, after 5:00 p.m. – BUT winner cards and ribbons must remain on display.
- Entries will be judged and winners will be posted on Monday evening.
- Only one entry per member per lot. Products must be baked by person entering.
- Entries should be on disposable plate inside zip-loc bag, no foil or plastic wrap.

## CLASS I - BREAD

Prizes: 1st \$7, 2nd \$5, 3rd \$3

- Lot 1 Biscuits (3 or 4)
- Lot 2 Cornbread (3 or 4 pieces)
- Lot 3 Quick Loaf (1/2 loaf)
- Lot 4 Yeast Bread (3 or 4 pieces)
- Lot 5 Muffins (3 or 4, any flavor)
- Lot 6 Any bread listed above (Lots 1-5), Clover Buds Only (K-3)

## CLASS II- COOKIES

Prizes: 1st \$7, 2nd \$5, 3rd \$3

- Lot 7 Brownies (3 or 4 pieces)
- Lot 8 Dropped Cookies, ages 12 & under (3 or 4)
- Lot 9 Dropped Cookies, ages 13-18 (3 or 4)
- Lot 10 Bar Cookies (3 or 4)
- Lot 11 Miscellaneous Cookies (3 or 4)

## CLASS III-PIES

Prizes: 1st \$7, 2nd \$5, 3rd \$3

- Lot 12 Pecan/Nut Pie (whole pie)
- Lot 13 Any Other Pie (whole pie)
- Lot 14 Chess Pie/Chocolate Chess Pie (whole pie)

## CLASS IV -CAKES

Prizes: 1st \$7, 2nd \$5, 3rd \$3

- Lot 15 Cupcakes (3 or 4), any icing
- Lot 16 1/4 Other Cake, any icing or glaze
- Lot 17 1/4 Other Cake, uniced or unglazed
- Lot 18 Decorated Cake

## CLASS V -MISCELLANEOUS

Prizes: 1st \$7, 2nd \$5, 3rd \$3

- Lot 19 Chocolate Fudge (3 or 4 pieces)

Lot 20 Miscellaneous Candy (3 or 4 pieces)

Lot 21 Homemade Trail Mix (2 cups)

Lot 22 Home Dried Fruit (2 cups)

## DEPARTMENT (O)

### 4-H CANNING

Hunter Mantooh, Brittney Baggett,  
Coordinators

YOU MUST HAVE AN EXHIBITOR NUMBER TO ENTER

- Open only to Robertson County 4-H members who were enrolled on January 1 of the current calendar year.
- Products must be entered between 2:00 and 5:00 p.m., Sunday, August 18, and remain on display until Sunday afternoon, August 25. Entries should be picked up Sunday, August 25 between 2:00-4:00p.m.
- All products must have been canned within the last 12 months. Use standard canning jars and lids; qts., pts., or ½ pts may be used unless otherwise stated.
- Jars should be clean of dust and other debris. Please clean jars.
- In lots where more than one entry may be made, entries should be different – vegetables fruits, etc.
- Year of canning must be written on lid of product.
- Please label jams, jellies, relish, misc. etc. as to kind.

## CLASS-I

Prizes: 1st - \$5, 2nd - \$3, 3rd - \$2

- Lot 1 Fruit
- Lot 2 Tomato Juice (limit 1 entry per member)
- Lot 3 Other Juice
- Lot 4 Green Beans (limit 1 entry per member)
- Lot 5 Tomatoes
- Lot 6 Quart Vegetables
- Lot 7 Pint Vegetables
- Lot 8 Sweet Pickles
- Lot 9 Sour or Dill Pickles
- Lot 10 Other Pickles
- Lot 11 Relish
- Lot 12 Blackberry Jam Lot 13 Any other Jam
- Lot 14 Jelly
- Lot 15 Preserves
- Lot 16 Miscellaneous (any item not listed above)
- Lot 17 Salsa
- Lot 18 Sauces

# DEPARTMENTS

## DEPARTMENT (P)

### 4-H RELATED ARTS & CRAFTS

Mary Lee Lemley, Coordinator

YOU MUST HAVE AN EXHIBITOR NUMBER TO ENTER

1. Open only to Robertson County 4-H members who were enrolled on January 1, current calendar year.
2. Articles must be entered between 2:00 and 5:00 p.m., Sunday, August 18, and remain on display until Sunday afternoon, August 25. Entries should be picked up Sunday, August 25 between 2:00-4:00 p.m.
3. Must be first time article has been exhibited in this fair.
4. Article must have been made within the last 2 years.
5. Article must have been made by person entering.
6. Only one entry per member per lot.
7. Only one premium will be paid for team exhibits (Lots 34-36).
8. The committee reserves the right to refuse to hang any picture considered unsuitable for the fair exhibit.
9. 9. Items in Lots 1-4 MUST be ready to hang.

#### CLASS I - ART AND PHOTOGRAPHY

Prizes: 1st - \$5, 2nd - \$3, 3rd - \$2

- Lot 1 Free Hand Drawing (any medium, ages 12 & under) (Entries must be ready-to-hang) Lot 2 Free Hand Drawing (any medium, ages 13-18) (Entries must be ready-to-hang)
- Lot 3 Painting (oil or acrylic) (Entries must be ready-to-hang)
- Lot 4 Water color/Chalk (Entries must be ready to hang)
- Lot 5 Photography - Buildings (1 photo, any size, mounted)
- Lot 6 Photography - Landscapes (1 photo, any size, mounted)
- Lot 7 Photography - People (1 photo, any size, mounted)
- Lot 8 Photography - Animals (1 photo, any size, mounted)
- Lot 9 Photography - Miscellaneous (1 photo, any size, mounted)
- Lot 10 Photography - Miscellaneous (limited to 4-H Clover Buds, grades K-3, mounted)

- Lot 11 Other Poster (examples: 4-H project, demo., photo story, June Dairy poster, etc.)  
Lot 12 4-H Poster (14 in. x 22 in.)

#### CLASS II - CRAFTS and COLLECTIONS

Prizes: 1st - \$5, 2nd - \$3, 3rd - \$2

- Lot 13 Wooden Article  
Lot 14 Handmade Toy (not wood)  
Lot 15 Model Toy  
Lot 16 Lego Toy  
Lot 17 Holiday Decoration  
Lot 18 Wall Plaque or Wreath  
Lot 19 Jewelry Craft  
Lot 20 Paper Craft/Foam Craft  
Lot 21 Miscellaneous Craft Item (ages 11 under)  
Lot 22 Miscellaneous Craft Item (ages 12 - 14)  
Lot 23 Miscellaneous Craft item (ages 15 - 18)  
Lot 24 Decorated T-Shirt (air brush, tie dye, fabric paint, etc.)  
Lot 25 Collection Hobby/Nature (items and method of display will be judged)  
Lot 26 Scrapbook with a theme (any size)  
Lot 27 Miscellaneous Craft from "recycled" or "reused" item  
Lot 28 Miscellaneous Craft (limited to 4-H Clover Buds, grades K-3)

#### CLASS III - PROJECT BOOKS

Prizes: 1st - \$5, 2nd - \$3, 3rd - \$2

- Lot 29 Explorer Project Book "Exploring 4-H" (4th grade as of Jan. 1 this calendar year)  
Lot 30 Junior Project Book, any project (5th & 6th grade as of Jan. 1 this calendar year)  
Lot 31 Jr. High Portfolio (7th & 8th grade as of Jan. 1 this calendar year)  
Lot 32 Sr. High Portfolio - Level I (9th-10th grade as of Jan. 1 this calendar year)  
Lot 33 Sr. High Portfolio - Level II (11th-12th grade as of Jan. 1 this calendar year)

#### CLASS IV - TABLE TOP EXHIBITS

(not science fair exhibit)

Prizes: 1st - \$10, 2nd - \$8, 3rd - \$6

- Lot 34 4-H Project Table Top Exhibit Individual or Team (2-3 members - 4th 5th or 6th grades as of Jan. 1 this calendar year) Must be related to a 4-H project (not school or science project). Must be "Free-standing" (members must furnish own card table).

- Lot 35 4-H Project Table Top Exhibit Individual or Team (2-3 members - 7th or

8th grades as of Jan. 1 this calendar year) Must be related to a 4-H project (not school or science project). Must be "Free-standing" members must furnish own card table).

Lot 36 4-H Project Table Top Exhibit, Individual or Team (2-3 members - 9th thru 12th grades as of Jan. 1 this calendar year). Must be related to a 4-H project (not school or science project). Must be "Free-standing" (members must furnish own card table).

#### CLASS V - 4-H F.A.C.E.

(Food and Cover Establishment) Wildlife Plots

Prizes: 1st - \$5, 2nd - \$3, 3rd - \$2

- Lot 37 4-H F.A.C.E. Recordbook/Scrapbook  
Lot 38 4-H F.A.C.E. Plant Samples: an entry consists of plants which were grown by the 4-H club member in his/her 4-H Wildlife Plot. Possible specimens are Pearl Millet, cowpeas, sorghum, and sunflowers. An entry should be bundled together with a rubberband or string.

## DEPARTMENT (Q)

### 4-H Needlework & Ready to Wear

Ann Proctor, Coordinator

YOU MUST HAVE AN EXHIBITOR NUMBER TO ENTER

1. Open only to Robertson County 4-H members who were enrolled on January 1, current calendar year.
2. Articles must be entered between 2:00 and 5:00 p.m., Sunday, August 18, and remain on display until Sunday afternoon August 25. Entries should be picked up Sunday, August 25, 2:00 - 4:00 p.m.
3. All articles must have been made within last 12 months.
4. All articles must have been made by person entering.
5. Must be the first time article has been exhibited in this fair.
6. Determination of Grade: Grade as of January 1 this calendar year.
7. Only 1 entry per member per lot.

#### CLASS I NEEDLEWORK

ALL GRADES AND AGES



# DEPARTMENTS

Prizes: 1st \$5, 2nd \$3, 3rd \$2

Lot 1 Counted Cross Stitch or Embroidery

Lot 2 Needlework or Plastic Canvas

Lot 3 Decorated Shirt

Lot 4 Misc. accessories made by member

Lot 5 Misc. Item (pillow, stuffed toys, etc. member sewed themselves)

Lot 6 Misc. Item (pillow, stuffed toys, etc. member sewed themselves) 4-H Cloverbuds only (K-3rd Grade, as of January 1 current year)

Lot 7 Misc. Garment (apron, doll clothes, etc.)

Lot 8 Recycled Garment or Item (Made from a "throw-away" or "used" article)

## CLASS II READY TO WEAR

GRADES 4, 5

Prizes: 1st \$5, 2nd \$3, 3rd \$2

Lot 9 Casualwear

Lot 10 Schoolwear

GRADES 6, 7, 8

Prizes: 1st \$5, 2nd \$3, 3rd \$2

Lot 11 Casualwear

Lot 12 Schoolwear

Lot 13 Bestwear

GRADES 9, 10, 11, 12

Prizes: 1st \$10, 2nd \$6, 3rd \$4

Lot 14 Casualwear

Lot 15 Schoolwear

Lot 16 Bestwear

Lot 17 Formalwear

## DEPARTMENT (S)

### FCCLA BAKING

Samantha Kirby, Ashley Bogle, and Angie Stoklasa Coordinators

YOU MUST HAVE AN EXHIBITOR NUMBER TO ENTER

1. Only 1 entry per member per lot.
2. Product must be baked by person entering.
3. Entries should be on disposable plates covered with plastic wrap, or in Ziploc bags. (No aluminum foil).

### Class I-BREAD

Prizes: 1st - \$5, 2nd - \$3, 3rd - \$2

Lot 1 Biscuits (three)

Lot 2 Cornbread (three)

Lot 3 Muffins (three)

Lot 4 Quick Loaf (1/2 loaf)

Lot 5 Yeast Bread - plain or sweet (three)

### Class II-COOKIES

Prizes: 1st - \$5, 2nd - \$3, 3rd - \$2

Lot 6 Drop Cookies (three)

Lot 7 Miscellaneous Cookies (three)

Lot 8 Brownies (three)

### Class III-PIES

Prizes: 1st - \$5, 2nd - \$3, 3rd - \$2

Lot 9 Fruit Pie (whole pie)

Lot 10 Chess Pie/Chocolate Chess Pie (whole pie) Lot 11 Pecan Pie/Nut Pie (whole pie)

### Class IV-CAKES

Prizes: 1st - \$5, 2nd - \$3, 3rd - \$2

Lot 12 1/4 Any Cake with icing

Lot 13 Cake Pops (3)

Lot 14 1/4 Bundt Cake, glazed or unglazed

Lot 15 Cupcakes (3)

### CLASS V-CANDY

Prizes: 1st - \$5, 2nd - \$3, 3rd - \$2

Lot 16 Chocolate Fudge (3)

Lot 17 Jar of Hard Candy

Lot 18 Miscellaneous Candy (3)

## DEPARTMENT (T)

### FCCLA RELATED ARTS, CRAFTS & CLOTHING

Coordinators: Brooke Head, Jenny Lipscomb



**Christopher J. Armantrout**

Senior Loan Officer NMLS# 1210804

615.671.9178 | christopher@valor.mortgage

**BUY WITH CONFIDENCE.**  
**BUY WITH VALOR.**

[www.valor.mortgage](http://www.valor.mortgage)

*This Is Not A Commitment To Lend*

# DEPARTMENTS

YOU MUST HAVE AN EXHIBITOR NUMBER TO ENTER

1. No Glitter allowed on posters.
2. All items must be made by participant within last year.

## CLASS I - CRAFTS

Prizes: 1st - \$5, 2nd - \$3, 3rd - \$2

- Lot 1 Project Board Topic: Mental Health/ Teen Issues (no larger than tri-fold)
- Lot 2 Jewelry
- Lot 3 Miscellaneous Recycled or Original Craft or Clothing Item
- Lot 4 Original Art I – Ceramic, Wood, Sculpture, Etc.
- Lot 5 Original Art II – Drawing, Sketching, Painting, Etc.
- Lot 6 Photo – Animals or People (matted or framed)
- Lot 7 Photo – Landscape, Nature or other (matted or framed)
- Lot 8 FCCLA Related Poster 14"x22" Grades 9-10
- Lot 9 FCCLA Related Poster 14"x22" Grades 11-12
- Lot 10 Scrapbook
- Lot 11 Fashion Accessories

## CLASS II- CLOTHING

Prizes: 1st - \$10, 2nd - \$6. 3rd - \$4

- Lot 16 Clothing Project, 9th and 10th grade
- Lot 17 Clothing Project, 11th and 12th grade
- Lot 18 Sewing Project, 9th and 10th grade
- Lot 19 Sewing Project 11th and 12th grade

## Class III - Education & Training

- Lot 1 Bulletin Board Design - Elementary
  - Lot 2 Bulletin Board Design - Middle School
  - Lot 3 Bulletin Board Design - High School
- \*\*Bulletin board designs can be done on trifold boards or large poster board.*
- Lot 4 Classroom Shoebox Design
- \*\*Setup your dream classroom in a shoebox; consider student seating, board views, coloring, décor, comfort, environment, etc. You may submit a one page typed explanation (bullet points are sufficient) to explain your classroom setup with your submission.*

## DEPARTMENT (U)

### FCCLA CANNING

Coordinators: Myra Dew, Kayla Haley, and Jill Wingo

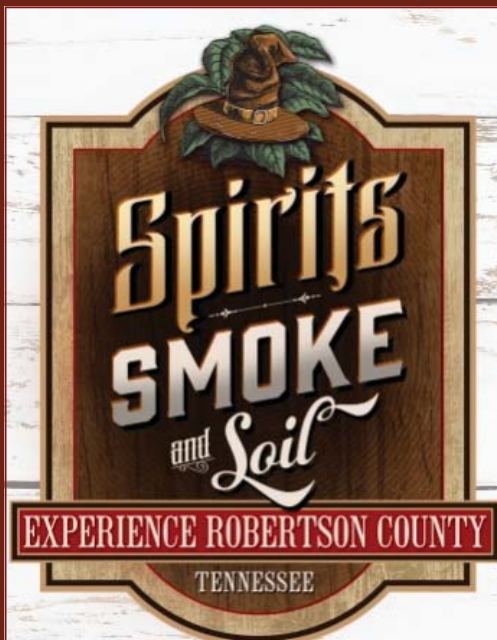
YOU MUST HAVE AN EXHIBITOR NUMBER TO ENTER

1. Jars should be labeled with name and school on bottom
2. Standard canning jars should be used for all products
3. All products must have been canned within the last 12 months
4. Limit of 1 entry per member per lot.
5. Label all jams, jellies, preserves as to flavor.

## CLASS I

Prizes: 1st - \$5 2nd- \$3 3rd \$2

- Lot 1 Fruit
- Lot 2 Juice
- Lot 3 Vegetables
- Lot 4 Tomatoes
- Lot 5 Green Beans
- Lot 6 Salsa
- Lot 7 Tomato Relish
- Lot 8 Other Relish
- Lot 9 Jam
- Lot 10 Jelly
- Lot 11 Preserves
- Lot 12 Cucumber Pickles
- Lot 13 Other Pickles
- Lot 14 Miscellaneous Canned Food



## Saturday September 14, 2019

*One County, Eleven Cities!*

Take this self-guided tour and stop in each of our eleven cities to collect your passport stamp as you Experience what each community has to offer. Host businesses in each city will start welcoming guest at 9:00 am until 4pm.

Each stamp collected is your chance to win part of the \$1500 cash prize!

Join us on the Square from 3:00pm-6:00pm for a Robertson County showcase of farmers, food, music, artisans and the cash and prize giveaways.

The drawing will take place at 5:45 p.m. and you must be present to win.

For more information visit us at [www.robertsonchamber.org/experience](http://www.robertsonchamber.org/experience) or

Facebook @ExperienceRobertsonCounty

Adams. Cedar Hill. Coopertown. Orlinda. Cross Plains. White House. Millersville. Springfield. Greenbrier. Ridgetop. Portland