



SEMPERFICON COMPANY PROFILE

2025



TABLE OF CONTENTS

- 1** Company Overview
- 2** The Construction Industry
- 7** About Us
- 9** Our Story
- 11** Our Vision
- 12** Our Mission
- 13** Our Services
- 18** The Semperficon Advantage
- 20** Our Organizational Structure
- 21** Our Tools & Equipment
- 22** Our Contact Details

COMPANY OVERVIEW



Semperficon



2020



Morning Glory street
Door I – 28 VV Soliven
1800 Cainta Rizal – Philippines



info@semperficon.com



www.semparficon.ph

THE CONSTRUCTION INDUSTRY

OVERVIEW

The Philippine construction industry is a vital driver of economic growth, contributing significantly to GDP and employment. Fueled by government infrastructure projects, urbanization, and private sector investments, the industry has shown resilience despite economic fluctuations.



INDUSTRY TRENDS



Strong Government Support

The **"Build, Better, More"** infrastructure program (the continuation of "Build, Build, Build") is expected to drive demand for roads, bridges, railways, and other public infrastructure projects. The government allocated ₱1.42 trillion for infrastructure development in the 2024 national budget, representing 5.3% of GDP.

THE CONSTRUCTION INDUSTRY

INDUSTRY TRENDS



Private Sector Growth

The Philippine real estate market continues to recover, with residential, commercial, and mixed-use developments driving investments.



Rapid Urbanization

With over 50% of the population living in urban areas, demand for modern housing, commercial buildings, and industrial spaces remains high, leading to more renovation and retrofitting projects.



Steel and Concrete Demand

The Philippine steel industry expects a 5 to 6% annual growth, driven by increasing construction activities and infrastructure projects. The demand for precast concrete solutions is also rising due to its efficiency in large-scale developments.

THE CONSTRUCTION INDUSTRY

INDUSTRY CHALLENGES



Rising Construction Costs

Inflation and increased prices of raw materials (steel, cement, and fuel) pose challenges for construction companies.



Skilled Labor Shortage

The industry faces a declining workforce as skilled workers migrate abroad for better opportunities.

Regulatory Compliance

Construction firms must adhere to strict government regulations, safety protocols, and environmental policies.

THE CONSTRUCTION INDUSTRY

OPPORTUNITIES FOR SEMPERFICON

Given the current industry landscape, Semperficon is strategically positioned to take advantage of key growth areas:



Increased Demand for Steel Fabrication & Precast Concrete – As infrastructure and private projects expand, the need for high-quality, ready-made construction materials is rising. Semperficon can leverage its state-of-the-art machinery to provide custom steel fabrication and efficient precast concrete solutions to meet market demand.



Expansion into the Private Sector – With real estate and commercial construction on the rise, Semperficon can further tap into private contracts, particularly in renovations, commercial fit-outs, and high-quality steelwork for office buildings and industrial sites.

THE CONSTRUCTION INDUSTRY

OPPORTUNITIES FOR SEMPERFICON



Competitive Advantage in Quality & Efficiency –

Many firms struggle with project delays and quality issues due to labor shortages. Semperficon's hands-on approach, precision engineering, and use of advanced technology position it as a reliable and efficient alternative in the market.



Sustainability & Innovation – The shift toward eco-friendly construction creates an opportunity for Semperficon to explore sustainable building materials, energy-efficient designs, and green construction practices, aligning with global and local trends.

ABOUT US

Founded in 2020, **Semperficon Corp.** has quickly grown into a trusted name in construction, steel fabrication, renovations, concrete precasting, roadworks and drainage, slope protection, and flood control projects.

With a strong commitment to quality, efficiency, and innovation, we deliver projects that meet the highest industry standards, serving both public and private sector clients.

Our expertise is rooted in years of experience in precision manufacturing and design, allowing us to integrate cutting-edge technology and superior craftsmanship into every project.

Our hands-on approach, combined with the use of state-of-the-art equipment like Scandinavian welding machines, CNC laser and plasma, and robotics, ensures that our structures are built to last.

ABOUT US

We Build Your Future.

At Semperficon Corp., we believe that every structure we create is more than just a project—it's a foundation for progress, stability, and long-term success.

Whether it's a public infrastructure project, a commercial development, or a custom steel fabrication, we ensure that our work stands the test of time.

Our commitment to precision, innovation, and quality craftsmanship means that we don't just meet industry standards—we set them.

OUR STORY

Our journey began in **2020** when four investors, each with extensive expertise and a shared passion for infrastructure innovation, design, quality construction, and fabrication, came together to make a meaningful impact on the industry.

With a background in high-end furniture fabrication in Europe—working with stainless steel, wood, and glass—their designs have been recognized by European registration entities and even shortlisted for the prestigious ***Red Dot Award***.

This deep appreciation for detail now drives our approach to construction and fabrication, ensuring excellence in every project we undertake.

OUR STORY

What started as a small operation has now grown into a company known for general construction, steel fabrication, renovations, and concrete precasting, delivering projects for both public and private sectors, which also include roadworks and drainage, slope protection, and flood control projects.

With a hands-on approach, **state-of-the-art equipment**, and a **strong commitment to quality and efficiency**, Semperficon ensures every project is executed with precision.

As we continue to expand, our focus remains on innovation, sustainability, and setting new industry standards—because at Semperficon, ***we build your future.***

OUR **VISION**

To be a **leading force** in the construction and fabrication industry, recognized for innovation, precision, and excellence.

We envision a future where our **expertise** in general construction, steel fabrication, and concrete precasting shapes communities, enhances infrastructure, and delivers sustainable, high-quality solutions to both public and private sectors.

OUR MISSION

At Semperficon Corp., we are committed to **building the future** with precision and reliability. Through our hands-on approach, attention to detail, and use of advanced technology, we ensure the **highest standards** in construction, renovation, and fabrication.

Our mission is to deliver **timely** and **high-quality** construction and fabrication solutions, maintain superior craftsmanship with cutting-edge equipment, and continuously expand and innovate to meet the growing demands of the industry.

OUR SERVICES

GENERAL CONSTRUCTION



At Semperficon, we handle full-scale construction projects from planning to completion, ensuring high-quality workmanship, compliance with industry standards, and efficient project management. Our expertise includes: **commercial and residential buildings, public infrastructure projects and industrial facilities.**

RENOVATIONS

We breathe new life into existing structures, improving functionality, aesthetics, and structural integrity. Our renovation services cover:

**commercial and residential remodeling,
structural strengthening and reinforcement
interior and exterior upgrades.**



STEEL FABRICATION



With state-of-the-art welding machines, CNC laser and plasma, and robotics, we deliver high-quality custom steel fabrications tailored to project needs. Our services include: **structural steelwork, custom metal fabrication, precision cutting and welding.**

CONCRETE PRECASTING

Our precast concrete solutions ensure efficiency and durability, reducing construction time while maintaining high structural quality. We provide:

custom concrete components, and ready-made structural elements for quick installation.



THE SEMPERFICON ADVANTAGE

Our Competitive Edge



Hands-On Project Management

We are actively involved in every phase of the project, ensuring close supervision and high-quality execution.



Attention to Detail & Timely Completion

We uphold strict quality control and efficient project timelines without compromising craftsmanship.



Advanced Equipment & Technology

We utilize Scandinavian welding machines, CNC laser and plasma, robotics, and other high-end fabrication tools for precise and durable output.

THE SEMPERFICON ADVANTAGE

Our Competitive Edge



Versatility in Construction & Fabrication

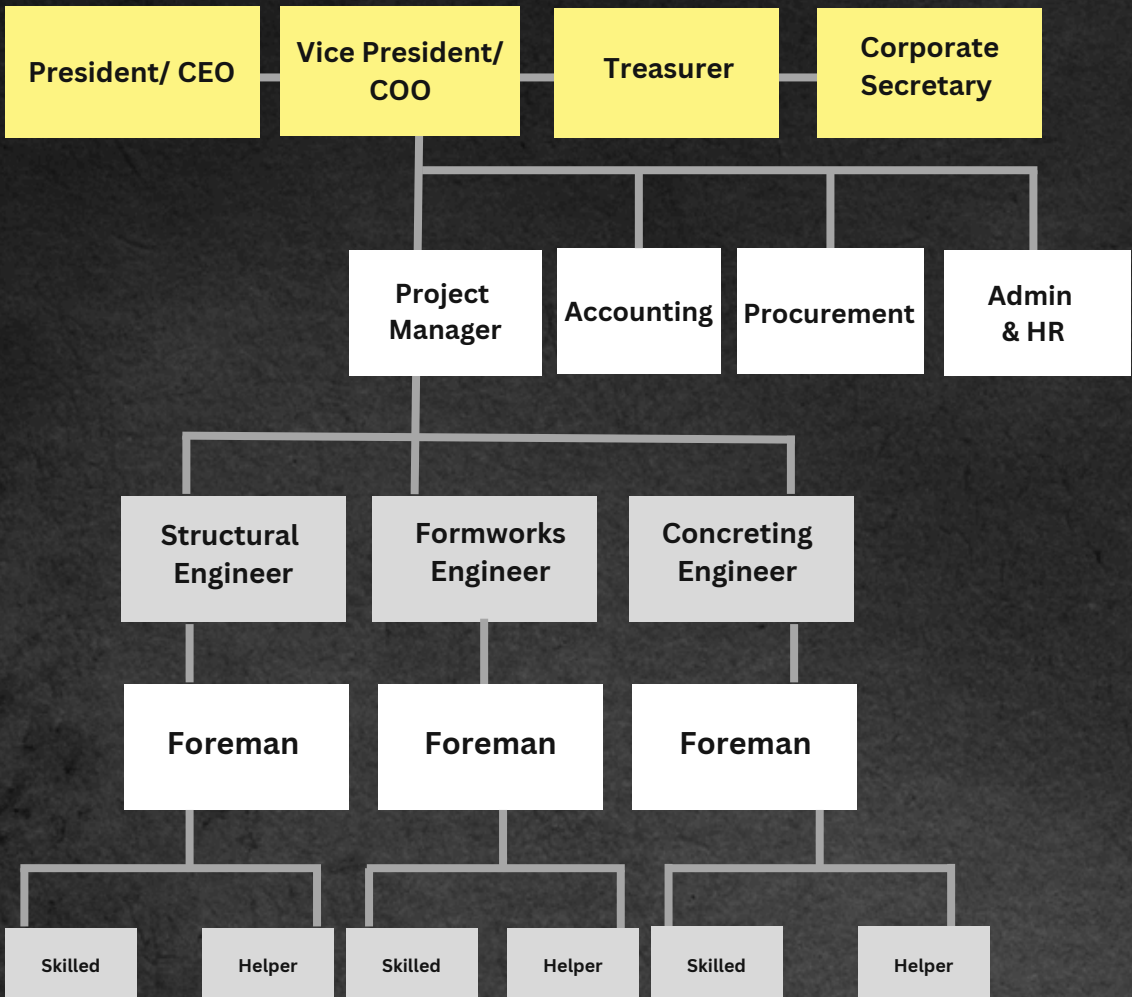
Our expertise spans general construction, steel fabrication, renovations, and concrete precasting, allowing us to handle a diverse range of projects.



Sustainable & Future-Ready Solutions

We focus on durability, efficiency, and long-term structural integrity, ensuring that our projects serve communities and businesses for years to come.

OUR ORGANIZATIONAL CHART



OUR TOOLS & EQUIPMENT

BACKHOES WITH BREAKER

PC 20 KOBELCO
PC 30 KOMATSU
PC 60 KOMATSU
PC 132 VOLVO

TRUCKING AND MOVING

VARIOUS TYPES OF
DUMPTRUCK
L300
CONCRETE MIXER 5 CBM
TOYOTA FORKLIFT
CHARIOT

VARIOUS TYPES OF EARTHWORK EQUIPMENTS

SCAFFOLDINGS
MANUAL BREAKERS OFF ALL SIZES
VARIOUS TYPES OF WELDING MACHINE ,
TIG -MIG-FLUX CORED , LASER AND STICK
CNC PLASMA TABLES
VARIOUS HAND, POWER AND
PNEUMATIC TOOLS OF ALL KINDS



OUR CONTACT DETAILS



Morning Glory street
Door I – 28 VV Soliven
1800 Cainta Rizal – Philippines



info@semperficon.com



www.semperficon.ph

We build your future.