

CORE[®]

CONTROL SYSTEMS



WHELEN[®]
MANUFACTURED IN AMERICA



CENCOM CORE[®] POWERED BY WECANX[®]

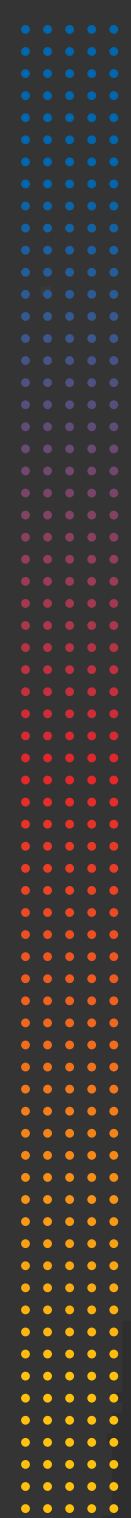
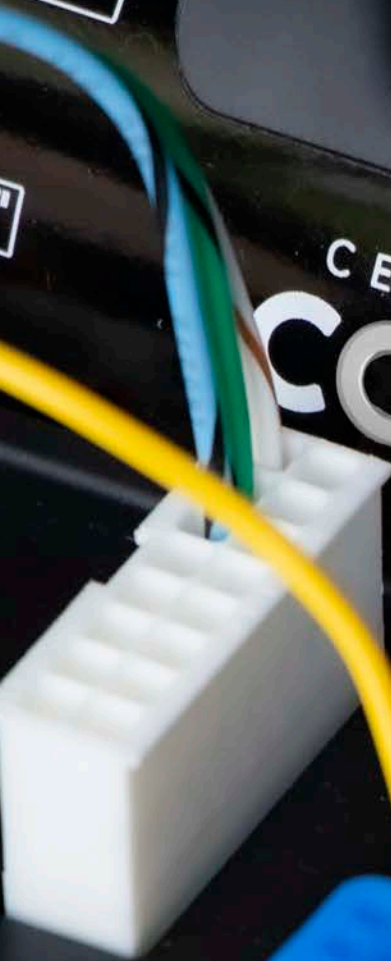
Whelen is redefining control systems with CenCom Core. With the greatest configurability, speed, and expansion yet, CenCom Core is a system created to enhance officer safety with advanced automation and remote connectivity.



ION MAP

J8

CENCOM
CORE POWERED BY
WECANX



ALL-NEW DESIGN

Every aspect of CenCom Core® is engineered for performance and designed for vast configuration, allowing for access to every connector and fuse from the top of the box. CenCom Core is built to scale with your needs.

CORE CORE-R
CORE-C



W E C A N X

WeCanX® is the smartest and most powerful CAN-based communication system we've ever engineered. Providing true system synchronization, greater speed capabilities, expanded peripheral add-ons, and full support of diagnostics, WeCanX is designed for optimal situational awareness programming.

WeCanX FEATURES

- Supports any combination of 99 WeCanX devices, including support for multiple Whelen peripherals of the same type on the same vehicle
- All CANport® signals are configurable as triggerable Events*

**Our original WeCan® only supports 8 CANport signals*

3

WHELEN
MANUFACTURED IN AMERICA

CenCom Core® Powered By WeCanX®
WHELEN ENGINEERING COMPANY, INC.

WARNING: These products may contain chemicals known to the State of California to cause cancer and birth defects or other reproductive harm. For more information, visit whelen.com/regulatory.



CORE-R™

Core-R™ is a vehicle control system engineered to enhance first responder and motorist safety with complete configurability, advanced automation, and remote connectivity.

- Seamlessly integrates with the Whelen Command® software
- Vehicle-to-Vehicle Sync and DVI™ patterns better convey information to approaching motorists
- Small footprint: 5.76" H x 5.46" W x 1.11" D
- Simple install: Two screws, top access connectors
- Modular design to mount in many different places
- Supports remote firmware updates through USB-C with Whelen Command or over-the-air with The Whelen Cloud Platform®
- Command can process over 65,000 virtual inputs
- High Current Remote Expansion Module integrates scene lights into WeCanX® system control
 - Operates high-current lightheades such as scene lights, eight 75-Watt or four 150-Watt Pioneer™ lightheades
 - 4 outputs at 15-Amps each
- Meets all applicable SAE and California Title XIII requirements with various Whelen speakers
- Processes over 65,000 virtual inputs



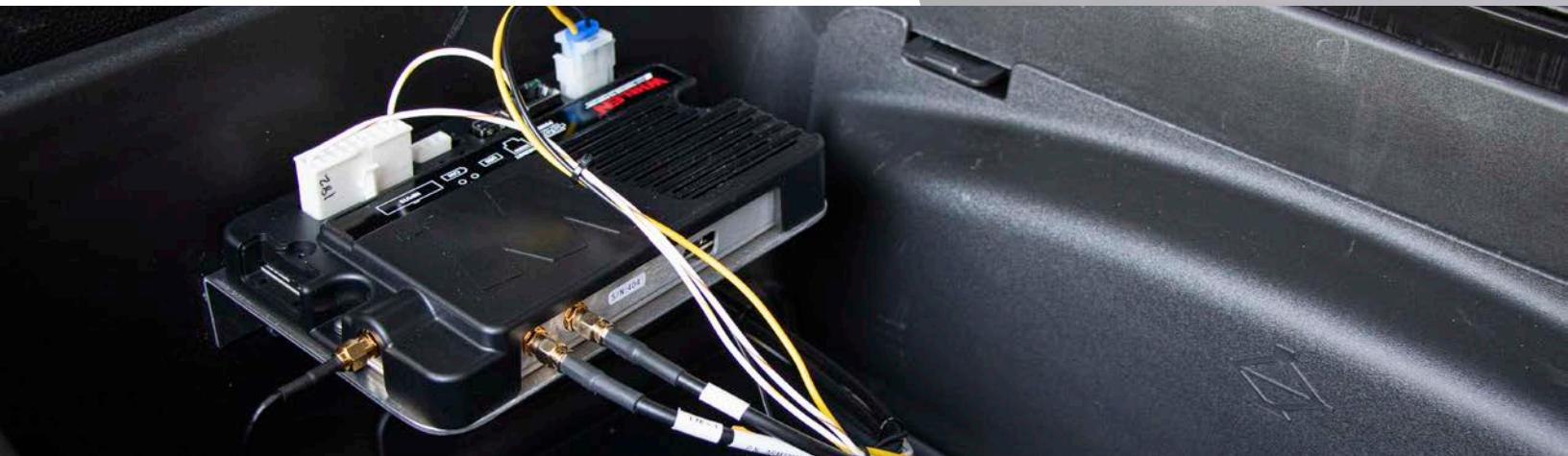
CORE-C™

Core-C™ is the heart of a sophisticated warning light system for work trucks. Delivering enhanced WeCanX safety features with plug and play ease of installation, Core-C provides the intelligence of a WeCanX controller with the functionality of a control head in one convenient and compact package.

- Seamlessly integrates with the Whelen Command software
- Vehicle-to-Vehicle Sync and DVI patterns better convey information to approaching motorists
- Small footprint: 4.4" H x 3.4" W x 1.18" D
- Simple installation in a console or using factory provided mounting hardware
- Supports remote firmware updates through USB-C with Whelen Command
- Remote Expansion Module can be used to bring benefits like DVI and V2V Sync to peripheral vehicle lighting as well

FIRMWARE UPDATES

CenCom Core® supports remote firmware updates through USB-C with Whelen Command® or over-the-air with The Whelen Cloud Platform®. All WeCanX® devices support encrypted firmware updates.



HIGH-SPEED CONNECTIONS

Core has extremely high-performance I/O. It features one ethernet connection, one WeCanX connection, two CANport™ OBDII interfaces, one USB-A port, and one USB-C port. With a variety of interfaces, Core is ready for a variety of configurations.

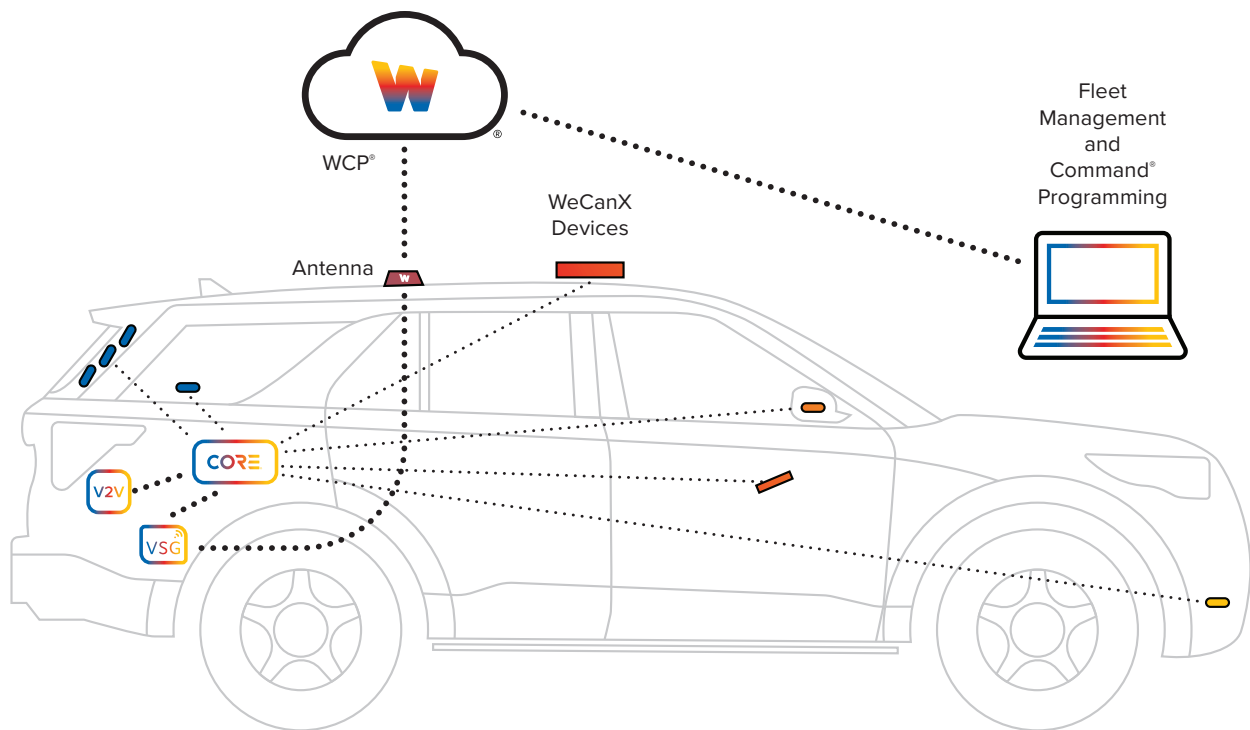
VEHICLE-TO-VEHICLE SYNC

A calm scene is a safe scene with V2V sync. Automatically synchronize lights and tones on vehicles within any proximity to aid approaching motorists.



ALL WHELEN DEVICES, ONE SEAMLESS EXPERIENCE

When you use WeCanX® products, CenCom Core®, or the Whelen Cloud Platform®, you're able to do incredible things to keep everyone safe. When you use them together, you can fully integrate and connect your Whelen products.



WARNING: These products may contain chemicals known to the State of California to cause cancer and birth defects or other reproductive harm. For more information, visit whelen.com/regulatory.

CenCom Core® Powered By WeCanX®
WHELEN ENGINEERING COMPANY, INC.

WHELEN
MANUFACTURED IN AMERICA

WHELEN COMMAND[®]

At the heart of CenCom Core[®] is Whelen's newest software, Whelen Command. Featuring an advanced user interface, Command is engineered to streamline the entire programming process and quickly provide updates and new releases. Command can process hundreds of virtual inputs.

Command features Situation-Based Integration and Events. With Situation-Based Integration, scene-specific functions can be created and automated, utilizing various vehicle components and signals. With Events, multiple user-defined rules can be created for specific situations and can be dependent on the state of your vehicle.



WeCanX[®] DEVICES

Now you can customize CenCom Core[®] in ways never before possible in a control system.

Legacy[®], Liberty[™] II, Freedom[®] IV, Justice[®] DUO[™] and Cenator[®] lightbars
Inner Edge[®] FST[™], RST[™], & XLP[™]
Tracer[™] WeCanX
WeCanX 2250
External Amplifier

External Howler[™] Siren
Remote 8 or 16-Output Expansion Module
Core Control Point
Traffic Advisor[™] Module
V2V Sync Module
High Current Remote Expansion Module

LIGHTBARS

Legacy, Liberty II, Freedom IV, Justice DUO, and Cenator lightbars now support WeCanX with expanded control of individual lightheads in DUO and TRIO[™] models and in lengths over 60”.

INNER EDGE FST & RST

Inner Edge FST and RST models now support WeCanX with expanded control of individual lightheads in DUO and TRIO models.

EXTERNAL AMPLIFIER

- Can be operated independently of other sirens
- Tones can be synchronous or asynchronous
- Public address
- Digital voice messages
- Variable intensity tones

EXTERNAL HOWLER SIREN

- Can be operated independently of other sirens
- Howler now plays its own tone rather than sensing and following an existing tone
- Tones can be synchronous or asynchronous
- Low-intensity mode

REMOTE 8 OR 16 OUTPUT EXPANSION MODULE

- 4 programmable logic inputs
- Cruise mode
- Same functionality as existing remote modules

HIGH CURRENT REMOTE EXPANSION MODULE

- Integrate scene lights into WeCanX system control. Outputs can flash, dim, or gradually increase or decrease the light intensity of scene lights, further calming a scene.
- Operates high-current lightheads such as scene lights, eight 75-Watt or four 150-Watt Pioneer[™] lightheads
- 4 outputs at 15-Amps each

TRAFFIC ADVISOR MODULE


- Ground switched for Whelen capability
- 9 conductors
- Uses the current 12-position commercial Mate-N-Lok[™] connector

V2V (VEHICLE-TO-VEHICLE) SYNC MODULE

- Synchronize lights and tones on an unlimited number of vehicles within any proximity.
- 10-30 VDC power supply
- Includes diagnostic indicator

CONTROL POINT

- Diagnostic output
- Can be selected in WeCad[™] as an option

 **WARNING:** These products may contain chemicals known to the State of California to cause cancer and birth defects or other reproductive harm. For more information, visit whelen.com/regulatory.

CenCom Core[®] Powered By WeCanX[®]
WHELEN ENGINEERING COMPANY, INC.

WHELEN
MANUFACTURED IN AMERICA



WeCanX[®] CONTROL HEADS

Ergonomically designed for situational awareness, WeCanX control heads are completely configurable. Models support flashing indicator LEDs and can also run system diagnostics. The new passthrough WeCanX connection on the back of the control heads contributes to less wiring and an easier install.



CCTL6

- 4-position slide switch
- 13 push-buttons
- 7-position rotary knob



CCTL7

- 4-position slide switch
- 21 push-buttons



CCTL8

- 4-position slide switch
- 6 push-buttons



CCTL5

- Handheld 5-position
- 9 push-buttons
- Microphone extension cable

MODEL	DESCRIPTION
C399	CenCom Core® Amplifier Control Module
C399R	CenCom Core-R™ Control System
CCP9	Core-C™ System, 4-Position Slide Switch and 6 Push-Buttons. One 5-amp output for auxiliary lighting. LED TA Indicator, 10-30 VDC and V2V Sync Capable
CCTL5	Handheld Control Head and Microphone
CCTL6	WeCanX® Slide and Rotary Knob Control Head
CCTL7	WeCanX Slide and 21 Push-Button Control Head
CCTL8	WeCanX Slide and 6 Push-Button Control Head
CCTLHARN	Control head harness kit, for use with any non-primary control head
CEM8	WeCanX 8 Output Expansion Module (4 input modules)
CEM16	WeCanX 16 Output Expansion Module (4 input modules)
CTA	WeCanX Traffic Advisor™ Module (Traffic Advisor purchased separately)
CEXAMP	WeCanX External Amplifier
CHOWLER	WeCanX Howler™ Siren
CV2V	WeCanX Vehicle-to-Vehicle Synchronization Module (includes internal antenna)
CCP	Control point for use with WeCanX devices when NOT using CenCom Core or Core-R
CEM4HC	WeCanX High Current Remote Expansion Module, 4-15 Amp output
C399K1	Installation Kit for C399 for 2016-2019 Ford Interceptor Utility, 2020-2021 Ford Interceptor Utility used with Factory Option 61B, 2016-2020 Ford F-150, 2018-2019 Ford, F-250/350/450/550, Expedition and Transit 150/250/350, 2017-2019 Ford Fusion (All Models), 2020 Ford Fusion Hybrid and 2016-2017 Dodge Charger
C399K2	Installation Kit for C399 for Chevy, 2017-2020 Tahoe, 2017-2018 Silverado 1500, 2019-2021 Silverado 1500 (New Body Style), 2017-2019 Silverado 2500/3500, 2019-2021 Colorado 1500, 2019 Impala, 2018-2020 Suburban
C399K3	Installation Kit for C399 for 2018-2021 Ram Classic 1500, 2019-2021 Ram 1500, and 2018-2021 Dodge Charger and Durango
C399K4	Installation Kit for C399 for the 2020-2021 Ford Utility
C399K5	Installation Kit for C399 for the 2020-2021 Ford Transit, Super Duty, and Expedition
C399K6	Installation Kit for C399 for the 2021 Chevy Tahoe and Suburban
C399K7	Installation Kit for C399 for the 2021 Ford F-150
C399K8	Installation Kit for C399 for the 2021-2022 Tesla Model Y
C399K9	Installation Kit for C399 for the 2022 Chevrolet Silverado 1500 SSV and Colorado
C399RK1	Installation Kit for C399R for 2016-2019 Ford Interceptor Utility, 2020-2021 Ford Interceptor Utility used with Factory Option 61B, 2016-2020 Ford F-150, 2018-2019 Ford, F-250/350/450/550, Expedition and Transit 150/250/350, 2017-2019 Ford Fusion (All Models), 2020 Ford Fusion Hybrid and 2016-2017 Dodge Charger
C399RK2	Installation Kit for C399R for Chevy, 2017-2020 Tahoe, 2017-2018 Silverado 1500, 2019-2021 Silverado 1500 (New Body Style), 2017-2019 Silverado 2500/3500, 2019-2021 Colorado 1500, 2019 Impala, 2018-2020 Suburban
C399RK3	Installation Kit for C399R for 2018-2021 Ram Classic 1500, 2019-2021 Ram 1500, and 2018-2021 Dodge Charger and Durango
C399RK4	Installation Kit for C399R for the 2020-2021 Ford Utility
C399RK5	Installation Kit for C399R for the 2020-2021 Ford Transit, Super Duty, and Expedition
C399RK6	Installation Kit for C399R for the 2021 Chevy Tahoe and Suburban
C399RK7	Installation Kit for C399R for the 2021 Ford F-150
C399RK8	Installation Kit for C399R for the 2021-2022 Tesla Model Y
C399RK9	Installation Kit for C399R for the 2022 Chevrolet Silverado 1500 SSV and Colorado



CORE[®] TECHNICAL SPECS



SOFTWARE	Whelen Command [®]		
HARDWARE SUPPORT	Up to 99 WeCanX [®] devices	WeCanX Legacy [®] , Liberty [™] II, Freedom [®] IV, and Cenator [®] lightbars. Inner Edge [®] FST [™] , RST [™] , and XLP [™] . Remote 8 or 16 Output Expansion Module V2V Sync Module	
INPUTS	12 logic inputs 4 analog inputs 1 ignition power-up input 17 total inputs	3 digital 4 analog 1 ignition power-up input 8 total inputs	1 ignition power-up input
OUTPUTS	2 15A outputs 4 10A outputs 16 2A outputs 1 dry contact relay 23 total outputs Flashing outputs Every output across the system can be synchronized		1 5A output
CONNECTIONS	1 Ethernet connection 1 WeCanX connection CANport [™] 1 USB-A host 1 USB-C Supports up to 99 remote modules	1 Ethernet connection 1 WeCanX connection CANport 1 USB-C Supports up to 99 remote modules	1 WeCanX Connection 1 USB-C
SENSORS	Battery voltage sensor		
DVI PATTERNS & TONES	Gradually increase or decrease the output intensity within a flash pattern or tone.		
TONE SYNC	Sync amplifiers and speakers together Sync tones with lights (Patent-Pending)	Sync amplifiers together Sync tones with lights (Patent-Pending)	N/A
DIAGNOSTICS	Has diagnostic indicator		
CERTIFICATIONS	Meets all applicable SAE and California Title XIII requirements with various Whelen speakers	N/A	
WARRANTY	Five-year warranty		



www.whelen.com
51 Winthrop Road • Chester, CT USA 06412

133491 - 7/26/2022

