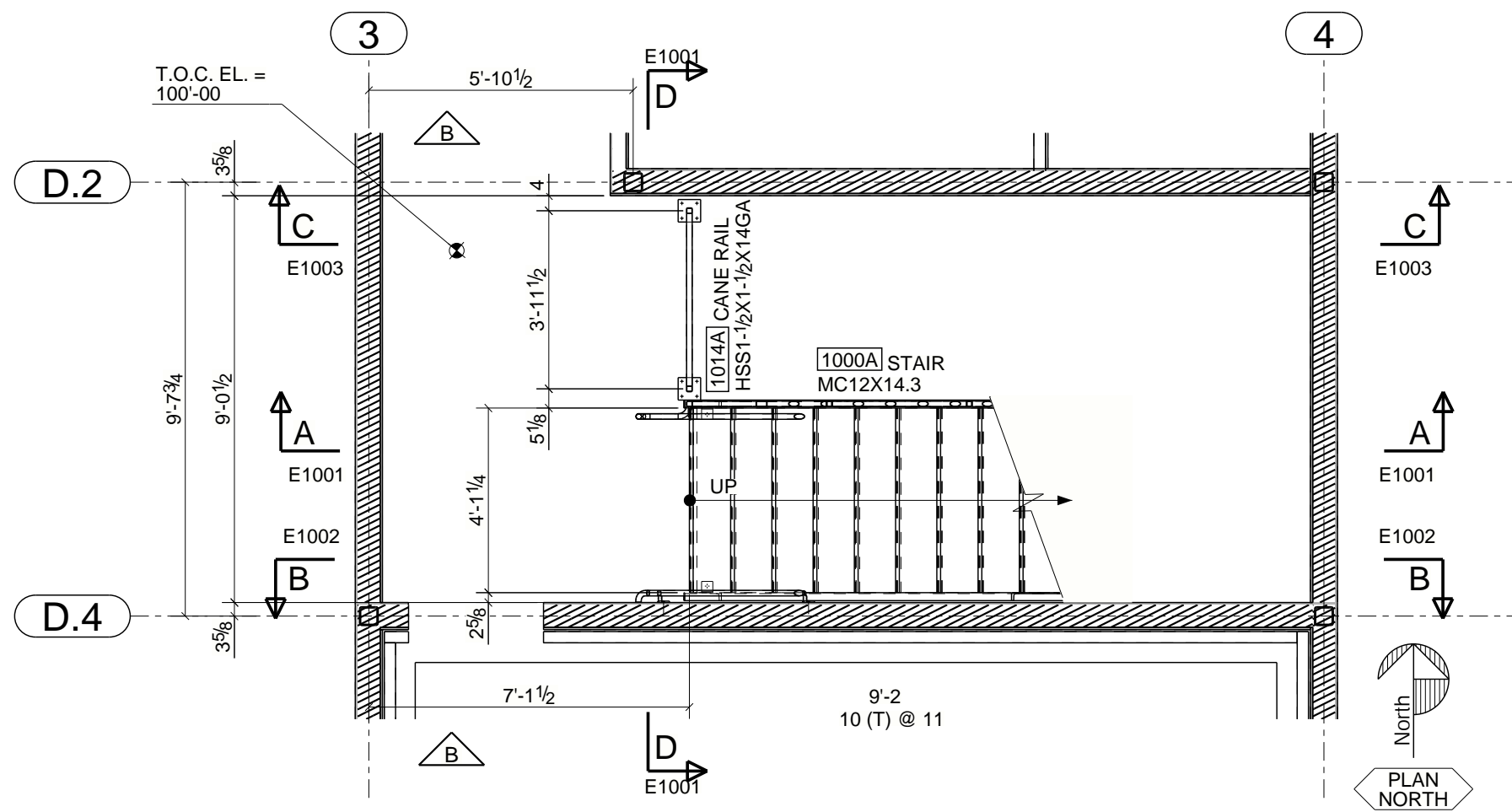
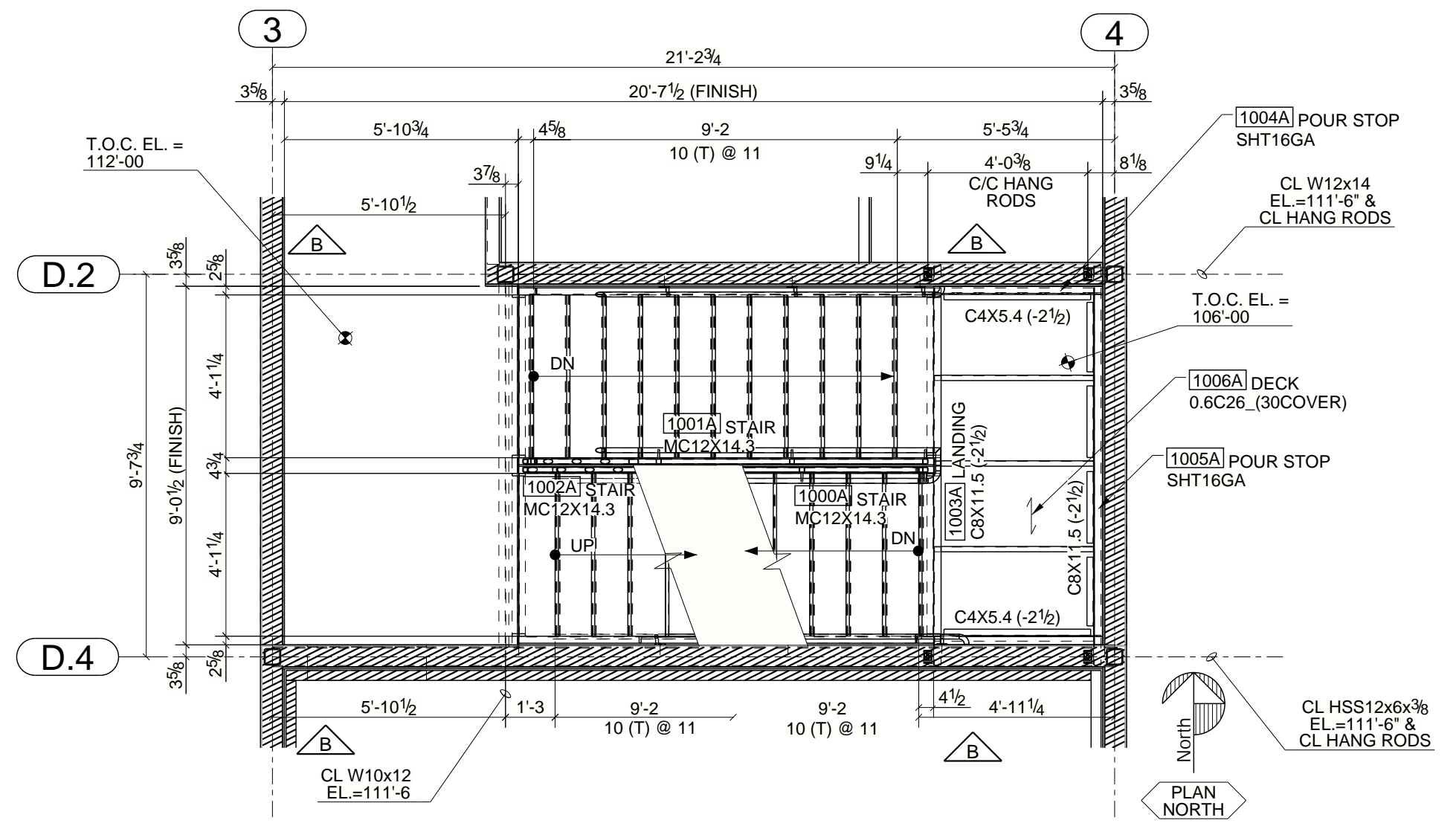


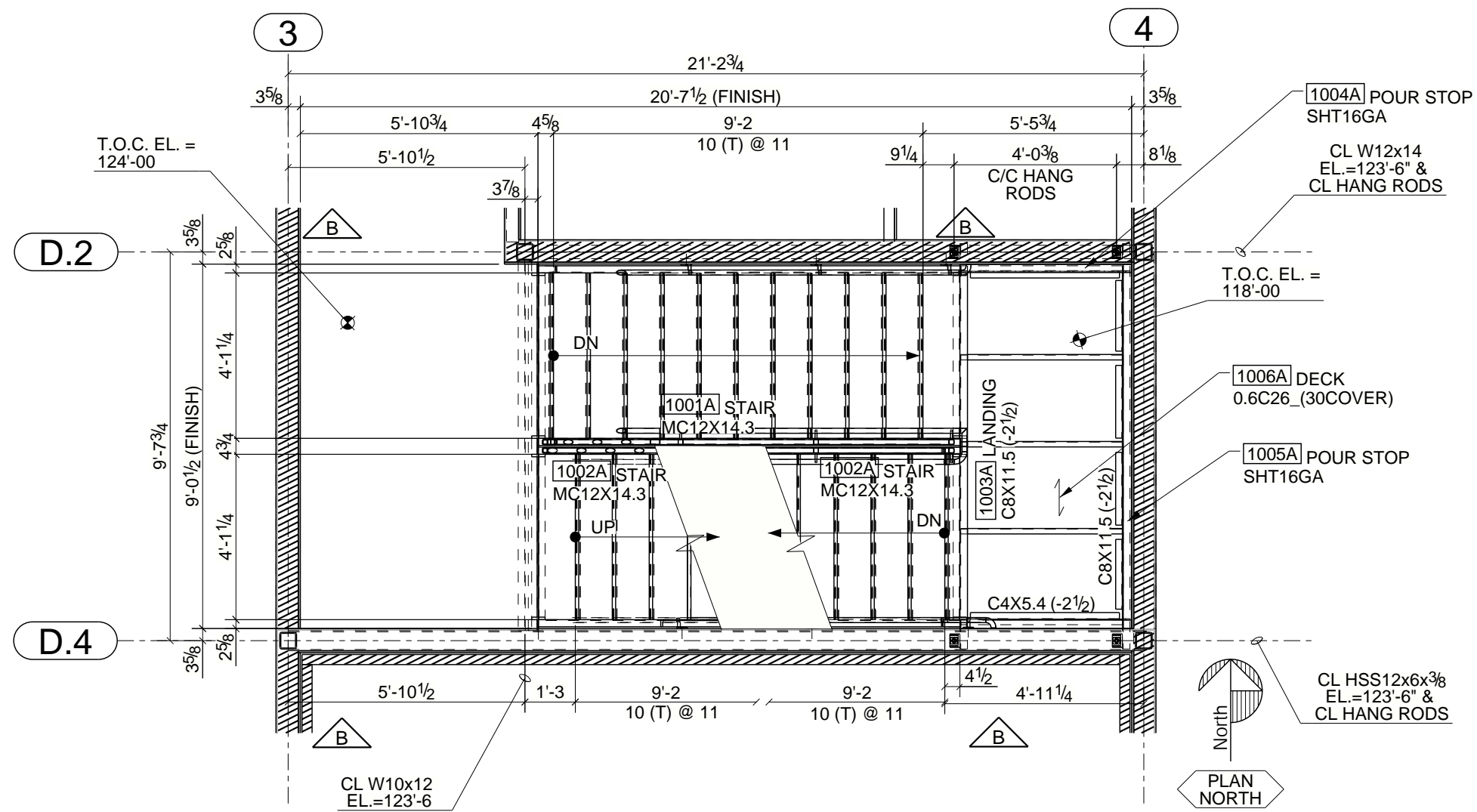
S01 - R01 ISO VIEW



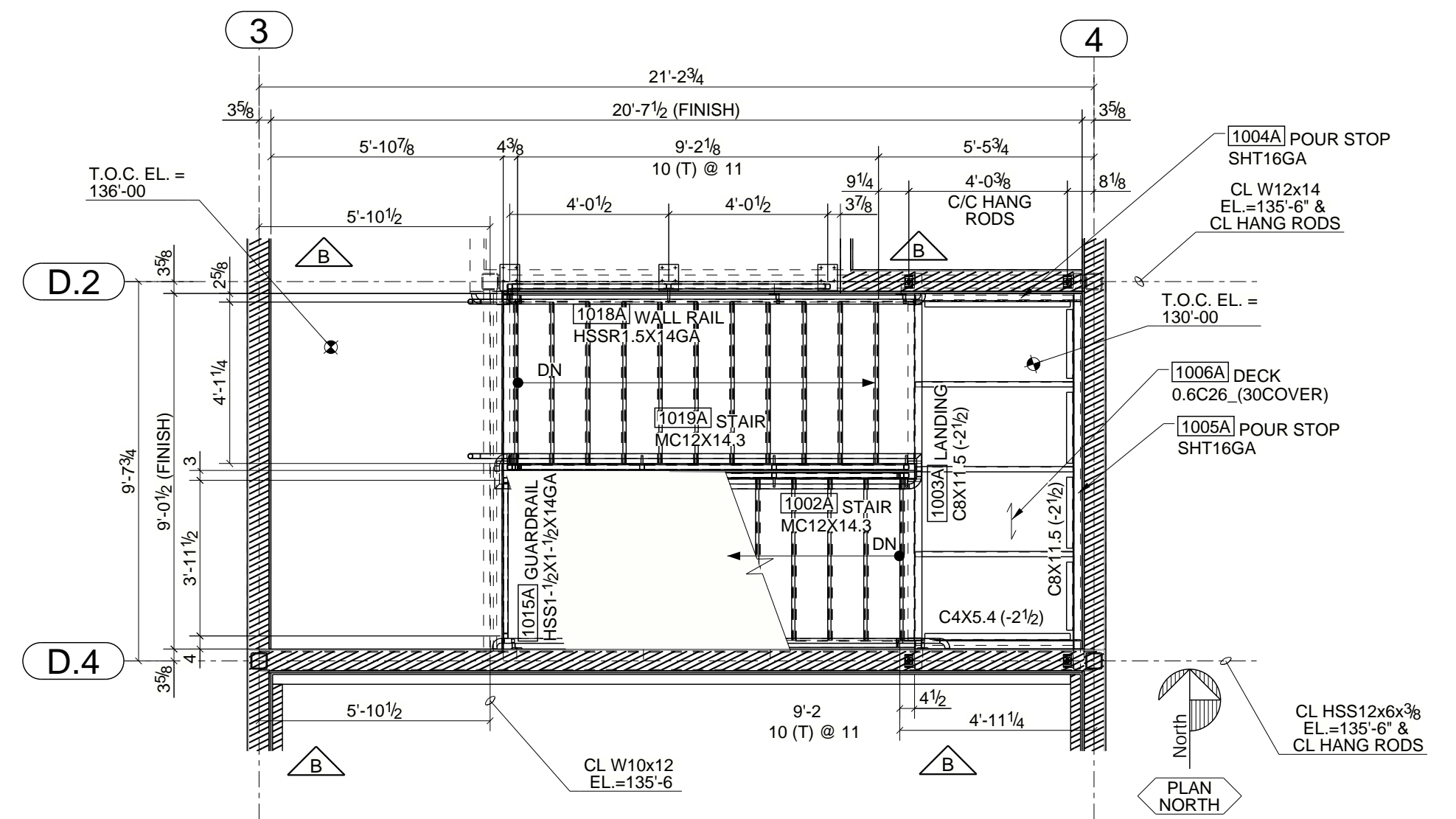
**PLAN VIEW AT LEVEL 1**  
 REF: A-404, A-001, S-101



**PLAN VIEW AT LEVEL 2**  
 REF: A-404, A-001, S-101

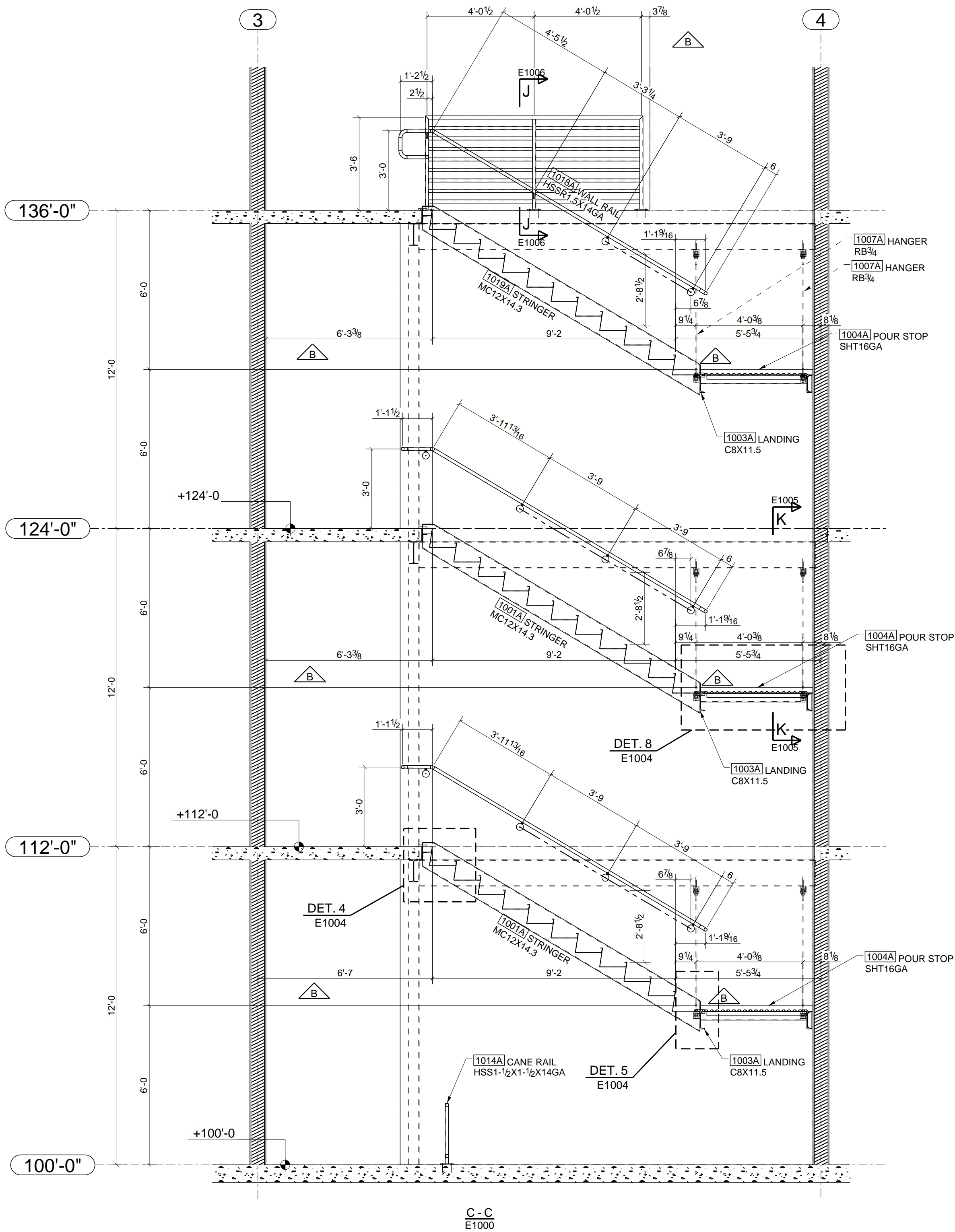


**PLAN VIEW AT LEVEL 3**  
 REF: A-404, A-001, S-101



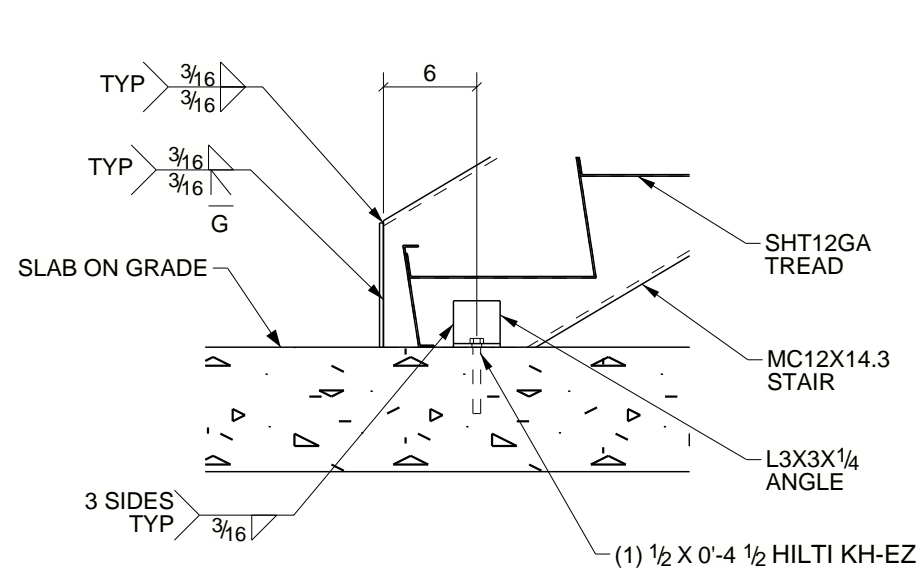
**PLAN VIEW AT ROOF**  
 REF: A-404, A-001, S-101



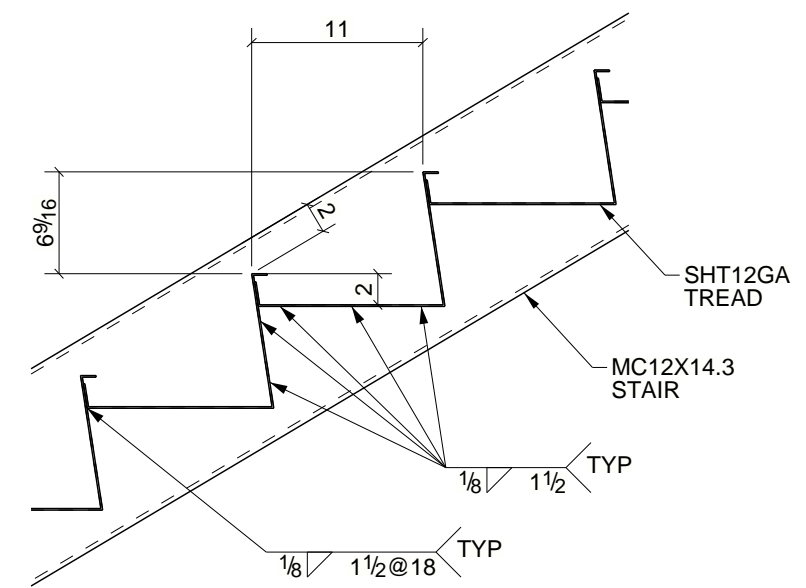


C-C  
E1000

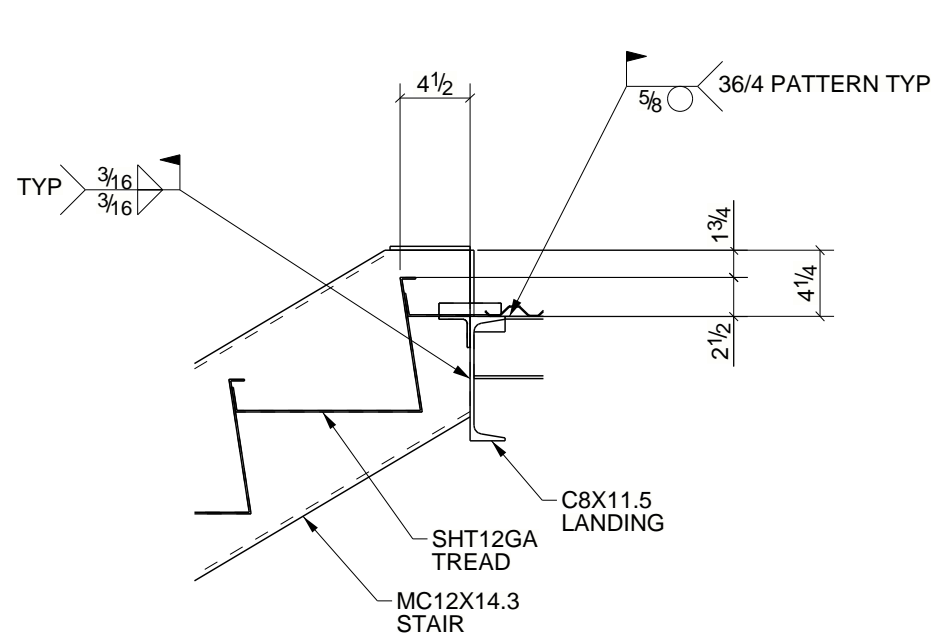
**INSTALLER NOTE: ERECTION AIDS PROVIDED AND WILL NEED TO BE REMOVED.**



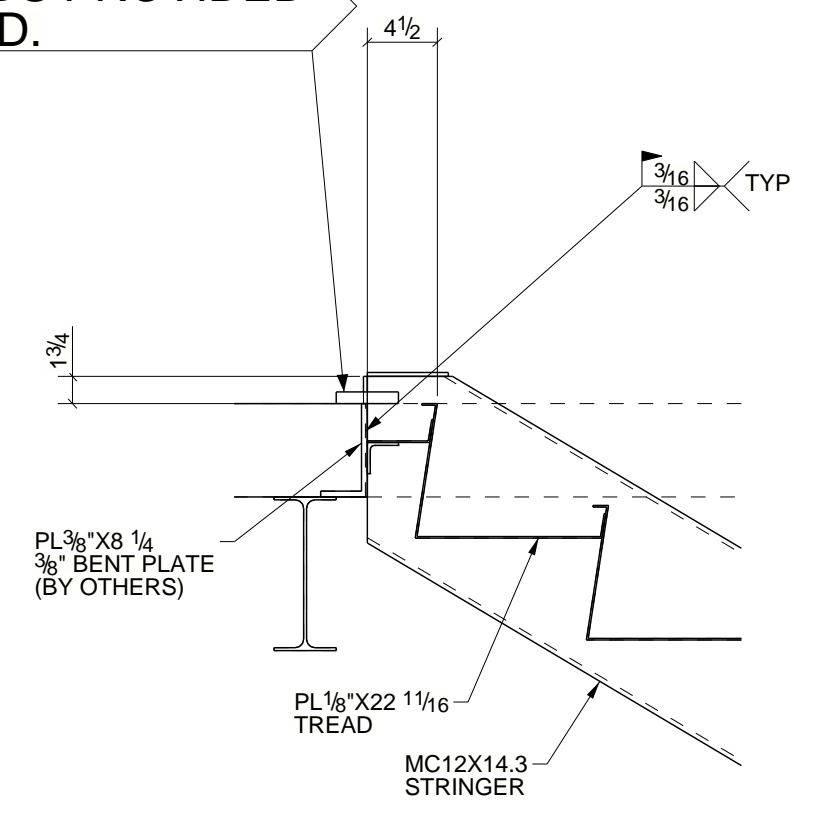
**DETAIL 1**  
E1001



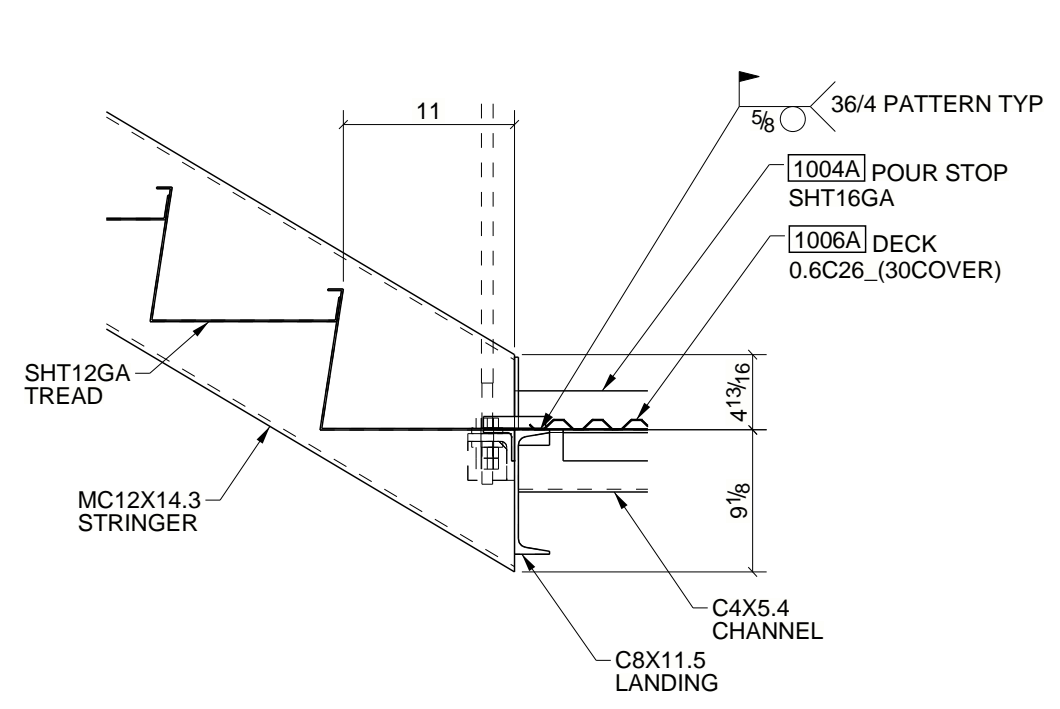
**DETAIL 2**  
E1001



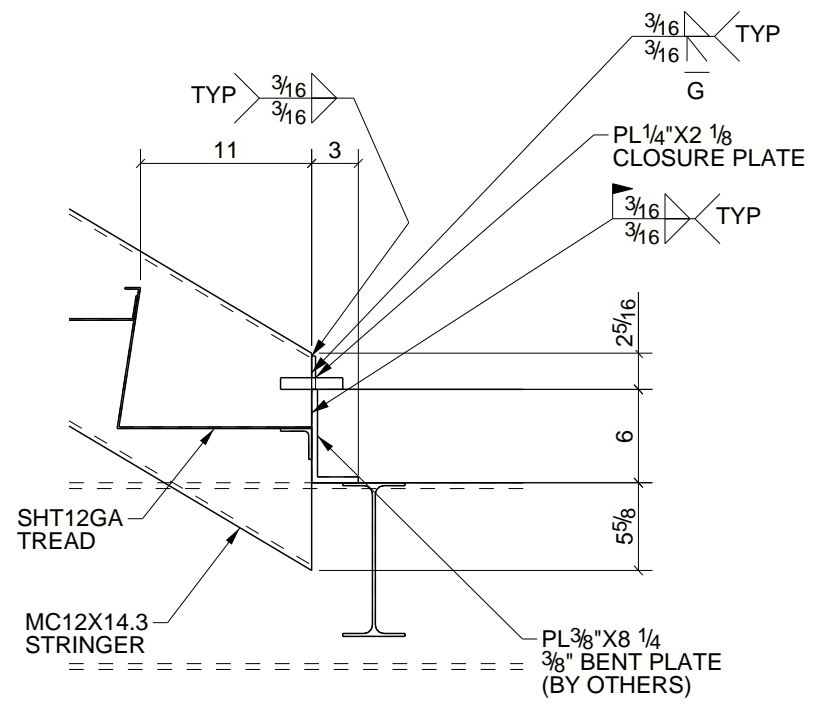
**DETAIL 3**  
E1001



**DETAIL 4**  
E1003

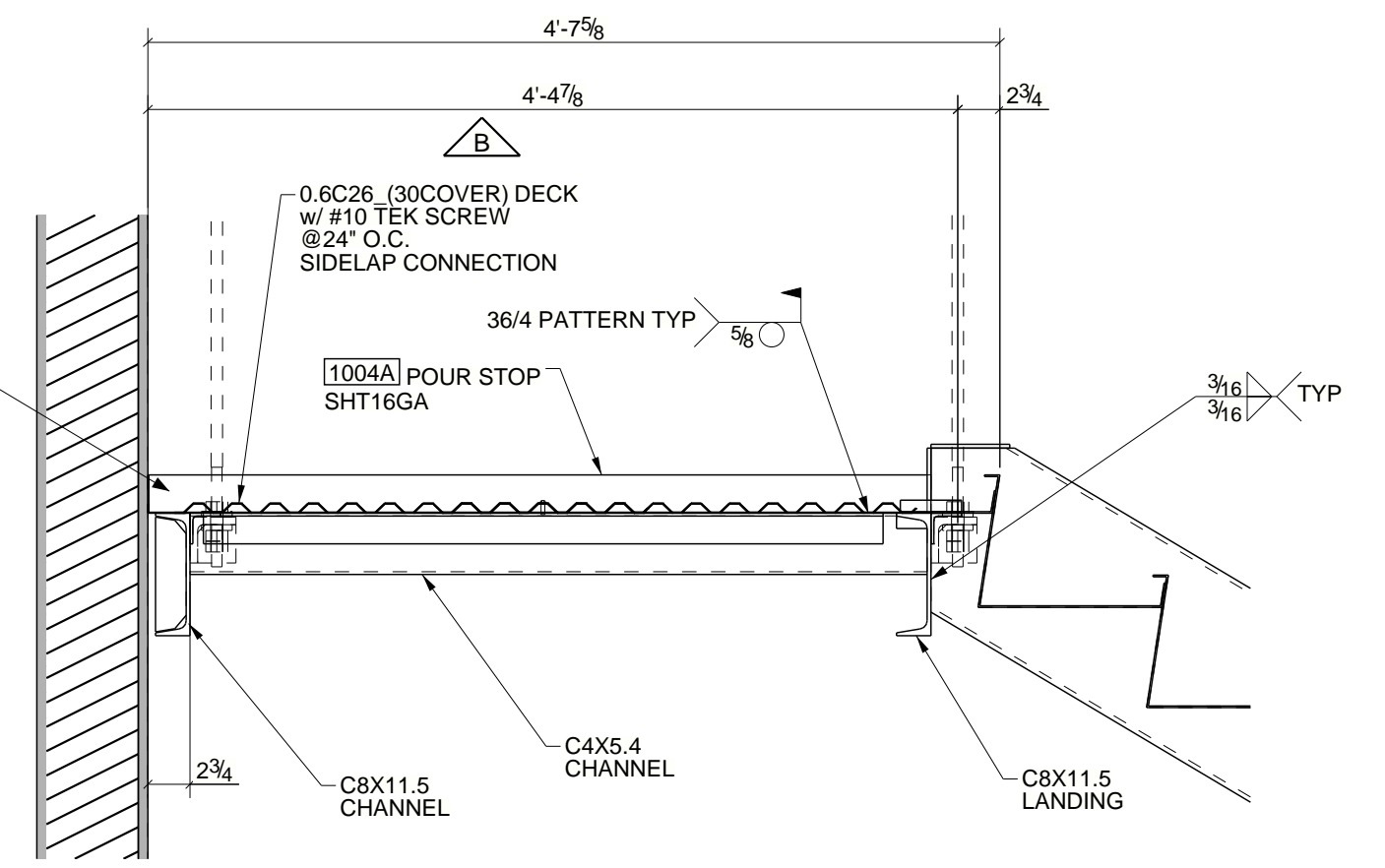


**DETAIL 5**  
E1003

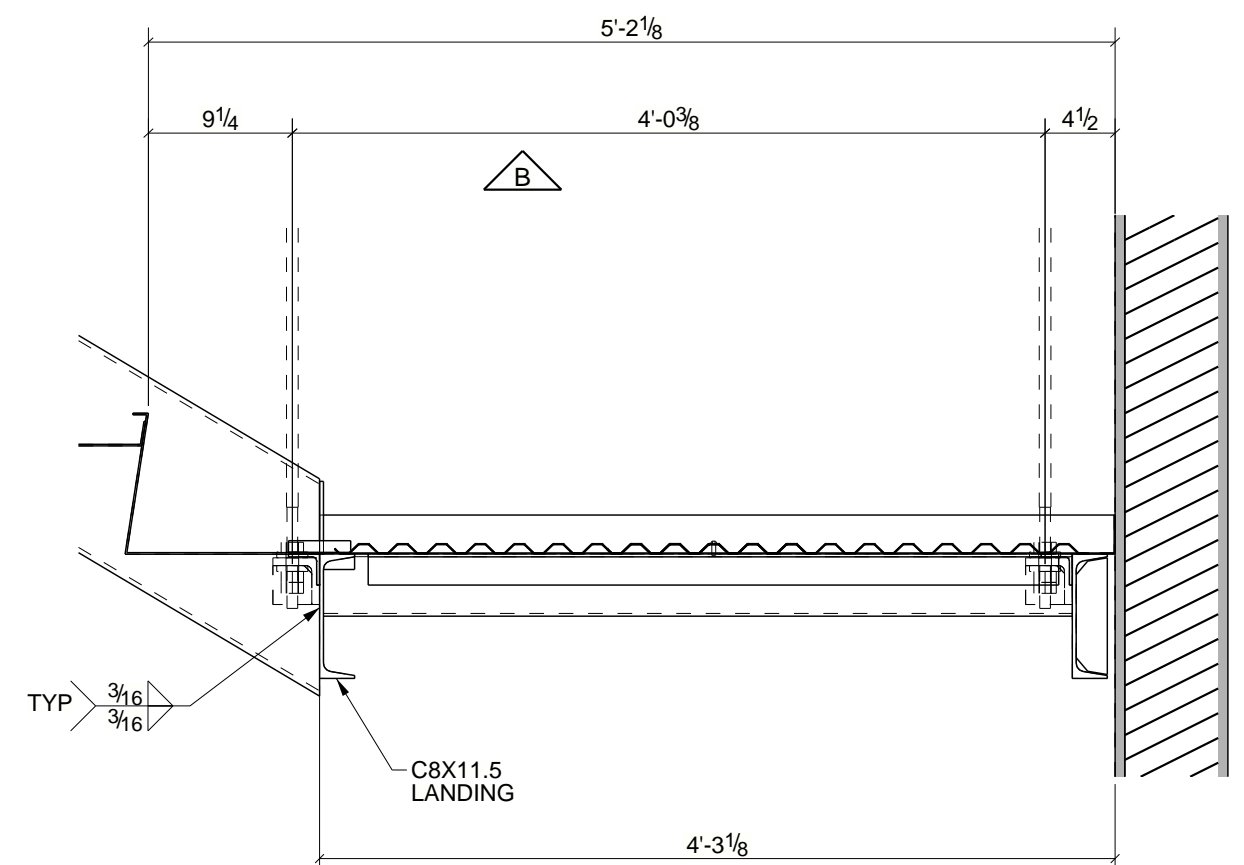


**DETAIL 6**  
E1002

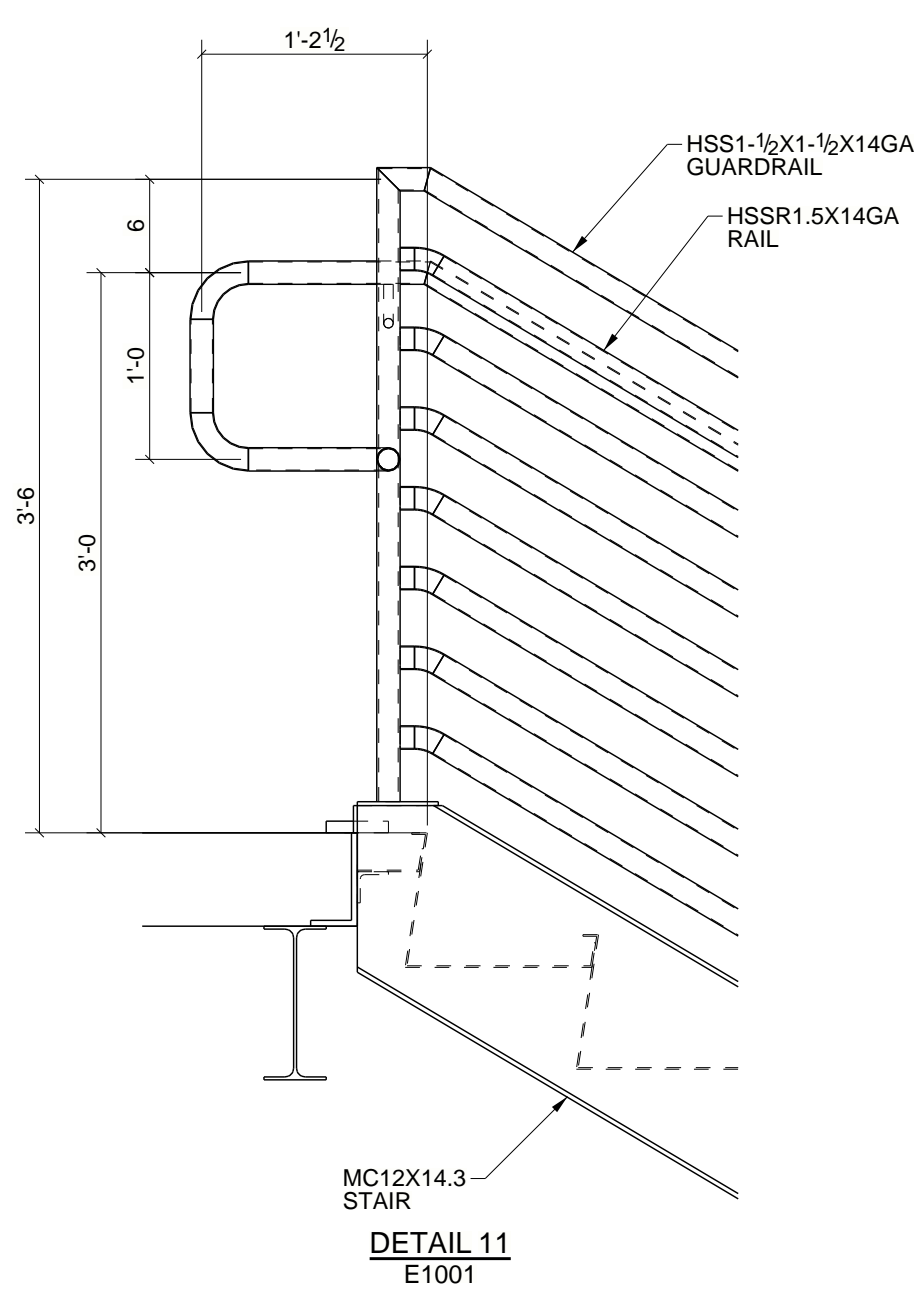
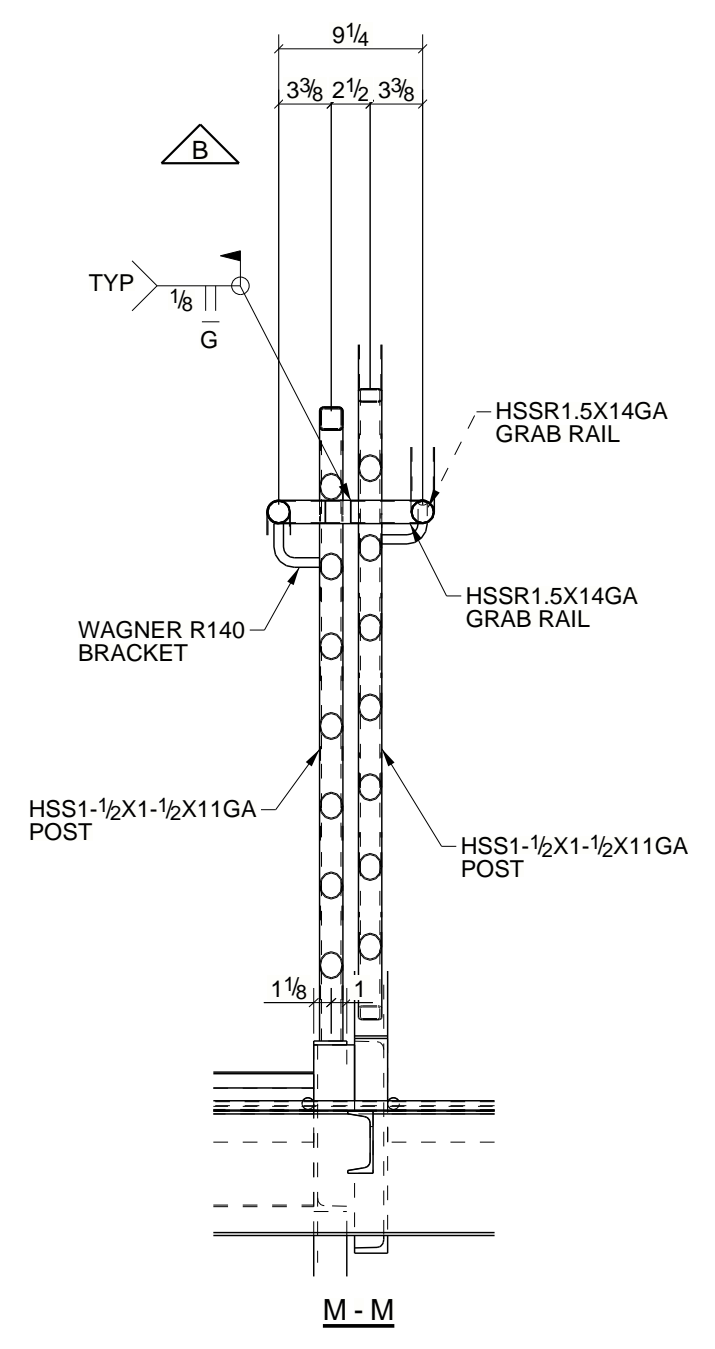
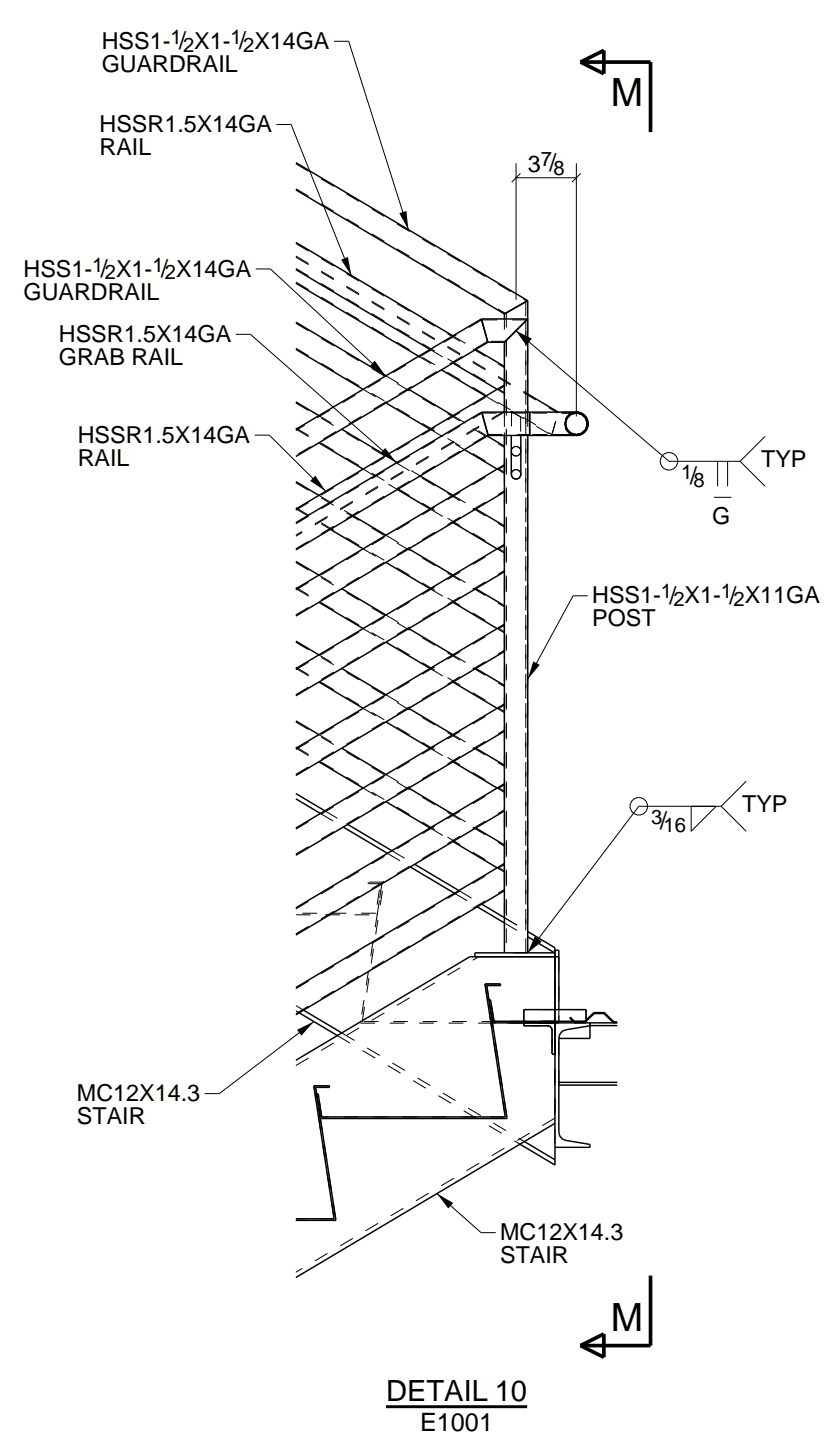
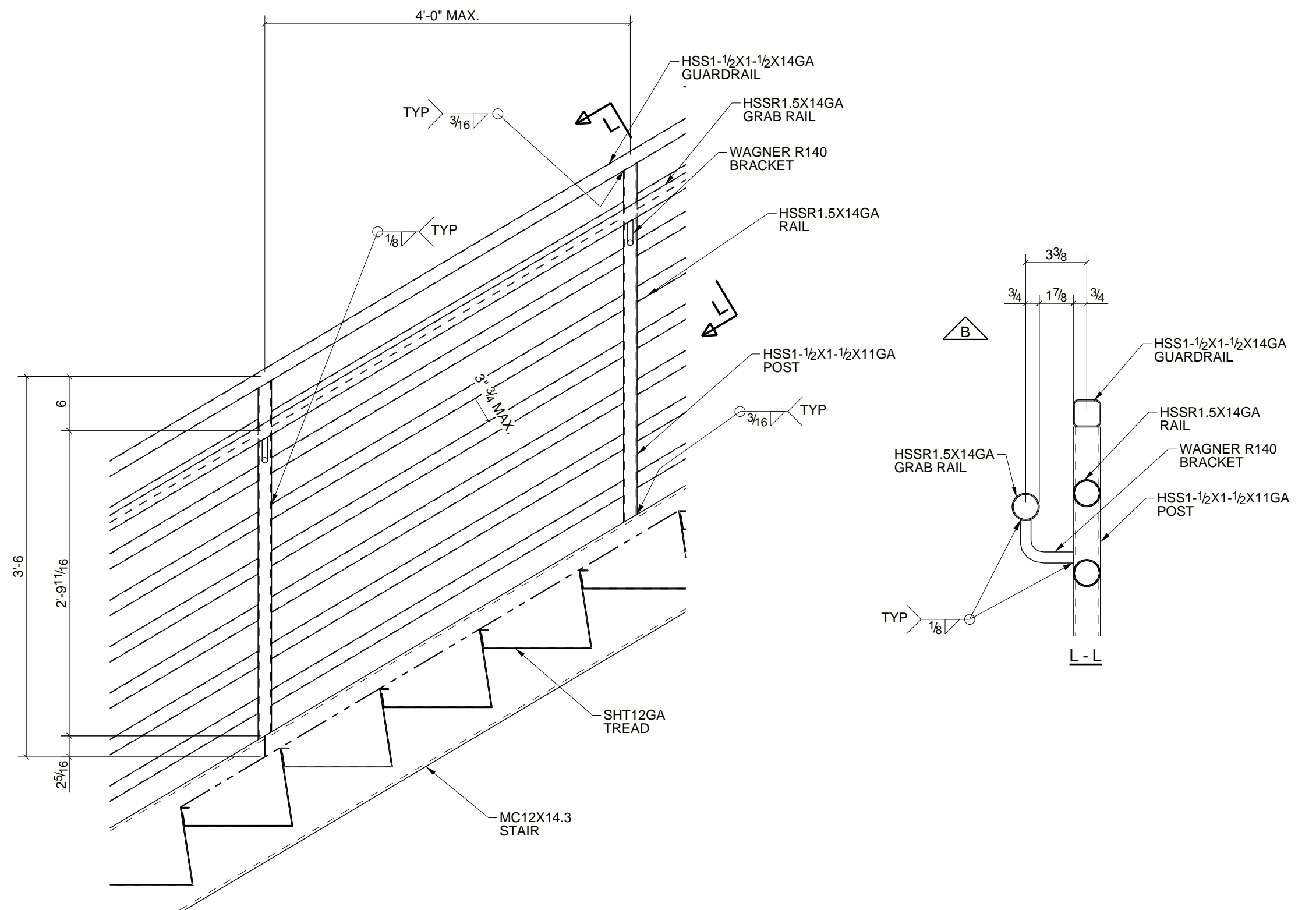
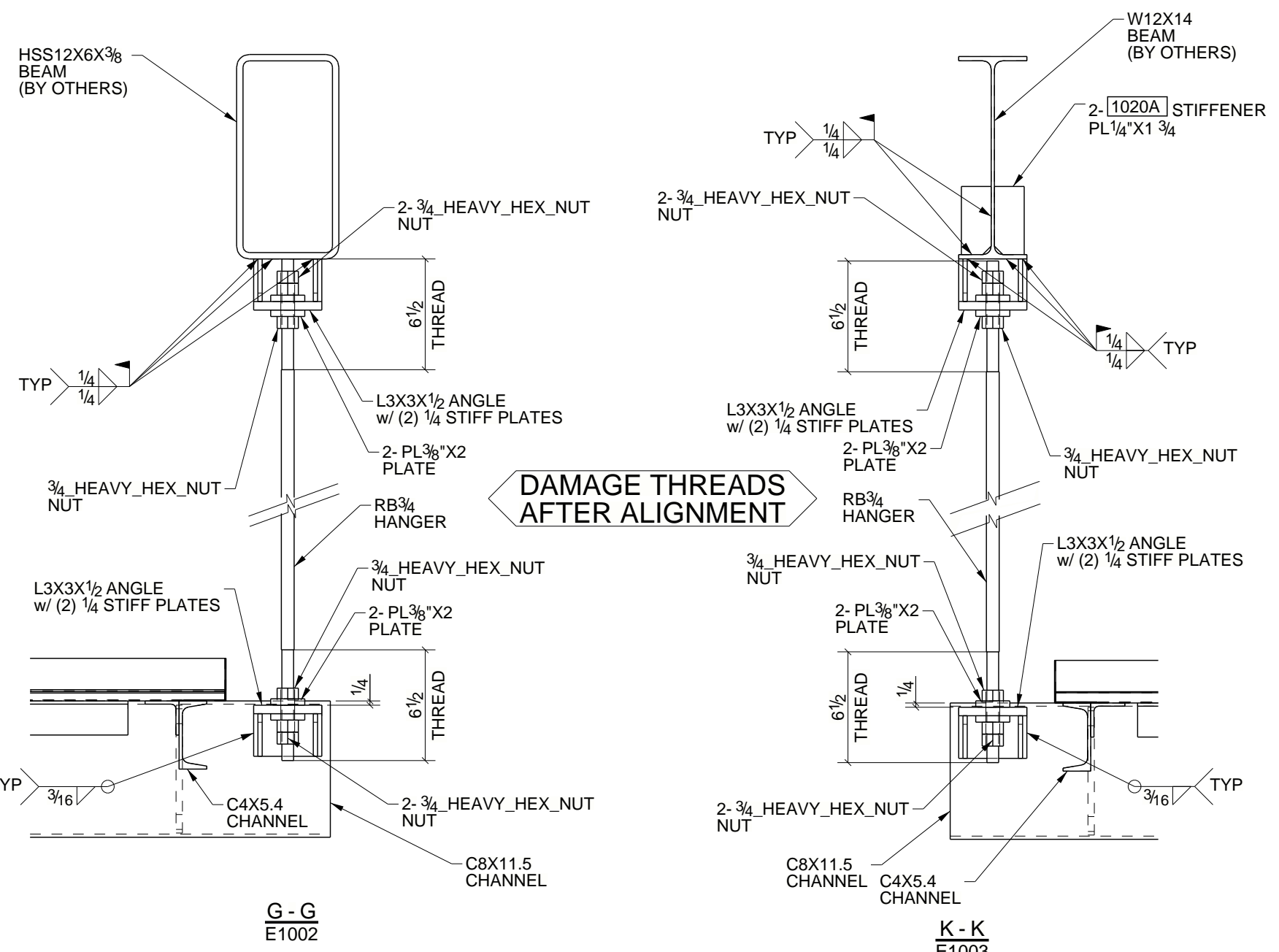
2 1/2 TOTAL CONCRETE DEPTH  
3000PSI MIN. (BY OTHERS) WITH  
WWF 6x6 AT MID DEPTH (BY OTHERS)



**DETAIL 7**  
E1002



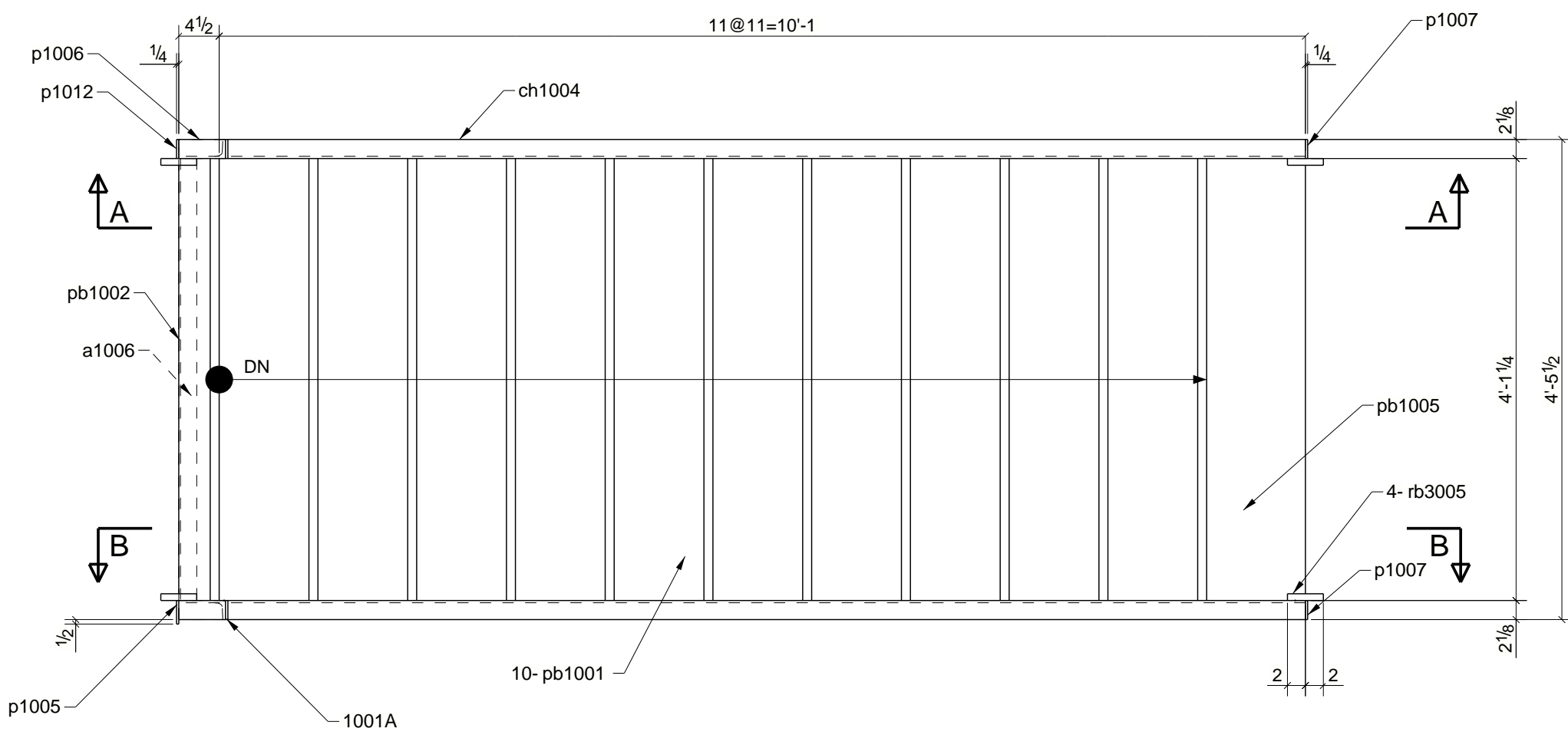
**DETAIL 8**  
E1003



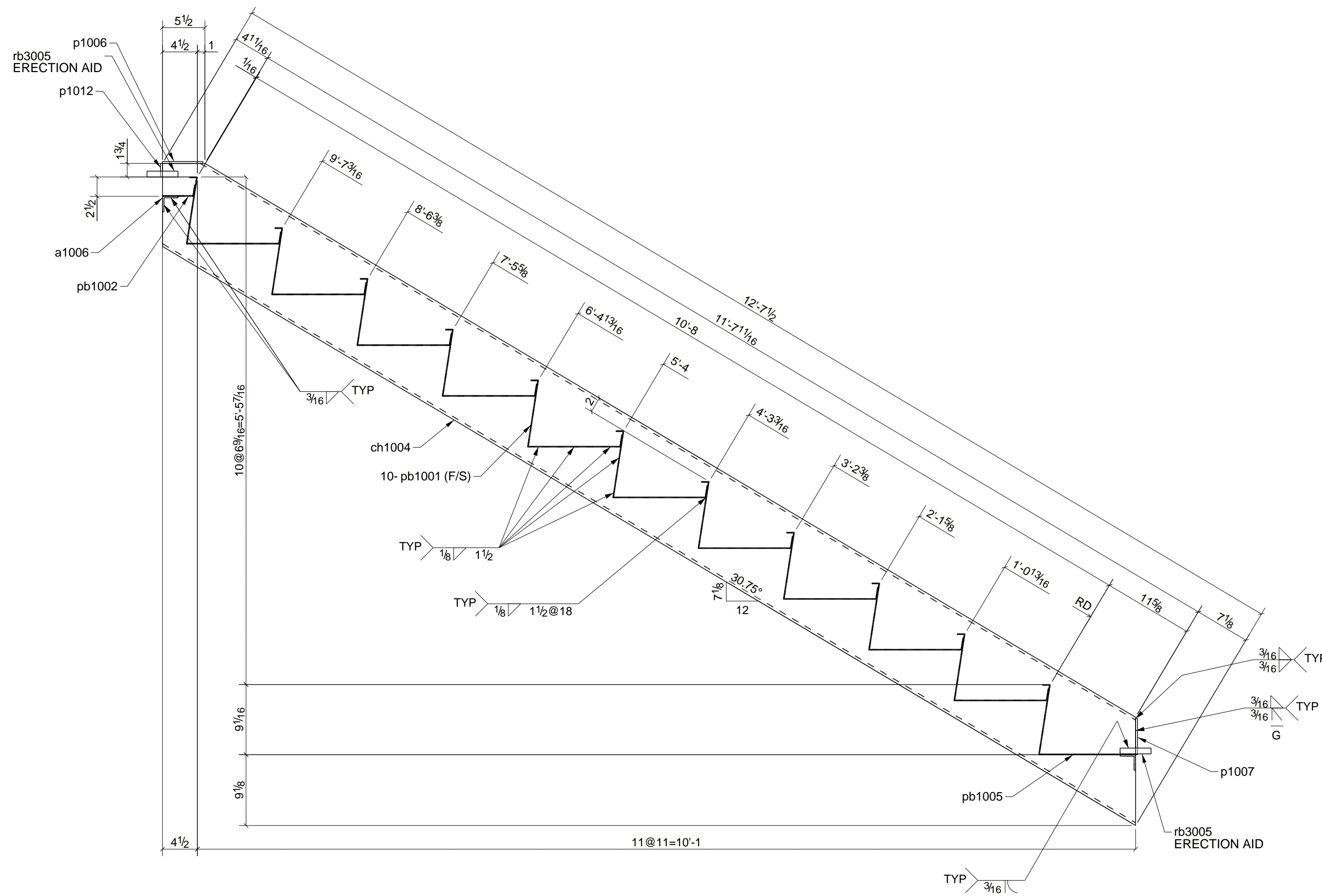
QTY.	SITE BOLTS	LENGTH	LOT #	QUANTITY
			1	2

# BILL OF MATERIAL

MARK	QTY	DESCRIPTION	LENGTH	WEIGHT	REMARKS
		<b>STAIRS</b>			
1001A	2	MC12X14.3	12'-7 1/2"	359	A36
a1006	4	L2X2X3/16	4'-1 1/4"	40	A36
ch1004	2	MC12X14.3	12'-7 1/2"	359	A36
p1005	2	PL1/4"X1 3/4"	0'-2 5/8"	1	A36
p1006	4	PL1/4"X2 1/8"	0'-5 3/16"	3	A36
p1007	4	PL1/4"X2 1/8"	0'-4 11/16"	3	A36
p1012	2	PL1/4"X1 3/4"	0'-2 1/8"	1	A36
pb1001	20	SHT12GAX22 11/16"	4'-1 1/4"	653	A36
pb1002	2	SHT12GAX5 5/16"	4'-1 1/4"	15	A36
pb1005	2	SHT12GAX22 3/16"	4'-1 1/4"	64	A36
rb3005	8	RB3/4"	0'-4"	4	A992
TOTAL WEIGHT THIS DRAWING				1502	



## 2 - STAIRS - 1001A



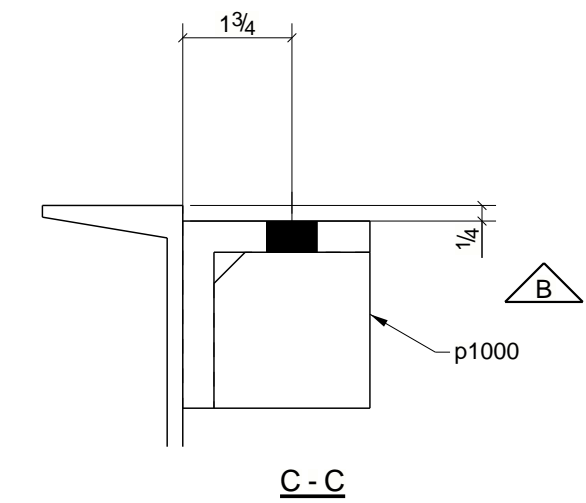
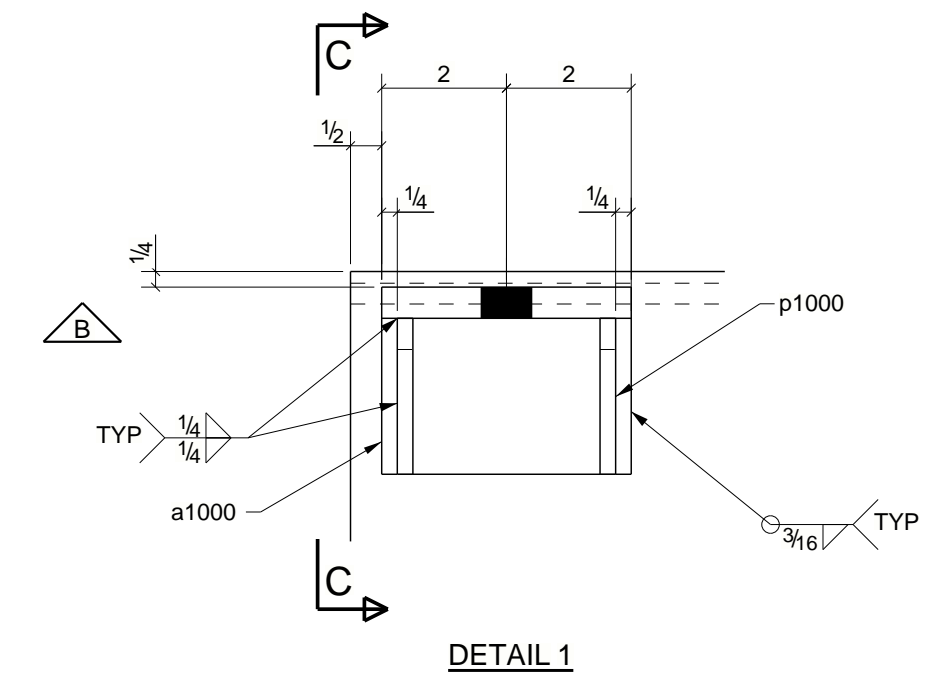
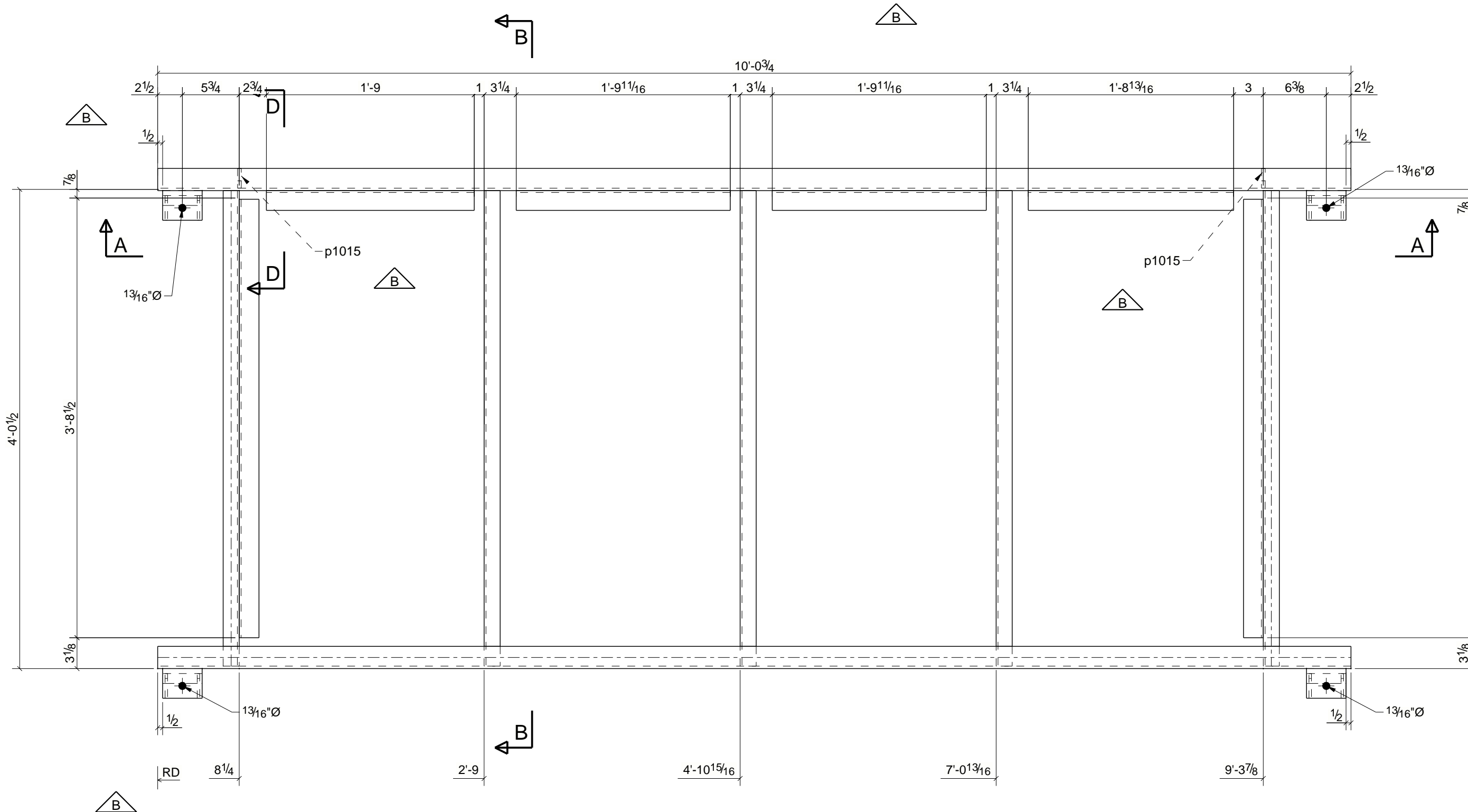
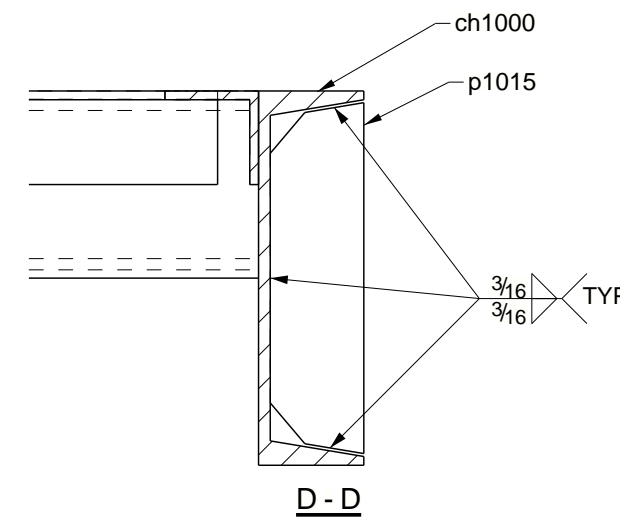
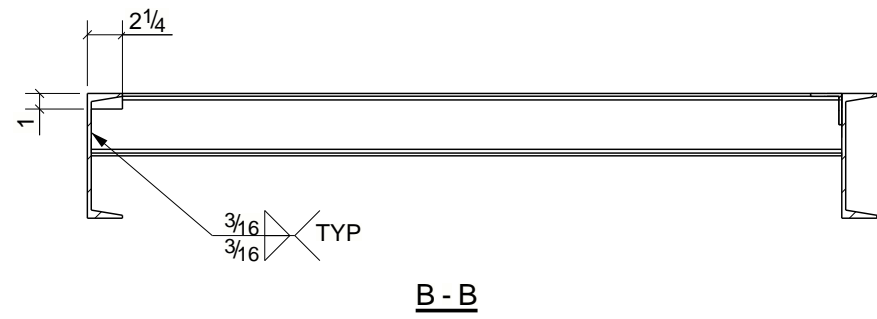
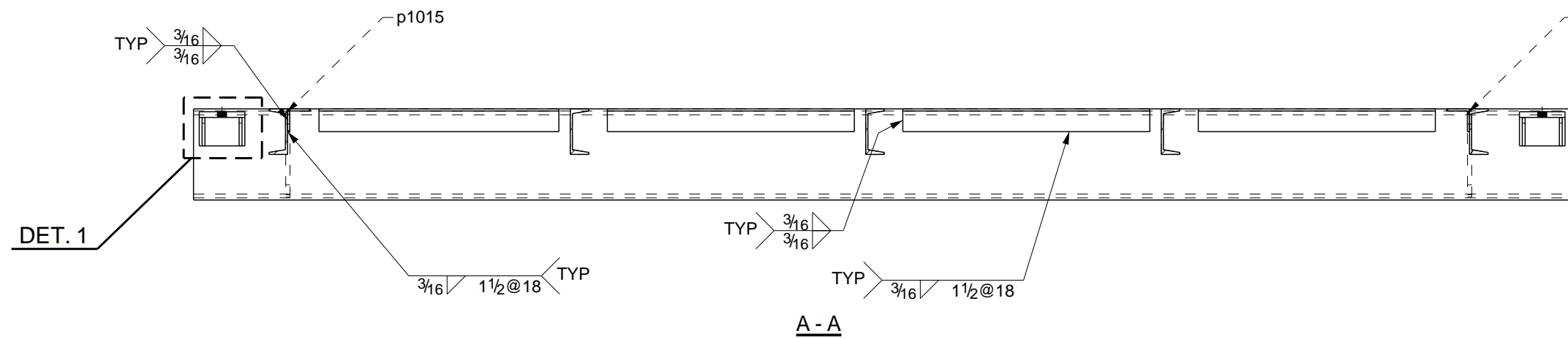
A-A (AS SHOWN)  
B-B (OPP HAND)



QTY.	SITE BOLTS	LENGTH	LOT #	QUANTITY
			1	3

# BILL OF MATERIAL

MARK	QTY	DESCRIPTION	LENGTH	WEIGHT	REMARKS
1003A	3	LANDINGS			
1003A	3	C8X11.5	10'-0 3/4"	346	A36
a1000	12	L3X3X1/2	0'-4"	38	A36
a1002	6	L2X2X3/16	3'-8 3/8"	54	A36
a1003	3	L2X2X3/16	1'-9"	13	A36
a1004	6	L2X2X3/16	1'-9 11/16"	26	A36
a1005	3	L2X2X3/16	1'-8 13/16"	13	A36
ch1000	3	C8X11.5	10'-0 3/4"	346	A36
ch1001	12	C4X5.4	4'-0 1/8"	259	A36
ch1009	3	C4X5.4	4'-0 1/8"	65	A36
p1000	24	PL1/4"X2 1/2"	0'-2 1/2"	10	A36
p1015	6	PL3/8"X2"	0'-7 1/2"	9	A36
TOTAL WEIGHT THIS DRAWING				1178	

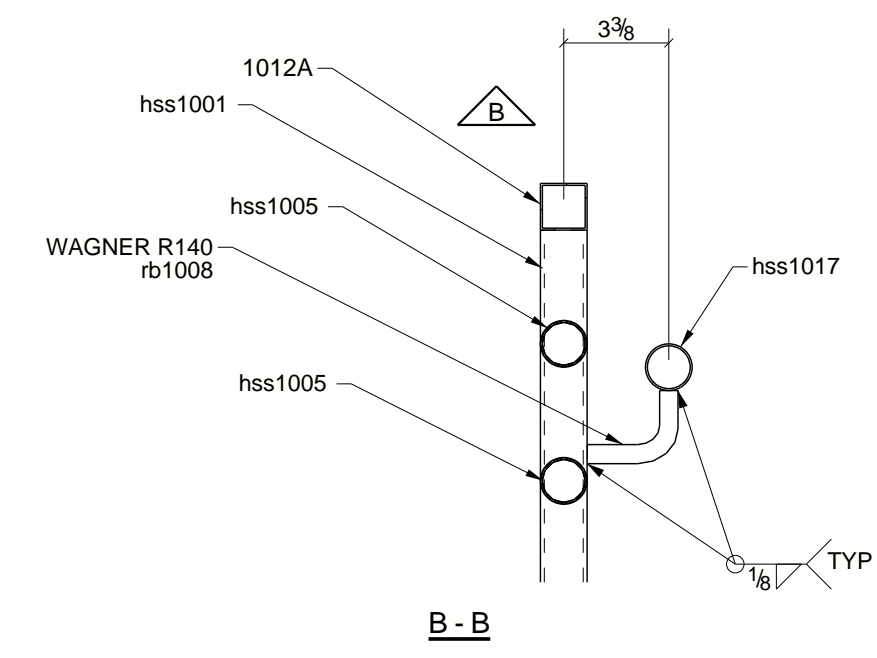
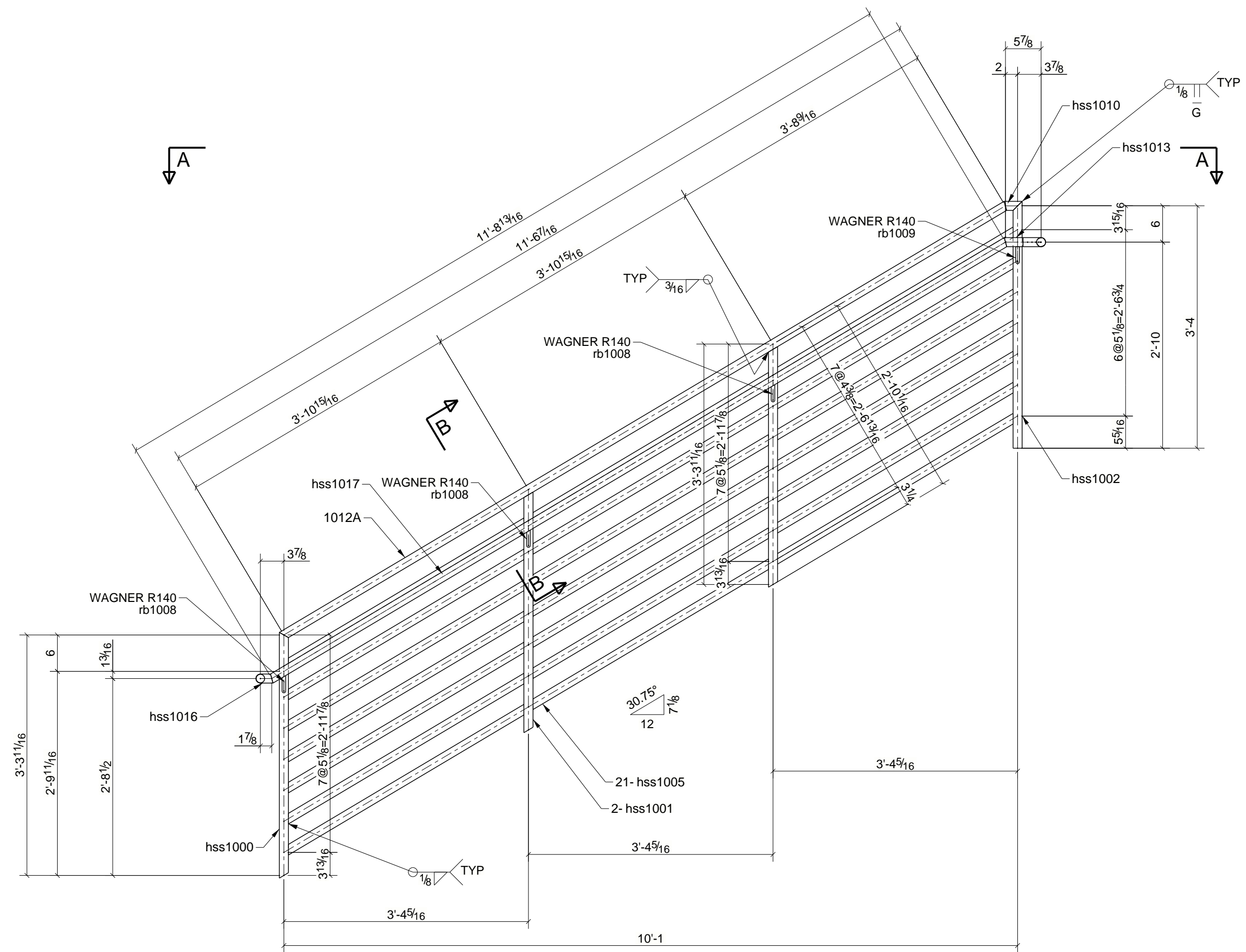
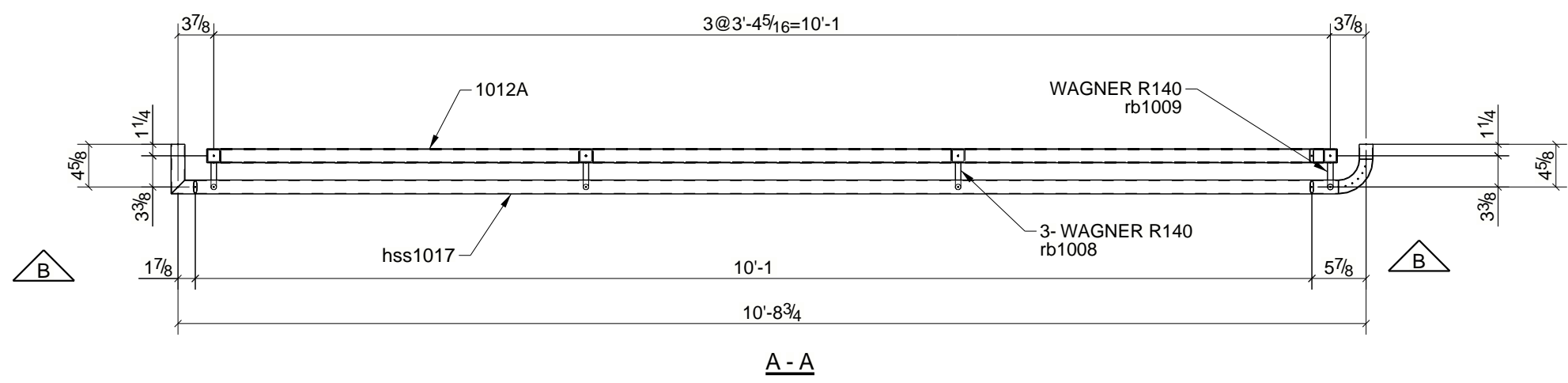


## 3 - LANDINGS - 1003A

QTY.	SITE BOLTS	LENGTH	LOT #	QUANTITY
			1	2

# BILL OF MATERIAL

MARK	QTY	DESCRIPTION	LENGTH	WEIGHT	REMARKS
1012A	2	GUARDRAILS			
1012A	2	HSS1-1/2X1-1/2X14GA	11'-7 1/16"	48	A500B
hss1000	2	HSS1-1/2X1-1/2X11GA	3'-4 9/16"	14	A500B
hss1001	4	HSS1-1/2X1-1/2X11GA	3'-3 11/16"	27	A500B
hss1002	2	HSS1-1/2X1-1/2X11GA	3'-4 3/4"	14	A500B
hss1005	42	HSSR1.5X14GA	3'-10 1/16"	339	A500B
hss1010	2	HSS1-1/2X1-1/2X14GA	0'-3"	1	A500B
hss1013	2	HSSR1.5X14GA	0'-3 1/16"	1	A500B
hss1016	2	HSSR1.5X14GA	0'-2 13/16"	1	A500B
hss1017	2	HSSR1.5X14GA	11'-9 3/16"	49	A500B
hss1025	2	HSSR1.5X14GA	0'-5 3/8"	2	A500B
hss1026	2	HSSR1.5X14GA	0'-1 5/8"	1	A500B
m1002	2	HSSR1.5X14GA	0'-4 11/16"	2	A500B
rb1008	6	WAGNER R140 BOI		2	A36
rb1009	2	WAGNER R140 BOI		1	A36
TOTAL WEIGHT THIS DRAWING				502	



## 2 - GUARDRAILS - 1012A