

E

D1

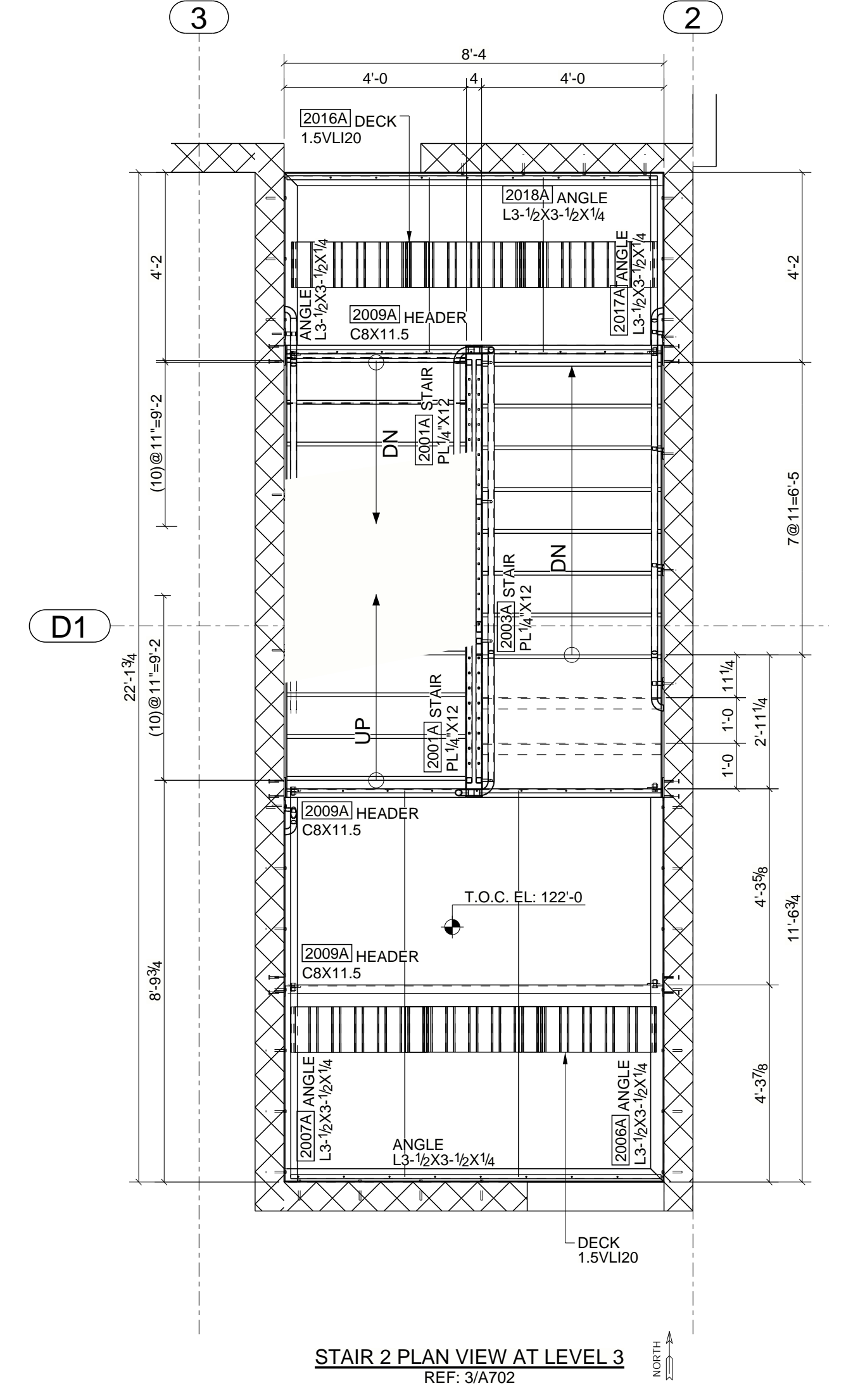
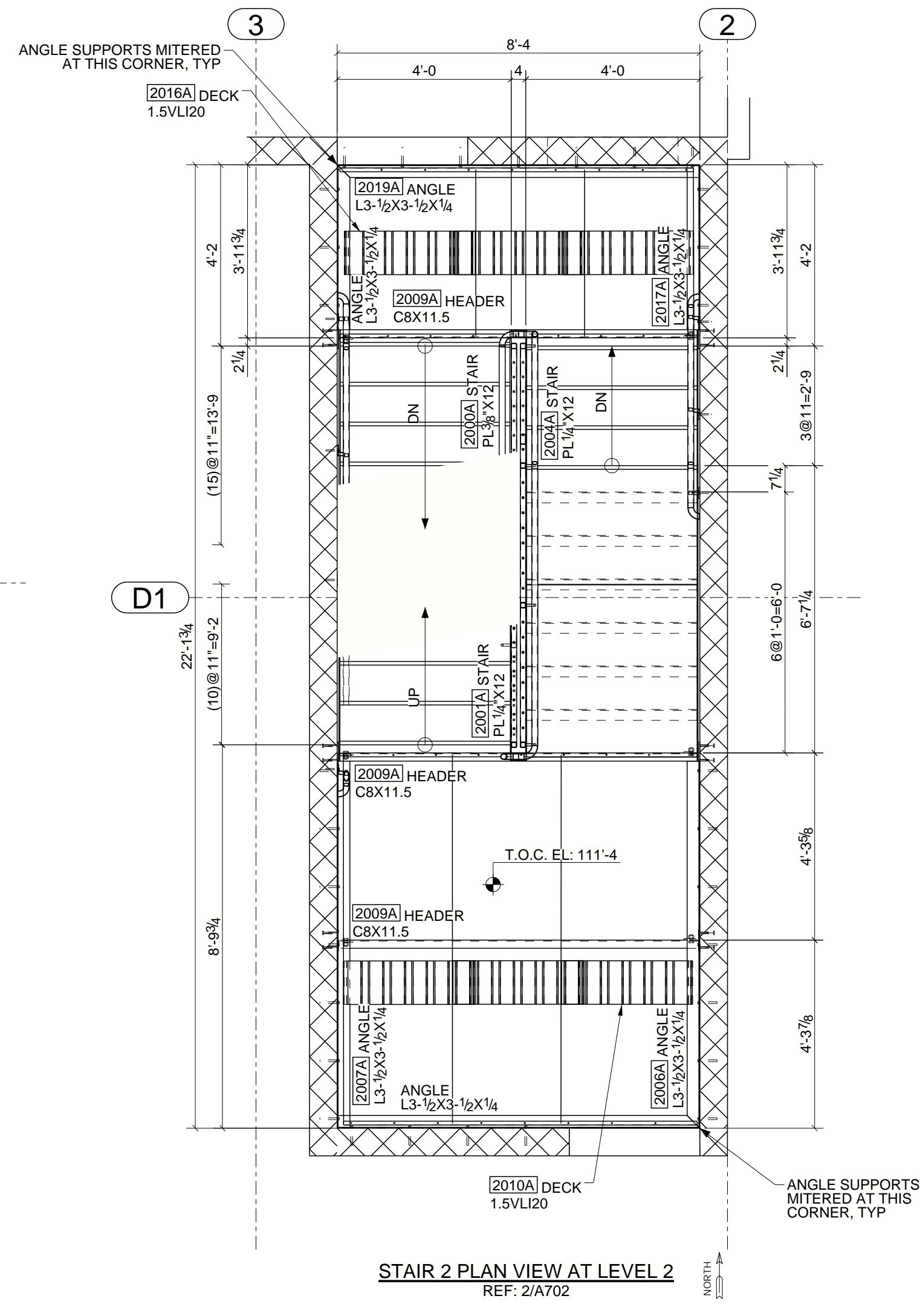
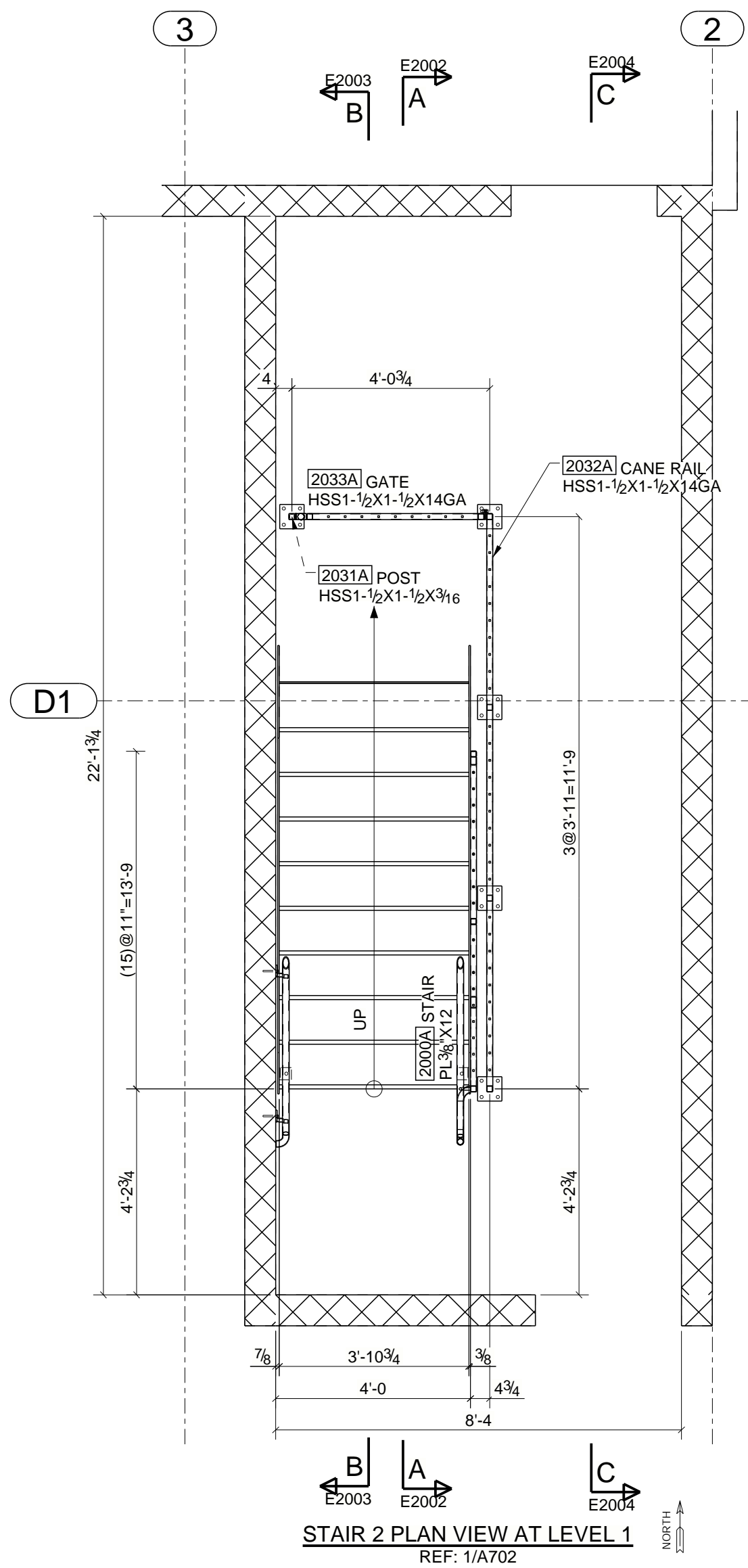
D

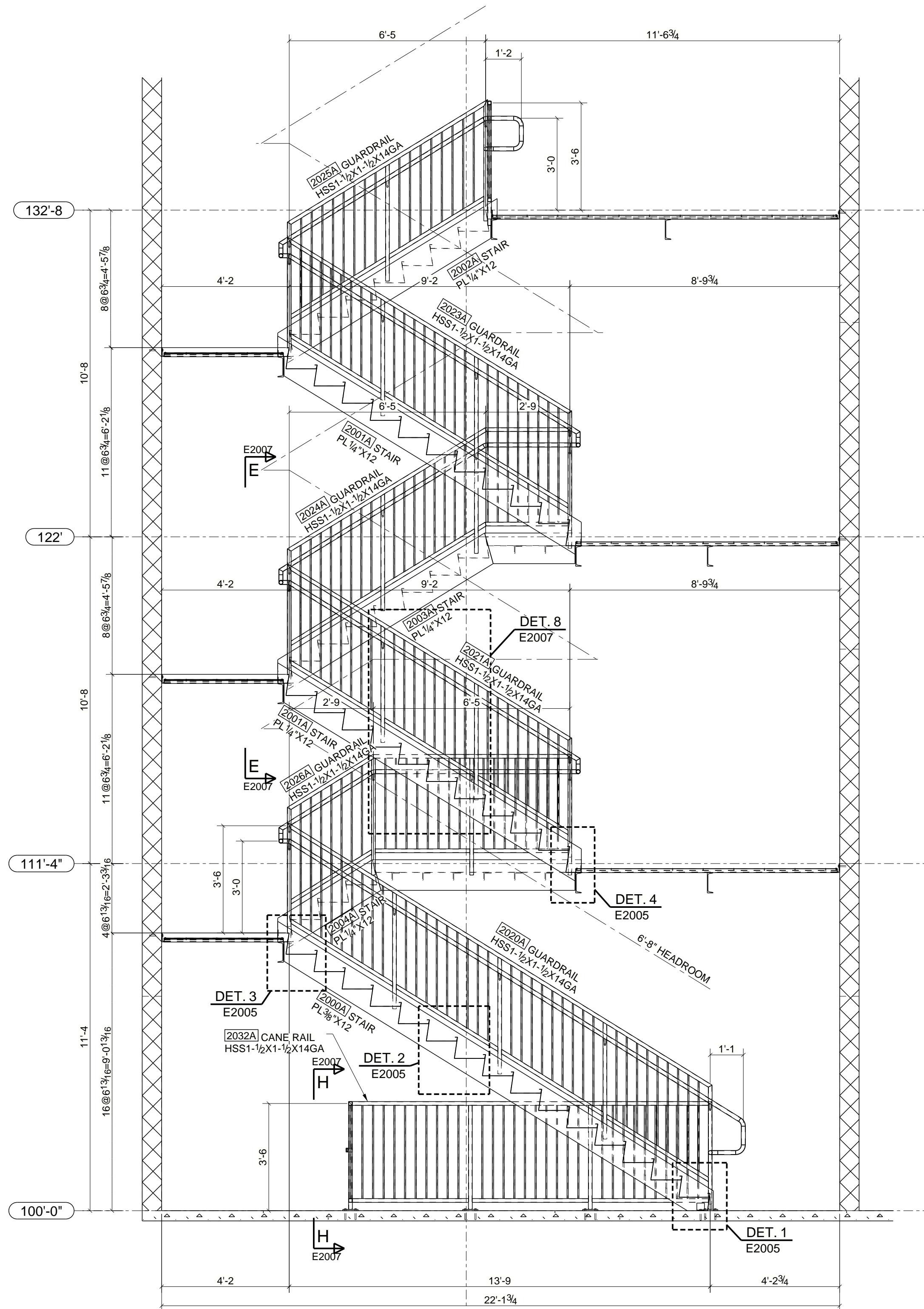
2

3

NORTH  
←

STAIR 2 ISOMETRIC VIEW



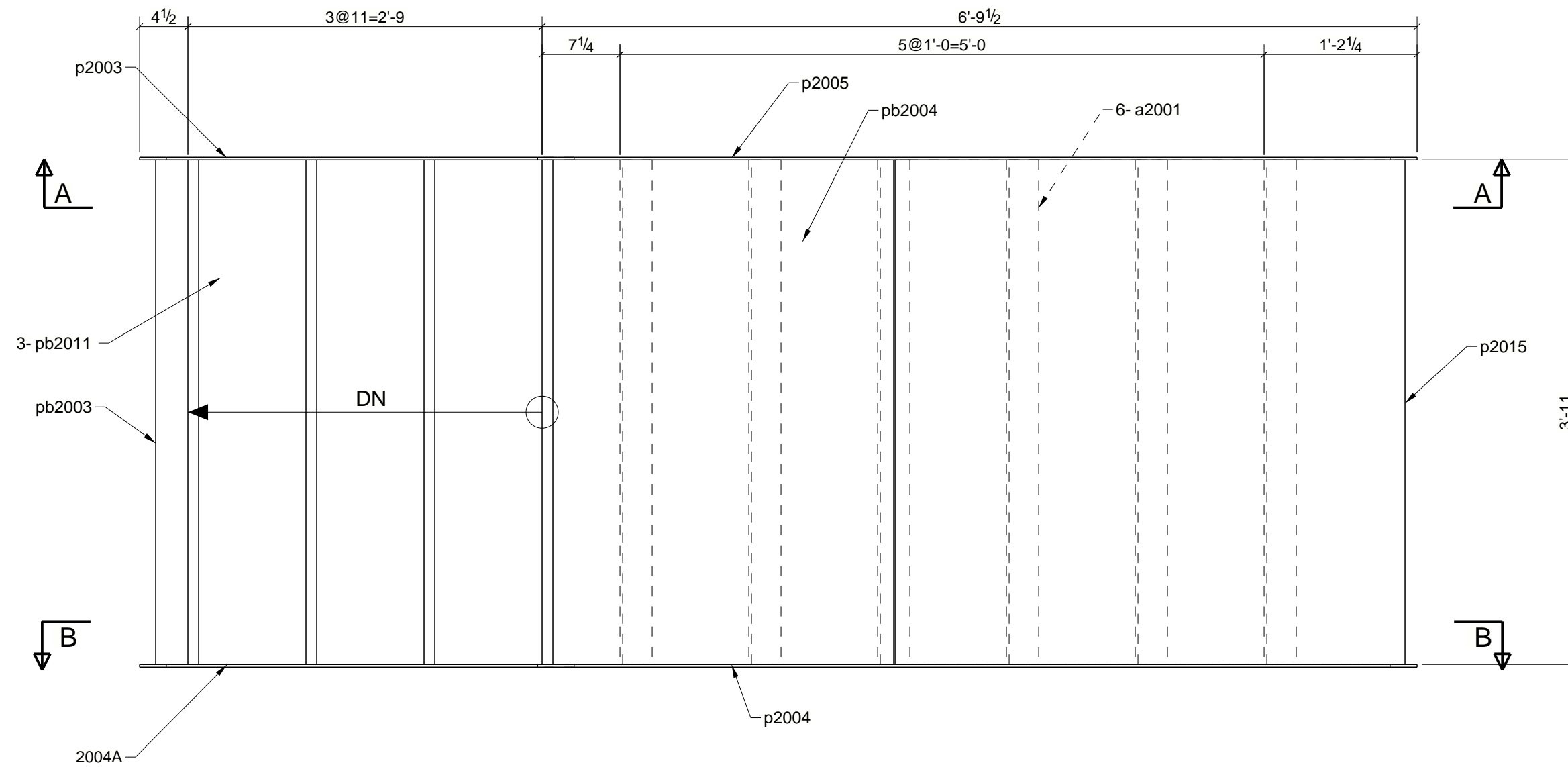


D1  
SECTION A - A  
E2000

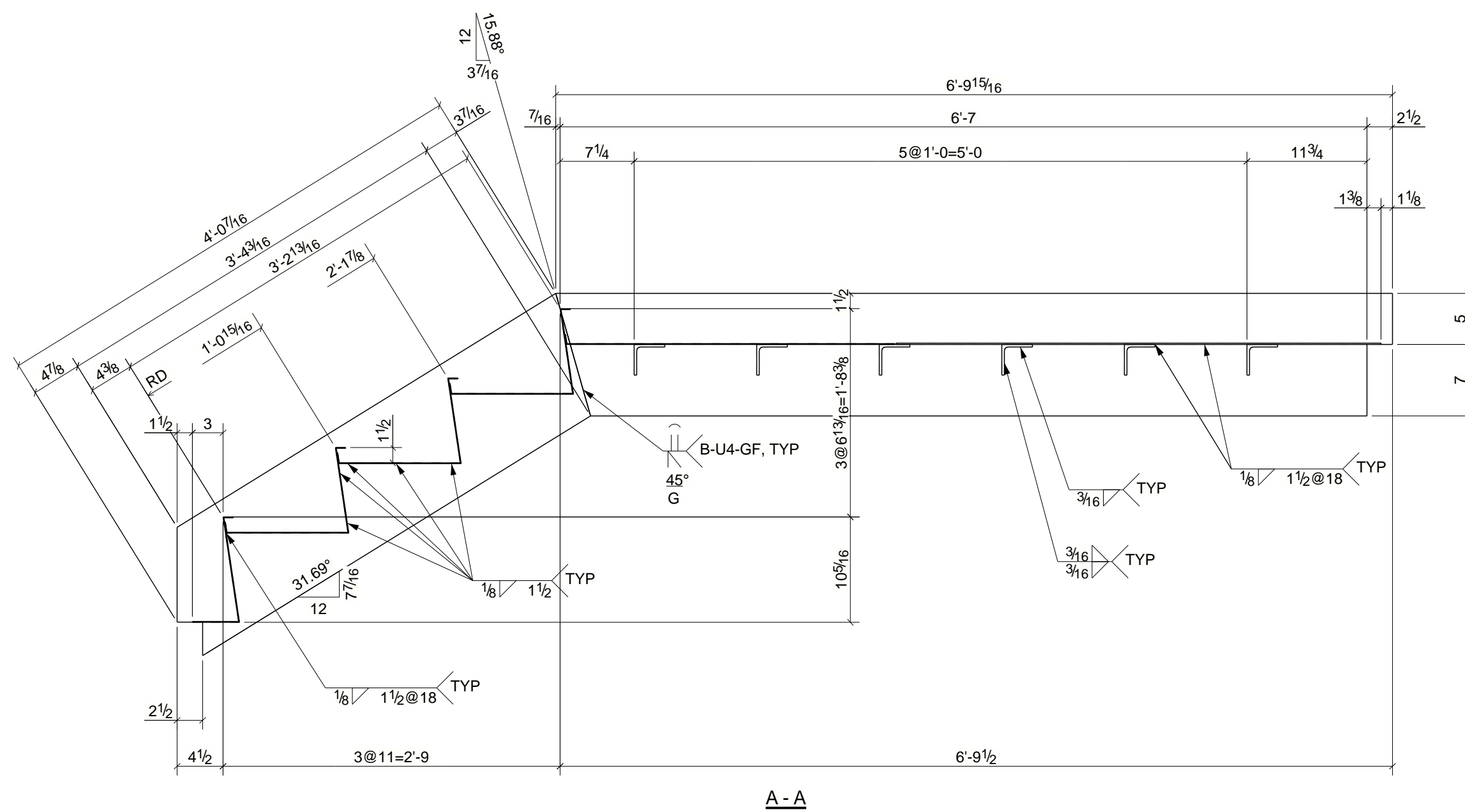
QTY.	SITE BOLTS	LENGTH	LOT #	QUANTITY
			100	1

# BILL OF MATERIAL

MARK	QTY	DESCRIPTION	LENGTH	WEIGHT	REMARKS
2004A	1	STAIR			
2004A	1	PL1/4"X12"	4'-0 7/16"	38	A36
a2001	6	L3X3X1/4	3'-11"	115	A36
p2003	1	PL1/4"X12"	4'-0 7/16"	38	A36
p2004	1	PL1/4"X12"	6'-9 15/16"	67	A36
p2005	1	PL1/4"X12"	6'-9 15/16"	67	A36
p2015	1	SHT10GAX47"	3'-11 1/2"	79	A36
pb2003	1	SHT14GAX15 11/16"	3'-11"	17	A36
pb2004	1	SHT10GAX33"	3'-11"	34	A36
pb2011	3	SHT14GAX22 1/16"	3'-11"	70	A36
TOTAL WEIGHT THIS DRAWING				525	



**ONE - STAIR - 2004A**

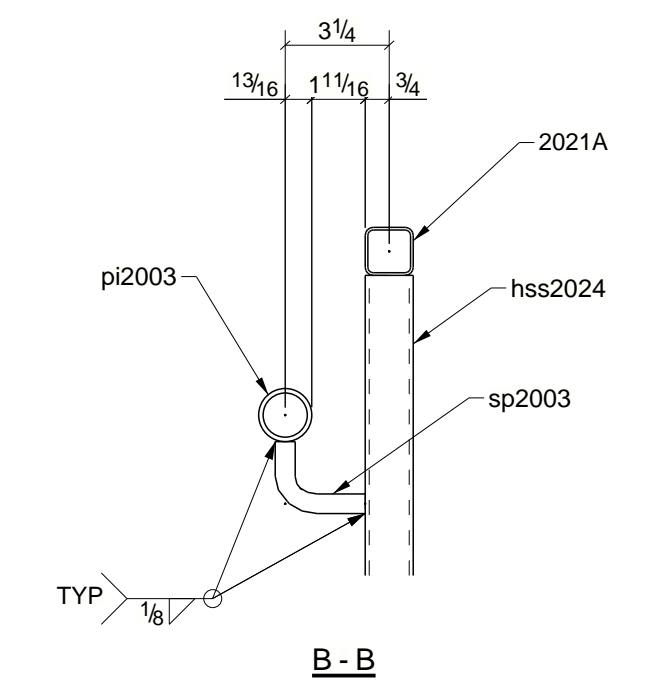
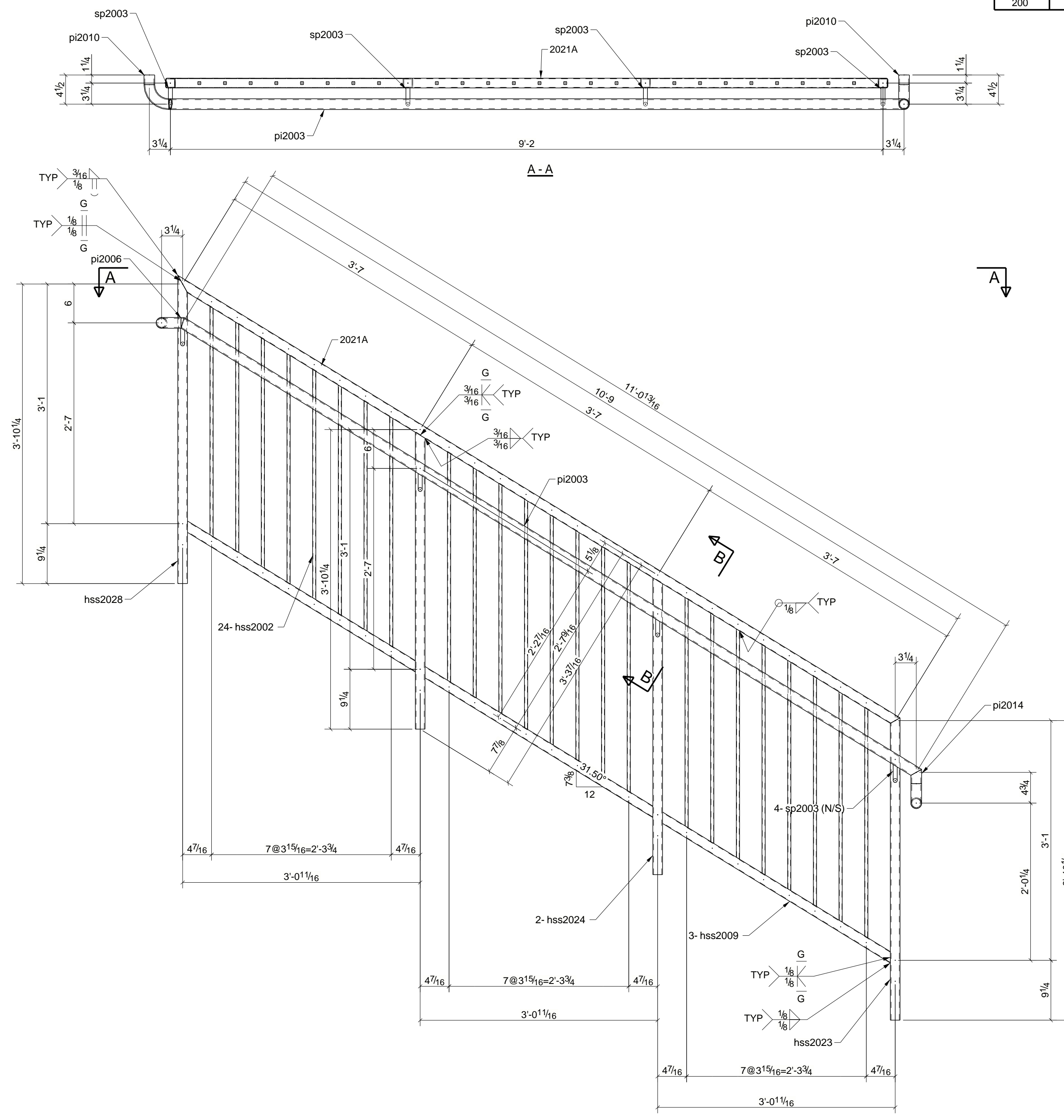


**A - A**

QTY.	SITE BOLTS	LENGTH	LOT #	QUANTITY
			200	1

# BILL OF MATERIAL

MARK	QTY	DESCRIPTION	LENGTH	WEIGHT	REMARKS
2021A	1	GUARDRAIL			
2021A	1	HSS1-1/2X1-1/2X14GA	10'-10 3/4"	23	A500B
hss2002	24	HSS1/2X1-1/2X16GA	2'-11 9/16"	148	A500B
hss2009	3	HSS1-1/2X1-1/2X14GA	3'-6 3/16"	22	A500B
hss2023	1	HSS1-1/2X1-1/2X11GA	3'-10 11/16"	8	A500B
hss2024	2	HSS1-1/2X1-1/2X11GA	3'-9 13/16"	16	A500B
hss2028	1	HSS1-1/2X1-1/2X11GA	3'-11 9/16"	8	A500B
m2000	2	PIPE1-1/4SCH40	0'-4 11/16"	2	A500
pi2003	1	PIPE1-1/4SCH40	11'-1 1/2"	24	A500
pi2006	1	PIPE1-1/4SCH40	0'-0 1/2"	0	A500
pi2010	2	PIPE1-1/4SCH40	0'-1 1/2"	1	A500
pi2014	1	PIPE1-1/4SCH40	0'-2 3/16"	0	A500
sp2003	4	WAGNER R140	BOI	1	A36
TOTAL WEIGHT THIS DRAWING				252	



**ONE - GUARDRAIL - 2021A**