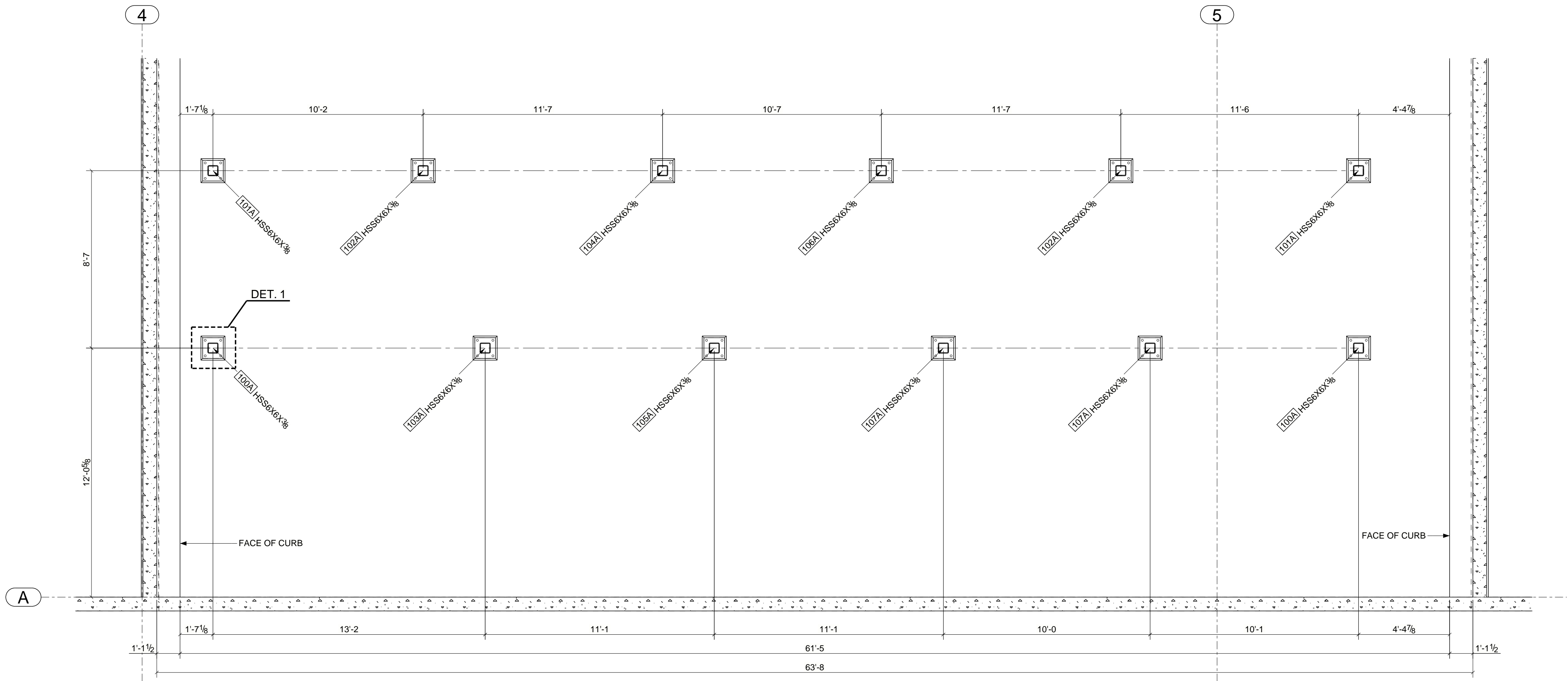
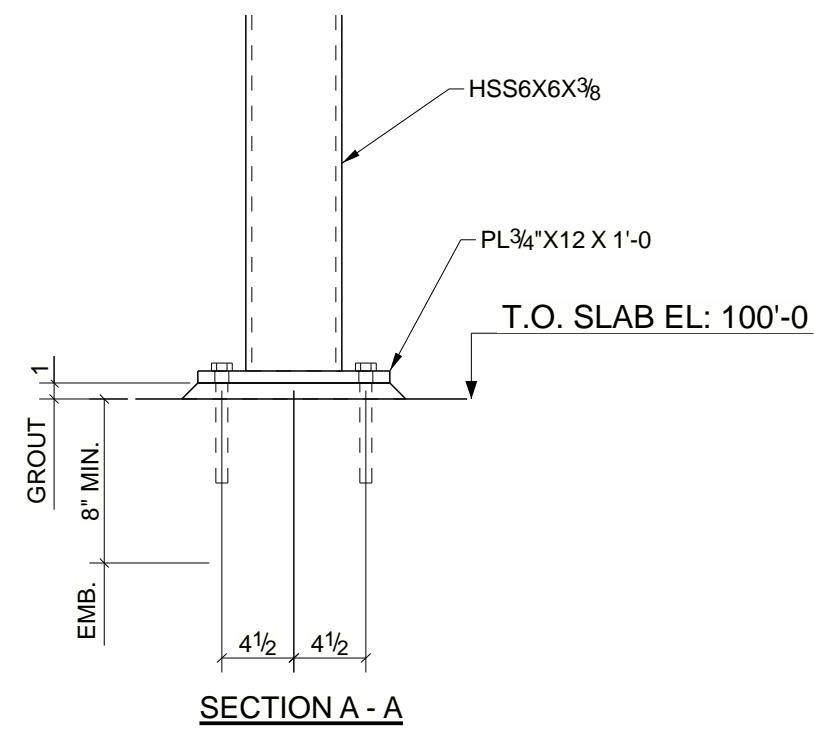
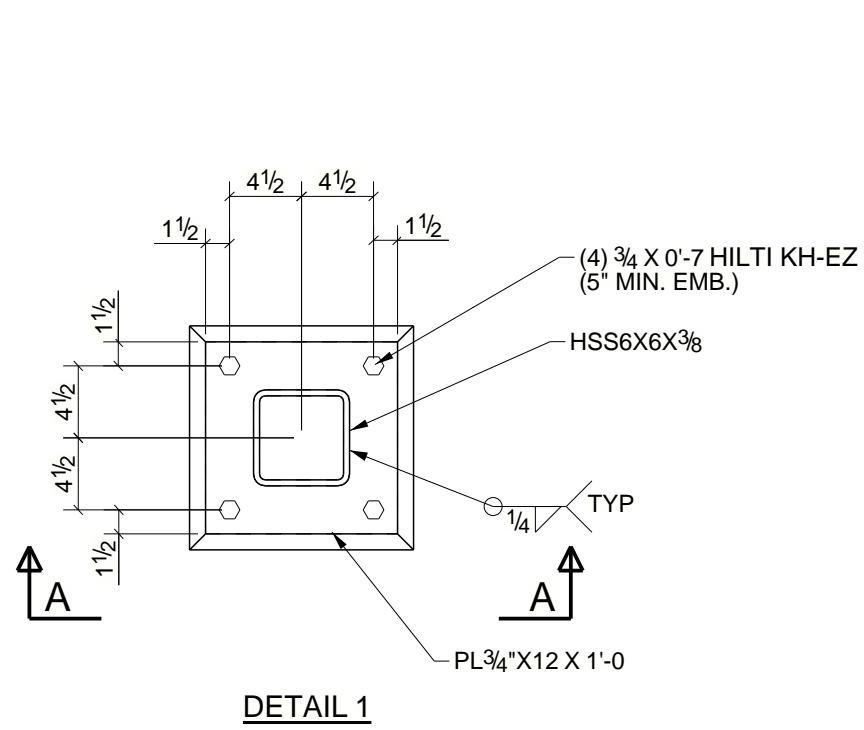
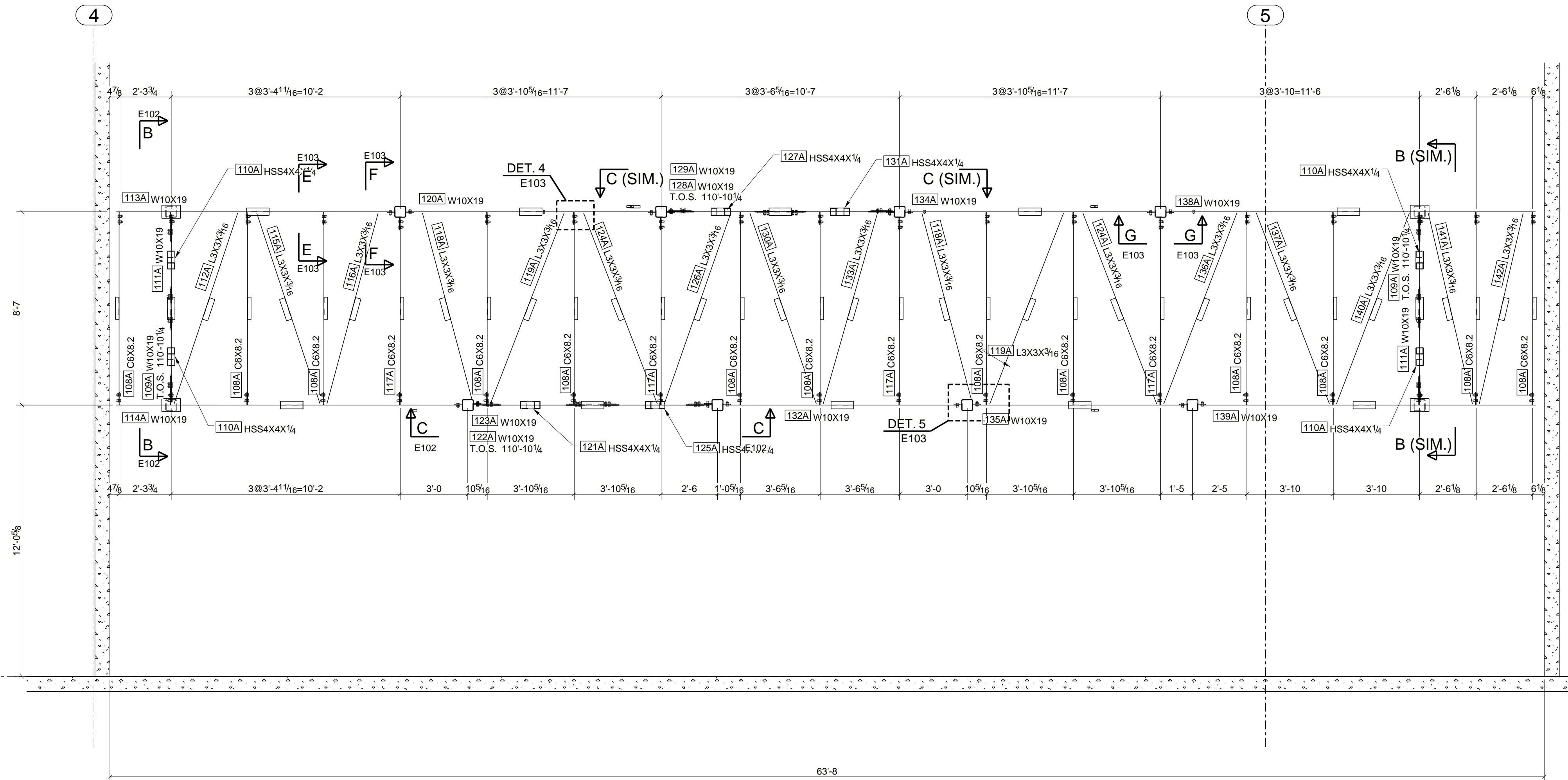


209 CATWALK ISOMETRIC



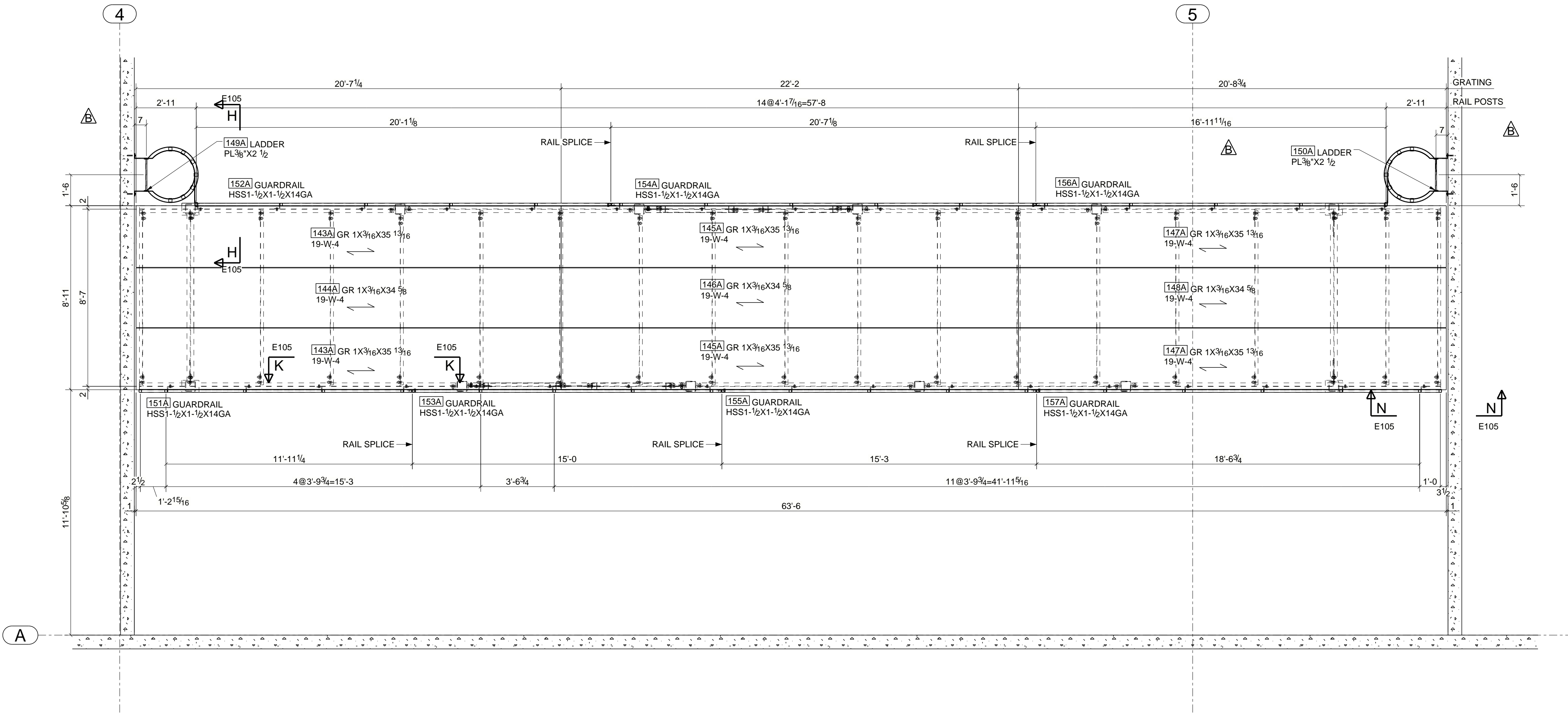
209 CATWALK COLUMN PLAN
REF: 1/S1.2





209 CATWALK FRAMING PLAN
REF: 1/S1.2

- NOTES:
 1) TOP OF STEEL EL. = 117'-11" U.N.O.
 2) TOP OF GRATING (NOT SHOWN) EL. = 118'-0"
 3) SEE E104 FOR GRATING, LADDERS, AND GUARDRAIL

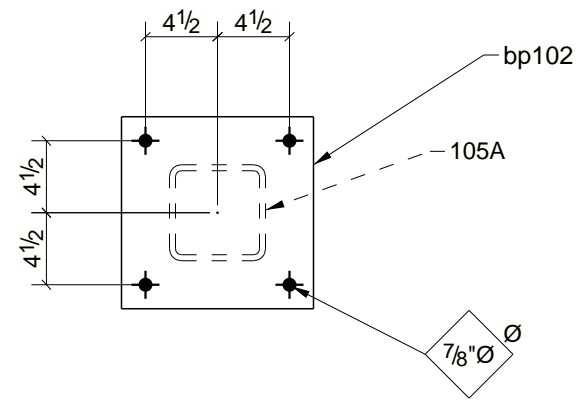


209 CATWALK PLAN VIEW
 REF: 1/S1.2

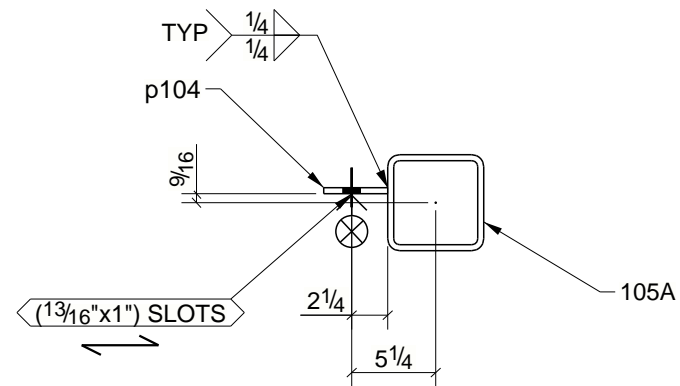
QTY.	SITE BOLTS	LENGTH	LOT #	QUANTITY
4	3/4"Ø HILTI KH-EZ	7"	1	1
3	3/4"Ø A325N	2"		

BILL OF MATERIAL

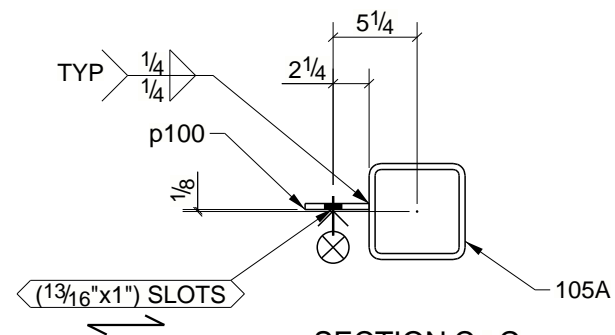
MARK	QTY	DESCRIPTION	LENGTH	WEIGHT	REMARKS
105A	1	COLUMN			
105A	1	HSS6X6X3/8	17'-9"	458	A500B
bp102	1	PL3/4"X12"	1'-0"	31	A36
p100	3	PL3/8"X4"	0'-6"	8	A36
p104	1	PL3/8"X4"	0'-9"	4	A36
p115	1	PL1/4"X5 5/8"	0'-5 5/8"	2	A36
TOTAL WEIGHT THIS DRAWING				502	



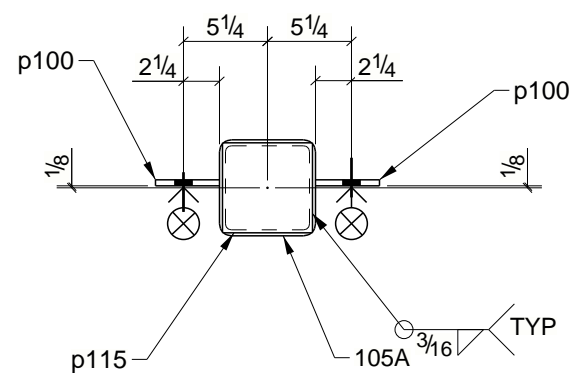
SECTION A - A



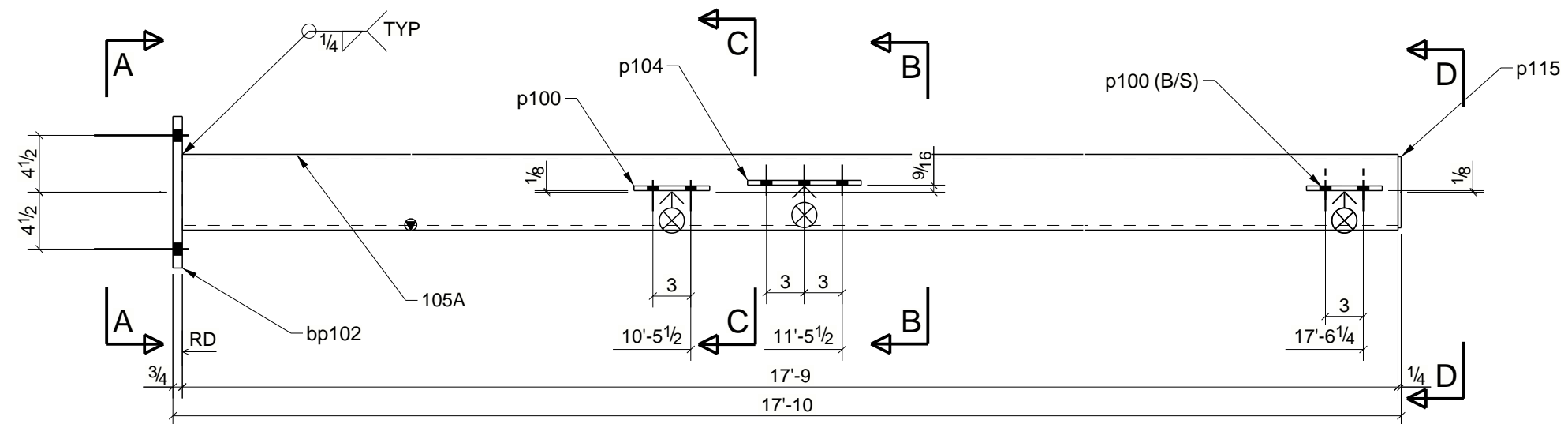
SECTION B - B



SECTION C - C



SECTION D - D

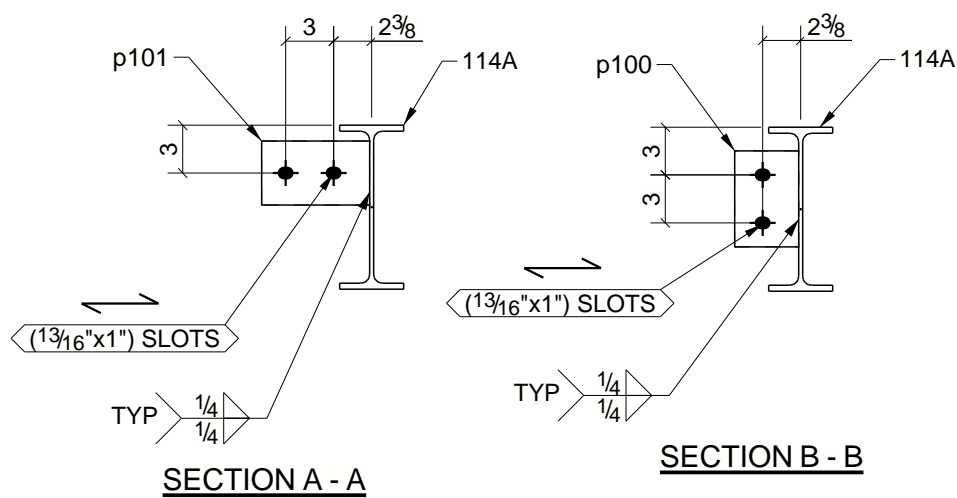
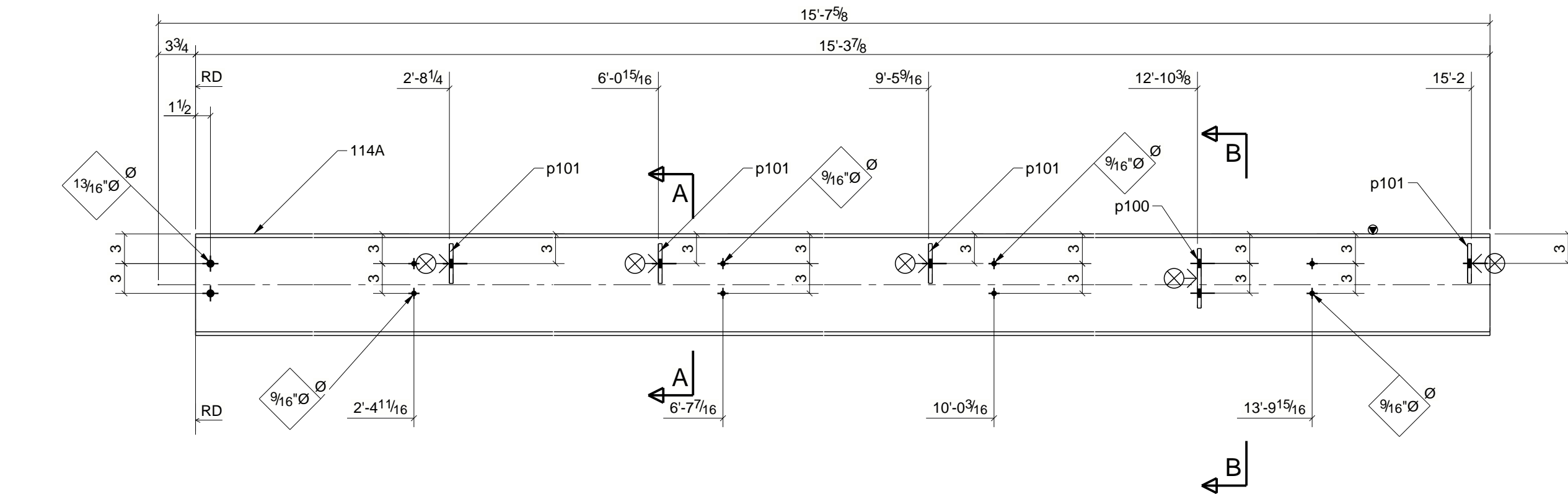


ONE - COLUMN - 105A

QTY.	SITE BOLTS	LENGTH	LOT #	QUANTITY
2	3/4"Ø A325N	2"	1	1

BILL OF MATERIAL

MARK	QTY	DESCRIPTION	LENGTH	WEIGHT	REMARKS
114A	1	BEAM			
114A	1	W10X19	15'-3 7/8"	293	A992
p100	1	PL3/8"X4"	0'-6"	3	A36
p101	4	PL3/8"X4"	0'-6 3/4"	11	A36
TOTAL WEIGHT THIS DRAWING				307	

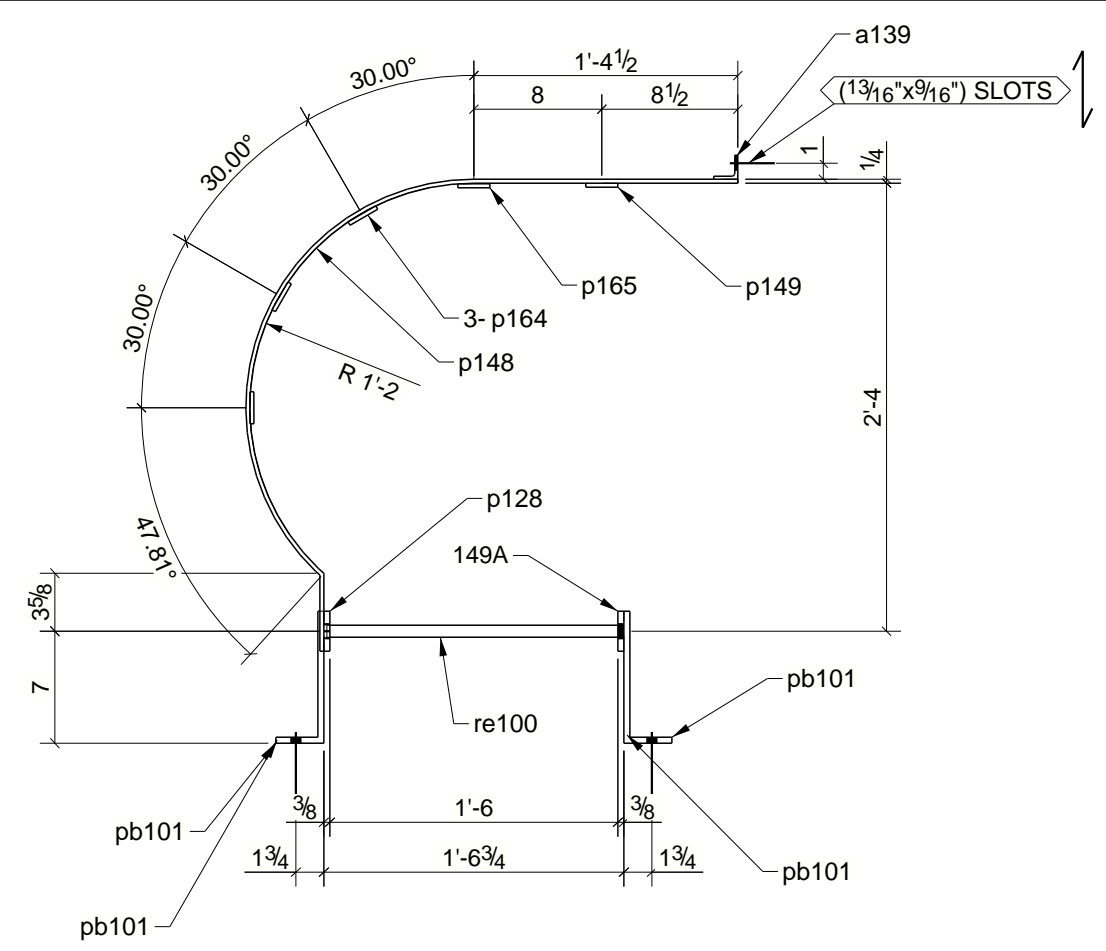


ONE - BEAM - 114A

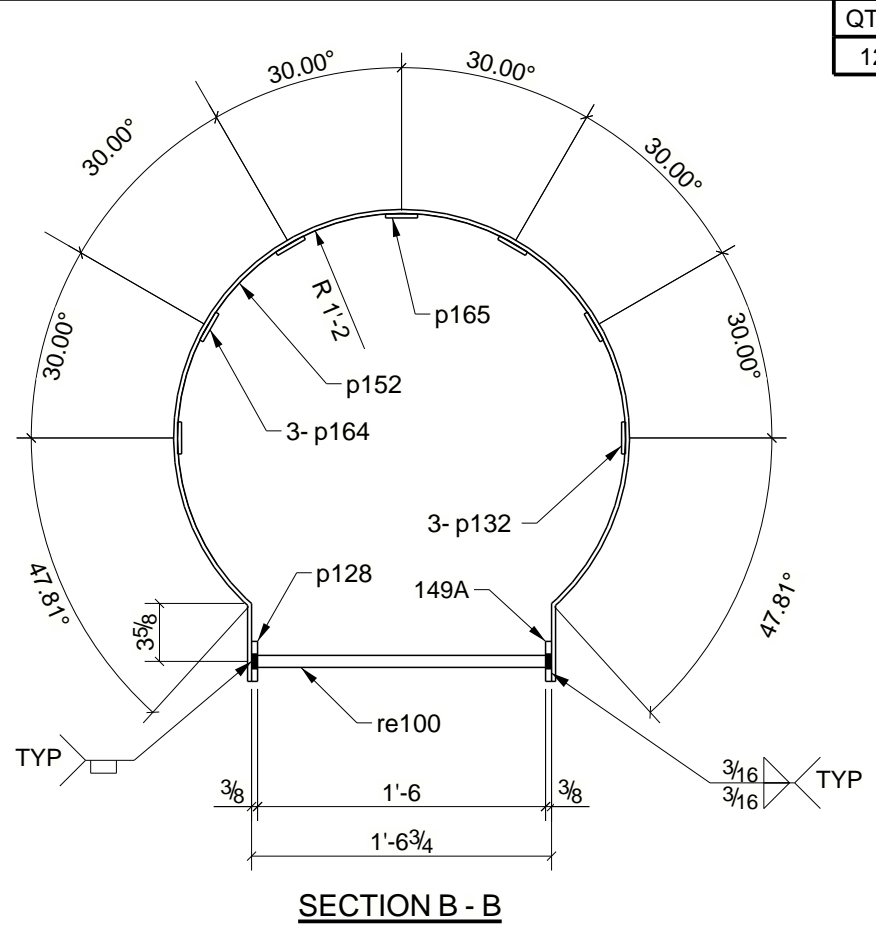
QTY.	SITE BOLTS	LENGTH	LOT #	QUANTITY
12	1/2"Ø HILTI KH-EZ	4 1/2"	1	1

BILL OF MATERIAL

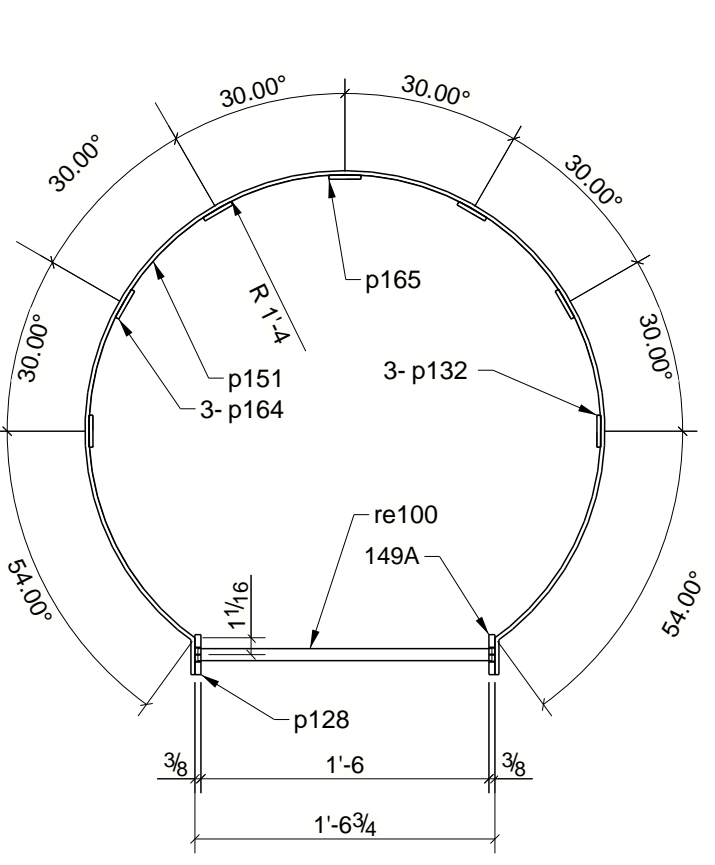
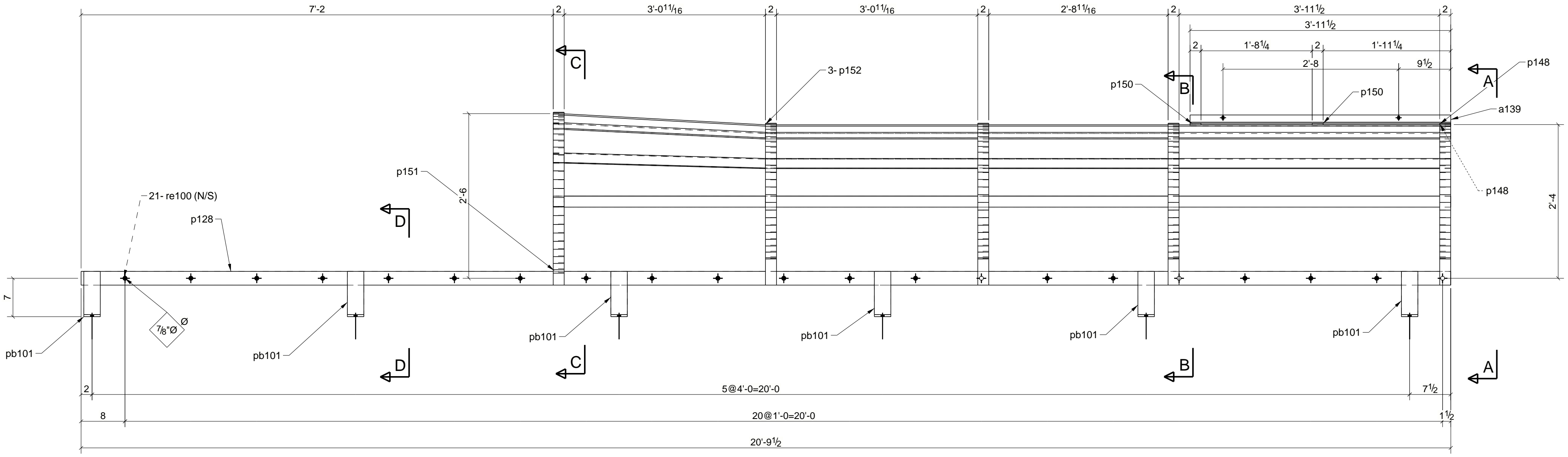
MARK	QTY	DESCRIPTION	LENGTH	WEIGHT	REMARKS
149A	1	LADDER			
149A	1	PL3/8"X2 1/2"	20'-9 1/2"	66	A36
a139	1	L1-1/2X1-1/2X3/16	3'-11 1/2"	7	A36
p128	1	PL3/8"X2 1/2"	20'-9 1/2"	66	A36
p132	3	PL1/4"X2"	9'-6 1/16"	49	A36
p148	1	PL1/4"X2"	4'-6 13/16"	8	A36
p149	1	PL1/4"X2"	3'-11 1/2"	7	A36
p150	2	PL1/4"X2"	1'-5 1/2"	5	A36
p151	1	PL1/4"X2"	7'-0 9/16"	12	A36
p152	3	PL1/4"X2"	6'-4 11/16"	33	A36
p164	3	PL1/4"X2"	13'-7 9/16"	70	A36
p165	1	PL1/4"X2"	13'-7 9/16"	23	A36
pb101	12	PL3/8"X3"	0'-10 1/2"	42	A36
re100	21	RE #6	1'-6 3/8"	0	A706
TOTAL WEIGHT THIS DRAWING				387	



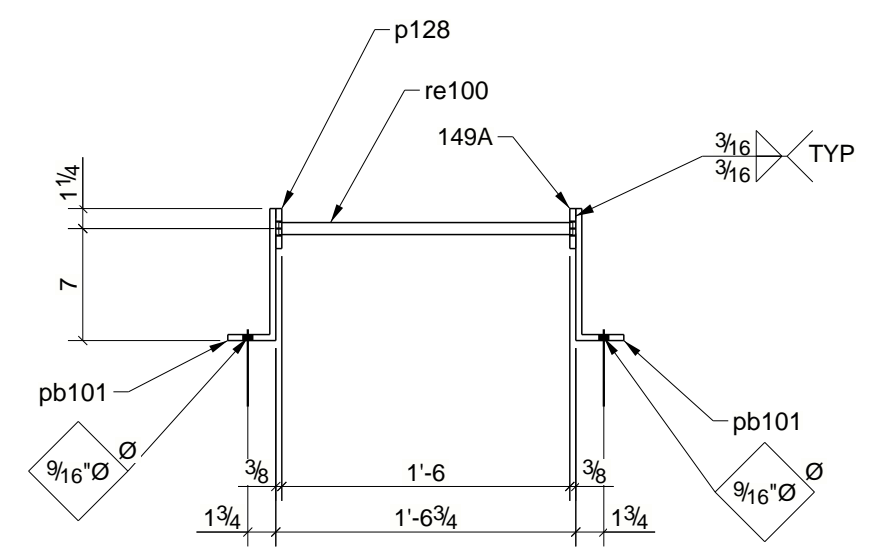
SECTION A - A



SECTION B - B



SECTION C - C



SECTION D - D

ONE - LADDER - 149A

QTY.	SITE BOLTS	LENGTH	LOT #	QUANTITY
2	1/2"Ø A325N	1 1/4"	1	1
8	1/2"Ø A325N	1 1/2"		

BILL OF MATERIAL

MARK	QTY	DESCRIPTION	LENGTH	WEIGHT	REMARKS
155A	1	GUARDRAIL			
155A	1	HSS1-1/2X1-1/2X14GA	15'-3"	32	A500B
a117	4	L3X3X3/8	0'-6"	14	A36
hss111	1	HSS1-1/2X1-1/2X14GA	0'-5 1/4"	1	A500B
hss121	3	HSS1-1/2X1-1/2X14GA	3'-8 1/4"	23	A500B
hss123	1	HSS1-1/2X1-1/2X14GA	3'-3"	7	A500B
hss127	4	HSS1-1/2X1-1/2X11GA	4'-1 5/8"	34	A500B
p125	1	PL1/4"X4"	15'-3"	52	A36
p127	1	PL1/4"X4"	0'-6"	2	A36
p133	4	PL1/8"X1 1/2"	0'-1 1/2"	0	A36
TOTAL WEIGHT THIS DRAWING				165	

