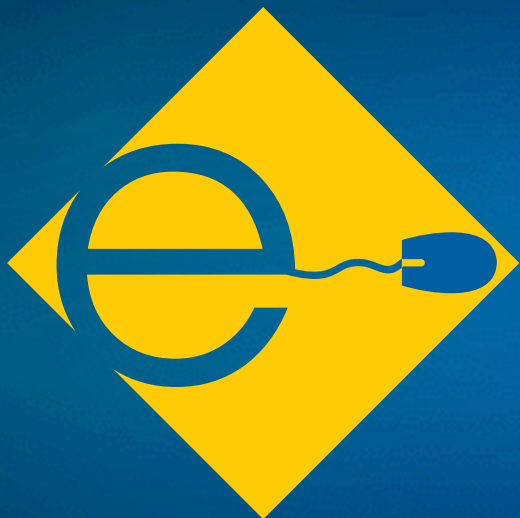


www.sync-global.com

# e-Gyan

The Online and Offline e-ducation Guru

**Of the Schools,  
By the Schools,  
For the Schools.**



**Enriching & Enhancing  
Education Outreach**

SMS SYNC EGYAN TO 56161

A venture by THE GURUKUL Group

Assisted exclusively by [www.sync-global.com](http://www.sync-global.com)



**#TeamSync**



# SCOPE OF WORK

School Demographic (Secondary and Senior Secondary audience)

## Education Preparation

Offer core subjects  
extended classroom learning

- online and offline
- Foreign language instruction
- German, French, Spanish

- *Also- Soft skills and allied learning*

## Language Preparation

Offer language courses for students preparing for studies abroad e.g. - IELTS, TOEFL, PTE, CELPIP

*Niche offering for language & Study abroad courses for students preparing for studies abroad e.g. - IELTS, TOEFL, PTE, CELPIP*

*- University admissions support*  
*- career counseling*

*Mentoring*

*- International Partner*

*- Network*

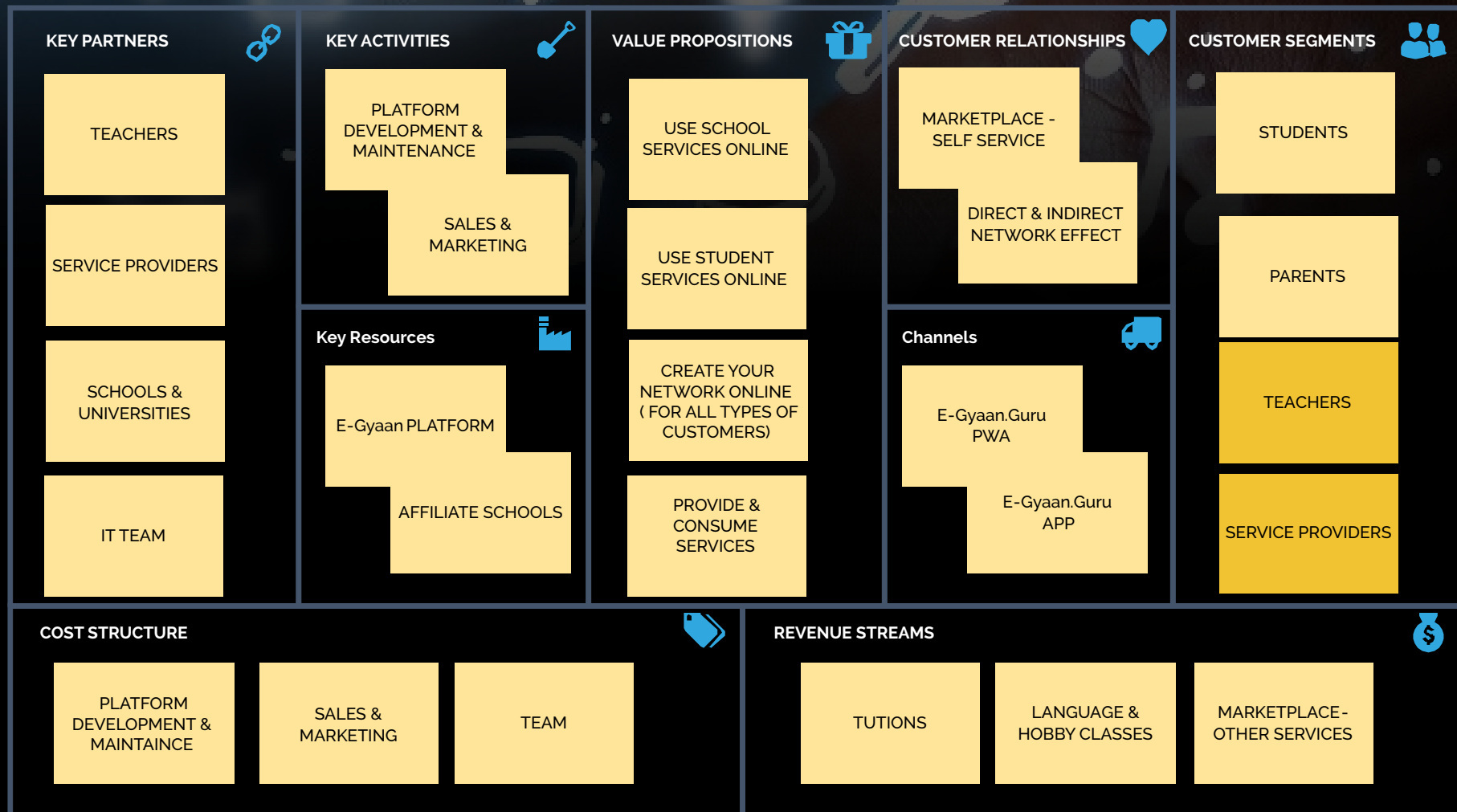
*- Embassies*

*- international sister institutions*

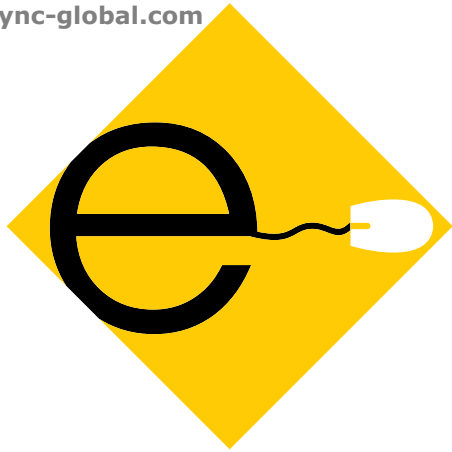
## Books and Beyond Ancillary Services

Bag - Pack will offer logistics  
e.g. - School related retail inventory





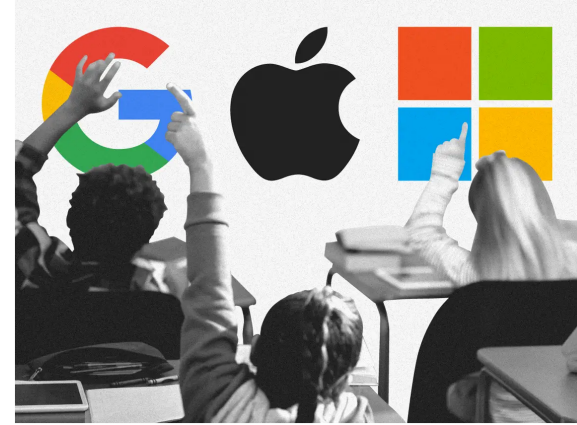




## SCHOOLS



CONNECT.LEARN.GROW



## PARTNERS

### SERVICE CONSUMERS STUDENT/PARENTS

#### SCHOOL SERVICES

ONLINE CLASSES  
TUTIONS  
TESTS & ASSIGMENTS  
GRADES & REPORTS  
DASHBOARDS  
ATTENDANCE  
PAYMENTS



#### ADDITIONAL SERVICES

FRIENDS  
COMMUNITIES  
SERVICES  
SHOP  
PAYMENTS



### TECH PLATFORM

#### PWA/APP

**SERVICES** Online  
Classes Online  
Tutions

**COMMUNITIES**  
Interests Science  
Clubs Hobby &  
Sports

**CONNECTIONS**  
Friends

**INFO FEEDS**

### SERVICE PROVIDERS TEACHERS/OTHERS

#### SCHOOL SERVICES

ONLINE CLASSES  
TUTIONS  
FORUMS



#### ADDITIONAL SERVICES

TUTIONS  
LANGUAGES  
HOBBIES & SPORTS  
BAGPACK  
PROJECTS & ARTS  
SKILL & APTITUDE  
CAREER COUNSELLING  
SCHOOLS & UNIVERSITIES  
DIGITAL LIBRARY  
HIGHER EDUCATION  
PROFESSIONAL COURSES



# ED PREP

*EXTENDED* CLASSROOM SEGMENT

PILOT-PHASE



- **Need assessment (parent/teacher/student) using verified tests**
- **Skill Assessment and course assignment process**
- **Extended Teaching/Learning**  
(classrooms and additional learning (hobbies, extra classes etc.)
  - \* **Supporting and supplementing classroom teaching**
  - \* **Pre recorded classes**
  - \* **Smart Library**
  - \* **Additional clarification and query sessions**
  - \* **Career counselling**
  - \* **Extended classrooms partners segment- selection and verification**
  - \* **Foreign Language Instruction - extended support to in-school classes**
  - \* **Student safety, well being and sensitisation**



# LANGUAGE & UNIVERSITY PREP-SEGMENT

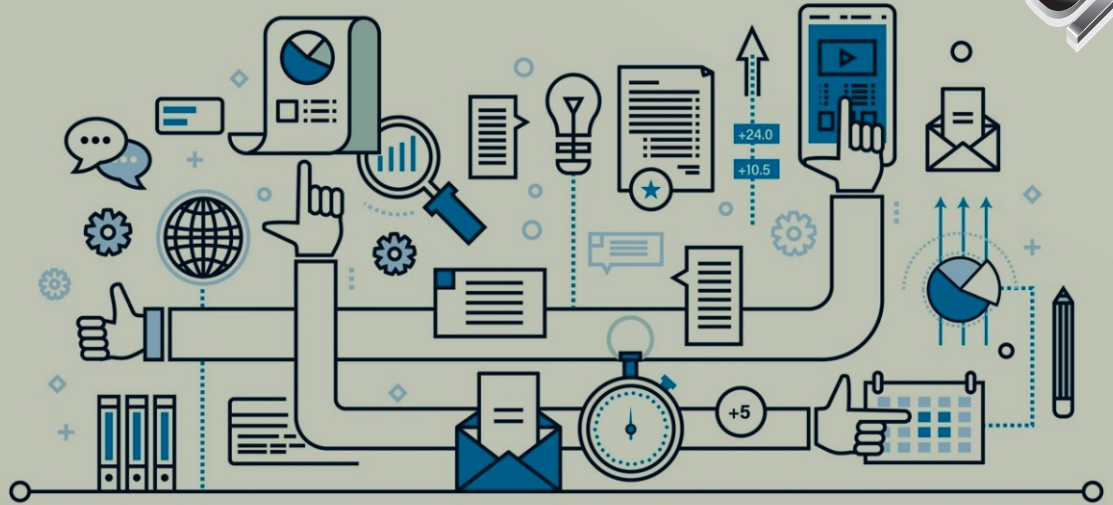
## SUPPORT FOR ENGLISH-LANGUAGE LEARNING (SENIOR SECONDARY)

- **TOEFL, IELTS prep and similar English Language programs**  
(program and partner tie -ups)
- **Skill and English language level assessment**
- **Delivery Modules, Exams and Reports**
- **Career Counselling ( domestic and abroad)**
- **Uni Prep and Examinations**  
(JEE, NEET, National and State University Examinations)
- **CAT, GMAT, GRE** (in subsequent phases)
- **Interactive Classrooms, workshops with educators abroad -  
facilitating extended learning)**



# E-Gyan

## TRANSFORMING FUTURE OF E-LEARNING



- Expanding extended learning to other schools - Govt. Schools India and Abroad
- Collaboration and exchange programs - India and Abroad
- Setting up exclusive Teacher/trainer interactions via approved/verified platforms
- Teacher Training Certifications and Awards - Micro credentials
- Govt endorsements
- CSR with partners
- Vocational Training
- Adding angel investors and VCs
- Brand Building
- Smart Infrastructure and core function advisory for Schools and Educational institutions





# PROJECT *PREP*-SCHEDULE

- PILOT PHASE

- Interaction and Survey of existing infrastructure at client sites – captive database
- Setting up points of contact
- Online Courseware inventory
- Tech Team Set up and Process - (Training if any)





# OPERATIONS (Phase-1)

CAPTIVE DATABASE ONLY

- Skill Assessment - Teachers (due diligence for on boarding)
- Teacher training and recruitment
- Committees - Teachers, Exam, Accounts, Recruitment, Feedback and Impact Assessment
- Forums
- New programs and inclusions – enabling education outreach
- Due diligence and development of knowledge partner network
- Vendor Management
- Compliances and Contracts (NDA)

# E-GYAN ECO-SYSTEM

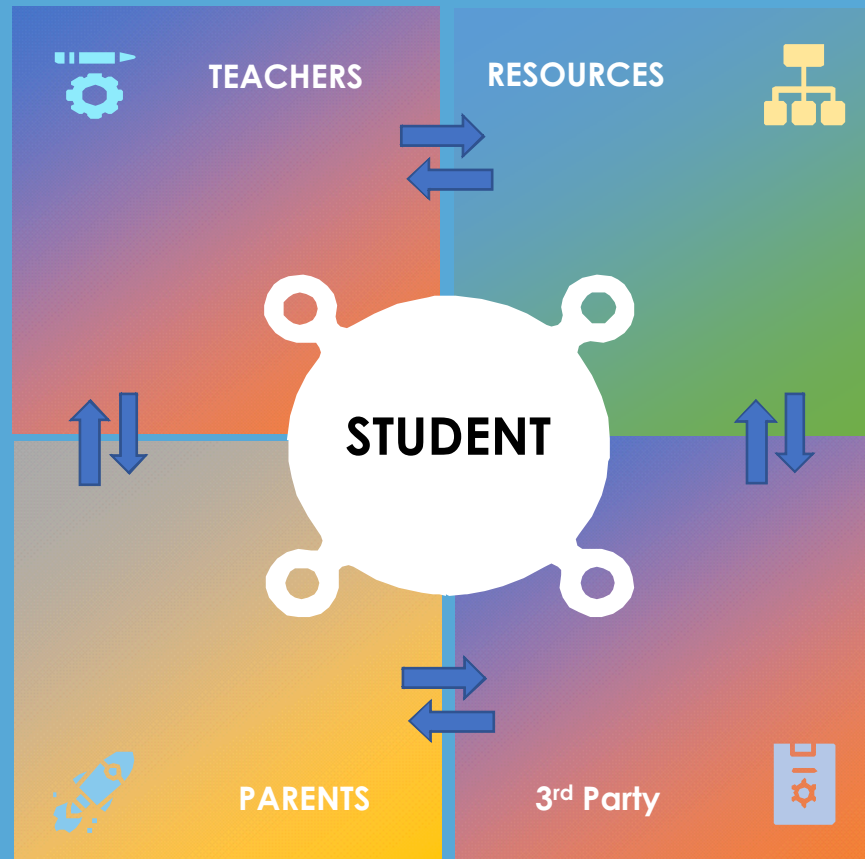


## EXTENDED CLASSROOM

- TUTION SYLLABUS
- BROADCASTING & CHATS
- DIGITAL BOARDS & JAMBOARDS
- TESTS & ASSIGNMENTS
- RESULTS & REPORTS

- TEST SCORES & GRADES
- PROGRESS REPORTS
- ACTIVITY REPORTS
- PTA & PARENT COMMUNITIES
- PAYMENTS

## COMMUNITY



## ADD ON SERVICES

- DIGITAL LIBRARY
- COUNSELLING
- SCHOLARSHIPS & SPONSORSHIPS
- EXCHANGE PROGRAMS
- BAG PACKS

- HOBBY & EXTRA CURRICULAR
- LANGUAGE COURSES
- CODING CLASSES
- CLUBS & ASSOCIATIONS
- STUDENT FORUMS

## LANGUAGE/HOBBY





# TUITION AND LANGUAGE CLASSES HI-LEVEL PROCESS FLOW



## TEACHERS

SYLLABUS &  
COURSE  
CONTENT



1. Syllabus
2. Time Slots
3. Digital Boards

## STUDENTS

PURCHASE  
CLASSES



1. Video classes
2. live chat Q&A
3. Assignment

## PORTAL

TEST &  
ASSIGNMENT



1. Test Portal
2. Assignment Submission
3. Scores & Grading

## PARENTS

ANALYTICS

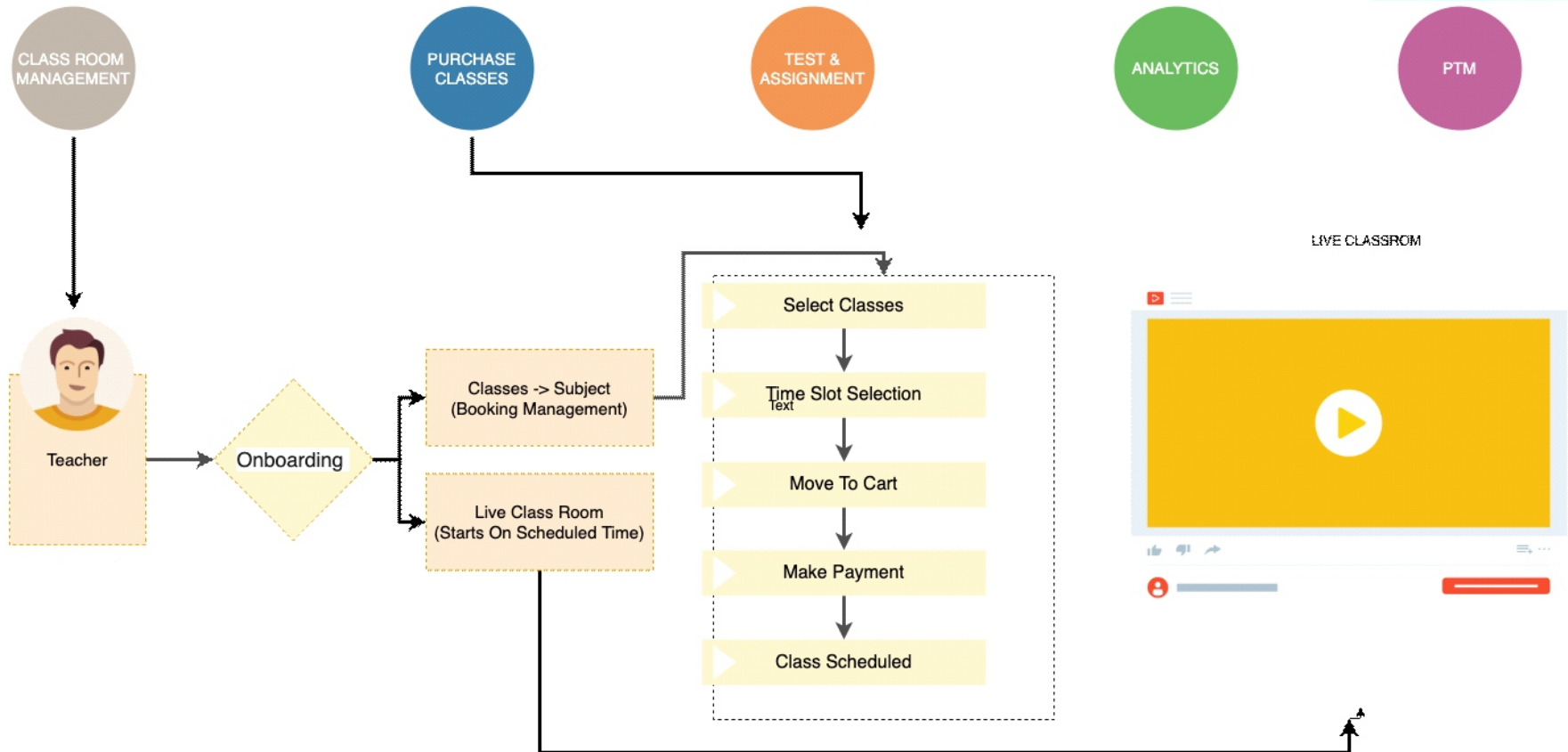


1. Classes Wise Reports
2. Monthly Reports
3. Notify Parents

PTM

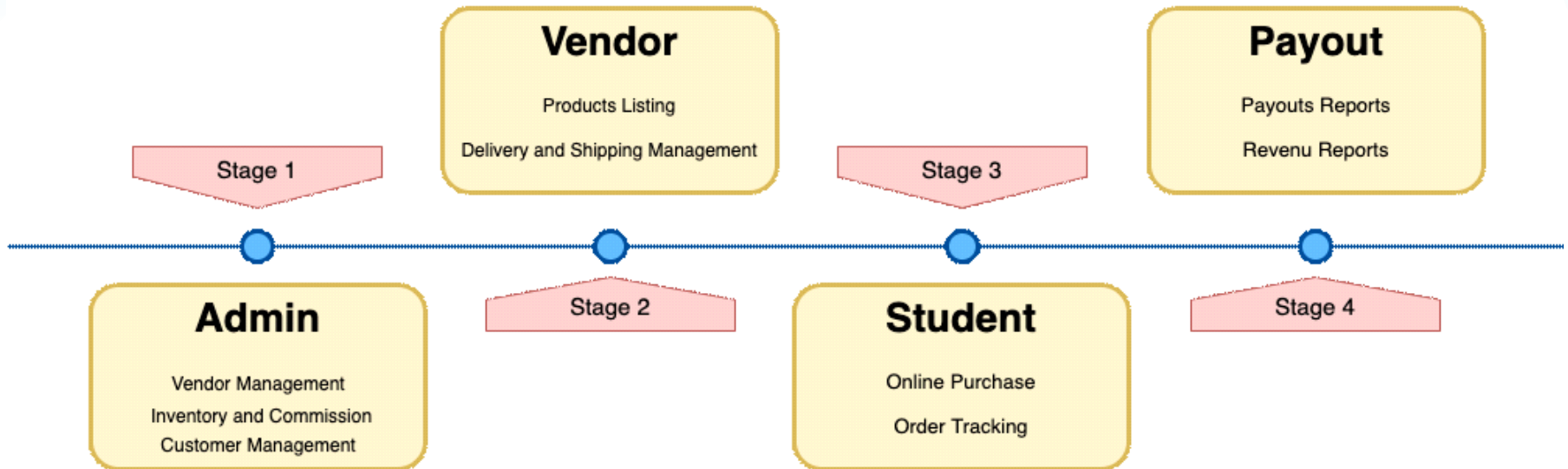


# DETAILED PROCESS FLOW (INSTITUTIONS/SCHOOLS)





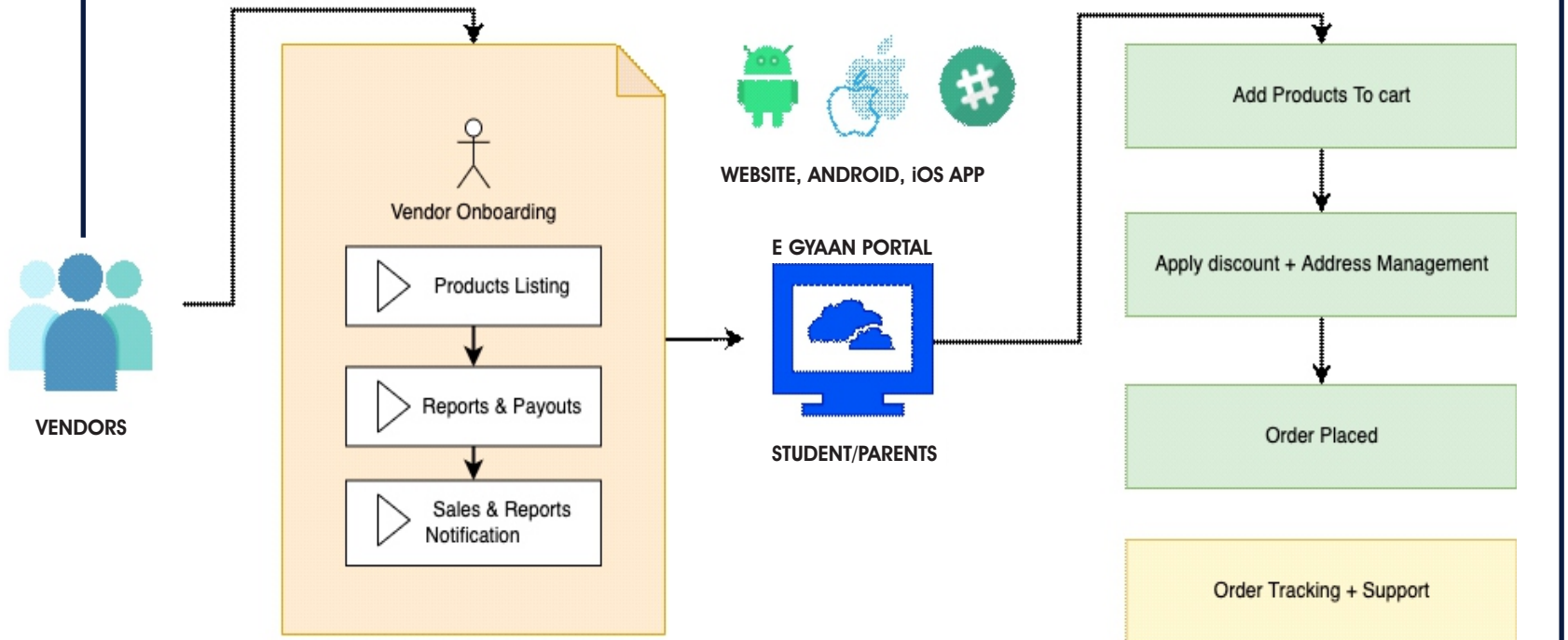
# BAG-PACK PROPOSED PROCESS FOR ROLL-OUT







## BAGPACK DETAILED PROCESS FLOW





- **AI & PLATFORMS IN-USE**
- **CHAT-BOT**
- **VOICE-BOT**
- **TECH-KNOWLEDGE**
- **PARTNERS FOR EACH PLATFORM**
- **eCOMMERCE INTEGRATIONS**
- **INTER OFFICE BRIDGE FOR COMMUNICATION AND ROLL-OUT**
- **SHARING INTEROFFICE SPoCs FOR ACTION**
- **OPEN Q&As**
- **SYNOPSIS**

