



# Actuator Selection Guide

## **AirCon C Series**

**Pneumatic rack & pinion  
Rotary actuators  
Spring return & double acting  
Travel stop adjustments 5%  
Optional travel stop for 100%**

**TB-page 154-18**



**Sizes Ranging from 55 in-lbs to  
28500 in-lbs Standard**

**TB-page 155A-18**



**Series XB**

## **Extended Range Series**

**AirCon heavy duty rack and  
seven pinion actuators offer  
a broad range of torques  
up to 1,565,800 inch lbs**

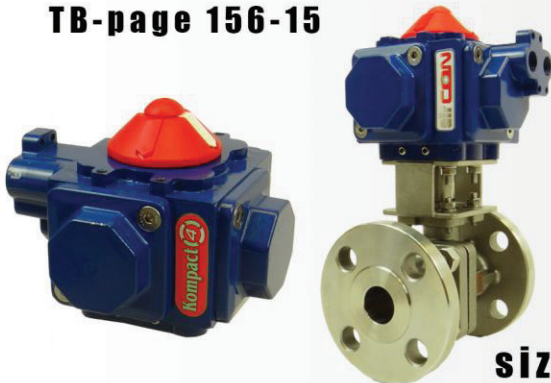
## **AirMax Cylinder Type**

**Dependable high-cycle operation  
The AirMax Actuator is the most  
efficient pneumatic actuator available,  
delivering precise reliable automation  
for all types of control valves.**

**TB-page 68-17-A**



**TB-page 156-15**



## **Kompact 4 Series**

**Space saving - fast acting four piston  
design- increased number of pistons  
allows for a smaller piston diameter,  
allowing less air consumption to reduce  
size while maintaining its high output torques.**

## **Automator Series**

**Spring-Diaphragm Actuator  
designed & developed specifically  
for valves that require precise control  
with low air supply.**

**Torque range; 133 to 12680 inch lbs**







## INOX Series

**304 & 316 Stainless Steel  
Pneumatic rack & pinion  
Actuators suitable for highly  
corrosive environments.**



TB-page 153-16



TB-page 152-17



**PRO-torq**  
electric actuators

## Pro-Torque Series

**Electric actuators built for  
industrial process &  
commercial applications.  
Torque Range : 90 - 177,000 inch lbs.**

## POWER STROKE

The Power-Stroke Series is a heavy-duty product line of pneumatic actuators ideal for operating a higher torque ball, butterfly, or plug valves.

Our Scotch-Yoke design mechanism produces a torque curve that closely matches requirements of valve actuation when converting linear to rotary motion.

The Scotch-Yoke produces greater torque at the beginning and the end of each stroke of the piston, precisely where it is required to operate most valve types.

## Scotch-Yoke Actuators

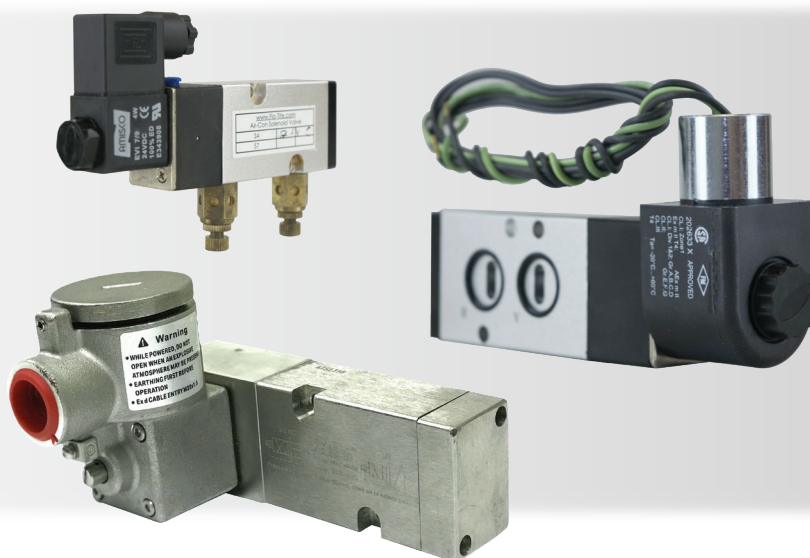


# Air-Con SV Direct Mount Solenoids

Custom-designed pilot type valves for use with pneumatic actuators.

## FEATURES:

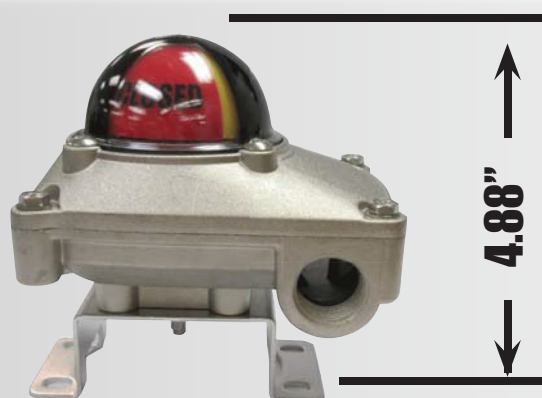
- NAMUR Direct Mounting Rapid
- response
- Nickel infused aluminum body Optional
- stainless
- Wide selection of three & four way types
- Voltage 12, 24, 120, 220 available
- NEMA 4 & 7



## Limit Switch

### ALS Series

Low Cost Compact Design



### ALS II Series

Conventional Size Box



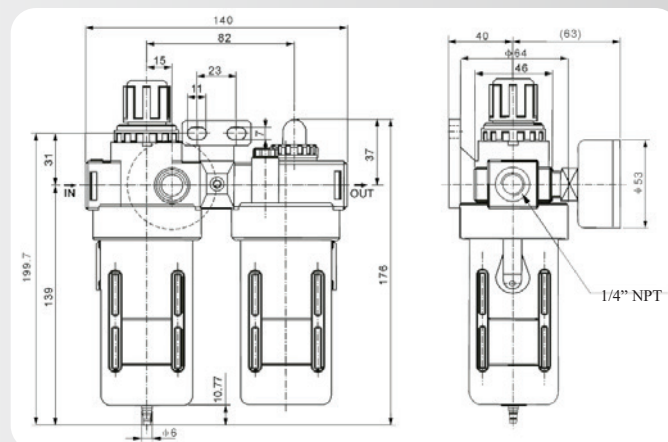
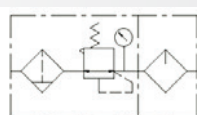
**Corrosion Resistance**  
**Nickel Infused Housing**  
**Low Profile**  
**Visual Indication**



# Filter Regulator & Lubricator (Air-Set)

## SPECIFICATION

Operating fluid	Air
Joint pipe bore	1/4" NPT
Filtrating element micron	40
Range of adjustable pressure	7.25 - 123.28 psi
Max. adjustable pressure	137.8 psi
Ensured pressure resistance	217.5 psi
Operating temperature range	41-140 F
Capacity of filter cup	15 cc
Capacity of oil feel cup	25 cc
Suggested lube	ISO VG 32 or equal
Weight	1.1 lbs
Body material	Aluminum
Container cup material	PE
Protective cup cover material	Iron



Filter regulator units are available in a wide variety of port sizes to meet a broad range of pneumatic air supply filtration, air regulation and compressed air lubrication applications. It includes two parts: filter/regulator and lubricator, but still has three functions: filtration, decompression, and lubricating.

## ISO Square Adapters

Easy - Link's Actuator Inserts are an easy way to mount valves to actuators.

Model  
SQ



## Butterfly Valve Spacer Plates

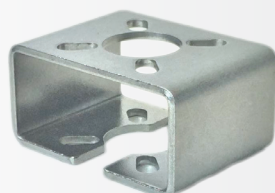


## Easy-Link

### Precision Engineered Actuator Mounting Brackets

#### Features

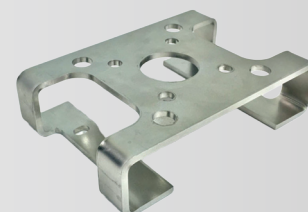
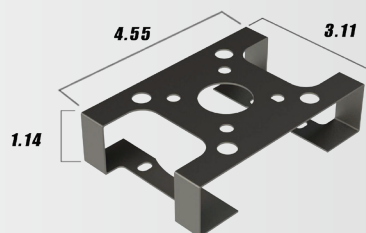
- 12 design built
- Ten different options
- Fits most valves with ISO 5211 mounting bolt holes
- 304 stainless steel or chrome plated carbon steel



#### Limit Switch Bracket

Model LS5

Adjustable stainless steel NAMUR Limit Switch Brackets are designed to directly interface with NAMUR standards





# Easy-Link

Custom Designed Actuator Drive Couplers (from 9 to 46 mm)

Actuator Drive  
Blank Coupler



ISO Square  
Encapsulated Design



ISO Square  
Open Slot



Set Locking Screws

# Indicator Series

Highly Visual Position Indicator  
mounts to Pneumatic Actuators  
with NAMUR standards



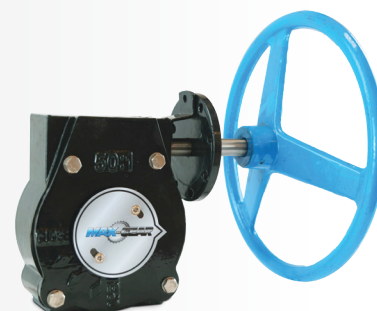
**Offering a wide selection of options.**

Indicators for 90° / Quarter-Turn Valves

Type (open/closed)	Code	Open	Closed
Black / Yellow	Y		
Full Green / Full Red	A		
Full Red / Full Green	B		
ANSI Red / White	R		
ANSI Green / White	G		
ANSI Blue / White	B		

Indicators for Multi-Port Valves (90°)

Type	Code	Position 1	Position 2	Views	Position 1	Position 2
3-way Path O	O			or		
3-way Path T	T			or		
Note: Four Viewing Configurations Possible						
3-way Path F	F			or		
Note: Four Viewing Configurations Possible						
4-way Path S	S			or		

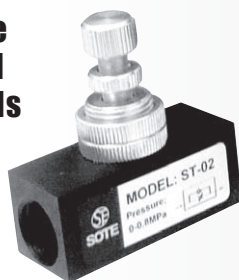


# Manual Worm Gear Operators

# Speed Control Valve

## Silencer, Muffler, Bug Screen, Breather Vent

**In-line  
Speed  
Controls**



An adjustable needle valve provides metered air flow with the adjustable pressure reducing feature

**Speed Controls  
& Muffler  
Combination**



**Silencer  
Muffler**



**Bug Screen  
Breather Vent**



**Flexible Stainless  
Steel Hose**



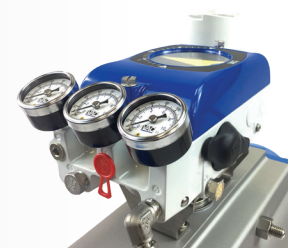
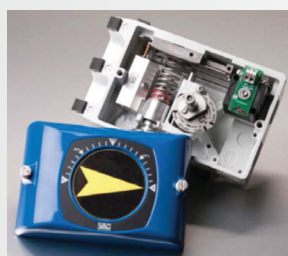
**Hard Stainless  
Steel Pipe**



## Positioners

**Flo-Tite Series V200:** This is our compact NEMA 4X "all-in-one housing" offered in a pneumatic or electro-pneumatic version. It provides a complete modular design utilizing a rugged, die cast aluminum housing. It is easy to calibrate and both the Zero and Span can be adjusted without removing the cover. This unit provides many options, such as a standard I/P, IS, EX, and others. It also offers a position feedback option in the all-in-one modular housing.

**Flo-Tite Series D400:** Our microprocessor based, "intelligent" or "smart" positioner can easily be mounted to a vast offering of pneumatic actuators for accurate valve control. This unit is simple to mount and calibrate with its local push-button calibration and LCD onboard monitoring. With properly filtered air, the D400 can provide extremely accurate and trouble-free service for many years. It's available in Hart, Foundation Fieldbus, or Profibus Communications.



4815 West 5th St  
Lumberton, NC 28358  
sales@flotite.com

Ph: 910-738-2266  
www.airconactuators.com  
www.flotite.com