



# **RIM-A-SLAB**

**Expansion Joint Repair**

A Product of R & D workshop, LLC  
Bob Wilkes, Manager, 281-910-5511



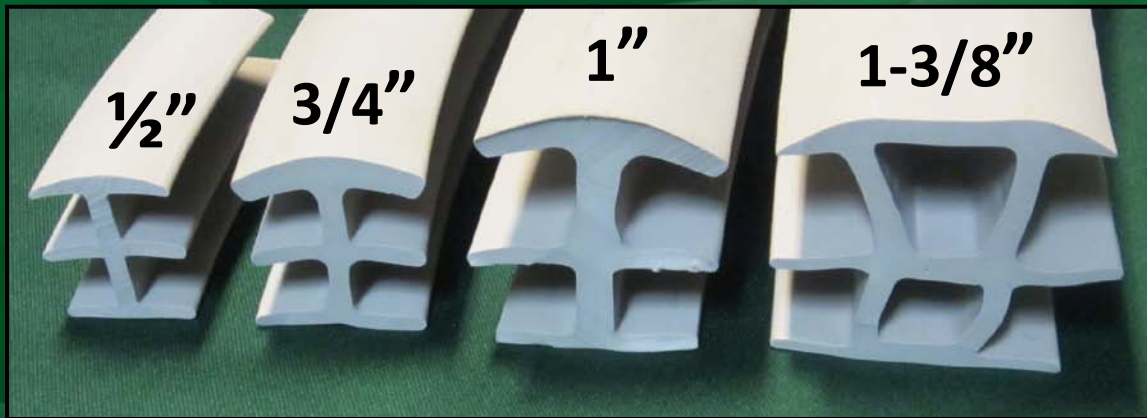
# What is Trim-A-Slab?

- Trim-A-Slab is a Do-It-Yourself repair or replacement for rotting or missing concrete expansion joints
- It is primarily intended for joints that have rounded (radius-troweled) edges



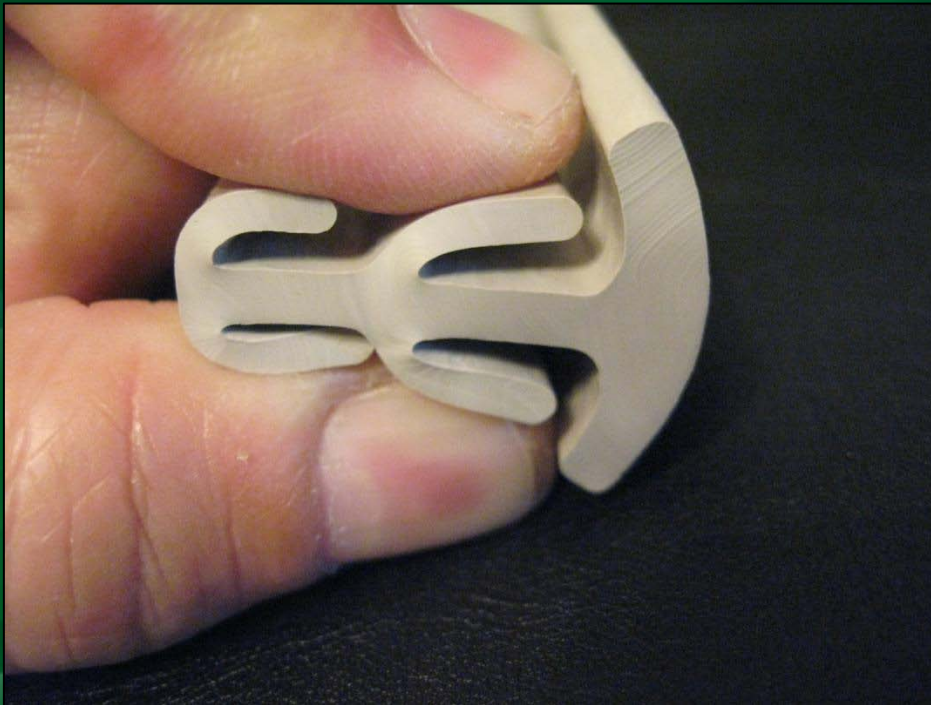
# What is Trim-A-Slab?

- Trim-A-Slab is made from exterior-grade flexible PVC
- It is available in 4 sizes and 3 colors
  - Sizes are:  $\frac{1}{2}$ " ,  $\frac{3}{4}$ " , 1" and  $1\text{-}\frac{3}{8}$ " ; these sizes correspond to the gaps that are being filled
  - Colors are: black, concrete grey, and walnut



# What is Trim-A-Slab?

- Trim-A-Slab is warranted for 5 years for color, 10 years for structural integrity
- It is extremely flexible; each size fits at least  $\pm 1/8$ "



Made in Texas, U.S.A.



# Main Advantages

- Extremely easy to install; a true DIY repair
  - No special skills, prep, or clean-up needed
  - Cuts with pruning shears
  - Installs by hand
- Costs about the same as liquid sealants
- Faster installation than wood or liquid sealers
- Can be installed hot or cold, rain or shine, on sloped surfaces, takes traffic immediately



# More Advantages

- It can be removed and re-used to cover extension cords, wiring, and irrigation lines



- Trim-A-Slab is patented: US 8132380
- Made in USA 
- Easily moved around job site; all sizes weigh 20 lb or less per roll



# Cost Comparison

	<b>Wood</b> 1 x 4 pressure treated select (to get non-warped boards to start) \$4.27/8 ft	<b>Backer rod and liquid sealant</b> 3/4" deep, \$5.98/10 oz tube + backer rod	<b>Trim-A-Slab</b> 3/4" size
<b>Cost / foot</b>	<b>\$ 0.53</b>	<b>\$ 2.54</b>	<b>\$ 2.49</b>
<b>Tools needed</b>	saw, sander, planer	caulk gun, cleaning supplies	pruning shears
<b>Skills needed</b>	carpentry	strong hands (squeezing), neatness	cutting straight
<b>Time</b>	XXXX	XXXX	X
<b>Other considerations</b>	May warp & up out of the gap Will grow weeds right away Entire joint volume must be cleaned out Tapered joints are very difficult to fit	Difficult on slopes (flows downhill) Must get good bond; concrete must be clean Must be dry, not too hot or too cold	Only 1-1/4" of depth is required

# Packaging

- Trim-A-Slab rolls are individually bar-coded
- Rolls weigh 20 lb or less each



Border color matches product color



Coil length

UPC

Size

Color



# Sales Support

- Samples

- Shipped on request
- Sample size is 3-4" in length
- Can be ordered by size or mixed



- Rack cards

- Shipped on request
- Basic info on front
- Installation guide on reverse side



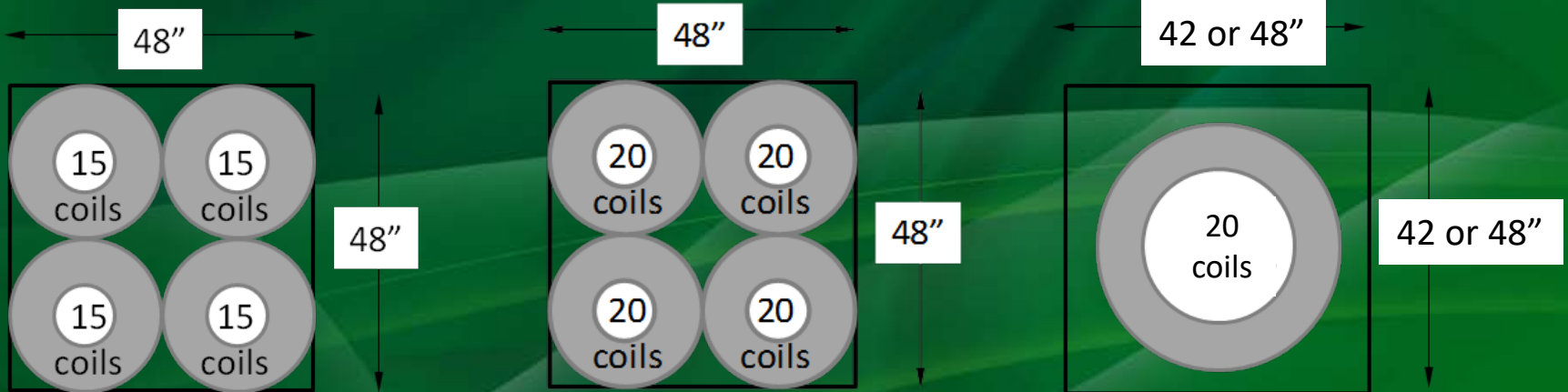
# Sales Support

- POP displays
  - Free with \$800+ intro order
  - 24" x 24" footprint
  - 3 shelves
  - Sample bin
  - 24" x 24" sign
- POP video
- Instructional videos on-line for customer assistance in installation



# Pallet Configurations

Product Description	Coil UPC	Coil length	Coil Dimensions		Coil wt (lb)	Pallet UPC	coils/ pallet	(lb) Pallet weight	(ft) Pallet Size
			Dia (in)	h (in)					
1/2" Black	856857003080	50'	24	1.5	10	10856857003087	80	750	4x4x4
1/2" Grey	856857003073	50'	24	1.5	10	10856857003070	80	750	4x4x4
1/2" Walnut	856857003110	50'	24	1.5	10	10856857003117	80	750	4x4x4
3/4" Black	856857003028	50'	24	5	20	10856857003025	60	1200	4x4x4
3/4" Grey	856857003011	50'	24	5	20	10856857003018	60	1200	4x4x4
3/4" walnut	856857003103	50'	24	5	20	10856857003100	60	1200	4x4x4
1" Black	856857003035	25'	24	4	15	10856857003032	60	900	4x4x4
1" Grey	856857003042	25'	24	4	15	10856857003049	60	900	4x4x4
1" Walnut	856857003127	25'	24	4	15	10856857003124	60	900	4x4x4
1-3/8" Black	856857003066	25'	36	2	20	10856857003063	20	425	4x4x5
1-3/8" Grey	856857003059	25'	36	2	20	10856857003056	20	425	4x4x5
1-3/8" Walnut	856857003134	25'	36	2	20	10856857003131	20	425	4x4x5



Pallet configuration and stacking limits for 3/4", and 1" sizes

Pallet configuration and stacking limits for 1/2" size

Pallet configuration and stacking limits for 1-3/8" size

# For Additional Information

Bob Wilkes, Owner  
R&D Workshop  
2629 Natchez Court  
League City, TX 77573  
[info@trim-a-slab.com](mailto:info@trim-a-slab.com)  
281-910-5511  
FAX 281-715-5112



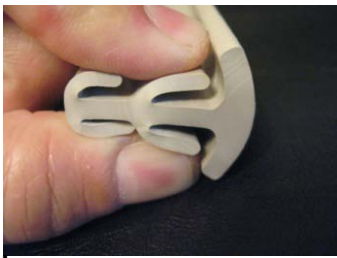
Made in Texas, U.S.A.



A product of: R & D Workshop, LLC  
League City, TX



Trim-A-Slab is a DIY driveway and sidewalk expansion joint repair and replacement material. It is the **easiest, and fastest** to install of any expansion joint repair. Trim-A-Slab is a rubber-like strip which can be pressed into place by hand, requiring minimal preparation of the joint.



What makes Trim-A-Slab so easy to install, and a true DIY repair, is that its geometry is uniquely shaped to allow each size to fit into wide range of expansion joint gaps. In only 4 different sizes, Trim-A-Slab fills from 3/8" to 1-5/8" wide expansion joints. Trim-A-Slab is a truly unique product, recognized by the United States Patent and Trademark Office when Trim-A-Slab received US patent 8132380 in March 2012

Trim-A-Slab is also a cost-effective product, comparably priced to traditional caulk-type fill repairs, yet taking a fraction of the time to install, requiring far less preparation. Additionally, many of these products are too thin to be used on slopes, and all require significant curing time, favorable temperature, and good technique to produce a clean result. None of these are a factor with Trim-A-Slab. With a comparable price point, lots of time savings, and a finished product that is virtually insensitive to installation technique, Trim-A-Slab is the clear choice.

Trim-A-Slab is packaged for retail sale in coils. There are currently 3 colors available; black, grey, and walnut. Custom colors and coil lengths are available.



1. Press it in



2. Cut to length

3. Done!



Made in Texas, U.S.A.

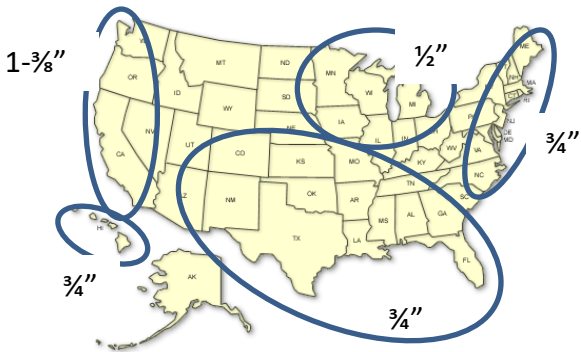


A product of: R & D Workshop, LLC  
League City, TX



Current coil and pallet sizes – Notes: custom lengths, colors, and pallet configurations are available. pallets may not be stacked

Product Description	UPC	Coil length	Packaged Product Dimensions				Pallet UPC	units/pallet	(lb) Pallet weight	LxWxH (in) Pallet Size
			L (in)	W (in)	h (in)	wt (lb)				
1/2" Black	856857003080	50'	24	24	1.5	10	10856857003087	80	750	48x48x32
1/2" Grey	856857003073	50'	24	24	1.5	10	10856857003070	80	750	48x48x32
1/2" Walnut	856857003110	50'	24	24	1.5	10	10856857003117	80	750	48x48x32
3/4" Black	856857003028	50'	24	24	5	20	10856857003025	60	1200	48x48x32
3/4" Grey	856857003011	50'	24	24	5	20	10856857003018	60	1200	48x48x32
3/4" walnut	856857003103	50'	24	24	5	20	10856857003100	60	1200	48x48x32
1" Black	856857003035	25'	24	24	4	15	10856857003032	60	900	48x48x32
1" Grey	856857003042	25'	24	24	4	15	10856857003049	60	900	48x48x32
1" Walnut	856857003127	25'	24	24	4	15	10856857003124	60	900	48x48x32
1-3/8" Black	856857003066	25'	36	36	2	20	10856857003063	20	325	48x48x42
1-3/8" Grey	856857003059	25'	36	36	2	20	10856857003056	20	325	48x48x42
1-3/8" Walnut	856857003134	25'	36	36	2	20	10856857003131	20	325	48x48x42
(ft)										
Expansion Joint Cutter	856857003141		10.25	3.5	1.25	0.33				
3/4" Grey	856857003158	25	24	24	5	11.4		60	625	42 x 48 x 32
3/4" Grey	856857003165	4	48	3	3	2.3				



### Predominant sizes by region

Sizes vary considerably, however, trends in the use of different materials for expansion joints is apparent. The 1/2" size replaces 1/2" fiber-board. The 3/4" size replaces 1x4 wood, and the 1-3/8" size replaces 2x4 wood joints.

### Retail Support



# Sizing Guide

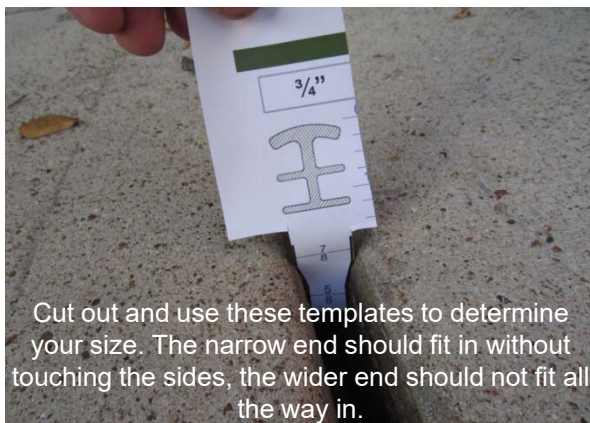
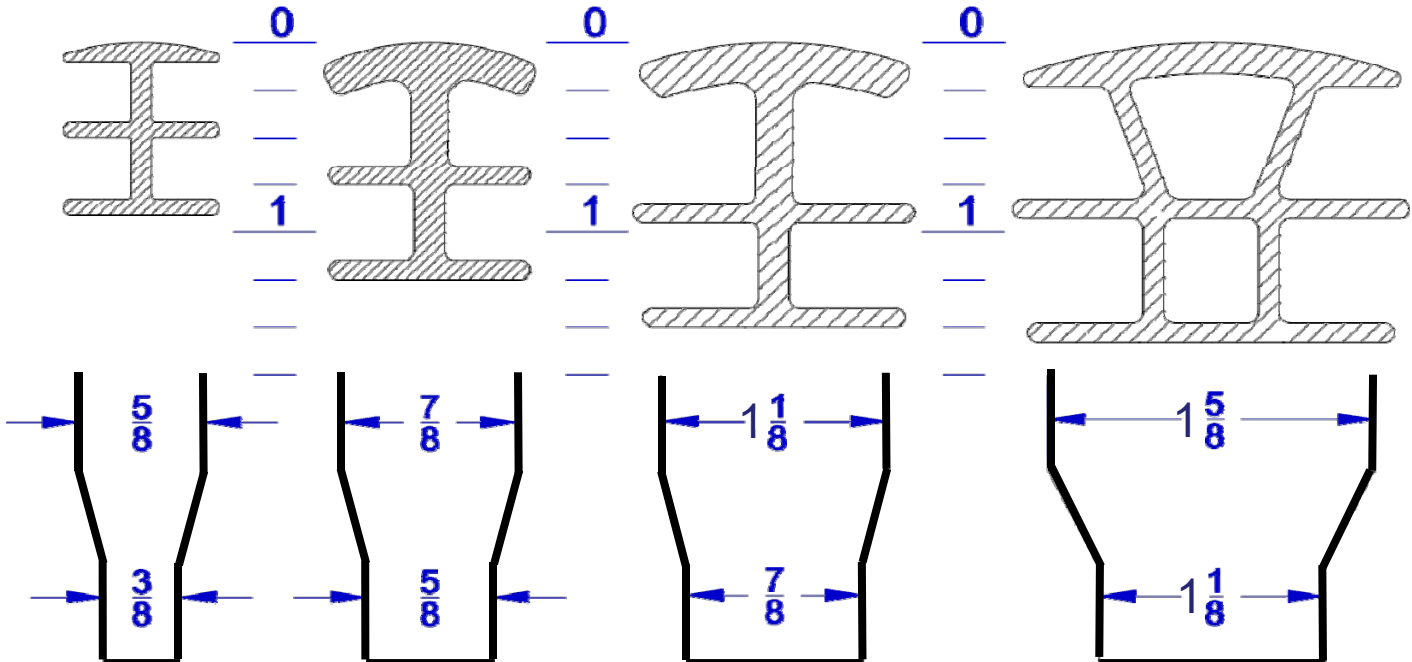
## Available sizes

**1/2"** 50 ft rolls

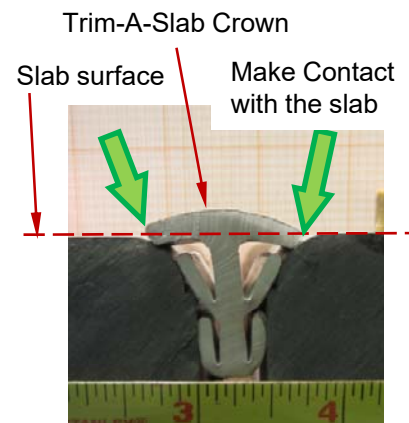
**3/4"** 50 ft rolls

**1"** 25 ft rolls

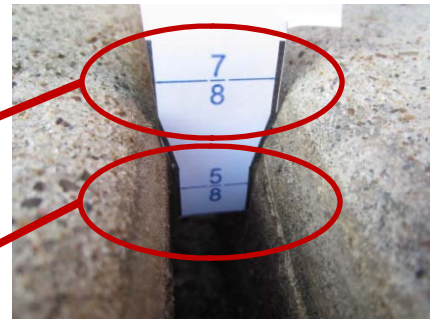
**1-3/8"** 25 ft rolls



Using Trim-A-Slab in a gap that is a little smaller than recommended is possible, however, the rounded 'crown' will sit above the surface of the slab. Try a sample to evaluate your specific application.



1. Measure one of the cutouts to verify that the template is being printed at full scale
2. Cut out along heavy lines
3. The wider end should not fit between the slabs
4. The narrow end should fit between the slabs



This gap should use the 3/4" size