



Drylac[®]
POWDER COATINGS

Special Effects

Volume 6



Replacing boredom and dullness with Special Effects oomph and vivacity

Special Effects color chart exhibits a collection of several lines of special effect finishes designed to provide a distinctive surface appearance while protecting the substrate from corrosion and other elements.

Anodized Effect is a line of super durable polyester TGIC-free AAMA 2604-compliant powder coatings developed to emulate anodized finishes. The finishes are formulated for aluminum extrusions, cast pieces and other ferrous and non-ferrous substrates. They are suitable for Corona and Tribo application equipment.

Candy Transparent is a range of transparent finishes with a candy effect. Colors displayed in this chart are representative of an aluminum substrate. Substrates such as steel, chrome and brushed aluminum are also suitable for top coating with this finish. To achieve an equal finish with other substrates, it is recommended to use a shiny metallic effect as basecoat, such as **Mirror Silver; TIGER Drylac® 49/91260, Kromezone; TIGER Drylac® 49/95001, Chrome OGF; TIGER Drylac® 49/91312 and Sparkle Silver; TIGER Drylac® 49/90450**. Candy Transparent finishes are suitable for Corona and Tribo application equipment. **Candy Transparent finishes provide limited hiding and have limited UV stability.**

High Reflective is a finish where highly reflective glass beads are suspended in a clear coat that can be applied over any color basecoat. This special effect finish is ideal for safety applications, highway and directional signage and for drawing attention to spot-lighted point-of-purchase fixtures where a light source is projected onto the finish. The unlimited basecoat choices make this a very customizable finish.

Designer Finish is a line developed with furniture and lighting designers in mind. These finishes provide a classical look in two and three-tone colors and textures simulating the oxidation of copper, natural rocks and stones. They are suitable for Corona application equipment.

Dormant Transparent flamboyant finish is obtained through the application of two coats. The effect will only evolve after the application of a clear top coat. Swatches in this chart were top-coated with **Clear Glossy; TIGER Drylac® 49/00530**. Additional eye-catching finishes can be achieved by using other **TIGER Drylac®** clear coats and clear glitters such as **Gold; TIGER Drylac® 49/00310, Silver; TIGER Drylac® 49/00320** and **Twilight; TIGER Drylac® 49/00390**. These finishes are suitable for Corona application equipment. Best inter-coat adhesion is achieved by applying the base coat using Corona and the clear top coat using Tribo equipment.

Fluorescent finishes are available as single coat or 2-coat systems. In a 2-coat system, the Fluorescent powder coating must be applied over a smooth high gloss **White base coat; TIGER Drylac® 49/11000**. To achieve a custom-look, the Fluorescent finish can also be applied over **Mirror Silver; TIGER Drylac® 49/91260, Kromezone; TIGER Drylac® 49/95001 or Sparkle Silver; TIGER Drylac® 49/90450**. Fluorescent finishes are suitable for Corona and Tribo application equipment. **Single coat Fluorescent finishes provide limited hiding. Single-coat and 2-coat Fluorescent finishes have limited UV stability.**

Hammertone finish looks as if the surface was textured with a ball peen hammer. The undulated contrast created by the underlying base color adds ambiguity to the finish. To obtain an adequate film thickness in the valleys of the texture, minimum film thickness guidelines must be observed. Hammertone finishes are suitable for Corona application equipment.

TIGER Drylac® stock and custom-colors in Series 39 and Series 49; made in the USA and Canada, are periodically re-certified and carry the UL (Underwriter Laboratory) Recognized Component Mark (Spec DTOV2.MH16276 and Spec DTOV2.MH27573). This UL mark is for all equipment and products intended for the American and Canadian markets.

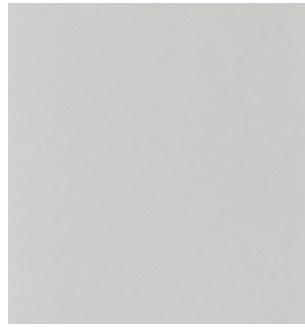


Underwriters Laboratories Inc.
(UL) Recognition.

Special Effects powder coatings in this color chart include

Interior and Exterior (non-architectural) applications	Polyester TGIC	Series 39
	Polyester Urethane	Series 44
	Polyester TGIC	Series 49
	Polyester TGIC-free	Series 59
Exterior (architectural) applications	Polyester TGIC-free Super Durable	Series 61

Color swatches displayed in this chart have been matched to color standards at a 60-degree visual angle. They are to be considered as a representation only. In practice, discrepancy between the color swatch and the actual powder coating may arise. This is due to paper and ink limitations, the influence of light and heat during the color chart production, as well as gloss level, substrate, surface variations, binder systems and pigments, coating thickness and cure oven conditions used during application. For an accurate color and finish assessment, it is recommended to obtain a powder coated sample panel from **TIGER Drylac®**.



anodized effect
Clear | 61/00015



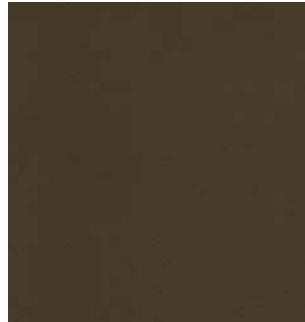
anodized effect
Champagne | 61/78003



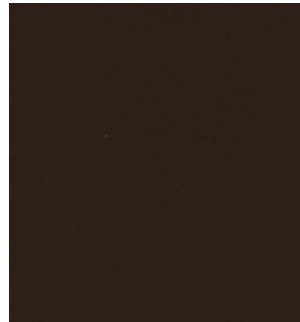
anodized effect
Black | 61/80079



anodized effect
Light Bronze | 61/78002



anodized effect
Medium Bronze | 61/68002



anodized effect
Dark Bronze | 61/68001



candy transparent ▲
Black Smoke Transparent | 49/80375



candy transparent ▲
Brass | 49/20180



candy transparent ▲
Gold | 49/20170



candy transparent ▲
Transparent Green | 49/55730



candy transparent ▲
Candy Lime Green | 49/54810



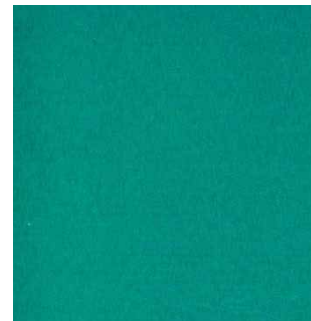
candy transparent ▲
Candy Purple | 49/41480



candy transparent ▲
Candy Blue | 49/43600



candy transparent ▲
Transparent Blue | 49/46110



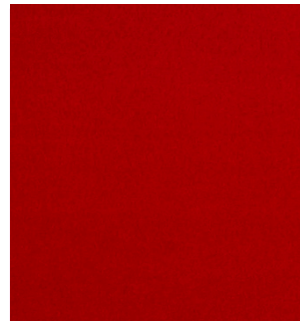
candy transparent ▲
Candy Teal | 49/42130



candy transparent ▲
Copper | 49/63130



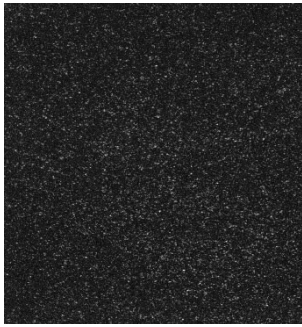
candy transparent ▲
Candy Raspberry | 49/31570



candy transparent ▲
Candy Red | 49/33340



candy transparent ▲
Transparent Red | 49/35810



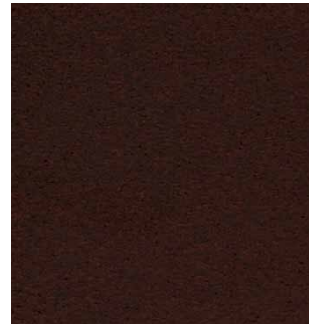
reflective *
High Reflective Starlight | 44/00039



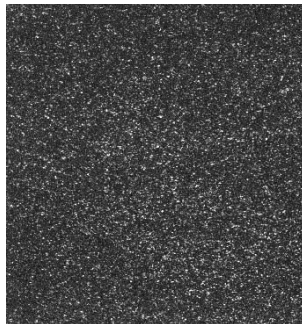
designer finish
Quartzite Design Texture Matte | 44/10033



designer finish
Lava Design Texture Matte | 44/60035



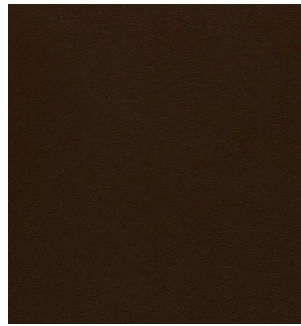
designer finish
Breccia Design Texture Matte | 44/60034



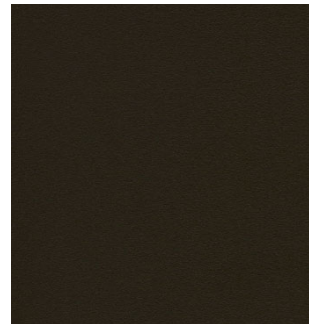
designer finish
Graphite Design Texture Matte | 44/80026



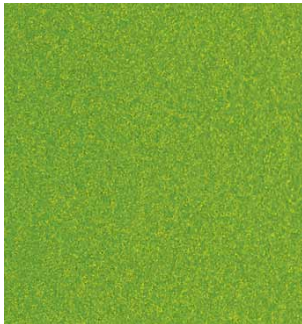
designer finish
Emerald Fine Texture | 49/50028



designer finish
Rust Fine Texture | 49/62711



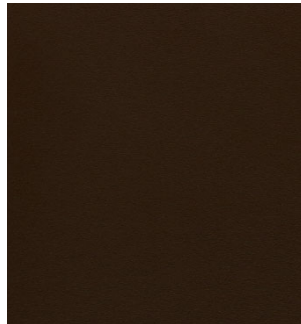
designer finish
Pyrite Fine Texture | 49/60015



dormant transparent **
Sparkle Granny Smith | 49/50032



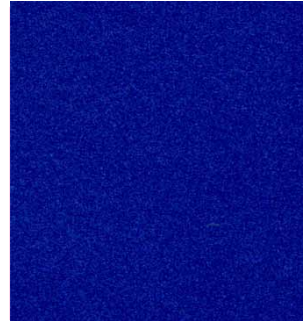
dormant transparent **
Sparkle Green | 49/50024



dormant transparent **
Sparkle Burgundy | 49/30193



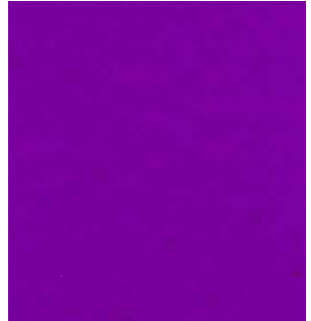
dormant transparent **
Sparkle Sky Blue | 49/40074



dormant transparent **
Sparkle Electric Blue | 49/40233



dormant transparent **
Blue | 49/40940



dormant transparent **
Violet | 49/41100



dormant transparent **
Sparkle Copper | 49/25002



dormant transparent **
Sparkle New Red | 49/30028



dormant transparent **
Sparkle Bomber Orange | 49/23531



dormant transparent **
Sparkle Light Orange | 49/25006

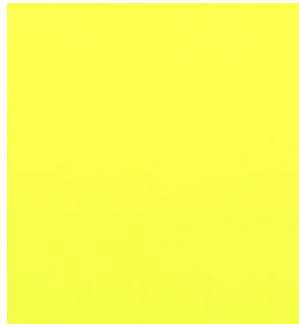
SPECIAL EFFECTS



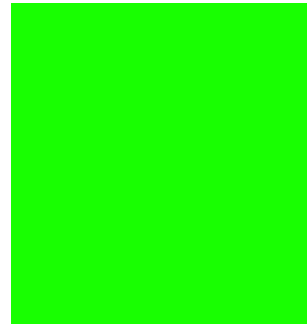
fluorescent ▲
Yellow | 49/22200



fluorescent *** ▲
Yellow | 49/21500



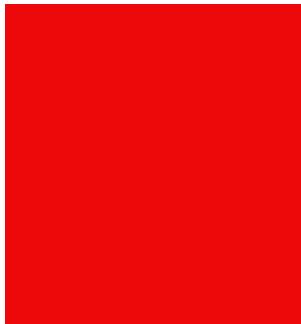
fluorescent ▲
Neon Yellow | 59/20043



fluorescent ▲
Green | 49/51340



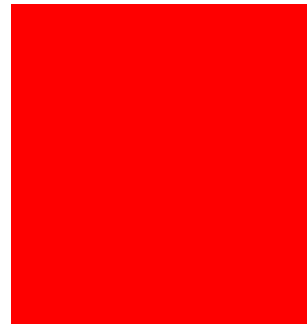
fluorescent *** ▲
Orange | 49/24080



fluorescent ▲
Orange | 49/24610



fluorescent ▲
Red Orange | 49/24620



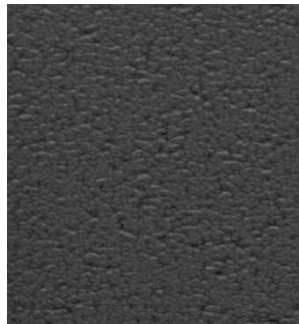
fluorescent *** ▲
Red | 49/30760



fluorescent ▲
Neon Pink | 59/30075



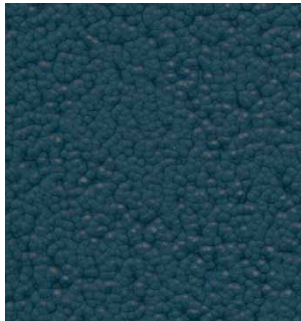
fluorescent *** ▲
Bright Pink | 49/30430



hammered
Black | 39/80005



hammered
Jet Black | 39/81420



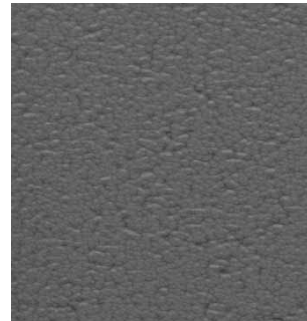
hammered
Capri | 39/40750



hammered
Sapphire | 39/40002



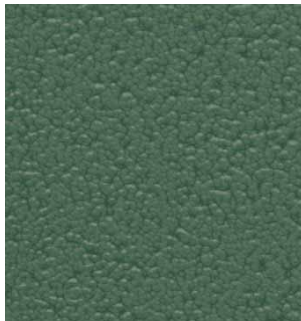
hammered
Light Silver | 39/90980



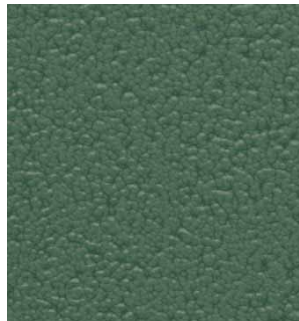
hammered
Silver | 39/90020



hammered
Gold Brown | 39/90280



hammered
Malachite | 39/40003



hammered
Reseda | 39/50002



hammered
Sepia | 39/60002

*** 2-coat Fluorescent system. Applied over a high gloss smooth White Base Coat 49/11000.

▲ Candy Transparent and Single-coat Fluorescent finishes provide limited hiding. Candy Transparent and Fluorescent finishes have limited UV stability.