



Drylac<sup>®</sup>

POWDER COATINGS

# Stellix

2nd generation bonded metallic powder coatings  
volume 2



A BETTER FINISH. FOR A BETTER WORLD.  
Drylac

# Stellix

2nd generation bonded metallics



Silver Fine Texture  
09/90530  
*Interior only*



APRX to RAL 9007 Gloss Silver  
09/90460  
*Interior only*



Copper Blast  
\*\*\* 09/68420  
*Interior only*



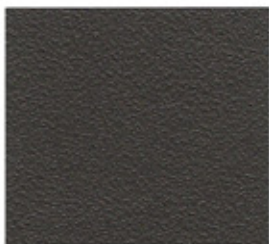
Beige Metallic  
09/60610  
*Interior only*



High Lights Bronze  
09/68635  
*Interior only*



Bronze Metallic  
09/60600  
*Interior only*



Rustico  
09/68560  
*Interior only*



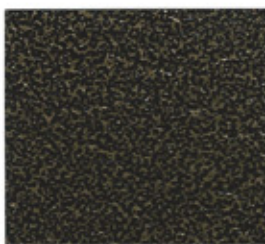
Grey Metallic  
\* 09/80340  
*Interior only*



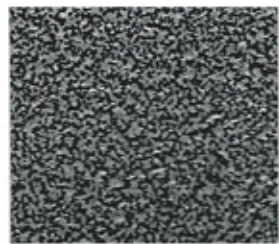
Copper Hybrid  
\* 09/90180  
*Interior only*



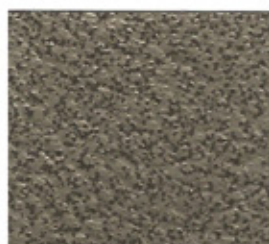
Anthracite Metallic  
09/80170  
*Interior only*



Gold Hybrid  
\* 09/90200  
*Interior only*



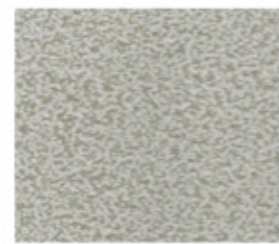
Silver Hybrid  
\* 09/90190  
*Interior only*



Silver Gold  
\* 09/68631  
*Interior only*



Grey Hybrid  
\* 09/90170  
*Interior only*



White Hybrid  
\* 09/90160  
*Interior only*

\* To increase durability and chemical resistance, TIGER Drylac recommends the application of a clear top coat for interior and exterior colors marked with an asterisk.





Epoxy Silver Matte  
\*\* 69/91390  
Interior only



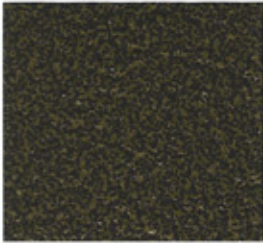
Silver Matte  
49/90500



Silver Matte One Coat  
49/92380



Silver Gloss One Coat  
49/92900



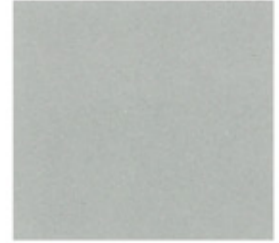
Gold  
49/91190



Anthracite Fine Texture Metallic  
49/79680



APRX to RAL 9006 Matte One Coat  
49/92910



APRX to RAL 9006 Gloss One Coat  
49/92890



Copper  
49/90620



US 2 Fine Texture Glimmer  
49/70787



Brown C33 One Coat  
49/66230



APRX to RAL 9007 Silver Gloss  
49/92880



Silver  
49/93240



US 1 Fine Texture Glimmer  
49/70785



Bronze C34 One Coat  
49/66220



Low Lights Bronze  
49/61120



White  
49/10363



DB 702 Fine Texture Glimmer  
49/70789



Beige C32 One Coat  
49/15240



Sahara Gold  
\*\* 49/90137

\*\* To enhance the depth of the finish, TIGER Drylac suggests the application of a clear top coat for colors marked with double asterisks.

\*\*\* Due to semi transparency of the product, the opacity of the color and finish will depend upon the substrate type and the film thickness. A film below 2.8 mils might not provide enough hiding.



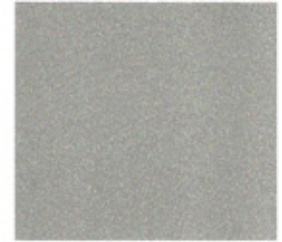
Pearlescent White  
\*\*\* 49/18140



Sparkle Silver  
\*\* | \*\*\* 49/90450



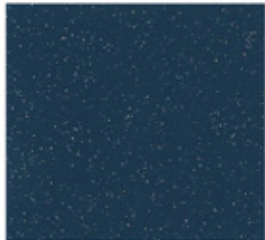
Bengal Silver  
\*\*\* 49/99999



Twinkle  
49/91558



Mirror Silver  
\* 49/91260



Silver 49/00320 (Top coat)  
RAL 5003 49/42230 (Base coat)  
\*\*



Standard Silver  
\* | \*\*\* 49/90380



P 2 Glimmer  
49/70190



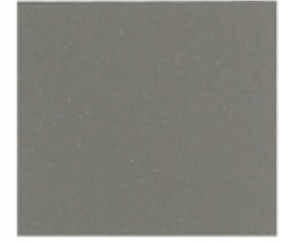
Chrome OGF  
\* | \*\*\* 49/91312



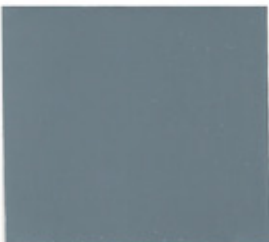
Twilight 49/00390 (Top coat)  
Black 49/82830 (Base coat)  
\*\*



No-Smudge Silver  
49/92790



P 3 Glimmer  
49/70200



Kromezone  
\* 49/95001



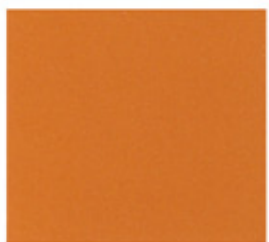
Black Stardust  
\*\* 49/90009



DB 702 Glimmer  
49/77790



P 4 Glimmer  
49/70220



Orange Grove  
\*\*\* 49/38706



Copper Metallic  
\* 49/92780



DB 703 Glimmer  
49/84340

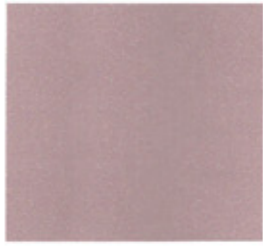


P 6 Glimmer  
49/70210

Recommended clear top coat for Interior Clear Ice Matte Epoxy 69/00300.

Recommended clear top coats for Exterior and Interior Clear Matte Acrylic Hybrid 16/00030 | Clear Semi-gloss Polyester TGIC 49/00280 | Clear Glossy Polyester TGIC 49/00530 | Clear





Hope  
49/38709



APRX to RAL 9006 One Coat Gloss  
59/93370



Brilliant Sparkle Silver **NEW**  
\*\* | \*\*\* 38/90080



P 14 Glimmer  
49/70230



Gun Metal  
59/95726



Anodized Silver  
38/91020



P 5 Glimmer  
49/80180



Oil Rubbed Bronze Fine Texture  
59/91611



Marine Silver One Coat  
38/90010



P 7 Glimmer  
49/80190



Bronze Matte  
39/60020



Greco  
38/68130



Gold Brown  
38/68192



Silver  
39/90000



Champagne 303  
38/15020

# finetexturesglimmersantiques glitterssuperdurablestextures

**Stellix** TIGER Drylac® 2nd generation bonded metallic powder coatings are entirely manufactured in-house using an advanced proprietary technology 2nd generation bonding process that imparts advanced quality and a high degree of color consistency during the application process.

**Stellix unique benefits include**

Batch to batch consistency	Recyclability
Higher first pass transfer efficiency	Uniform and flawless finish
No need for special equipment during application	Lower gun settings leading to less equipment wear
Transportation and storage particle segregation free	No dry spray, clouding, stripping or picture framing

**Attach flair and style to ordinary design creations**

This color chart combines popular exterior and interior **Stellix** 2nd generation bonded metallic powder coatings, designed with the designer, the coater and the OEM in mind.

**Iron Glimmer** smooth and fine textured finishes for exterior applications provide a metallic look but contain little or no metallic pigments. They are ideal for one-coat finish solutions.

**Glitter** finishes contain sparkling metallic flakes suspended in a clear coat. They can be applied over any base coat color, providing a high range of effects by just changing the base coat color. They are available in Gold (not displayed in this chart) and Silver. The Twilight version (49/00390) provides multiple-color sparkles to add delight and cheerfulness to any color.

**Holographic** finishes provide an ever changing color travel. They are available as transparent finishes with multicolored holographic pigments (not displayed in this chart) or as non-transparent finishes with holographic effects. They add mystery and reveal fascinating effects depending on the view angle.

**Pearlescent** finishes offer reflective metallic values reminiscent of natural pearls. They provide luster and shine and transform objects into something special.

**Revitalize flat surfaces with textures**

Antique or Vein textured metallic finishes add visual dimensional layers to objects that otherwise show no character. They also hide uneven surfaces and are easy to maintain.

**Information Fascination**

Finishes designed for **exterior applications** are also suitable for interior applications.

Finishes designed for **interior applications** (such as Series 09, Series 69) do not offer adequate UV resistance for exterior applications. Applying a clear top coat over a finish for an interior application will not increase its UV resistance.

For porous or out-gassing prone substrates such as cast and hot galvanized steel, aluminum flame-sprayed as well as fired clay and ceramic, it is possible to customize any **Stellix** 2nd generation metallic finish in an Out-Gassing Forgiving (OGF) formulation. Alternatively, an OGF additive can be added to any TIGER Drylac powder coating. However, for large volumes, it is recommended to produce the powder coating in an OGF formulation on a custom-basis.

For a proper application of **Stellix** 2nd generation bonded metallic powder coatings, it is recommended to carefully read the “Guidelines for Application of Metallic Powder Coatings” and adhere to its contents. This document is downloadable from TIGER’s website.

**Stellix** 2nd generation bonded metallic powder coatings in this color chart include:

<b>Interior applications</b>	Epoxy/Polyester (Hybrid)	Series 09
	Epoxy	Series 69
<b>Interior and Exterior (non architectural) applications</b>	Polyester TGIC	Series 39
	Polyester TGIC-free	Series 49
	Polyester TGIC-free	Series 59
<b>Exterior (architectural) applications</b>	Polyester TGIC Super Durable	Series 38



2nd generation bonded metallics

# Stellix

Colors and finishes displayed in this chart are to be considered as a representation only. In practice, discrepancy between the color swatch and the actual powder coating may arise. This is due to paper and ink limitations and the influence of light and heat during the chart production, as well as gloss level, substrate and surface variations, binder systems and pigments, coating thickness and cure oven conditions used during manufacturing.

RAL colors are matched as approximate as possible to the RAL Standards.

Color swatches have been matched to color references at a 60-degree angle. Gloss level according to Gardner 60° ASTM D523.

For an accurate color and finish assessment, it is recommended to obtain a powder coated sample panel from TIGER Drylac.

