

EuropeLIFT

optimize reaching

A high quality tracked boom lift
with the most modern control technology
and excellent work performance

5333X



- Working height: 59 ft 5 in
- Horizontal Outreach: 34 ft 5 in (220 lbs)
- Max platform capacity: 485lbs
- Power source: 115 V AC & Honda iGX 390 gasoline engine (electric speed control)
- Hydraulic platform rotator
- Auto chassis leveling (standard)
- Auto-home function (standard)
- Ground pressure sensors on all outrigger plates with audible and visible alarms
- Adjustable tracks width and height (manual)
- Alu basket with wide tool tray and safety handrail
- LCD-Display on platform control box
- Built in Wifi connection for Internet remote service diagnostic (standard)
- Short training time

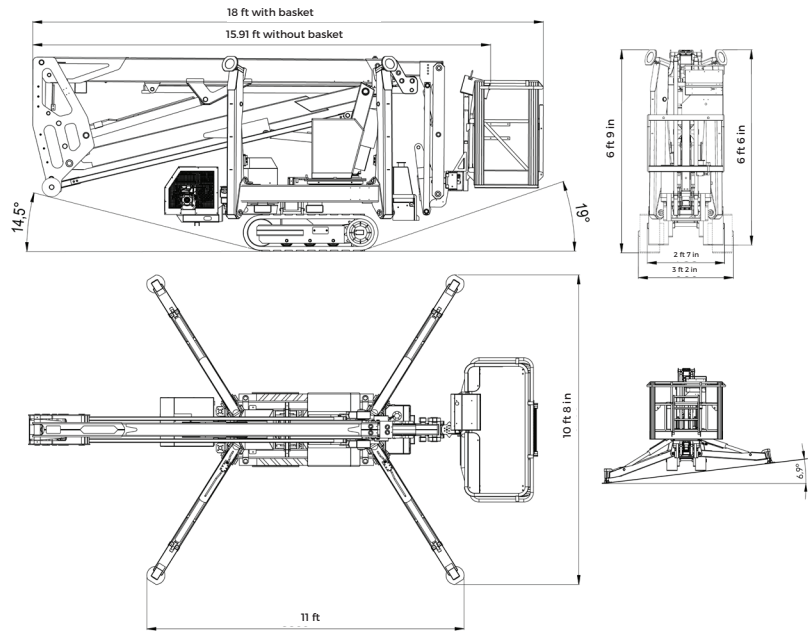


TRACKED MOUNTED BOOM LIFT

EuropeLIFT

Typ: **53 33X**

Technical data	53 33A
Working Height	59 ft 5 in
Platform Height	52 ft 10 in
Horizontal Reach (485 lbs)	26 ft 6,9 in
Horizontal Reach (220 lbs)	app. 34 ft 5 in
Max. Platform capacity	485 lbs
Slewing	365°
Flyjib	4 ft 3 in
Platform dimensions	3 ft 11 in x 2 ft 7,5 in x 3 ft 7 in
Platform rotator	2x65°
Transport lenght (A)	18 ft
Transport lenght without platform	16 ft
Transport width without platform	2 ft 6 in
Transport height	6 ft 52 in
Total weight	5 577.69523 lbs
Outrigger footprint (D) Outrigger plate outer edge	10 ft 69 in
Gradeability	6,9 %
Energychain	inside

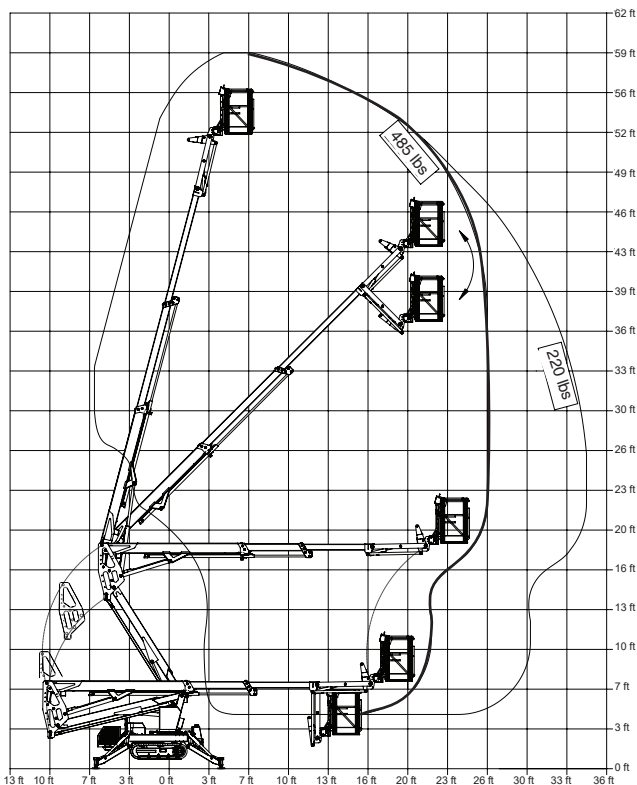


STANDARD FEATURES

- 59 ft 5 in working height
- 34 ft 5 in horizontal reach
- Max platform capacity: 485lbs
- 115V AC & Honda iGX390 power source with electric speed control
- Auto chassis leveling
- Non marking tracks
- Dual drive speed
- Width and length adjustable tracks (manual)
- Alu basket with wide tool tray, safety handrail
- Propotional electro-hydraulic control by fingertip joysticks
- Cable remote control track , outrigger, flyjib
- Built in Wifi connection for Internet remote service diagnostic
- Ground pressure sensors on all outrigger plates with accoustic and visual alarm
- Ground and work platform control
- Chassis level sensor 1° with accoustic alarm
- Lower and upper control panel tarpaulin covers
- Hydraulic platform rotator
- Autohome
- Hydraulic platform leveling with auto correction at 3°
- High-gloss paint, color: red RAL 3002
- Manual pump emergency control
- Working hour meter

OPTIONS

- Custom colour
- Lithium Ion power source
- Outrigger plates 1 ft 3 in x 1 ft 3 in x 1,1 in
- Air and water line to the platform
- LED flashing light on outriggers



EuropeLIFT

Adresse: H-8992 Bagod, Gépállomás u. 9.

Tel: +36 20 9474 767

Internet: info@europelift.com | www.europelift.com

NEW NATIONAL EQUIPMENT WHOLESALE

1725 Spectrum Dr. Ste A
Lawrenceville, GA 30043 • 800.771.0908
www.nationalequip-us.com