

### KEY FEATURES

- + 1000mm(W) × 800mm(H) tunnel size
- + HD image enhancement
- + Image penetration enhancement
- + Rejection of organics

### BASIC PARAMETERS

Tunnel size	39.3"(W) × 31.5"(H) / 1000mm(W) × 800mm(H)
Conveyor speed	0.65ft/s [0.2m/s]
Conveyor maximum load	441lbs [200kg]
Pass rate	1500 piece/hour
Metal wire resolution	typical 34AWG / Ø0.1601mm (-0800E) typical 38AWG / Ø0.1007mm (-0800P)
Penetration through steel plate	typical 30mm (-0800E) typical 32mm (-0800P)
Dose per inspection	typical 1.0µGy/h (-0800E) typical 1.5µGy/h (-0800P)
X-ray leakage	typical 0.6µGy/h at 2" [5cm] from the machine (-0800E) typical 1.0µGy/h at 2" [5cm] from the machine (-0800P)
Film safety	ISO1600 Film
Food medicine and film	x-ray exposure has no adverse effects
Operating system	Linux (-0800E) / Windows (-0800P)

### X-RAY GENERATOR

Tube current (adjustable)	0.4 to 1.2mA
Tube voltage (adjustable)	140kV (-0800E) / 160kV (-0800P)
Beam direction	top, angle, 80 degree
Generator quantity	one (single generator)
Cooling/duty cycle	oil cooling/100%

### IMAGE PROCESSING

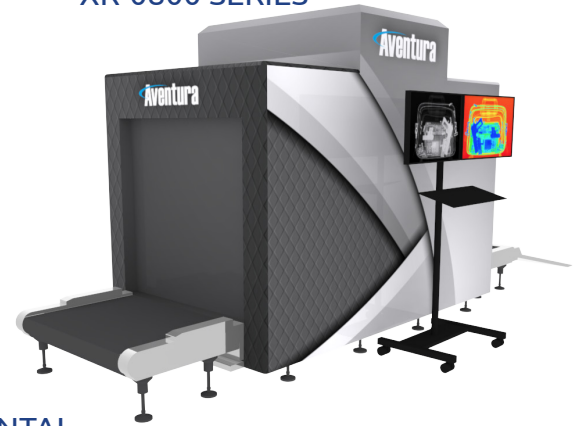
Ray sensor	photodiode array detector (double energy)
Image display	two 24" LCD, high resolution color
Image maximum resolution	1920×1080 pixels
Image storage	60,000 images
Image processing	24bit for processing real time; edge enhancement, straightening, returning, retrieval
Image options	high penetration, low penetration, magnifier, brightening/darkening
Magnifier	1 to 64 times (whole screen continuous observation)
Multi color display for organic energy	orange for organic, blue for inorganic, green for mixture
High energy / low energy	display key
Dangerous goods aided detection	yes (weapons, drugs, explosives)

### ELECTRICAL

Operating voltage	110Vac/220Vac (±10%) (specify at time of order)
Power consumption	1kW (max) / 800W (nominal)
UPS	20 Minute Standby

# BAGGAGE SCANNER

## XR-0800 SERIES



### ENVIRONMENTAL

Operating temperature	32°F to 114°F [0°C to 45°C]
Storage temperature	-4°F to 140°F [-20°C to 60°C]
Operating humidity	20% to 95% (non-condensing)
Storage humidity	20% to 95% (non-condensing)

### CONNECTION

Cable length	15' [5m]
Cable type	USB extension (x2) / monitor power cable monitor VGA cable / security keyboard cable

### X-RAY PHYSICAL CHARACTERISTICS

Length	123.5" [3138mm] - including IN/OUT conveyor belts 70.5" [1790mm] - excluding IN/OUT conveyor belts
Width	51" [1295mm]
Height	67.57" [1716.5mm]
Conveyor belt height	13.5" [341mm]
Weight	1764lbs [800kg]

### CONSOLE PHYSICAL CHARACTERISTICS

Controller cabinet	dual cabinet (two monitors)
Controller cabinet size	39.37"(W) × 29.5"(D) × 48"(H) 100cm(W) × 75cm(D) × 122cm(H)
Controller cabinet weight	147.7lbs [67kg]

### GENERAL

Controls	x-ray unit emergency push button controller keyboard with emergency push button mouse and keyboard
Visual display	green LED - device on red LED - x-ray in-use / calibrating amber LED - alarm"
System noise	58 dB
Communication	ethernet (-0800P) only

### PART NUMBERS

XR-0800E	x-ray machine with 1000×800 tunnel size and Linux operating system (-0800E)
XR-0800P	x-ray machine with 1000×800 tunnel size and Windows operating system (-0800P)