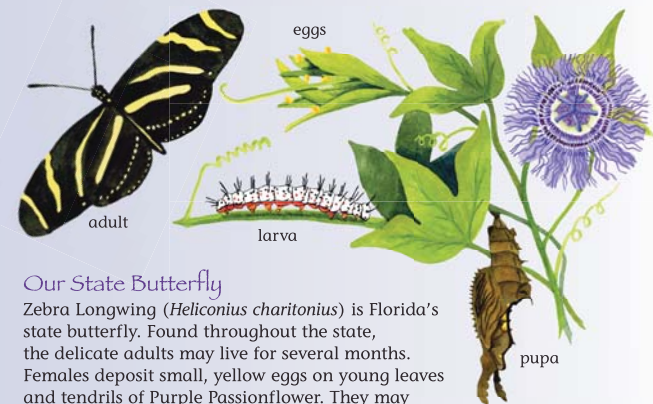


Florida Wildflowers & Butterflies



Florida is home to a spectacular array of wildflowers and butterflies. There are some 2800 native plants and more than 180 species of butterflies for residents and visitors to enjoy year round. This diversity is due in part to Florida's geographic location — it is suitable for many temperate and subtropical species. Invite butterflies to your yard by gardening with native plants. Cater to their life cycle needs by including nectar plants for adult butterflies and host plants for their larvae.

Butterflies have four life stages: egg, larva (caterpillar), pupa (chrysalis), and adult. By planting host plants, you are providing food for caterpillars and can enjoy watching them grow and transform into adult butterflies. The life cycle below shows the egg, larva, pupa, and adult stages of the Zebra Longwing on its host plant, Purple Passionflower.



Our State Butterfly

Zebra Longwing (*Heliconius charitonius*) is Florida's state butterfly. Found throughout the state, the delicate adults may live for several months. Females deposit small, yellow eggs on young leaves and tendrils of Purple Passionflower. They may produce numerous generations each year.

Our State Wildflower

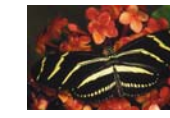
The genus *Coreopsis* is Florida's state wildflower. Often called tickseeds, the plants' small seeds cling to clothing or pet hair and resemble insects. Thirteen *Coreopsis* species occur in Florida, two of which are found only in Florida. *Coreopsis* is frequently planted in gardens, and can often be seen along roadsides.



Palamedes Swallowtail
Papilio palamedes



Giant Swallowtail
Papilio cresphontes
Larval host plants include:
Wild Lime



Zebra Longwing
Heliconius charitonius
Larval host plants include:
Purple Passionflower,
Corky-stemmed Passionflower



Queen
Danaus gilippus
Larval host plants include:
White Swamp Milkweed,
Butterflyweed



Viceroy
Limenitis archippus



Monarch
Danaus plexippus
Larval host plants include:
White Swamp Milkweed,
Butterflyweed



Hackberry Butterfly
Asterocampa cellis



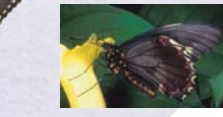
Eastern Tiger Swallowtail
Papilio glaucus
Larval host plants include:
Wild Cherry



Eastern Black Swallowtail
Papilio polyxenes



Pipevine Swallowtail
Battus philenor



Polydamus Swallowtail
Battus polydamus



Spicebush Swallowtail
Papilio troilus



Red-spotted Purple
Limenitis arthemis astyanax
Larval host plants include:
Wild Cherry



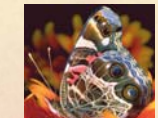
Gulf Fritillary
Agraulis vanillae
Larval host plants include:
Purple Passionflower,
Corky-stemmed Passionflower



Phaon Crescent
Phyciodes phaon



Malachite
Siproeta stelenes



American Painted Lady
Vanessa virginensis



White Peacock
Anartia jatrophae



Question Mark
Polygonia interrogationis



Common Buckeye
Junonia coenia
Larval host plants include:
False Foxglove, Twinflower,
Carolina Wild Petunia



Red Admiral
Vanessa atalanta



Gray Hairstreak
Strymon melinus



Red-banded Hairstreak
Calycopis cecrops



Great Purple Hairstreak
Atlides halesus



Cloudless Sulphur
Phoebis sennae



Orange-barred Sulphur
Phoebis philea



Sleepy Orange
Eurema nicippe



Southern Dogface
Zerene cesonia
Larval host plants include:
Bastard Indigo, Summer
Farewell



Banded Hairstreak
Satyrion calanus



White-M Hairstreak
Parthasius m-album



Little Metalmark
Calophaelis virginensis
Larval host plants include:
Purple Thistle



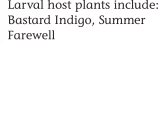
Barred Sulphur
Eurema daira



Great Southern White
Ascia monuste



Checkered White
Pontia protodice



Ceraunus Blue
Hemitarucus ceraunus



Horace's Duskywing
Erynnis horatius



Little Metalmark
Calophaelis virginensis
Larval host plants include:
Purple Thistle



Barred Sulphur
Eurema daira



Dainty Sulphur
Nathalis iole



Great Southern White
Ascia monuste



Checkered White
Pontia protodice



Ceraunus Blue
Hemitarucus ceraunus



Long-tailed Skipper
Urbanus proteus
Larval host plants include:
Beaked Butterfly Pea



Silver-spotted Skipper
Epargyreus clarus
Larval host plants include:
Bastard Indigo



Barred Sulphur
Eurema daira



Little Wood Satyr
Megisto cymela



Dainty Sulphur
Nathalis iole



Great Southern White
Ascia monuste



Ceraunus Blue
Hemitarucus ceraunus



Southern Skipperling
Copaodes minimus



Clouded Skipper
Lerema accius



Tropical Checkered Skipper
Pyrgus oileus



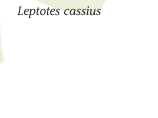
Little Wood Satyr
Megisto cymela



Dainty Sulphur
Nathalis iole



Great Southern White
Ascia monuste



Cassius Blue
Leptotes cassius



Fiery Skipper
Hylephila phyticus



Clouded Skipper
Lerema accius



Tropical Checkered Skipper
Pyrgus oileus



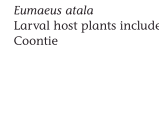
Little Wood Satyr
Megisto cymela



Dainty Sulphur
Nathalis iole



American Snout
Libytheana carinenta



Atala
Eumaeus atala
Larval host plants include:
Coontie

Gardening with Native Plants

A great variety of Florida native plants are excellent for landscaping. They can be planted in small containers or over several acres.

Native plants:

- Conserve water by requiring less irrigation once established
- Are adapted to Florida's soil types and climate
- Provide food and shelter for butterflies, birds, and other wildlife
- Help your pocketbook by reducing maintenance and pest control costs
- Add beauty and interest to your landscape

Designing Your Garden

As you plan your garden, follow these guidelines to attract the greatest diversity of butterfly species:

- Plant both larval host plants and adult nectar sources for butterflies at all stages of their lives
- Garden in full sun and partial shade
- Select a variety of plants that bloom at different times
- Choose plants with different heights and growth habits
- Group plants of the same species
- Use a mixture of flower colors, shapes, and sizes
- Check the sunlight, water, and soil needs of each plant to determine the best location



Only butterfly host plants included in this brochure are listed under the butterfly images. Most butterflies have several host plants — this brochure is not comprehensive. For more information about Florida wildflowers and butterflies, visit <http://www.flmnh.ufl.edu/wildflower>.

Key to symbols

drought tolerant when established

moderate water

wetland plant

larval host plant

full sun

part sun

shade



Coontie
Zamia pumila



Saw Palmetto
Seroenoa repens



This brochure is an educational project developed in cooperation with the State of Florida and the Florida Wildflower Foundation, Inc. You can support research, education, and community planting projects by purchasing a State Wildflower Speciality License Plate.



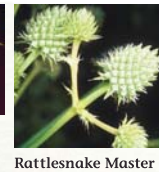
Florida Museum of Natural History
UF Cultural Plaza
SW 34th Street & Hull Road
PO Box 112710
Gainesville, FL 32611-2710
352-846-2000
www.flmnh.ufl.edu



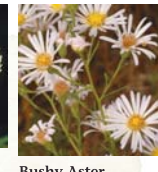
White Swamp Milkweed
Asclepias perennis



Dotted Horsemint
Monarda punctata



Rattlesnake Master
Eryngium yuccifolium



Bushy Aster
Symphotrichum dumosum



Wild Coffee
Psychotria nervosa



Snow Squarestem
Melanthera nivea



Scorpion-tail
Heliotropium angiospermum



Summer Farewell
Dalea pinnata



Flatwoods Plum
Prunus umbellata



Sparkleberry
Vaccinium arboreum



New Jersey Tea
Ceanothus americanus



Wild Cherry
Prunus serotina



Virginia Snakeroot
Aristolochia serpentaria



Slim-leaf Pawpaw
Asimina angustifolia



Corky-stemmed Passionflower
Passiflora suberosa



Bastard Indigo
Amorpha fruticosa



Leavenworth's Tickseed
Coreopsis leavenworthii



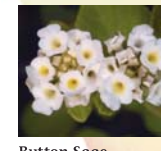
Lance-leaved Tickseed
Coreopsis lanceolata



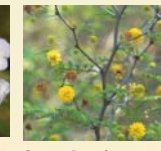
Narrowleaf Sunflower
Helianthus angustifolius



Yellow Buttons
Balduina angustifolia



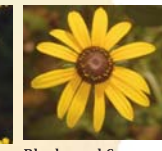
Button Sage
Lantana involucrata



Sweet Acacia
Acacia farnesiana



Seaside Goldenrod
Solidago sempervirens



Black-eyed Susan
Rudbeckia hirta



Wild Lime
Zanthoxylum fagara



Indian Blanket
Gaillardia pulchella



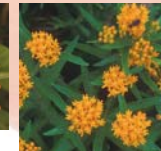
Scarlet Hibiscus
Hibiscus coccineus



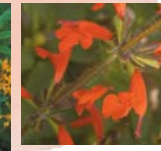
Redbud
Cercis canadensis



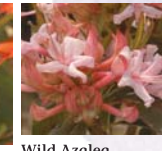
Firebush
Hamelia patens



Butterflyweed
Asclepias tuberosa



Tropical Sage
Salvia coccinea



Wild Azalea
Rhododendron canescens



Blue Porterweed
Stachytarpheta jamaicensis



Purple Passionflower
Passiflora incarnata



Mistflower
Conoclinium coelestinum



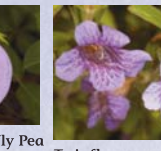
Blue-eyed Grass
Sisyrinchium atlanticum



Carolina Wild Petunia
Ruellia carolinensis



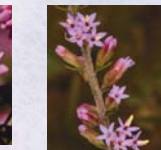
Beaked Butterfly Pea
Centrosema virginianum



Twinflower
Dyschoriste oblongifolia



Stokes' Aster
Stokesia laevis



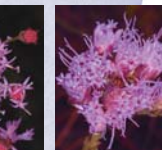
Gayfeather
Liatris tenuifolia



Coastal Mock Vervain
Glandularia maritima



Giant Ironweed
Vernonia gigantea



Paint Brush
Carphephorus corymbosus



Joe-pye Weed
Eupatorium fistulosum



Purple Thistle
Cirsium horridulum



Deer's Tongue
Carphephorus paniculatus



False Foxglove
Agalinis fasciculata

