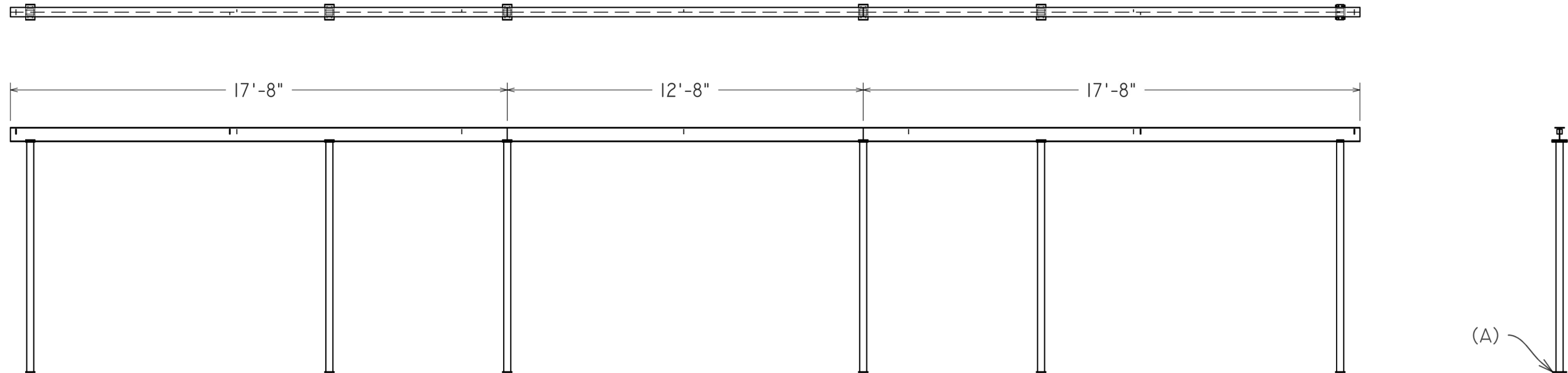
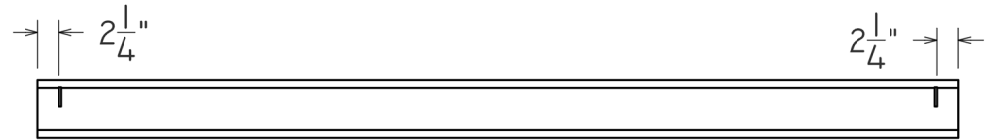


I-BEAM / LEG  
CONNECTION

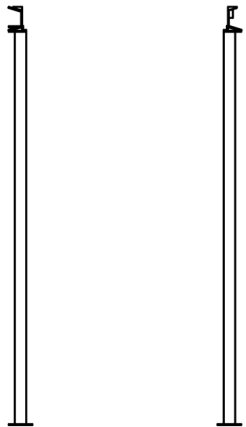
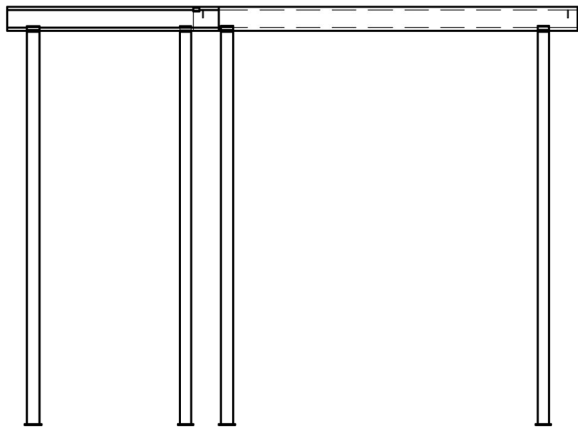
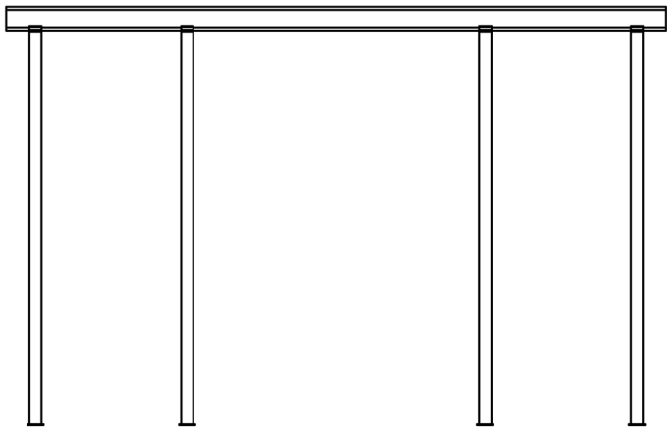
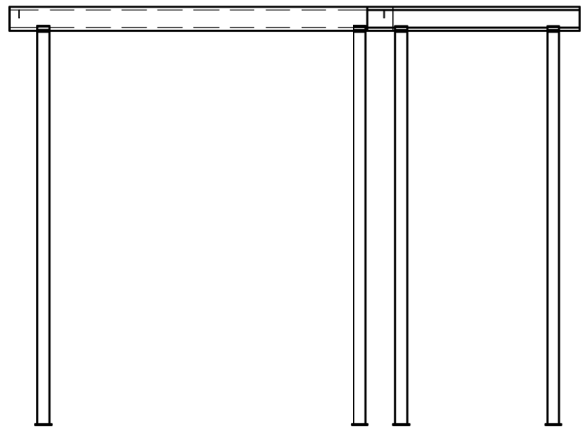
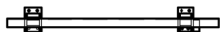
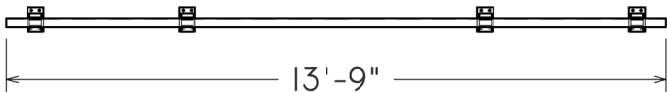
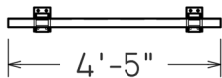
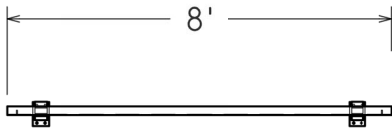
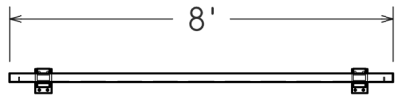


	SPRING AWAKENING		DATE 10/17/19
	I-BEAM STEEL		SCALE 1/4" = 1'
			PLATE NUMBER 4A.1
			PAGE 1 OF 12

ADVISOR SIGNATURE	DIRECTOR GARRY GRIFFIN	TD DUNCAN JENNER-BENNETT
	DESIGNER KEVIN MCBEE	ATD KEVIN DOUGLASS
	PM MORGAN OCHS	LC SKYLAR WOSTAK
	ADVISOR ZAK STEVENSON	DRAFTER DUNCAN JENNER-BENNETT

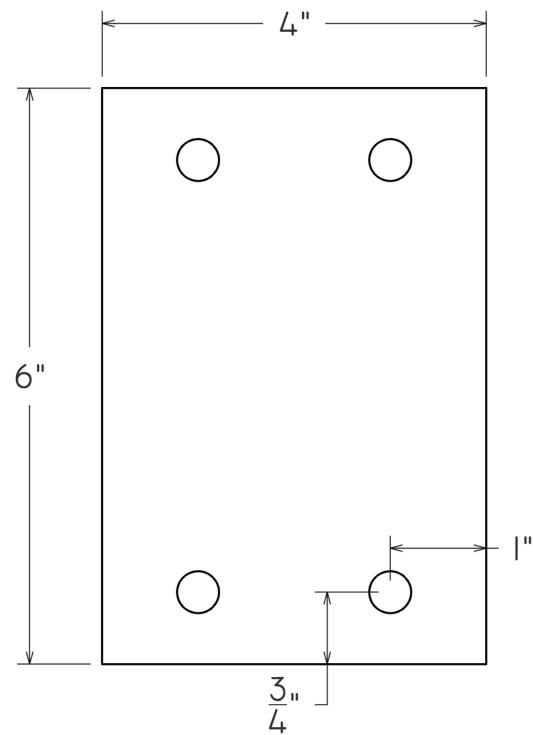


◆ SL & SR BEAM - BRACKETS  
TABS ARE 3/4" DOWN FROM TOP FACE  
(BACK)

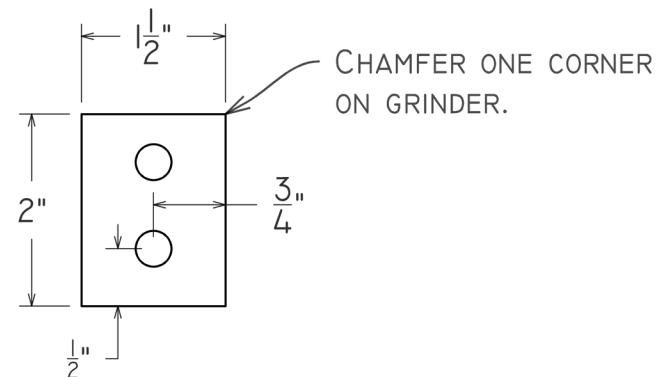


	SPRING AWAKENING		DATE 10/17/19	
			SCALE 1/4" = 1'	
	DS STEEL		PLATE NUMBER 4A.2	
			PAGE 2 OF 12	

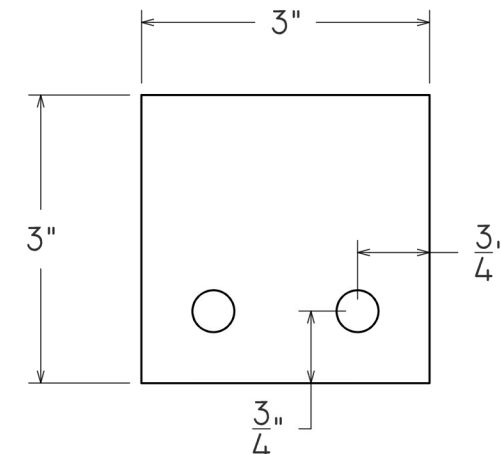
ADVISOR SIGNATURE	DIRECTOR GARRY GRIFFIN	TD DUNCAN JENNER-BENNETT
	DESIGNER KEVIN McBEE	ATD KEVIN DOUGLASS
	PM MORGAN OCHS	LC SKYLAR WOSTAK
	ADVISOR ZAK STEVENSON	DRAFTER DUNCAN JENNER-BENNETT



◆ LEG FLOOR FLANGE  
(A)  
MAKE 26



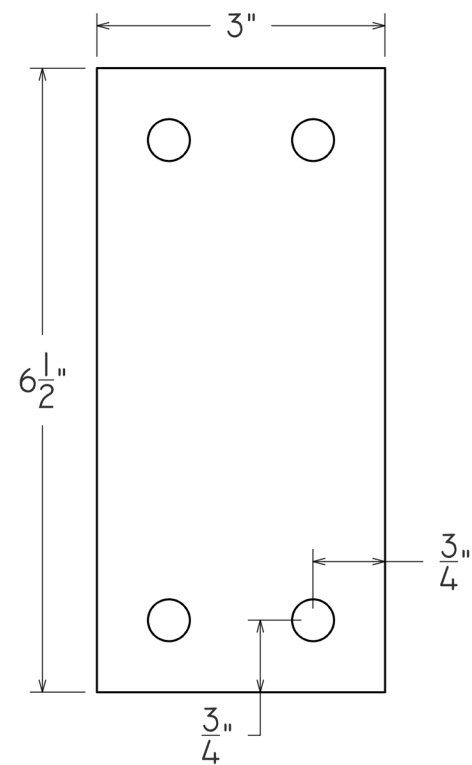
◆ TOGGLE BRACKET  
(B)  
MAKE 24



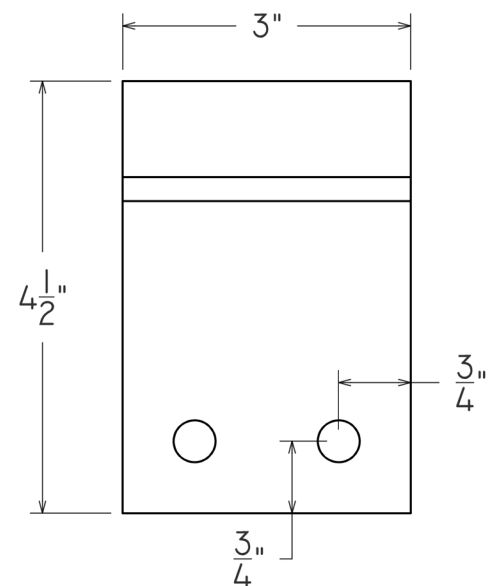
◆ BEAM CLAMP  
(C)  
MAKE 32

**NOTES:**

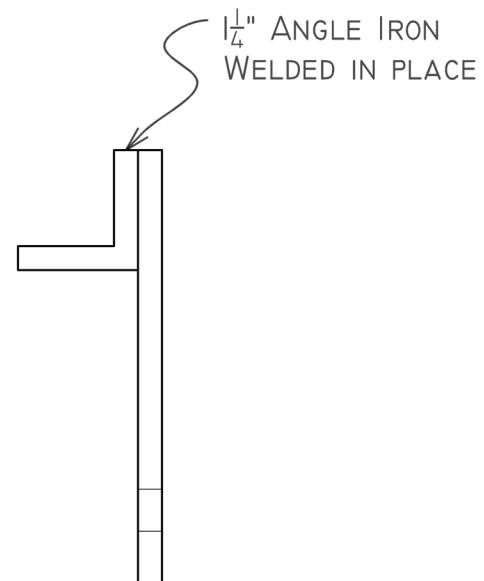
- ALL PIECES ARE CUT FROM  $\frac{1}{4}$ " FLAT BAR
- ALL HOLES ARE FOR  $\frac{3}{8}$ " HARDWARE



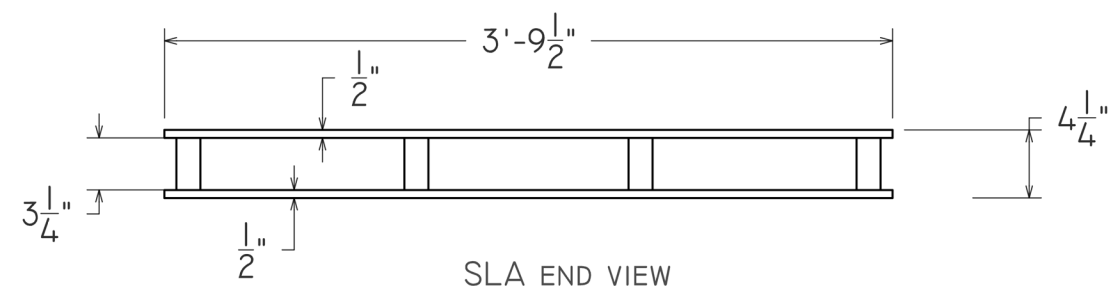
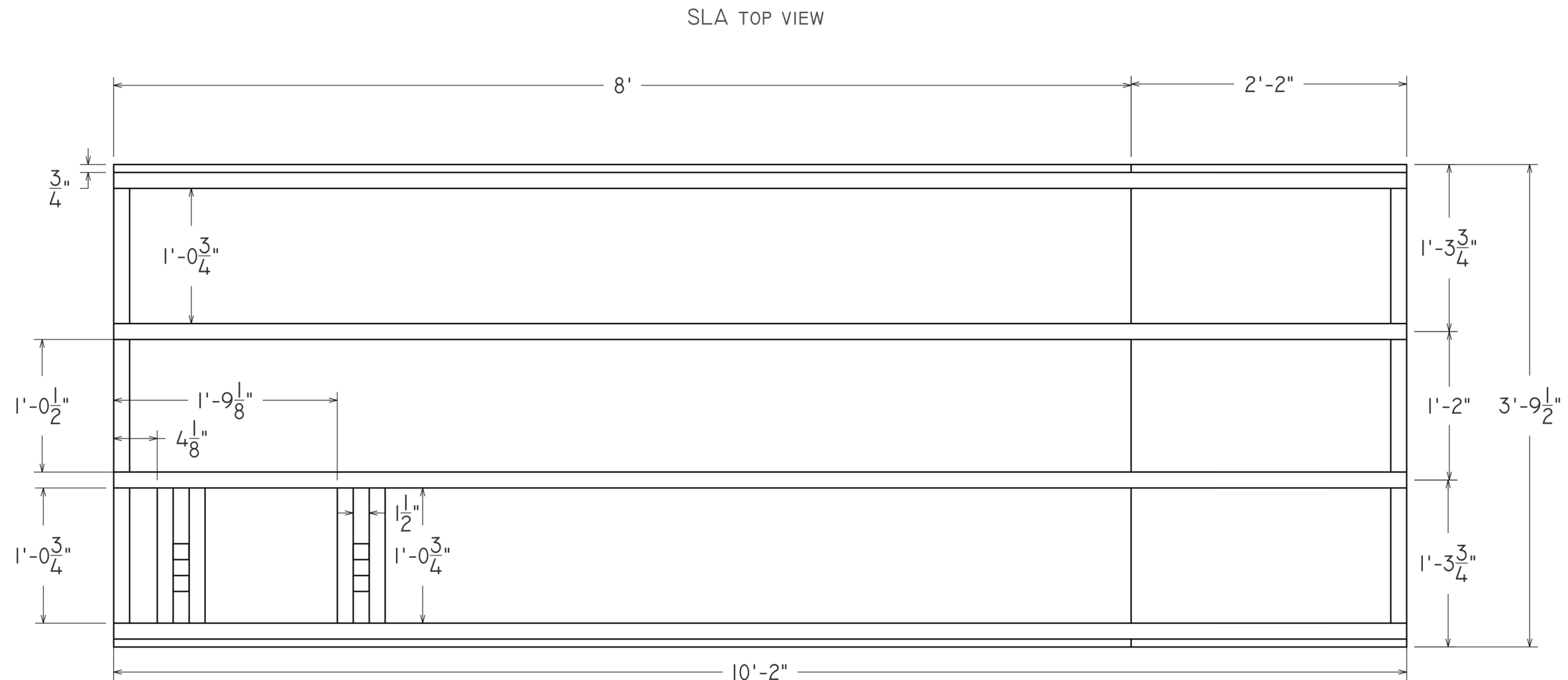
◆ I-BEAM LEG TOP  
(D)  
MAKE 6



◆ C-CHANNEL LEG TOP  
(E)  
MAKE 18



ADVISOR SIGNATURE	<div> <div>UNCSA</div> <div>DESIGN &amp; PRODUCTION</div> </div>				DATE 10/17/19
	<div> <div>SPRING AWAKENING</div> <div>STEEL BRACKETS</div> </div>				SCALE 3" = 1'
	DIRECTOR	GARRY GRIFFIN	TD	DUNCAN JENNER-BENNETT	PLATE NUMBER 4A.3
	DESIGNER	KEVIN MCBEE	ATD	KEVIN DOUGLASS	PAGE 3 OF 12
	PM	MORGAN OCHS	LC	SKYLAR WOSTAK	
	ADVISOR	ZAK STEVENSON	DRAFTER	DUNCAN JENNER-BENNETT	



NOTES:

STRESS SKIN CONSTRUCTION, WITH  $\frac{1}{2}$ " PLY AND 2X4 RIPPED TO 3" ACTUAL  
BUILD ON COMPLETELY FLAT SURFACE  
RIP 2X4 DOWN TO  $3\frac{1}{4}$ " ACTUAL FROM BOTH SIDES  
BUILD ONE THEN R&R  
CUT AN EXTRA 2X4 TO SLOT BETWEEN PLATFORMS  
CUT SCABS FOR THE SEAMS, GLUE AND STAPLE  
BUILD RAILING SUPPORTS THEN INSTALL INTO PLATFORM

CUT LIST: BUILD 2

4  $3'9\frac{1}{2}" \times 8$  SHEETS  $\frac{1}{2}"$  PLY  
4 @  $2'2" \times 3'9\frac{1}{2}"$  SHEETS  $\frac{1}{2}"$  PLY  
8 @  $\frac{1}{2}" \times 3\frac{1}{4}" \times 10'2"$  FRAMING MEMBERS  
8 @  $\frac{1}{2}" \times 3\frac{1}{4}" \times 1'0\frac{3}{4}"$  FRAMING MEMBERS  
4 @  $\frac{1}{2}" \times 3\frac{1}{4}" \times 1'0\frac{1}{2}"$  FRAMING MEMBERS

UNCSA  
DESIGN &  
PRODUCTION

SPRING AWAKENING

STRESS SKIN: CENTER LEFT

ADVISOR SIGNATURE

DIRECTOR

GARRY GRIFFIN

TD

DUNCAN JENNER-BENNETT

DESIGNER

KEVIN MCBEE

ATD

KEVIN DOUGLASS

PM

MORGAN OCHS

LC

SKYLAR WOSTAK

ADVISOR

ZAK STEVENSON

DRAFTER

(DRAFTER)

DATE 10/4/19

SCALE

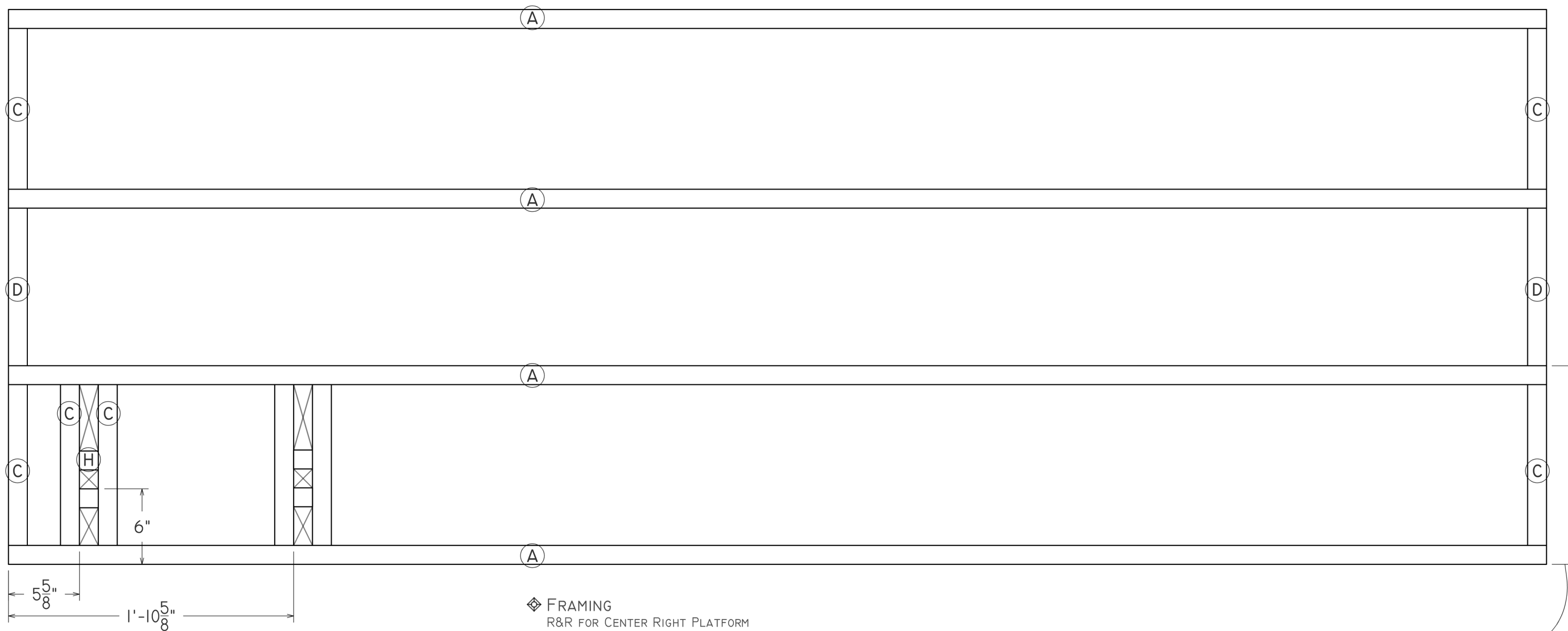
1" = 1'

PLATE NUMBER

4B.1

PAGE

4 OF 12

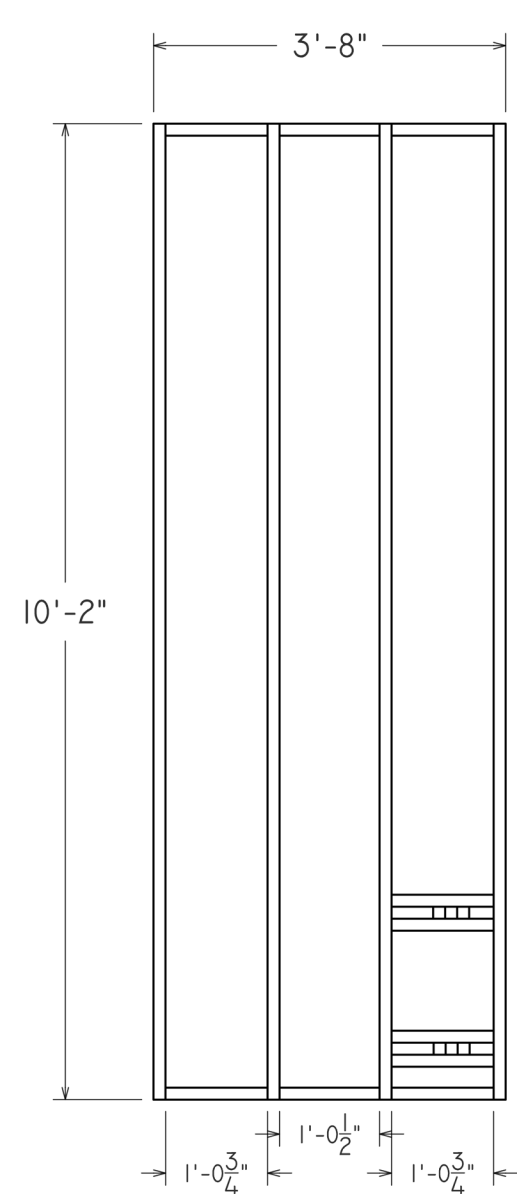


ASSEMBLE FIRST

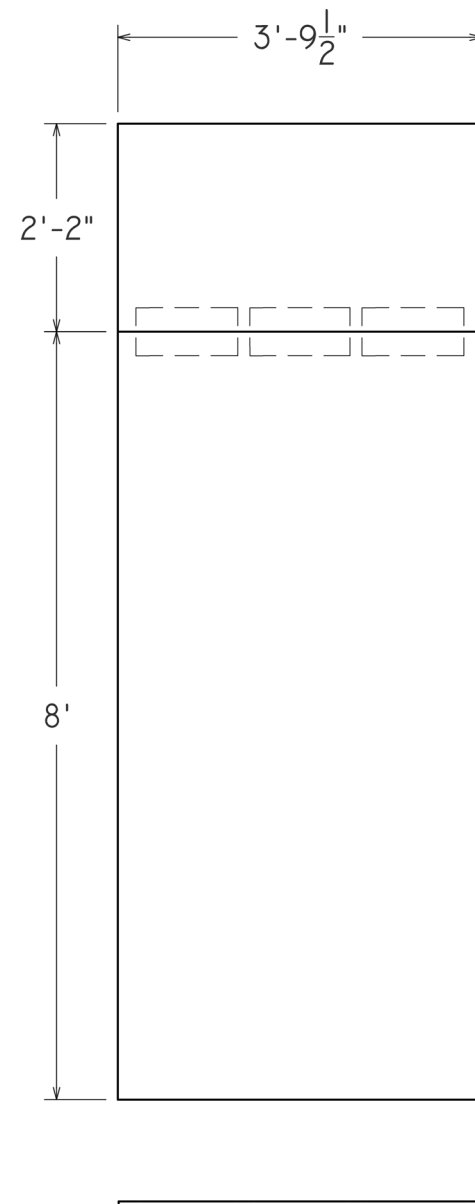
NOTES:

- FRAME IS 2X4 RIPPED TO  $3\frac{5}{16}$ "
  - RIPPED EDGE MUST BE ON THE BOTTOM
- ASSEMBLE WITH GENEROUS GLUE, SCREWS, AND PRE-DRILLING.
- ASSEMBLE SIDES OF FRAMING FIRST
- HOLD FINAL TOGGLES IN PLACE WITH 4' CLAMPS WHILE ATTACHING SKINS.

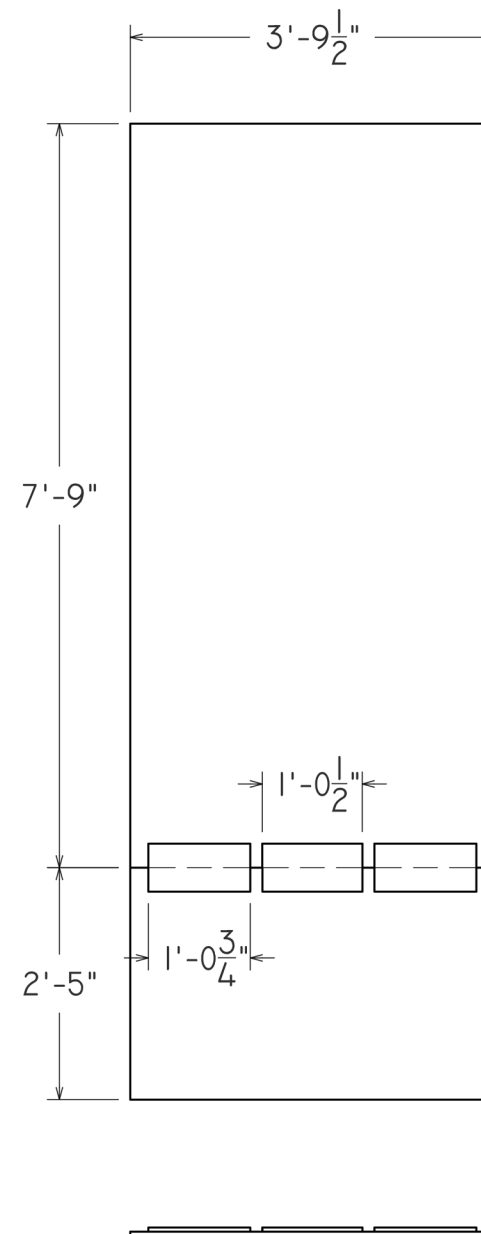
<div>UNCSA</div> <div>DESIGN &amp; PRODUCTION</div>		SPRING AWAKENING		DATE	10/7/19
		STRESS SKIN: CL FRAME		SCALE	1 1/2" = 1'
				PLATE NUMBER	4B.2
DIRECTOR	GARRY GRIFFIN	TD	DUNCAN JENNER-BENNETT	PAGE	5 OF 12
DESIGNER	KEVIN MCBEE	ATD	KEVIN DOUGLASS		
PM	MORGAN OCHS	LC	SKYLAR WOSTAK		
ADVISOR	ZAK STEVENSON	DRAFTER	DUNCAN JENNER-BENNETT		



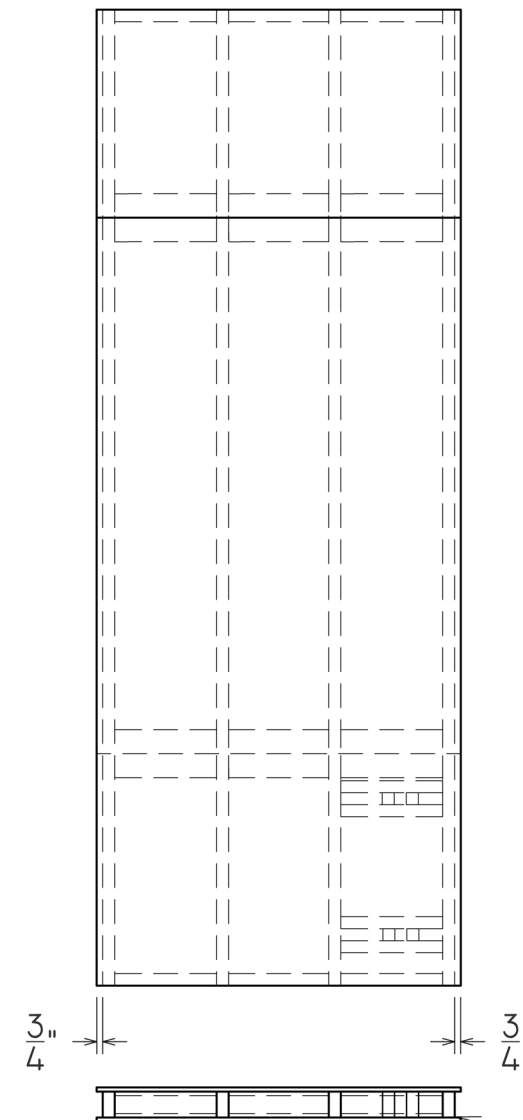
◆ FRAMING  
2x4 RIPPED TO 3 5/16"  
RIPPED EDGE MUST BE ON BOTTOM



◆ TOP SKIN  
1/2" AC PLY



◆ BOTTOM SKIN  
1/2" SHEATHING



RIPPED EDGE  
OF 2x4 FRAME

#### NOTES:

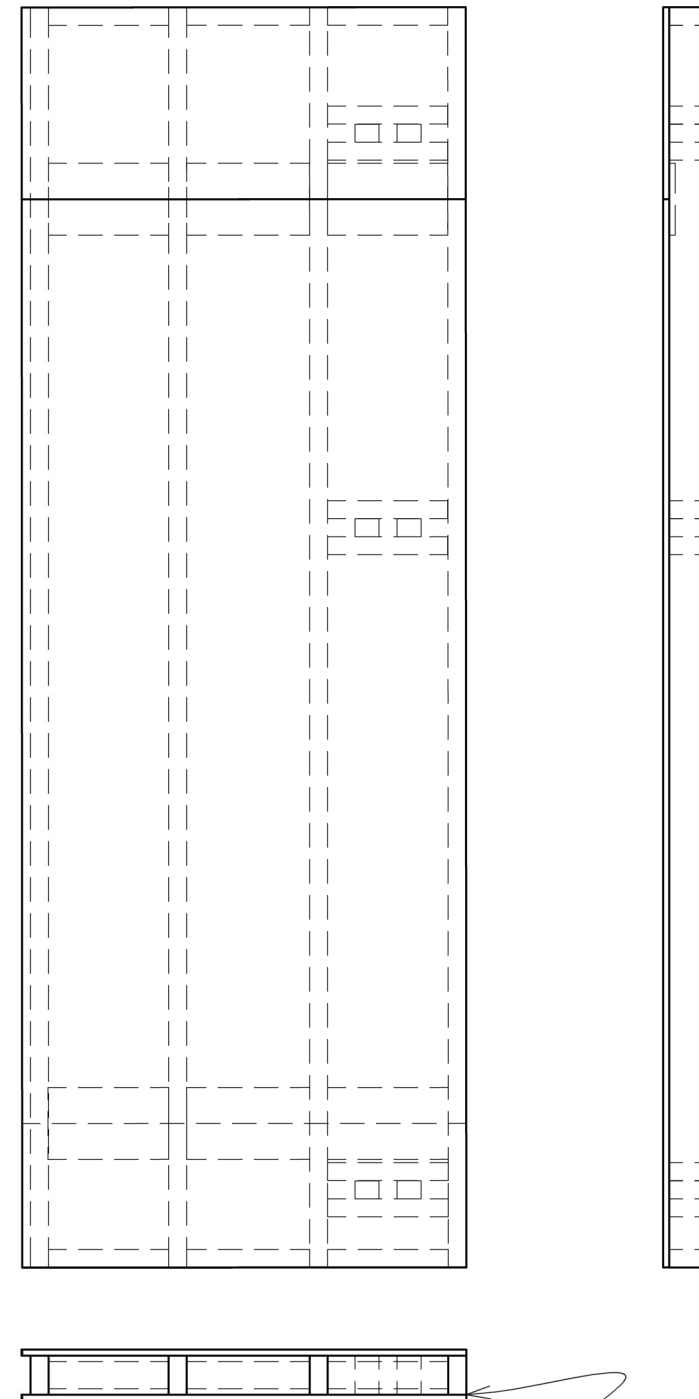
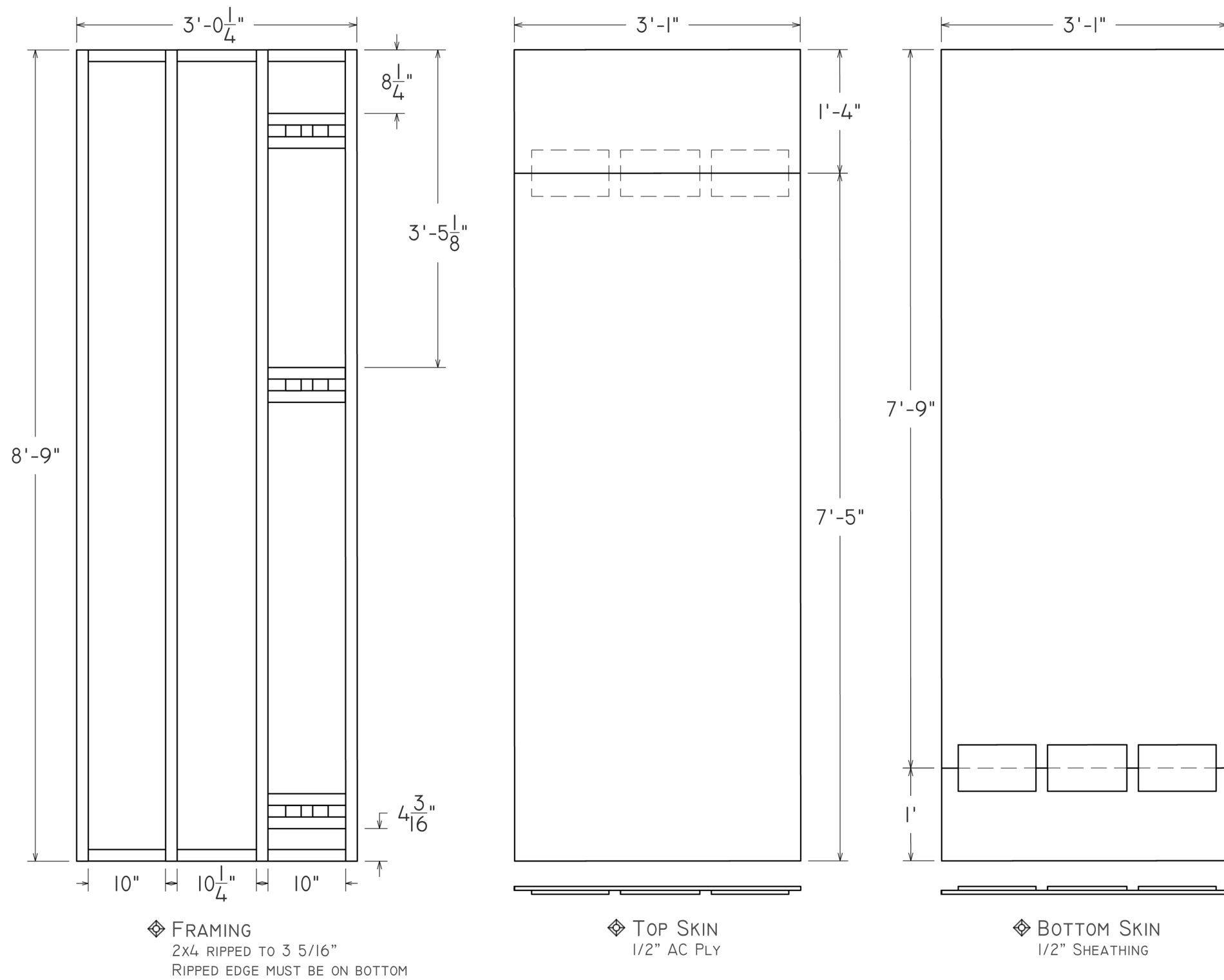
- FRAME IS 2x4 RIPPED TO 3 5/16"
  - RIPPED EDGE MUST BE ON THE BOTTOM
- TOP SKIN IS 1/2" AC PLY
- BOTTOM SKIN IS 1/2" RATED SHEATHING
- SPLICE PLATES ARE 6"x12 1/2" AND 6"x12 3/4" (USE OFF CUTS FROM SKINS)

- ASSEMBLE FRAMING FIRST (SEE FOLLOWING PLATE FOR MORE DETAILS)
- ATTACH TOP SKIN FIRST, THEN BOTTOM SKIN:
  - APPLY GLUE OVERZEALOUSLY, AND SPREAD WITH A ROLLER.
  - ALIGN FRAME TO CORNERS WITH SCREWS
  - CONTINUE SECURING SKIN WITH PNEUMATIC RING NAILERS

<div> <div>UNCSA</div> <div>DESIGN &amp; PRODUCTION</div> </div>	<div> <div>SPRING AWAKENING</div> <div>STRESS SKIN: CENTER LEFT</div> </div>			DATE	10/7/19
				SCALE	1/2" = 1'
				PLATE NUMBER	4B.3
				PAGE	6
				OF	12

ADVISOR SIGNATURE

DIRECTOR	GARRY GRIFFIN	TD	DUNCAN JENNER-BENNETT
DESIGNER	KEVIN MCBEE	ATD	KEVIN DOUGLASS
PM	MORGAN OCHS	LC	SKYLAR WOSTAK
ADVISOR	ZAK STEVENSON	DRAFTER	DUNCAN JENNER-BENNETT



**NOTES:**

- FRAME IS 2x4 RIPPED TO 3 5/16"
  - RIPPED EDGE MUST BE ON THE BOTTOM
- TOP SKIN IS 1/2" AC PLY
- BOTTOM SKIN IS 1/2" RATED SHEATHING
- SPLICE PLATES ARE 6"x10" AND 6"x10 1/4" (USE OFF CUTS FROM SKINS)
- ASSEMBLE FRAMING FIRST (SEE FOLLOWING PLATE FOR MORE DETAILS)
- ATTACH TOP SKIN FIRST, THEN BOTTOM SKIN:
  - APPLY GLUE OVERZEALOUSLY, AND SPREAD WITH A ROLLER.
  - ALIGN FRAME TO CORNERS WITH SCREWS
  - CONTINUE SECURING SKIN WITH PNEUMATIC RING NAILERS

ADVISOR SIGNATURE

UNCSA  
DESIGN &  
PRODUCTION

SPRING AWAKENING

STRESS SKIN: SL-CENTER

DIRECTOR	GARRY GRIFFIN	TD	DUNCAN JENNER-BENNETT
DESIGNER	KEVIN MCBEE	ATD	KEVIN DOUGLASS
PM	MORGAN OCHS	LC	SKYLAR WOSTAK
ADVISOR	ZAK STEVENSON	DRAFTER	DUNCAN JENNER-BENNETT

DATE 10/4/19

SCALE

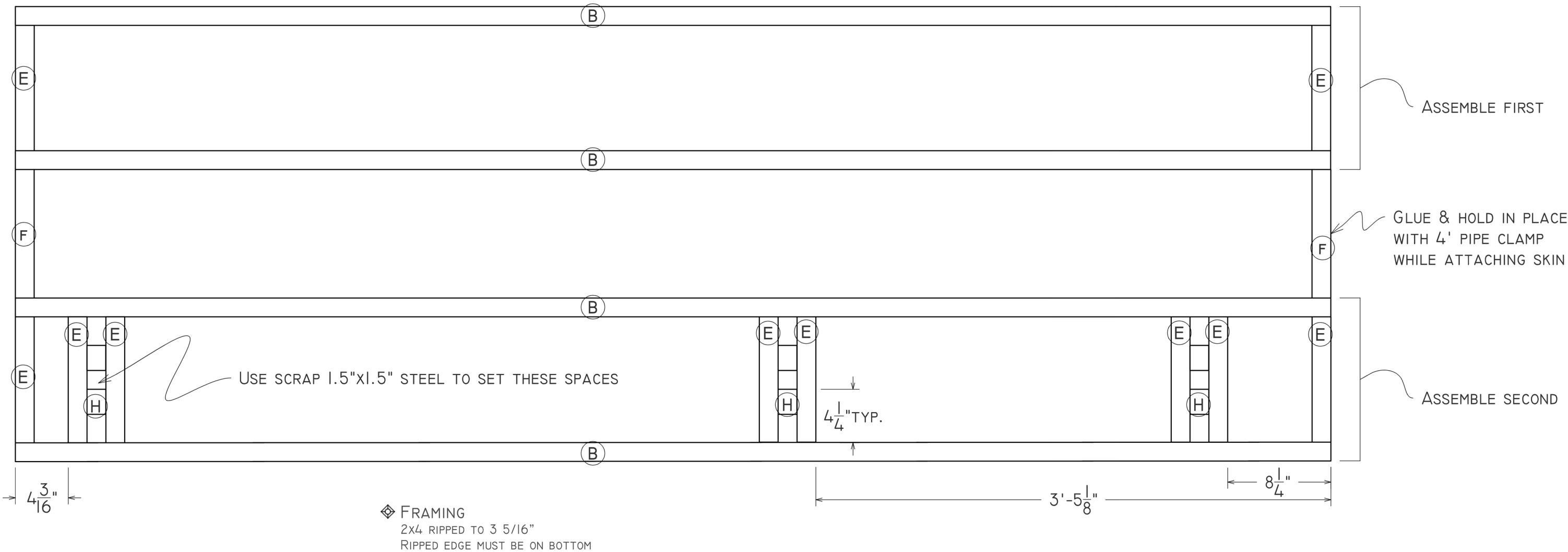
3/4" = 1'

PLATE NUMBER

4c.1

PAGE

7 OF 12



NOTES:

- FRAME IS 2x4 RIPPED TO  $3\frac{5}{16}"$ 
  - RIPPED EDGE MUST BE ON THE BOTTOM
- ASSEMBLE WITH GENEROUS GLUE, SCREWS, AND PRE-DRILLING.
- ASSEMBLE SIDES OF FRAMING FIRST
- HOLD F TOGGLES IN PLACE WITH 4' CLAMPS WHILE ATTACHING SKINS.

ADVISOR SIGNATURE



SPRING AWAKENING

STRESS SKIN: SL-C FRAME

DIRECTOR	GARRY GRIFFIN	TD	DUNCAN JENNER-BENNETT
DESIGNER	KEVIN MCBEE	ATD	KEVIN DOUGLASS
PM	MORGAN OCHS	LC	SKYLAR WOSTAK
ADVISOR	ZAK STEVENSON	DRAFTER	DUNCAN JENNER-BENNETT

DATE 10/4/19

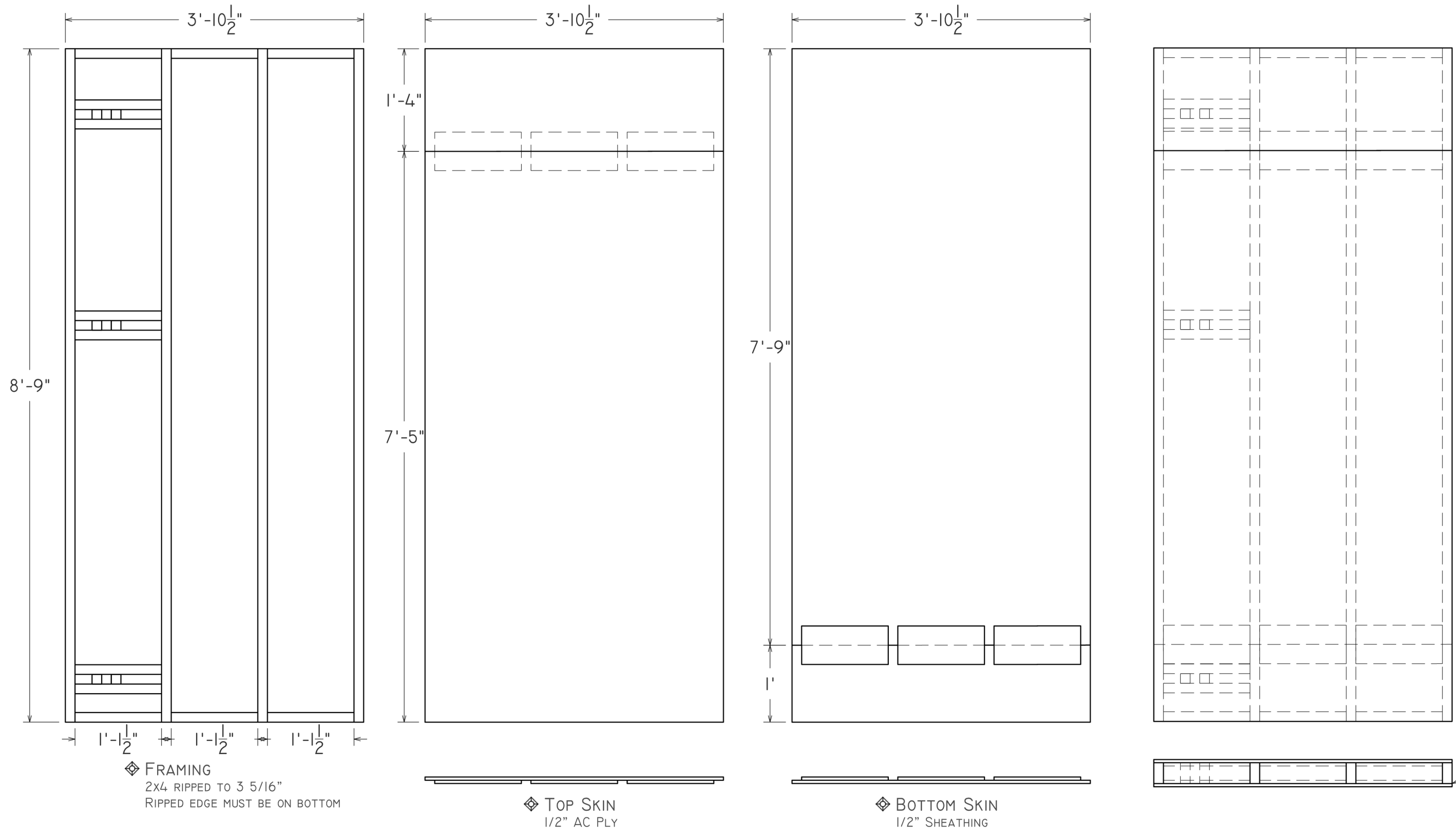
SCALE  
1 1/2" = 1'

PLATE NUMBER  
4c.2

PAGE

8 OF 12





**NOTES:**

- FRAME IS 2x4 RIPPED TO 3 5/16"
  - RIPPED EDGE MUST BE ON THE BOTTOM
- TOP SKIN IS 1/2" AC PLY
- BOTTOM SKIN IS 1/2" RATED SHEATHING
- SPLICE PLATES ARE 6"x13 1/2" (USE OFF CUTS FROM SKINS)

- ASSEMBLE FRAMING FIRST (SEE FOLLOWING PLATE FOR MORE DETAILS)
- ATTACH TOP SKIN FIRST, THEN BOTTOM SKIN:
  - APPLY GLUE OVERZEALOUSLY, AND SPREAD WITH A ROLLER.
  - ALIGN FRAME TO CORNERS WITH SCREWS
  - CONTINUE SECURING SKIN WITH PNEUMATIC RING NAILERS

ADVISOR SIGNATURE

UNCSA  
DESIGN &  
PRODUCTION

SPRING AWAKENING

STRESS SKIN: SL-SIDE

DIRECTOR	GARRY GRIFFIN	TD	DUNCAN JENNER-BENNETT
DESIGNER	KEVIN MCBEE	ATD	KEVIN DOUGLASS
PM	MORGAN OCHS	LC	SKYLAR WOSTAK
ADVISOR	ZAK STEVENSON	DRAFTER	DUNCAN JENNER-BENNETT

DATE 10/7/19

SCALE

3/4" = 1'

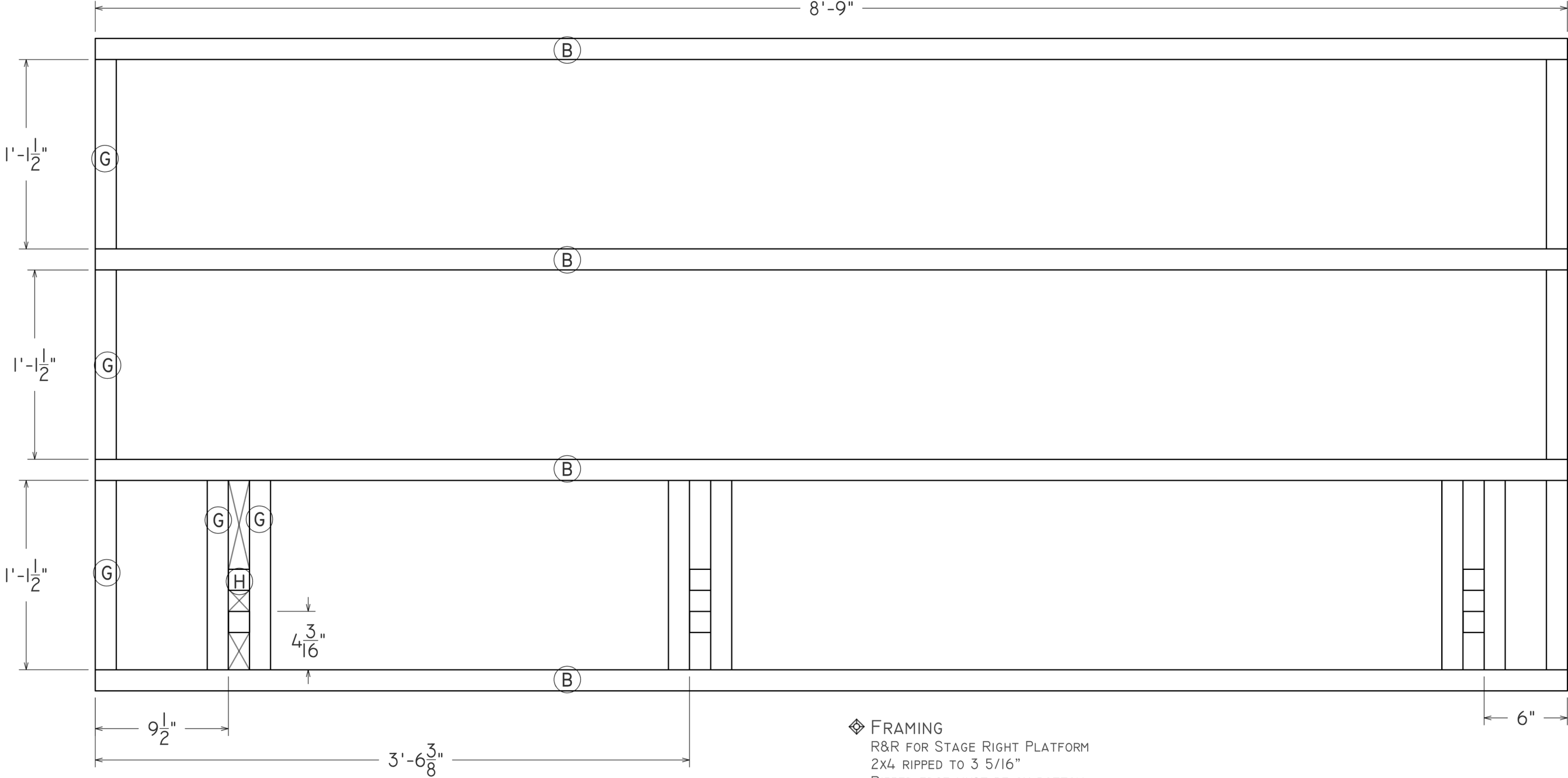
PLATE NUMBER

4D.1

PAGE

9

OF 12



◆ FRAMING  
R&R FOR STAGE RIGHT PLATFORM  
2X4 RIPPED TO 3 5/16"  
RIPPED EDGE MUST BE ON BOTTOM

- NOTES:
- FRAME IS 2X4 RIPPED TO 3 5/16"
    - RIPPED EDGE MUST BE ON THE BOTTOM
  - ASSEMBLE WITH GENEROUS GLUE, SCREWS, AND PRE-DRILLING.
  - ASSEMBLE SIDES OF FRAMING FIRST
  - HOLD FINAL TOGGLES IN PLACE WITH 4' CLAMPS WHILE ATTACHING SKINS.

ADVISOR SIGNATURE



SPRING AWAKENING

STRESS SKIN: SL-SIDE FRAME

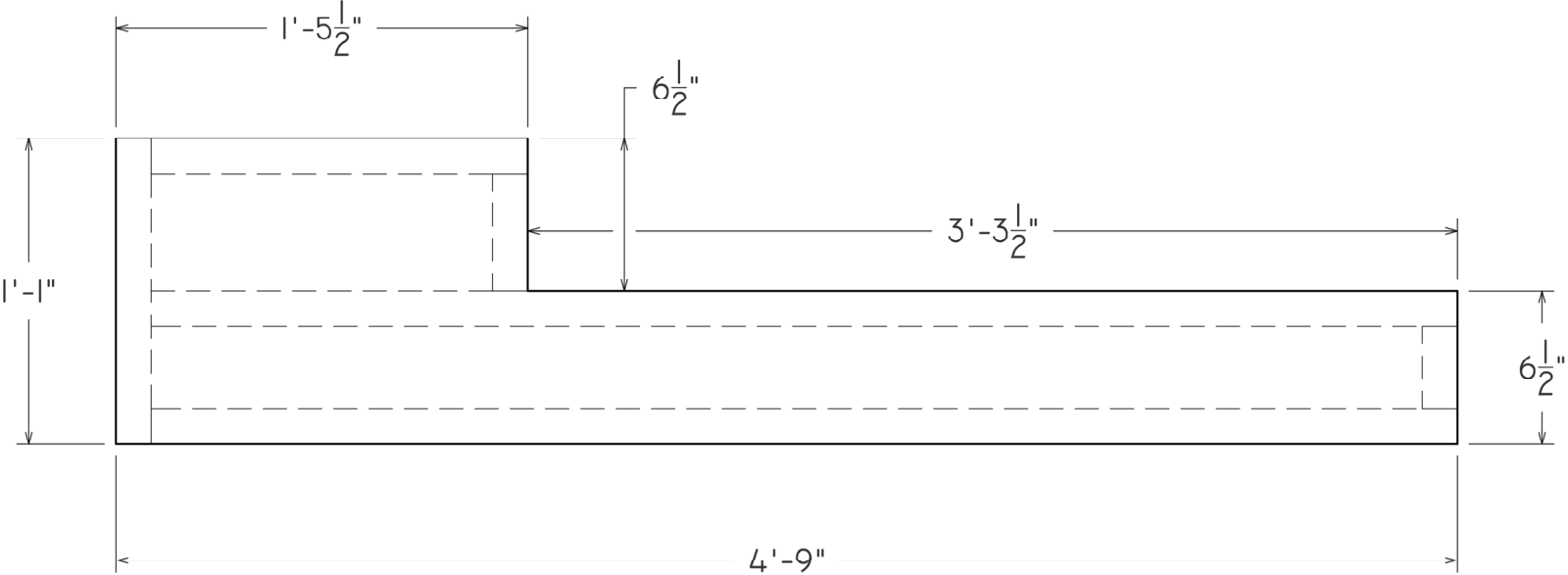
DIRECTOR	GARRY GRIFFIN	TD	DUNCAN JENNER-BENNETT
DESIGNER	KEVIN MCBEE	ATD	KEVIN DOUGLASS
PM	MORGAN OCHS	LC	SKYLAR WOSTAK
ADVISOR	ZAK STEVENSON	DRAFTER	DUNCAN JENNER-BENNETT

DATE 10/7/19

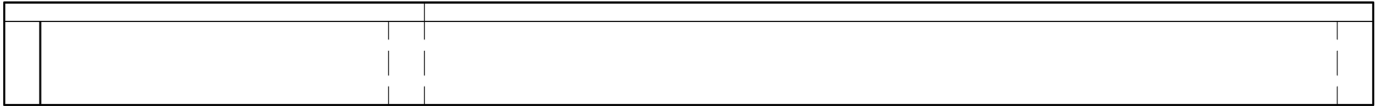
SCALE  
1 1/2" = 1'

PLATE NUMBER  
4D.2

PAGE  
10 OF 12



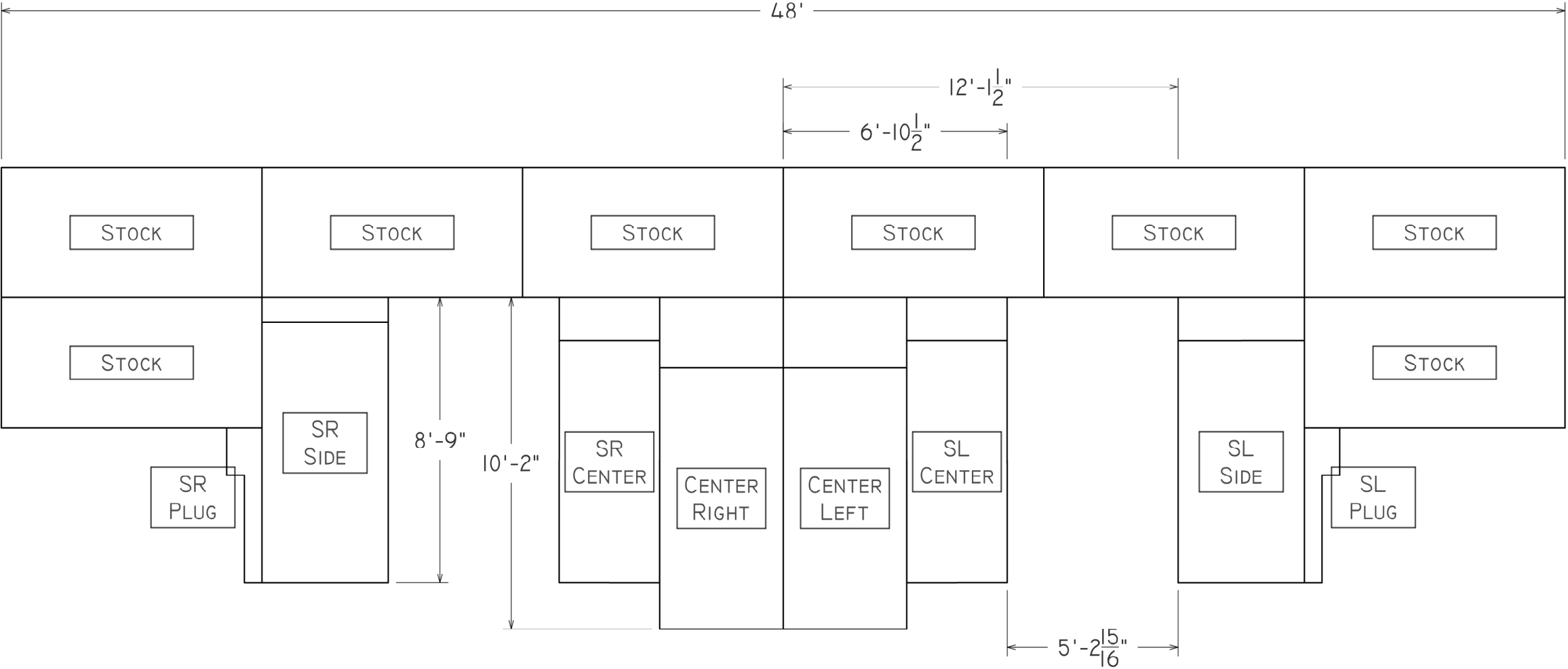
- NOTES:
- CUT LIDS FIRST ( $\frac{3}{4}$ " PLY)
  - FIT FRAMING TO LIDS (2x4)
  - GLUE AND SCREW TOGETHER



◆ SL SIDE PLUG  
BUILD 2: R&R

ADVISOR SIGNATURE

	SPRING AWAKENING				DATE 10/16/19
	2ND LEVEL: SIDE PLUGS				SCALE 1 1/2" = 1'
					PLATE NUMBER 4E
					PAGE 11 OF 12
DIRECTOR	GARRY GRIFFIN	TD	DUNCAN JENNER-BENNETT		
DESIGNER	KEVIN MCBEE	ATD	KEVIN DOUGLASS		
PM	MORGAN OCHS	LC	SKYLAR WOSTAK		
ADVISOR	ZAK STEVENSON	DRAFTER	DUNCAN JENNER-BENNETT		



	SPRING AWAKENING				DATE 10/9/19
	2ND LEVEL LAYOUT				SCALE 1/4" = 1'
					PLATE NUMBER 4F
	ADVISOR SIGNATURE	DIRECTOR GARRY GRIFFIN	TD DUNCAN JENNER-BENNETT	DESIGNER KEVIN MCBEE	ATD KEVIN DOUGLASS
	PM MORGAN OCHS	LC SKYLAR WOSTAK			
	ADVISOR ZAK STEVENSON	DRAFTER DUNCAN JENNER-BENNETT			

12 OF 12