



# Introducing CompQ

**Automated GxP and HIPAA  
Compliance at Scale  
for Life Sciences**

**2023**



# Agenda

**Understanding GxP & HIPAA**

**Modern Challenges: Cloud, AI, and Generative AI**

**Regulatory Landscape Overview**

**Challenges of Compliance in Life Sciences**

**CompQ - Key Features**

**CompQ - Strategic Benefits**

**Life Sciences Compliance Framework**

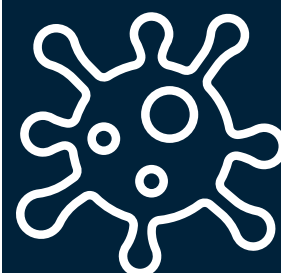
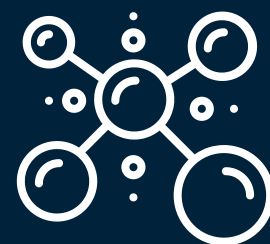
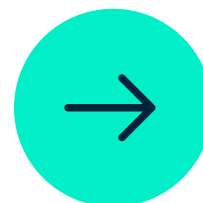
**Complementary Workshops**

**Automated GxP - Architecture**

**Automated GxP - Automation Report**

**Automated Qualification Report Generation**

**HIPAA Compliance Dashboard**



# Understanding GxP & HIPAA: Why it Matters?

In an era defined by innovation and rapid advancement in the Life Sciences understanding and maintaining compliance is not just an obligation—it's a strategic imperative. Let's delve into the very foundations of these compliance standards:



## What is GxP?

**GxP** encompasses a range of compliance standards ("**Good x Practice**") that serve the pharmaceutical industry. Whether it's Good Manufacturing Practice (GMP) or Good Clinical Practice (GCP), GxP underscores the crucial role of **quality** and **consistency**.

## Why is it Significant?

Ensuring adherence to GxP is about safeguarding **patient safety** and **ensuring therapeutic efficacy**. This consistency fosters trust, both among regulators and the end consumers: the patients who rely on the integrity of pharmaceutical products.

## What is HIPAA?

The Health Insurance Portability and Accountability Act (**HIPAA**) is a pivotal regulation for U.S. healthcare. Instituted in 1996, its primary role is to **protect patient health information** from being disclosed without consent.

## Why is it Significant?

As healthcare digitizes and evolves, the sanctity of patient data is paramount. HIPAA **ensures that healthcare providers, payers, and their business associates exercise utmost diligence**, preserving the **confidentiality of patient information** in an interconnected world.

## Challenges & Consequences



**Rising Stakes:** Regulatory authorities globally are intensifying their scrutiny, driven by the objective to ensure patient safety and data security in this new age.



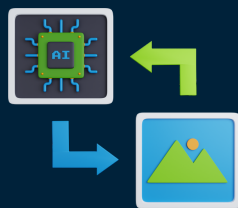
**Implications of Non-Compliance:** The repercussions of failing to comply are dire. Fines can range from thousands to millions of dollars, not to mention reputational damage, operational disruptions, and potential legal actions. More than ever, maintaining compliance is both a moral and fiscal responsibility.

# Modern Challenges: Cloud, AI, and Generative AI

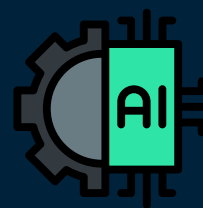
The trajectory of innovation within the life sciences sector has seldom followed a linear path. As we pivot to a new era dominated by Cloud computing, Artificial Intelligence (AI), and Generative AI, the ripple effects on industry dynamics are profound.



**Cloud Computing:** Beyond just data storage, the cloud offers scalable, dynamic infrastructure solutions. In the Life Sciences context, Cloud accelerates drug discovery, streamlines clinical trials, and personalizes patient care like never before. But with such advancements come the intricacies of data privacy, security, and regulatory demands.



**Generative AI:** This subset of AI, with its ability to generate new data, has the potential to revolutionize drug formulation and therapeutic protocols. But the 'created' nature of such data pushes the boundaries of ethical considerations and compliance norms.



**Artificial Intelligence & Machine Learning (AI/ML):** With AI's predictive algorithms, we can now anticipate disease outbreaks, tailor treatments to individual genetic blueprints, and optimize operational efficiency. However, AI's 'black box' nature presents unique challenges in traceability and validation, essential for regulatory compliance.

## Compliance: Innovation's Dual Challenge



The dawn of these technologies has undoubtedly supercharged the Life Sciences sector. Yet, the speed and manner of this transformation introduce amplified complexities in ensuring regulatory compliance. The integration of Cloud, AI, and Generative AI has in some aspects doubled the scrutiny, making regulatory adherence not just a compliance task but a strategic imperative.

In a domain where innovation is relentless, navigating the nuanced terrains of compliance is no longer a choice but a mandate. Understanding these modern challenges is the first step in fortifying a robust, compliant future.

# Regulatory Landscape Overview

## Executive Insight

Over the past few years, Life Sciences industry, have witnessed intensified scrutiny from global regulators. The stakes are high, and in this digital age, mere compliance isn't enough.



## The Dual Challenge

Modern business faces a dual challenge: Satisfying informed consumers and navigating complex regulations. Balancing innovative response with strict regulatory adherence is crucial.



## Proactive Compliance

In healthcare and pharmaceuticals, anticipating regulatory shifts is crucial. True compliance isn't just meeting today's standards but preparing for tomorrow's, with patient safety and product reliability at the forefront.



## Unifying Compliance Vision

The complexity of modern business can lead to fragmented compliance understandings across sectors. The key? An integrated, holistic approach to compliance that bridges potential gaps.

**CloudHub's Edge:** In this nuanced landscape, CompQ emerges as a differentiated solution. More than an automation tool, it's a tailored strategy that enables businesses in the Life Sciences sectors to meet their strategic ambitions while upholding compliance standards without falter.

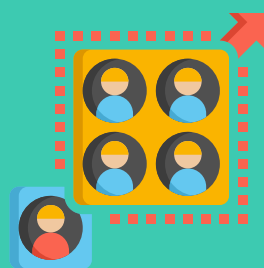
# Challenges of Compliance in Life Sciences

*GxP and HIPAA compliance tests life science capabilities.*



## Development

- Manual infrastructure provisioning
- Manual integration and deployment
- Manual code scanning & threat detection
- Manual testing and reports



## Scalability & Adaptation

- Inflexible Systems
- Lack of Modular Integration
- Inefficient Resource Allocation
- Slow Regulatory Response



## Qualification and validation

- Process-heavy and labor-intensive
- Lengthy qualification of services/tools
- Manual IQ/OQ/PQ processes
- High documentation cycle time (80% time spent)



## Daily operations

- Manual monitoring and incident reporting
- Manual change and release management
- Difficulties in maintaining validated state
- Manual and expensive backup/restore

# CompQ – Revolutionizing Compliance Automation

In today's rapidly evolving Life Sciences ecosystem, regulatory challenges are more pronounced than ever. Navigating GxP and HIPAA compliance is a Herculean task, with non-compliance translating to significant fines and reputational damage.



## Automated Qualification

Instantly determine the credibility of cloud providers, laying the foundation for a compliant digital framework.



## Application Validation

CompQ automates up to 80% of validation for cloud-built applications and a substantial 40% for non-cloud solutions.



## Proactive Threat Scanning

Before deployment, CompQ scrutinizes code for potential threats, ensuring security at the foundational level.



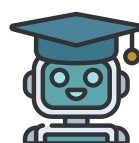
## Instant Validation Summaries

Eliminate wait times with summary reports generated in mere minutes.



## Infrastructure Automation

With tools like Terraform and CloudFormation, CompQ provisions infrastructure seamlessly, readying it for deployment.



## Adaptive AI & ML Compliance

CompQ proactively adapts to evolving AI and ML landscapes, ensuring unwavering compliance amidst rapid tech shifts.



## Rapid Infrastructure Qualification

Generate IQ reports in minutes, not days, providing a streamlined verification process for customers.



## Always-on Compliance

With real-time threat detection and automated remediation, CompQ ensures your systems remain compliant, anytime and every time.

# Strategic Benefits

Choosing the right compliance automation tool is more than a tactical decision—it's strategic. It's about future-proofing your operations, safeguarding reputation, and ensuring agility amidst evolving regulatory challenges. Equip your enterprise with a solution that complements your vision for tomorrow.



## Expedited Go-to-Market



Our advanced automation streamlines critical processes, enabling faster system deployments. This ensures your business objectives remain on track, significantly cutting down the time to market without sacrificing quality.

## Operational Efficiencies



CompQ not only optimizes operational processes but ensures precision in execution, reducing both time and costs. Achieve compliance seamlessly without compromising efficiency or overburdening your budget.

## System Resilience and Reliability



In today's dynamic digital world, any downtime can be detrimental. Rely on our solution to guarantee uninterrupted system availability, ensuring that your operations are resilient against unforeseen challenges.

## Proactive Regulatory Insight



Our predictive compliance algorithms provide foresight, ensuring you not only meet but anticipate regulatory demands. This approach mitigates the risk of penalties, securing your organization's reputation and financial health.

*Our solution transcends traditional software, embodying strategic insight from industry leaders. Tailored for the unique challenges of life sciences, step into the next era of compliance automation.*



# Life Sciences Compliance Framework

Consistent and reliable compliance is a necessity. The core modules of CompQ have been meticulously designed to address specific regulatory requirements. Each module provides tools and functionalities essential for streamlining compliance processes, ensuring a robust and efficient operational framework. Modules can be implemented both collectively or as standalone solutions, catering to your specific needs and preferences.



## Module 1

Accelerator: CompQ  
Service / Tool / Process  
Qualification



## Module 2

Accelerator: CompQ  
Regulated Landing Zone



## Module 3

Accelerator: CompQ(Doc)  
App Infrastructure setup,  
IQ and OQ Automation



## Module 4

Accelerator: CompQC  
Continuous Compliance

# Mastering Compliance

## Complementary Workshops

In addition to CompQ, CloudHub offers a suite of complementary workshops aimed at providing your team with the knowledge, tools, and strategies they need to ensure seamless compliance in the realm of Life Sciences.



### Workshop 1:

#### Best Practices for GxP and HIPAA

This workshop focuses on actionable insights and hands-on exercises to ensure you're always a step ahead in the regulatory game.

### Workshop 3:

#### Automating Compliance Processes

This session will introduce participants to the leading tools and methodologies that can streamline and enhance compliance procedures.

### Workshop 2:

#### Controls for Managing Compliance

This workshop will provide an analytical breakdown of the diverse controls essential for maintaining compliance. Participants will gain insights into everything from risk assessments to continuous monitoring.

### Workshop 4:

#### High-Level Process Roadmap

Gain a strategic perspective with a workshop dedicated to developing a comprehensive compliance roadmap. Learn to formulate, implement, and review a structured plan tailored to your organization's needs.

### Key Features:



Interactive Sessions



Hands-on Exercises

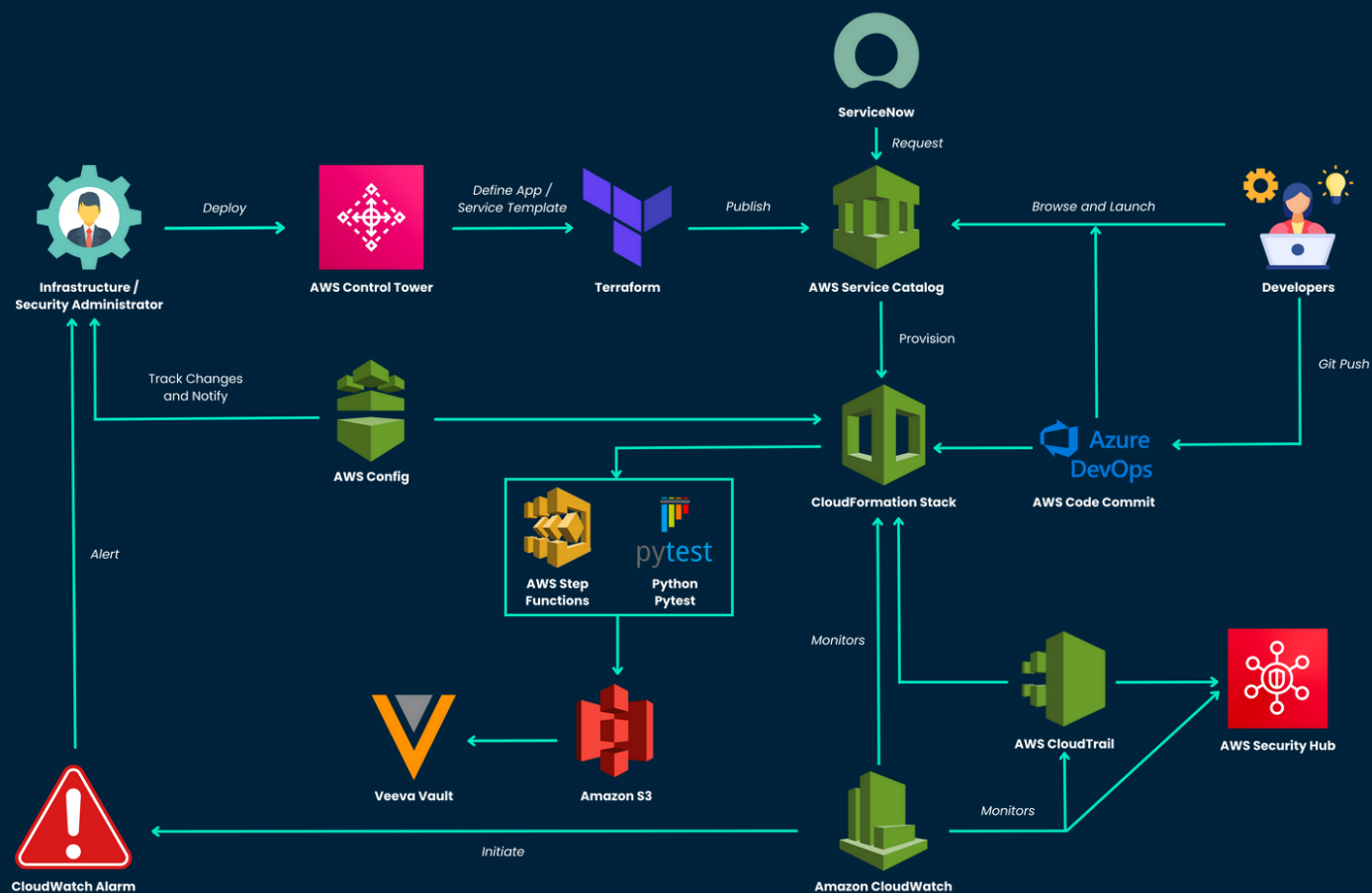


Tailored Content



Post-Workshop Support

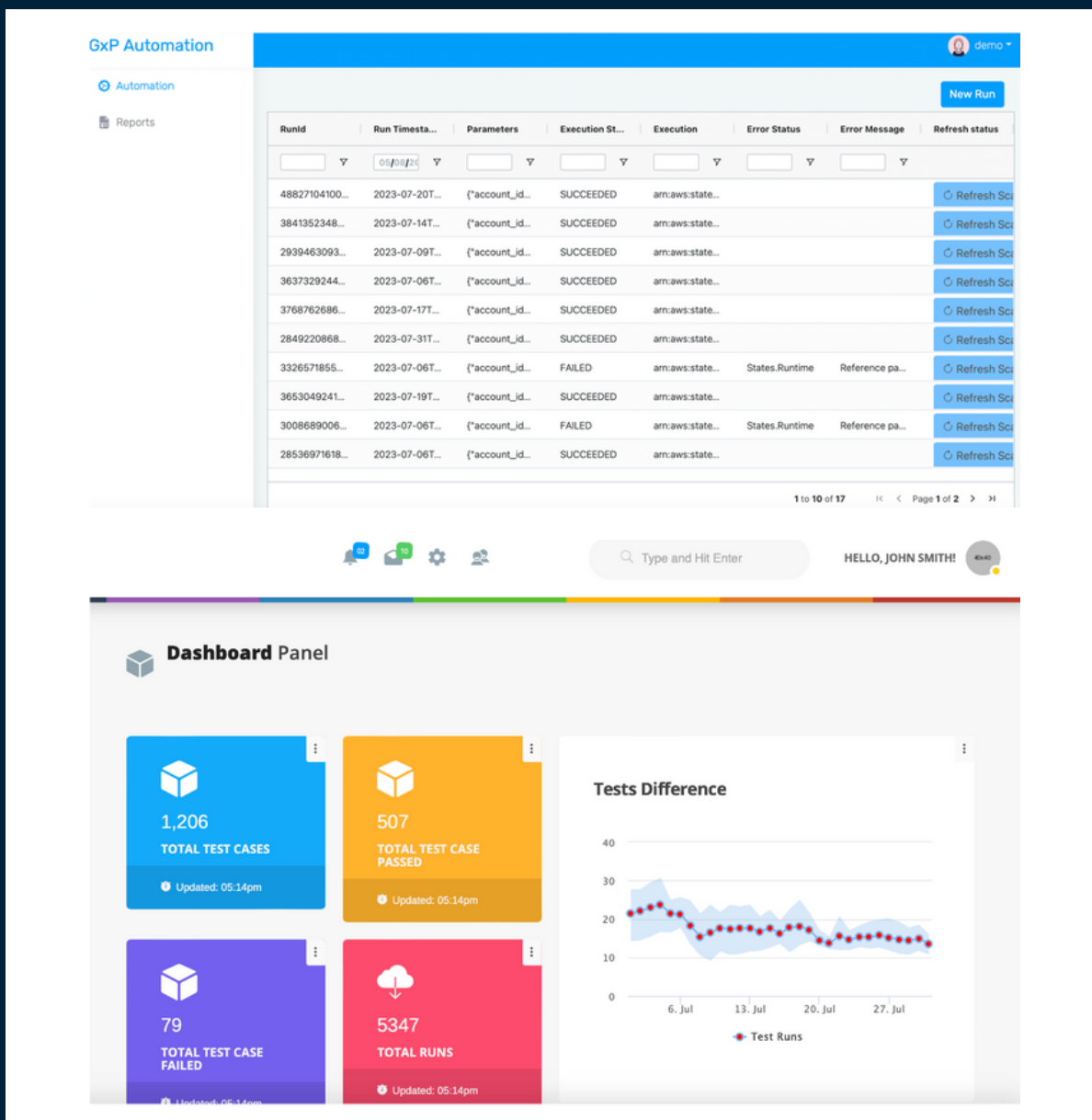
# Automated GxP - Architecture



Unlock pivotal insights, enhance operational efficiency, reduce compliance risks, and gain a competitive edge, all distilled for the discerning leaders at the helm of Life Sciences innovation.



# Automated GxP - Automation Report



The CompQ Dashboard offers a real-time snapshot of GxP compliance automation. Instantly view total test cases, distinguish between passed and failed results, and access detailed test run timestamps. With user-specific parameter insights and efficient status-refresh options, it streamlines your compliance processes, ensuring timely and informed decision-making.

# Automated Qualification Report Generation

Post Migration Test Report			
Wave ID:	21W19	Page:	1 of 08
Run Number:	1		
Title:	Migration Test Results for Wave ID 1		

## 1. Background

This report serves as a snapshot for as-built and run configurations of requested cloud resource that comprises as infrastructure for the customer. This is an automated document created from the automated scripts.

### 1.1. Migration Wave Information

Wave Id:	1
Account Number:	12346000000000000000
Region:	eu-central-1
Run Number:	1
Environment:	Test
Report Created By:	gxp-resource-collector@00000000000000000000210
Created Date:	08-May-2023 10:02:09 UTC

## 2. Migration Summary

IQ/OQ	Number of Tests	Passed	Failed
IQ	10	8	2
OQ	15	12	3
Total	25	20	5

## 4. Migration Test Results

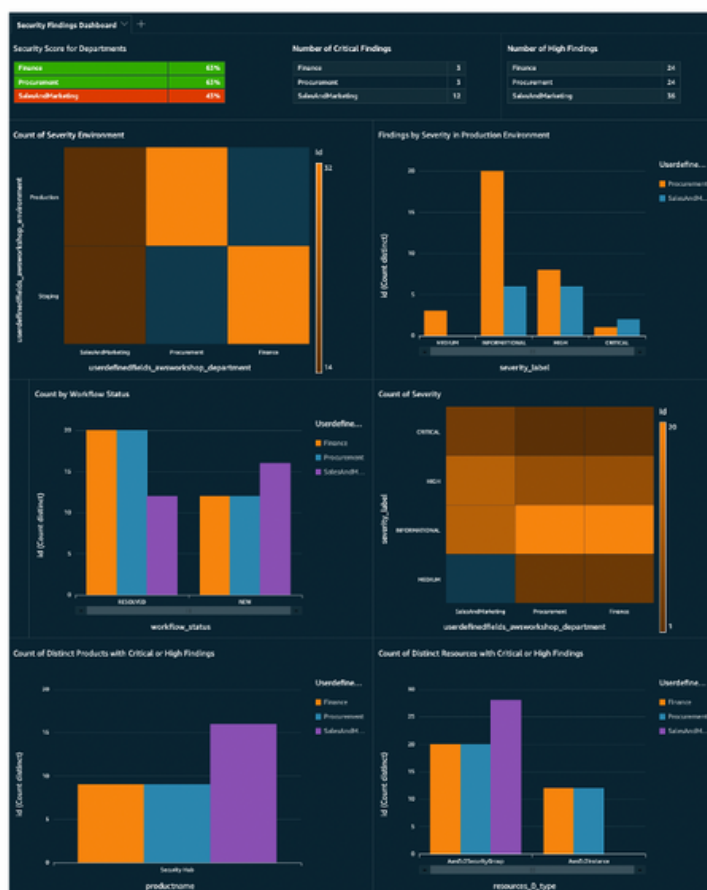
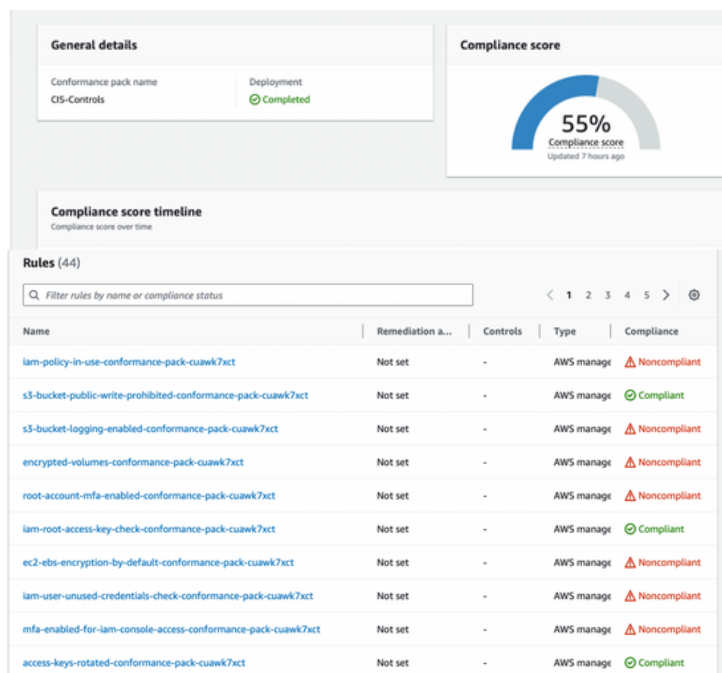
### 4.1. EC2 Instances

This table lists all parameters provided and the comparison with the actual values obtained from the resources:

S.N.	Parameter	Expected Value	Actual Value	Pass/Fail
AWS::EC2::Instance : bebra00000000000000000000000000000000				
The specification for the below resources are provisioned using autoIqoq_cemf_csv_json0-Migration-intake-form-wave-21W19.json				
1	InstanceType	c5.2xlarge	c5.2xlarge	Pass
2	PrivateIpAddress	10.116.0.0/16	10.116.0.0/16	Pass
3	SecurityGroups	sg-035811520754d99.sg-016a1959e42c7605b.sg-012f7bd807b22959	sg-012f7bd807b22959.sg-071d850601172552.sg-0ec2936bd6c812175	Fail
4	SubnetId	subnet-0b551aeca1d3015f	subnet-0b551aeca1d3015f	Pass
AWS::EC2::Instance : lantv00000000000000000000000000000000				
The specification for the below resources are provisioned using autoIqoq_cemf_csv_json0-Migration-intake-form-wave-21W19.json				
1	InstanceType	c5.xlarge	c5.xlarge	Pass
2	PrivateIpAddress	10.116.0.0/16	10.116.0.0/16	Pass
3	SecurityGroups	sg-035811520754d99.sg-016a1959e42c7605b.sg-06e5c0b13db4ecc8	sg-06e5c0b13db4ecc8.sg-071d850601172552.sg-0ec2936bd6c812175	Fail
4	SubnetId	subnet-0b551aeca1d3015f	subnet-0b551aeca1d3015f	Pass
AWS::EC2::Instance : bebra0050023				
The specification for the below resources are provisioned using autoIqoq_cemf_csv_json0-Migration-intake-form-wave-21W19.json				
1	InstanceType	c5.2xlarge	c5.2xlarge	Pass

The "Post Migration Test Report" offers an automated snapshot of cloud resource configurations post-migration. It provides a summary of migration outcomes, indicating pass or fail statuses. Key components include the comparison of specific cloud resources, against their expected configurations to validate the migration's precision.

# HIPAA Compliance Dashboard



The HIPAA Compliance Dashboard offers an in-depth view of 'CIS-Controls' conformance, highlighting a compliance score by timeline and specific rule statuses. The Security Findings Dashboard presents departmental security scores, sorted by severity, and the status of each issue. Together, they give a concise snapshot of compliance and security for effective management decisions.

# The CloudHub Distinction

## The Future is Here

As industries are constantly reshaped by emerging technologies, our solutions, guarantee unwavering adherence to the highest standards.



## Beyond Traditional Compliance

The modern regulatory landscape calls for advanced solutions. With CloudHub, harness the power of tech-driven regulatory expertise, positioning your enterprise not just for compliance, but for leadership.

## Unyielding Adaptability

Today's regulations are ever-evolving. Our solution ensures you're prepared for today's challenges and tomorrow's shifts, securing your enterprise's interests in an unpredictable landscape.

## Take the Next Step

In a market where the right decisions lead to dominance, aligning with CloudHub is an investment in the future. Let's redefine industry standards together.

# About Us - Leadership Team

At CloudHub, we merge deep expertise in AI/ML, Data and Compliance Automation with proficiency in leading cloud platforms and tools. Our team, enriched by tech veterans from giants like Amazon and Microsoft, has crafted unique frameworks such as DataMesh, DataCube, SmartQ ensuring efficient digital transformation. With over 22 years in the field, our understanding of business and compliance nuances sets us apart. Let CloudHub be your guide in your digital transformation voyage.



**Susant Mallick**  
Founder & CEO  
Ex-Amazon



**Dr. Archana Mallick**  
Co-Founder



**Mykhailo Prokhorenko**  
Business Development  
MSc Digital Business UvA

## DELIVERY TEAM:

**Nivedita Roy**  
Analytics Lead

**Archana Senapati**  
Data Lake SME

**Ashima Panda**  
AWS Developer Lead




# Ready to get started?

To learn more about our services and how we can assist you on your compliance modernization journey, please reach out to us.

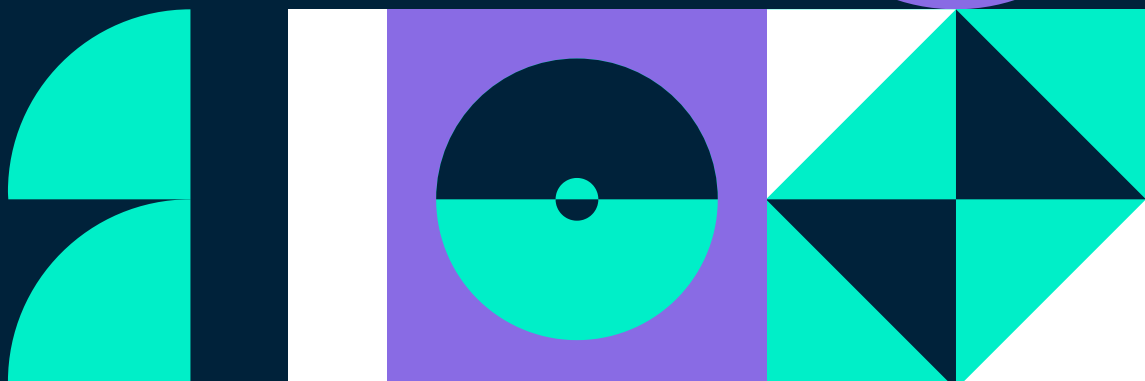


## Contact Us

 + 31 (6) 25 755 022

 [contact@cloudhubs.nl](mailto:contact@cloudhubs.nl)

 [cloudhubs.nl](https://cloudhubs.nl)





# Thank You!

<https://cloudhubs.nl/>